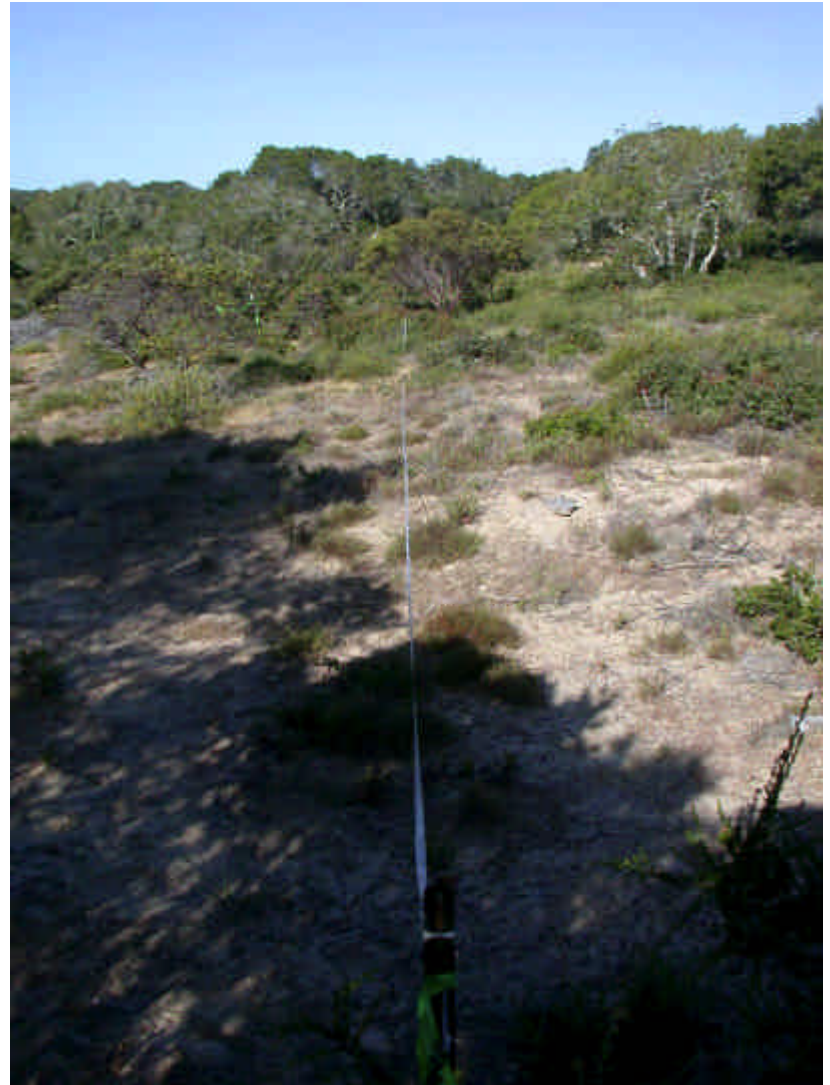


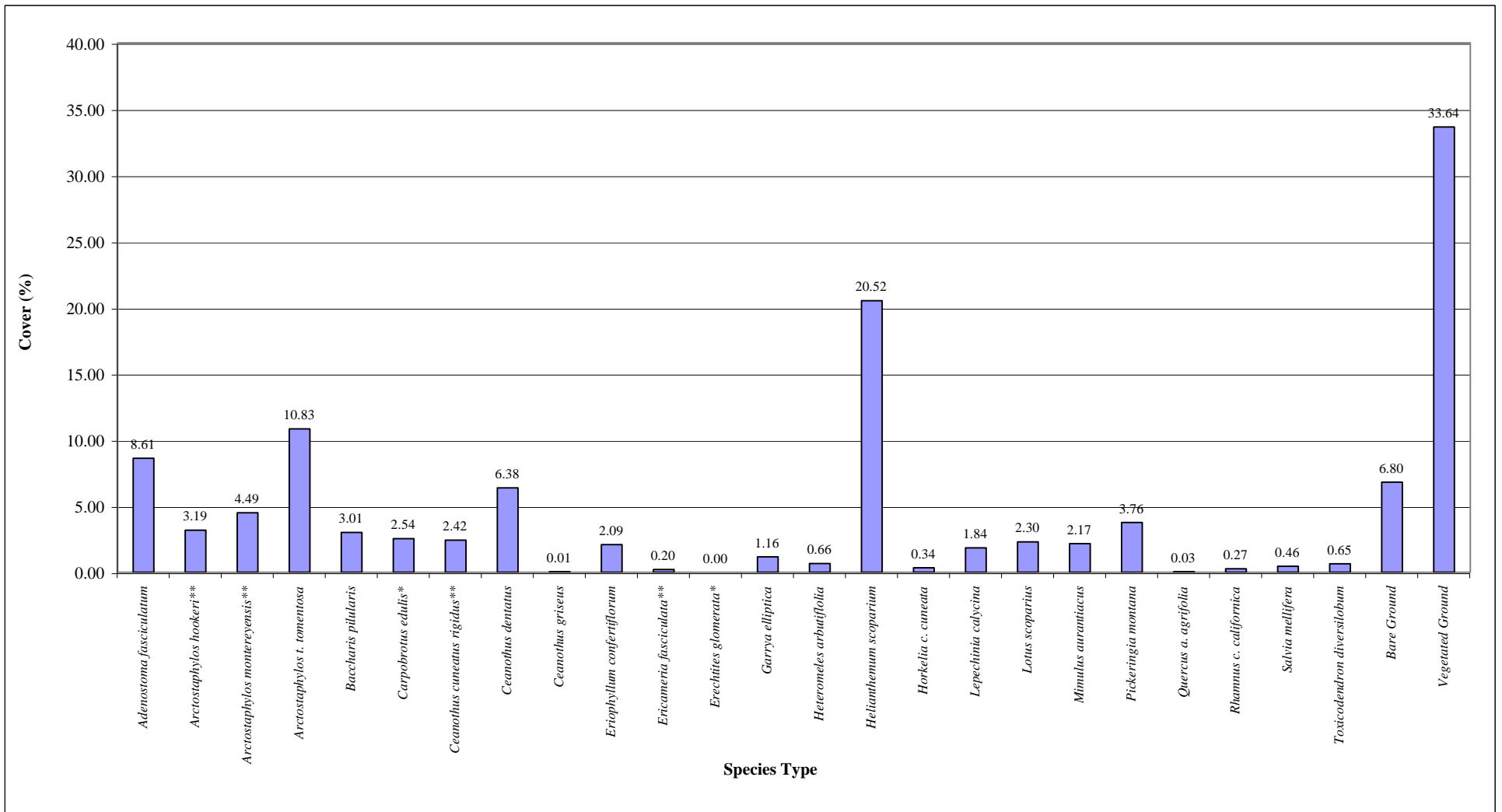
## **FIGURES**



OE-11 Transect T3



OE-11 Transect T7



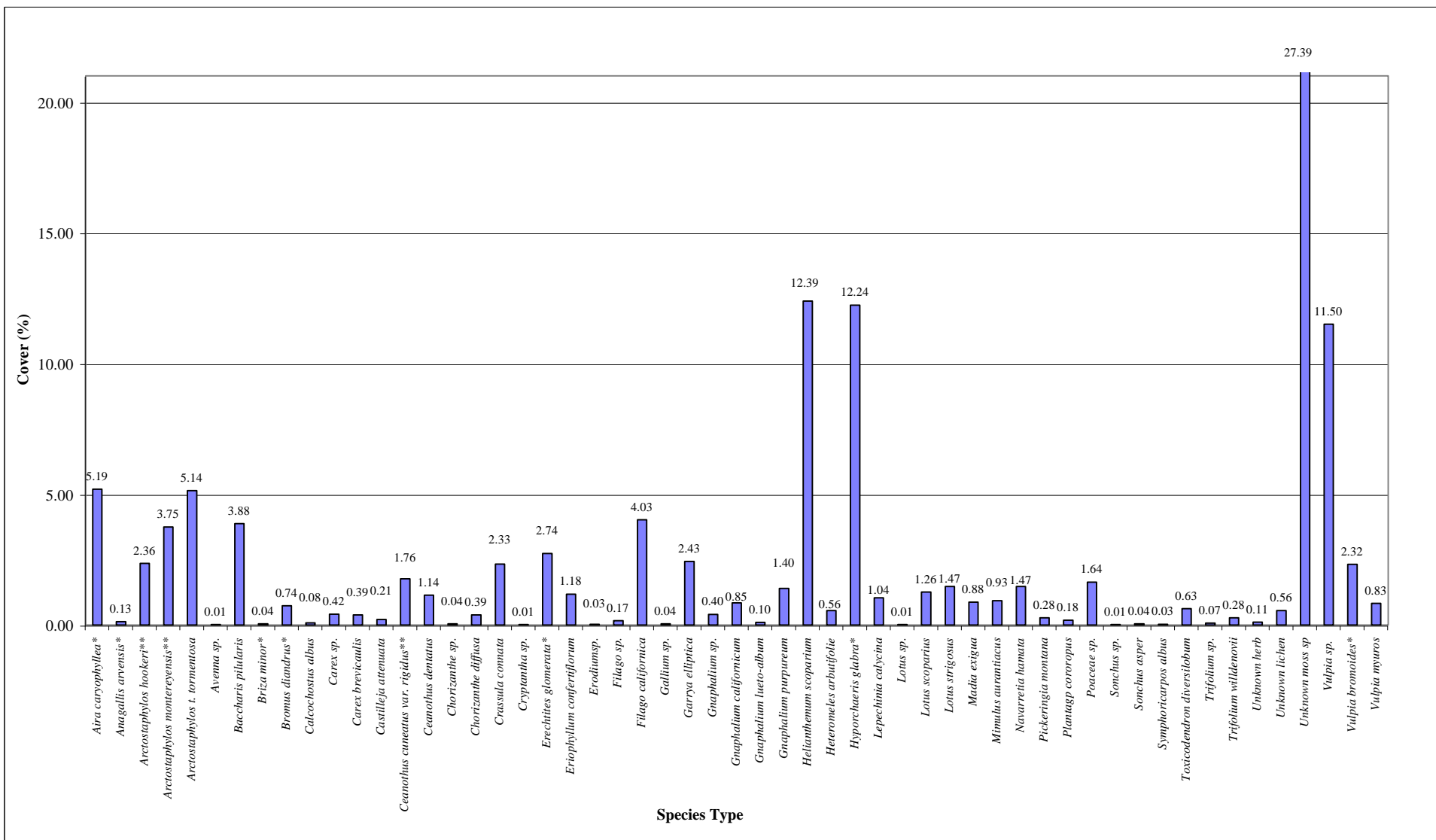
Percent Cover by Shrub Species  
 Bare and Vegetated Ground  
 OE-10A Line-Intercept Sampling  
 2002 Annual Monitoring Report  
 Former Fort Ord, Monterey County, California

FIGURE  
**2**



\* Non-native species

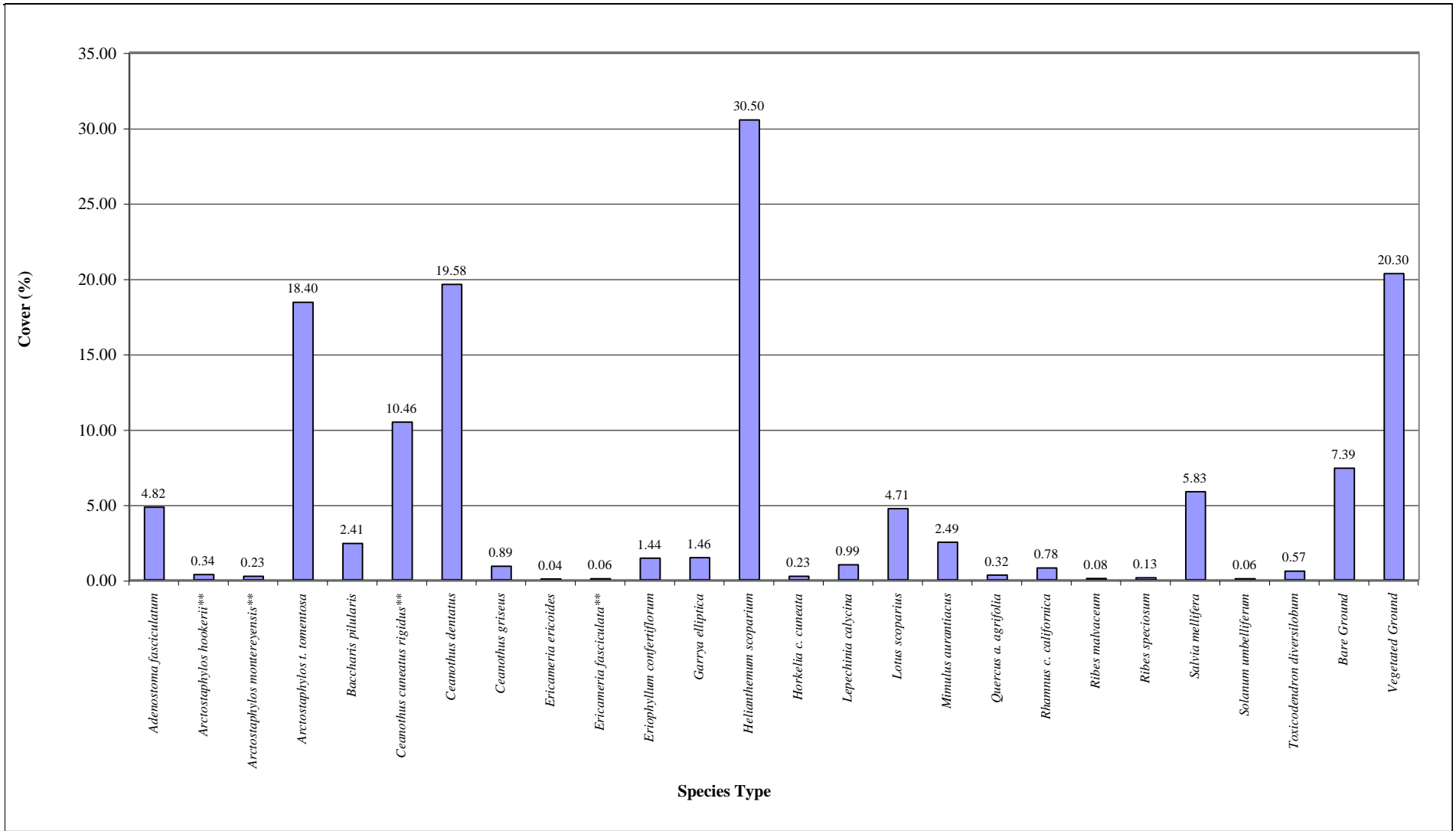
\*\* HMP species



**Average Percent Cover by Herbaceous Species**  
**OE-10A Quadrat Sampling**  
 2002 Annual Monitoring Report  
 Former Fort Ord, Monterey County, California

**FIGURE**  
**3**

\*Non-native species  
 \*\*HMP species

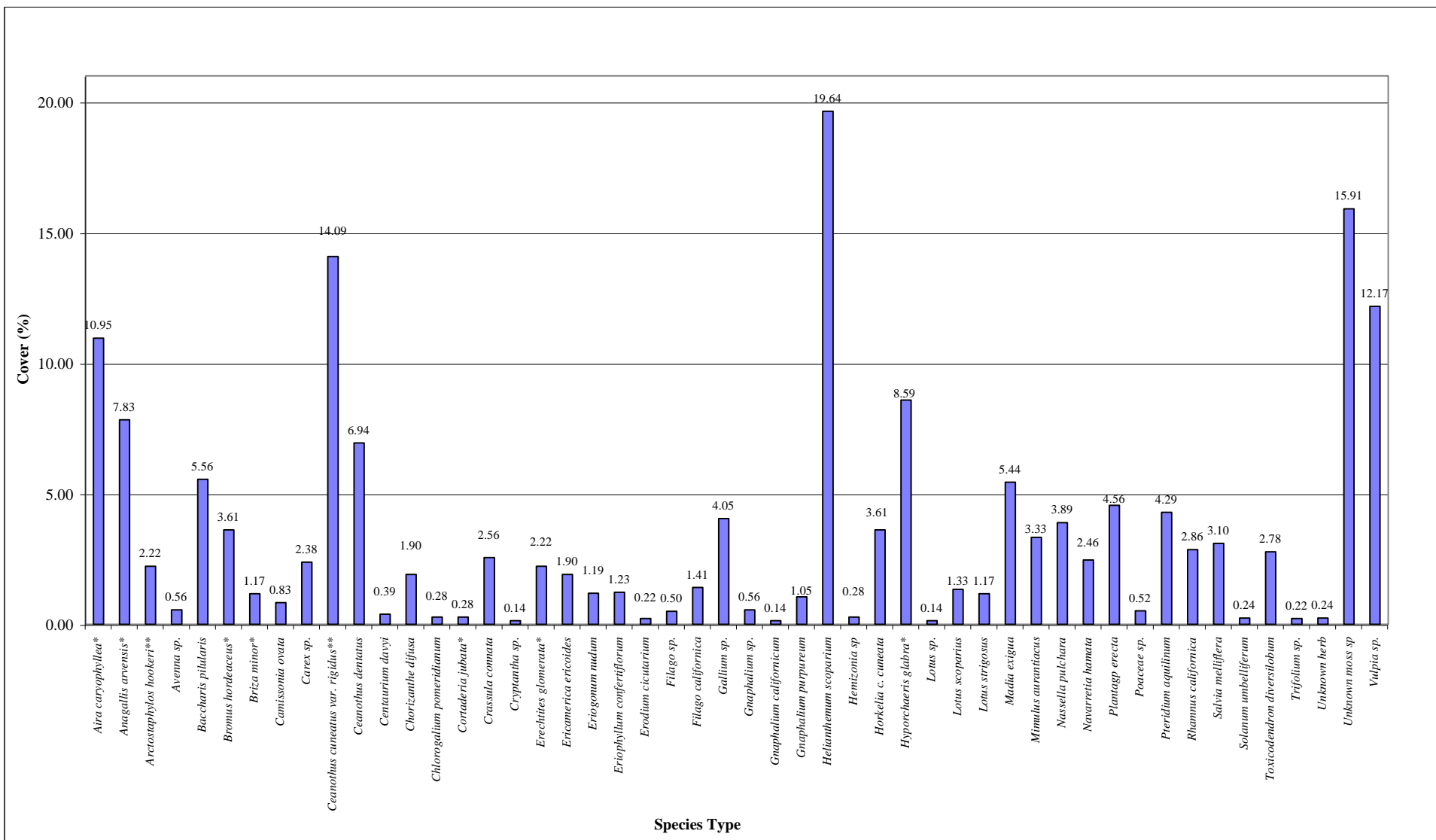


Percent Cover by Shrub Species  
 Bare and Vegetated Ground  
 OE-10B Line-Intercept Sampling-Burned Areas  
 2002 Annual Monitoring Report  
 Former Fort Ord, Monterey County, California

FIGURE  
**4**



\*\* HMP species



Average Percent Cover by Shrub Species  
 OE-10B Quadrat Sampling-Burned Areas  
 2002 Annual Monitoring Report  
 Former Fort Ord, Monterey County, California

FIGURE  
 5

DRAWN  
 tag

Job Number  
 55074 00171

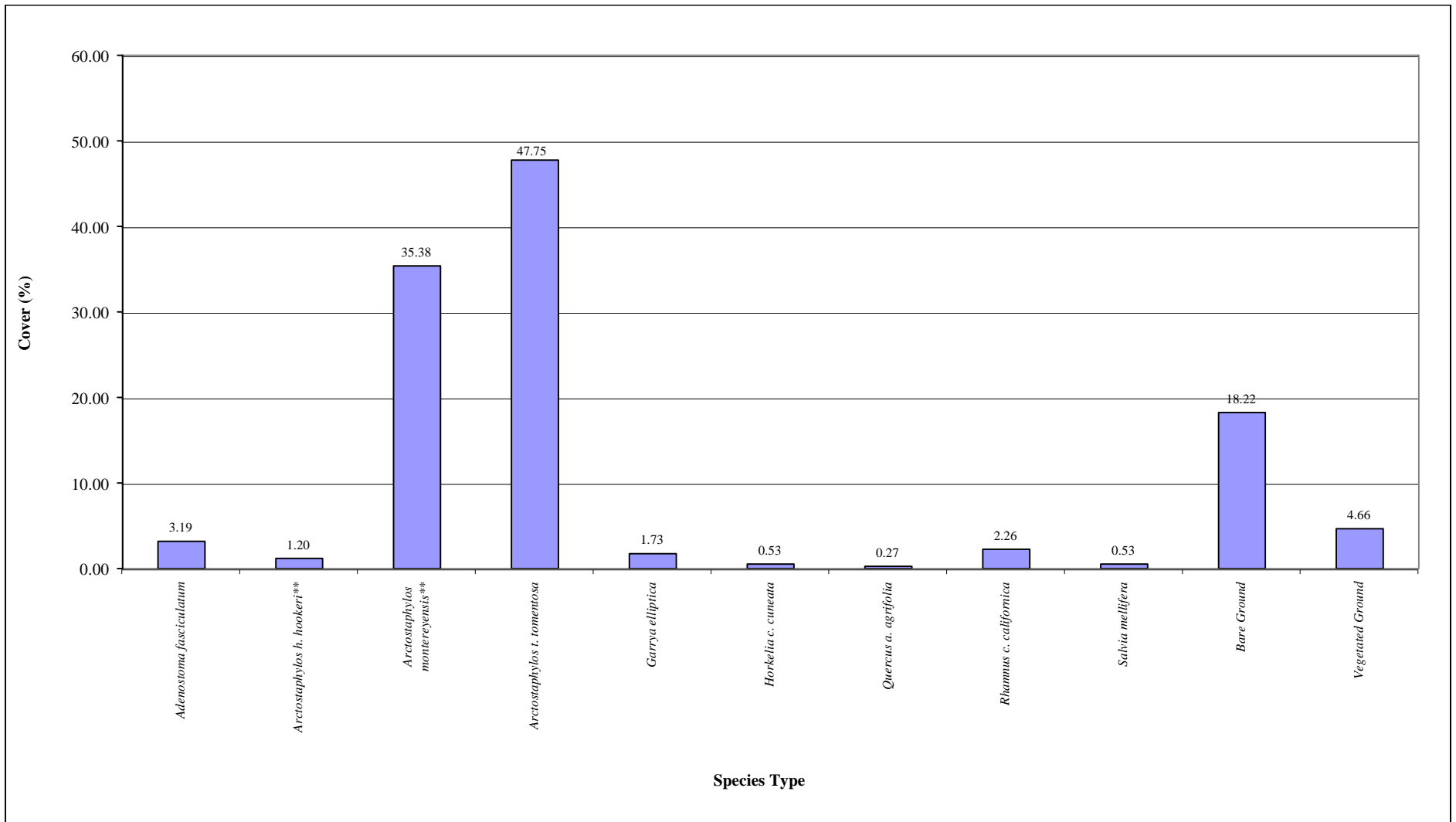
Approved

DATE  
 Sep-02

REVISED DATE

\*Non-native species

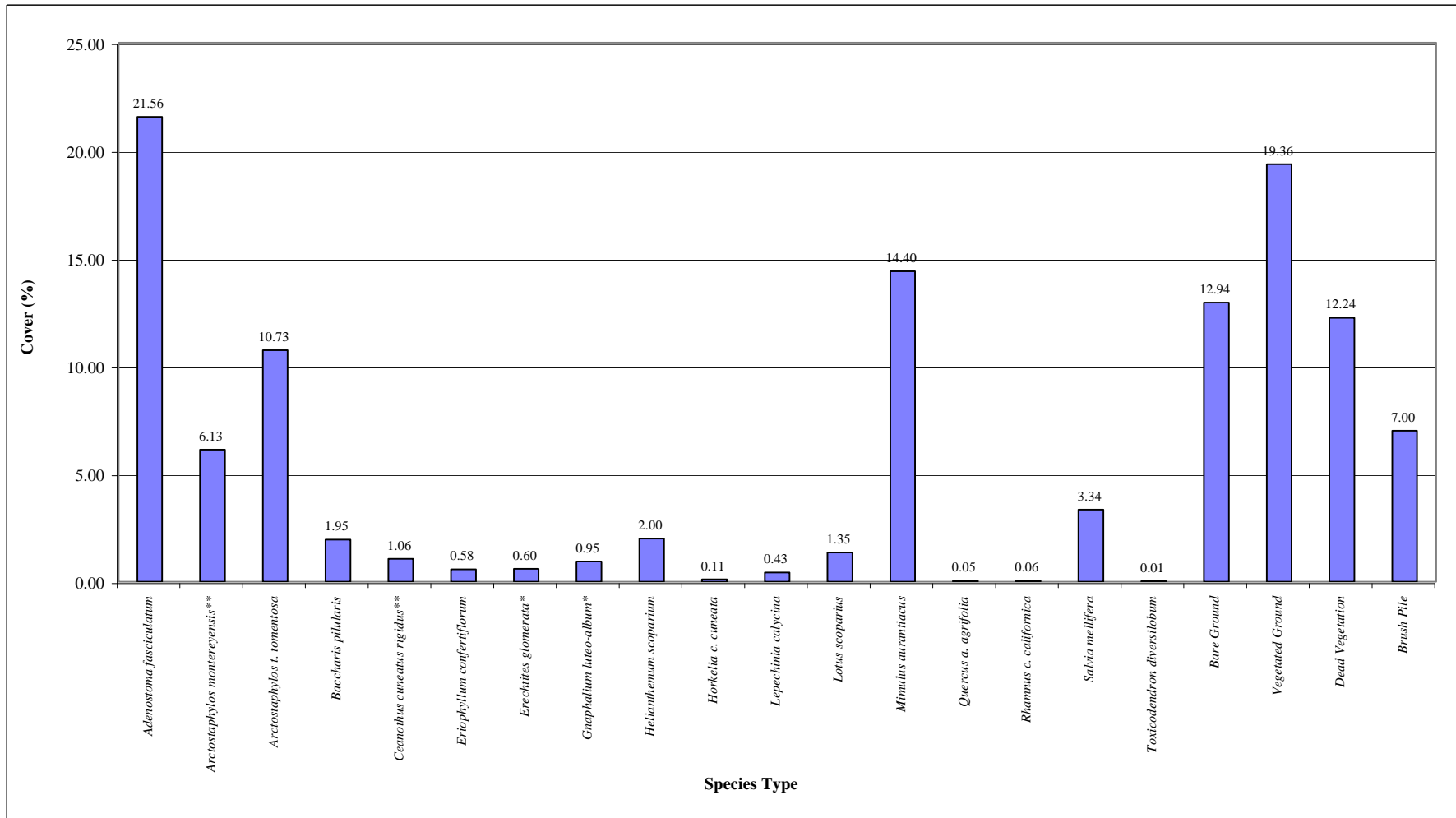
\*\*HMP species



Percent Cover by Shrub Species  
 Bare and Vegetated Ground  
 OE Site 10B Line-Intercept Sampling-Clipped Areas  
 2002 Annual Monitoring Report  
 Former Fort Ord, Monterey County, California

FIGURE  
**6**

\*\* HMP Species



Percent Cover by Shrub Species  
 OE-11 Line-Intercept Sampling  
 Bare and Vegetated Ground  
 2002 Annual Monitoring Report  
 Former Fort Ord, Monterey County, California

FIGURE  
**7**

DRAWN  
 tag

Job Number  
 55074 00171

Approved

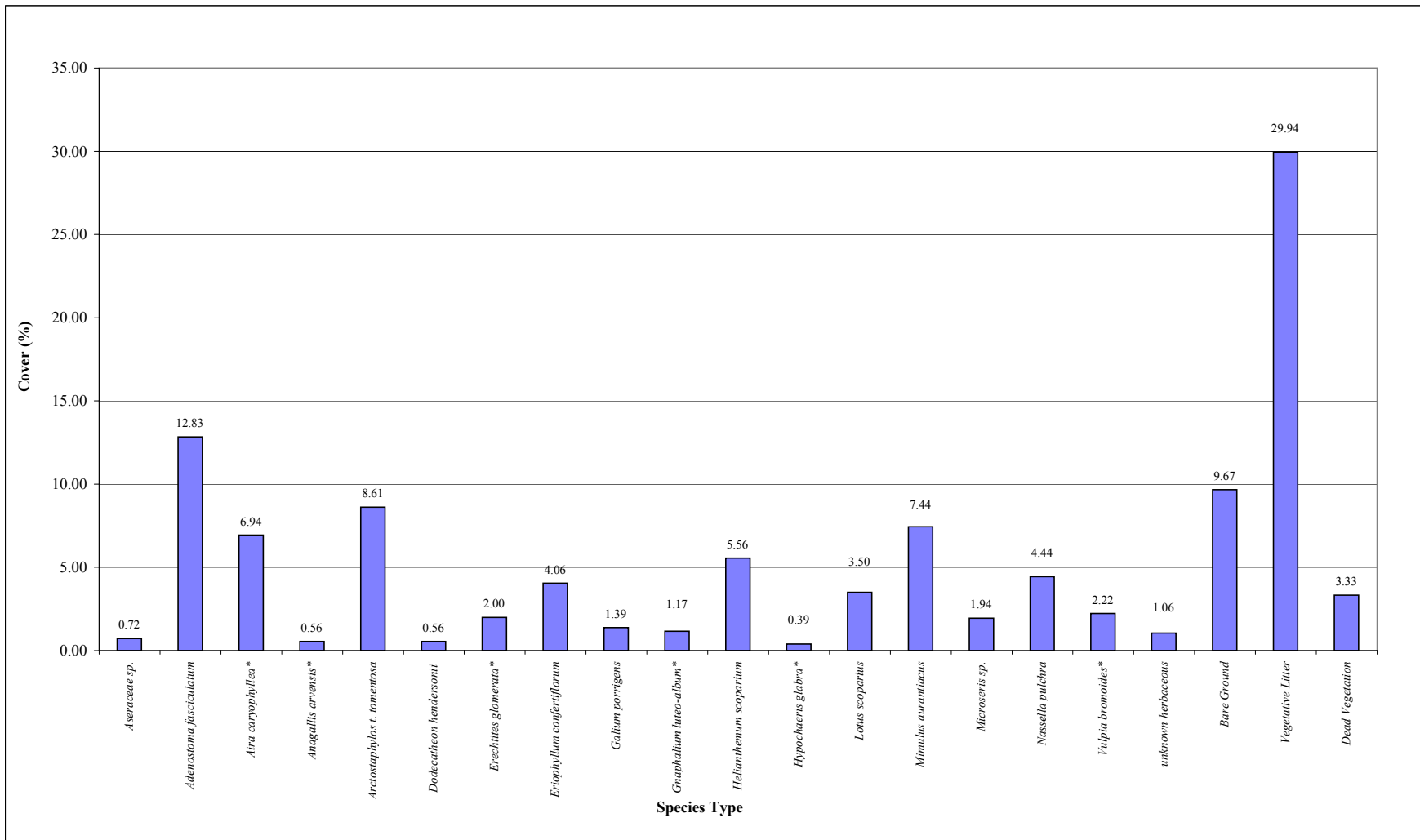
DATE  
 Aug-02

REVISED DATE

\* Non-native species

\*\* HMP species





**Average Percent Cover by Species**  
**OE-11 Quadrat Sampling**  
 2002 Annual Monitoring Report  
 Former Fort Ord, Monterey County, California

**FIGURE**  
**8**

DRAWN  
tag

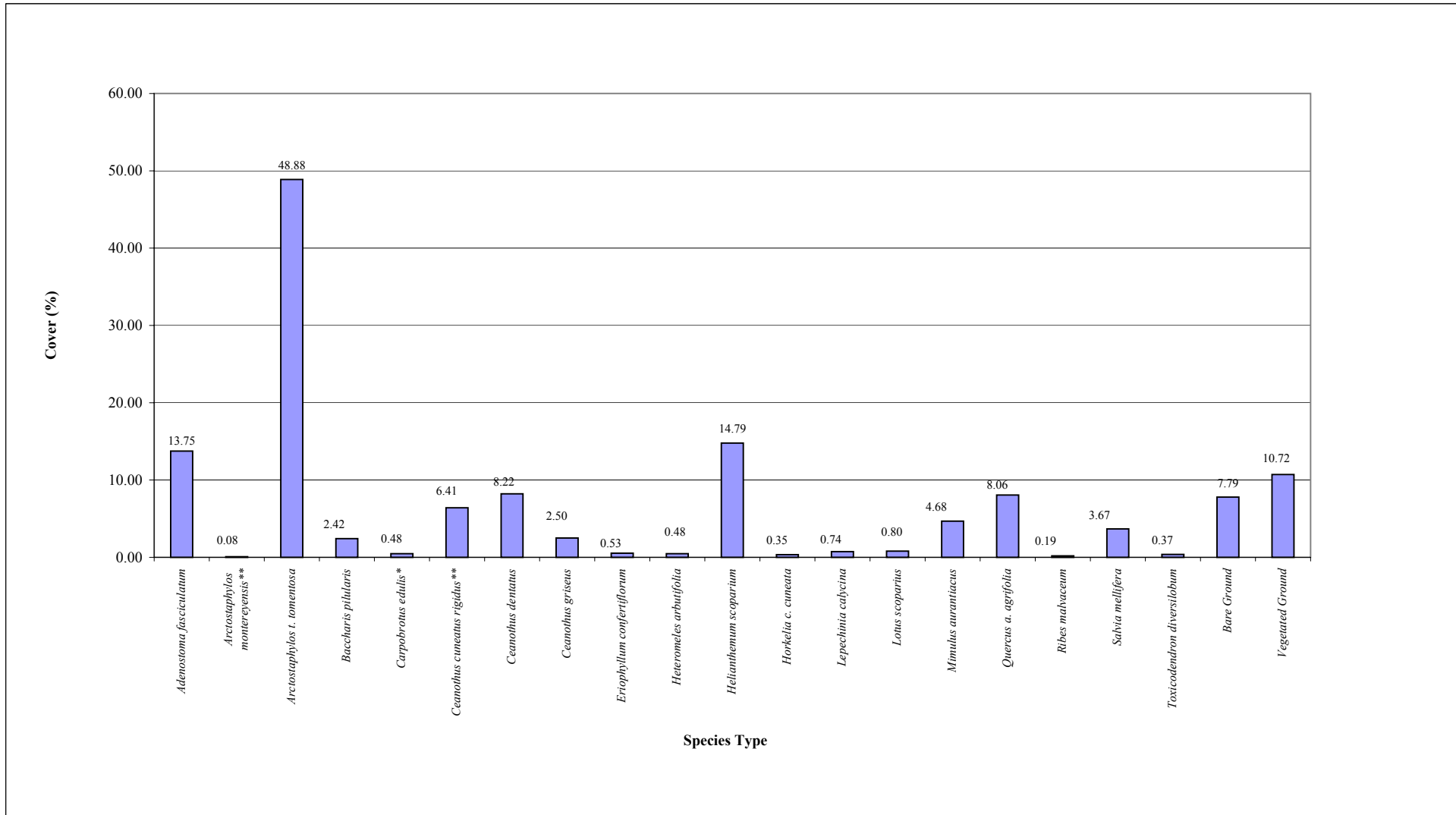
Job Number  
55074 00171

Approved

DATE  
Aug-02

REVISED DATE

\*Non-native species

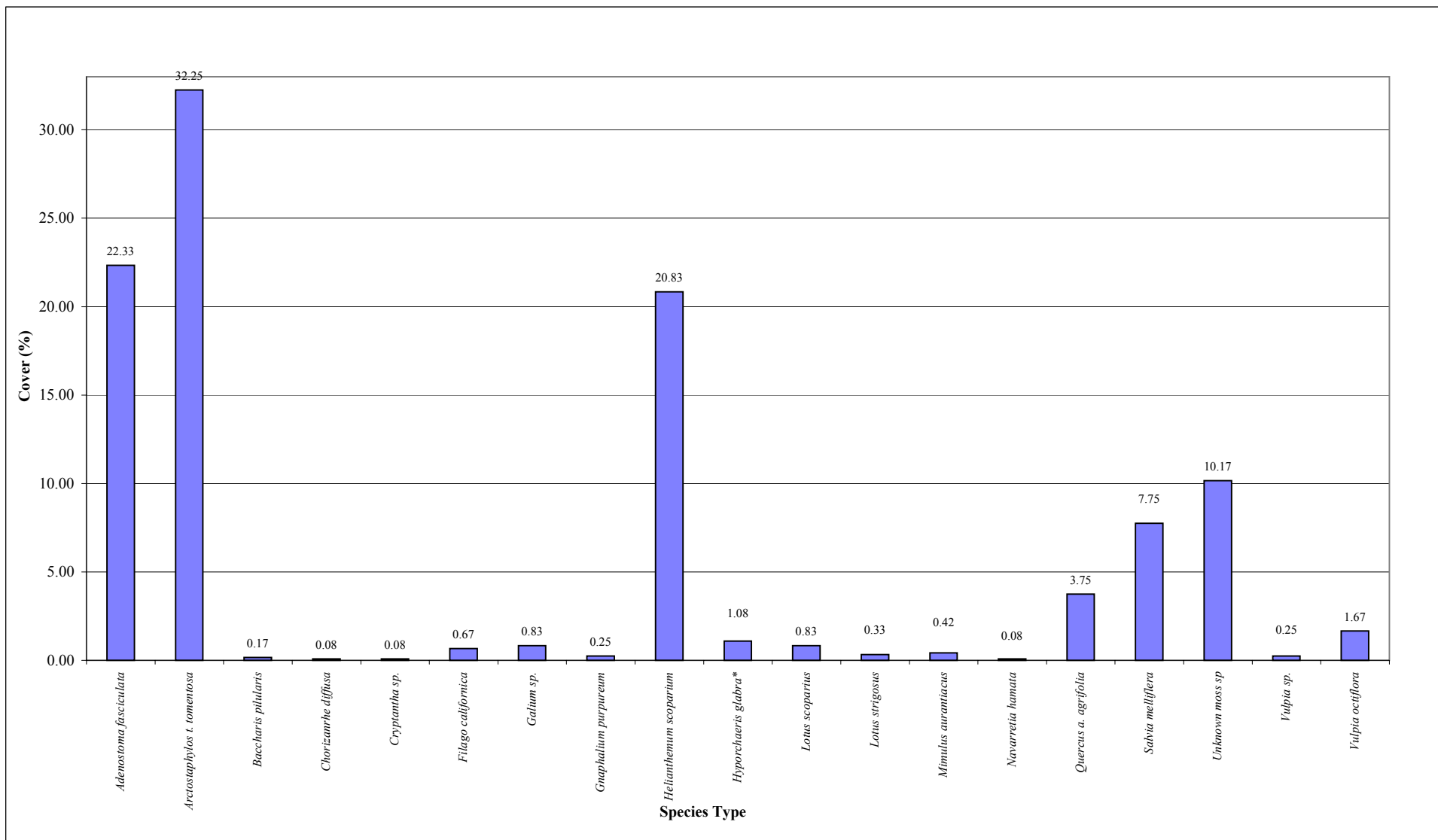


Percent Cover by Shrub Species  
 Bare and Vegetated Ground  
 OE-19 Line-Intercept Sampling  
 2002 Annual Monitoring Report  
 Former Fort Ord, Monterey County, California

FIGURE  
**9**

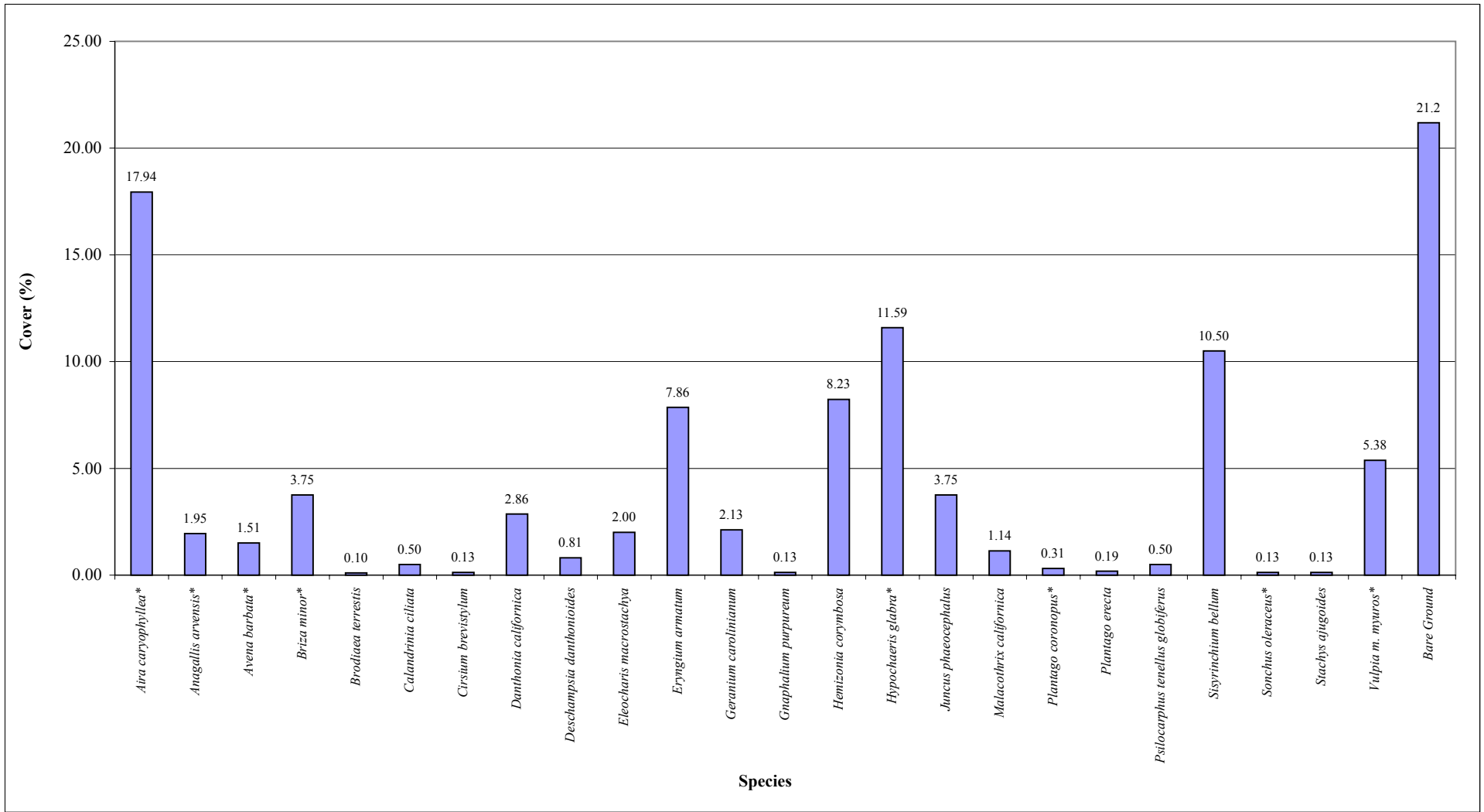


\* Non-native species  
 \*\* HMP species



Average Percent Cover by Species  
 OE-19 Quadrat Sampling  
 2002 Annual Monitoring Report  
 Former Fort Ord, Monterey County, California

\*Non-native species  
 \*\* HMP species



\* Non-native species

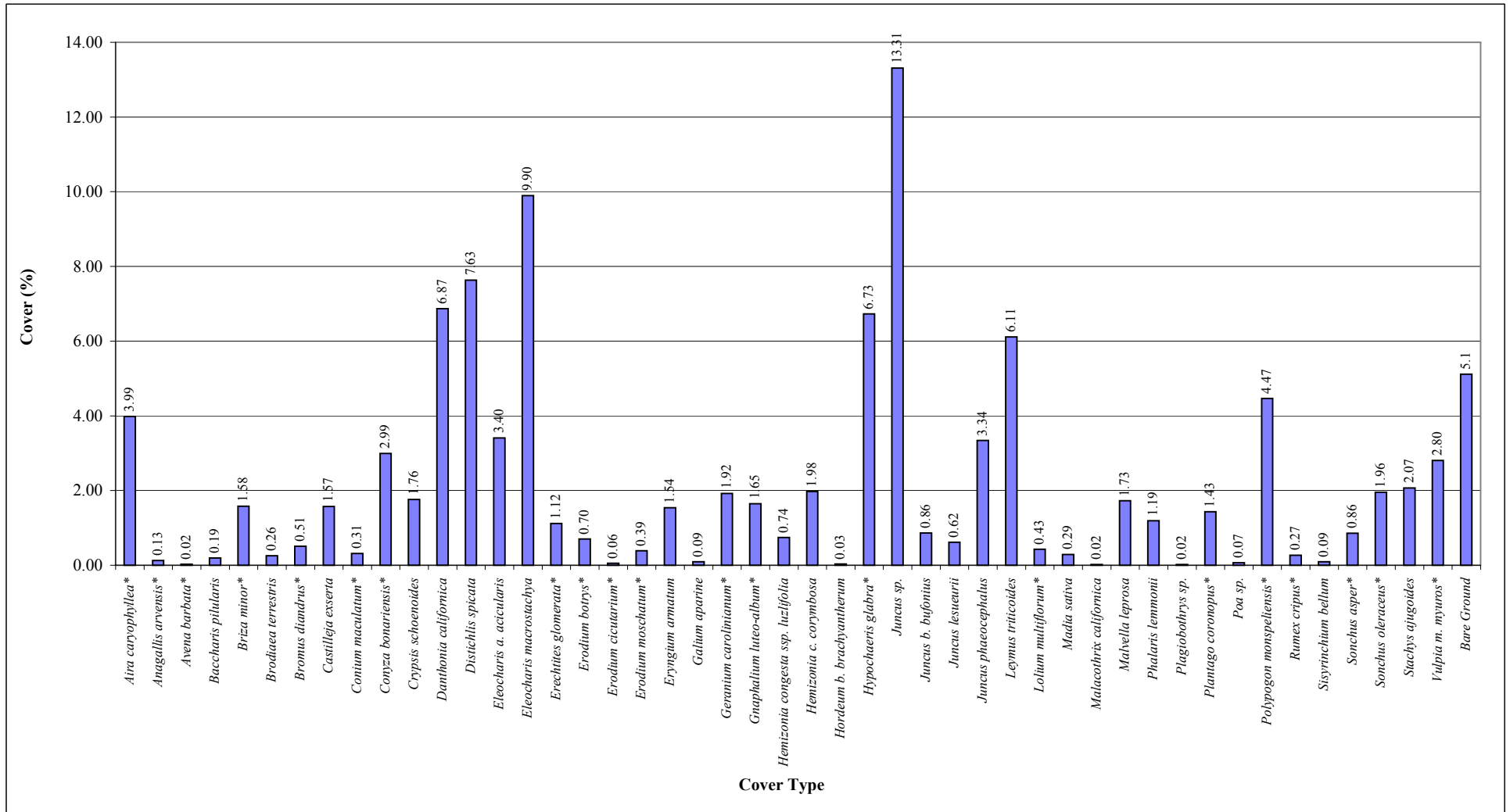




Figure 13. Waterbody 42



Figure 14. Machine Gun Flats

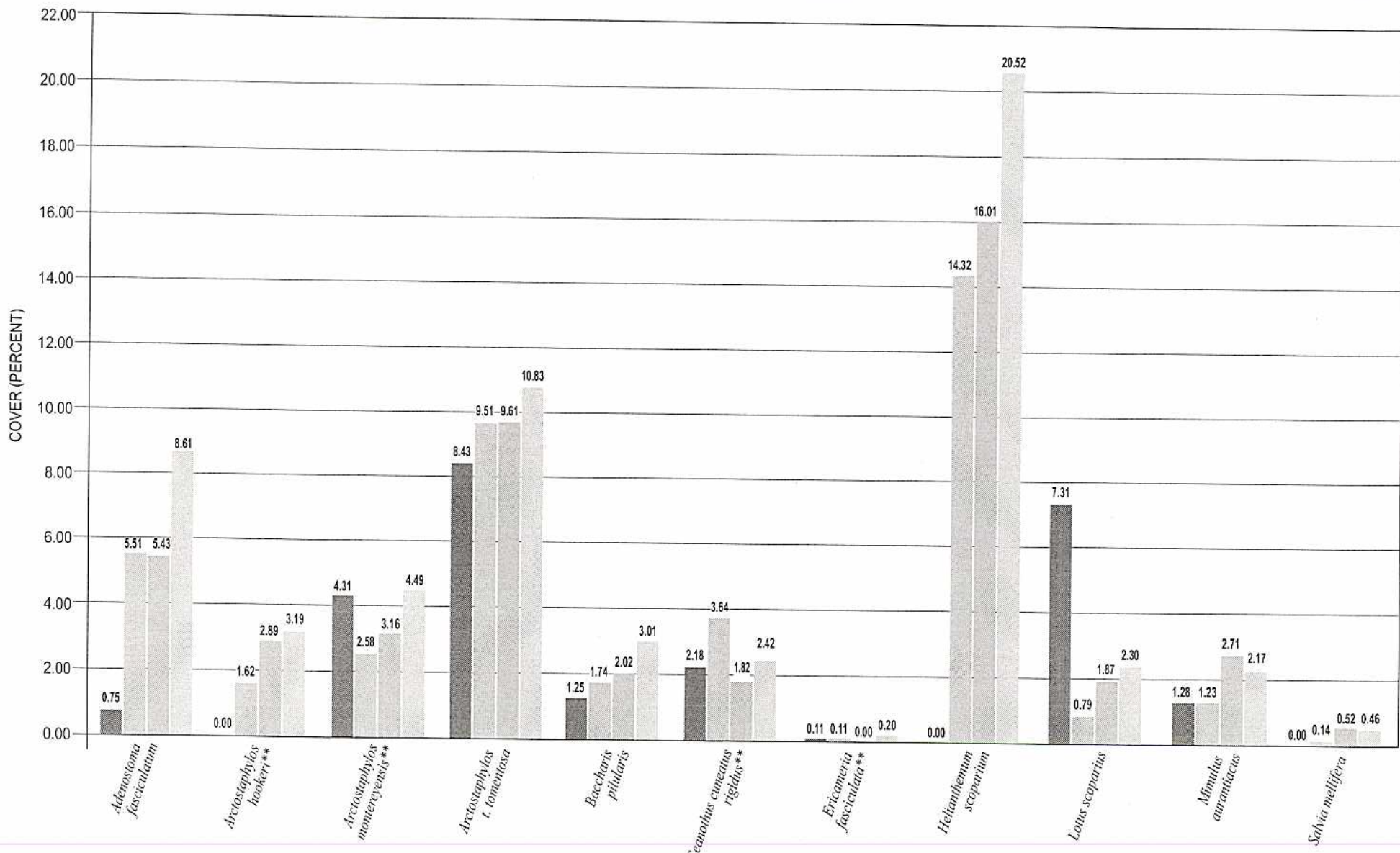




**Line-Intercept Sampling**



**Quadrat Sampling.**



**KEY**

- 1999 DATA
- 2000 DATA
- 2001 DATA
- 2002 DATA

\*\* Denotes HMP species.



**MACTEC**

DRAWN CN JOB NUMBER 55074 00171

**Percent Cover by Species**  
**OE 10A Shrub Species/**  
**1999, 2000, 2001, and 2002 Results**  
 2002 Annual Monitoring Report  
 Former Fort Ord, Monterey County, California

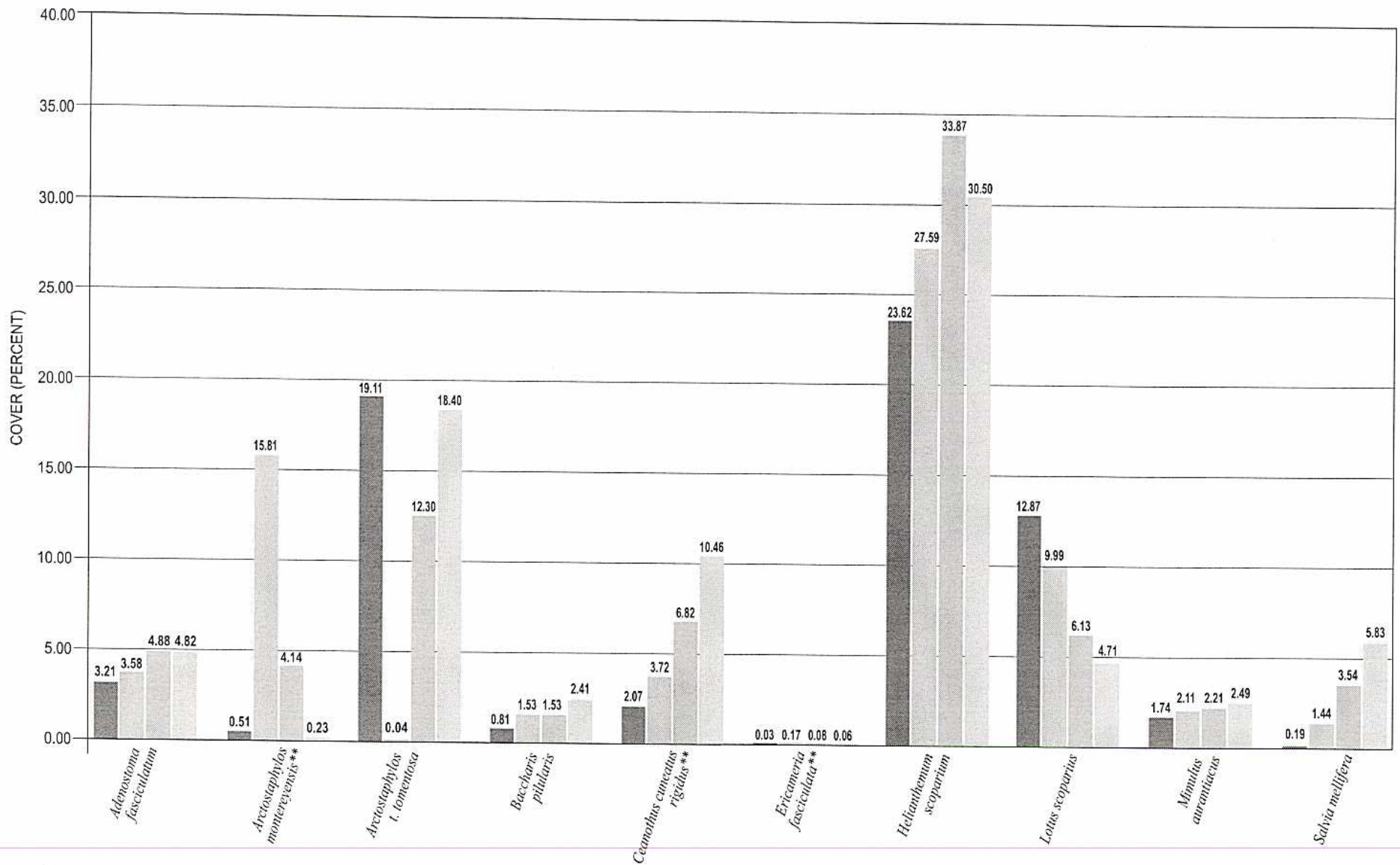
APPROVED [Signature] DATE 11/02

FIGURE

**16**

REVISED





**KEY**

- 1999 DATA
- 2000 DATA
- 2001 DATA
- 2002 DATA

\*\* Denotes HMP species.



**MACTEC**

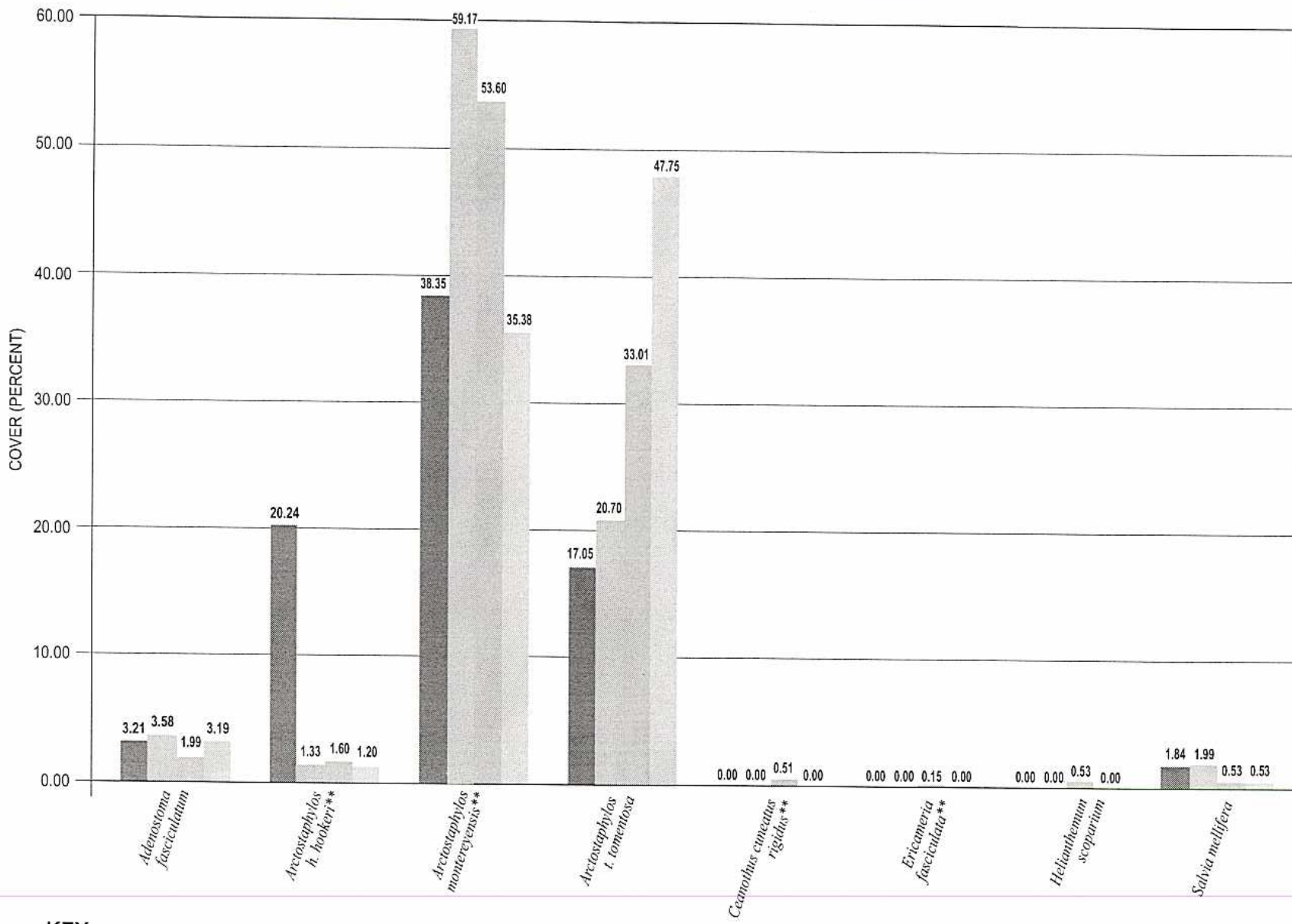
DRAWN CN JOB NUMBER 55074 00171

**Percent Cover by Species  
OE 10B Burn Areas Shrub Species/  
1999, 2000, 2001, and 2002 Results  
2002 Annual Monitoring Report  
Former Fort Ord, Monterey County, California**

FIGURE

**17**


APPROVED DATE 11/02 REVISED



**KEY**

- 1999 DATA
- 2000 DATA
- 2001 DATA
- 2002 DATA

\*\* Denotes HMP species.



**MACTEC**

DRAWN: CN  
 JOB NUMBER: 55074 00171

**Percent Cover by Species**  
**OE 10B Clipped Areas Shrub Species/**  
**1999, 2000, 2001, and 2002 Results**  
 2002 Annual Monitoring Report  
 Former Fort Ord, Monterey County, California

APPROVED

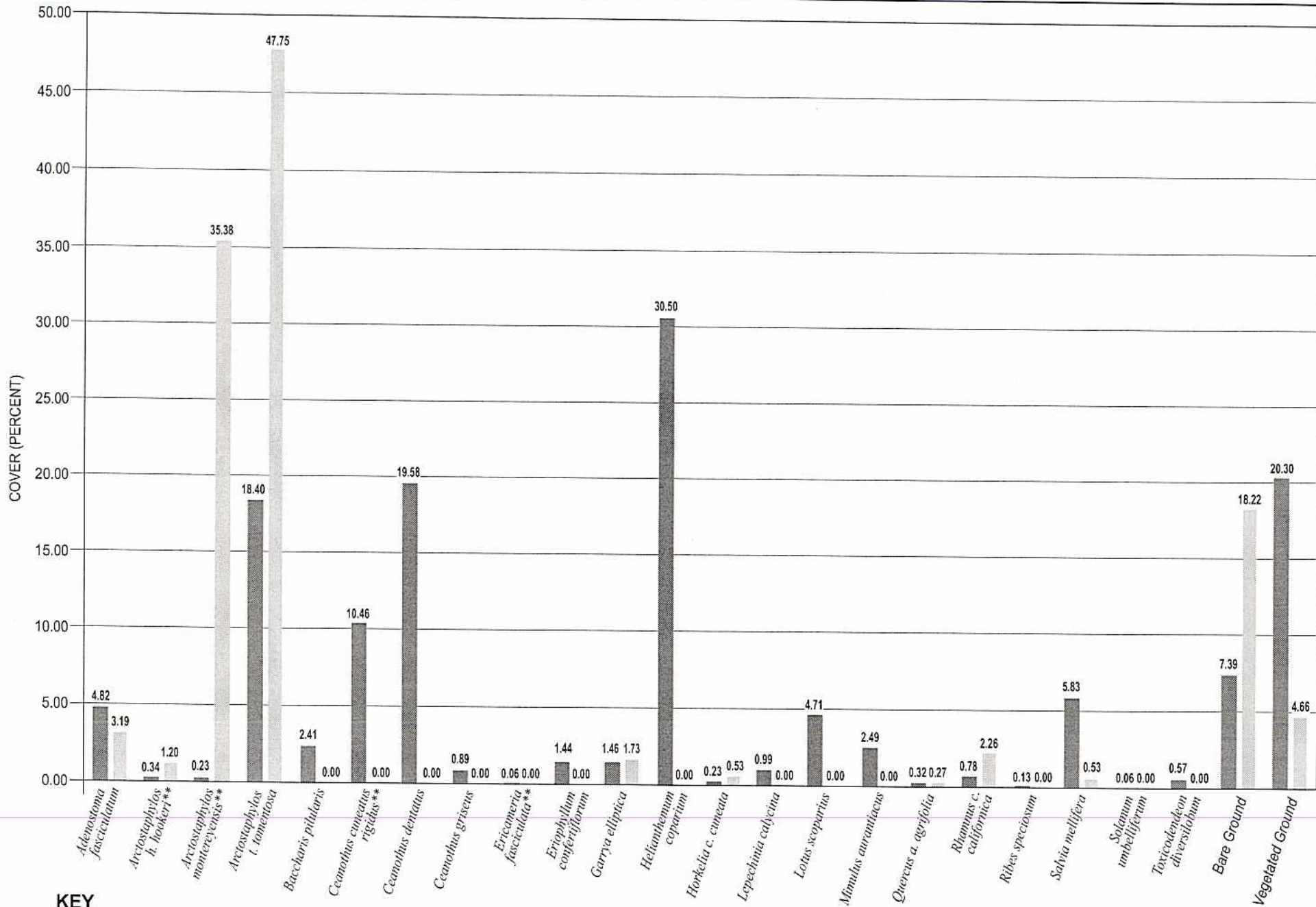


DATE  
11/02

REVISED

FIGURE

**18**



**KEY**

- BURNED DATA
- CLIPPED DATA

\*\* Denotes HMP species.



**MACTEC**

DRAWN  
CN

JOB NUMBER  
55074 00171

**Percent Cover by Species**

**OE 10B Clipped and Burned Areas/Comparison - 2002**  
2002 Annual Monitoring Report  
Former Fort Ord, Monterey County, California

APPROVED

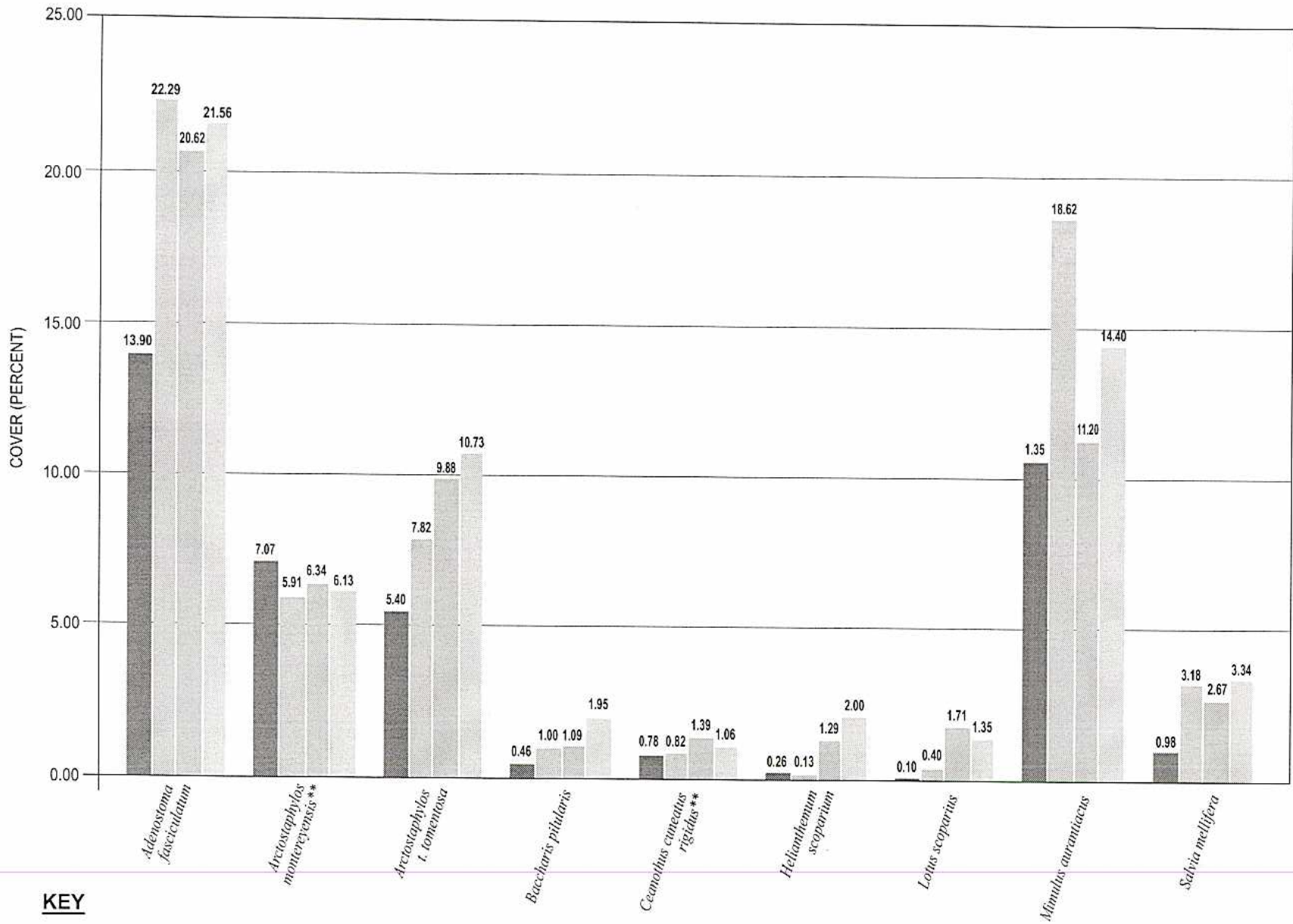
DATE  
11/02

FIGURE

**19**

REVISED

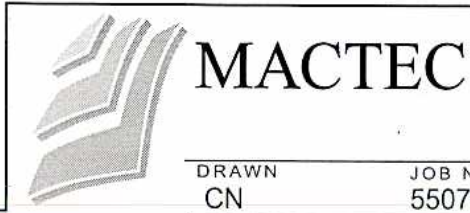




**KEY**

- 1999 DATA
- 2000 DATA
- 2001 DATA
- 2002 DATA

\*\* Denotes HMP species.

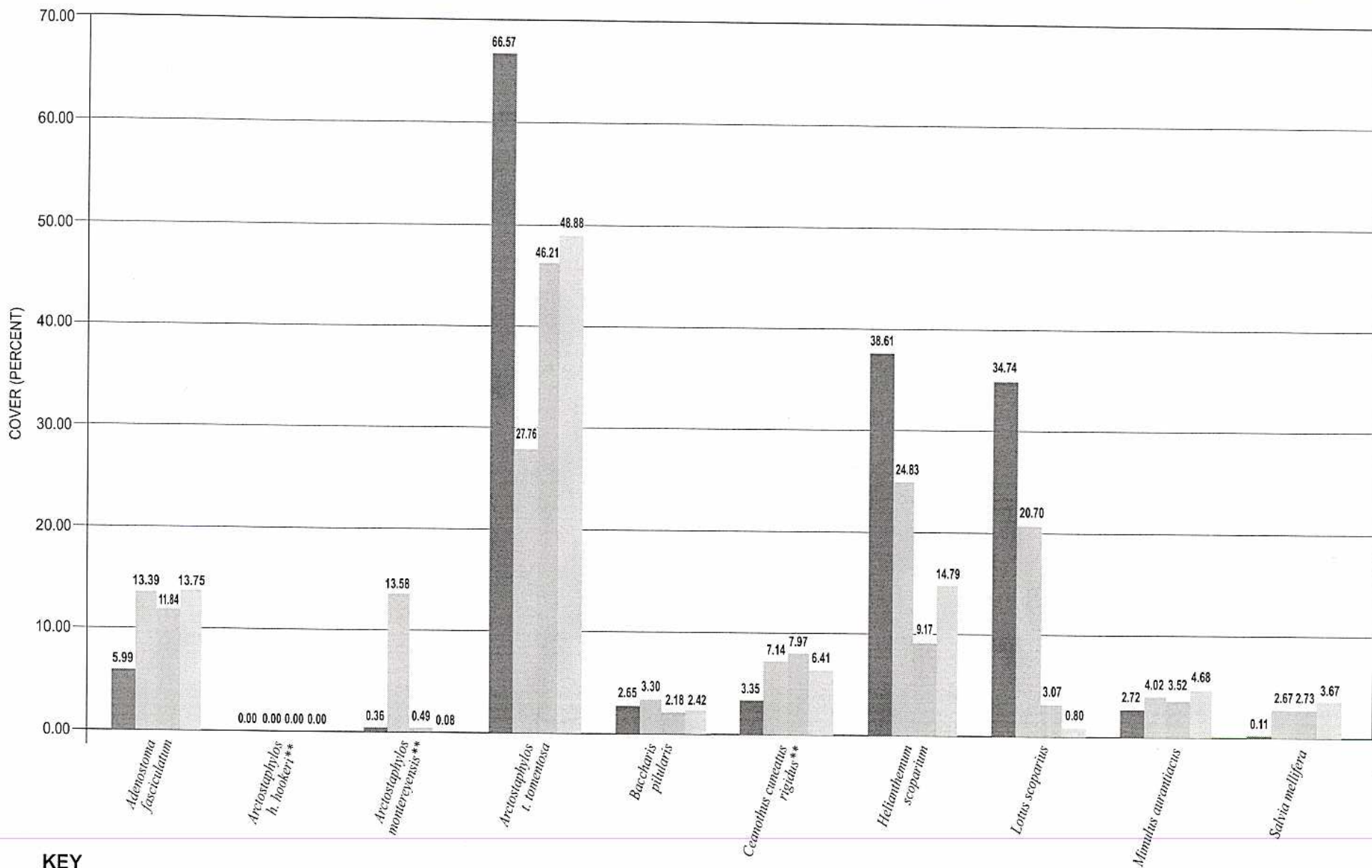


**Percent Cover by Species  
OE Site 11 Shrub Species -  
1999, 2000, 2001, and 2002 Results**  
2002 Annual Monitoring Report  
Former Fort Ord, Monterey County, California

FIGURE

**20**

DRAWN CN	JOB NUMBER 55074 00171	APPROVED 	DATE 11/02	REVISED
-------------	---------------------------	--------------	---------------	---------



**KEY**

- 1999 DATA
- 2000 DATA
- 2001 DATA
- 2002 DATA

\*\* Denotes HMP species.



**MACTEC**

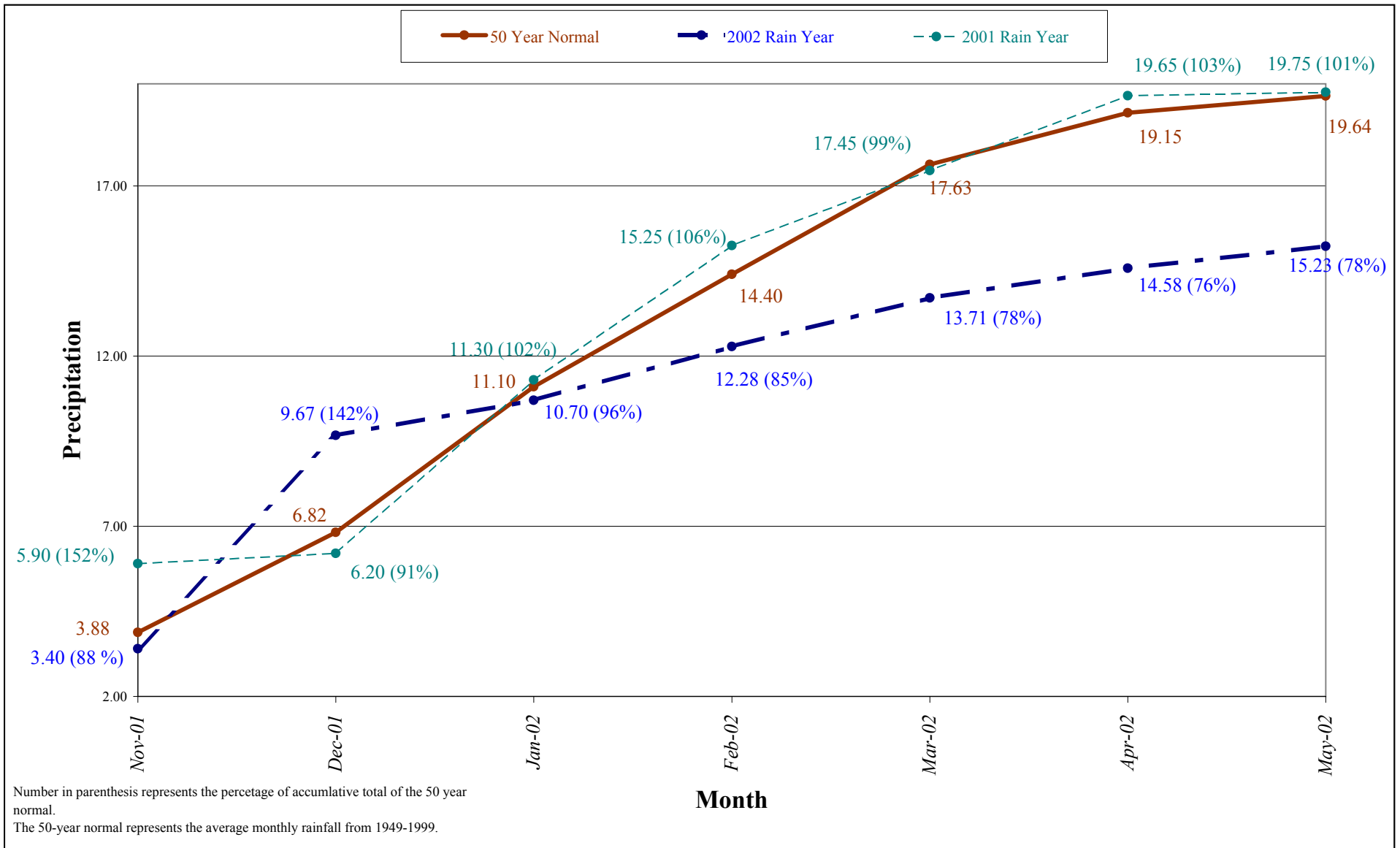
DRAWN CN JOB NUMBER 55074 00171

**Percent Cover by Species**  
**OE 19 Shrub Species/**  
**1999, 2000, 2001, and 2002 Results**  
 2002 Annual Monitoring Report  
 Former Fort Ord, Monterey County, California

APPROVED DATE 11/02 REVISED

FIGURE

**21**



2002 Rain Year (July 2001 - June 2002)  
Inches of Precipitation per Month  
2002 Annual Monitoring Report  
Former Fort Ord, Monterey County, California

FIGURE  
**22**

DRAWN  
tag

Job Number  
55074

Approved

DATE  
Aug-02

REVISED DATE

\*Non-native species