

## Former Fort Ord Operable Unit 2 Landfills Data and Status

HTW BCT, November 14, 2018

### October 2018 Key Events for OU2 Landfills

- TTU operations.
- Owl box maintenance
- Landfill winterization activities

### November 2018 Key Events for OU2 Landfills

- TTU operations.
- 2018 Q4 landfill gas perimeter probe monitoring 11/19
- Continue with Landfill winterization activities

The logo for Ahtna, featuring the word "Ahtna" in a stylized, blue, cursive font.

**Thermal Treatment Unit  
Operation Summary  
2006 - 2018**

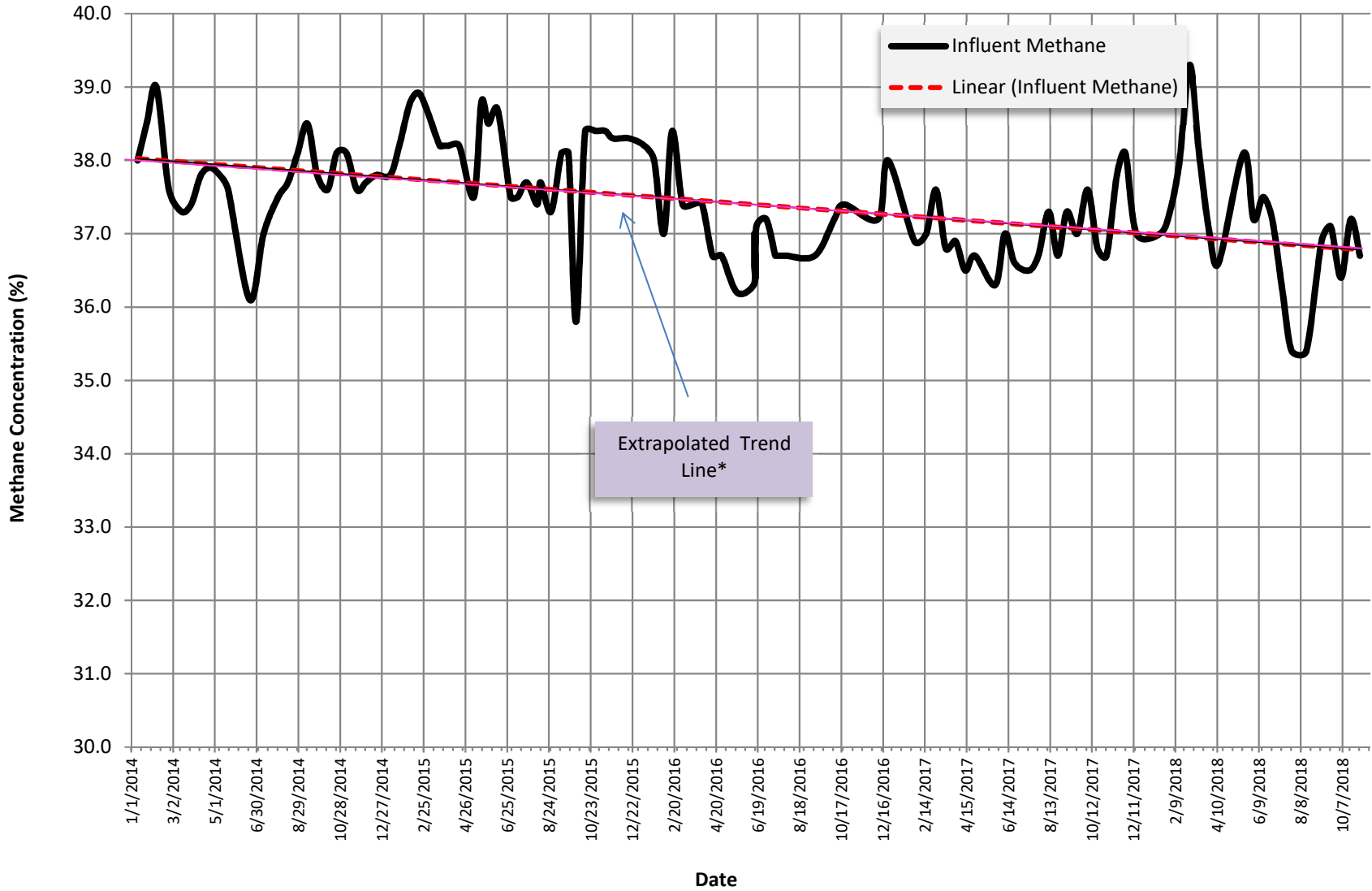
<b>TREATMENT SYSTEM OPERATION SUMMARY</b>	
<b>Treatment System Start Date:</b>	<b>6/4/2001</b>
<b>TTU Start Date:</b>	<b>4/4/2006</b>
<b>Last Reading Date/Time:</b>	<b>11/1/2018 14:12</b>
<b>Historical through 2017 (TTU only):</b>	
Total TTU Hours:	<b>102,912</b>
Total TTU Hours Operated:	<b>33,578</b>
% TTU Operation:	<b>32.6%</b>
Total Pounds of Methane Removed:	<b>3,493,018</b>
<b>Current Year 2018:</b>	
Total Hours:	<b>7,296</b>
Total Hours Operated:	<b>1,468</b>
% TTU Operation:	<b>20%</b>
Total Pounds of Methane Removed:	<b>128,464</b>
<b>Cumulative (since TTU startup in 2006):</b>	
% TTU Operation:	<b>31.8%</b>
Total Pounds of Methane Removed:	<b>3,621,482</b>

Year	Operating Hours	Change from Previous Year	Methane			OU2 Groundwater COCs	
			Pounds Removed	Change from Previous Year	Pounds/week	Pounds Removed	Change from Previous Year
2007	4,035		532,130		10,205	6.2	
2008	2,838	-30%	288,458	-46%	5,532	3.1	-51%
2009	4,493	58%	448,154	55%	8,595	3.4	11%
2010	2,421	-46%	212,681	-53%	4,079	1.4	-60%
2011	2,543	5%	228,082	7%	4,374	1.4	0%
2012	2,509	-1%	229,397	1%	4,399	1.2	-13%
2013	2,116	-16%	187,779	-18%	3,601	1.1	-8%
2014	1,961	-7%	174,427	-7%	3,345	1.0	-11%
2015	2,653	35%	237,571	36%	4,556	1.3	29%
2016	2,039	-23%	178,645	-25%	3,426	0.9	-28%
2017	1,554	-24%	264,175	48%	5,066	0.6	-52%
2018	1,468		128,464		2,464		

**Thermal Treatment Unit  
Operation Summary  
2006 - 2018**

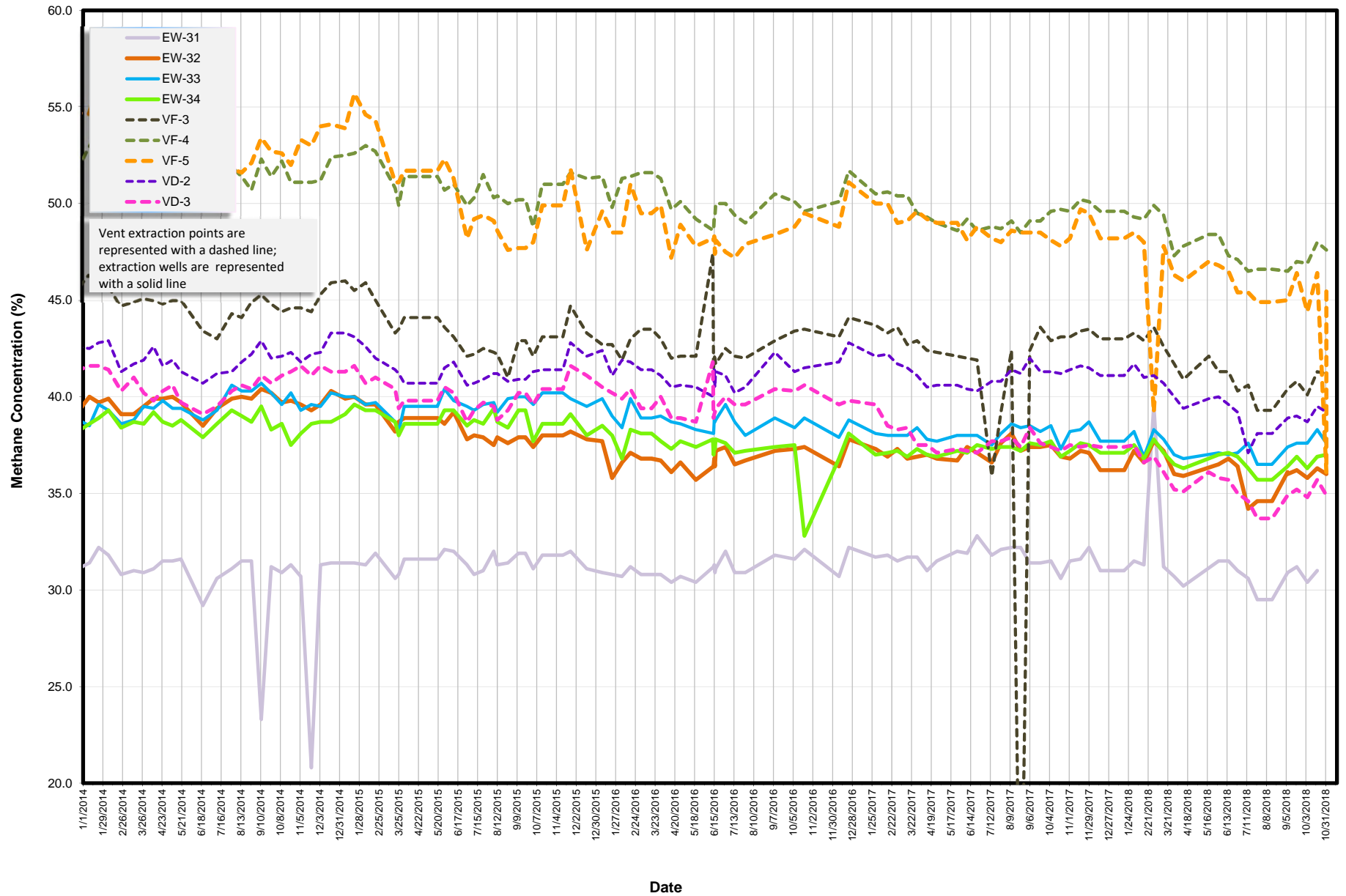
<b>EXTRACTION SYSTEM (2018)</b>						
<b>Location</b>	<b>Last Instantaneous Methane Reading (%)</b>	<b>Last Instantaneous Flow Rate Reading (scfm)</b>	<b>Current Methane Removal Rate (lbs/day)</b>	<b>2018 % Operation</b>	<b>2018 Methane Removed (Lbs)</b>	<b>% Contribution of Each Extraction Source</b>
<b>Area E</b>						
EP-36	36.5	25	538	20%	30,073	21%
<b>Area F</b>						
EW-31	31.0	1.0	18.3	18%	3,023	2%
EW-32	36.0	22.0	467.2	20%	25,559	18%
EW-33	37.6	16.0	354.8	19%	20,964	15%
EW-34	37.0	31.0	676.5	19%	37,874	26%
VF-3	41.2	6.0	145.8	20%	8,871	6%
VF-4	47.6	6.0	168.5	20%	8,276	7%
VF-5	36.1	21.0	447.2	21%	3,980	3%
<b>Area D</b>						
VD-2	39.2	1	23	20%	2,811	2%
VD-3	34.9	3.0	61.8	20%	2,776	2%
<b>MIXED</b>						
MIXED	36.7	96.0	2078.1	20%	121,993	100%

Methane Concentration Time Series Plot  
OU2 Landfill Extraction Sources  
01/01/2014 to present



\* Trend line generated from all data 1/1/14 to present

# Methane Concentration vs. Time OU2 Landfill Extraction Sources 1/1/2011 to present



Methane Concentration Time Series Plot  
OU2 Landfill Extraction Legs  
1/1/2014 to present

