

HTW BCT, September 17, 2021

## September – October 2021 Key Events for OU2 Landfills

- TTU Operations
- Quarterly Probe monitoring (Sept 7)
- MCHD Quarterly Inspection (Sept 8)
- Landfill mowing (North Area F only; Sept 20)
- Rodent Trapping

## November - December 2021 Key Events for OU2 Landfills

- TTU Operations
- Annual owl nest box cleaning
- MCHD Quarterly Inspection
- Quarterly Probe monitoring
- Rodent Trapping



*Ahtna*

**Thermal Treatment Unit  
Operation Summary  
2006 - 2021**

<b>TREATMENT SYSTEM OPERATION SUMMARY</b>	
<b>Treatment System Start Date:</b>	<b>6/4/2001</b>
<b>TTU Start Date:</b>	<b>4/4/2006</b>
<b>Last Reading Date/Time:</b>	<b>9/9/2021 14:16</b>
<b>Historical through 2020 (TTU only):</b>	
Total TTU Hours:	<b>129,192</b>
Total TTU Hours Operated:	<b>36,410</b>
% TTU Operation:	<b>28.2%</b>
Total Pounds of Methane Removed:	<b>3,736,267</b>
<b>Current Year 2021:</b>	
Total Hours:	<b>6,192</b>
Total Hours Operated:	<b>872</b>
% TTU Operation:	<b>14%</b>
Total Pounds of Methane Removed:	<b>74,788</b>
<b>Cumulative (since TTU startup in 2006):</b>	
% TTU Operation:	<b>27.5%</b>
Total Pounds of Methane Removed:	<b>3,811,055</b>

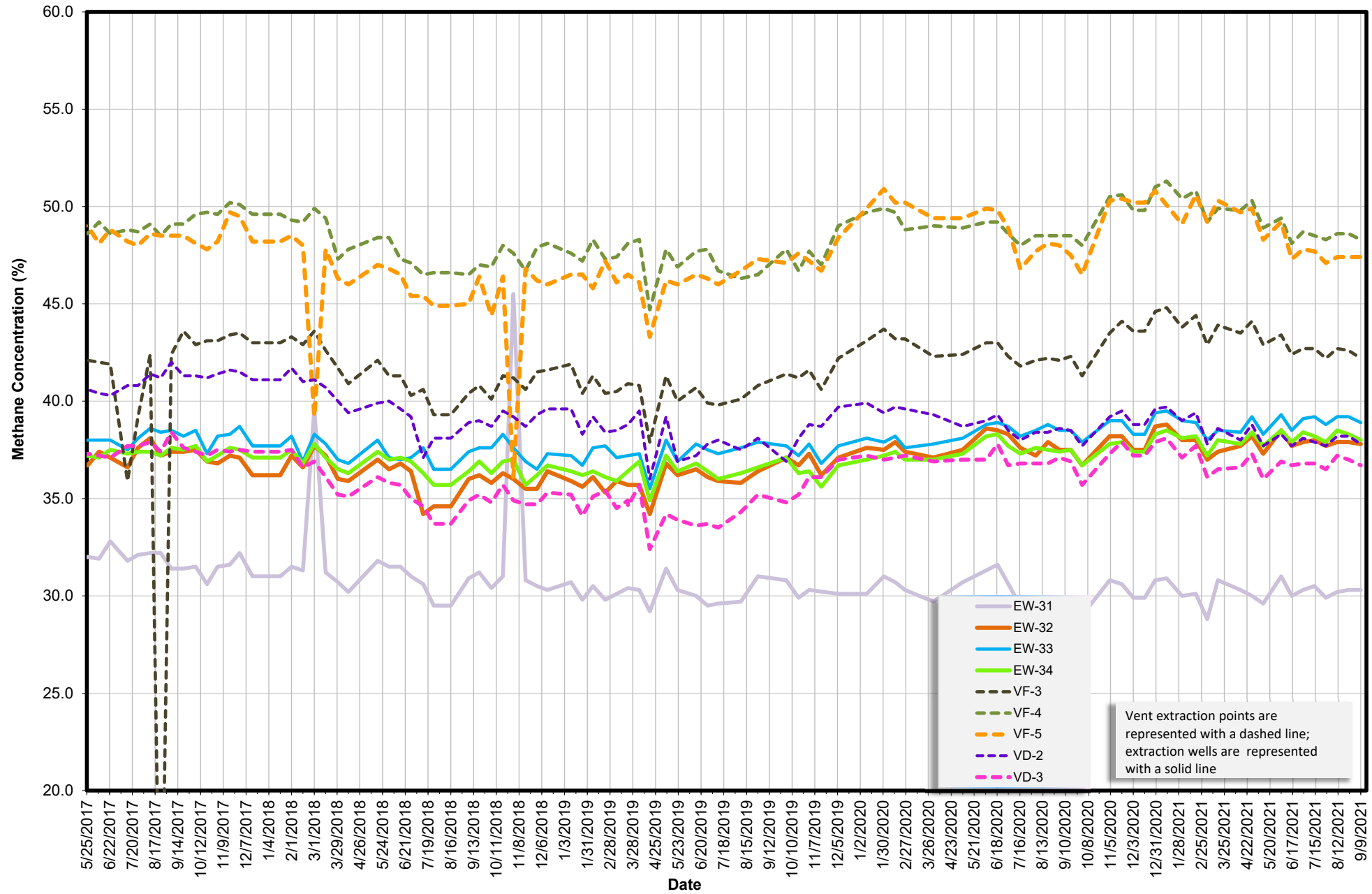
**Thermal Treatment Unit  
Operation Summary  
2006 - 2021**

Year	Operating Hours	Change from Previous Year	Methane			OU2 Groundwater COCs	
			Pounds Removed	Change from Previous Year	Pounds/week	Pounds Removed	Change from Previous Year
2007	4,035		532,130		10,205	6.2	
2008	2,838	-30%	288,458	-46%	5,532	3.1	-51%
2009	4,493	58%	448,154	55%	8,595	3.4	11%
2010	2,421	-46%	212,681	-53%	4,079	1.4	-60%
2011	2,543	5%	228,082	7%	4,374	1.4	0%
2012	2,509	-1%	229,397	1%	4,399	1.2	-13%
2013	2,116	-16%	187,779	-18%	3,601	1.1	-8%
2014	1,961	-7%	174,427	-7%	3,345	1.0	-11%
2015	2,653	35%	237,571	36%	4,556	1.3	29%
2016	2,039	-23%	178,645	-25%	3,426	0.9	-28%
2017	1,554	-24%	135,711	-24%	2,603	0.6	-33%
2018	1,661	7%	145,174	7%	2,784	0.6	-9%
2019	1,227	-26%	113,443	-22%	2,176	0.6	9%
2020	1,316	7%	113,095	0%	2,169	0.6	0%
2021	875		74,788		2,021		

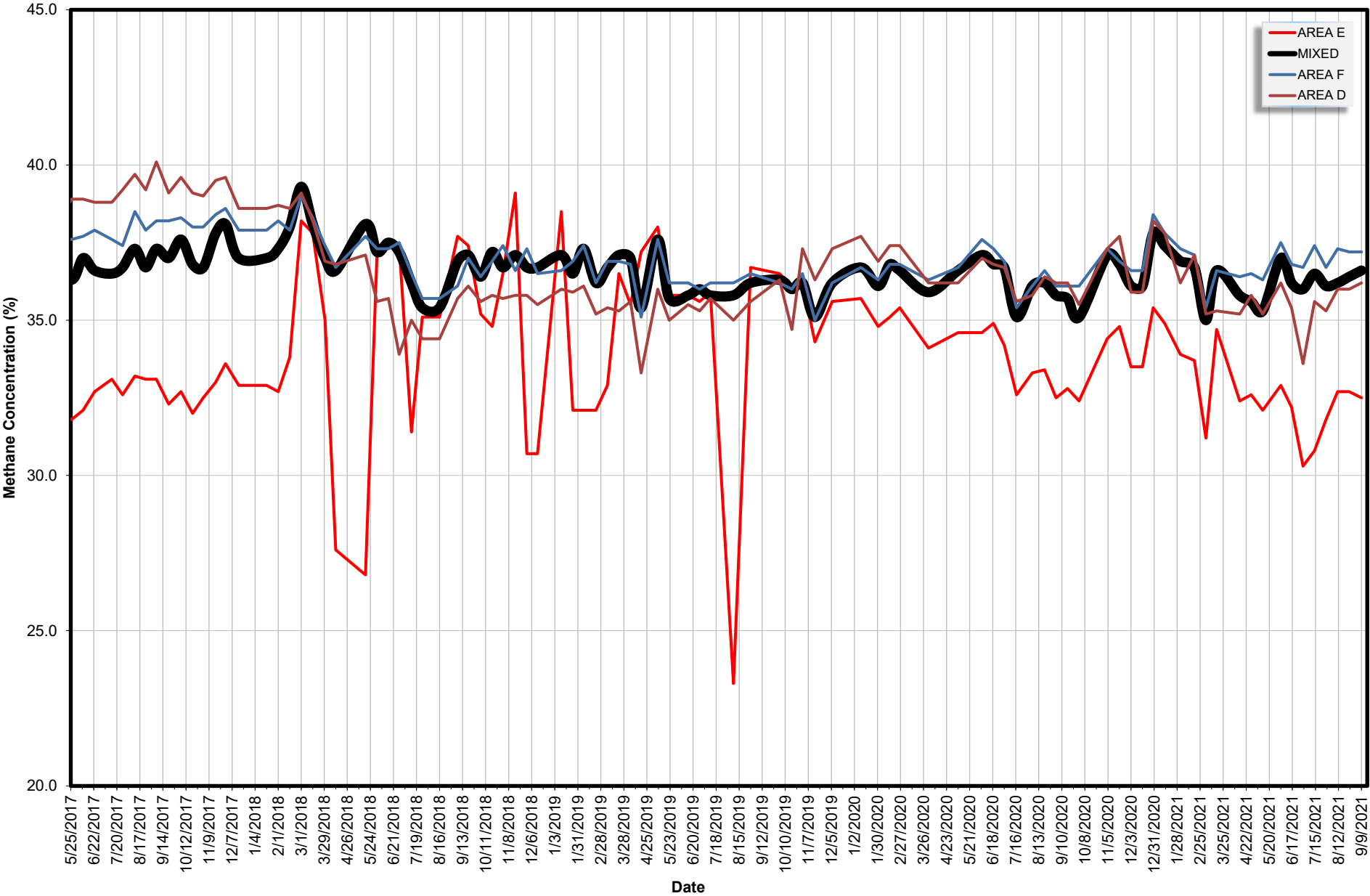
**Thermal Treatment Unit  
Operation Summary  
2006 - 2021**

<b>EXTRACTION SYSTEM (2021)</b>						
<b>Location</b>	<b>Last Instantaneous Methane Reading (%)</b>	<b>Last Instantaneous Flow Rate Reading (scfm)</b>	<b>Current Methane Removal Rate (lbs/day)</b>	<b>2021 % Operation</b>	<b>2021 Methane Removed (Lbs)</b>	<b>% Contribution of Each Extraction Source</b>
<b>Area E</b>						
EP-36	32.5	25.0	479.2	3%	16515.0	23%
<b>Area F</b>						
EW-31	30.3	1.0	17.9	3%	791.8	1%
EW-32	37.8	20.0	445.9	3%	14,720	20%
EW-33	38.9	19.6	449.7	3%	14,745	20%
EW-34	38.0	24.0	537.9	3%	17,750	25%
VF-3	42.2	3.0	74.7	3%	2964.5	4%
VF-4	48.3	1.0	28.5	3%	1580.7	2%
VF-5	47.4	1.0	28.0	2%	1277.3	2%
<b>Area D</b>						
VD-2	37.8	1.0	22.3	3%	925.4	1%
VD-3	36.7	1.0	21.6	3%	841.8	1%
<b>MIXED</b>						
MIXED	36.6	96.0	2072.5	3%	70530.8	100%

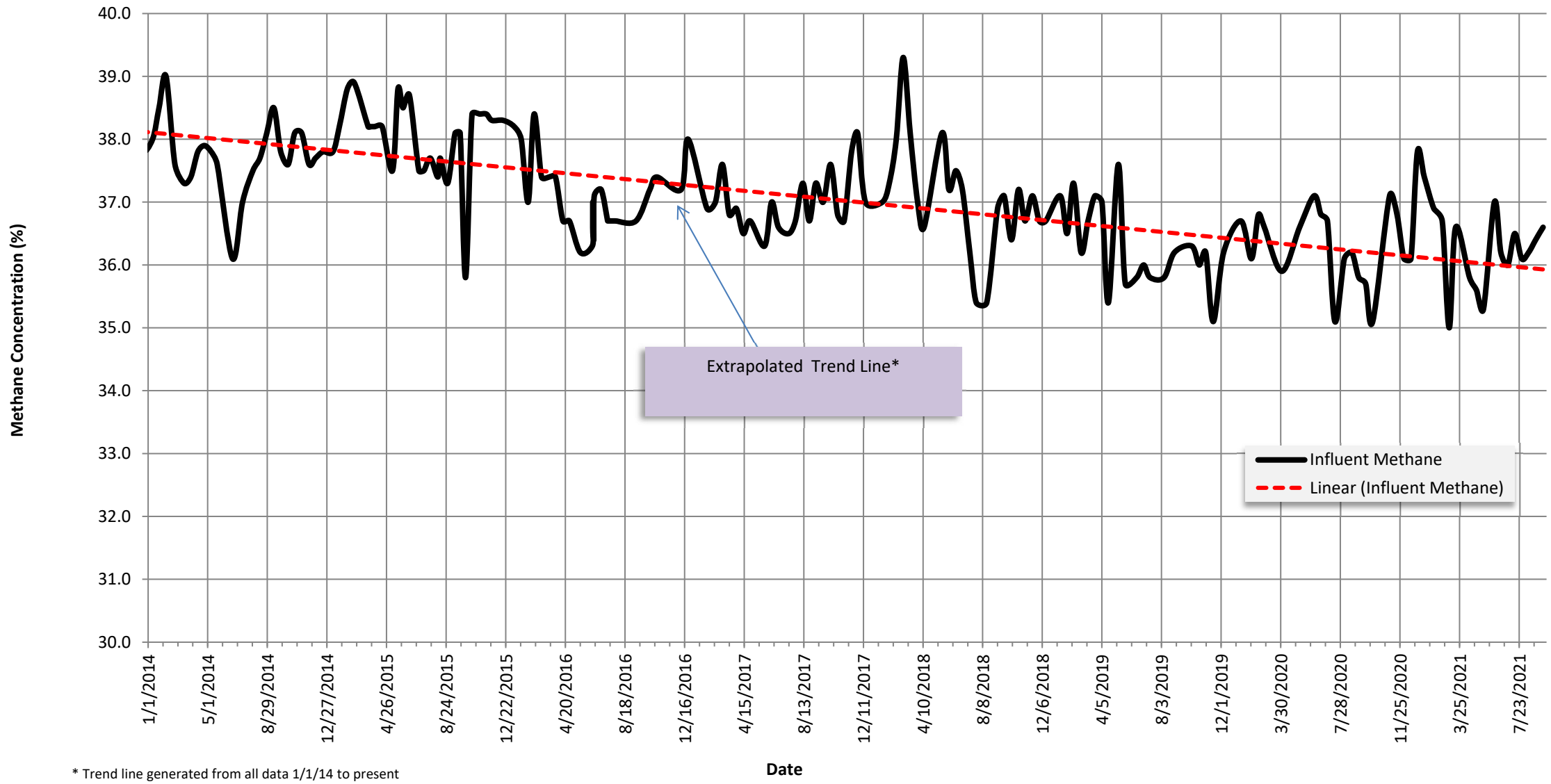
# Methane Concentration vs. Time OU2 Landfill Extraction Sources 1/1/2011 to present



Methane Concentration vs. Time  
OU2 Landfill Extraction Sources  
1/1/2011 to present



Methane Concentration Time Series Plot  
Thermal Treatment Unit Influent  
01/01/2014 to present



\* Trend line generated from all data 1/1/14 to present