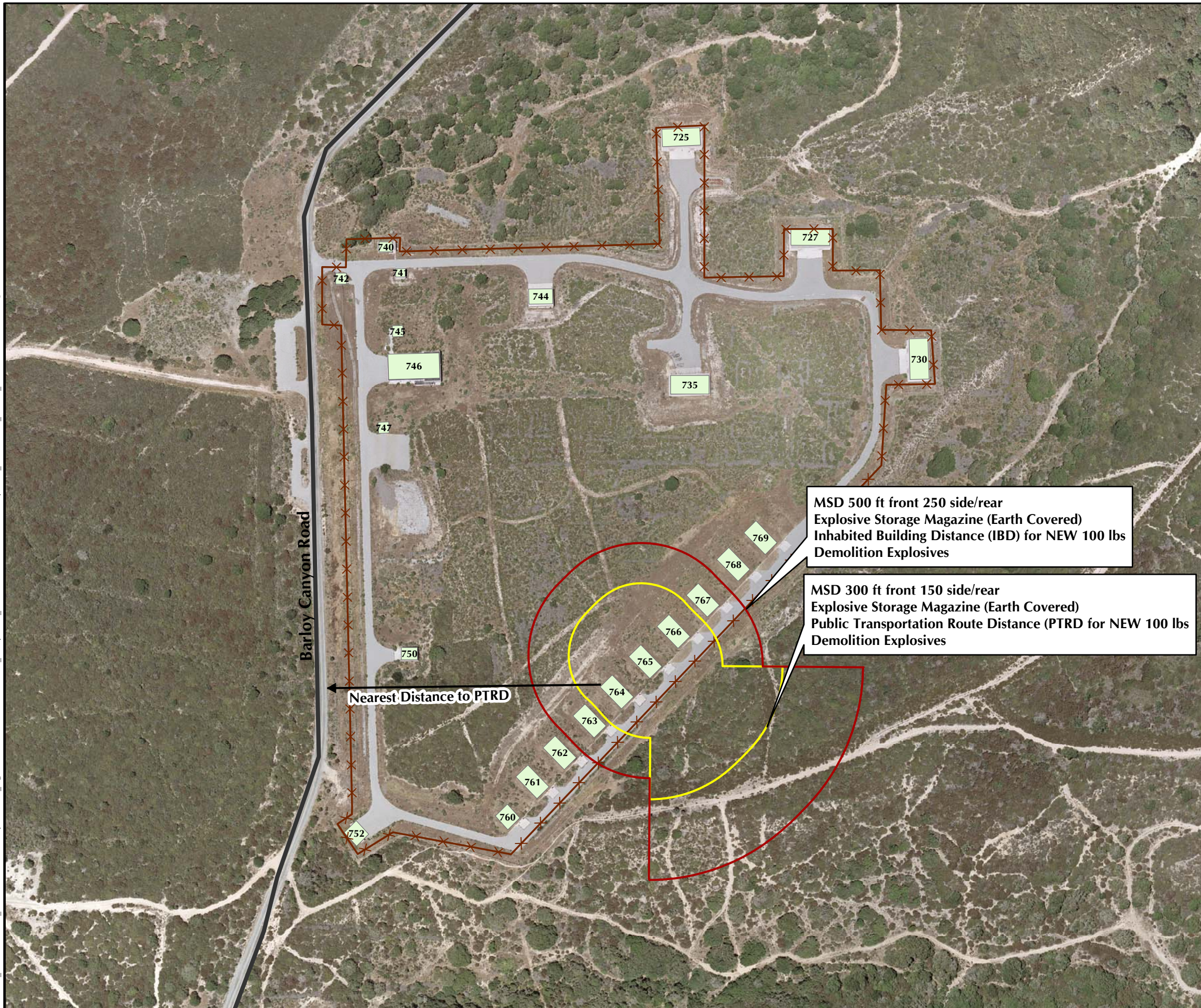


K:\001_EMA\03609595_FIORD\GIS\Projects\ESRA_Figures\Week062907\EastGarrison_SafetyBuffer_Bunkers\SSWP_Addendum\SafetyBuffer_EastGarrison_Bld765_SSWP.mxd - 1/15/2008 @ 4:10:12 PM

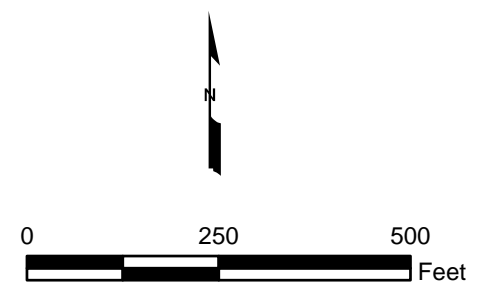


- Legend**
- Building
 - Major Road
 - Fencing
 - Public Traffic Route
 - Inhabited Buildings

MSD 500 ft front 250 side/rear
Explosive Storage Magazine (Earth Covered)
Inhabited Building Distance (IBD) for NEW 100 lbs
Demolition Explosives

MSD 300 ft front 150 side/rear
Explosive Storage Magazine (Earth Covered)
Public Transportation Route Distance (PTRD for NEW 100 lbs
Demolition Explosives

← Nearest Distance to PTRD



**Explosive Storage Location
(Bldg 765)
Minimum Separation Distances**

FORA ESCA RP
Monterey County, California