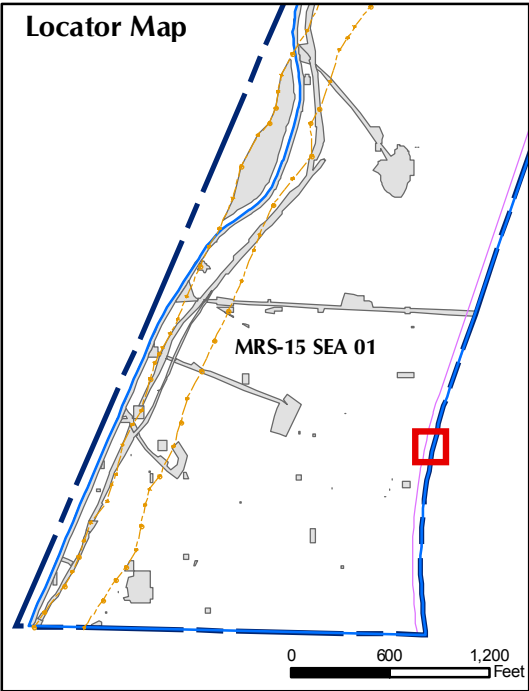


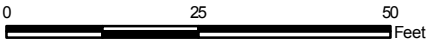
**Legend**

- SCA Point
- ▬ Seaside MRA Boundary
- ▬ MRS Boundary
- - - Roadway Alignment
- ▭ Hillside West of General Jim Moore Boulevard Investigation Area
- ▭ SCA Polygon Boundary (Investigation Areas)
- ▭ Area within Roadway Alignment
- ▭ Utility Corridor

**Locator Map**



State Plane California IV, NAD 1983  
(U.S. Survey Foot)



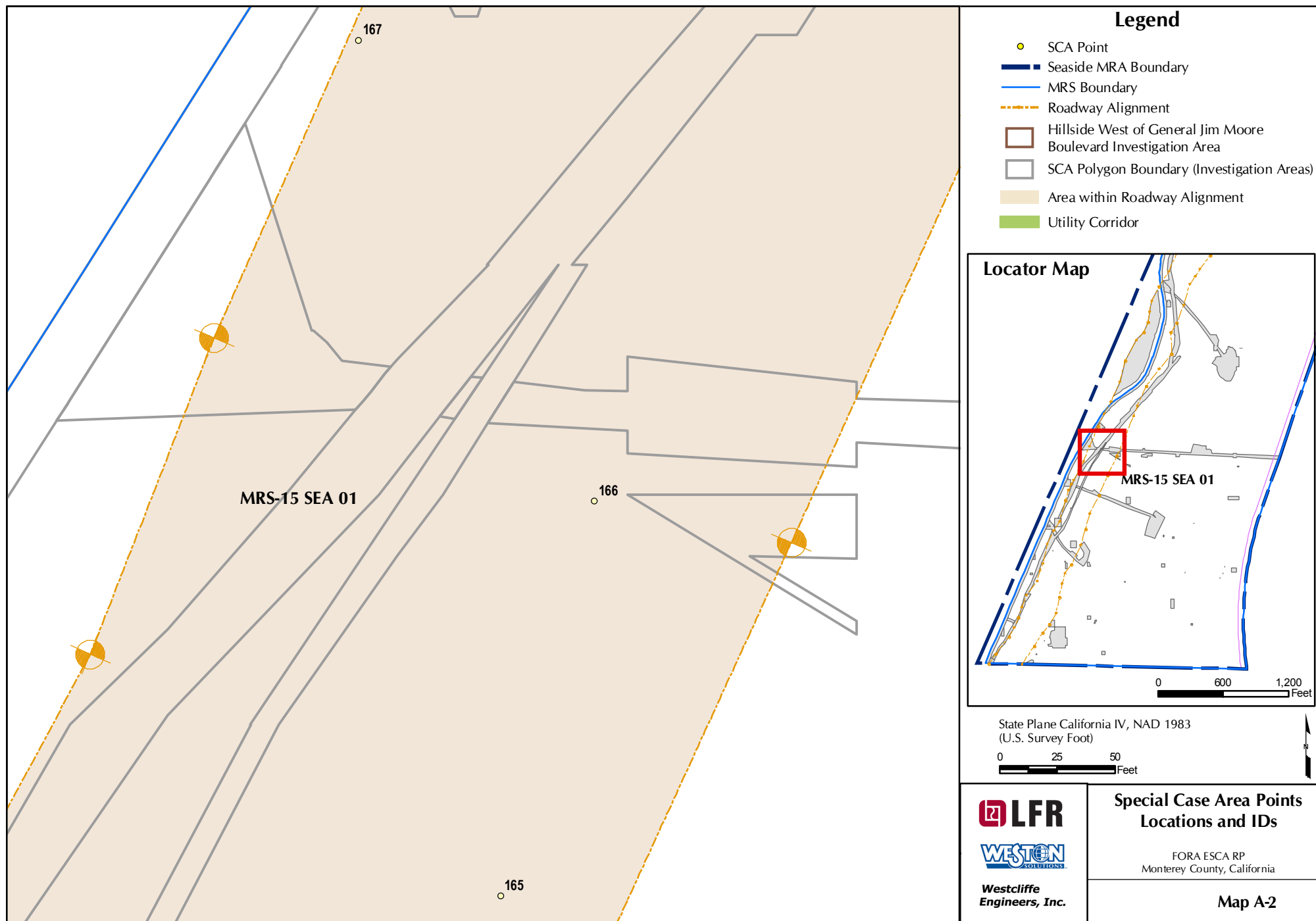
Westcliffe  
Engineers, Inc.

**Special Case Area Points  
Locations and IDs**

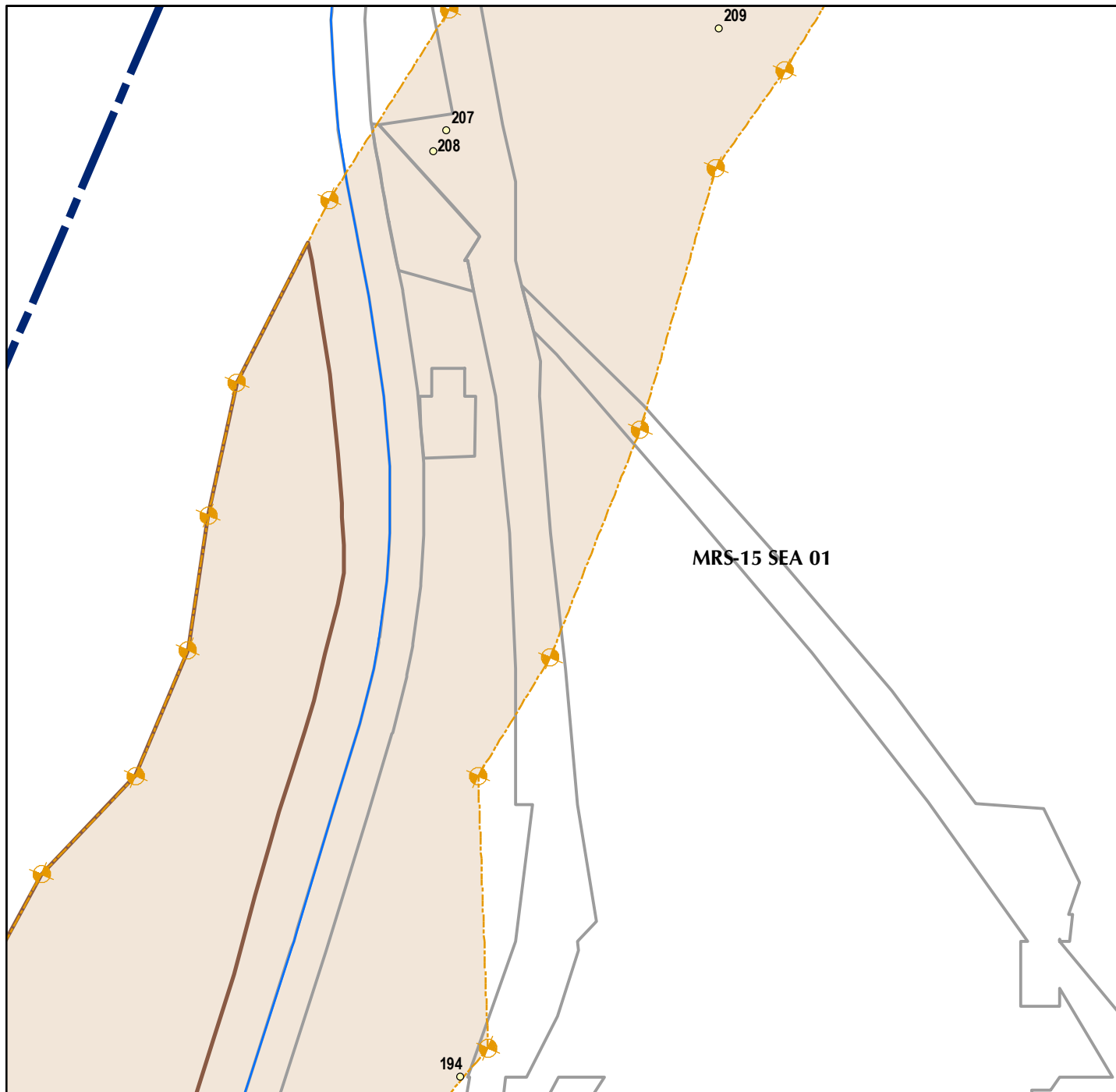
FORA ESCA RP  
Monterey County, California

Map A-1





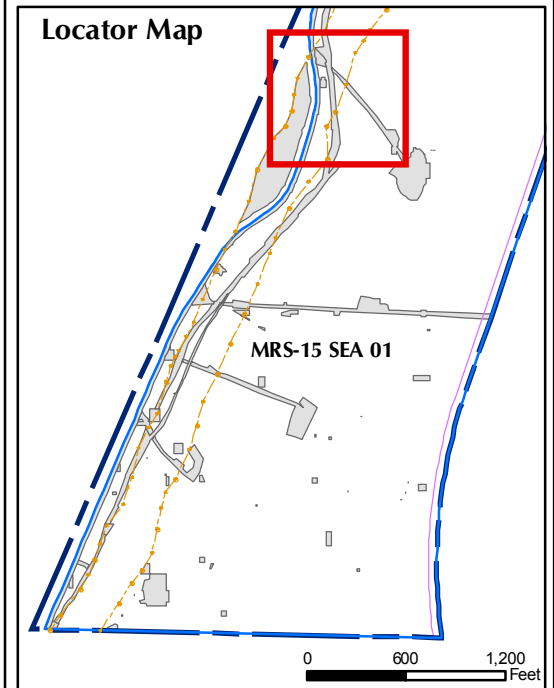




## Legend

- SCA Point
- Seaside MRA Boundary
- MRS Boundary
- - - Roadway Alignment
- Hillside West of General Jim Moore Boulevard Investigation Area
- SCA Polygon Boundary (Investigation Areas)
- Area within Roadway Alignment
- Utility Corridor

## Locator Map



State Plane California IV, NAD 1983  
(U.S. Survey Foot)

0 25 50  
Feet



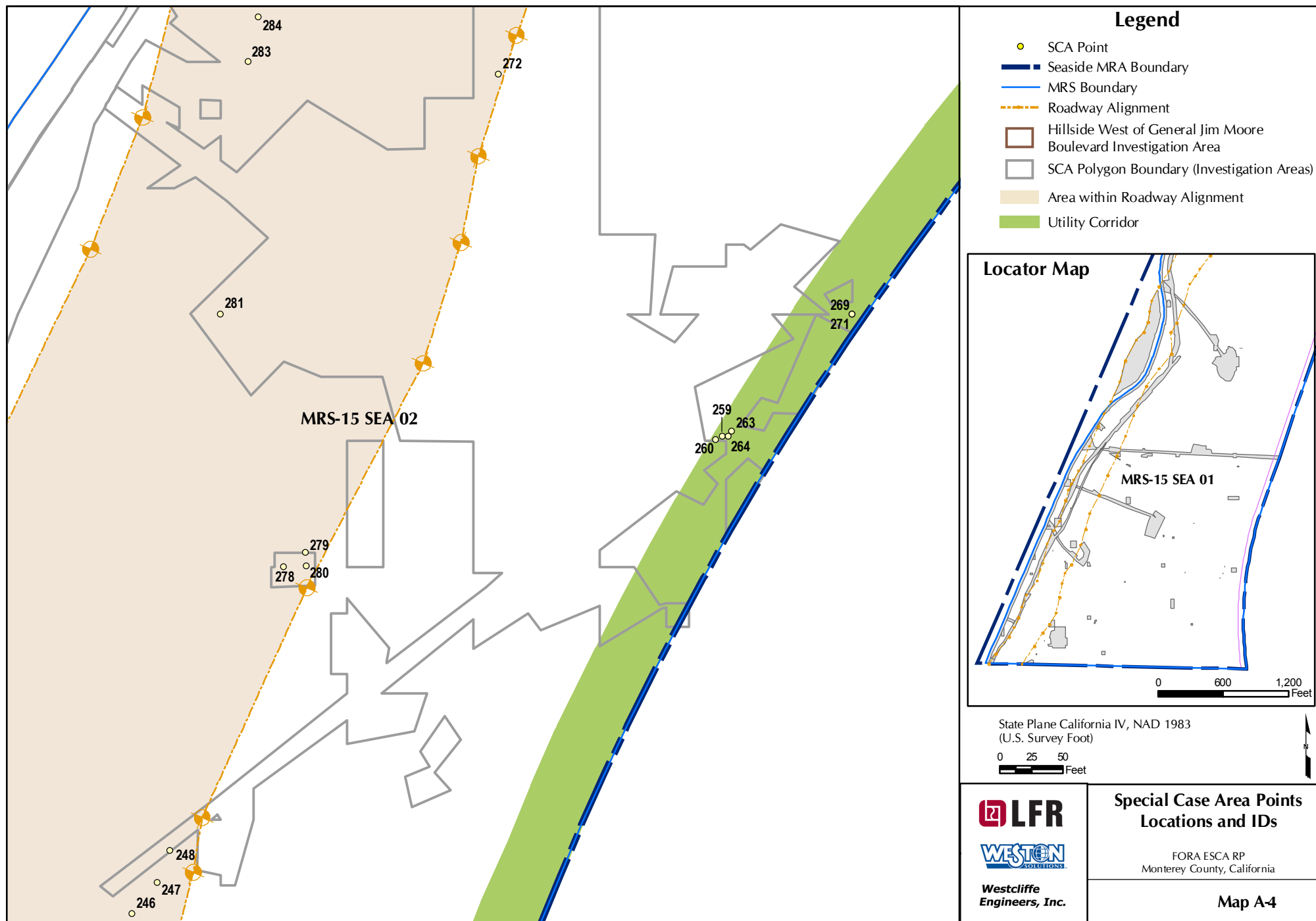
**Westcliffe  
Engineers, Inc.**

## Special Case Area Points Locations and IDs

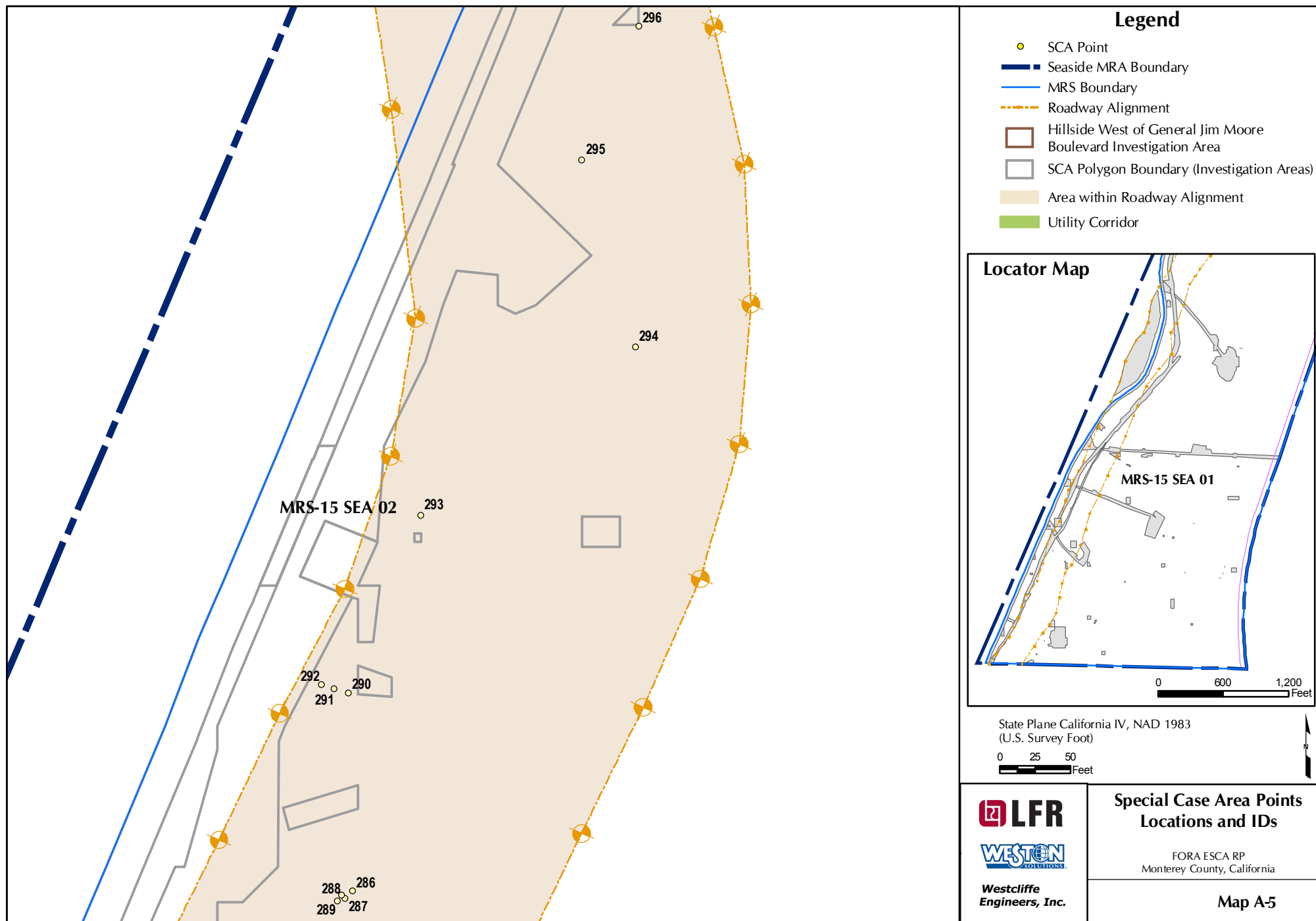
FORA ESCA RP  
Monterey County, California

**Map A-3**

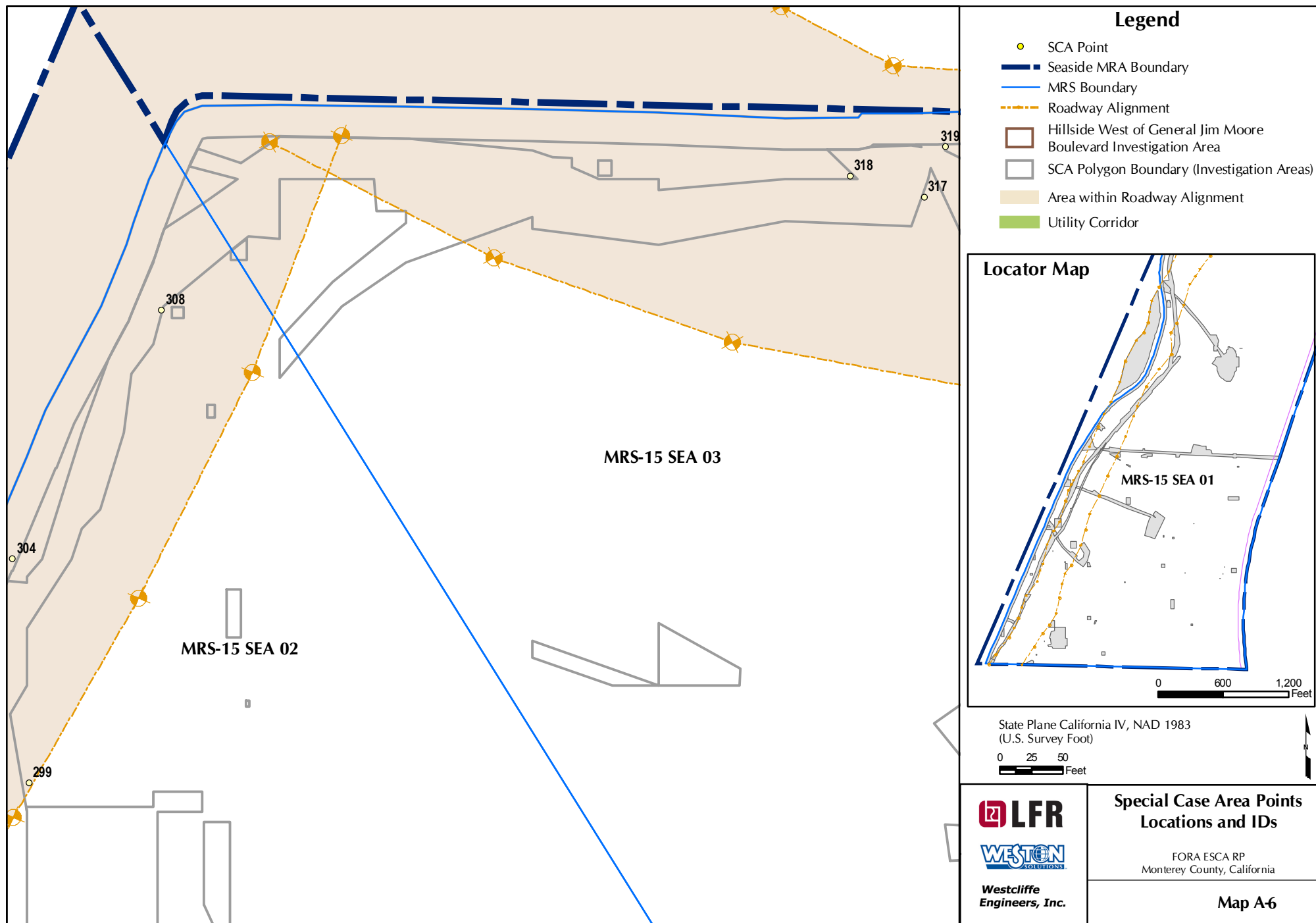




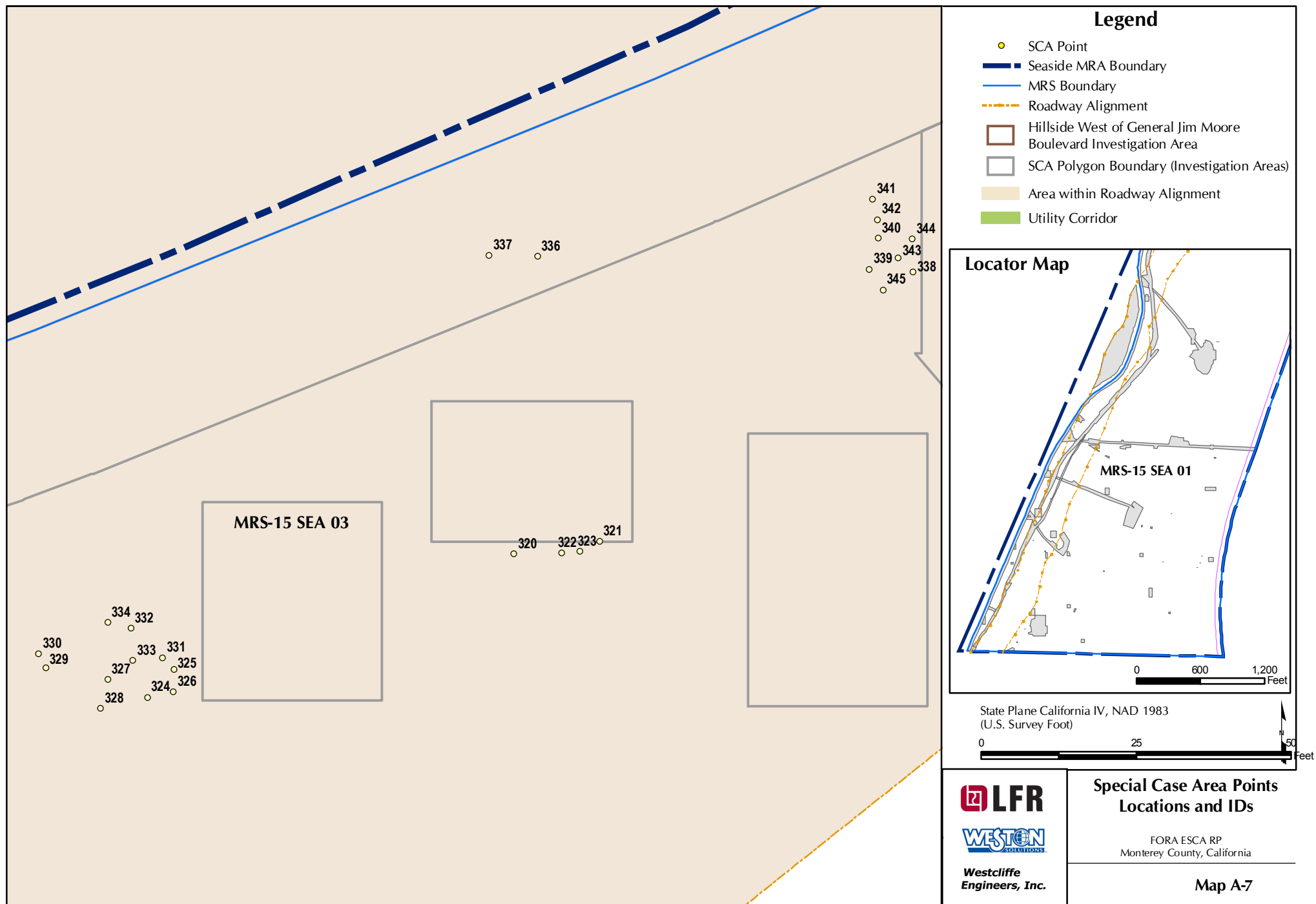




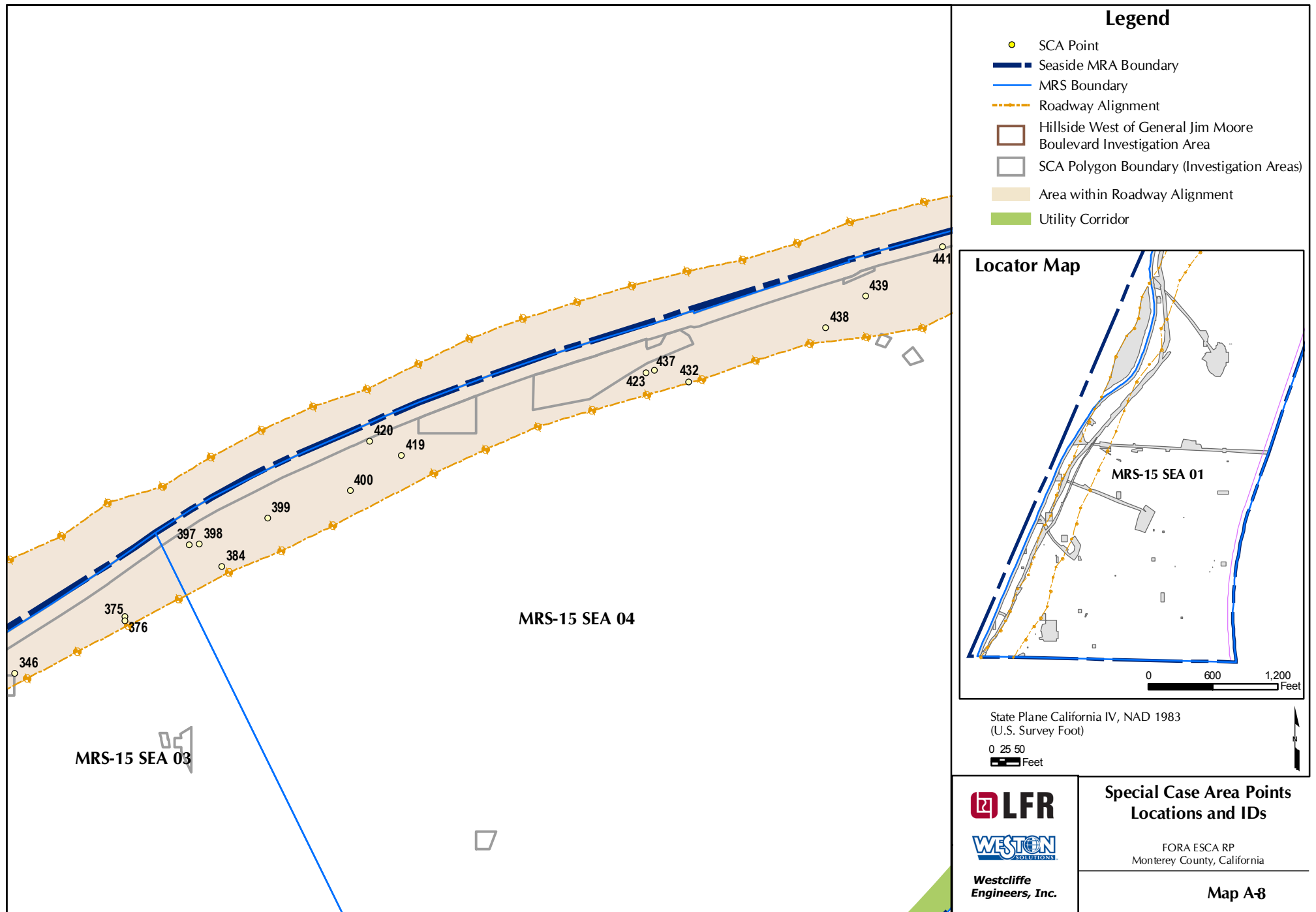




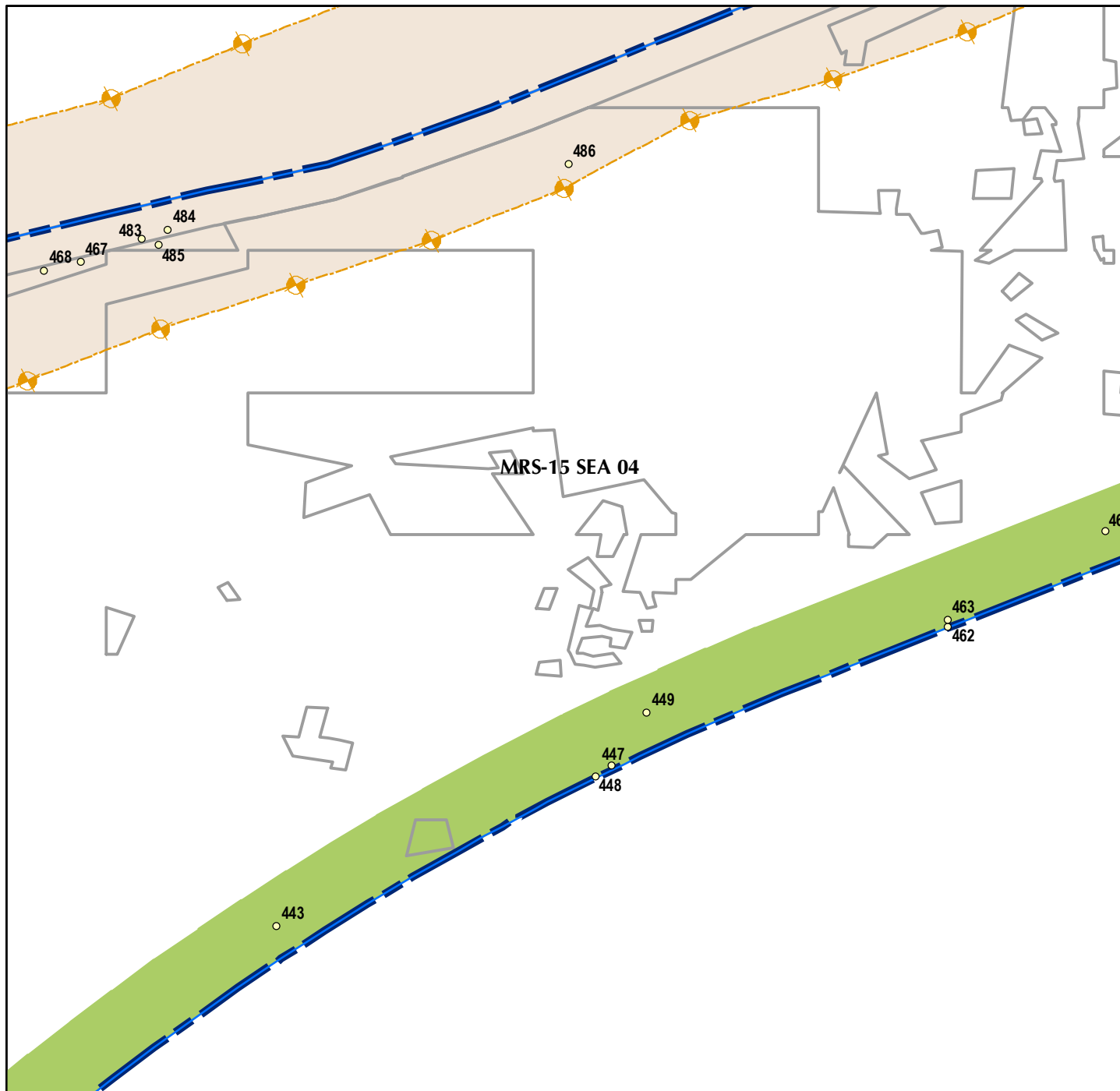








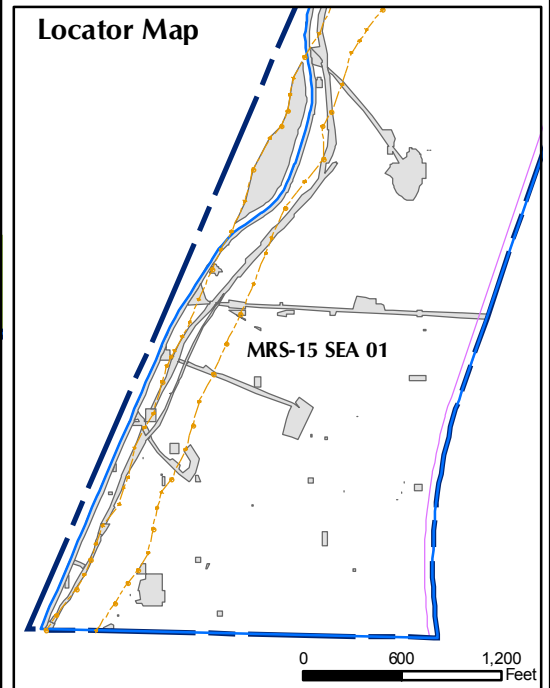




## Legend

- SCA Point
- Seaside MRA Boundary
- MRS Boundary
- - - Roadway Alignment
- Hillside West of General Jim Moore Boulevard Investigation Area
- SCA Polygon Boundary (Investigation Areas)
- Area within Roadway Alignment
- Utility Corridor

## Locator Map



State Plane California IV, NAD 1983  
(U.S. Survey Foot)

0 25 50  
Feet



Westcliffe  
Engineers, Inc.

## Special Case Area Points Locations and IDs

FORA ESCA RP  
Monterey County, California

Map A-9



