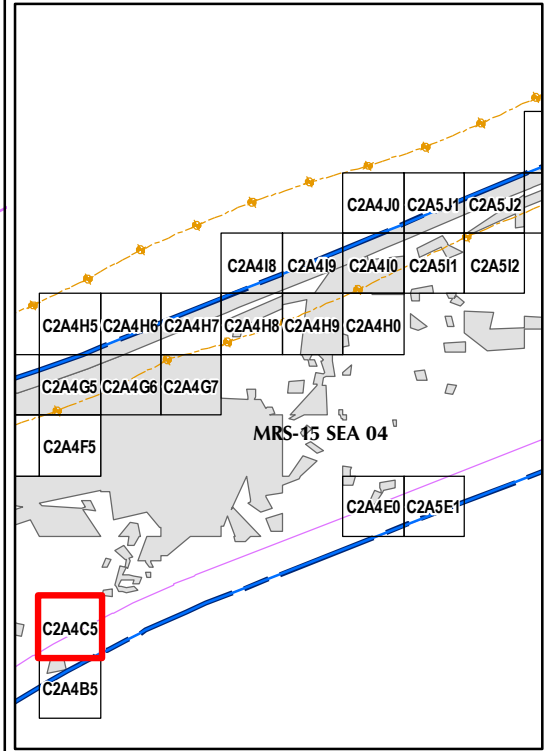
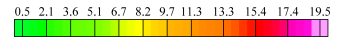


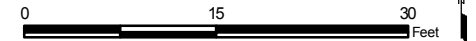
Legend

- Target Location
- Seaside MRA Boundary
- Roadway Alignment
- SCA Polygons (Investigation Areas)
- Utility Corridor
- MRS Boundary

Response (Stack)
mV

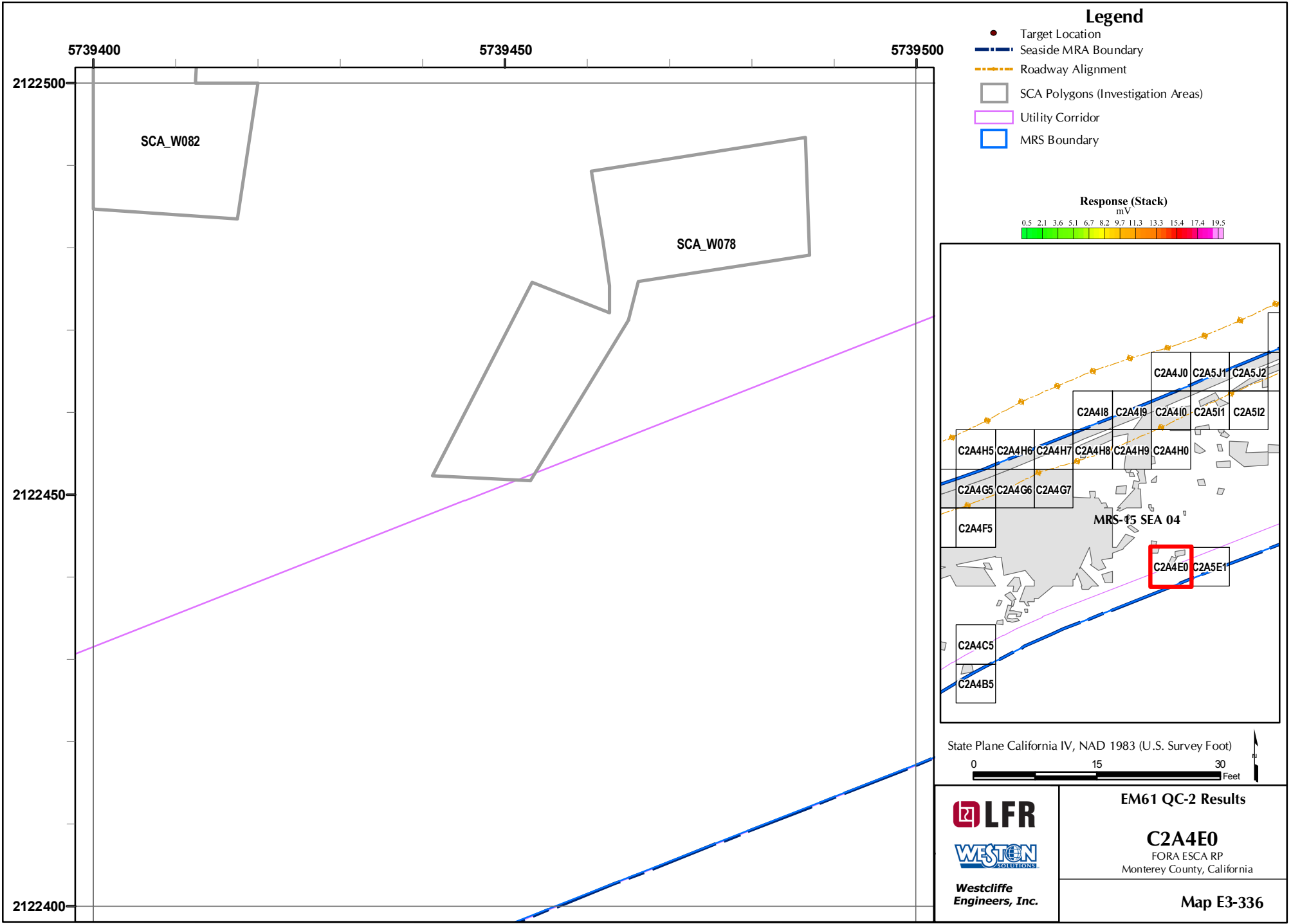


State Plane California IV, NAD 1983 (U.S. Survey Foot)



LFR
WESTON SOLUTIONS
Westcliffe
Engineers, Inc.

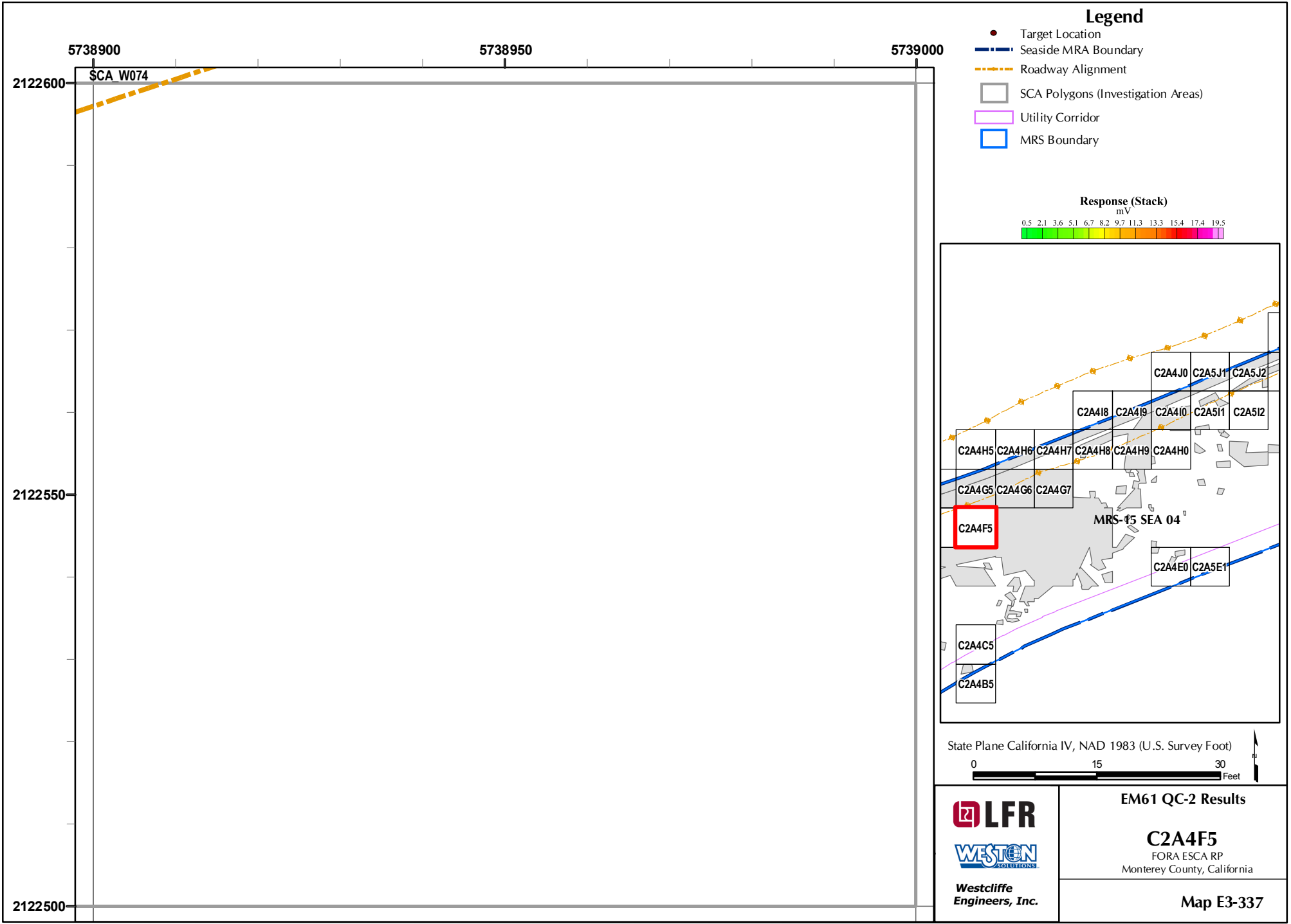
EM61 QC-2 Results
C2A4C5
FORA ESCA RP
Monterey County, California
Map E3-335

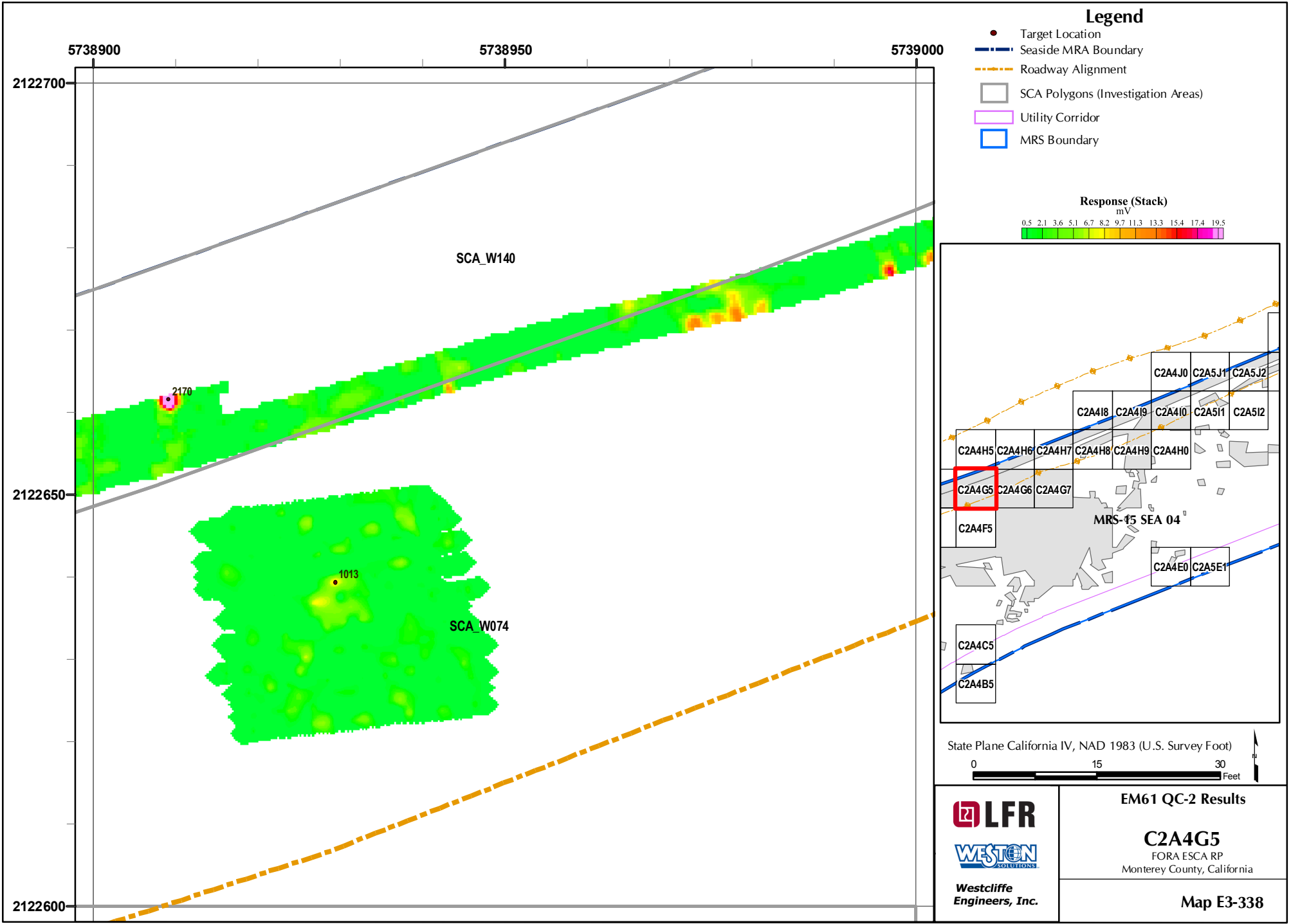


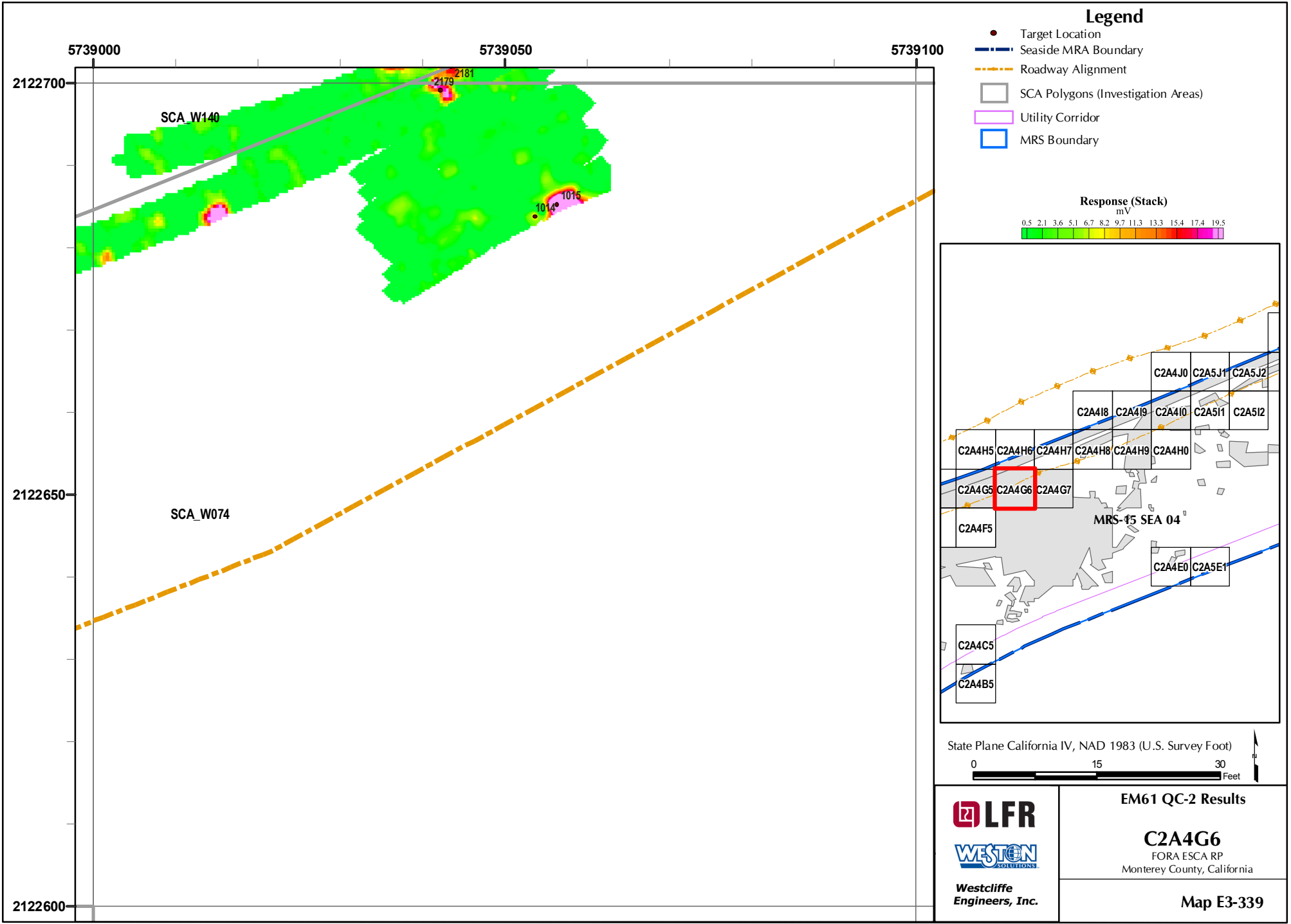
EM61 QC-2 Results

C2A4E0
FORA ESCA RP
Monterey County, California

Map E3-336



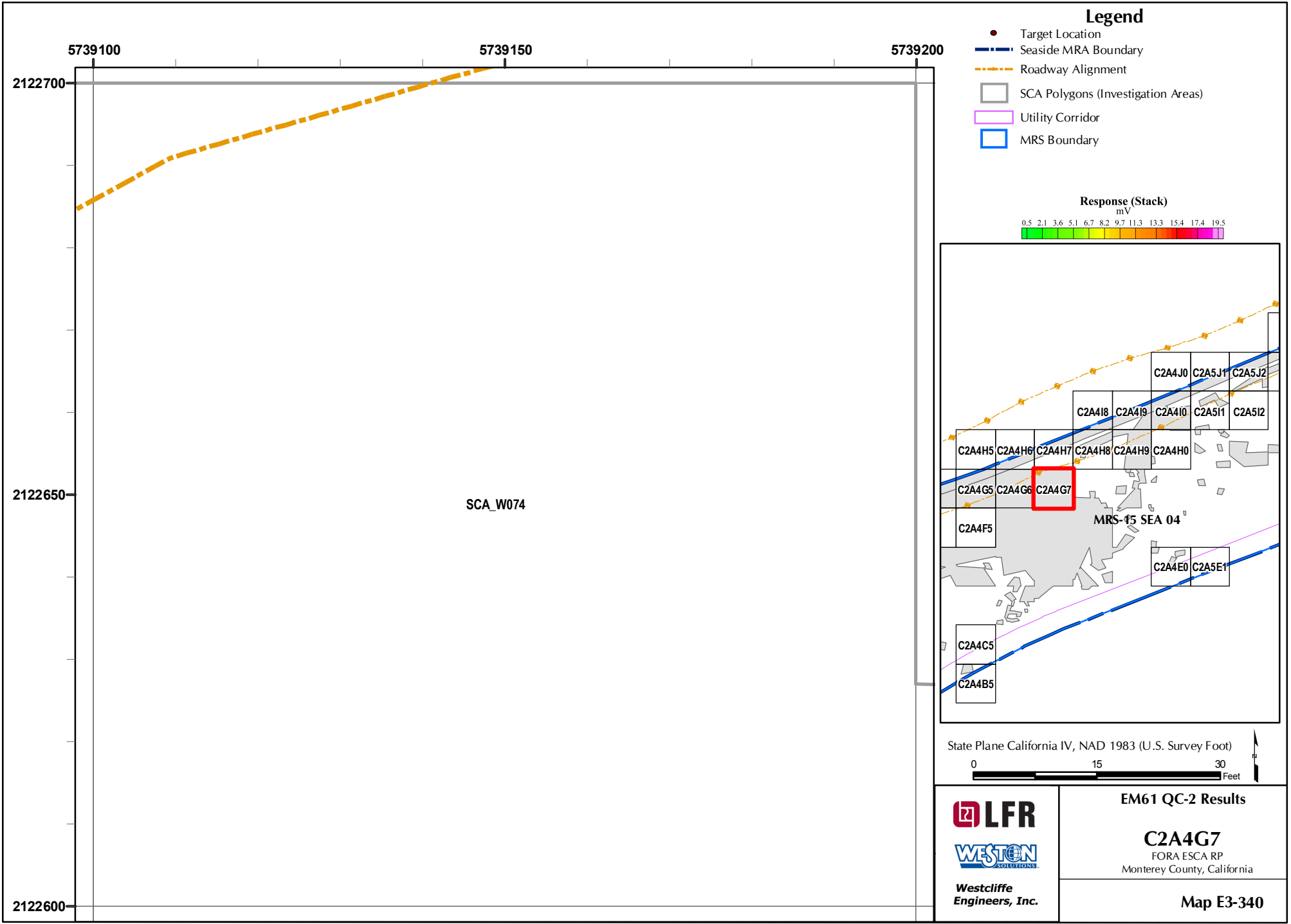


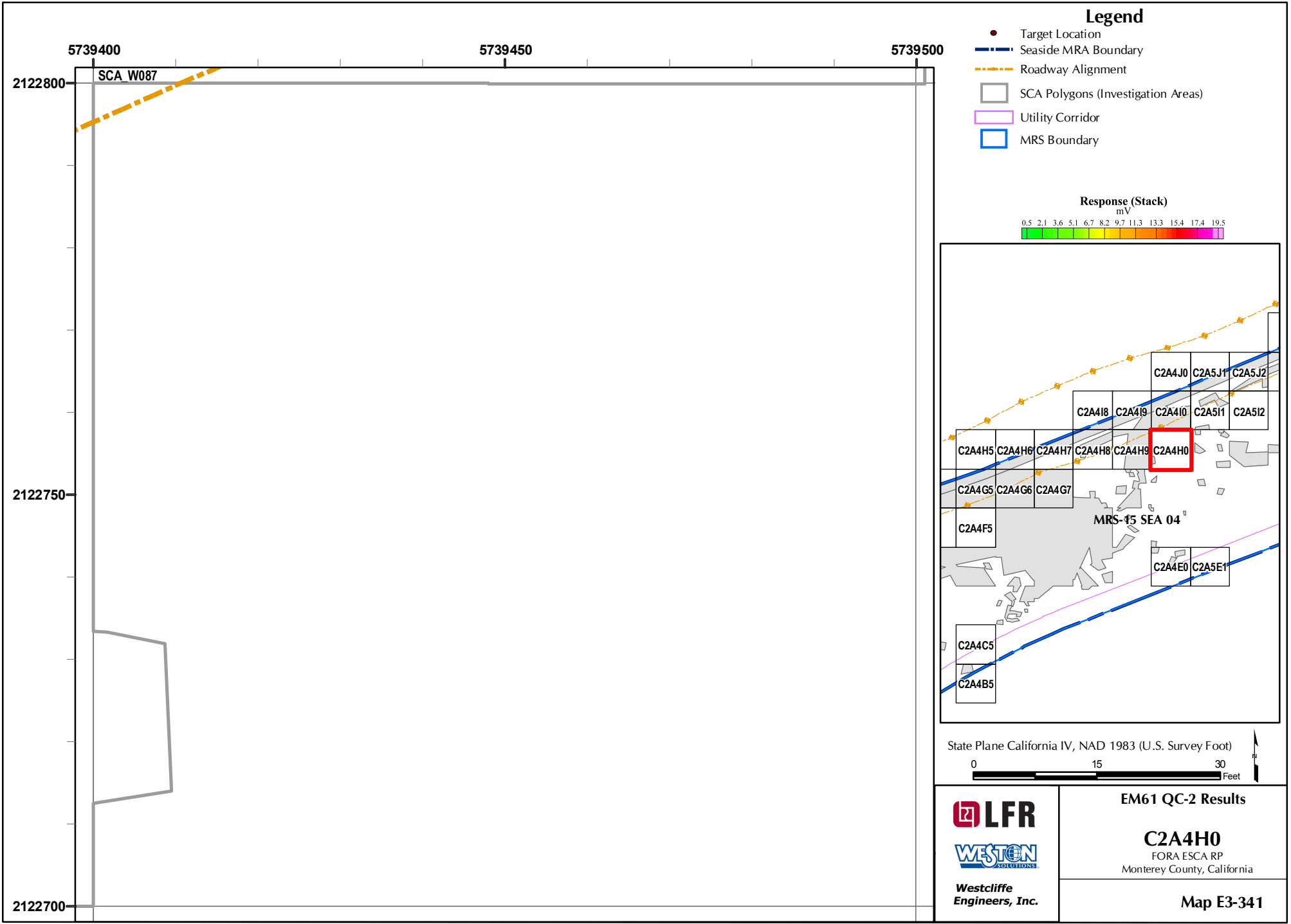


State Plane California IV, NAD 1983 (U.S. Survey Foot)

0 15 30 Feet

<p>LFR WESTON SOLUTIONS</p> <p>Westcliffe Engineers, Inc.</p>	<p>EM61 QC-2 Results</p>
	<p>C2A4G6 FORA ESCA RP Monterey County, California</p>
<p>Map E3-339</p>	

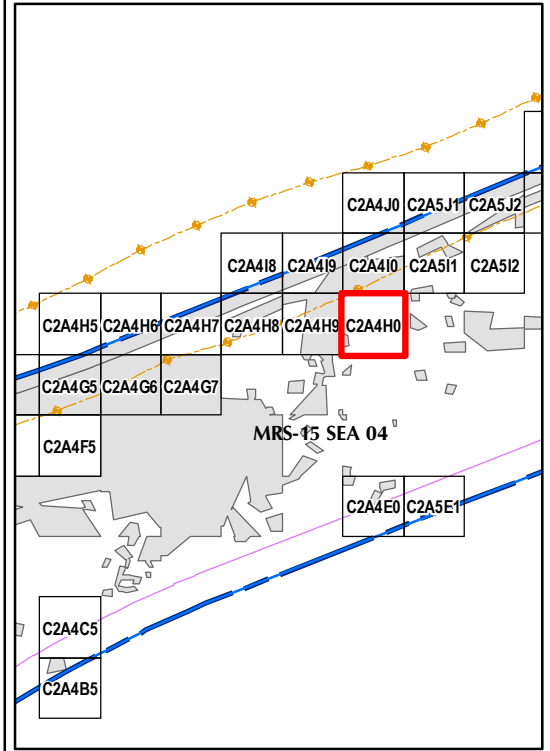
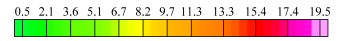




Legend

- Target Location
- Seaside MRA Boundary
- - - Roadway Alignment
- SCA Polygons (Investigation Areas)
- Utility Corridor
- MRS Boundary

Response (Stack)
mV



State Plane California IV, NAD 1983 (U.S. Survey Foot)

LFR

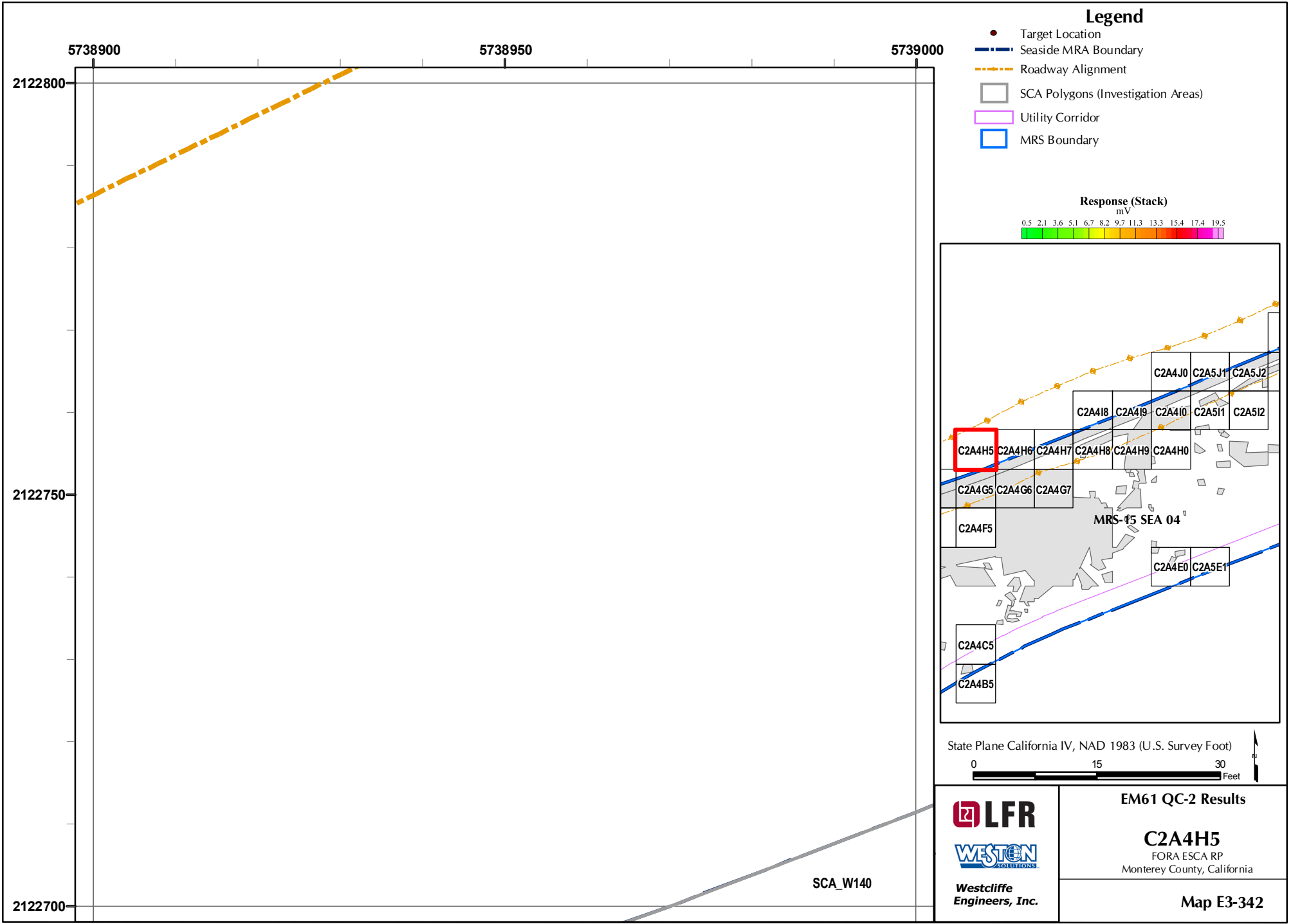
WESTON
SOLUTIONS

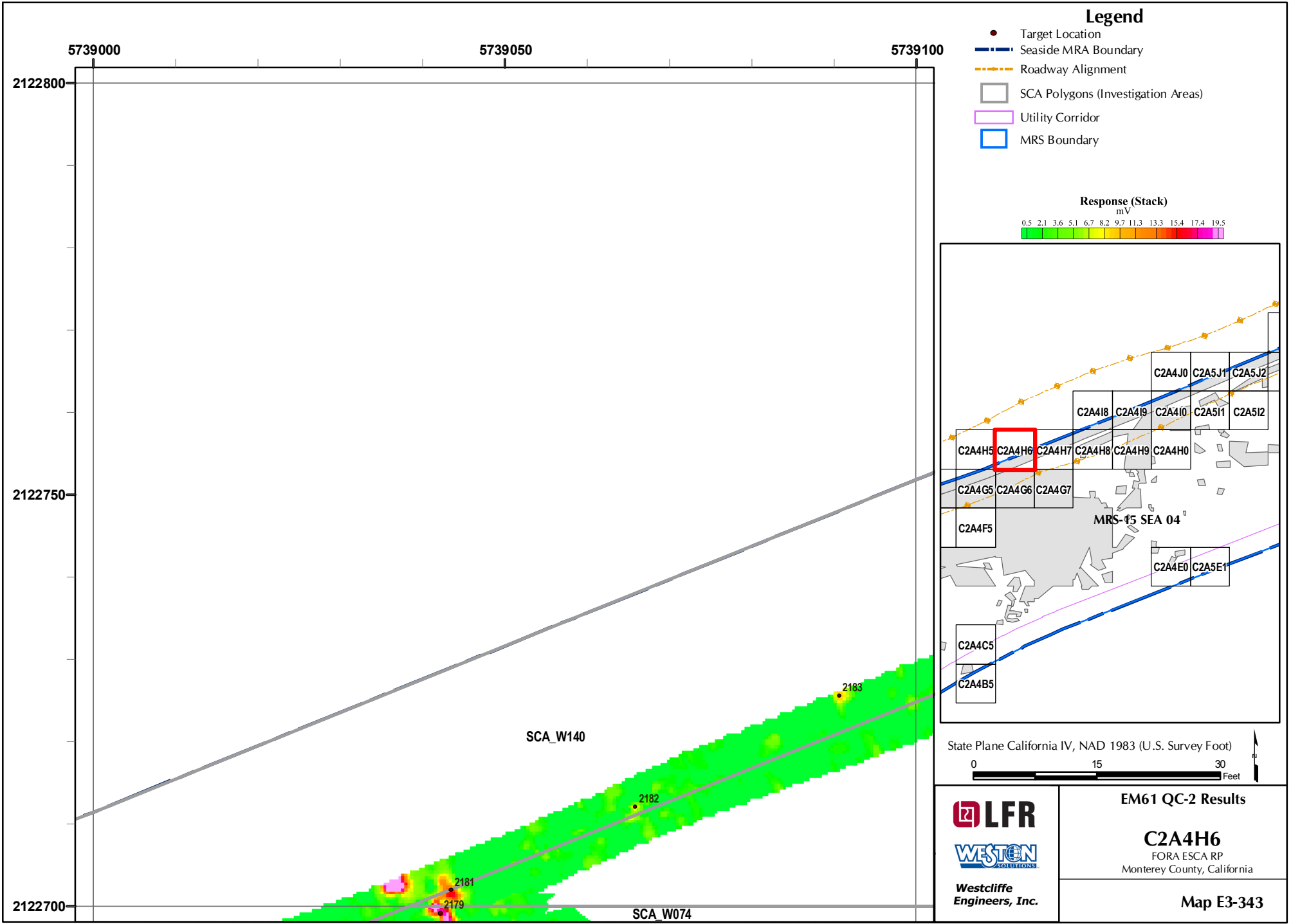
Westcliffe
Engineers, Inc.

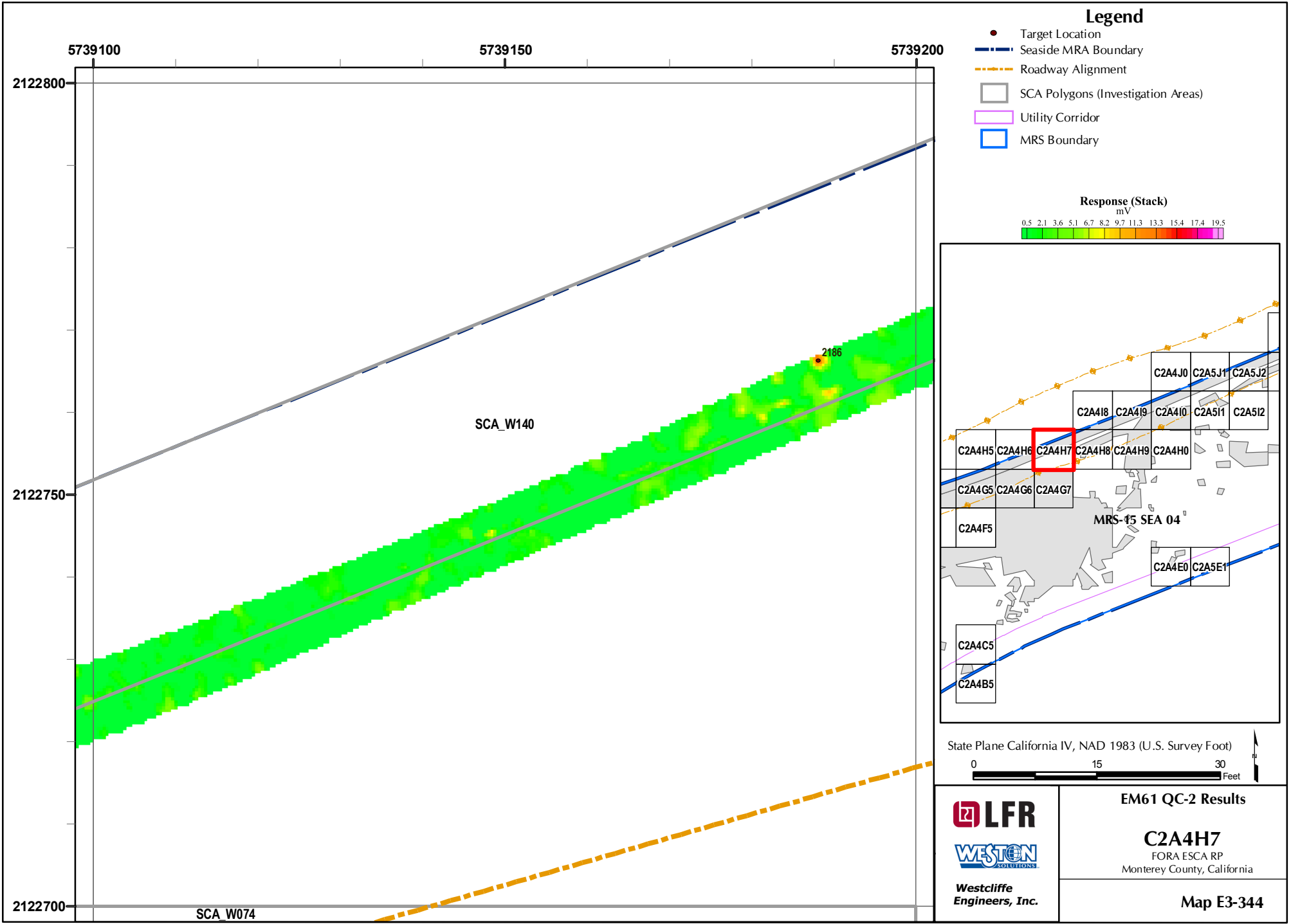
EM61 QC-2 Results

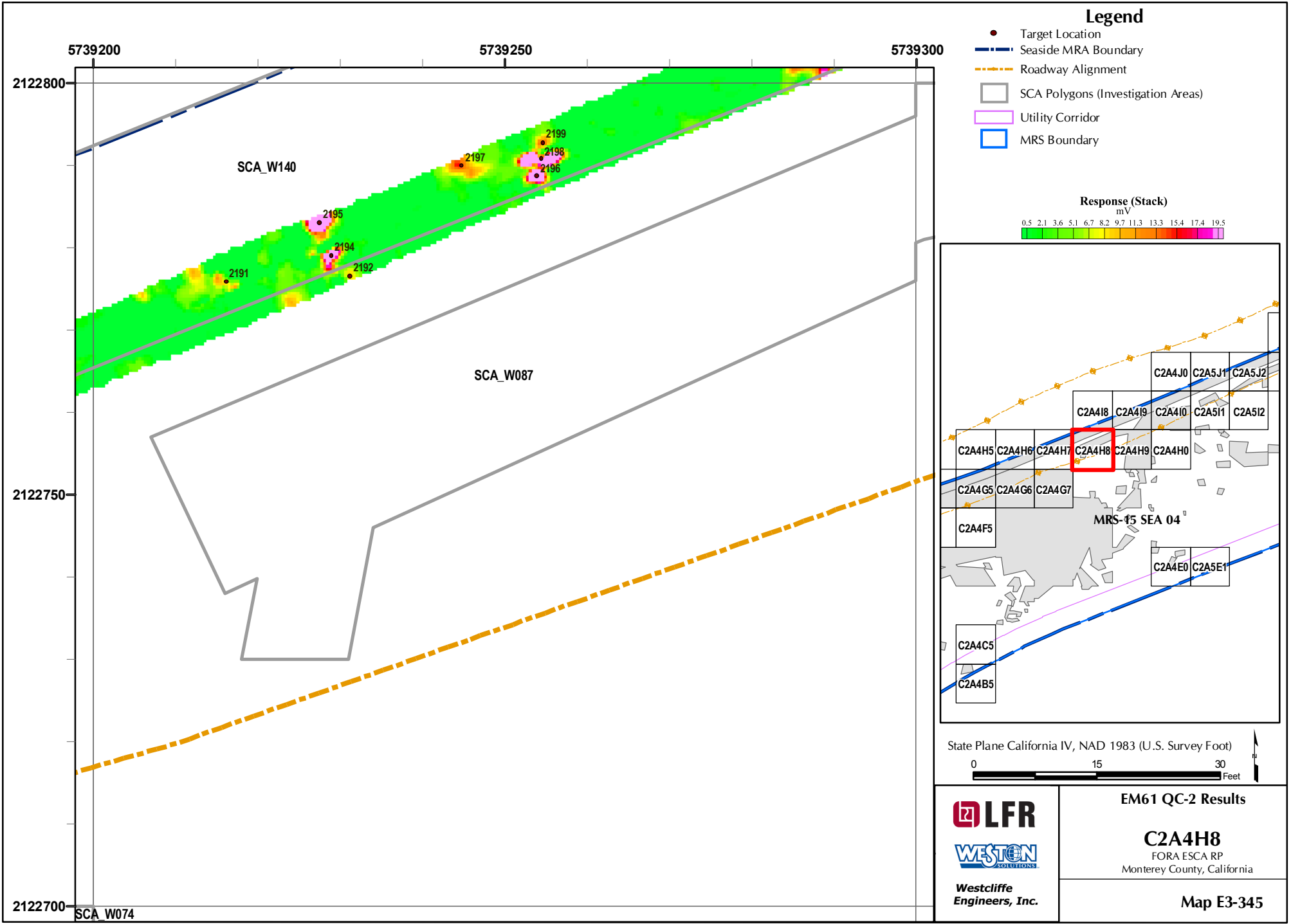
C2A4H0
FORA ESCA RP
Monterey County, California

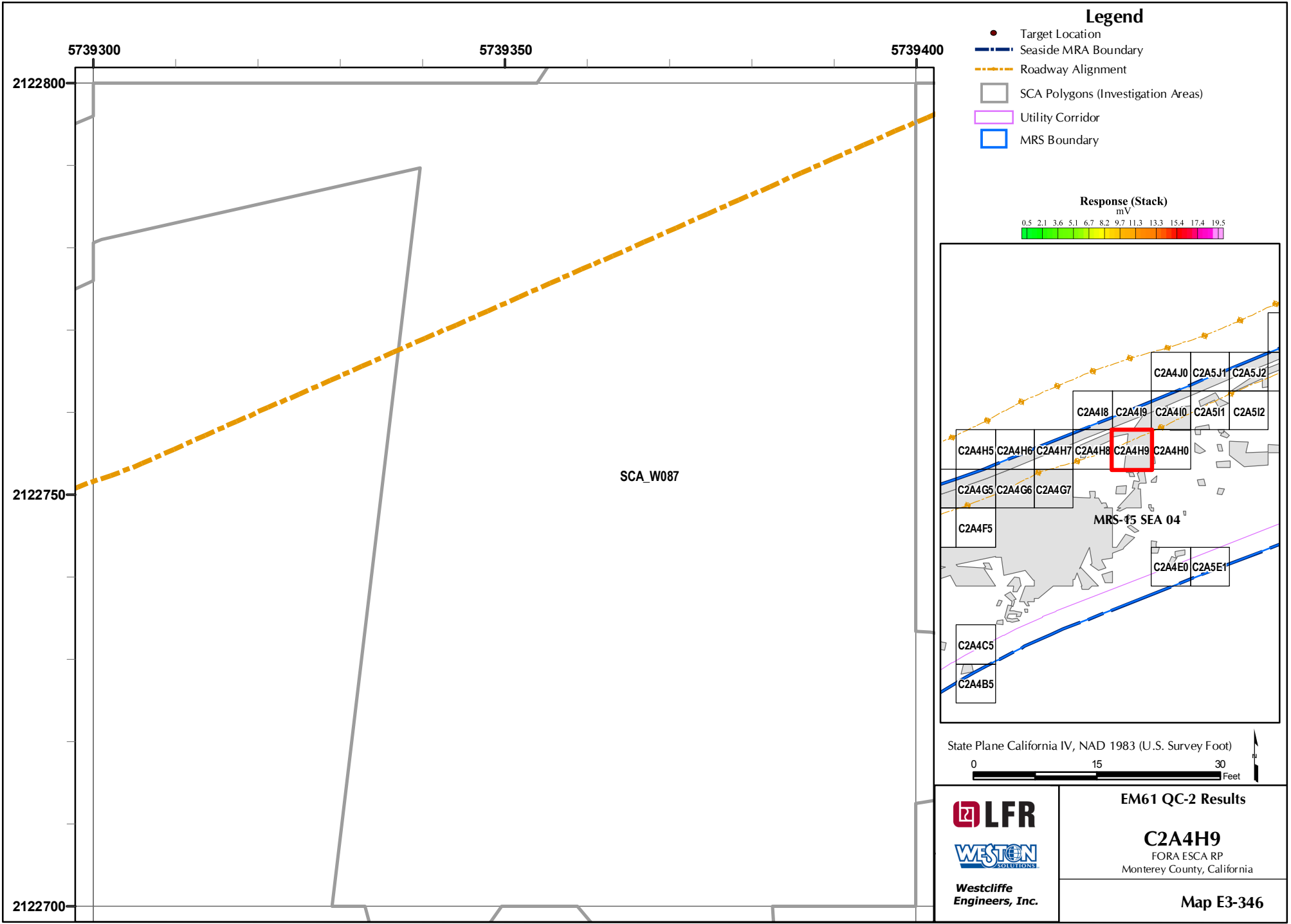
Map E3-341

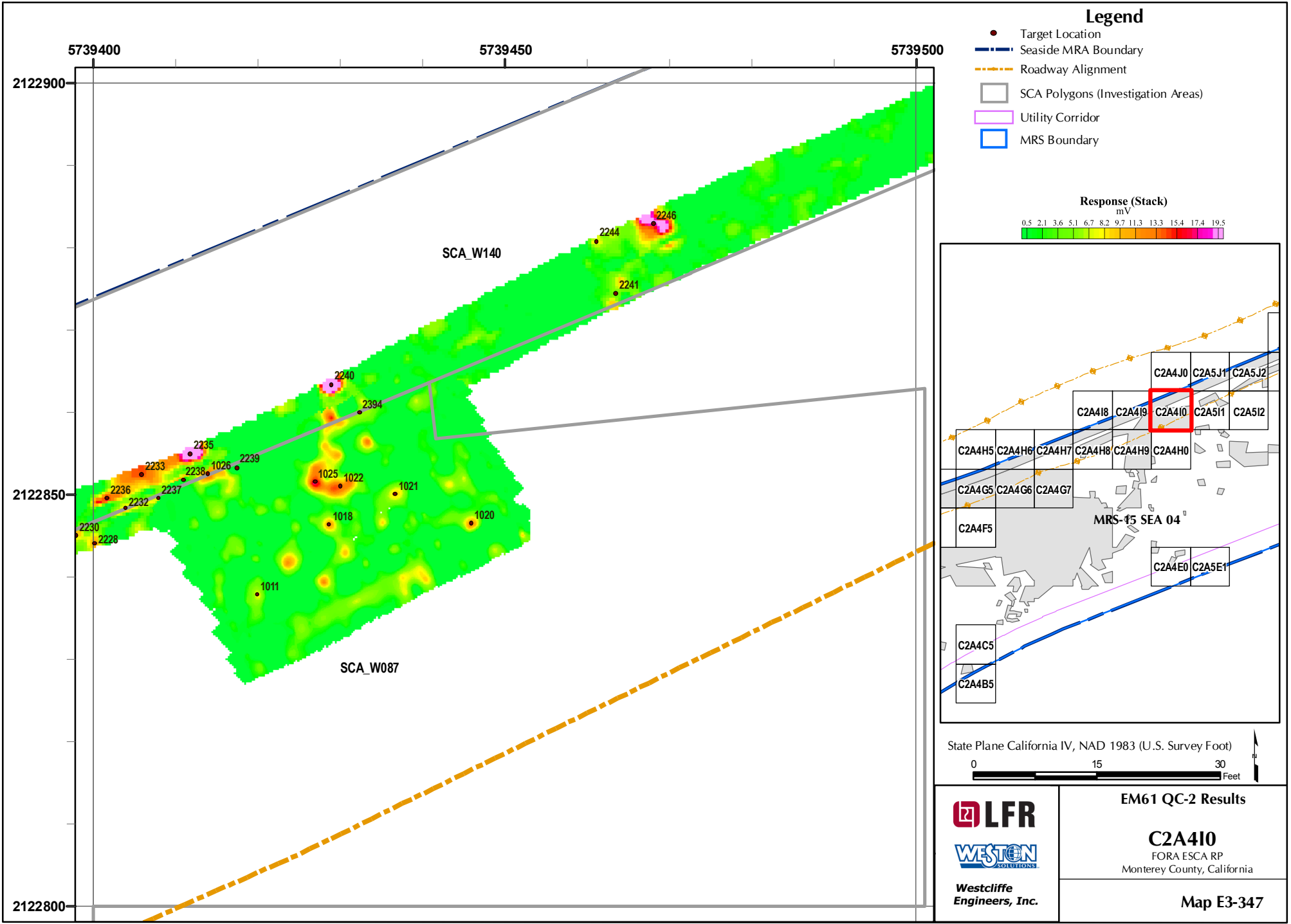








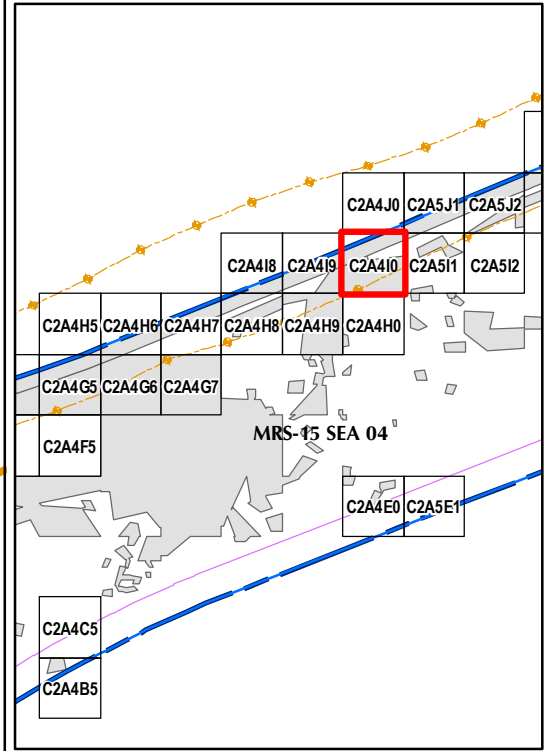
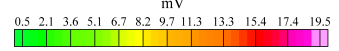




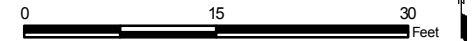
Legend

- Target Location
- Seaside MRA Boundary
- - - Roadway Alignment
- SCA Polygons (Investigation Areas)
- Utility Corridor
- MRS Boundary

Response (Stack)



State Plane California IV, NAD 1983 (U.S. Survey Foot)

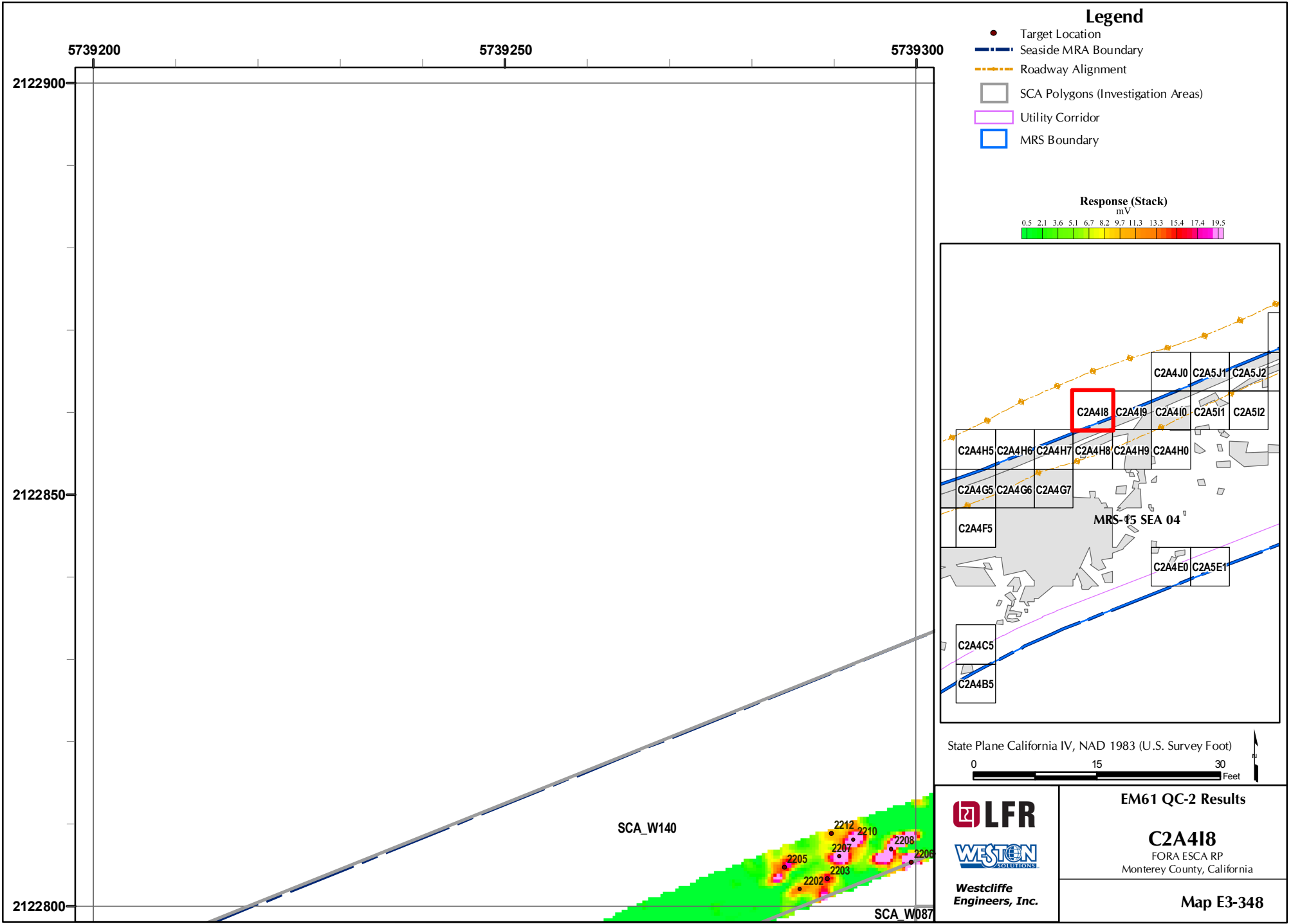


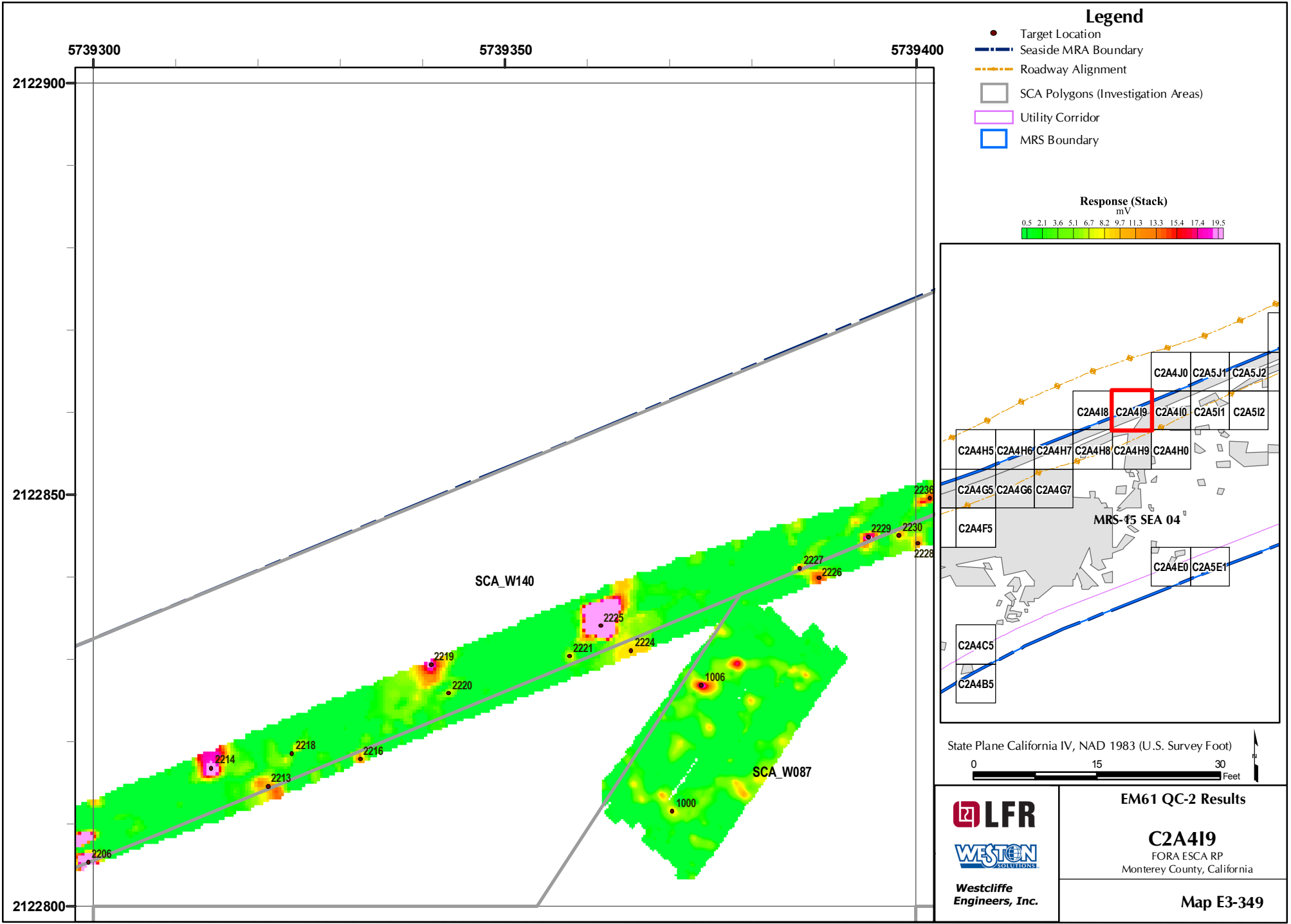
LFR
WESTON
 SOLUTIONS
 Westcliffe
 Engineers, Inc.

EM61 QC-2 Results

C2A410
 FORA ESCA RP
 Monterey County, California

Map E3-347

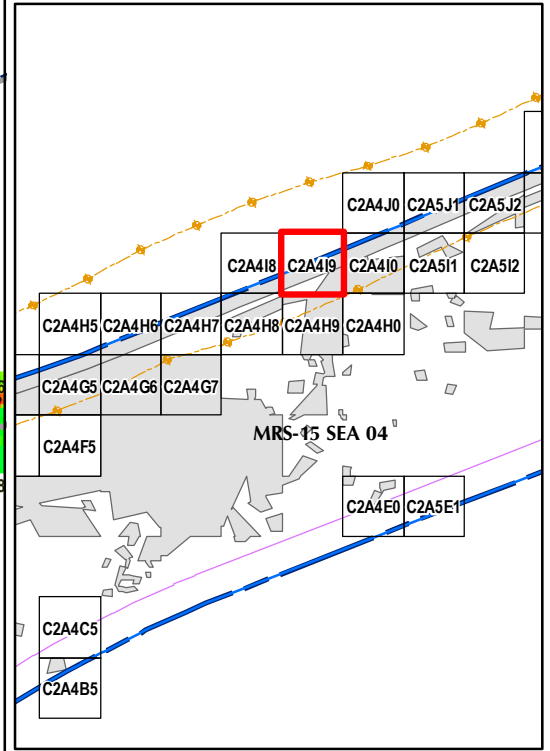
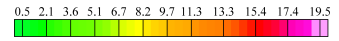




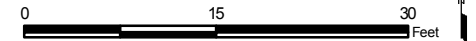
Legend

- Target Location
- Seaside MRA Boundary
- Roadway Alignment
- SCA Polygons (Investigation Areas)
- Utility Corridor
- MRS Boundary

Response (Stack)
mV



State Plane California IV, NAD 1983 (U.S. Survey Foot)

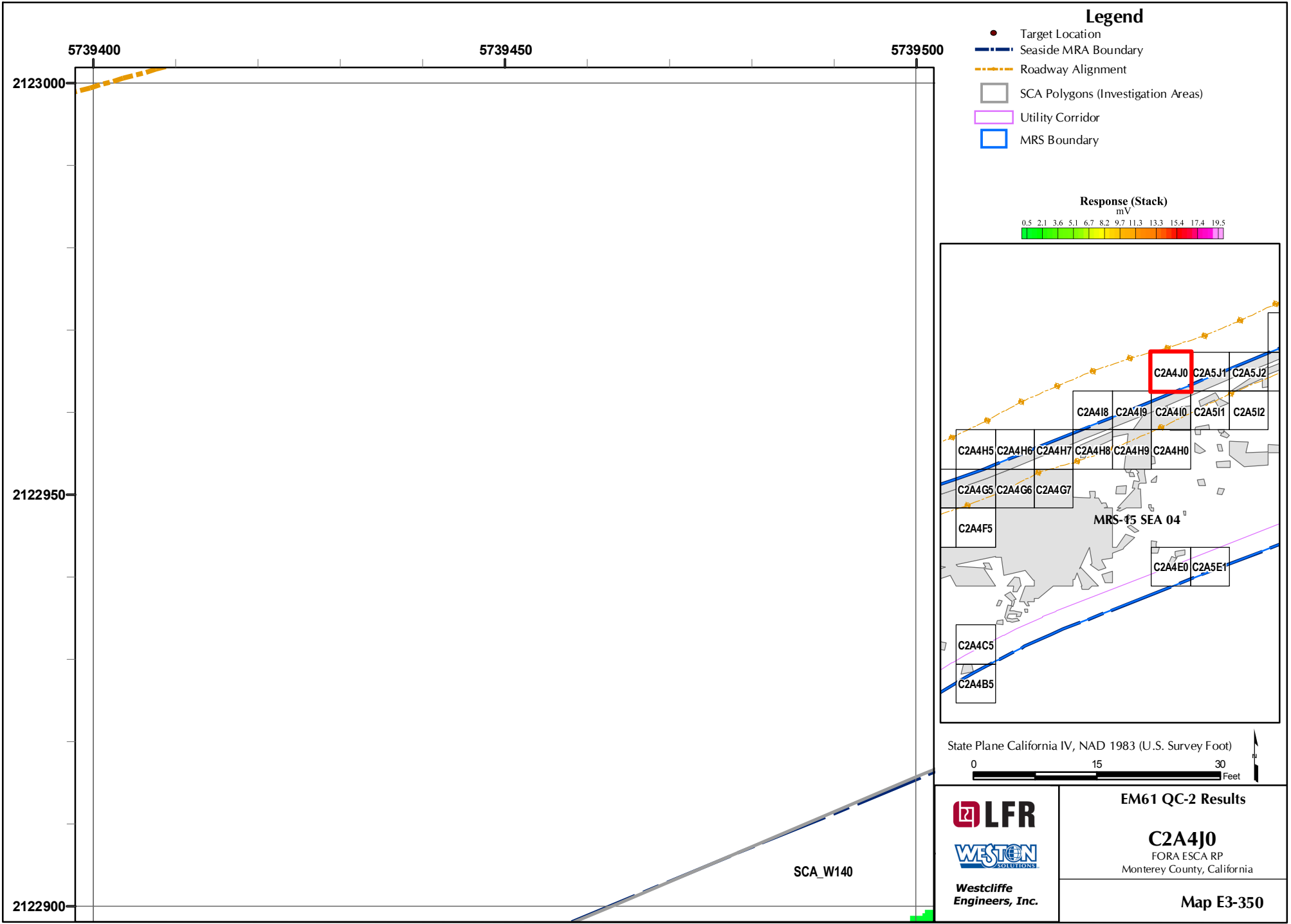


LFR
WESTON
SOLUTIONS
Westcliffe
Engineers, Inc.

EM61 QC-2 Results

C2A4I9
FORA ESCA RP
Monterey County, California

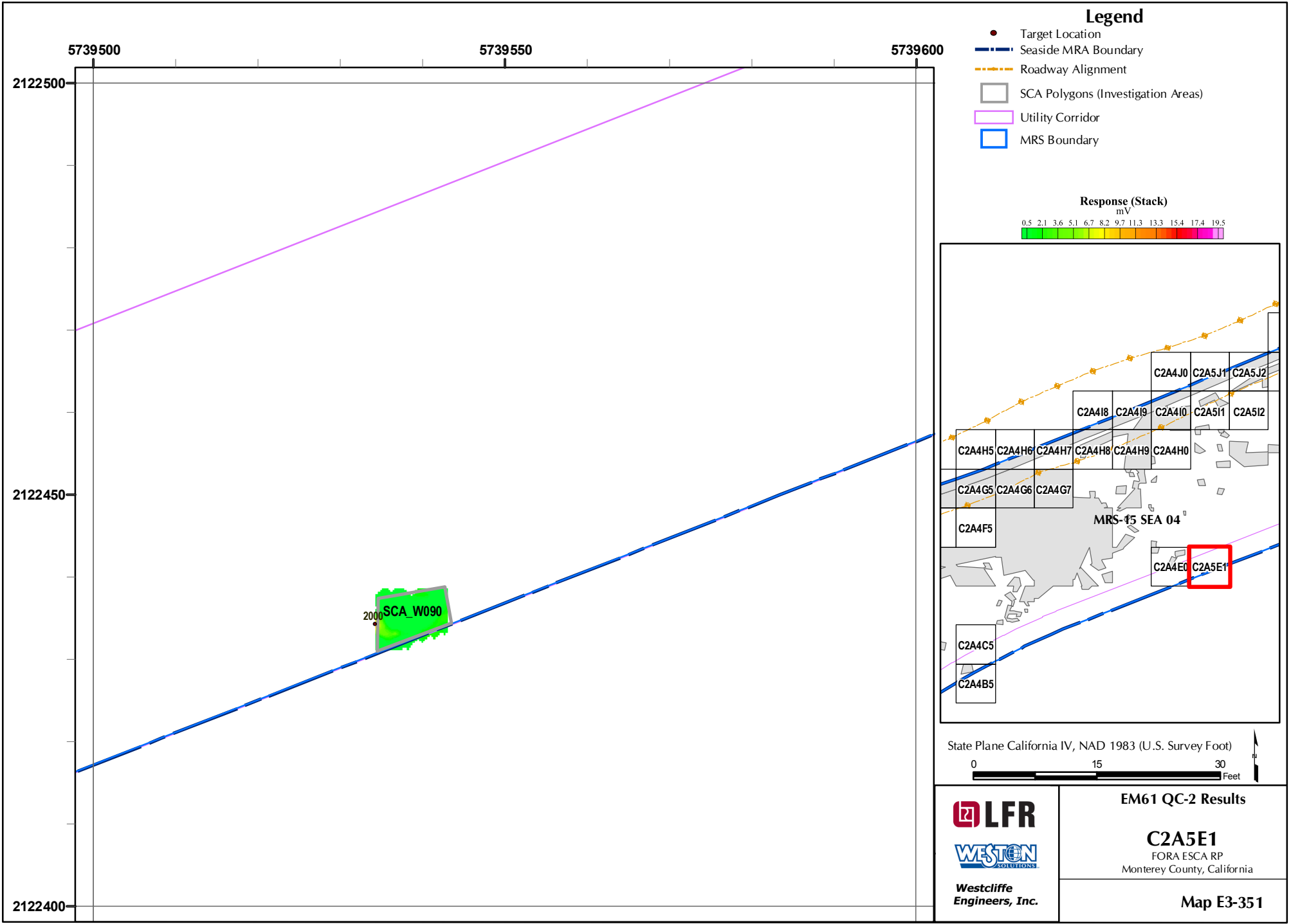
Map E3-349



EM61 QC-2 Results

C2A4J0
FORA ESCA RP
Monterey County, California

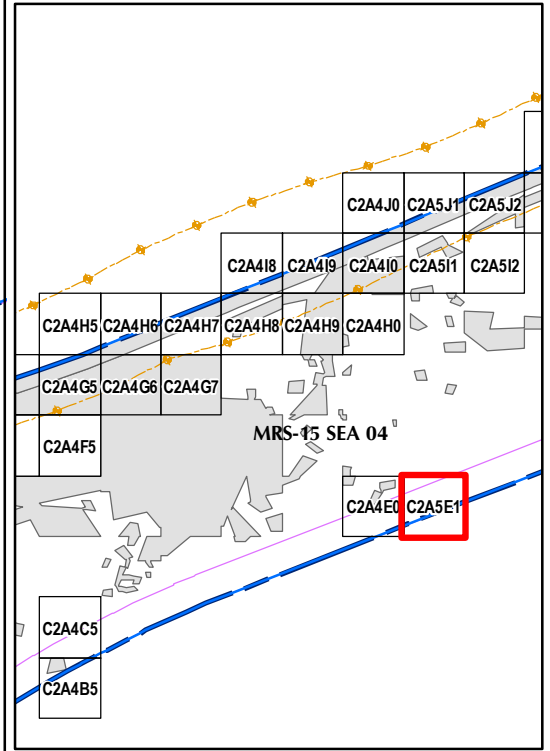
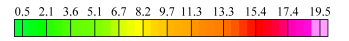
Map E3-350



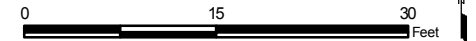
Legend

- Target Location
- Seaside MRA Boundary
- Roadway Alignment
- SCA Polygons (Investigation Areas)
- Utility Corridor
- MRS Boundary

Response (Stack)
mV

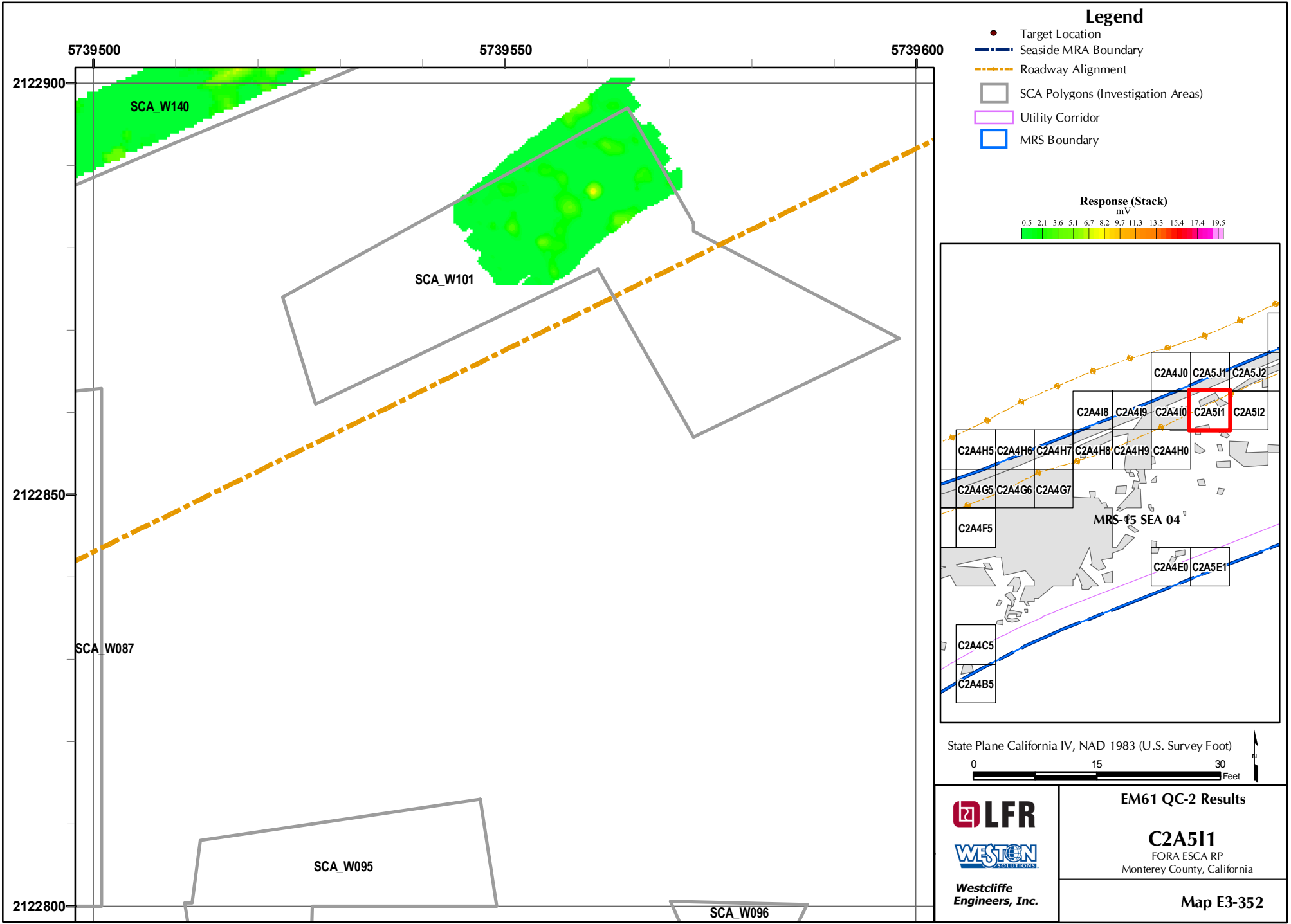


State Plane California IV, NAD 1983 (U.S. Survey Foot)



LFR
WESTON SOLUTIONS
Westcliffe Engineers, Inc.

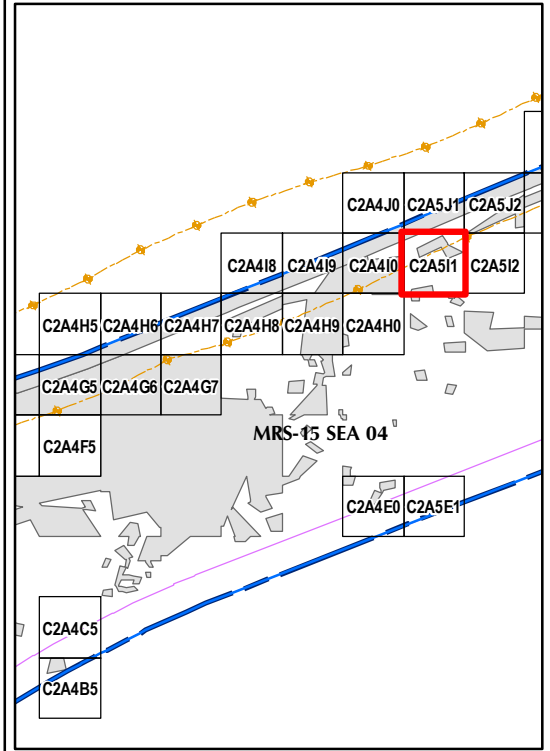
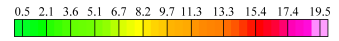
EM61 QC-2 Results
C2A5E1
FORA ESCA RP
Monterey County, California
Map E3-351



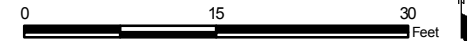
Legend

- Target Location
- Seaside MRA Boundary
- - - Roadway Alignment
- SCA Polygons (Investigation Areas)
- Utility Corridor
- MRS Boundary

Response (Stack)
mV

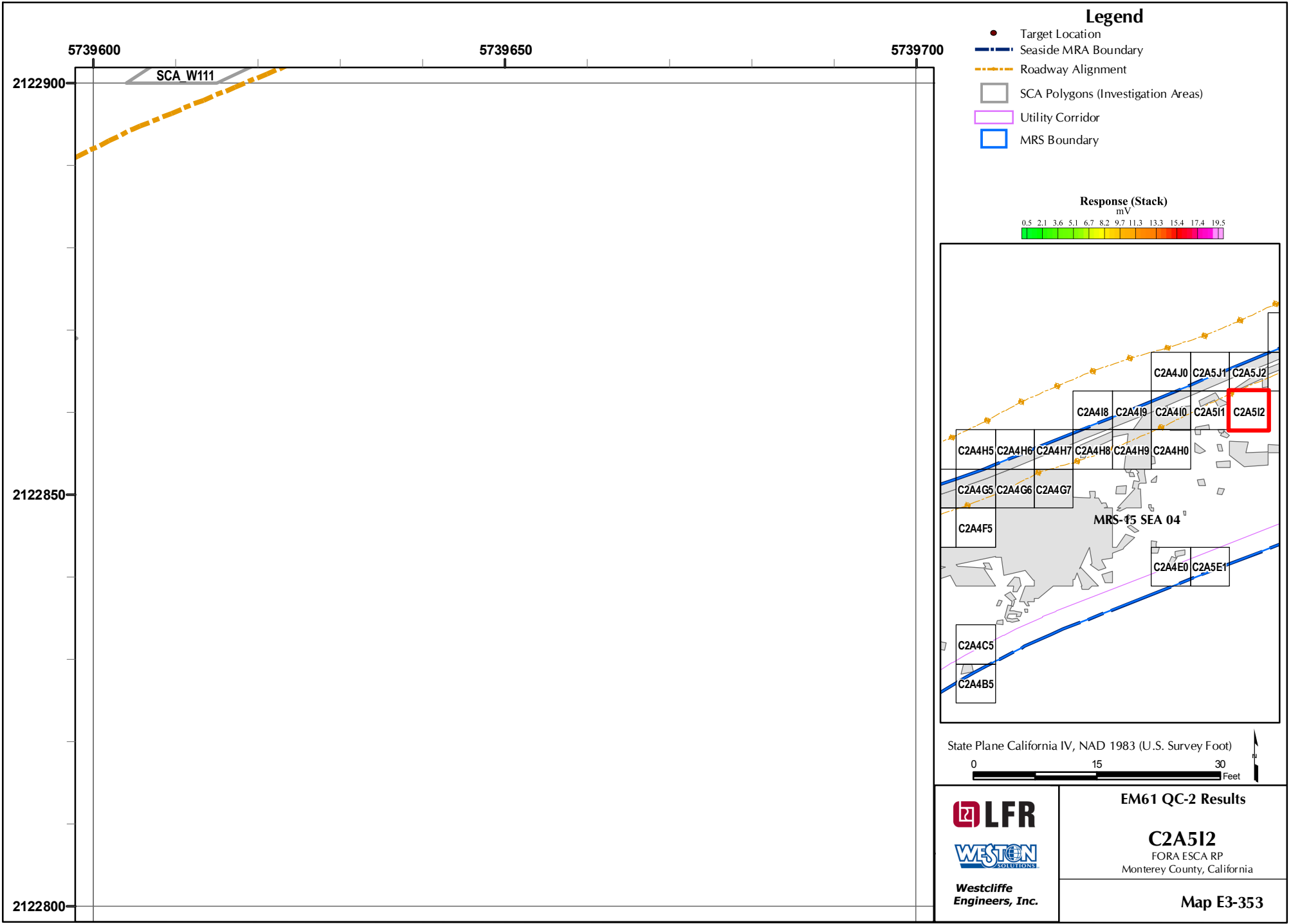


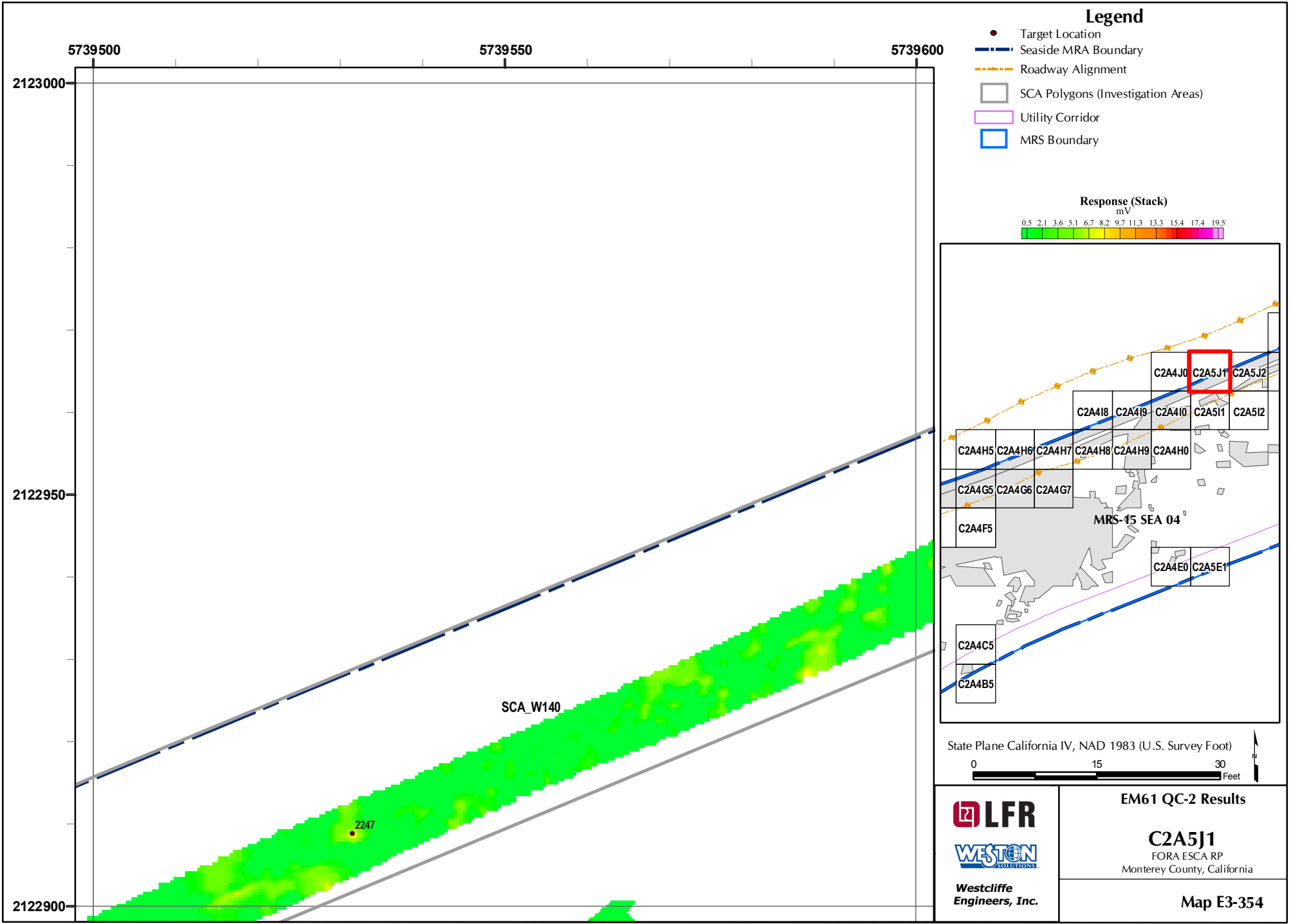
State Plane California IV, NAD 1983 (U.S. Survey Foot)



LFR
WESTON
SOLUTIONS
Westcliffe
Engineers, Inc.

EM61 QC-2 Results
C2A511
FORA ESCA RP
Monterey County, California
Map E3-352

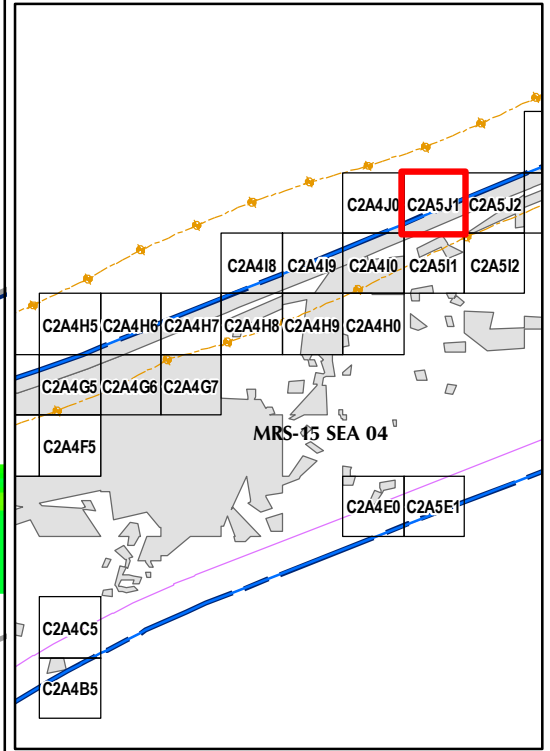




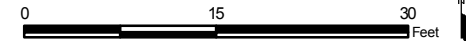
Legend

- Target Location
- Seaside MRA Boundary
- Roadway Alignment
- SCA Polygons (Investigation Areas)
- Utility Corridor
- MRS Boundary

Response (Stack)
mV

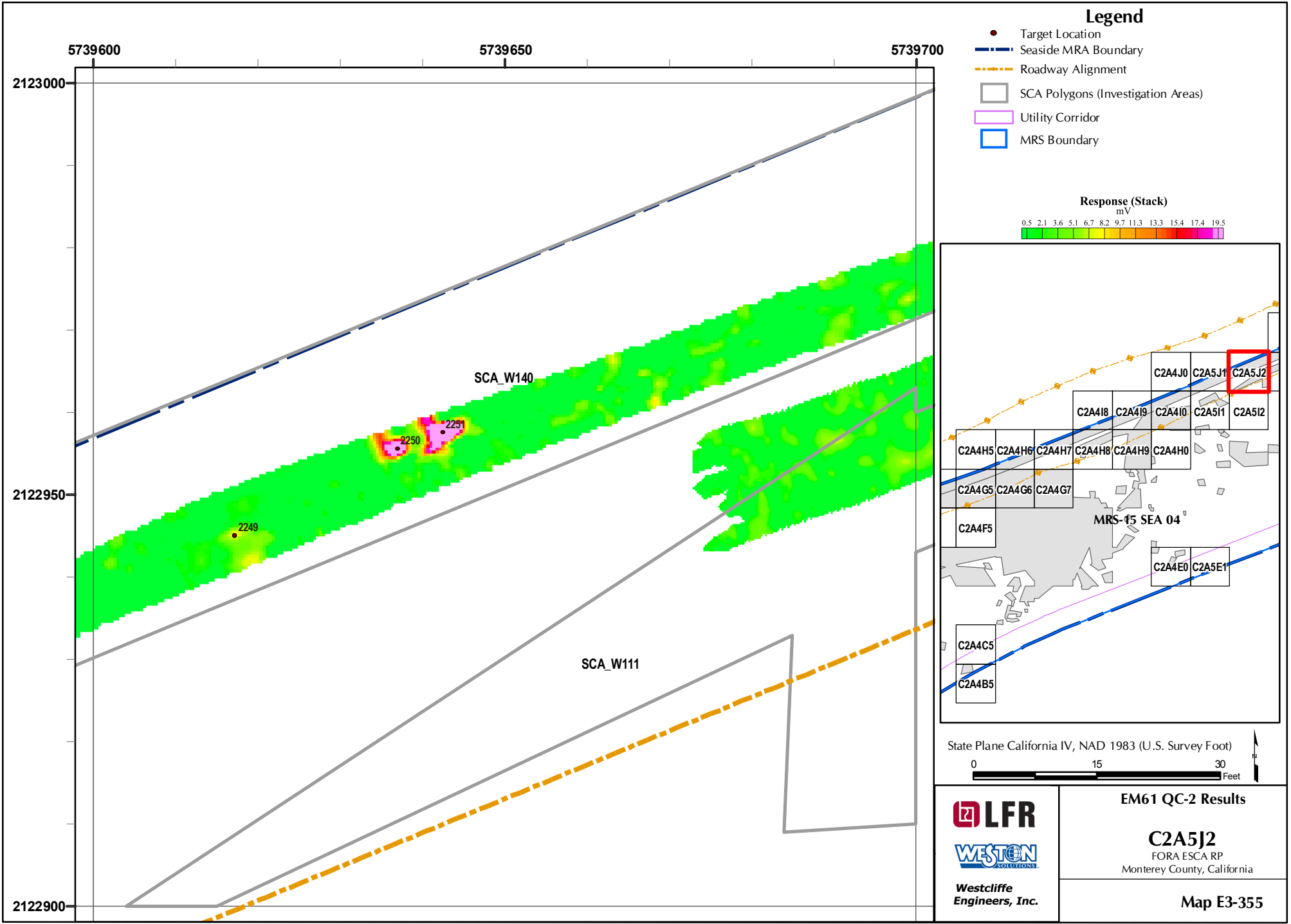


State Plane California IV, NAD 1983 (U.S. Survey Foot)

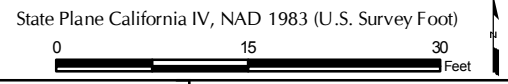
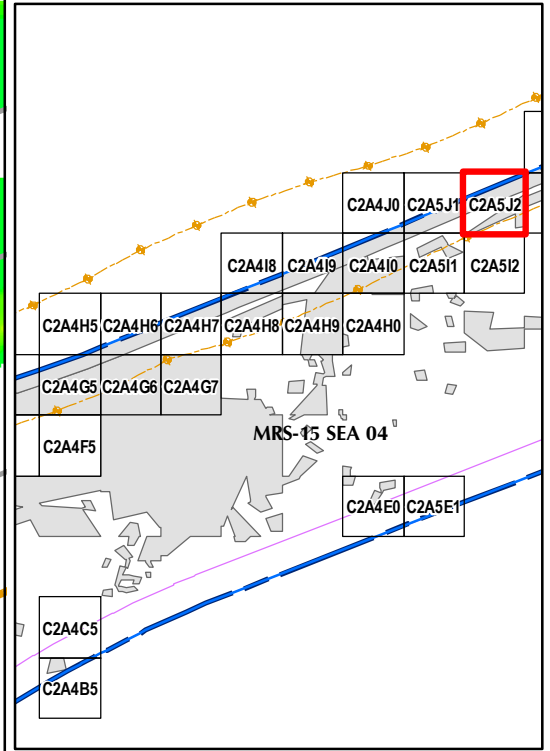
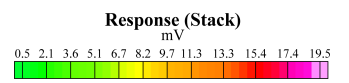


LFR
WESTON
SOLUTIONS
Westcliffe
Engineers, Inc.

EM61 QC-2 Results
C2A5J1
FORA ESCA RP
Monterey County, California
Map E3-354



- ### Legend
- Target Location
 - Seaside MRA Boundary
 - - - Roadway Alignment
 - SCA Polygons (Investigation Areas)
 - Utility Corridor
 - MRS Boundary



 Westcliffe Engineers, Inc.	EM61 QC-2 Results
	C2A5J2 FORA ESCA RP Monterey County, California
Map E3-355	