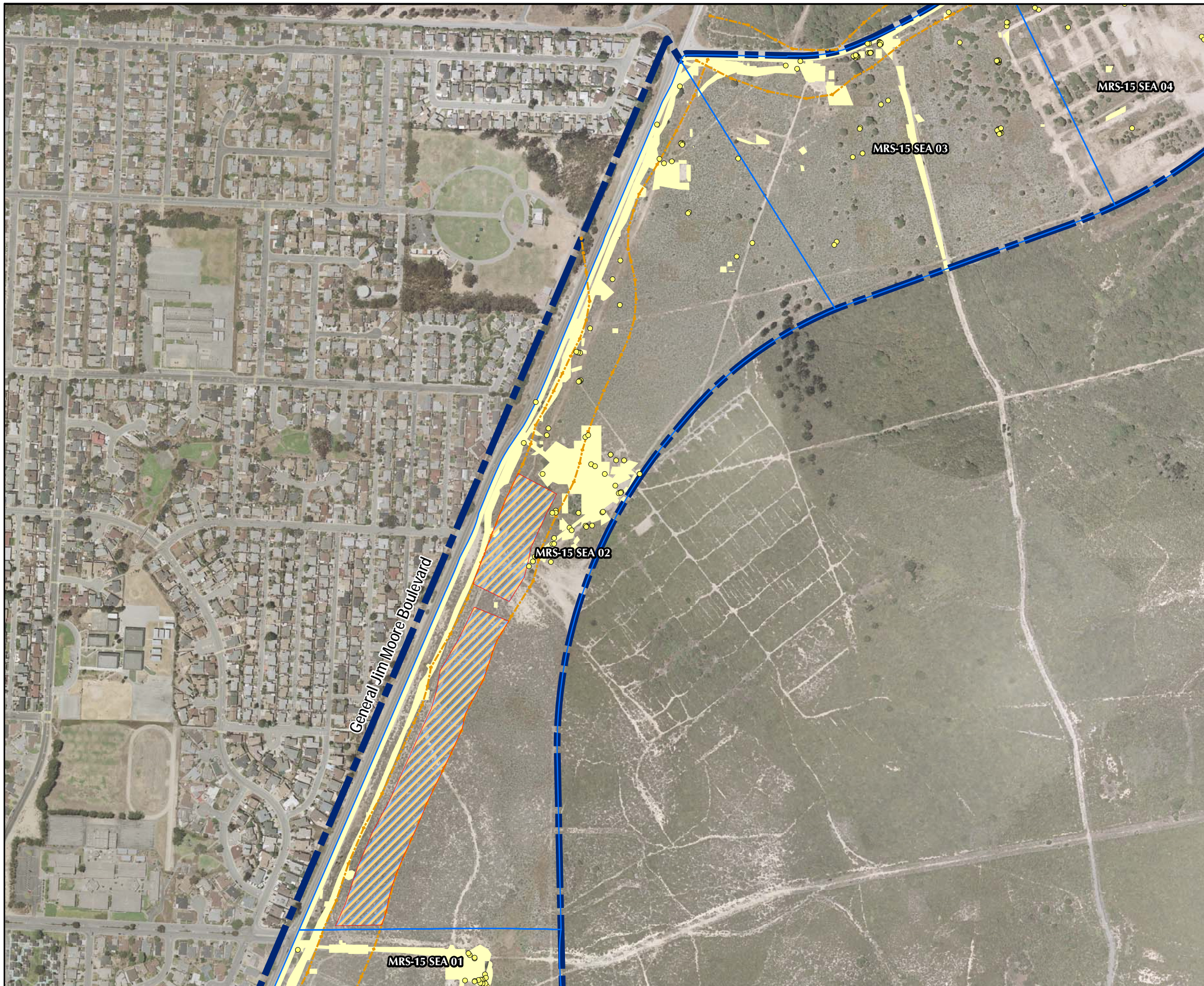






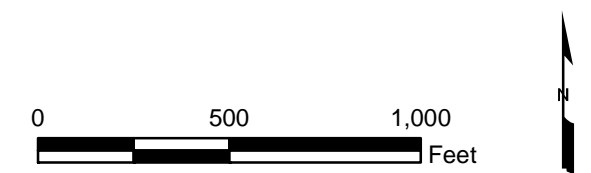
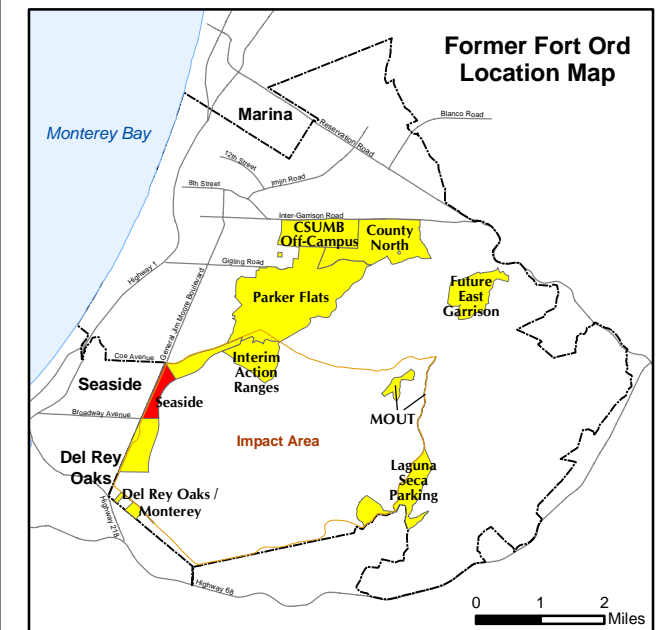


T:\Projects\Seaside\AAR_Rdwy_UtilityCorridor\Sea2_GorillaShotArea.mxd - 9/11/2008 @ 9:43:09 AM



Legend

-  Area with Soil Stabilization
-  Seaside MRA
-  MRS Boundary
-  Roadway Alignment
-  SCA Polygon
-  SCA Point



Westcliffe
Engineers, Inc.

Areas with Soil Stabilization MRS-15SEA.2

FORA ESCA RP
Monterey County, California

Figure 3-23