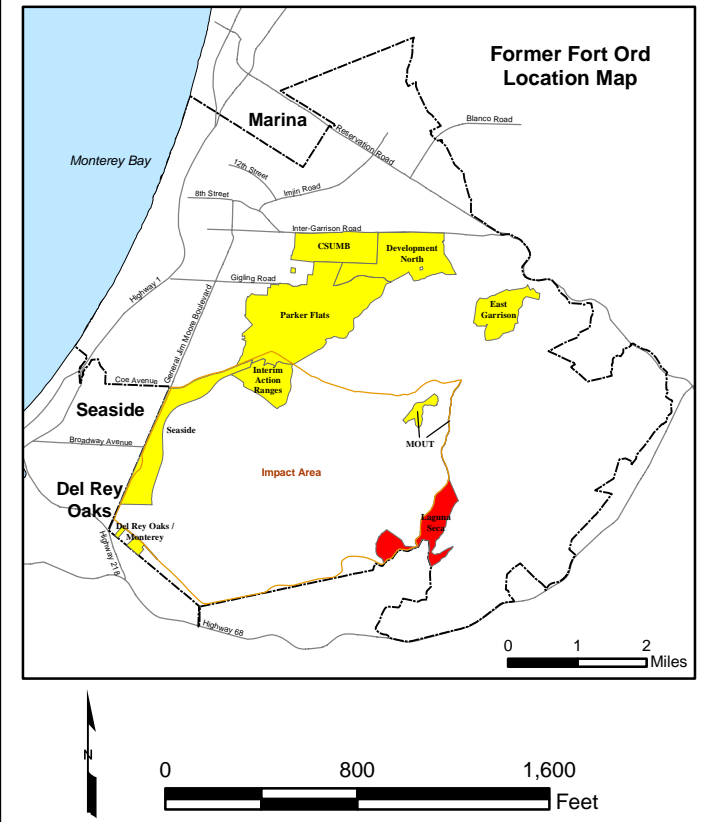


T:\Projects\SEDRL\aguna Seca\MXD\10\_1-1 Facility Profile Physical Features.mxd - 6/6/2008 @ 9:25:18 AM



- ### Legend
- School
  - Fire Station
  - Gate
  - Entry Forbidden Sign
  - Sign
  - Hydrant
  - High-Power Transmission Line Tower
  - Electrical Line Pole
  - Former Fort Ord Boundary
  - Munitions Response Area
  - Major Road
  - Electrical Line
  - Fence
  - Gas Line
  - Storm Line
  - Telephone Line
  - Water Line
  - Sewer Line
  - High-Power Transmission Line and Right of Way
  - R9211 Structure
  - E23.1 USACE Parcel



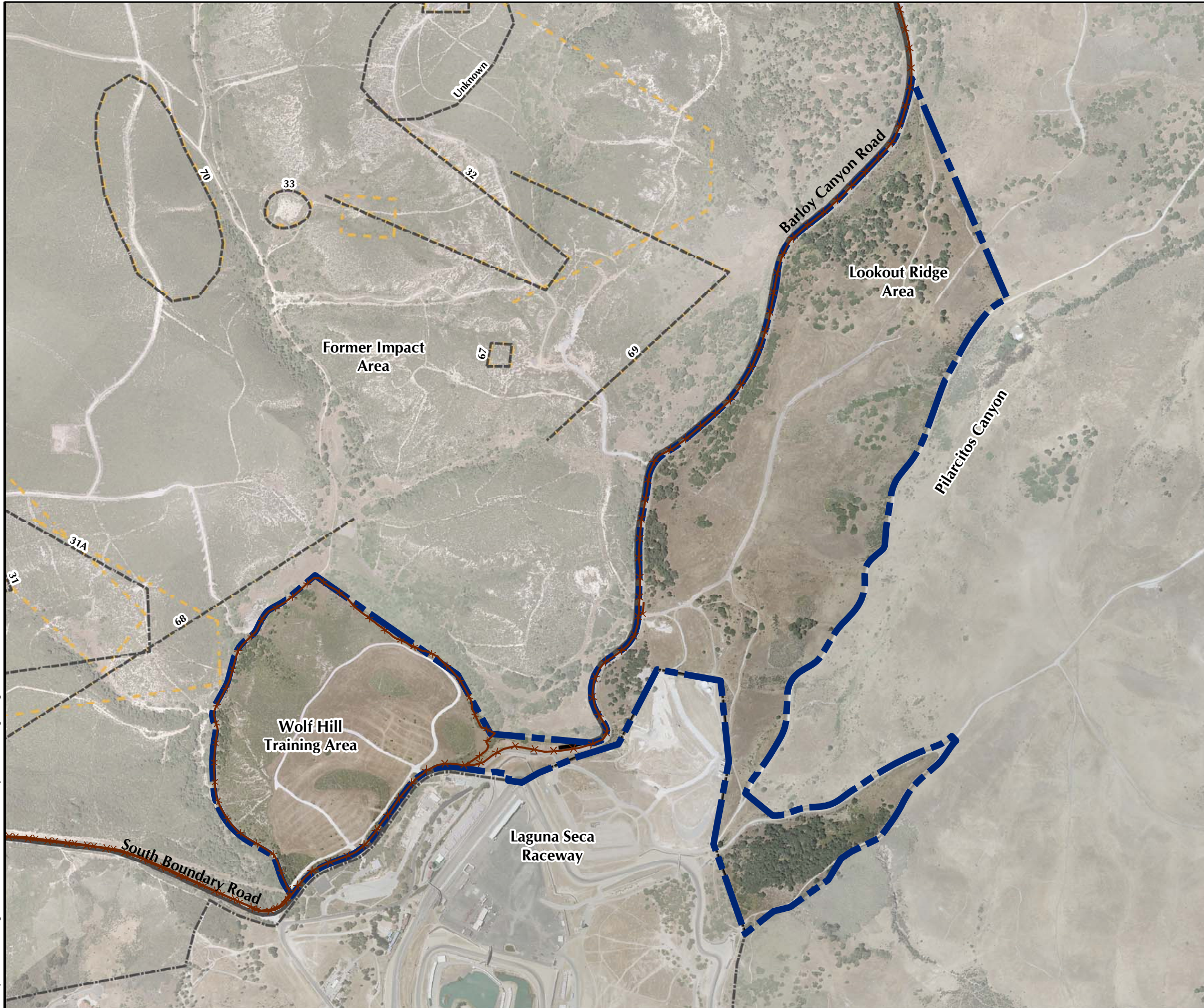
**Laguna Seca MRA Facility Profile Physical Features**

FORA ESCA RP  
Monterey County, California

**Figure 10.1-1**

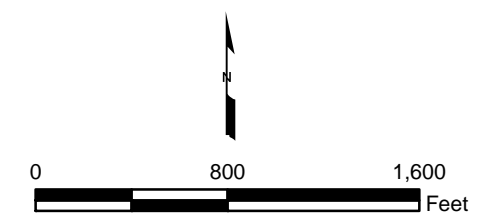
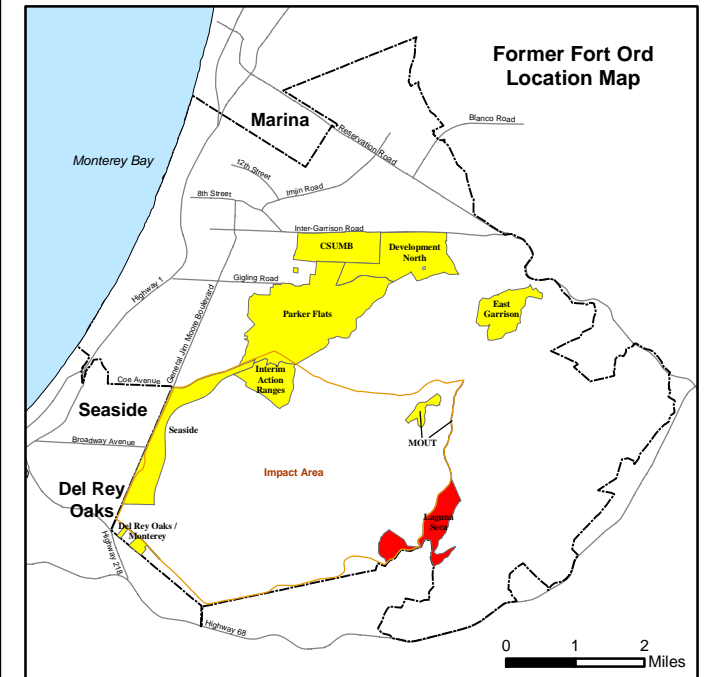


T:\Projects\SEDR\Laguna Seca\MXD\10\_1-2 Facility Profile Firing Ranges.mxd - 6/5/2008 @ 12:35:36 PM



### Legend

- Munitions Response Area
- 42 Firing Range
- Historical Range
- Major Road
- Fence
- Former Fort Ord Boundary



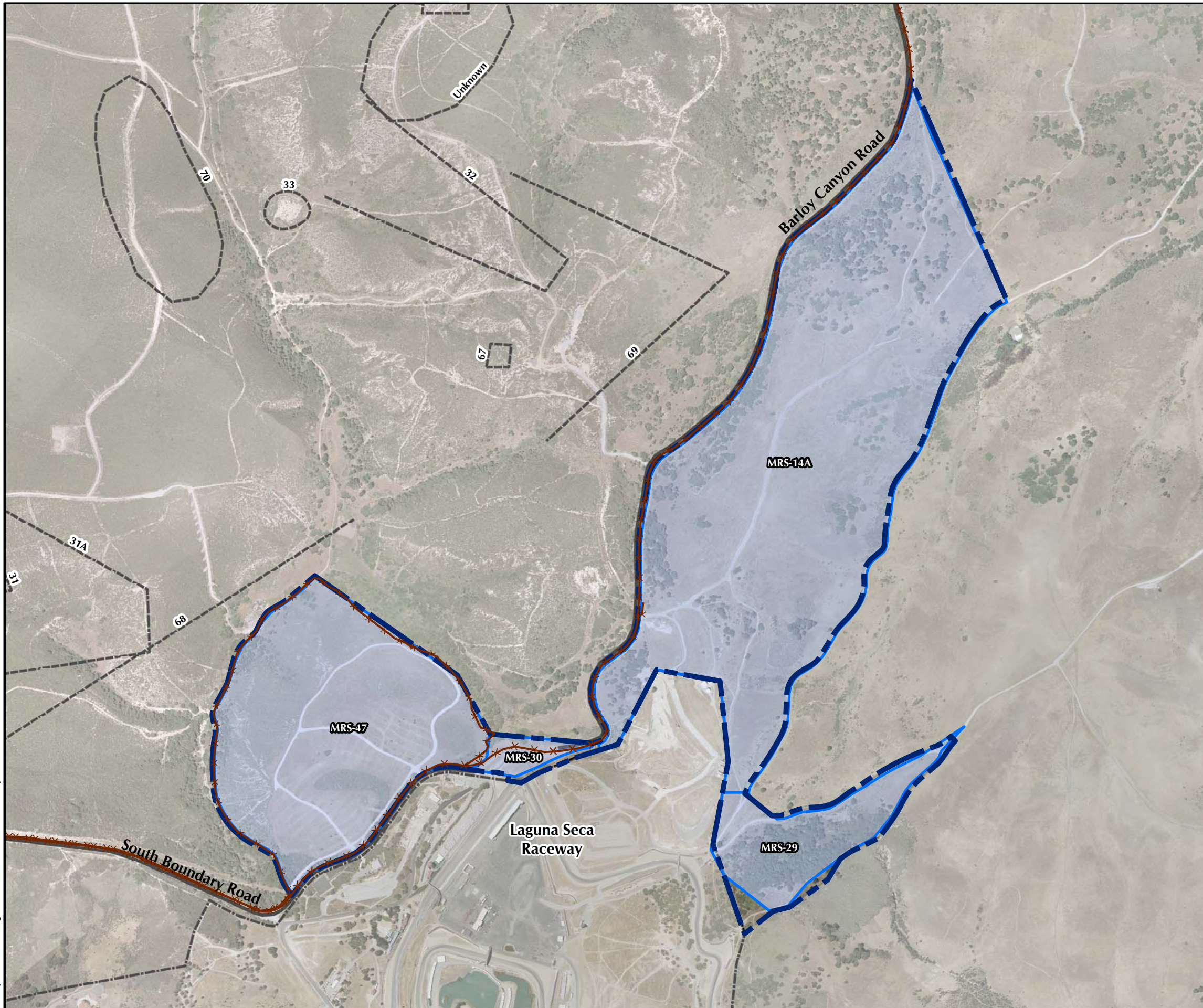
### Laguna Seca MRA Facility Profile Ranges and Training Sites

FORA ESCA RP  
Monterey County, California

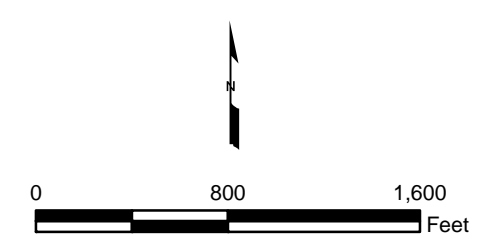
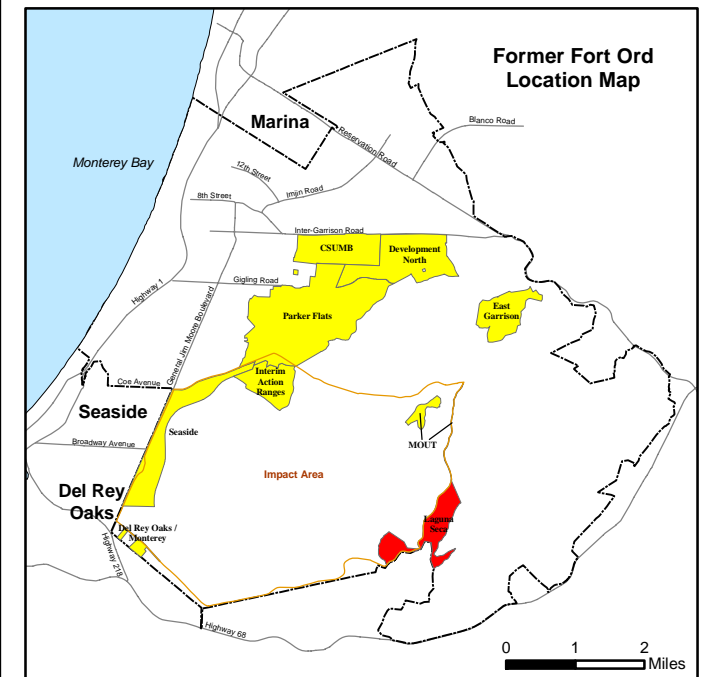
Figure 10.1-2



T:\Projects\SEDR\Laguna Seca\MXD\10\_1-3 Facility Profile MRS Boundaries.mxd - 6/5/2008 @ 12:35:40 PM



- ### Legend
-  Munitions Response Area
  -  Major Road
  -  Fence
  -  67 Firing Range
  -  Former Fort Ord Boundary
  -  MRS-14A Munitions Response Site



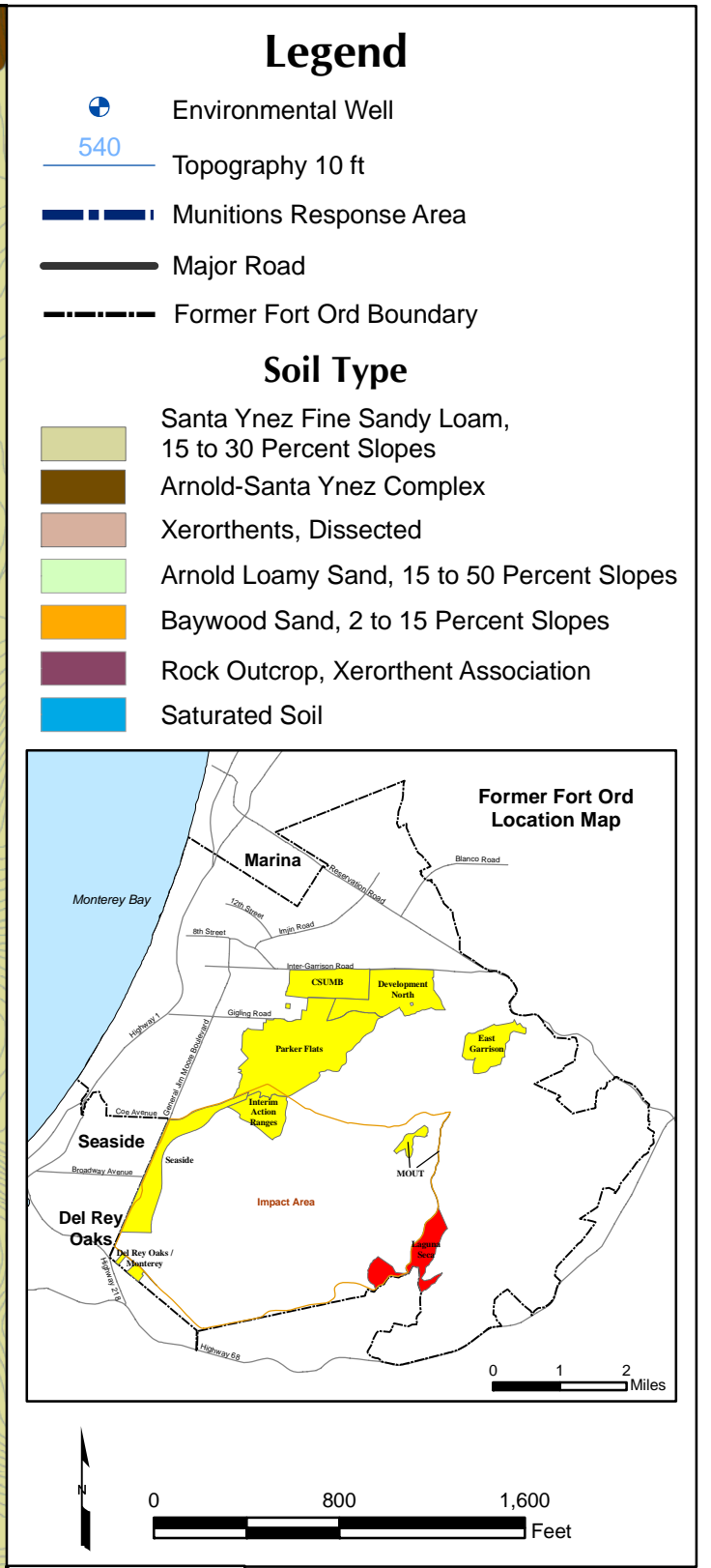
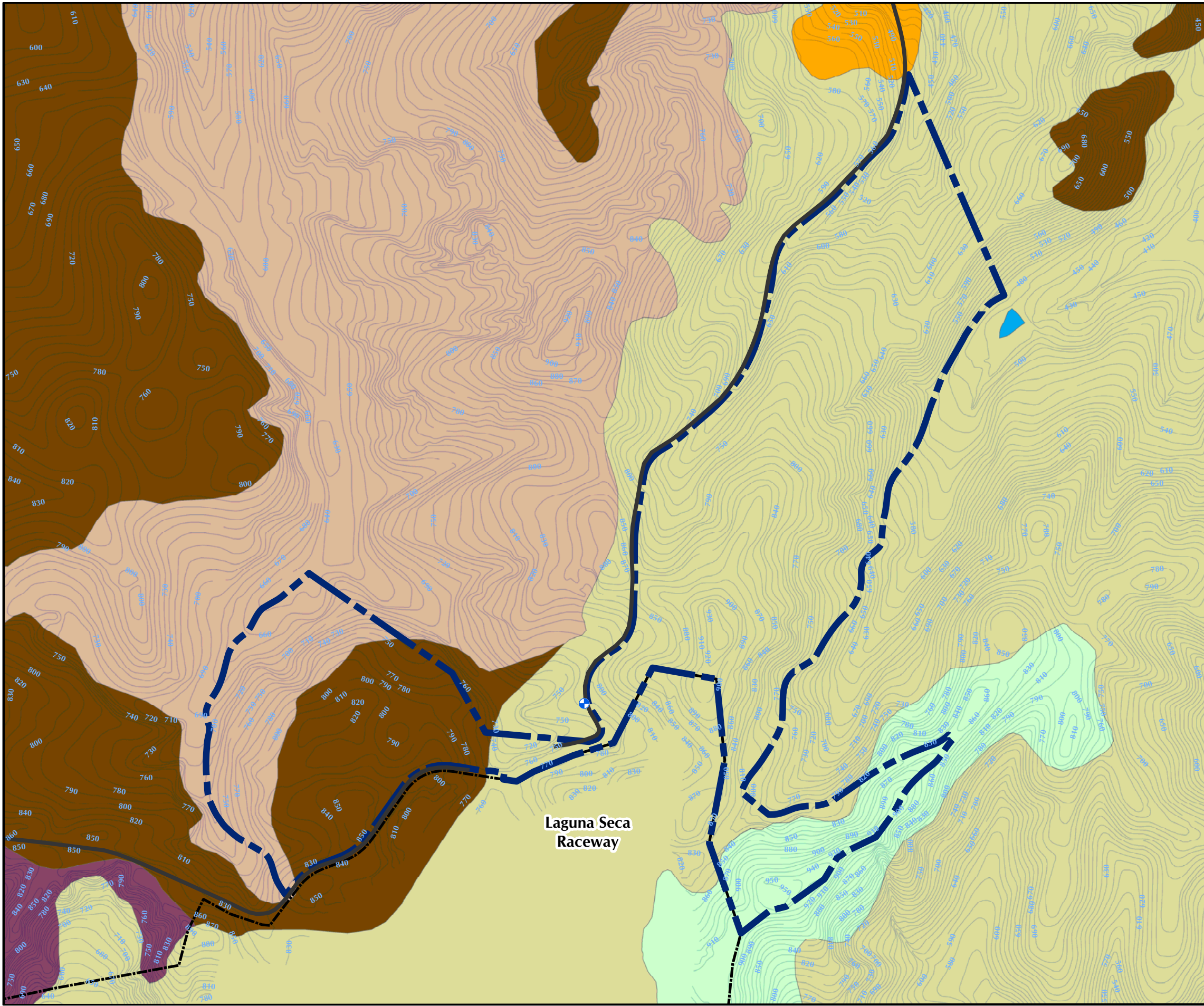
**Laguna Seca MRA Facility Profile  
Munitions Response Site  
Boundaries**

FORA ESCA RP  
Monterey County, California

**Figure 10.1-3**



T:\Projects\SEDR\Laguna Seca\MXD\10\_2-1 Physical Profile Topography and Soil Type.mxd - 6/5/2008 @ 1:09:33 PM



**LFR**  
WESTON SOLUTIONS  
Westcliffe Engineers, Inc.

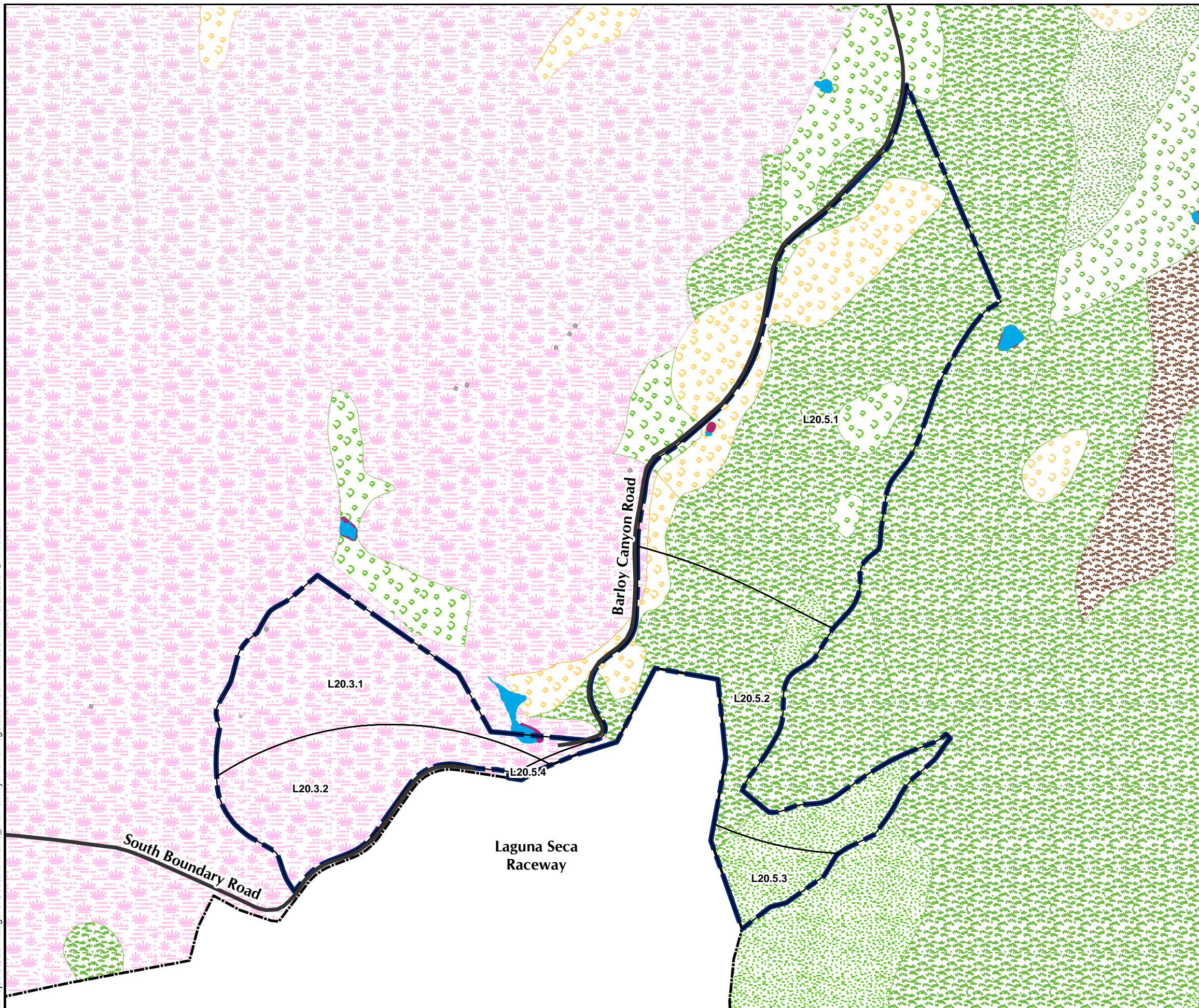
**Laguna Seca MRA Physical Profile Topography and Soil Type**

FORA ESCA RP  
Monterey County, California

**Figure 10.2-1**



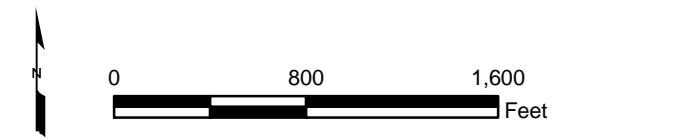
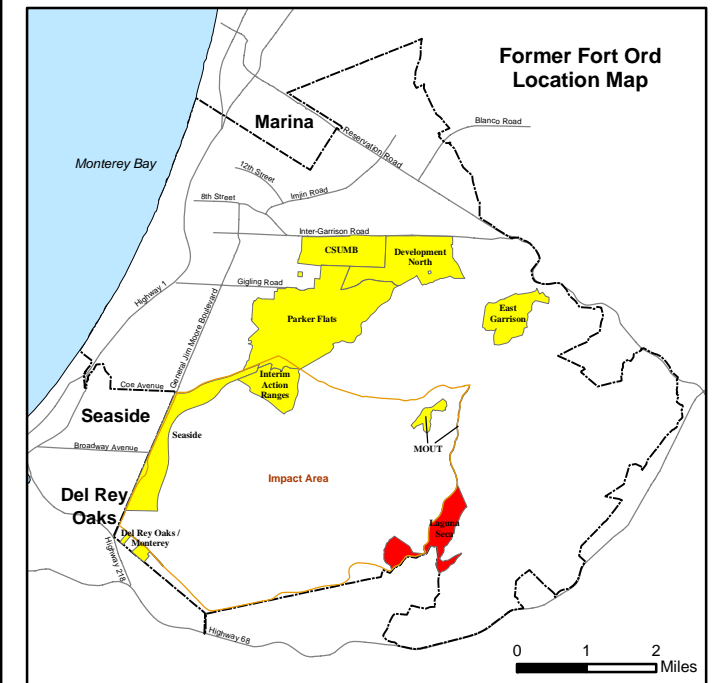
T:\Projects\SEDR\Laguna Seca\MXD\10\_2-2 Facility Profile Vegetation Communities.mxd - 6/5/2008 @ 1:10:22 PM



### Legend

- Munitions Response Area
  - Major Road
  - Former Fort Ord Boundary
  - USACE Parcel
- ### Vegetation Type
- Grassland
  - Maritime Chaparral
  - Inland Coast Live Oak Woodland
  - Coast Live Oak Savanna
  - Coastal Scrub
  - Ice Plant Mats
  - Valley Needlegrass Grassland (10-30%)
  - Aquatic Feature
  - Developed / Disturbed

Source: Flora and Fauna Baseline Study of Fort Ord, California, Jones and Stokes Association Inc., December 1992.



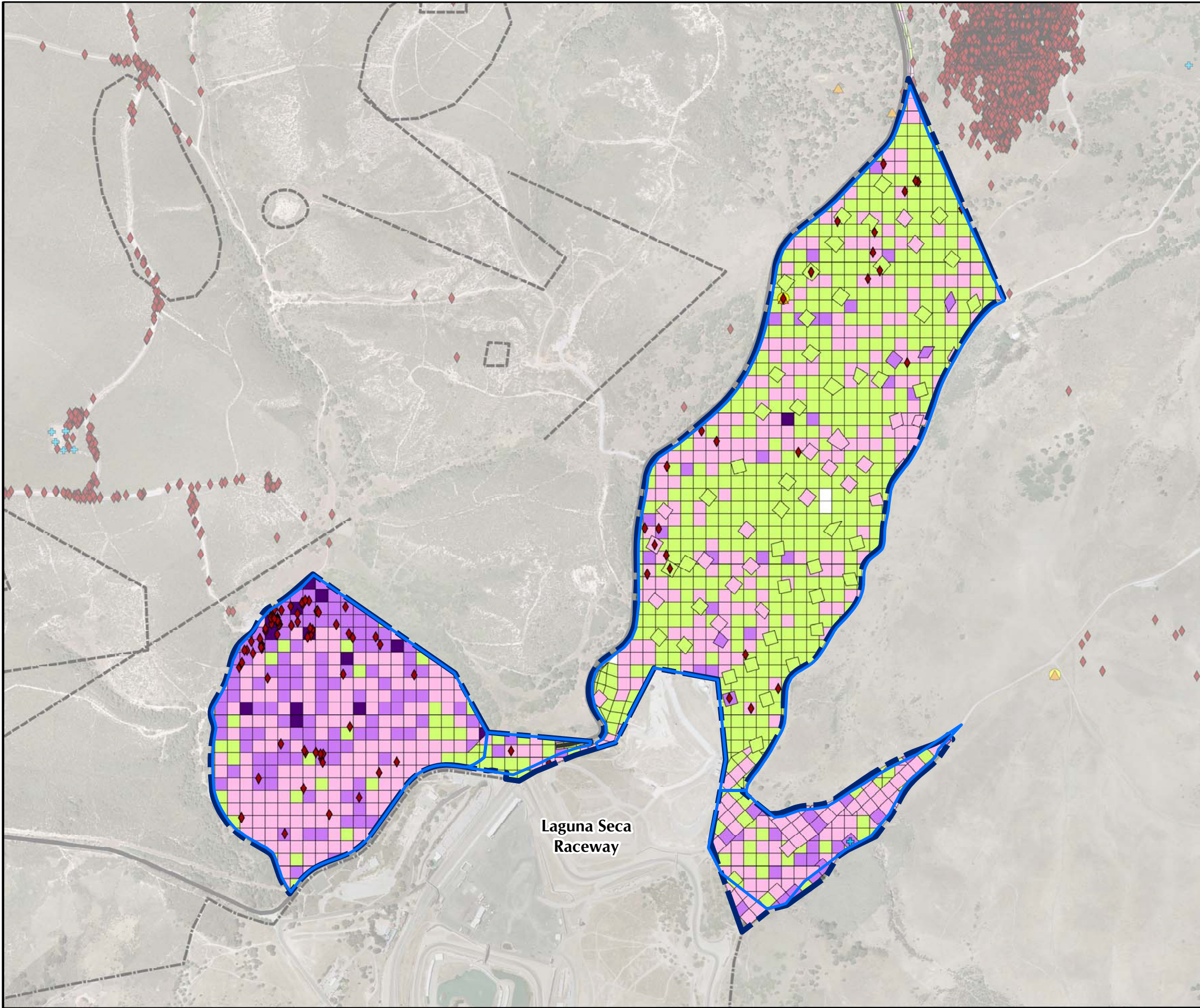
### Laguna Seca MRA Physical Profile Generalized Vegetation Communities

FORA ESCA RP  
Monterey County, California

Figure 10.2-2



T:\Projects\SEDRL\Aguna Seca\MXD\10\_3-1 Release Profile MEC and MD Locations.mxd - 6/5/2008 @ 1:19:18 PM



### Legend

- Munitions Response Area
- Firing Range
- Munitions Response Site
- Major Road
- Former Fort Ord Boundary

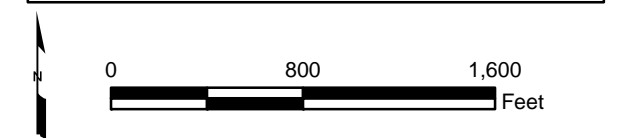
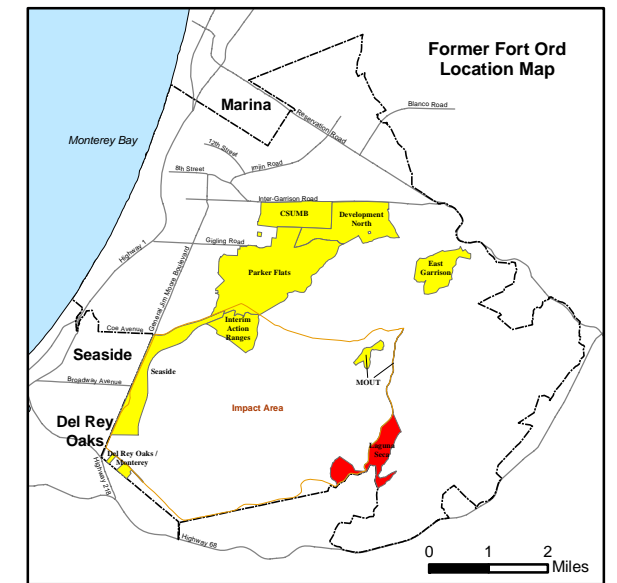
### MEC Type

- Unexploded Ordnance (UXO)
- Discarded Military Munition (DMM)
- Insufficient Data (ISD)
- Burial Pit Containing MEC

### Munitions Debris (MD) by Weight (total pounds per grid)

- No Data
- 0
- < 10
- 10 to 100
- > 100

Note: Munitions Debris (MD) includes scrap related to small arms ammunition.



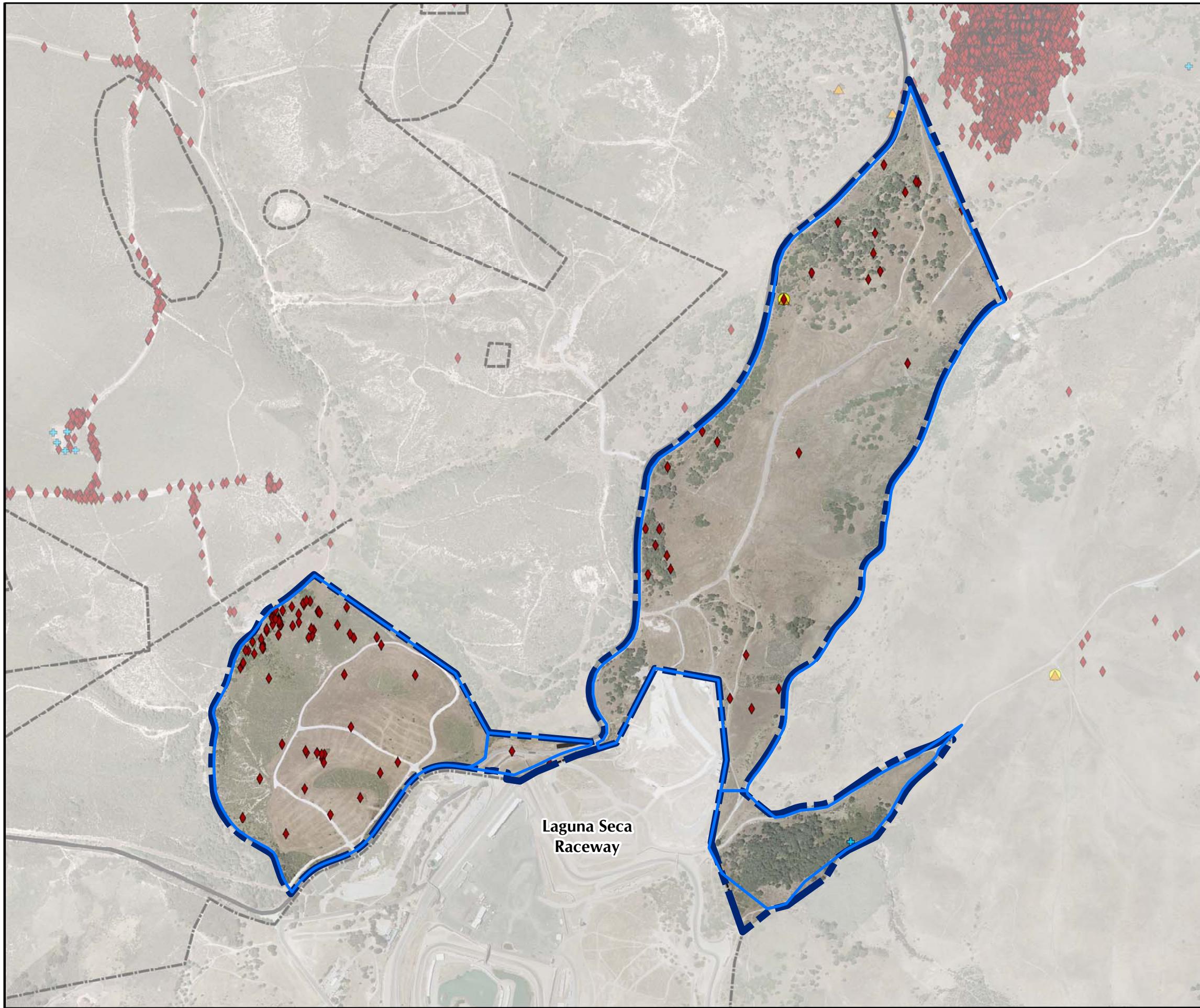
### Laguna Seca MRA Release Profile MEC and MD Locations

FORA ESCA RP  
Monterey County, California

Figure 10.3-1



T:\Projects\SEDR\Laguna Seca\MXD\10\_3-2 Release Profile MEC Locations.mxd - 6/5/2008 @ 1:19:54 PM



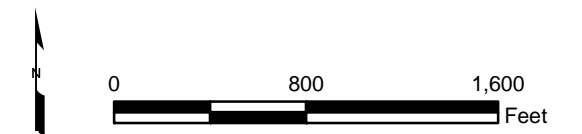
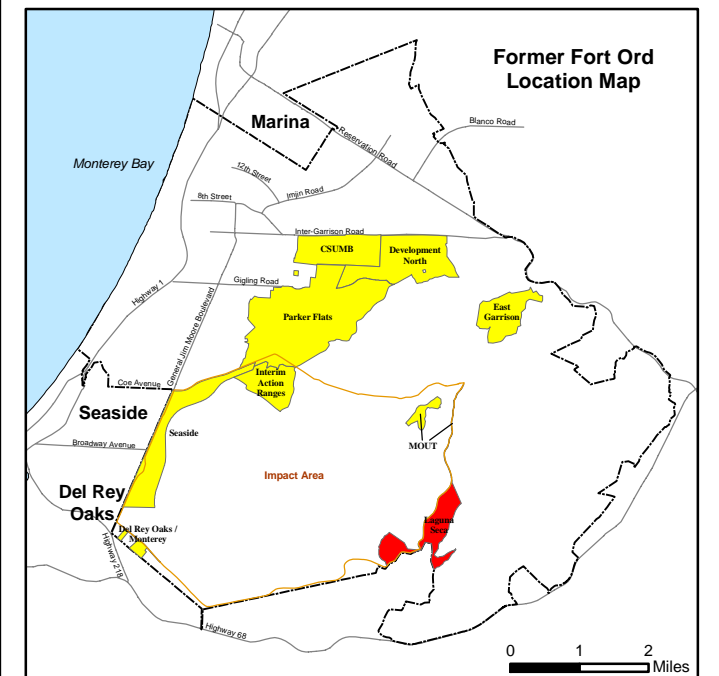
### Legend

- ▬▬▬ Munitions Response Area
- ▬ Munitions Response Site
- Firing Range
- Major Road
- Former Fort Ord Boundary

### MEC Type

- ◆ Unexploded Ordnance (UXO)
- ▲ Discarded Military Mmunition (DMM)
- + Insufficient Data (ISD)
- Burial Pit Containing MEC

Note: MEC locations may include more than one item.



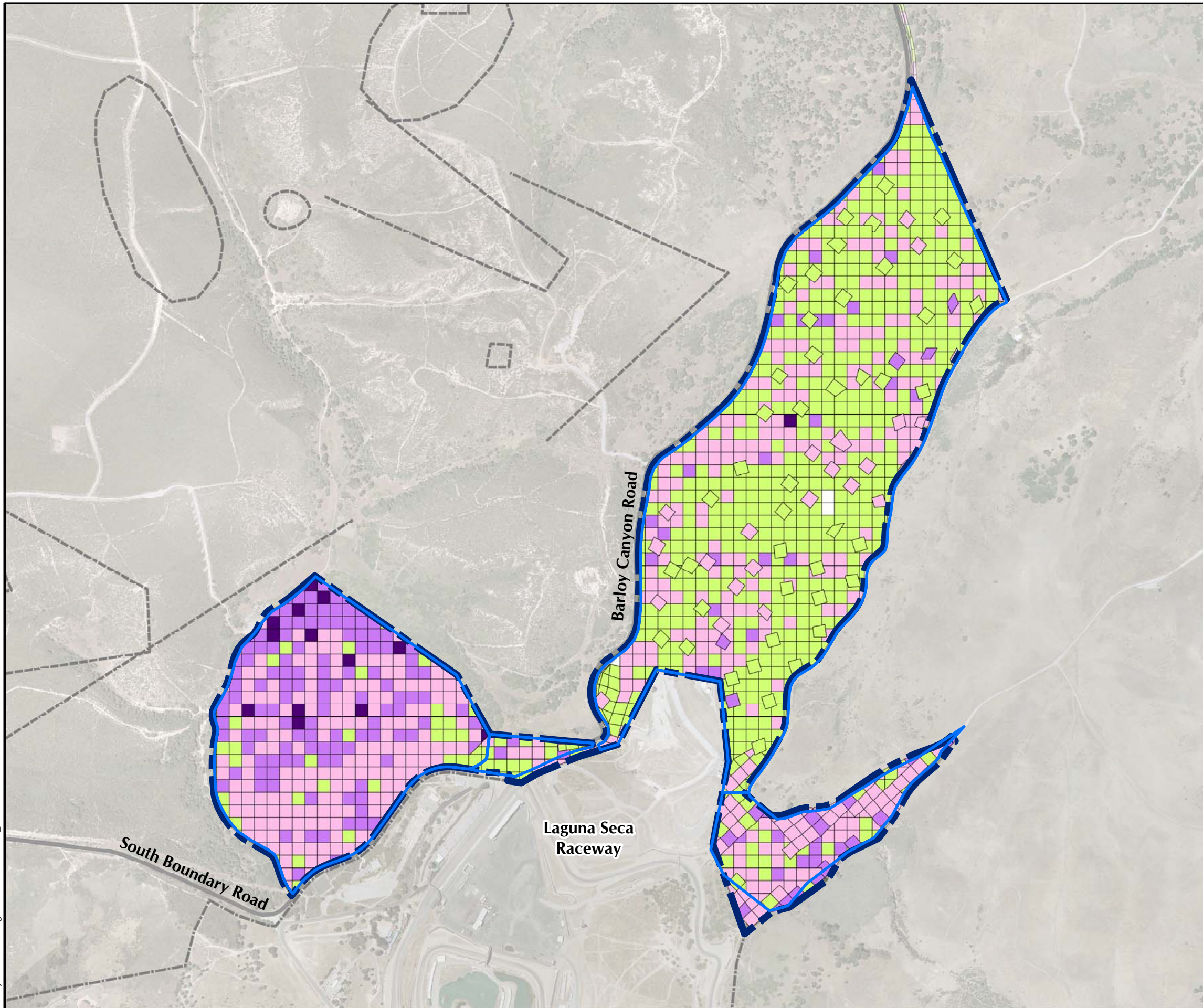
### Laguna Seca MRA Release Profile MEC Locations

FORA ESCA RP  
Monterey County, California

Figure 10.3-2



T:\Projects\SEDR\Laguna Seca\MXDs\10\_3-3 Release Profile MD Locations.mxd - 6/5/2008 @ 1:21:14 PM



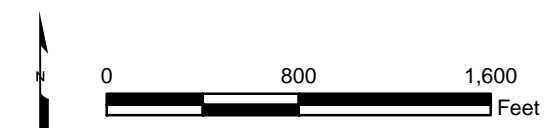
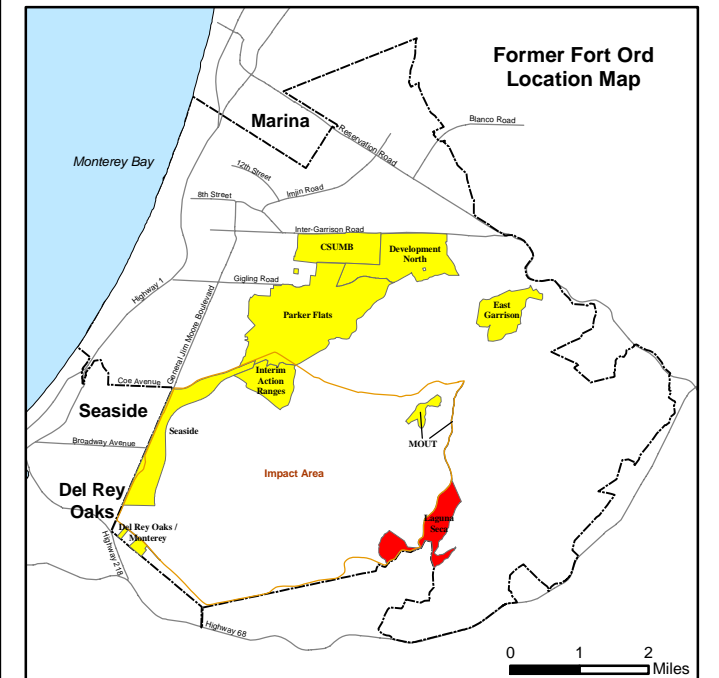
### Legend

- Munitions Response Area
- Munitions Response Site
- Firing Range
- Major Road
- Former Fort Ord Boundary

### Munitions Debris (MD) by Weight (total pounds per grid)

- No Data
- 0
- < 10
- 10 to 100
- > 100

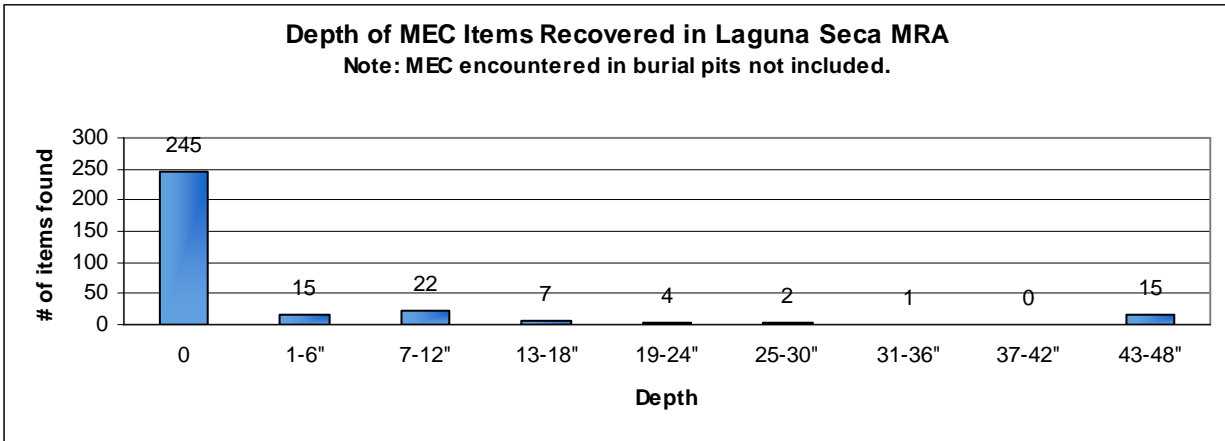
Note: Munitions Debris (MD) includes scrap related to small arms ammunition.



**Laguna Seca MRA Release Profile MD Locations**  
 FORA ESCA RP  
 Monterey County, California

Figure 10.3-3





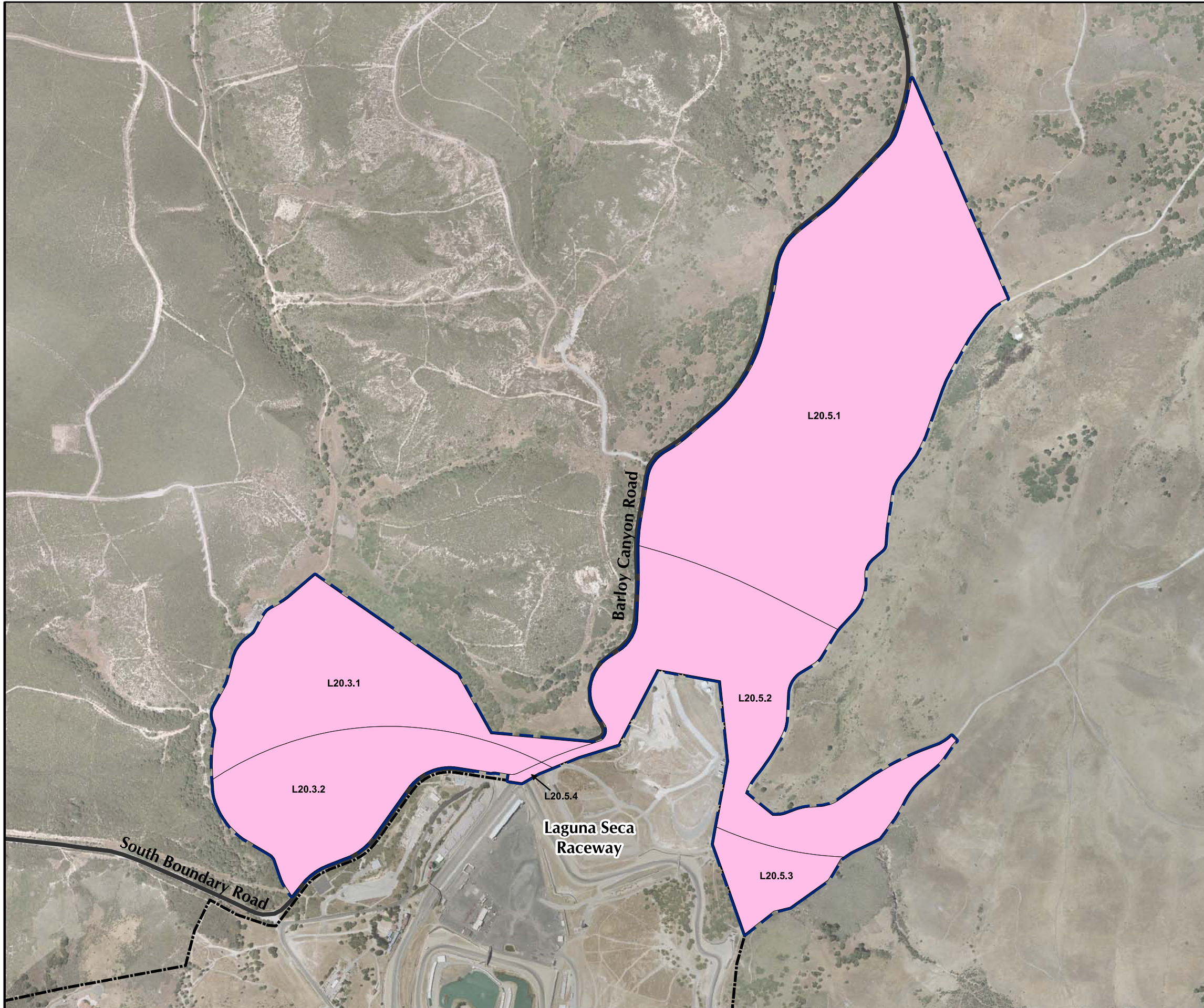
**Westcliffe  
Engineers, Inc.**

### Laguna Seca MRA Distribution of MEC Recovered by Depth Interval




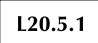
FORA ESCA RP  
Monterey County, California

**Figure 10.3-4**






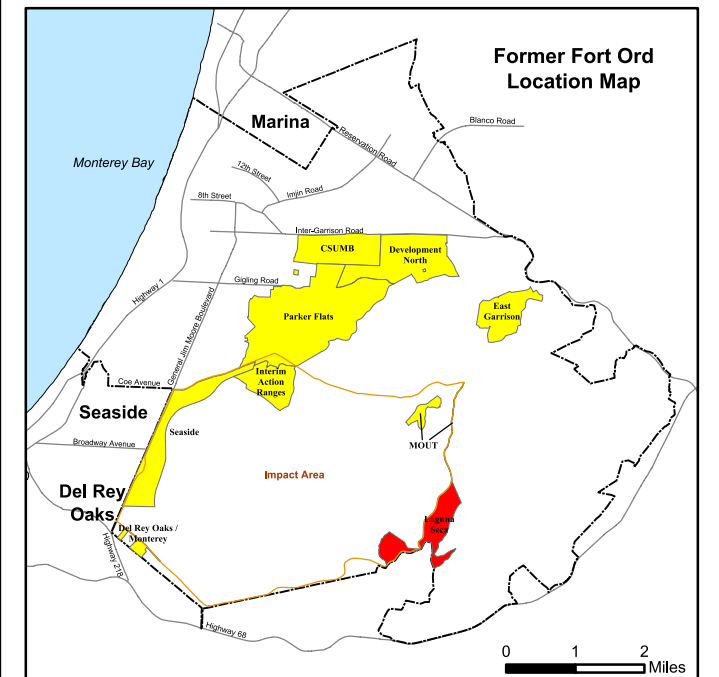


### Legend

-  Munitions Response Area
-  Major Road
-  Former Fort Ord Boundary
-  L20.5.1 USACE Parcel

### Future Land Use

-  Residential
-  Non-Residential (Development with Reserve Areas or Development with Restrictions)
-  Habitat Reserve

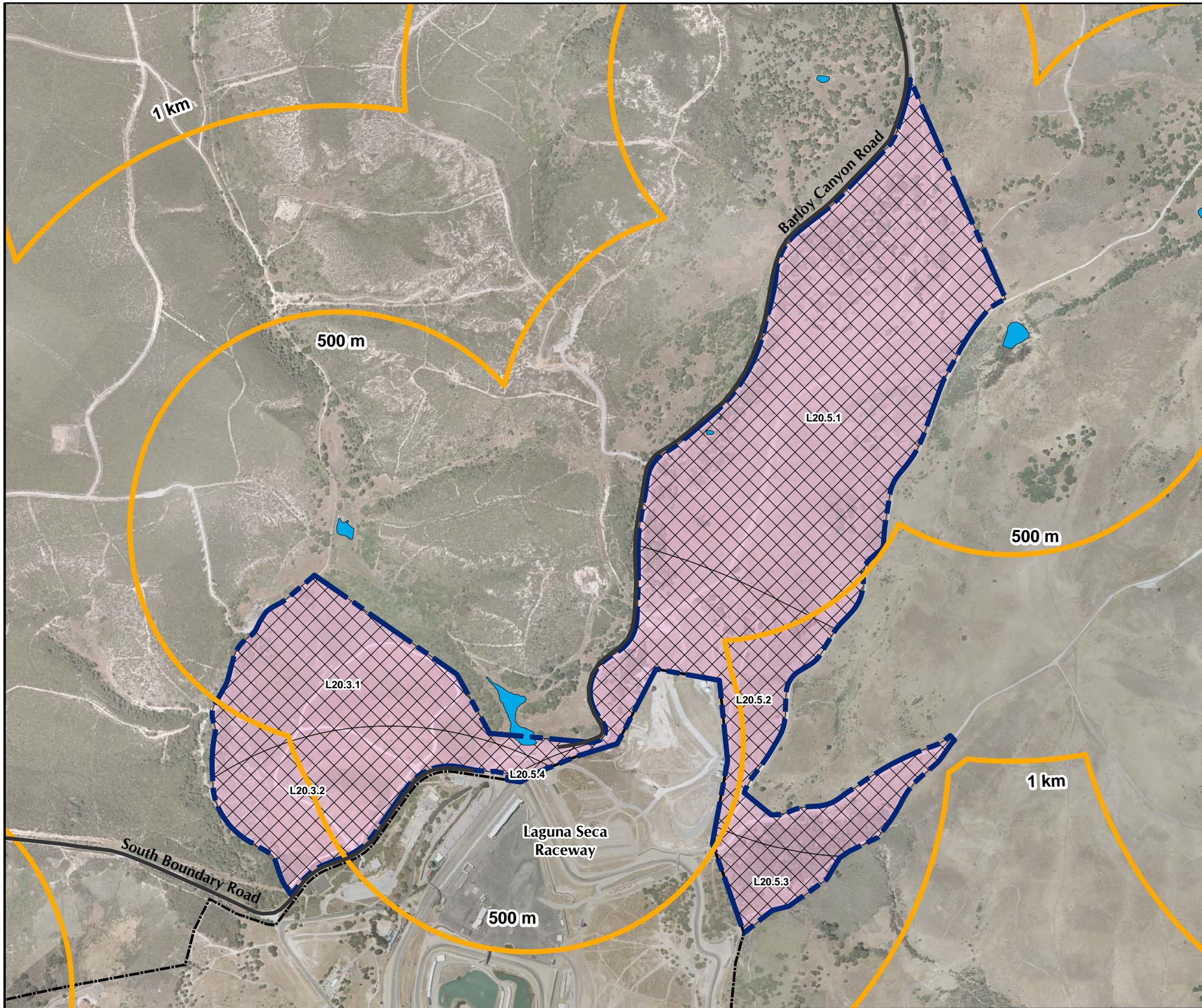


**Laguna Seca MRA  
Land Use Profile  
Reuse Plan**  
FORA ESCA RP  
Monterey County, California

Figure 10.4-1



T:\Projects\SEDRL\Laguna Seca\MXD\10\_5-1 Ecological Profile Habitat Type.mxd - 6/5/2008 @ 1:16:56 PM

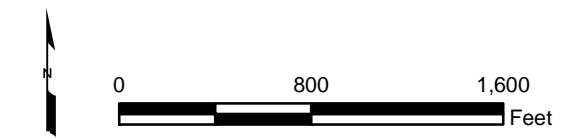
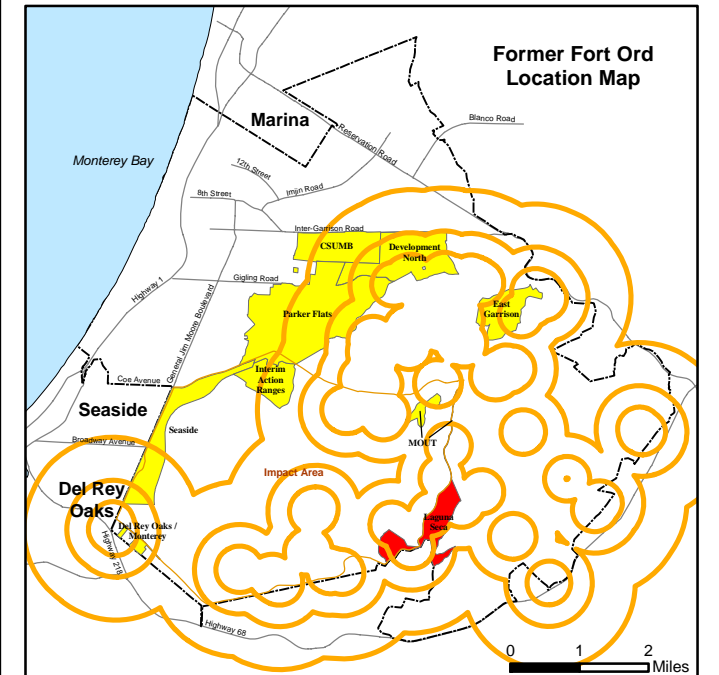


### Legend

- Munitions Response Area
- California Tiger Salamander Buffer
- Major Road
- Former Fort Ord Boundary
- Borderland Interface
- 200-Foot Buffer from Borderland Interface
- Aquatic Features

### Habitat Management Plan Category

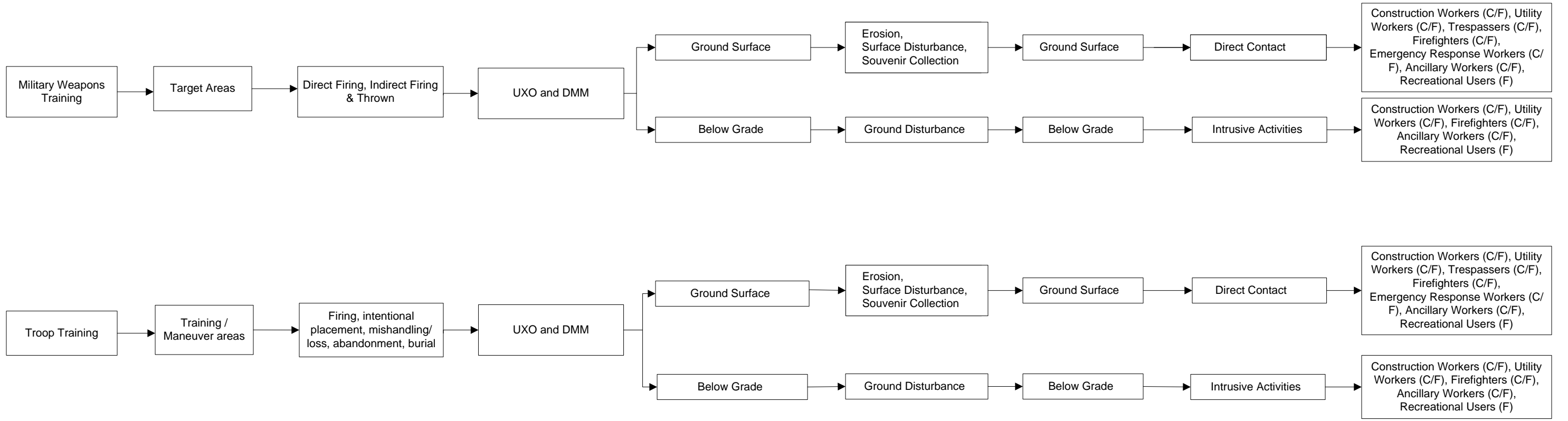
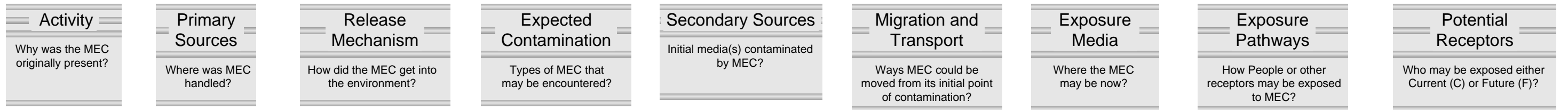
- Development (includes future Residential and Non-Residential areas)
- Development with Reserve or Restrictions
- Habitat Corridor
- Habitat Corridor with Development
- Habitat Reserve





**Laguna Seca MRA  
Ecological Profile  
Habitat Type**  
FORA ESCA RP  
Monterey County, California

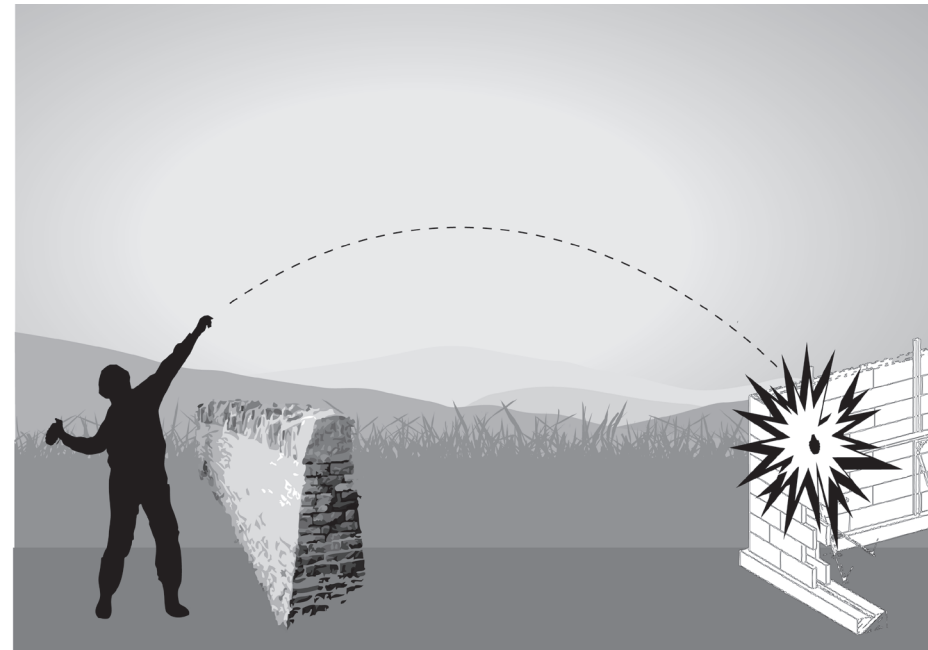
Figure 10.5-1





  <b>Westcliffe Engineers, Inc.</b>	<b>Laguna Seca MRA Pathway Analysis Flowchart</b>  <small>FORA ESCA RP Monterey County, California</small>
	<b>Figure 10.6-1</b>





Thrown Ordnance



Intentional Placement / Burial / Mishandling / Loss



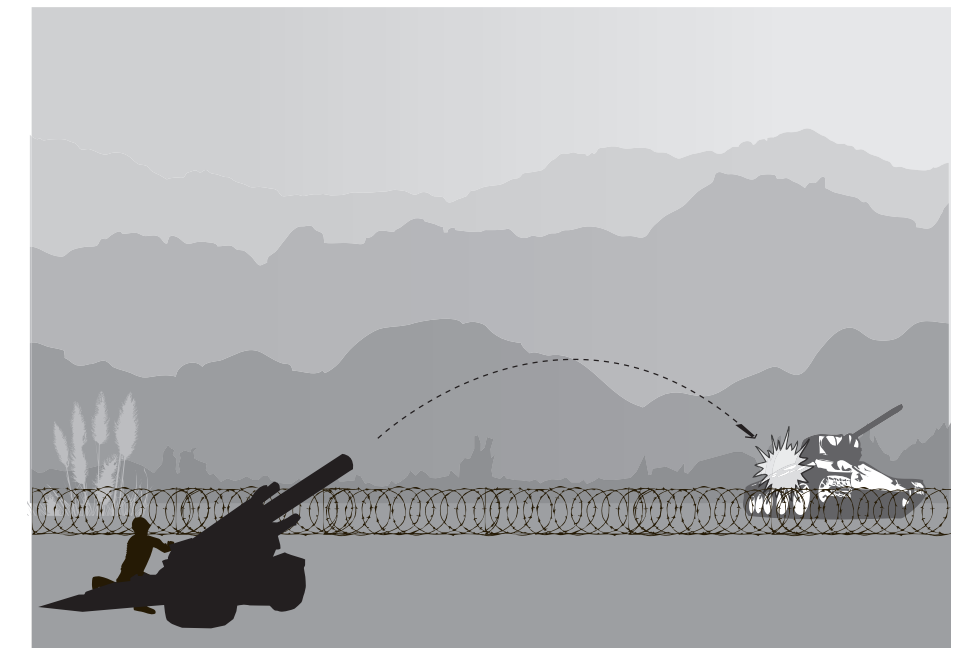
Firing



Direct Fire



Indirect Fire



Indirect Fire