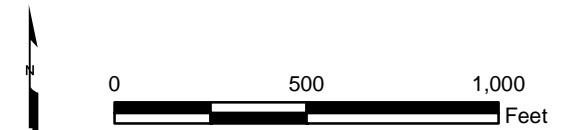
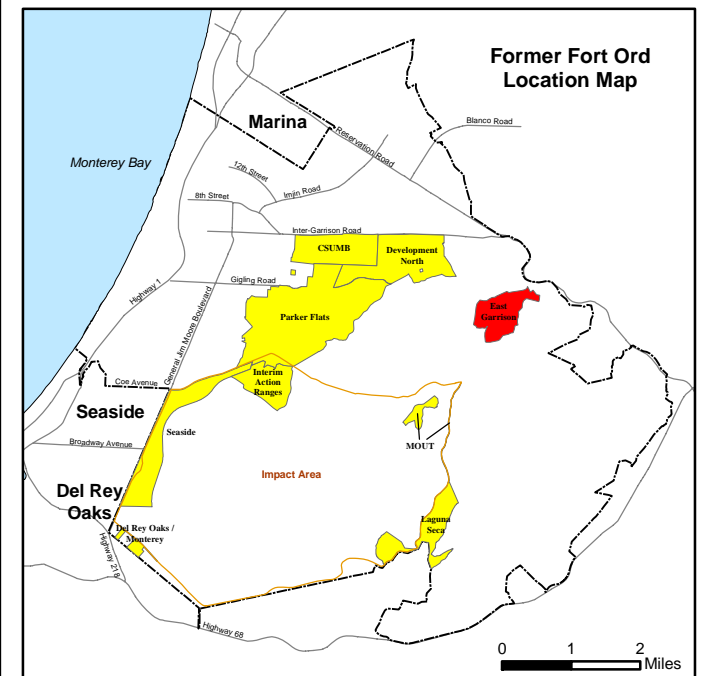


T:\Projects\SED\East Garrison\WXDs\12_1-1 Facility Profile Physical Features.mxd - 6/5/2008 @ 4:24:48 PM



Legend

- School
- Fire Station
- Gate
- Entry Forbidden Sign
- Sign
- Hydrant
- High-Power Transmission Line Tower
- Electrical Line Pole
- Munitions Response Area
- Major Road
- Electrical Line
- Fence
- Gas Line
- Storm Line
- Telephone Line
- Water Line
- Sewer Line
- High-Power Transmission Line and Right of Way
- R9211 Structure
- E23.1 USACE Parcel

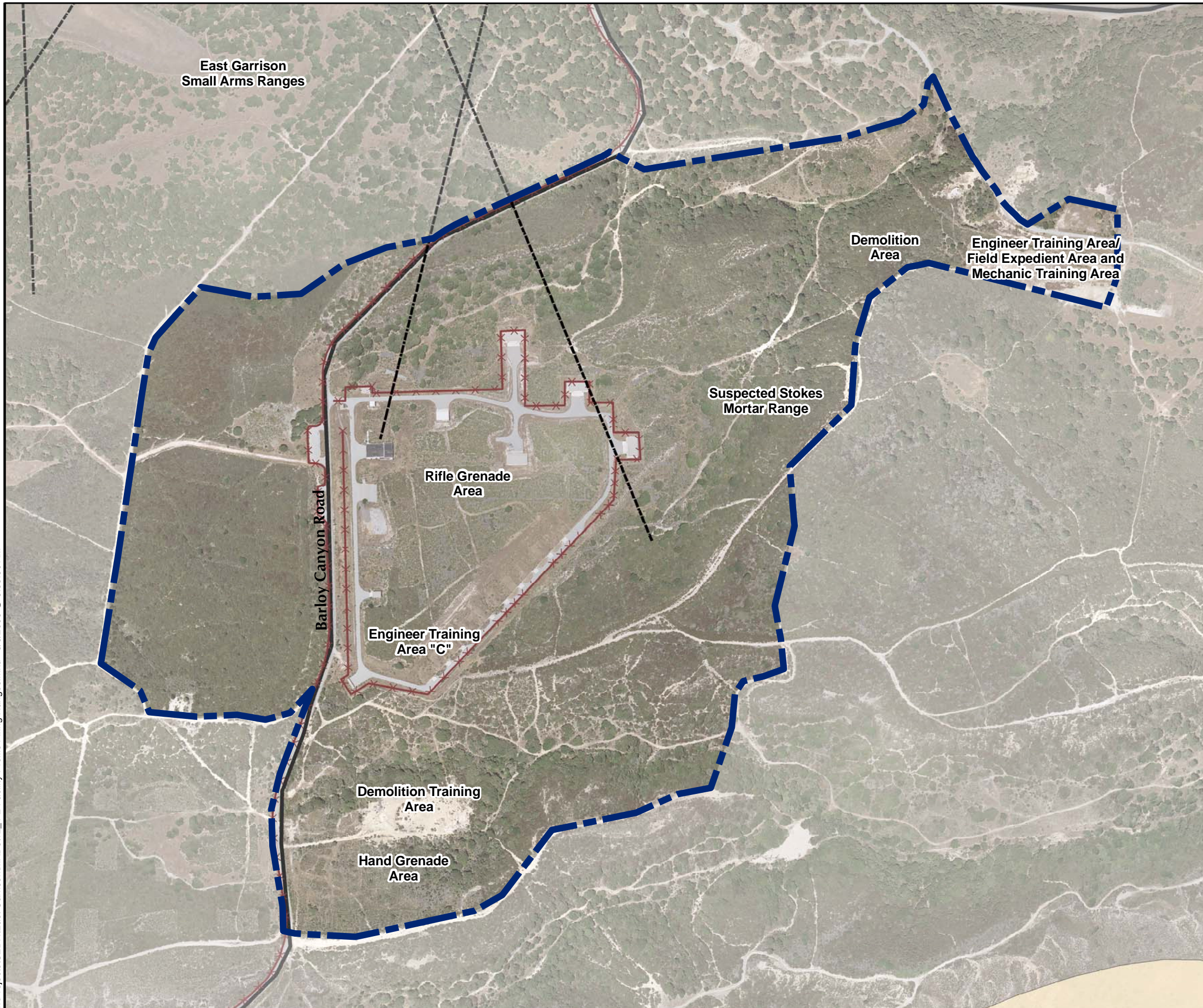


East Garrison MRA Facility Profile Physical Features

FORA ESCA RP
Monterey County, California

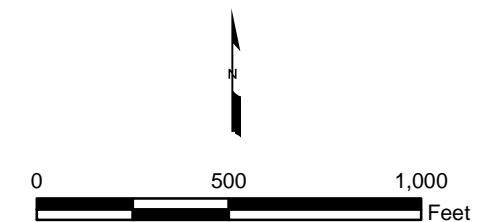
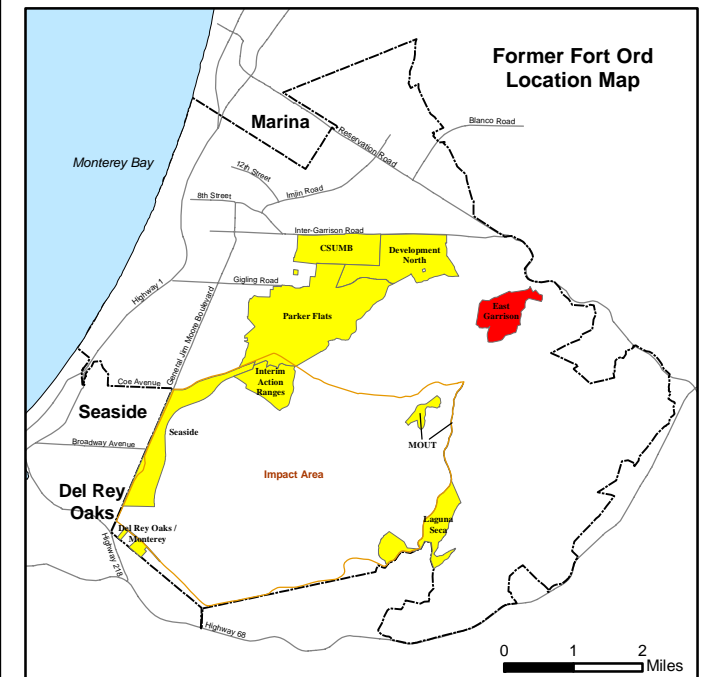
Figure 12.1-1

T:\Projects\SEDRI\East Garrison\MXD\12_1-2 Facility Profile Firing Ranges.mxd - 6/5/2008 @ 8:55:50 AM



Legend

- Training Site
- Munitions Response Area
- Major Road
- Fence

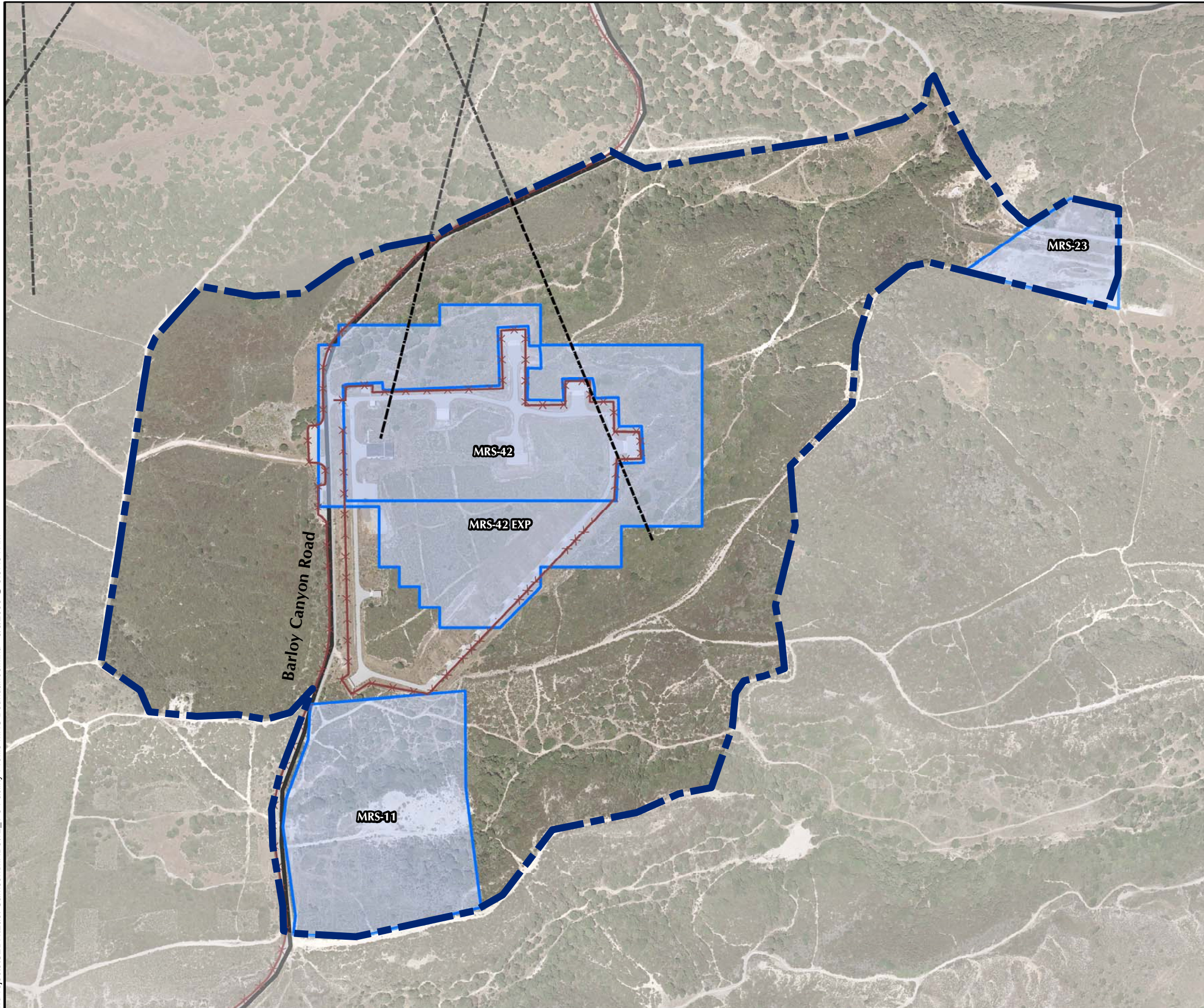




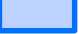
East Garrison MRA Facility Profile Ranges and Training Sites

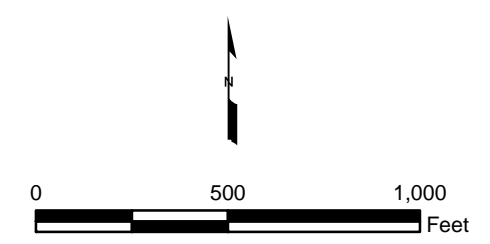
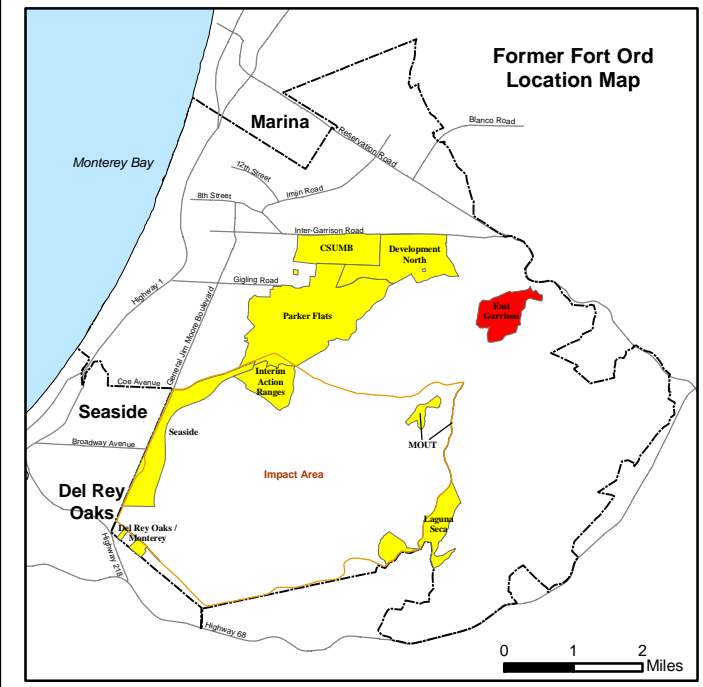
FORA ESCA RP
Monterey County, California

Figure 12.1-2

T:\Projects\SEDRI\East Garrison\MXD\12_1-3 Facility Profile MRS Boundaries.mxd - 6/5/2008 @ 8:57:34 AM



- ### Legend
-  Munitions Response Area
 -  Major Road
 -  Fence
 -  **MRS-42** Munitions Response Site

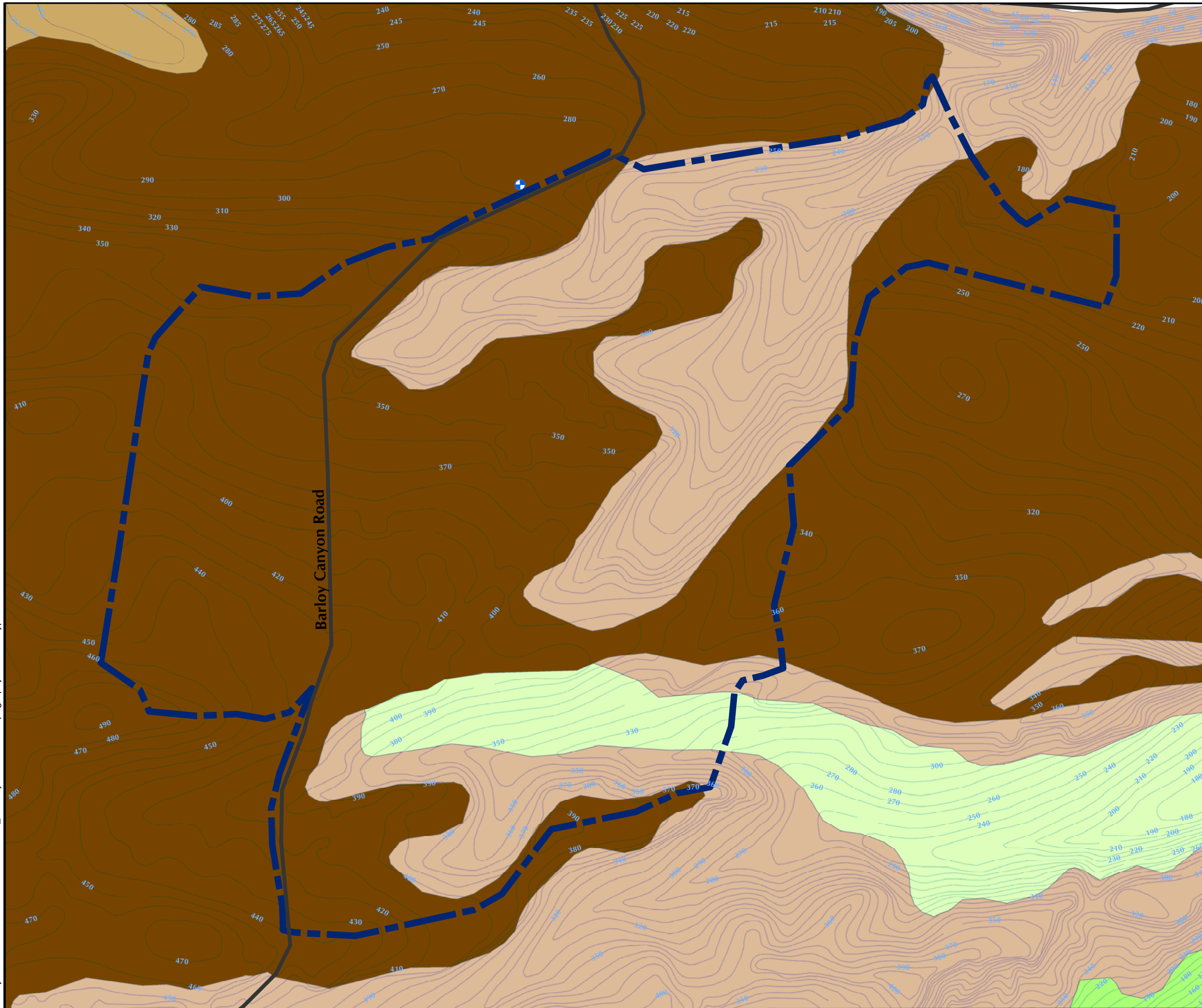


**East Garrison MRA Facility Profile
Munitions Response Site Boundaries**

FORA ESCA RP
Monterey County, California

Figure 12.1-3

T:\Projects\SED\East Garrison\MXD\12_2-1 Physical Profile Topography and Soil Type.mxd - 6/5/2008 @ 3:36:07 PM

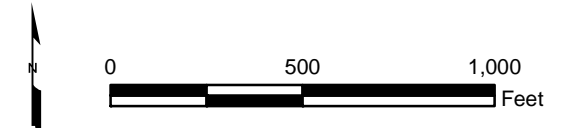
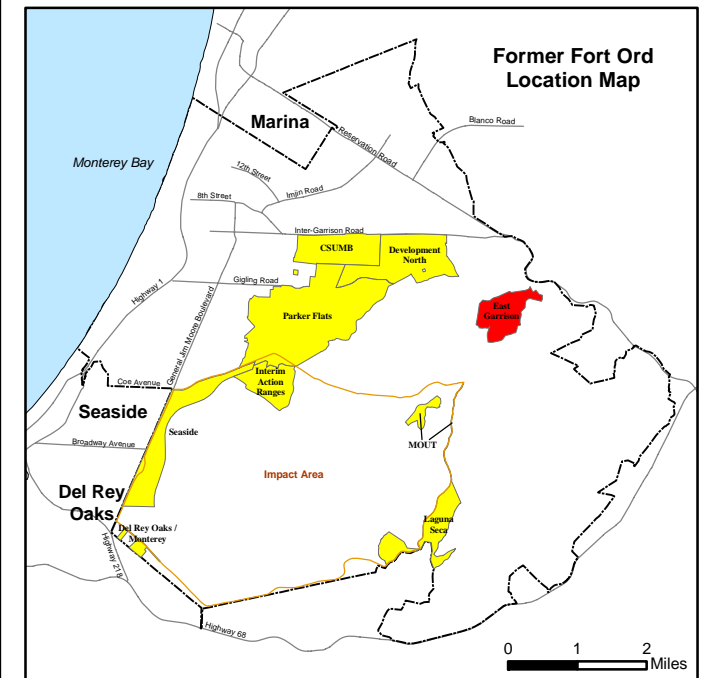


Legend

- Environmental Well
- Abandoned Well
- Water Supply Well
- Munitions Response Area
- Major Road
- 540 Topography 10 ft

Soil Type

- Arnold-Santa Ynez Complex
- Xerorthents, Dissected
- Arnold Loamy Sand, 15 to 50 Percent Slopes
- Arnold Loamy Sand, 9 to 15 Percent Slopes
- Santa Ynez Fine Sandy Loam, 15 to 30 Percent Slopes
- Antioch Very Fine Sandy Loam, 2 to 9 Percent Slopes

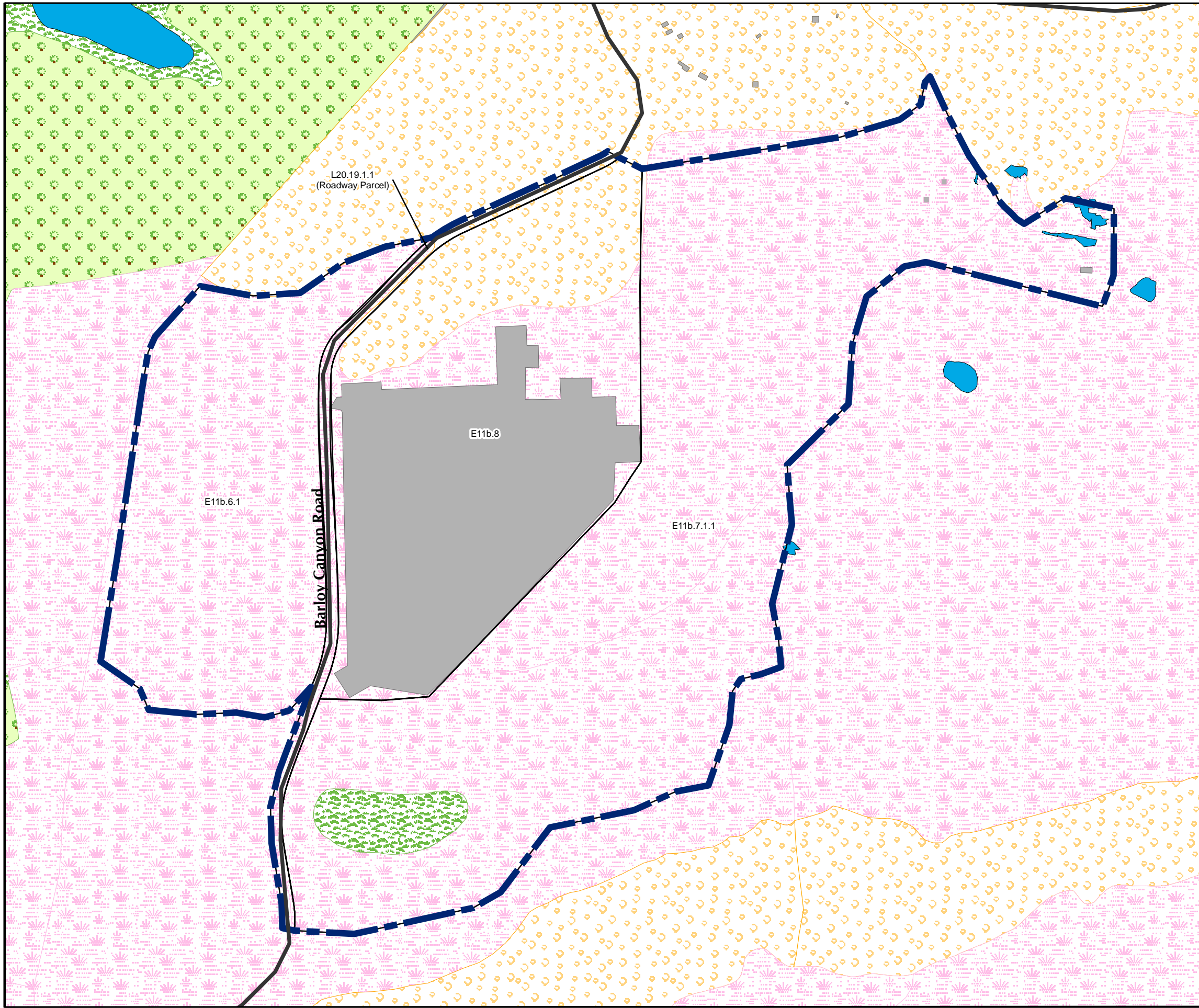


East Garrison MRA Physical Profile Topography and Soil Type

FORA ESCA RP
Monterey County, California

Figure 12.2-1

T:\Projects\SEDRI\East Garrison\MXD\12_2-2 Facility Profile Vegetation Communities.mxd - 6/5/2008 @ 4:39:16 PM



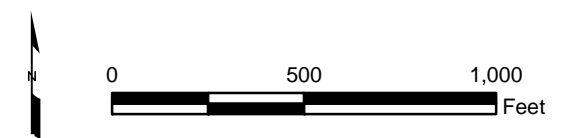
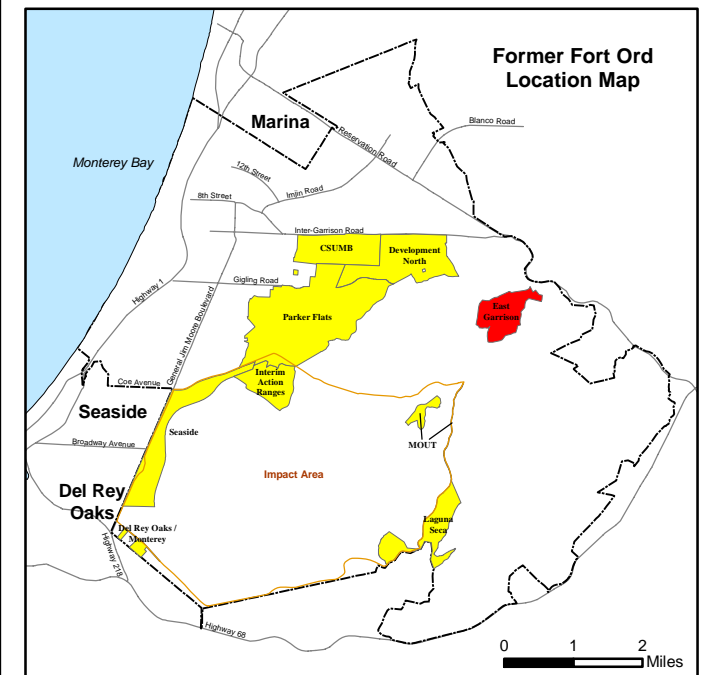
Legend

- Munitions Response Area
- Major Road
- USACE Parcel

Vegetation Type

- Grassland
- Maritime Chaparral
- Inland Coast Live Oak Woodland
- Coastal Coast Live Oak Woodland
- Aquatic Feature
- Developed / Disturbed

Source: Flora and Fauna Baseline Study of Fort Ord, California, Jones and Stokes Association Inc., December 1992.

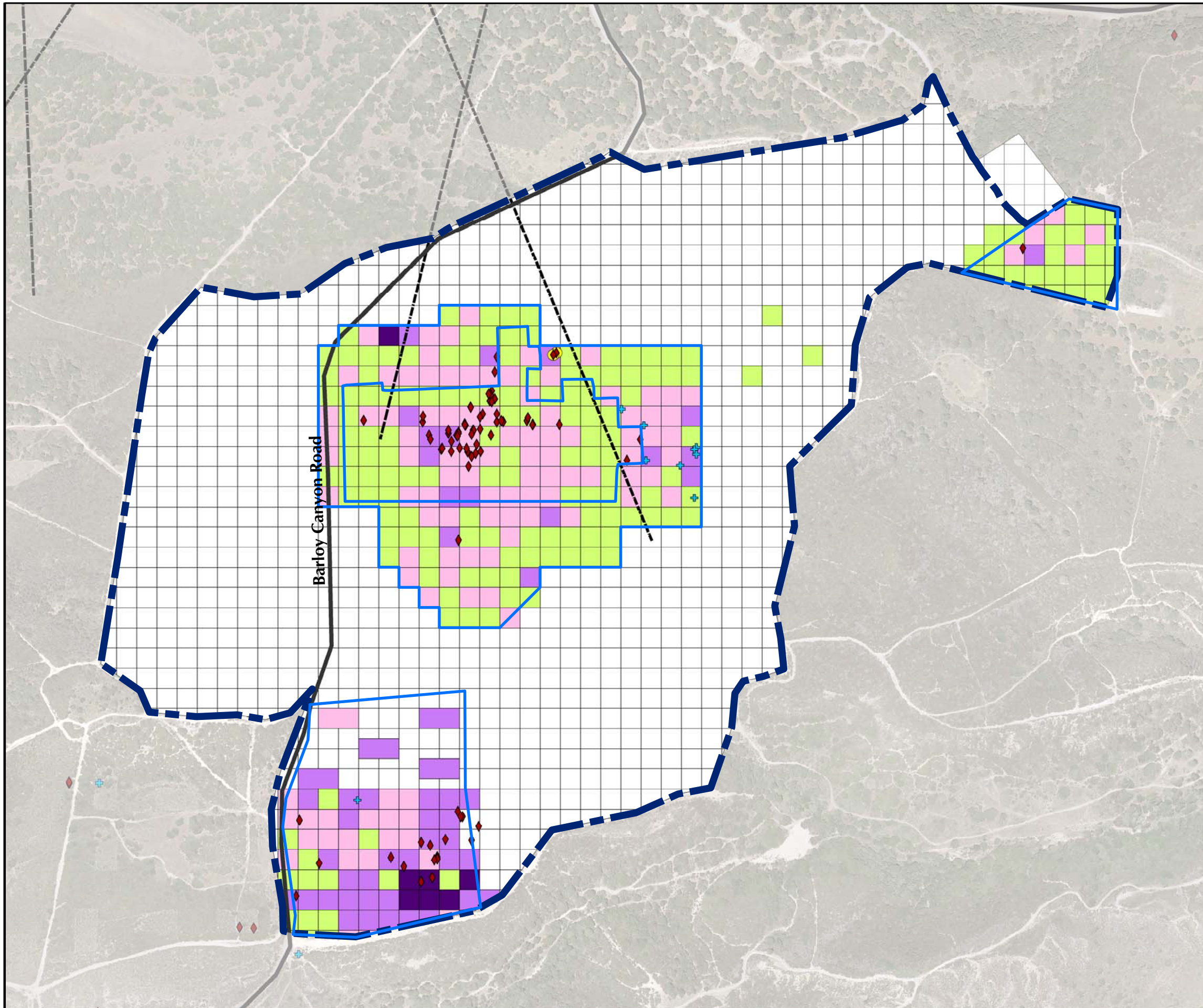


**East Garrison MRA Physical Profile
Generalized Vegetation Communities**

FORA ESCA RP
Monterey County, California

Figure 12.2-2

T:\Projects\SEDREast Garrison\MXDs\12_3-1 Release Profile MEC and MD Locations.mxd - 6/5/2008 @ 9:18:20 AM



Legend

- Munitions Response Area
- Firing Range
- Munitions Response Site
- Major Road

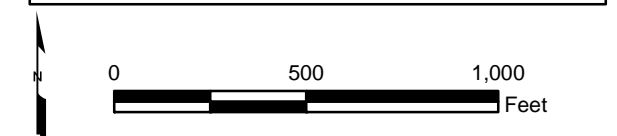
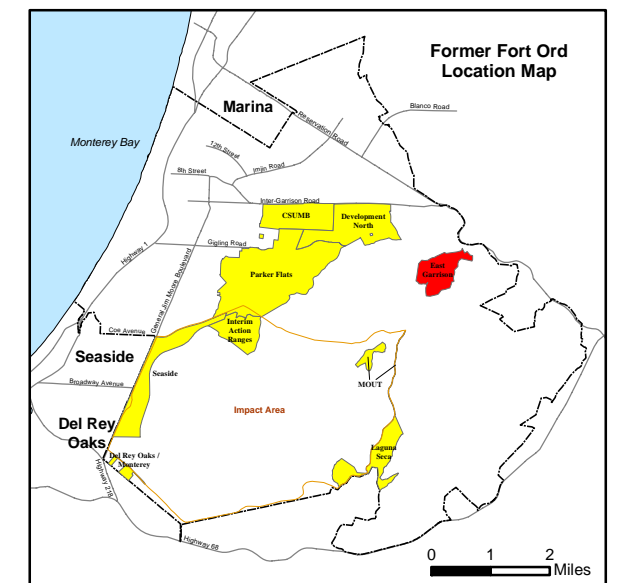
MEC Type

- Unexploded Ordnance (UXO)
- Discarded Military Munition (DMM)
- Insufficient Data (ISD)
- Burial Pit Containing MEC

Munitions Debris (MD) by Weight (total pounds per grid)

- No Data
- 0
- < 10
- 10 to 100
- > 100

Note: Munitions Debris (MD) includes scrap related to small arms ammunition.

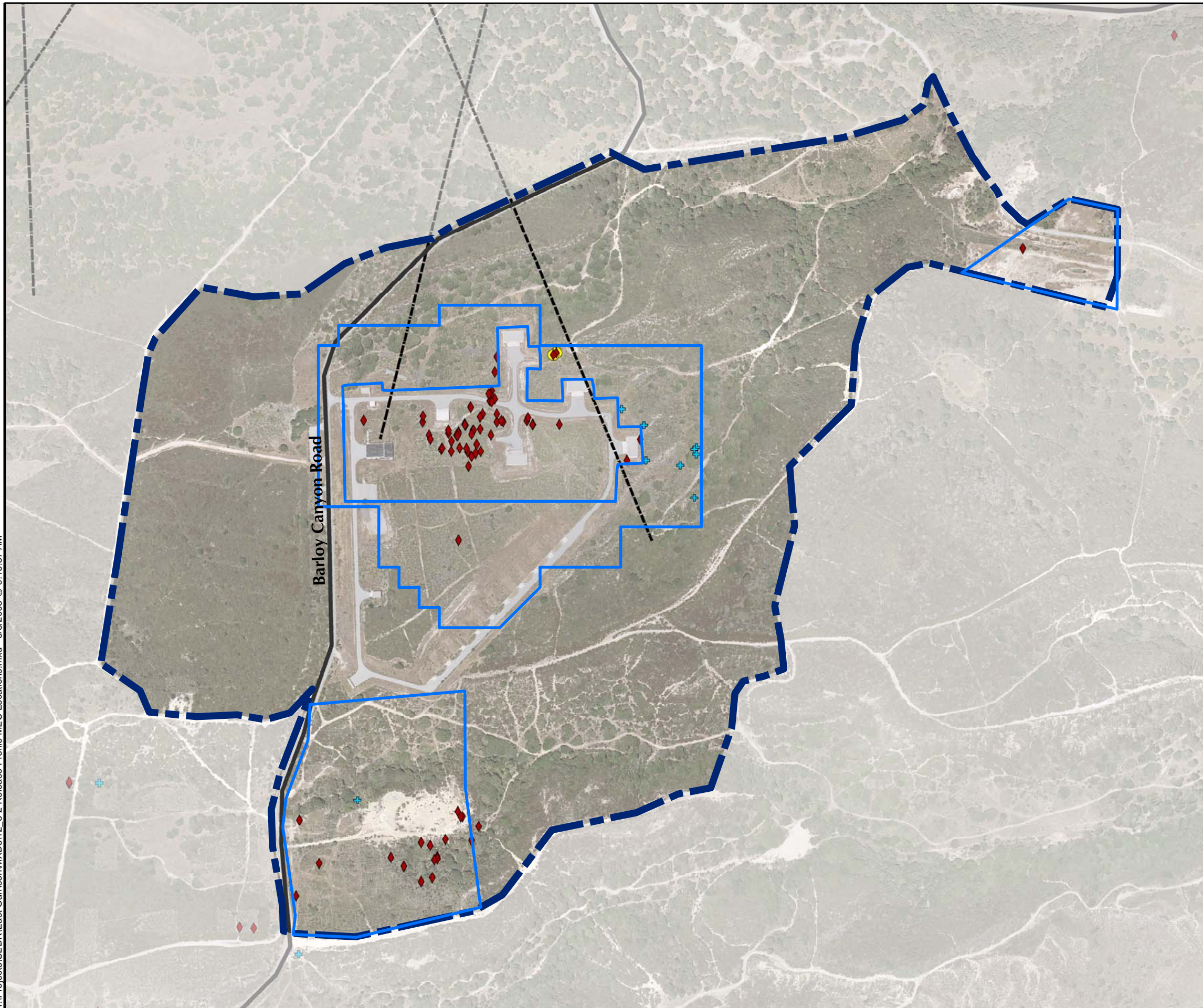


East Garrison MRA Release Profile MEC and MD Locations

FORA ESCA RP
Monterey County, California

Figure 12.3-1

T:\Projects\SEDR\East GarrisonMXDs\12_3-2 Release Profile MEC Locations.mxd - 6/5/2008 @ 9:16:37 AM



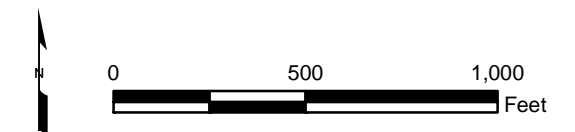
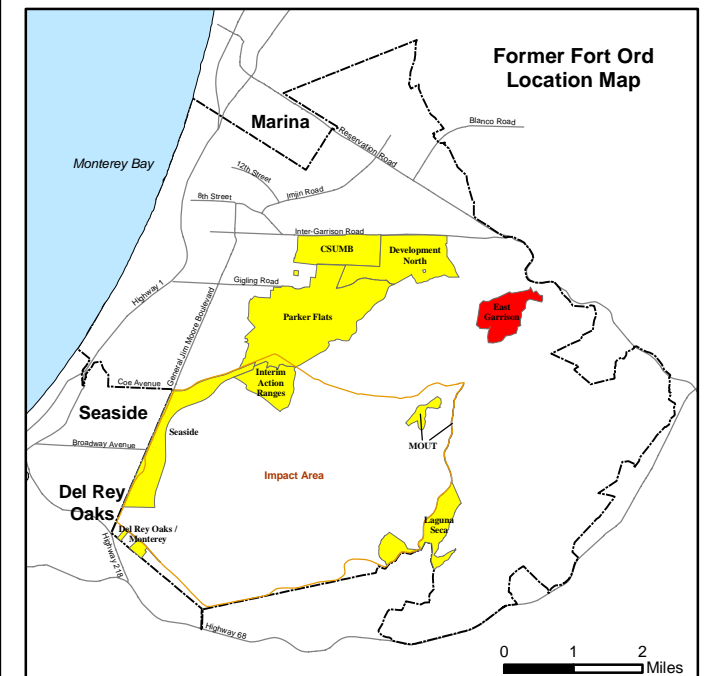
Legend

- - - - Munitions Response Area
- _ _ _ _ Munitions Response Site
- - - - Firing Range
- _ _ _ _ Major Road

MEC Type

- ◆ Unexploded Ordnance (UXO)
- ▲ Discarded Military Munition (DMM)
- + Insufficient Data (ISD)
- Burial Pit Containing MEC

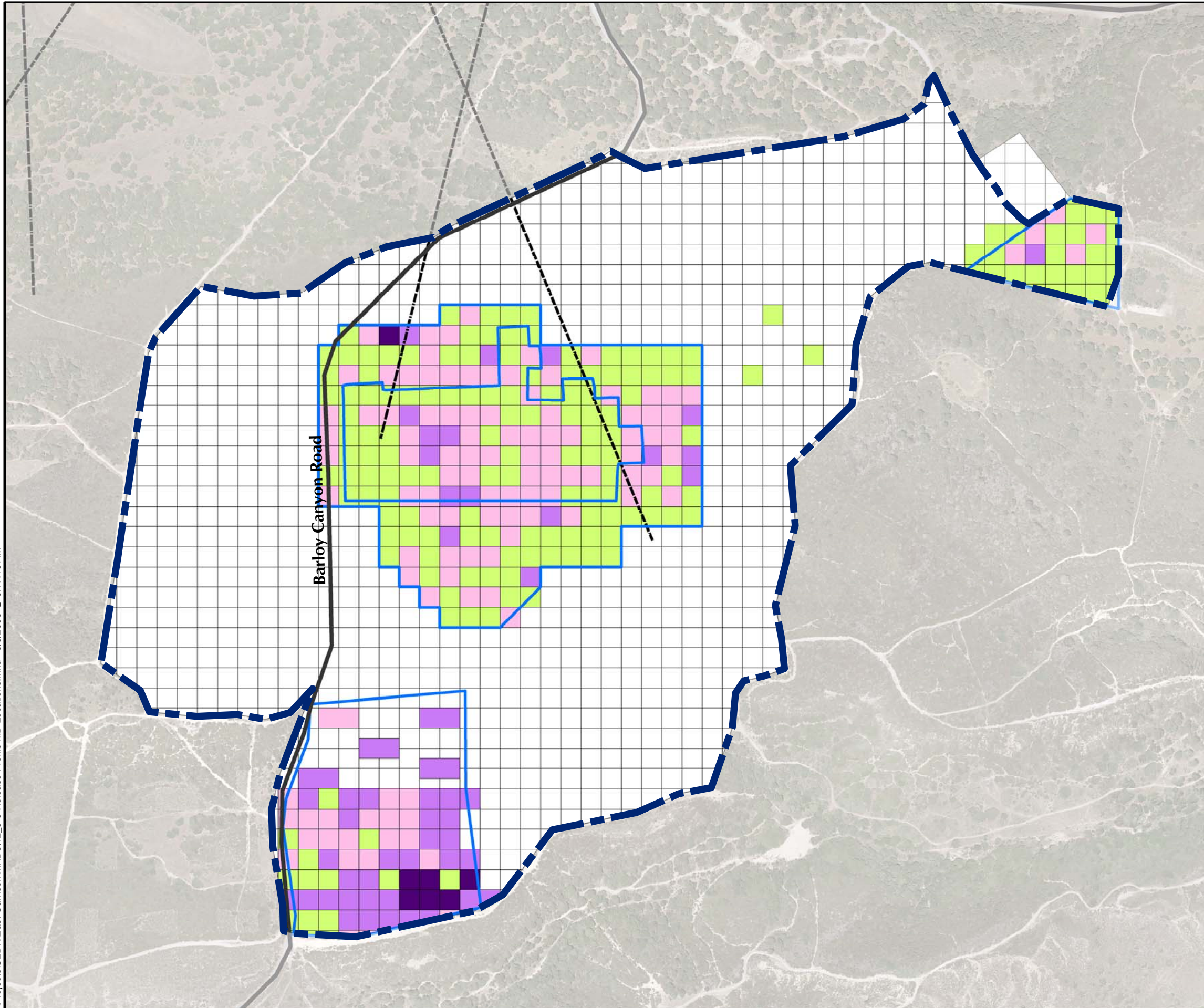
Note: MEC locations may include more than one item.



**East Garrison MRA Release Profile
MEC Locations**
FORA ESCA RP
Monterey County, California

Figure 12.3-2

T:\Projects\SEDR\East Garrison\MXDs\12_3-3 Release Profile MD Locations.mxd - 6/5/2008 @ 9:17:16 AM



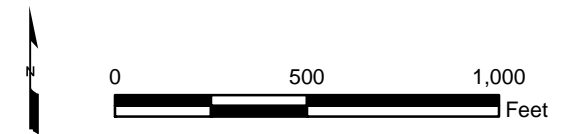
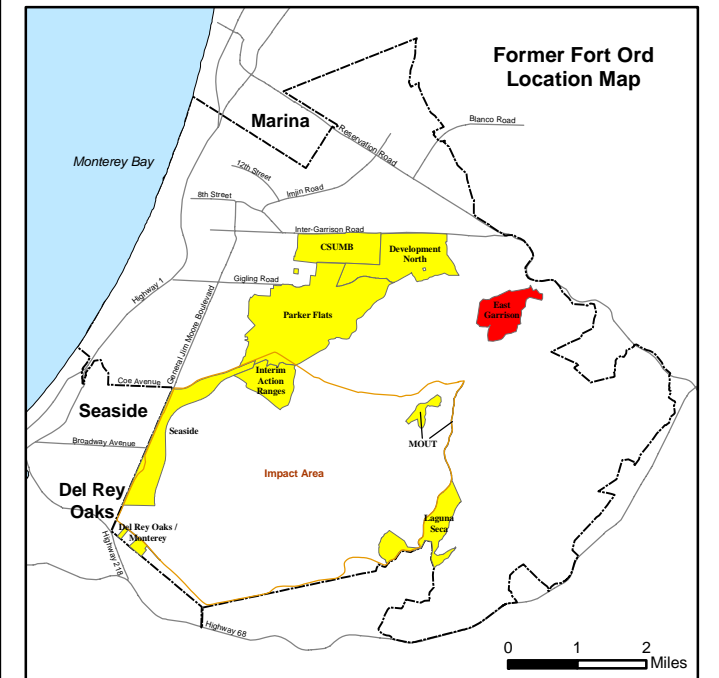
Legend

- Munitions Response Area
- Munitions Response Site
- Firing Range
- Major Road

Munitions Debris (MD) by Weight (total pounds per grid)

- No Data
- 0
- < 10
- 10 to 100
- > 100

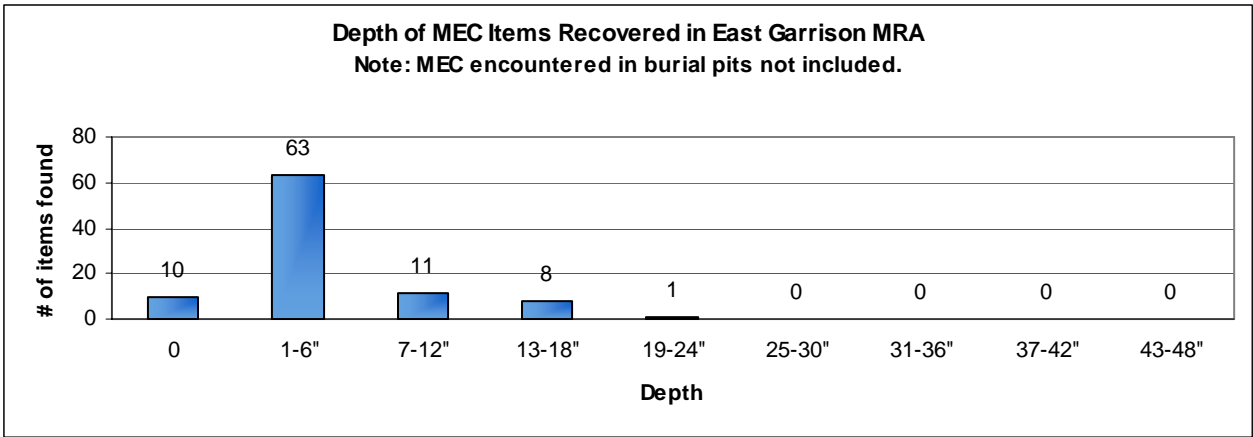
Note: Munitions Debris (MD) includes scrap related to small arms ammunition.



East Garrison MRA Release Profile MD Locations

FORA ESCA RP
Monterey County, California

Figure 12.3-3



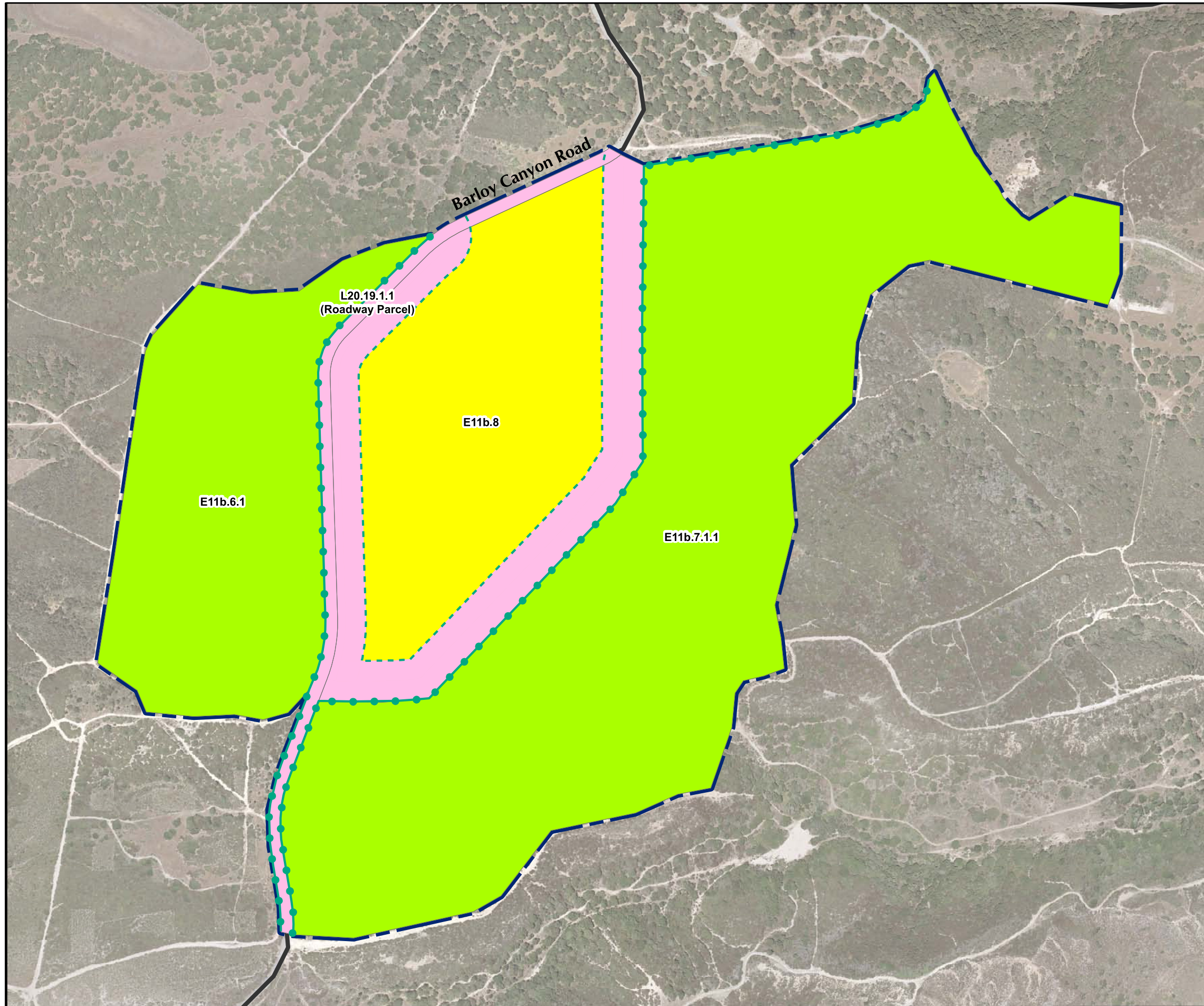
**Westcliffe
 Engineers, Inc.**

**East Garrison MRA
 Distribution of MEC
 Recovered by Depth Interval**



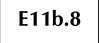
FORA ESCA RP
 Monterey County, California

Figure 12.3-4






T:\Projects\SEDR\East Garrison\MXDs\12_4-1 Land Use Profile Reuse Plan.mxd - 6/5/2008 @ 4:59:12 PM

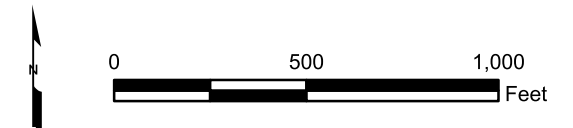
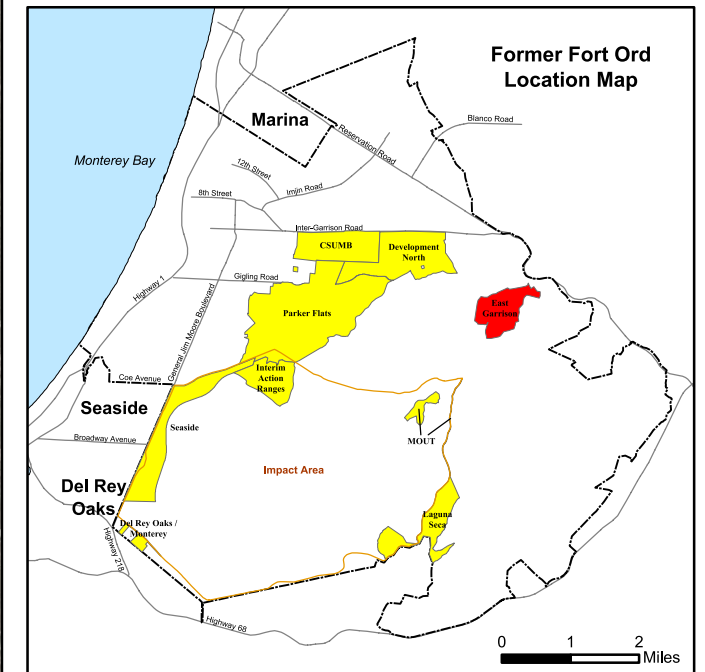


Legend

-  Munitions Response Area
-  Major Road
-  USACE Parcel

Future Land Use

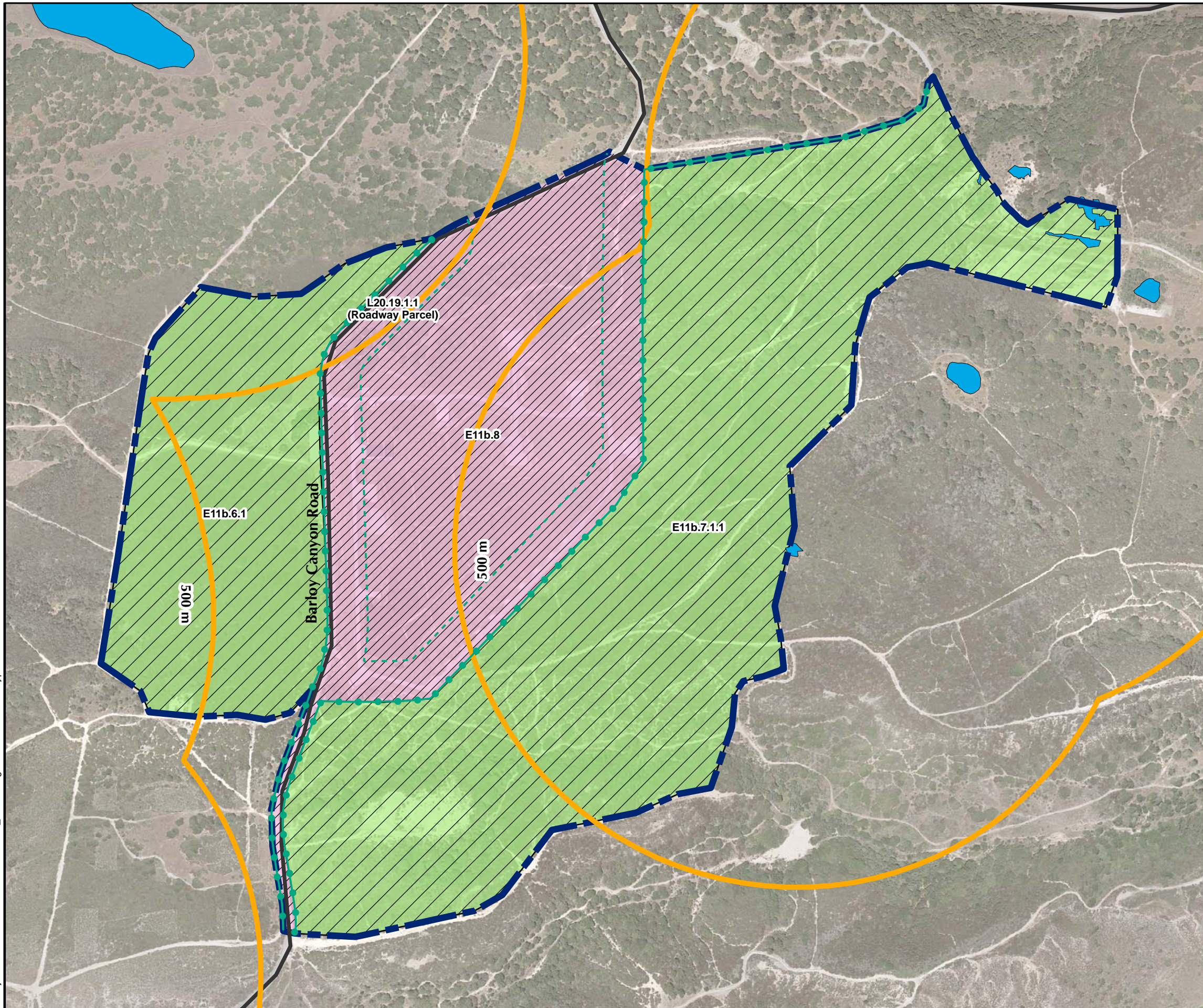
-  Residential
-  Non-Residential
-  Habitat Reserve
-  Borderland Interface
-  200-Foot Buffer from Borderland Interface









**East Garrison MRA
Land Use Profile
Reuse Plan**
FORA ESCA RP
Monterey County, California

Figure 12.4-1

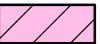

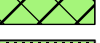


T:\Projects\SED\East Garrison\MXD\12_5-1 Ecological Profile Habitat Type.mxd - 6/5/2008 @ 11:48:30 AM

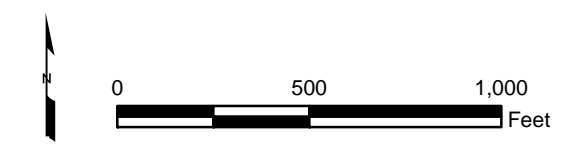
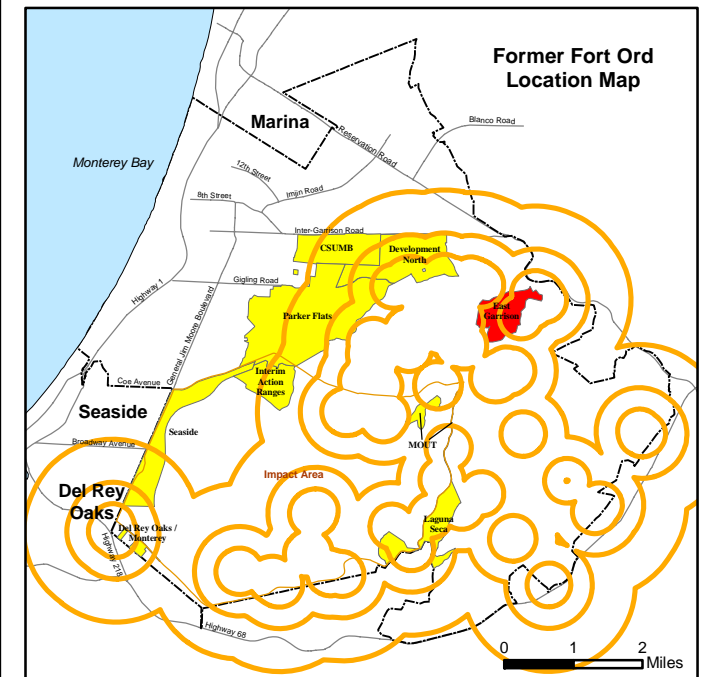




Legend

-  Munitions Response Area
-  California Tiger Salamander Buffer
-  Major Road
-  Borderland Interface
-  200-Foot Buffer from Borderland Interface
-  Aquatic Features

Habitat Management Plan Category

-  Development (includes future Residential and Non-Residential areas)
-  Development with Reserve or Restrictions
-  Habitat Corridor
-  Habitat Corridor with Development
-  Habitat Reserve



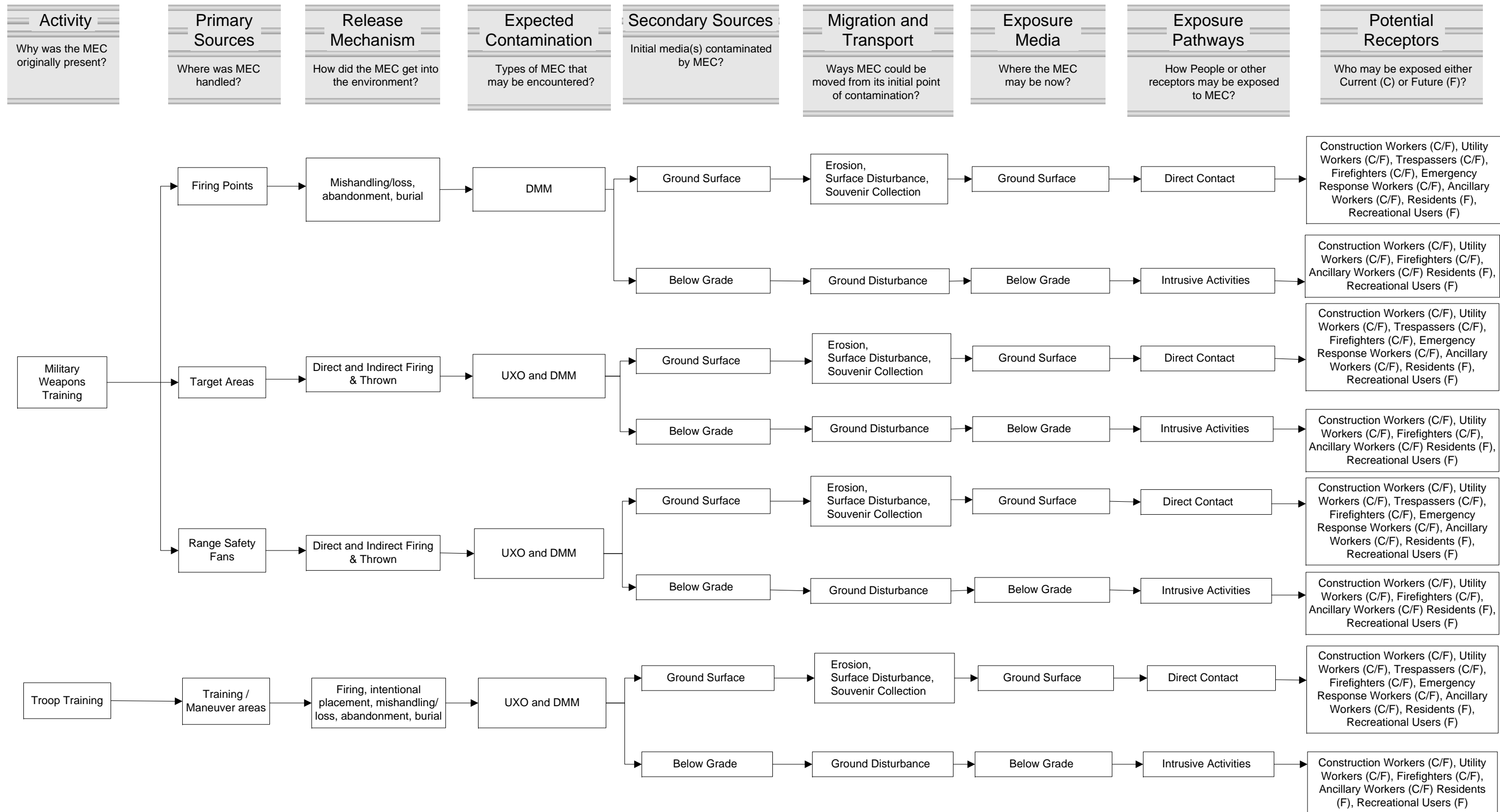





Westcliffe
Engineers, Inc.

**East Garrison MRA
Ecological Profile
Habitat Type**

FORA ESCA RP
Monterey County, California

Figure 12.5-1



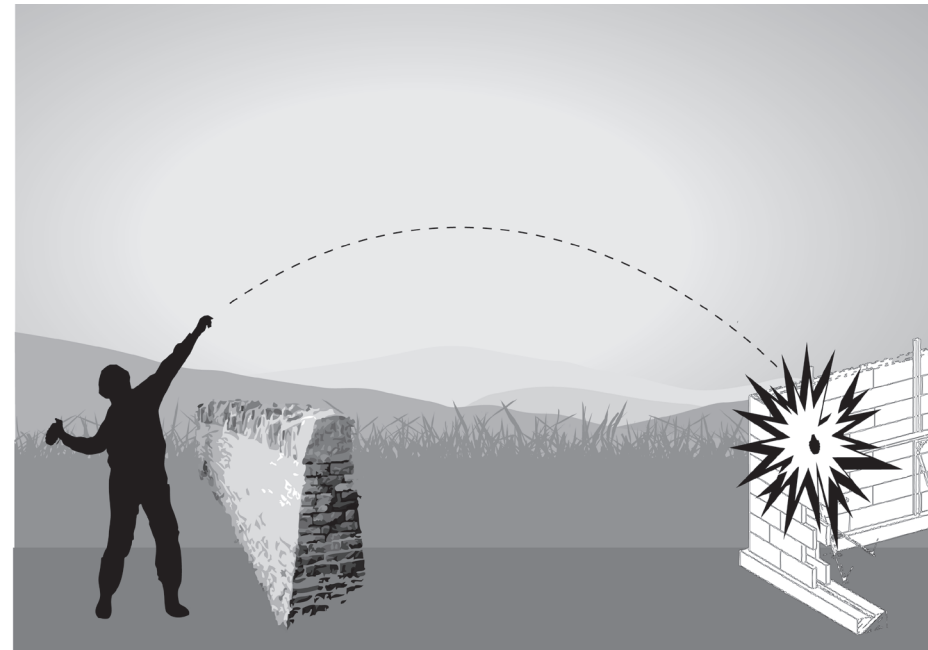



Westcliffe Engineers, Inc.

**East Garrison MRA
Pathway Analysis Flowchart**

FORA ESCA RP
Monterey County, California

Figure 12.6-1



Thrown Ordnance



Intentional Placement / Burial / Mishandling / Loss



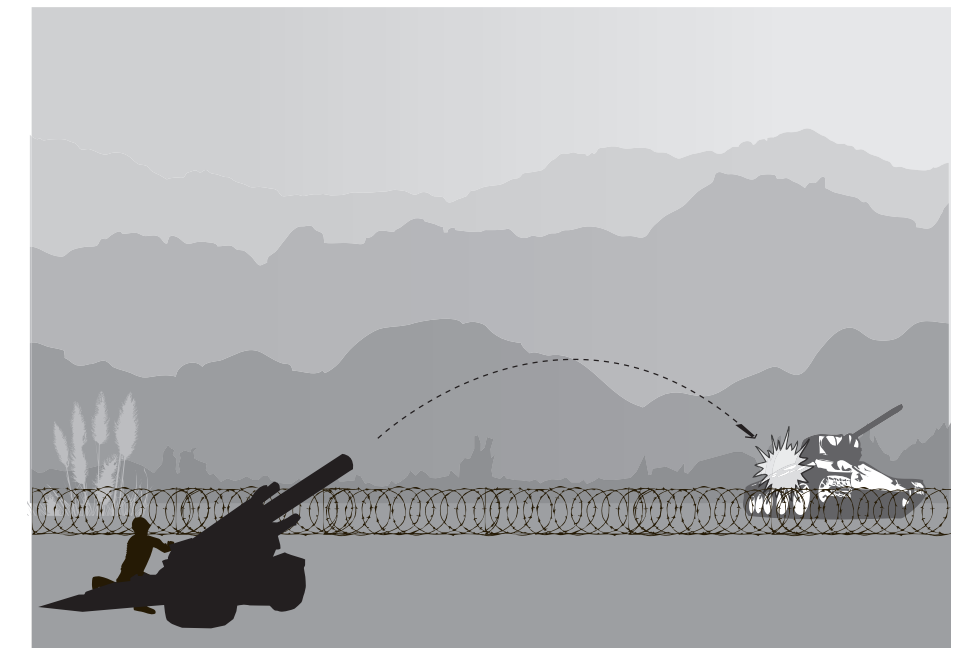
Firing



Direct Fire



Indirect Fire



Indirect Fire