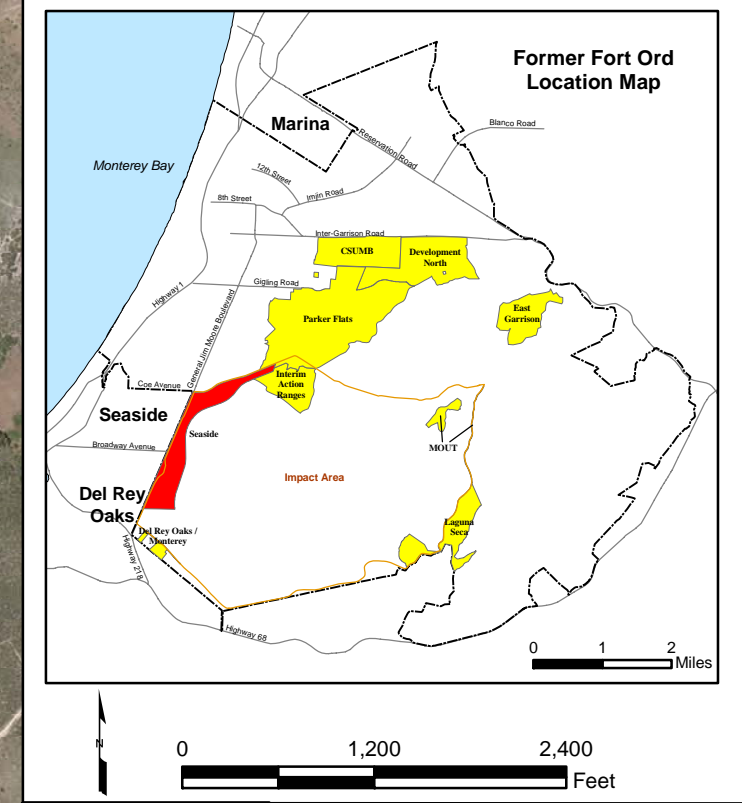
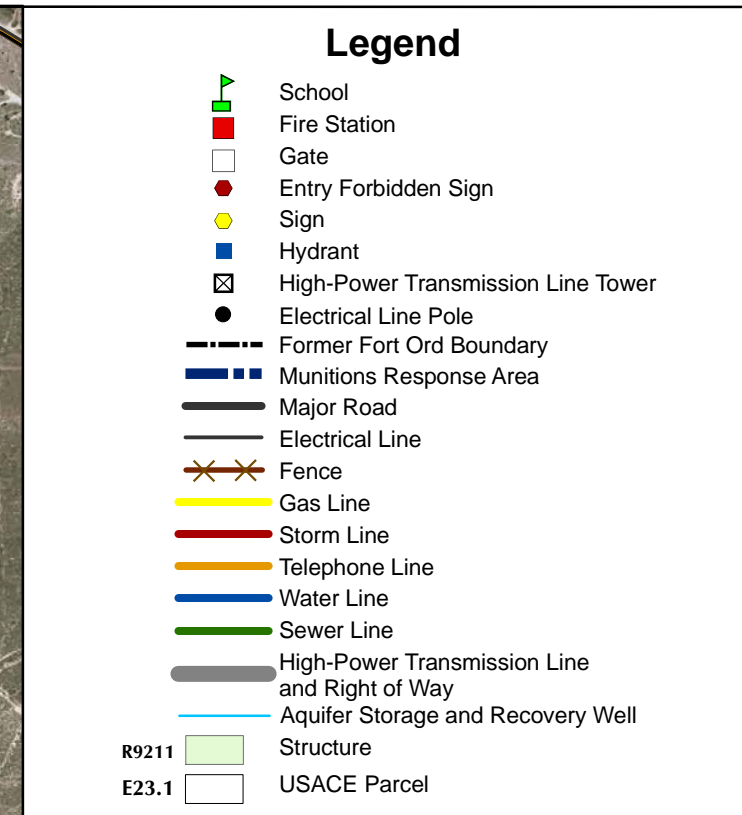


T:\Projects\SEDR\Seaside\MXDsv4_1-1 Facility Profile Physical Features.mxd - 6/3/2008 @ 3:41:58 PM



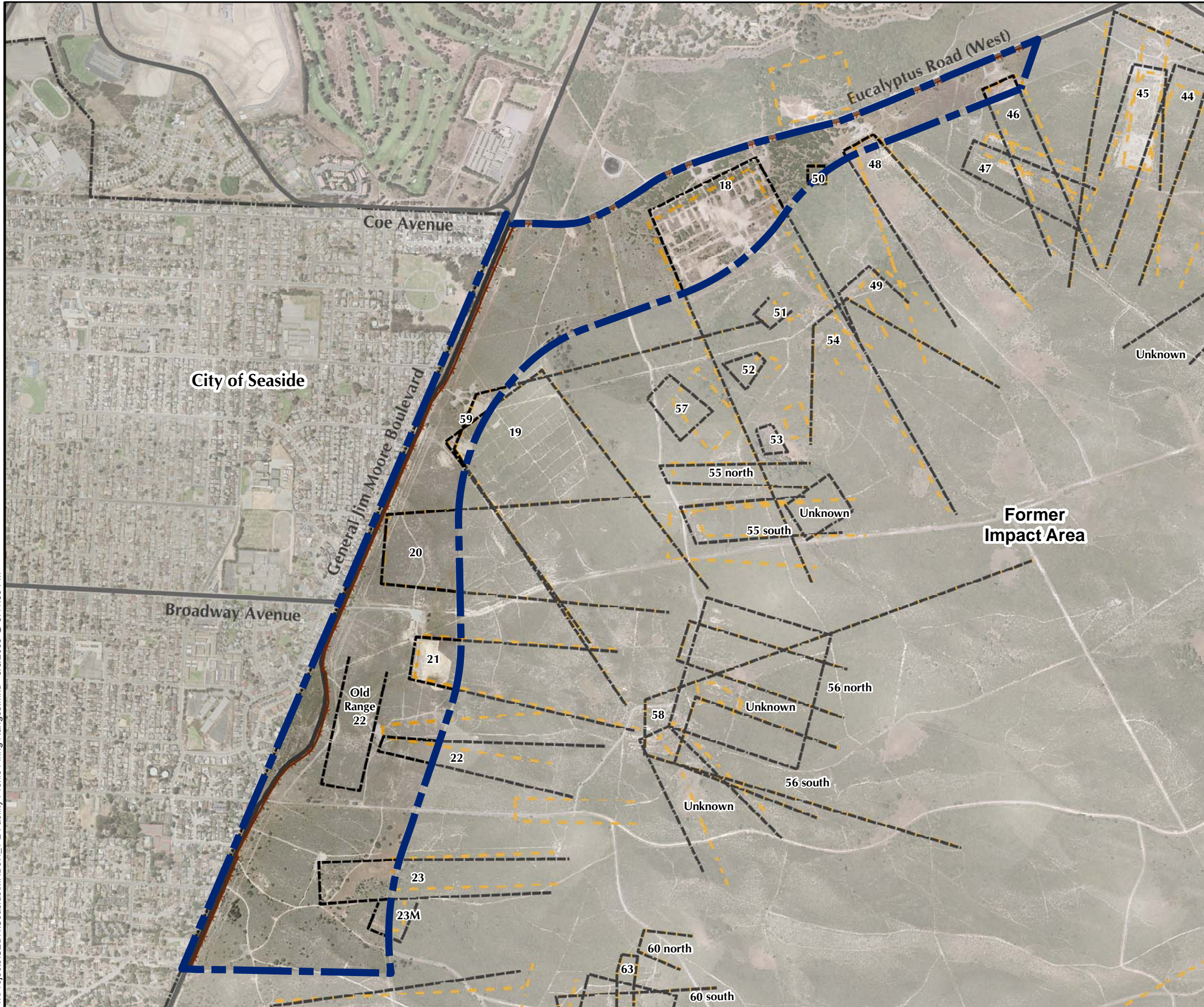
Westcliffe
Engineers, Inc.

Seaside MRA Facility Profile Physical Features

FORA ESCA RP
Monterey County, California

Figure 4.1-1

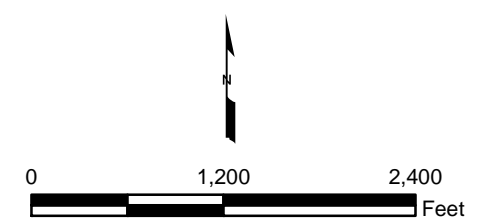
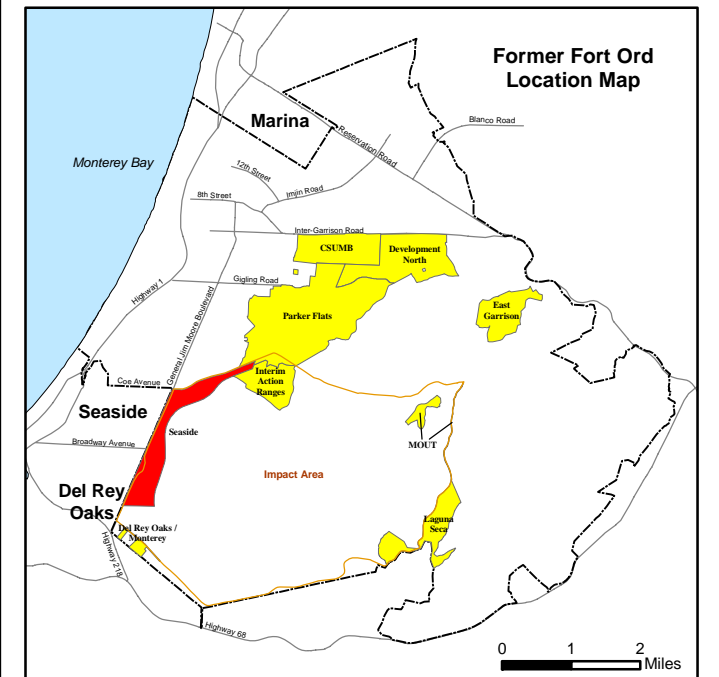
T:\Projects\SEDR\Seaside\MXD\4_1-2 Facility Profile Firing Ranges.mxd - 6/3/2008 @ 3:41:58 PM



Legend

- Munitions Response Area
- Firing Range
- Historical Range
- Major Road
- Fence
- Former Fort Ord Boundary

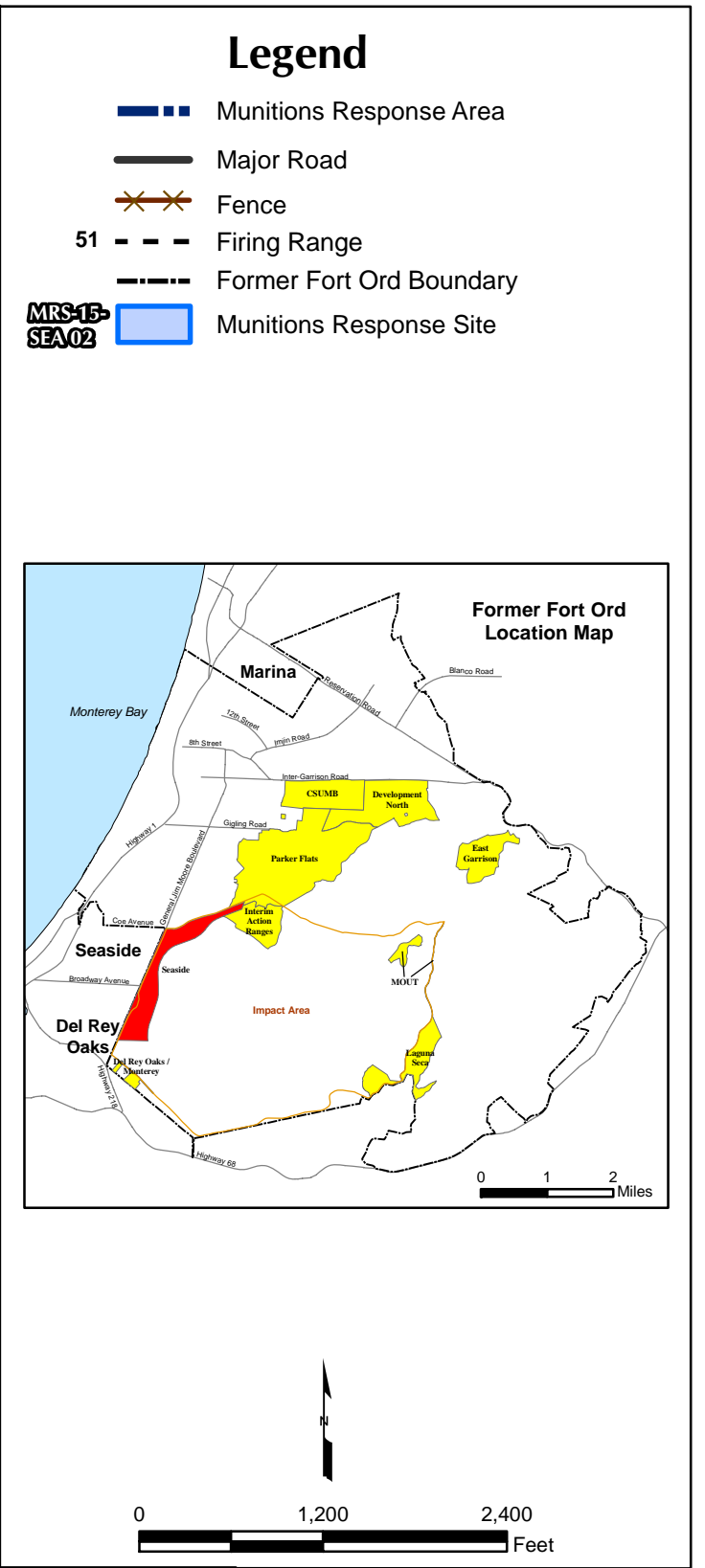
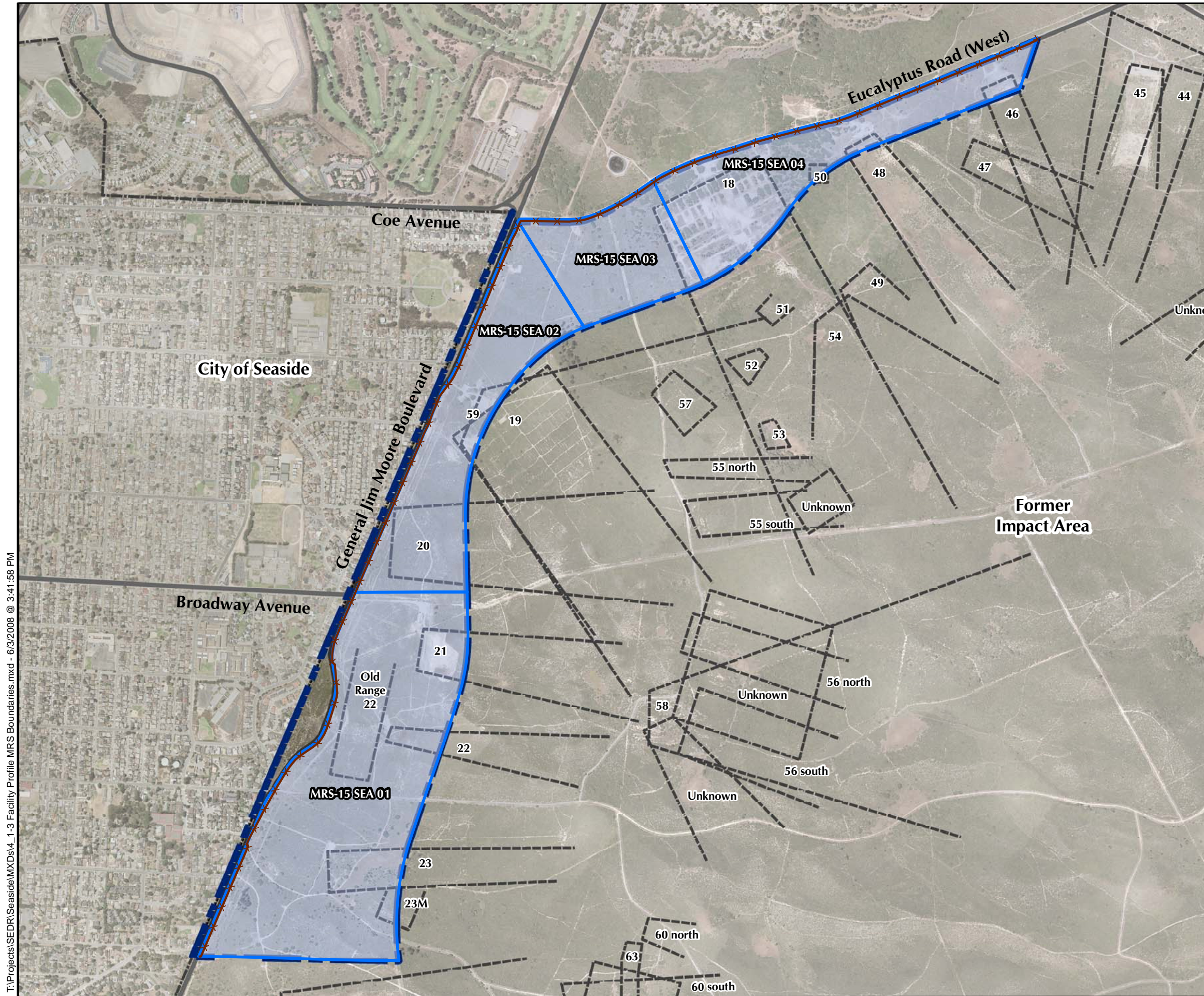
Note: Ranges 18, 19, 21, 22, 46 and 59 were reportedly used for small arms ammunition training only.





Seaside MRA Facility Profile Ranges and Training Sites

FORA ESCA RP
Monterey County, California

Figure 4.1-2



T:\Projects\SEDR\Seaside\MXDs\4_1-3 Facility Profile MRS Boundaries.mxd - 6/9/2008 @ 3:41:58 PM

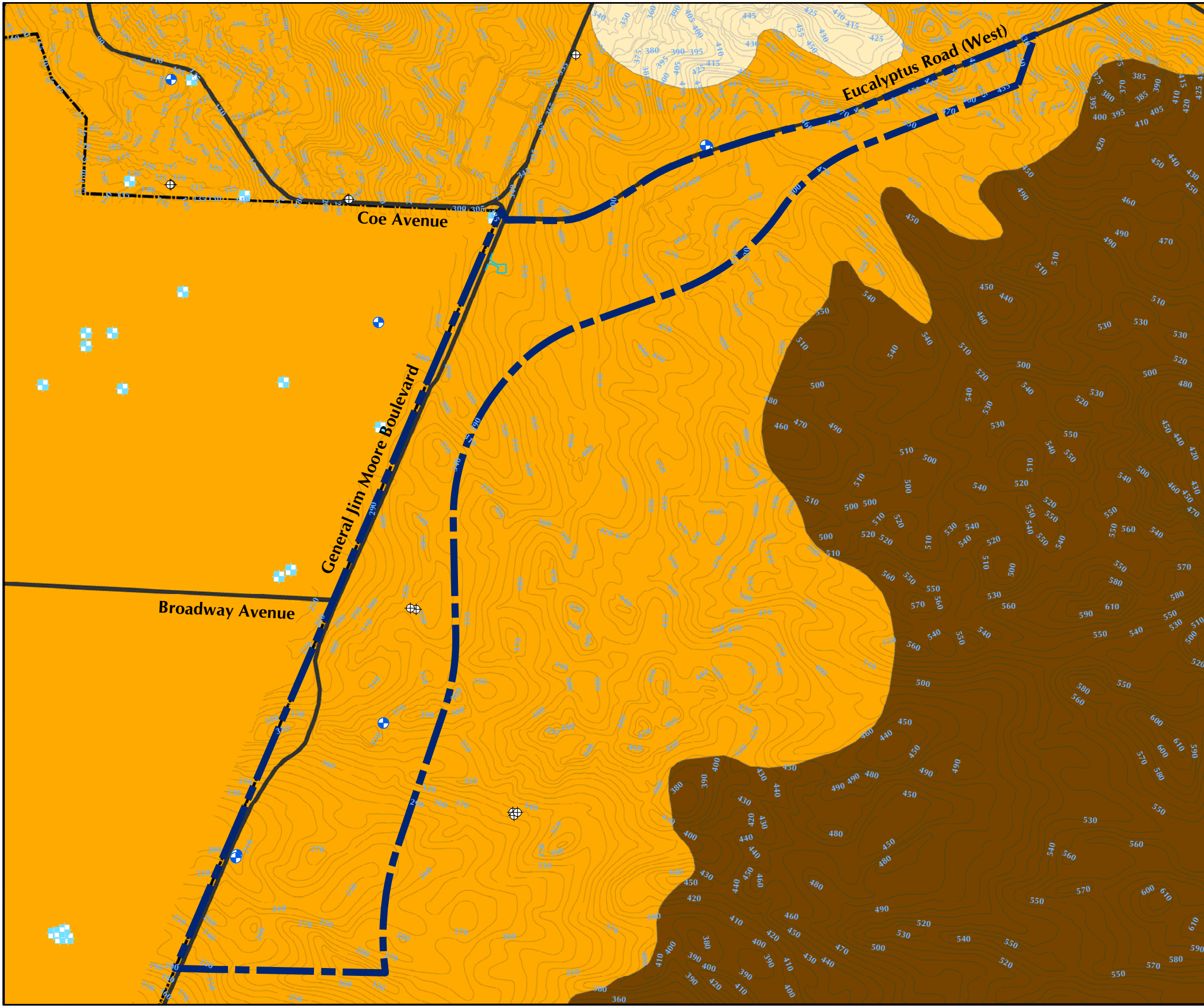
Westcliffe
Engineers, Inc.

**Seaside MRA Facility Profile
Munitions Response Site Boundaries**

FORA ESCA RP
Monterey County, California

Figure 4.1-3

T:\Projects\SEDR\Seaside\MXD\4_2-1 Physical Profile Topography and Soil Type.mxd - 6/3/2008 @ 4:00:37 PM

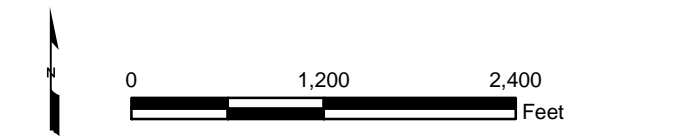
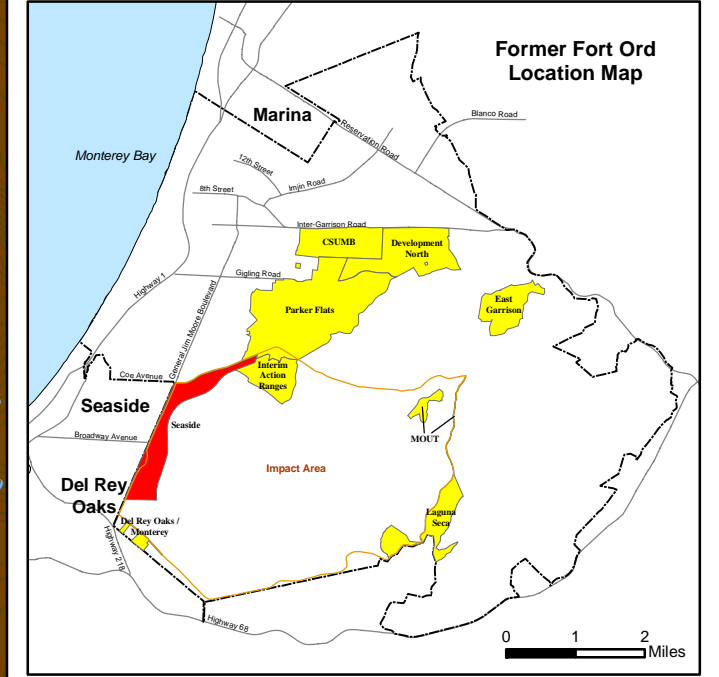


Legend

- Environmental Well
- Abandoned Well
- Water Supply Well
- Aquifer Storage and Recovery Well
- Topography 5 ft and 10 ft
- Munitions Response Area
- Major Road
- Former Fort Ord Boundary

Soil Type

- Arnold-Santa Ynez Complex
- Baywood Sand, 2 to 15 Percent Slopes
- Oceano Loamy Sand, 2 to 15 Percent Slopes

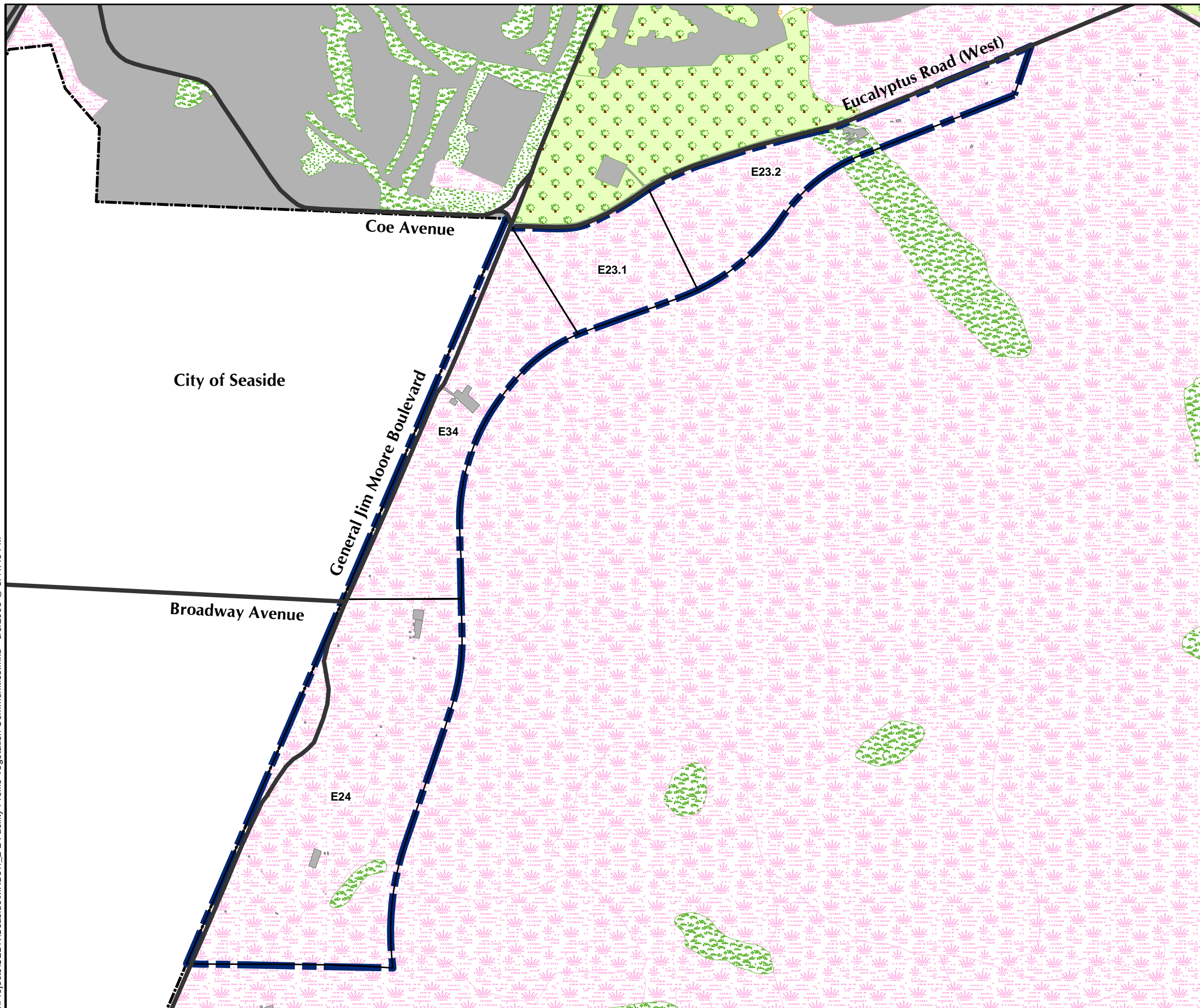


**Seaside MRA Physical Profile
Topography and Soil Type**





FORA ESCA RP
Monterey County, California

Figure 4.2-1




T:\Projects\SEDR\Seaside\MXD\v4_2-2 Facility Profile Vegetation Communities.mxd - 6/3/2008 @ 3:41:48 PM



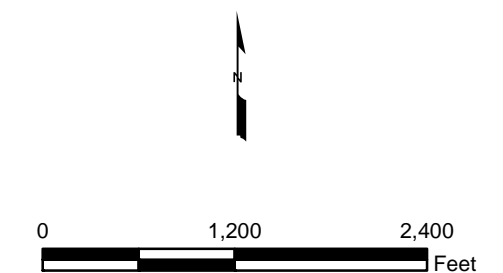
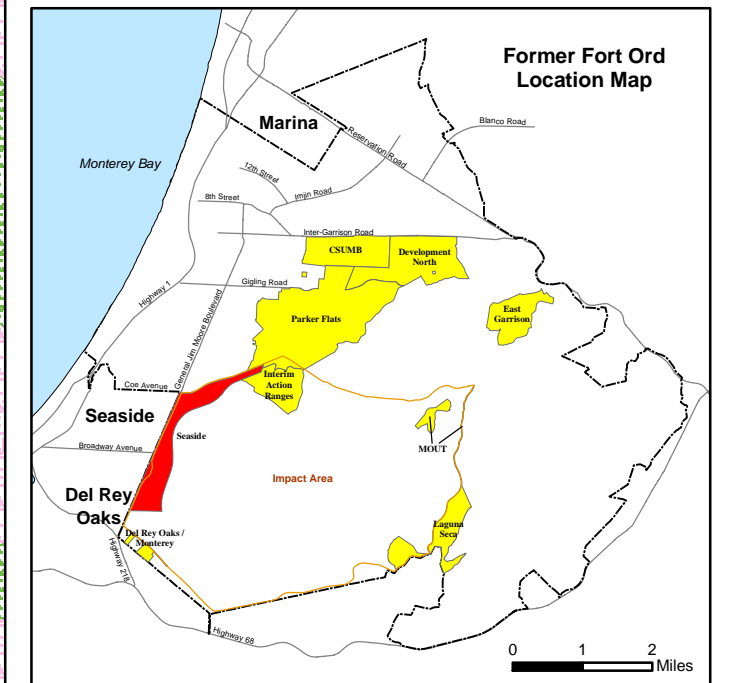
Legend

-  Munitions Response Area
-  Major Road
-  Former Fort Ord Boundary
-  USACE Parcel

Vegetation Type

-  Grassland
-  Maritime Chaparral
-  Coastal Coast Live Oak Woodland
-  Developed / Disturbed

Source: Flora and Fauna Baseline Study of Fort Ord, California, Jones and Stokes Association Inc., December 1992.

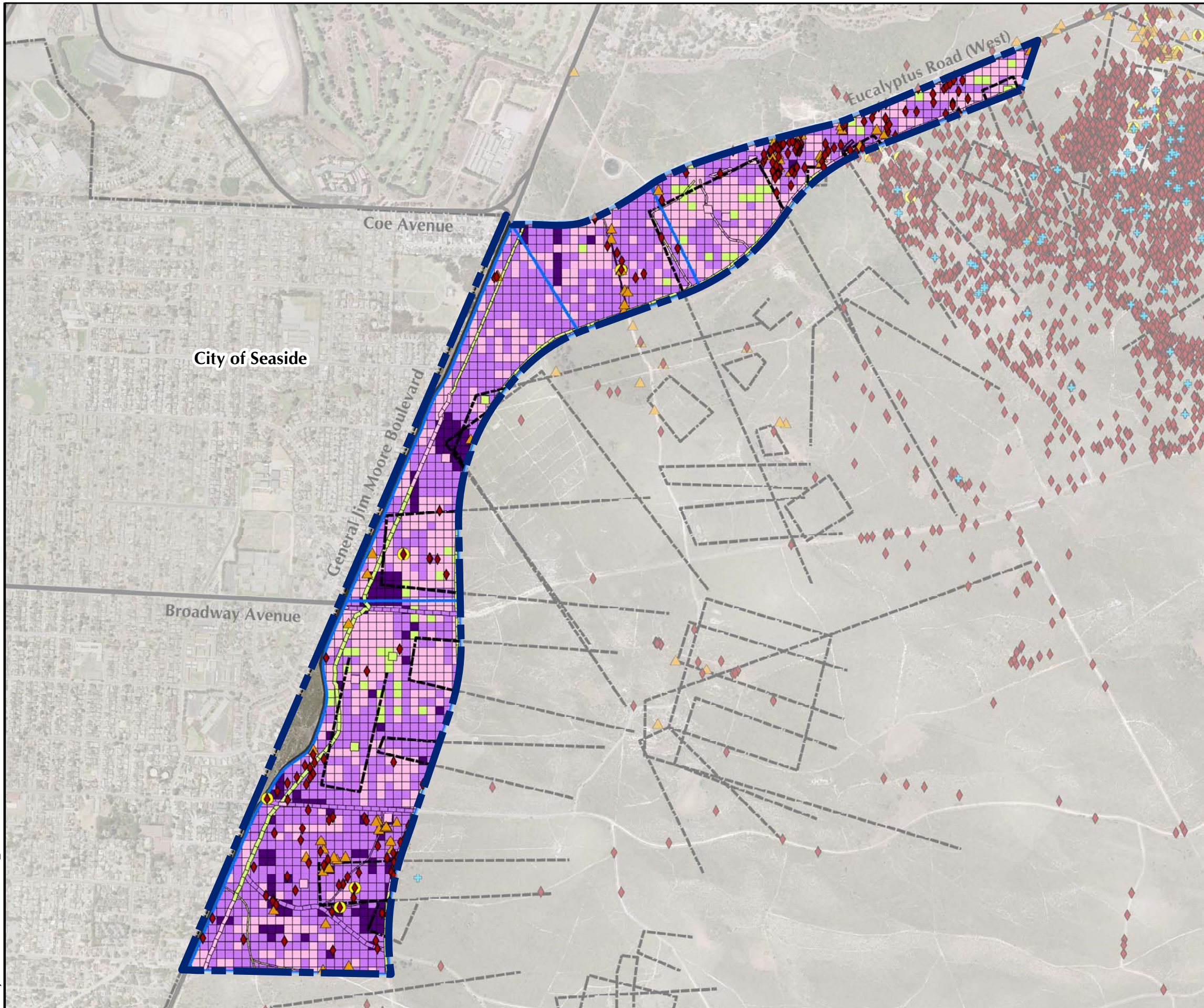


Seaside MRA Physical Profile Generalized Vegetation Communities

FORA ESCA RP
Monterey County, California

Figure 4.2-2

T:\Projects\SEDR\Seaside\MXDsv4_3-1 Release Profile MEC and MD Locations.mxd - 6/3/2008 @ 3:41:57 PM



Legend

- Munitions Response Area
- - - Firing Range
- Munitions Response Site
- Major Road
- · - · - Former Fort Ord Boundary

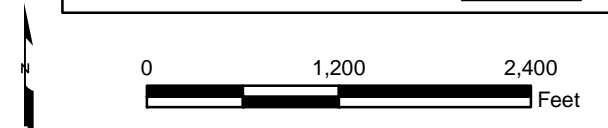
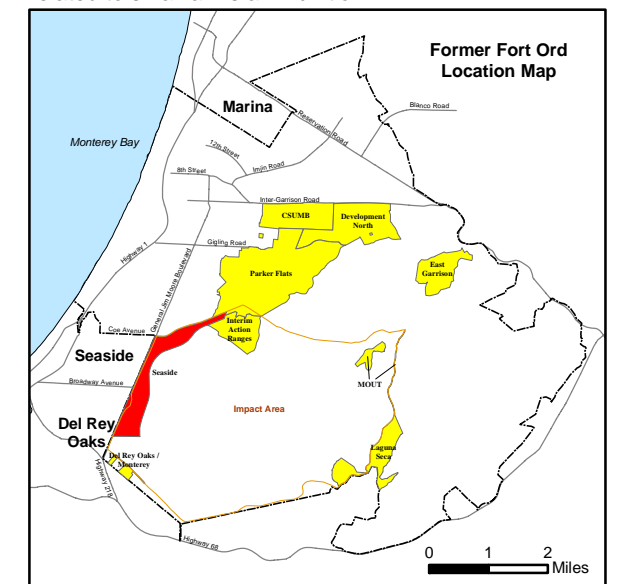
MEC Type

- ◆ Unexploded Ordnance (UXO)
- ▲ Discarded Military Munition (DMM)
- + Insufficient Data (ISD)
- Burial Pit Containing MEC

Munitions Debris (MD) by Weight (total pounds per grid)

- No Data
- 0
- < 10
- 10 to 100
- > 100

Note: Munitions Debris (MD) includes scrap related to small arms ammunition.

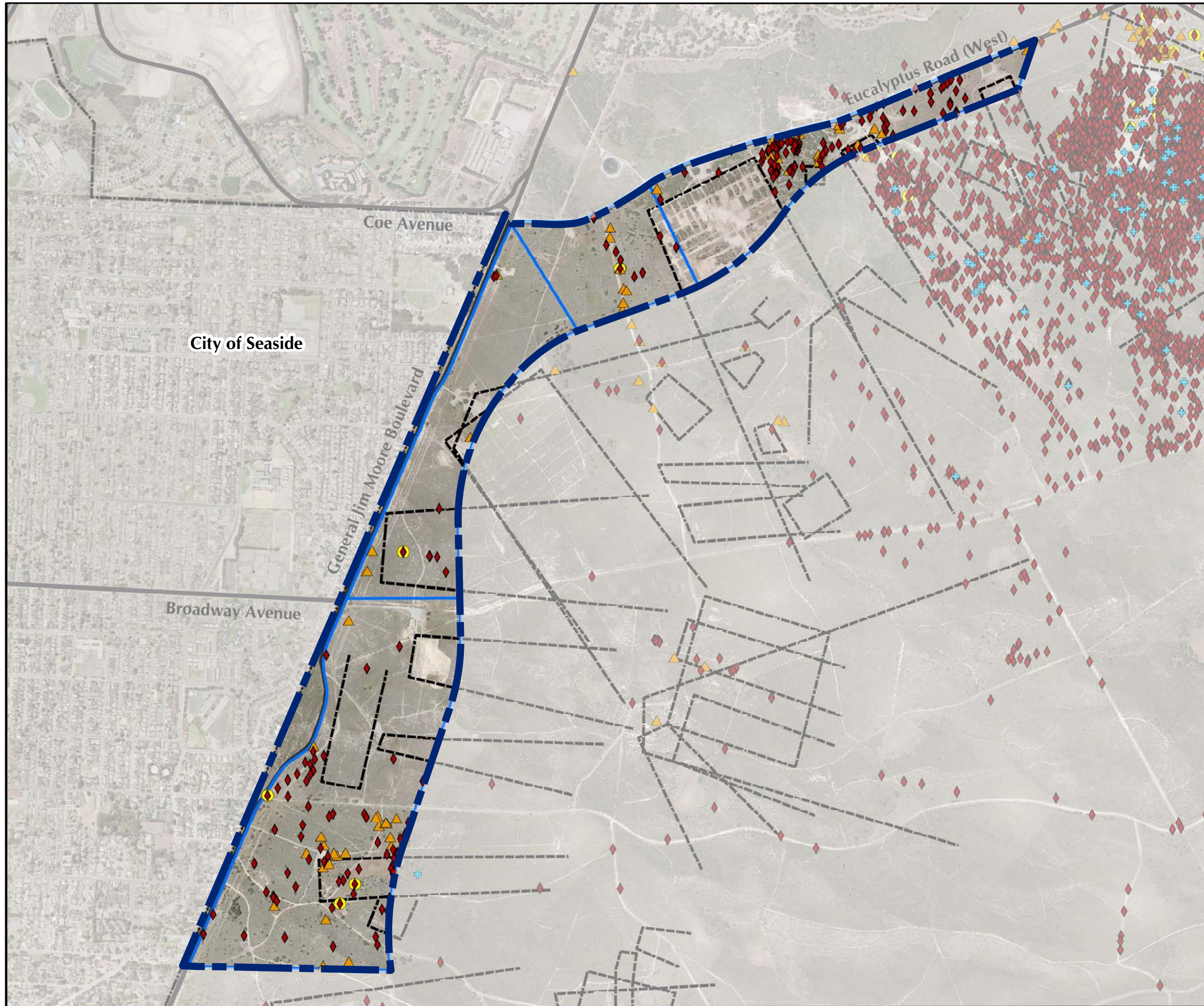


Seaside MRA Release Profile MEC and MD Locations

FORA ESCA RP
Monterey County, California

Figure 4.3-1

T:\Projects\SEDR\Seaside\MXD\4_3-2 Release Profile MEC Locations.mxd - 6/3/2008 @ 3:41:58 PM



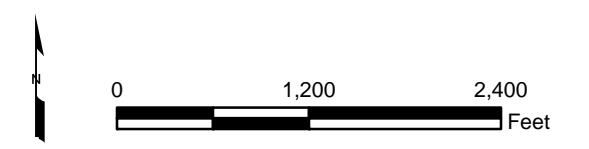
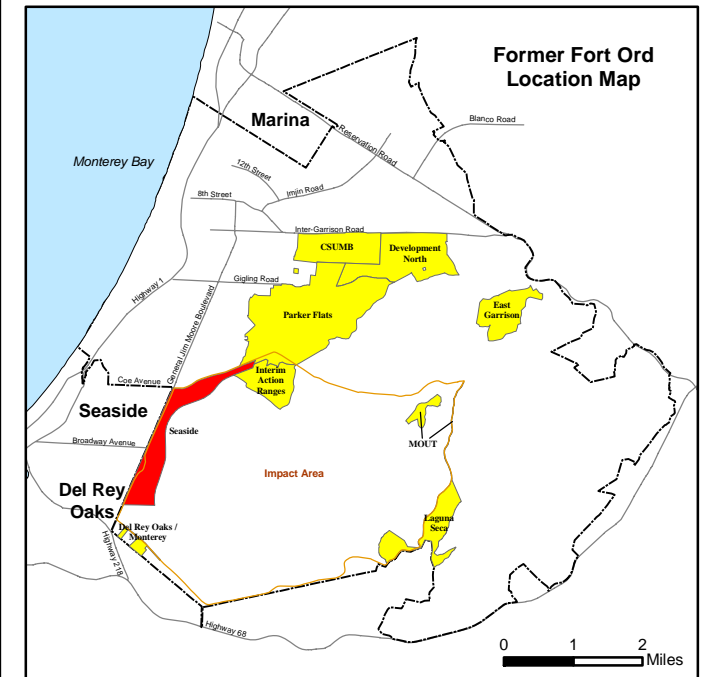
Legend

- - - Munitions Response Area
- Munitions Response Site
- Firing Range
- Major Road
- Former Fort Ord Boundary

MEC Type

- ◆ Unexploded Ordnance (UXO)
- ▲ Discarded Military Munition (DMM)
- + Insufficient Data (ISD)
- Burial Pit Containing MEC

Note: MEC locations may include more than one item.

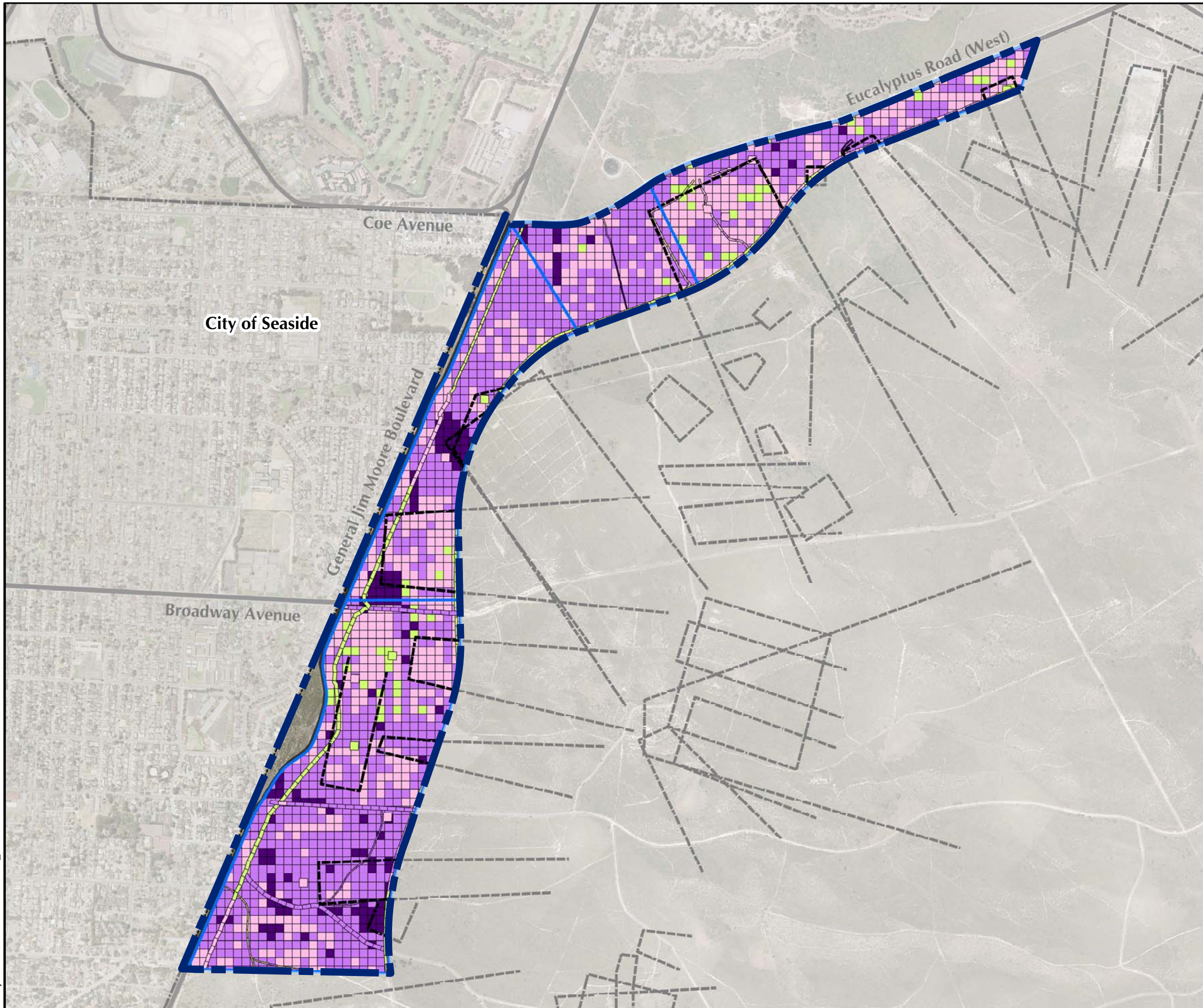


Seaside MRA Release Profile MEC Locations

FORA ESCA RP
Monterey County, California

Figure 4.3-2

T:\Projects\SEDR\Seaside\MXD\4_3-3 Release Profile MD Locations.mxd - 6/3/2008 @ 3:41:56 PM



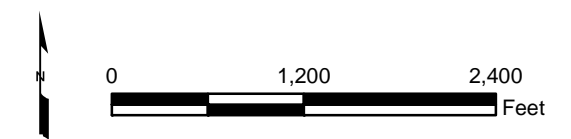
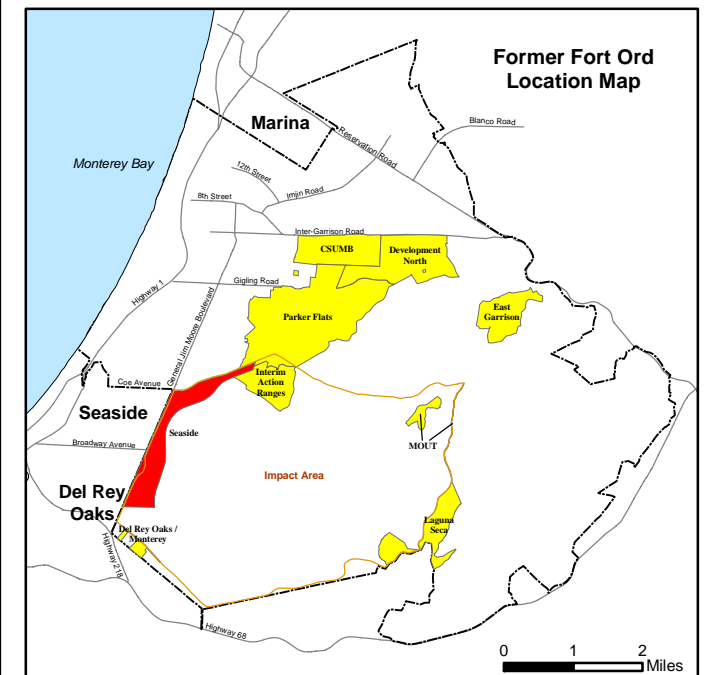
Legend

- Munitions Response Area
- Munitions Response Site
- Firing Range
- Major Road
- Former Fort Ord Boundary

Munitions Debris (MD) by Weight (total pounds per grid)

- No Data
- 0
- < 10
- 10 to 100
- > 100

Note: Munitions Debris (MD) includes scrap related to small arms ammunition.

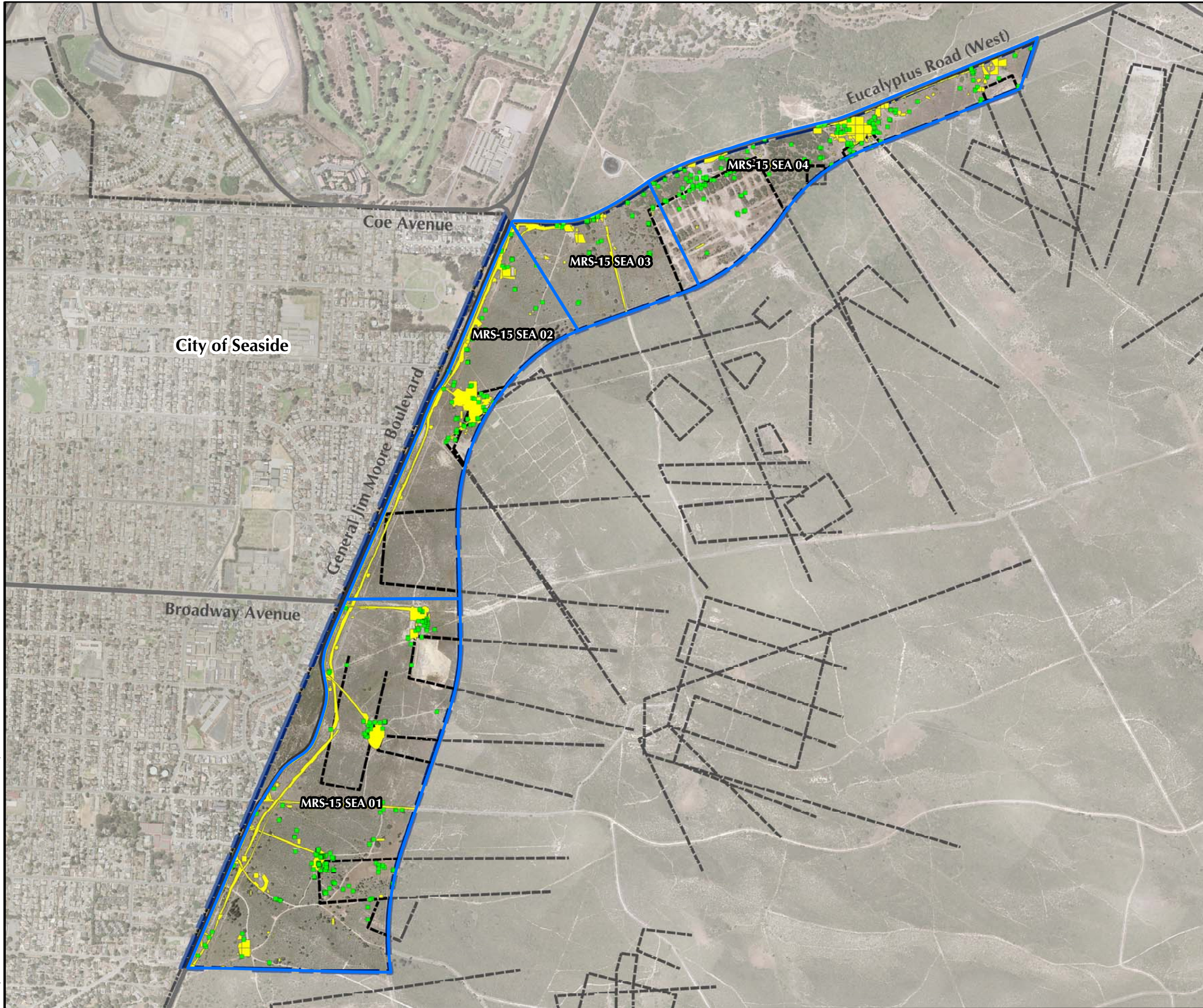


Seaside MRA Release Profile MD Locations

FORA ESCA RP
Monterey County, California

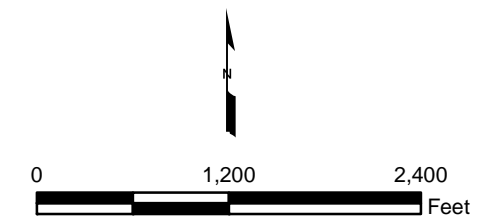
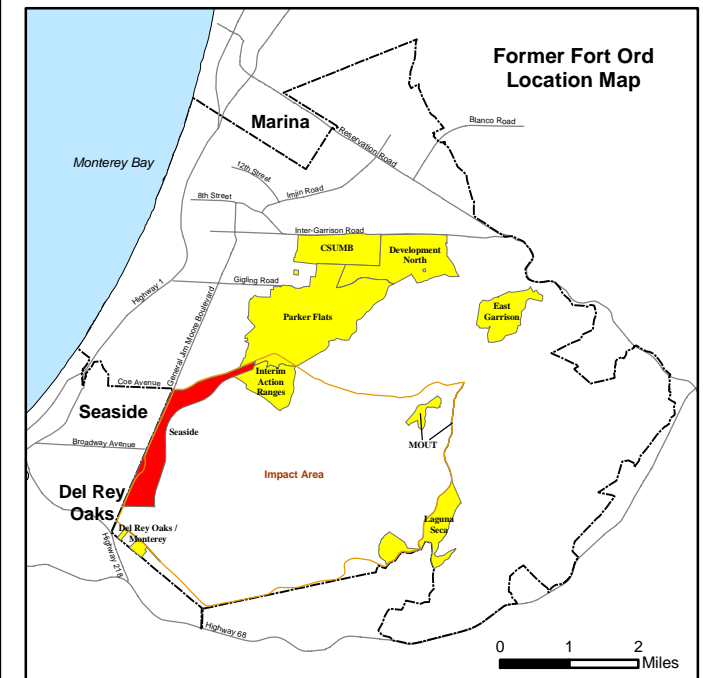
Figure 4.3-3

T:\Projects\SEDR\Seaside\MXD\4_3-4 Release Profile Special Case Areas.mxd - 6/3/2008 @ 3:41:57 PM



Legend

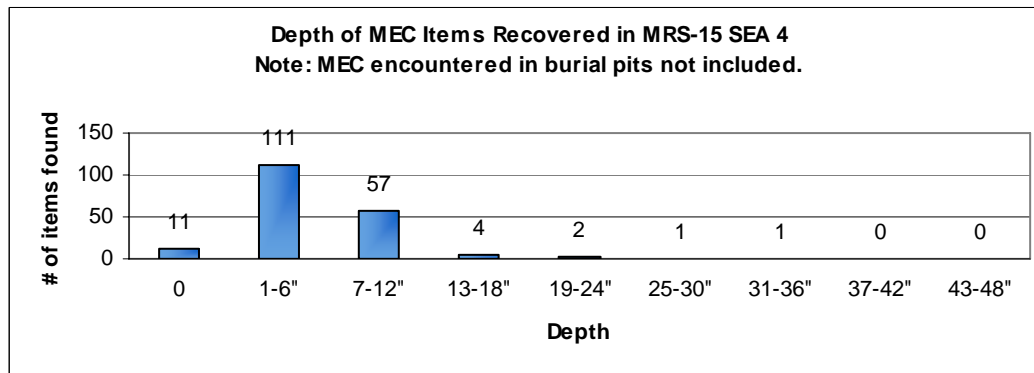
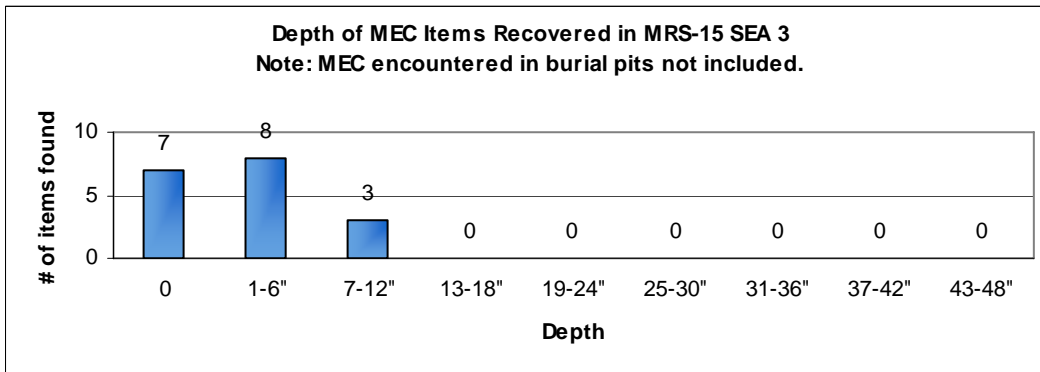
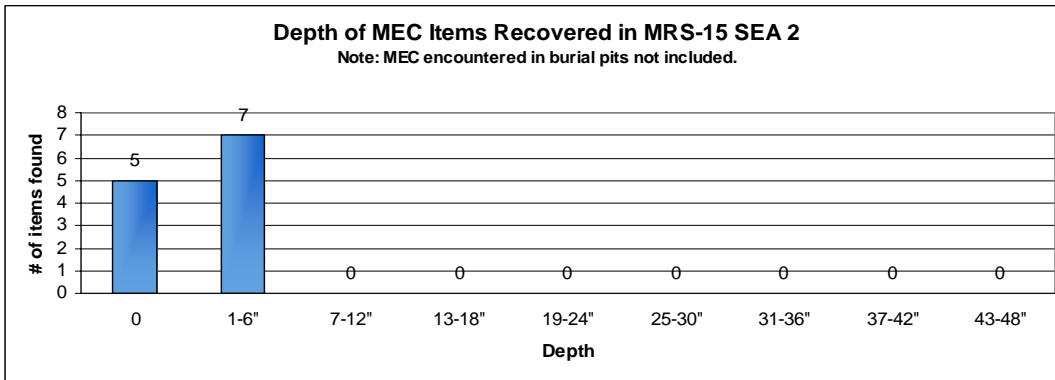
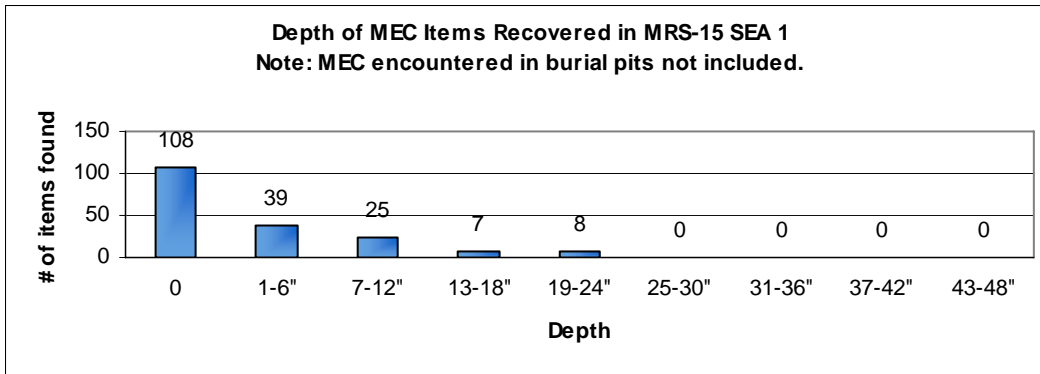
- Munitions Response Area
- Munitions Response Site
- Firing Range
- Major Road
- Former Fort Ord Boundary
- Special Case Area Point
- Special Case Area



**Seaside MRA Release Profile
Special Case Areas**

FORA ESCA RP
Monterey County, California

Figure 4.3-4



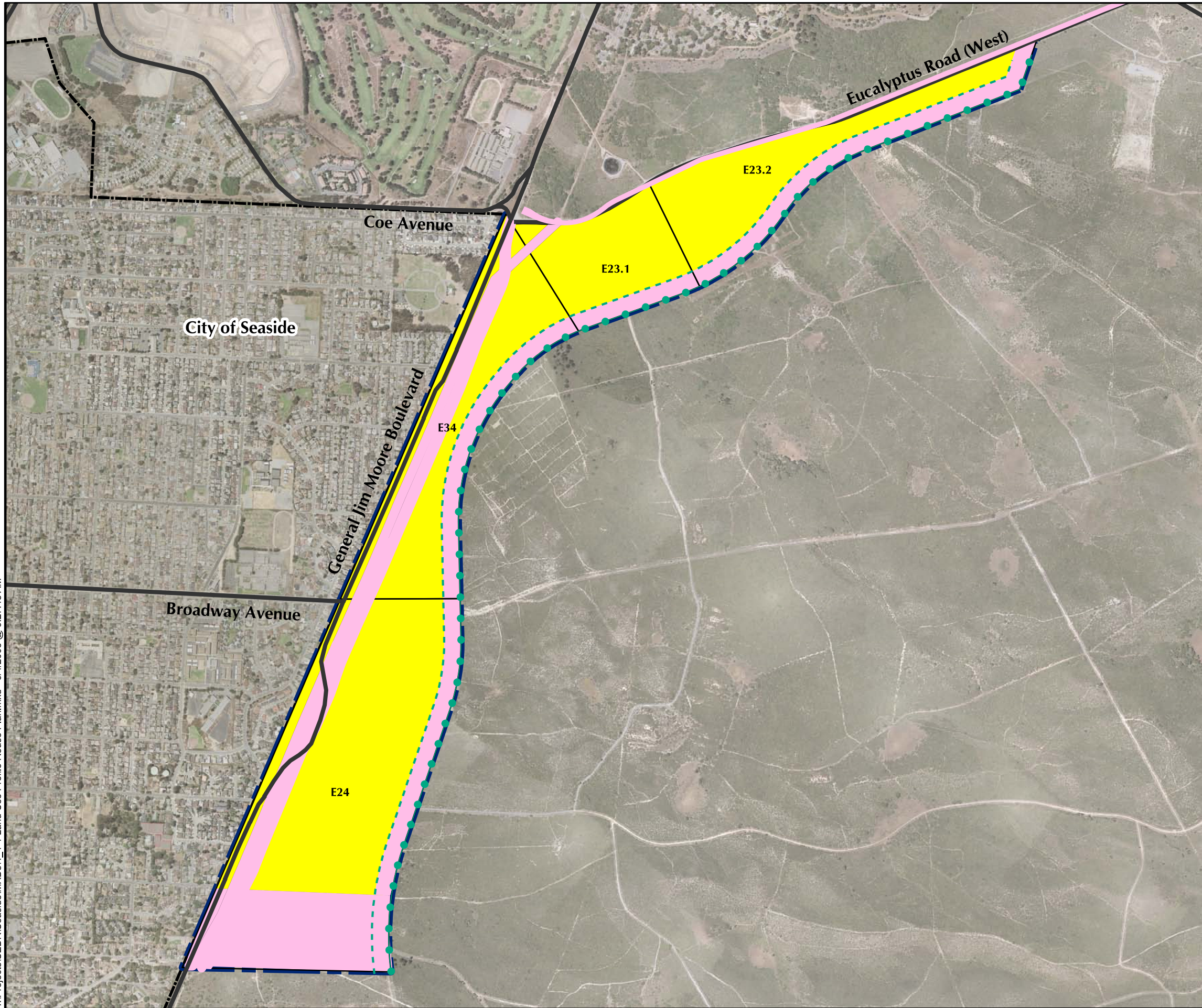
**Westcliffe
Engineers, Inc.**

**Seaside MRA
Distribution of MEC
Recovered by Depth Interval**




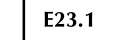
FORA ESCA RP
Monterey County, California

Figure 4.3-5


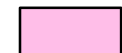



T:\Projects\SEDRI\Seaside\MXD\4_4-1 Land Use Profile Reuse Plan.mxd - 6/4/2008 @ 9:27:48 AM

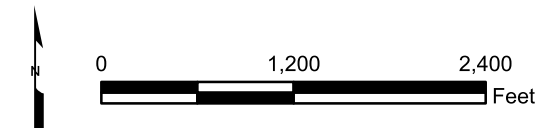
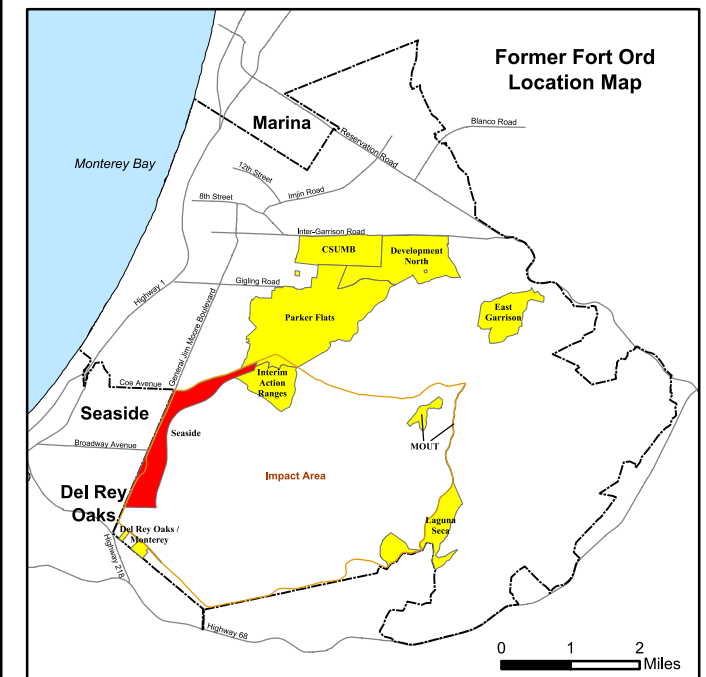


Legend

-  Munitions Response Area
-  Major Road
-  Former Fort Ord Boundary
-  E23.1 USACE Parcel

Future Land Use

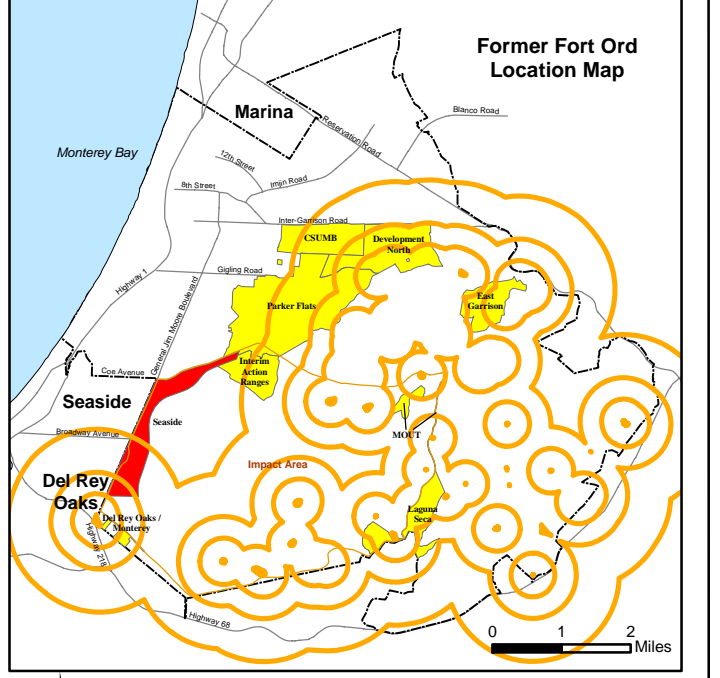
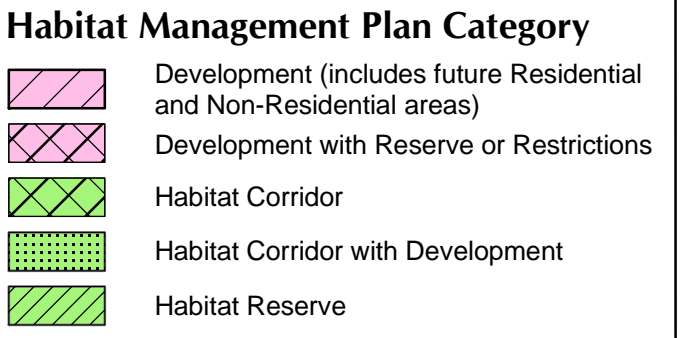
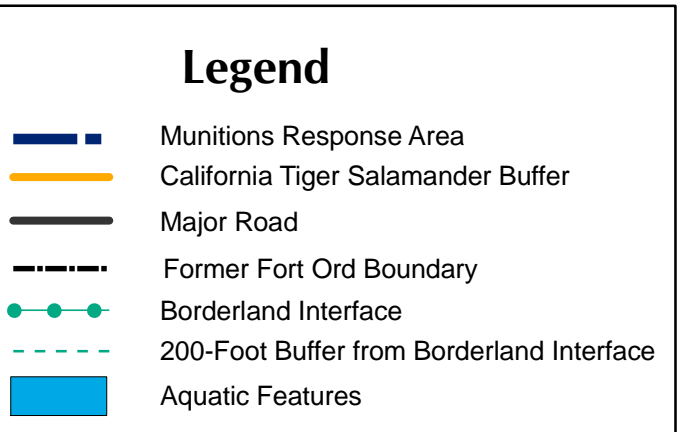
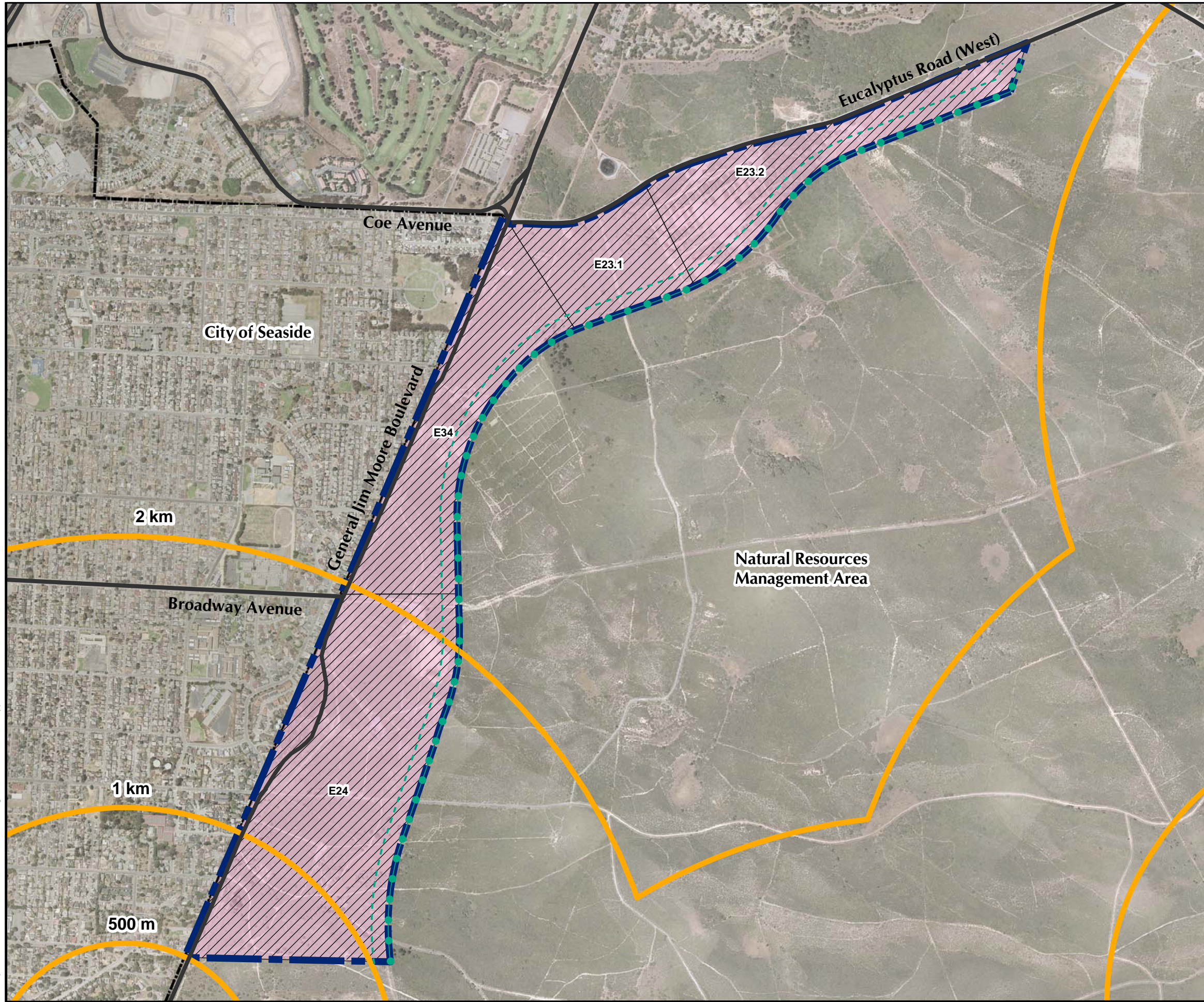
-  Residential
-  Non-Residential
-  Habitat Reserve
-  Borderland Interface
-  200-Foot Buffer from Borderland Interface



Seaside MRA Land Use Profile Reuse Plan

FORA ESCA RP
Monterey County, California

Figure 4.4-1



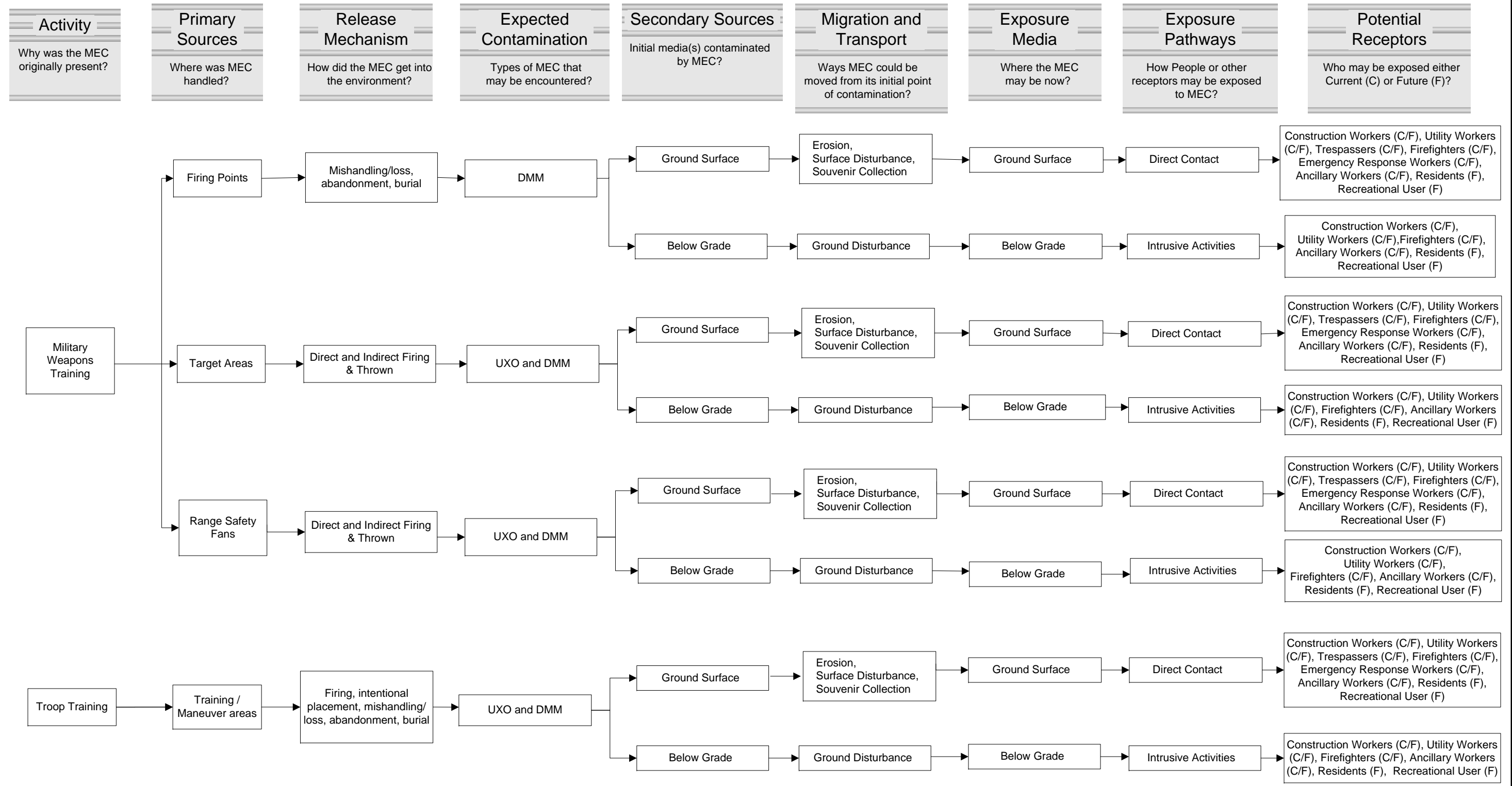
T:\Projects\SEDR\Seaside\MXD\4.5-1 Ecological Profile Habitat Type.mxd - 6/3/2008 @ 3:41:59 PM

Westcliffe
Engineers, Inc.

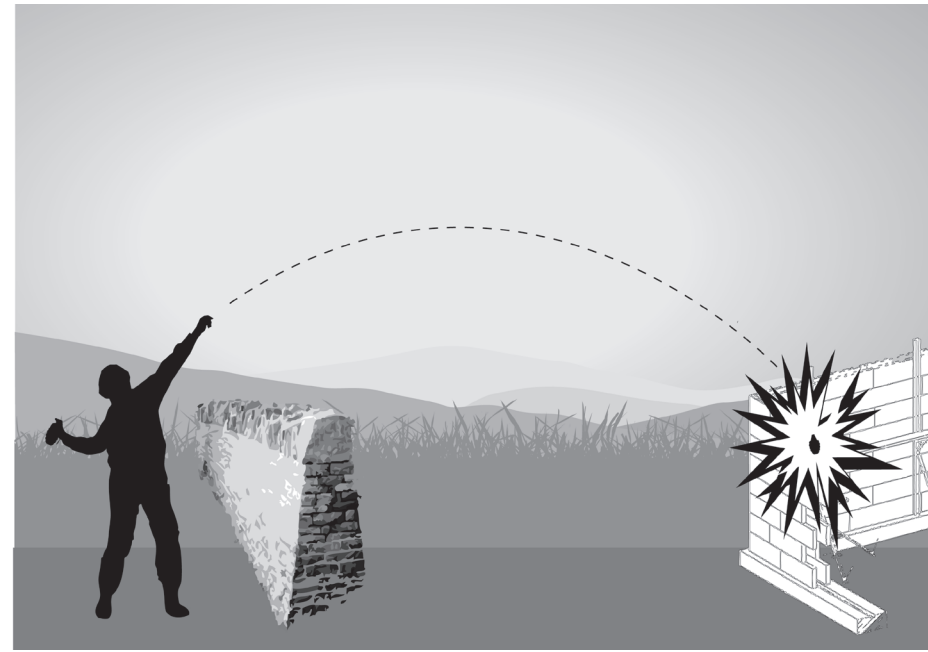
Seaside MRA Ecological Profile Habitat Type

FORA ESCA RP
Monterey County, California

Figure 4.5-1



  Westcliffe Engineers, Inc.	Seaside MRA Pathway Analysis Flowchart FORA ESCA RP Monterey County, California
	Figure 4.6-1



Thrown Ordnance



Burial / Mishandling / Loss



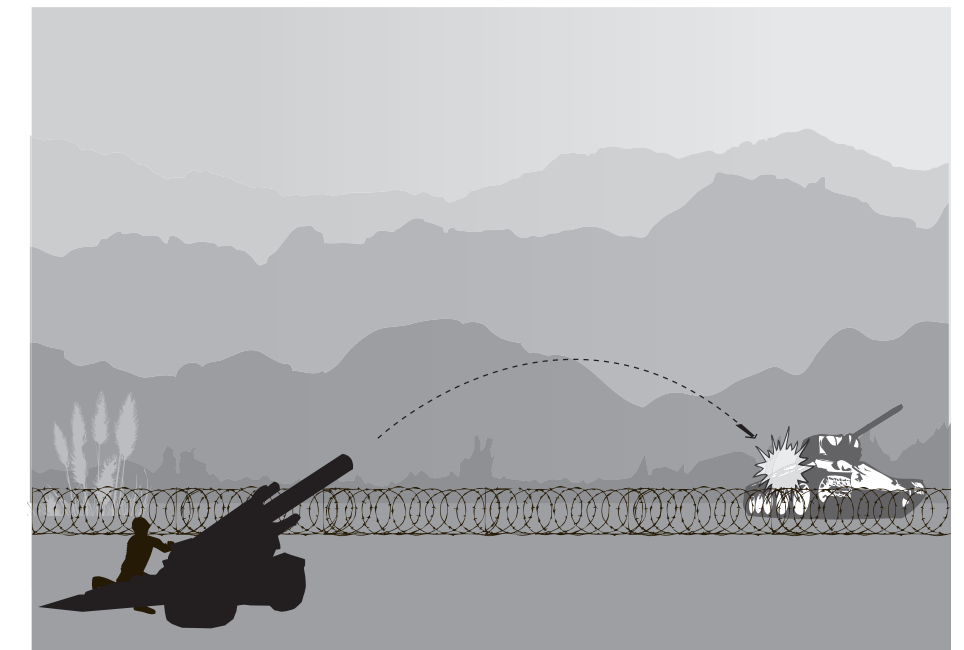
Firing



Direct Fire



Indirect Fire



Indirect Fire