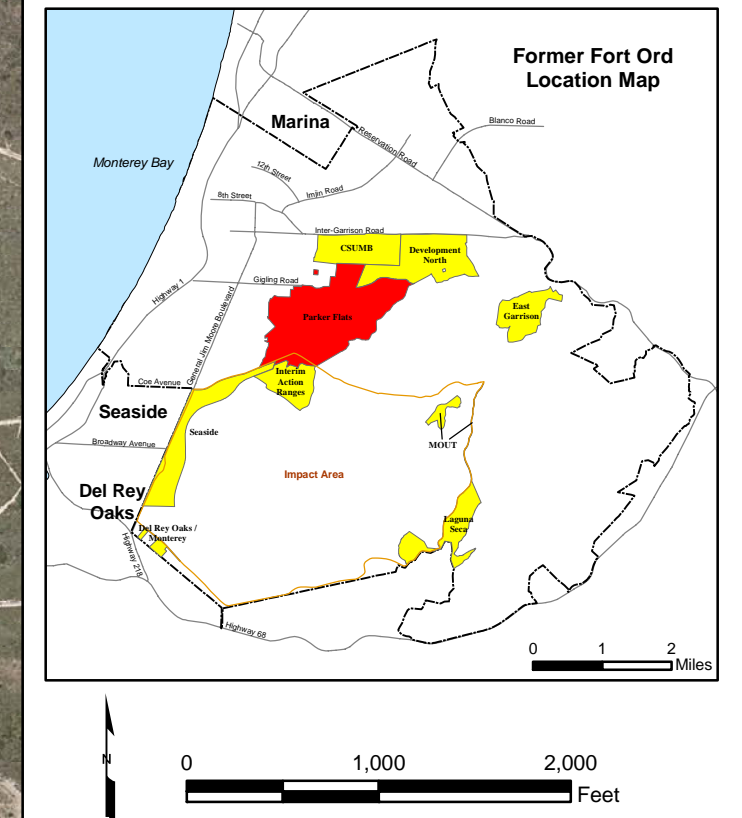
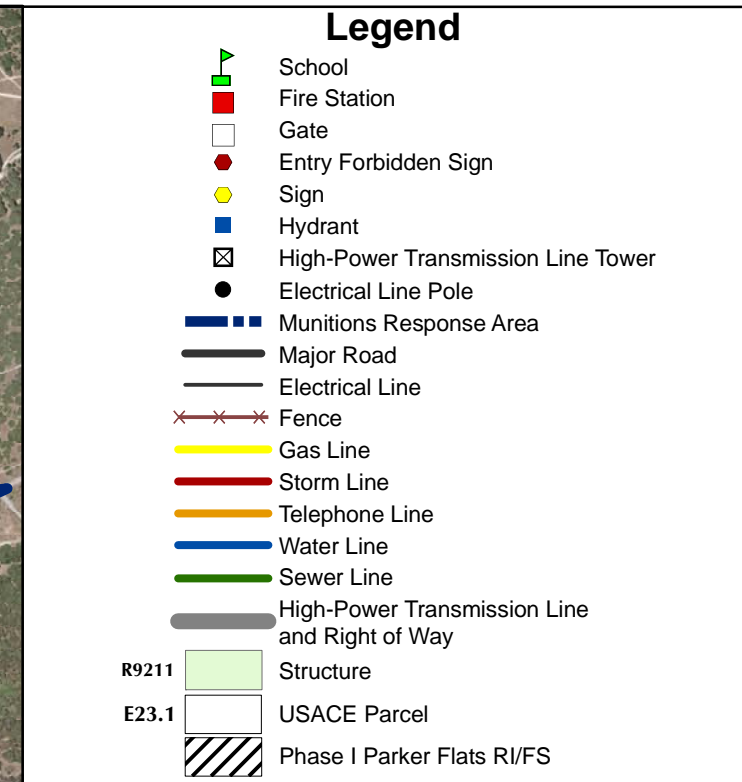
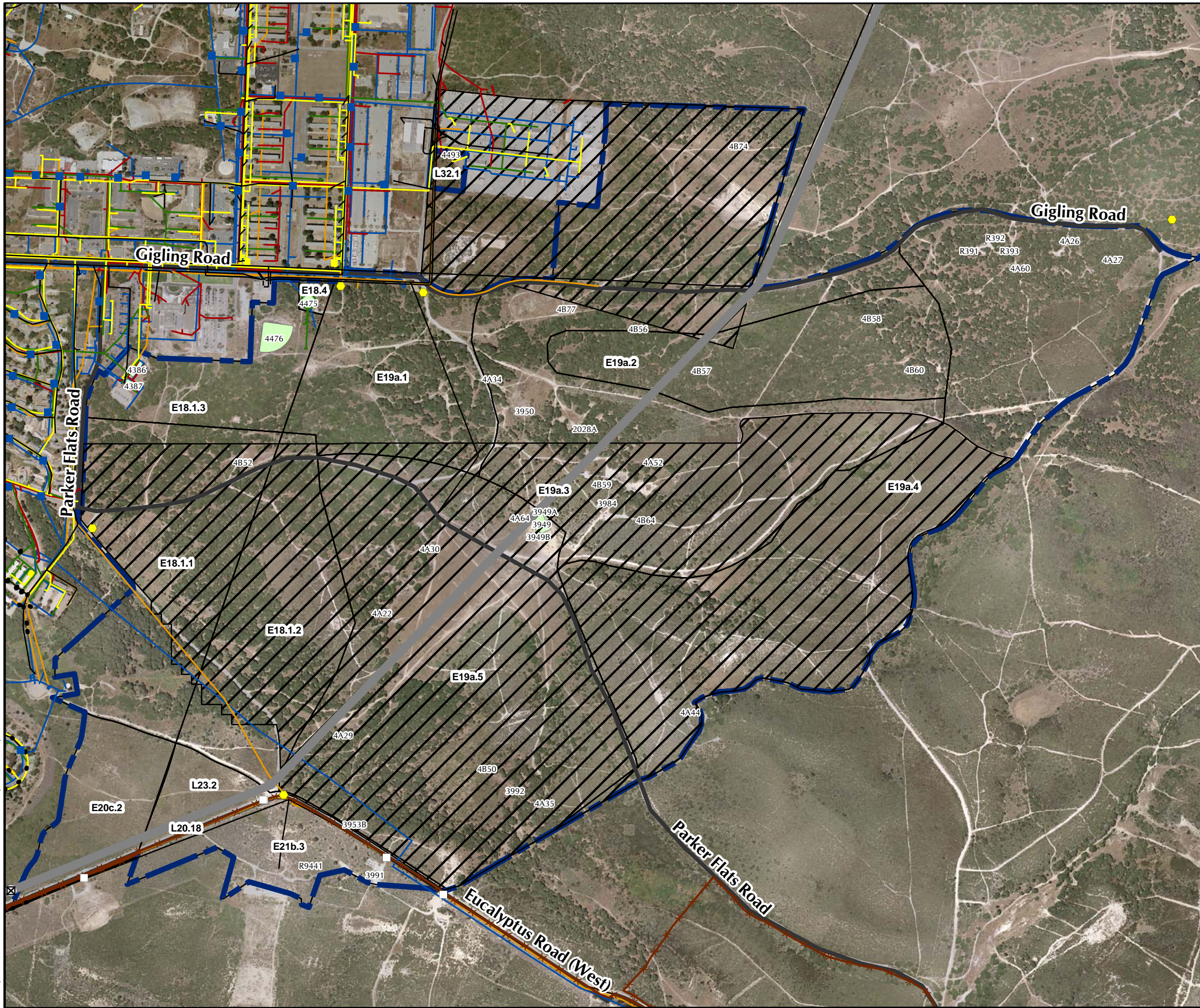


T:\Projects\SED\RP\Parker Flats\MXD\5.1-1 Facility Profile Physical Features.mxd - 10/1/2008 @ 9:54:01 AM



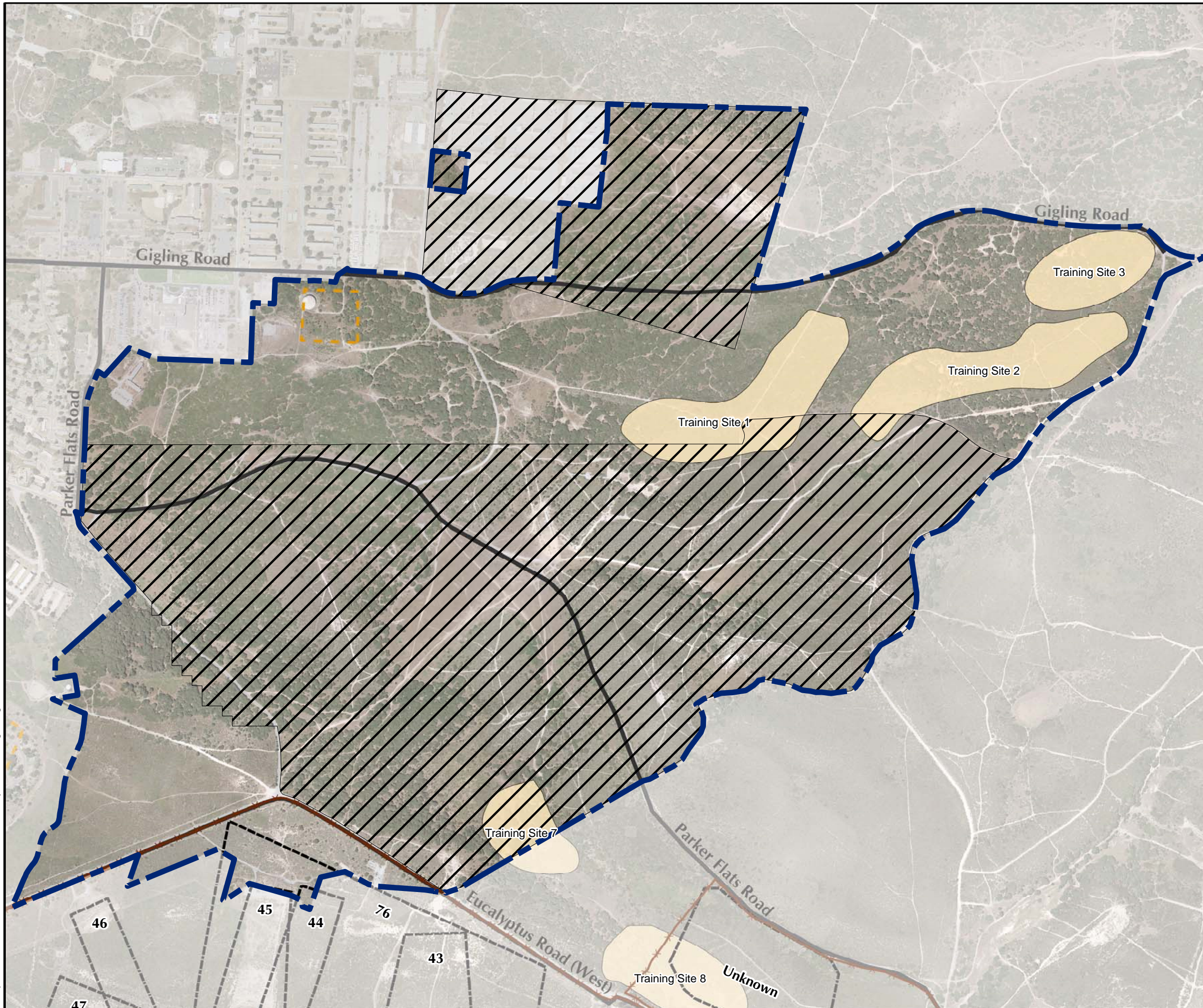
Westcliffe Engineers, Inc.

**Parker Flats MRA Facility Profile
Physical Features**

FORA ESCA RP
Monterey County, California

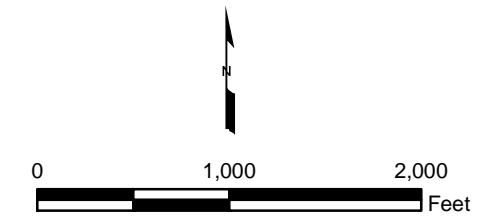
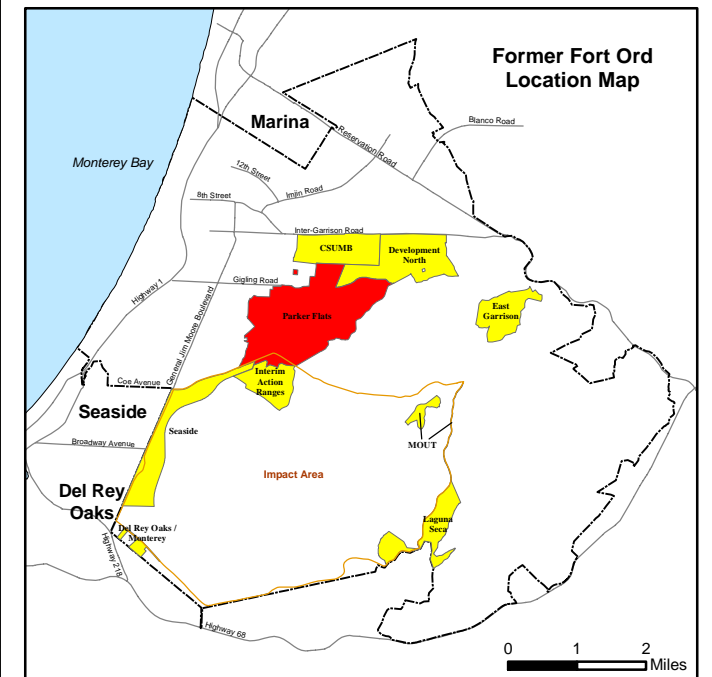
Figure 5.1-1

T:\Projects\SEDR\Parker Flats\MXD\5_1-2 Facility Profile Firing Ranges.mxd - 10/1/2008 @ 9:36:34 AM



Legend

- Training Sites
- Munitions Response Area
- Firing Range
- Historical Range
- Major Road
- Fence
- Phase I Parker Flats RI/FS

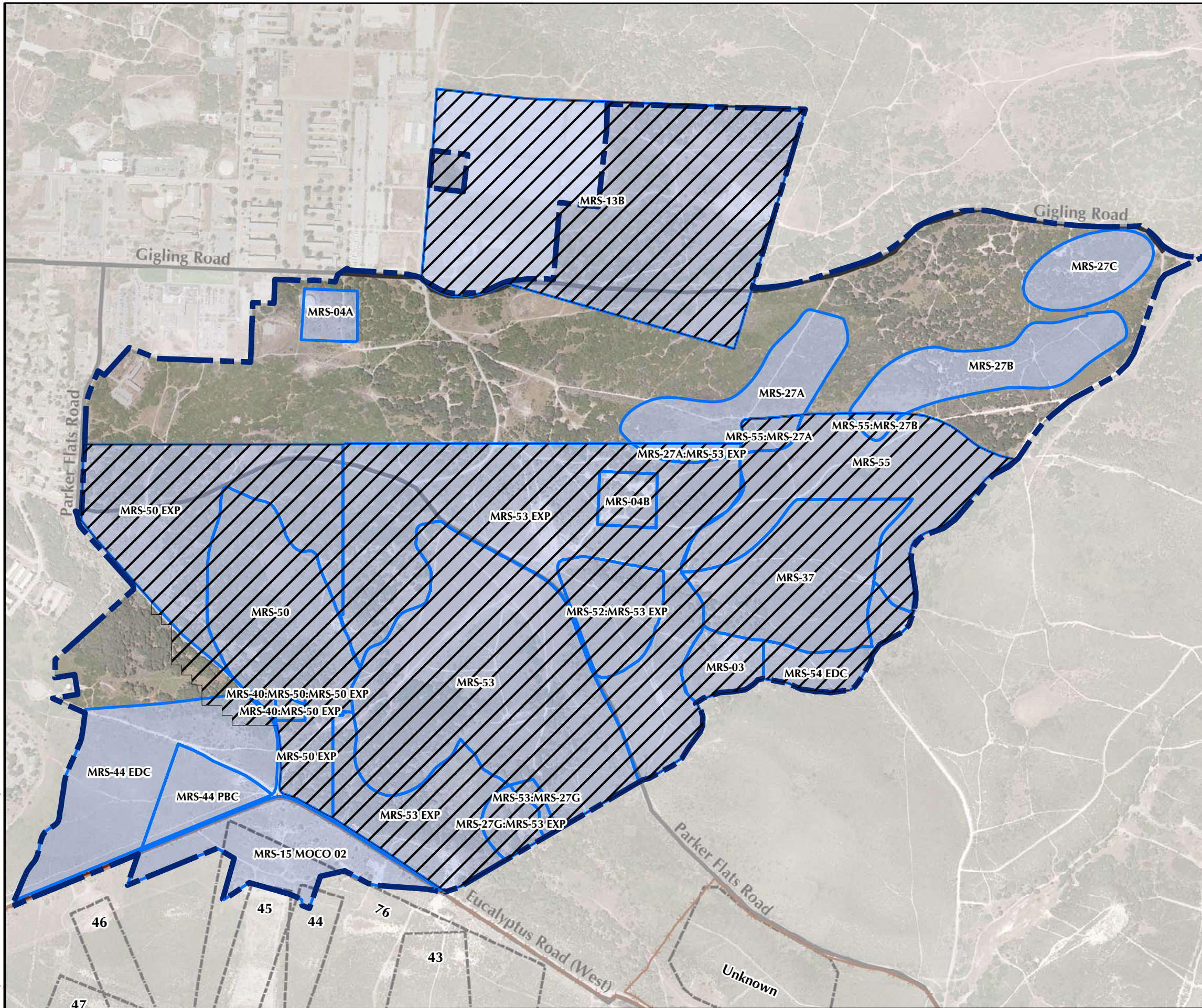


Parker Flats MRA Facility Profile Ranges and Training Sites

FORA ESCA RP
Monterey County, California

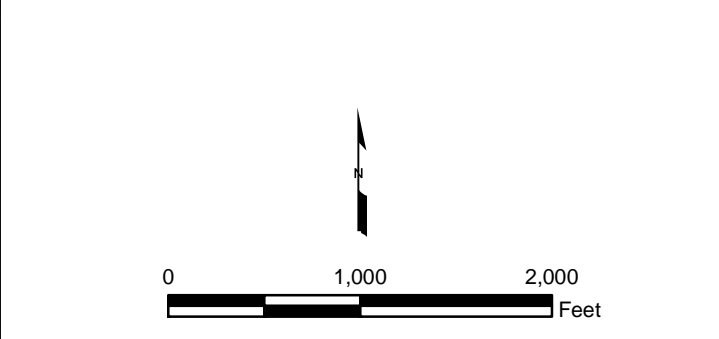
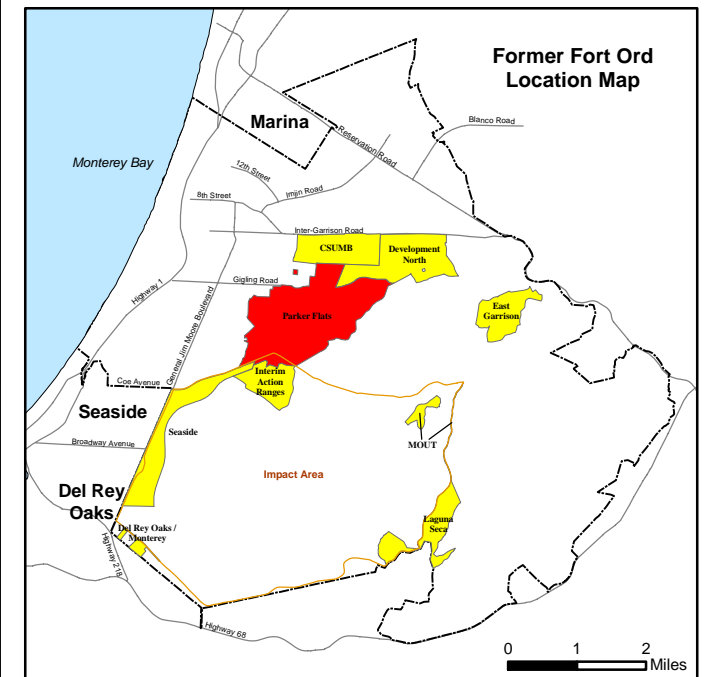
Figure 5.1-2

T:\Projects\SEDRI\Parker Flats\MXD\5_1-3 Facility Profile MRS Boundaries.mxd - 10/1/2008 @ 9:36:02 AM



Legend

- Munitions Response Area
- Major Road
- Fence
- Firing Range
- Munitions Response Site
- Phase I Parker Flats RI/FS

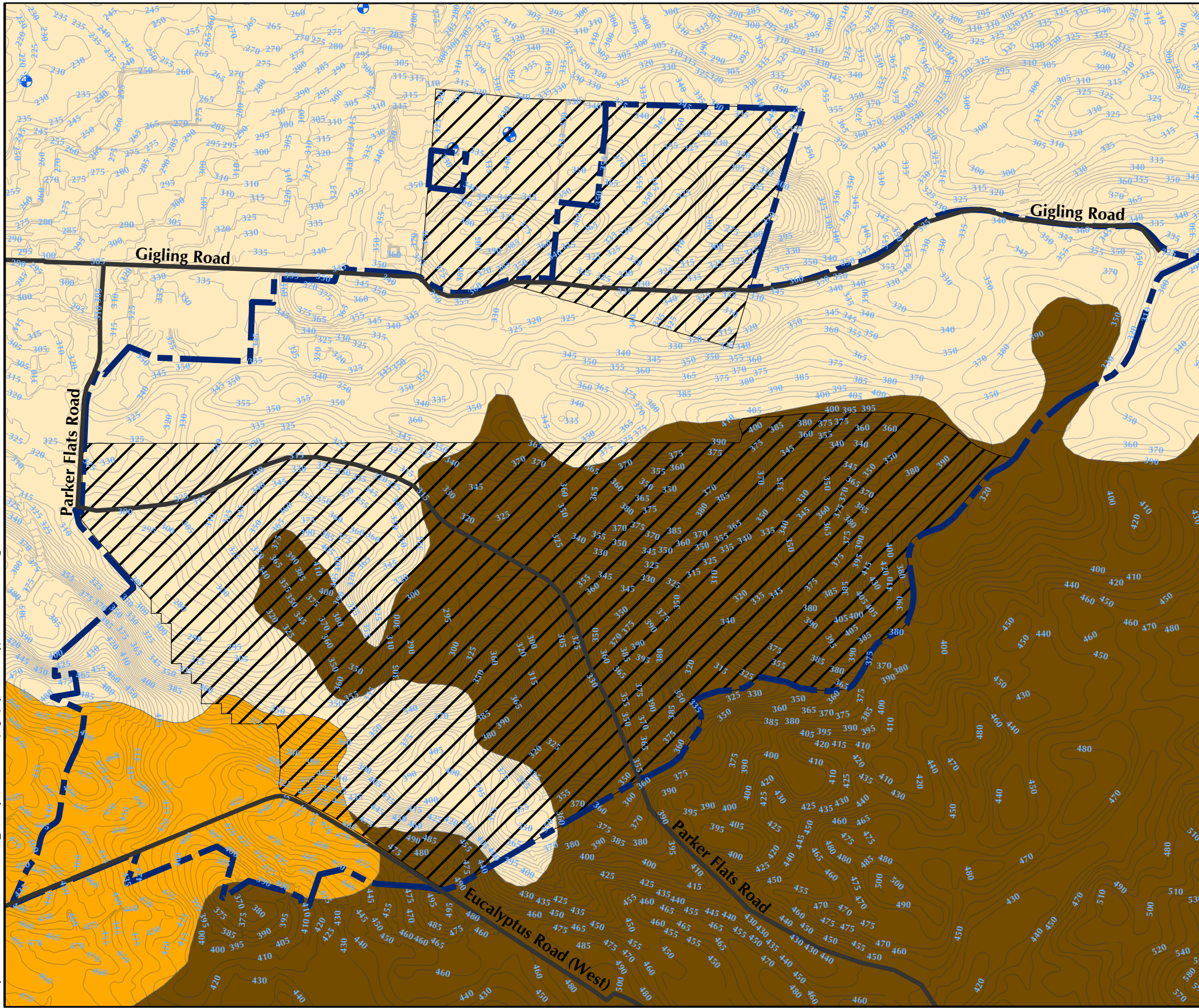


**Parker Flats MRA Facility Profile
Munitions Response Site
Boundaries**

FORA ESCA RP
Monterey County, California

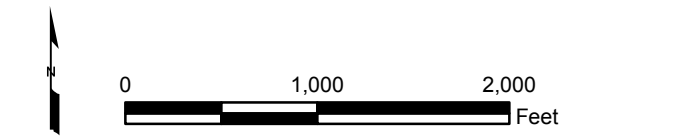
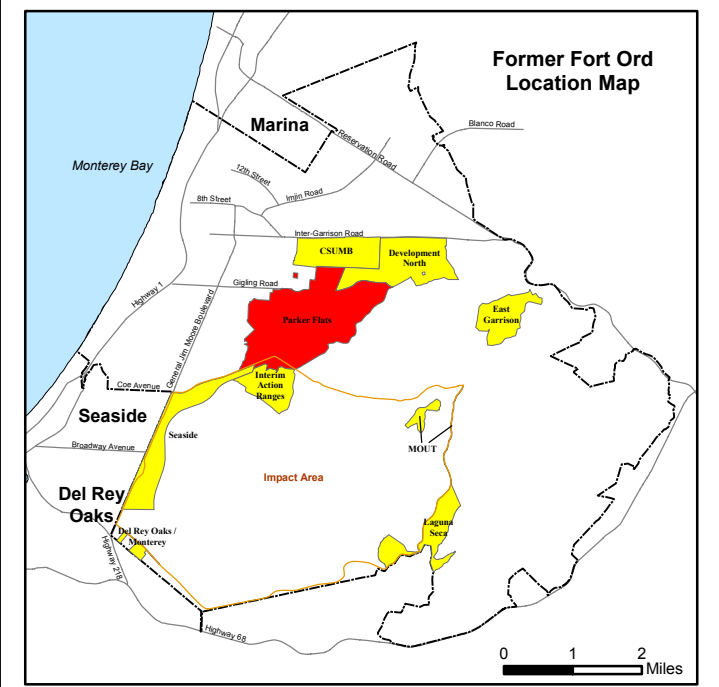
Figure 5.1-3

T:\Projects\SEDR\Parker Flats\MXD\5.2-1 Physical Profile Topography and Soil Type.mxd - 10/1/2008 @ 9:36:32 AM



Legend

- Environmental Well
 - Abandoned Well
 - Water Supply Well
 - 540 Topography 5ft
 - Munitions Response Area
 - Major Road
 - Phase I Parker Flats RI/FS
- ### Soil Type
- Arnold-Santa Ynez Complex
 - Baywood Sand, 2 to 15 Percent Slopes
 - Oceano Loamy Sand, 2 to 15 Percent Slopes

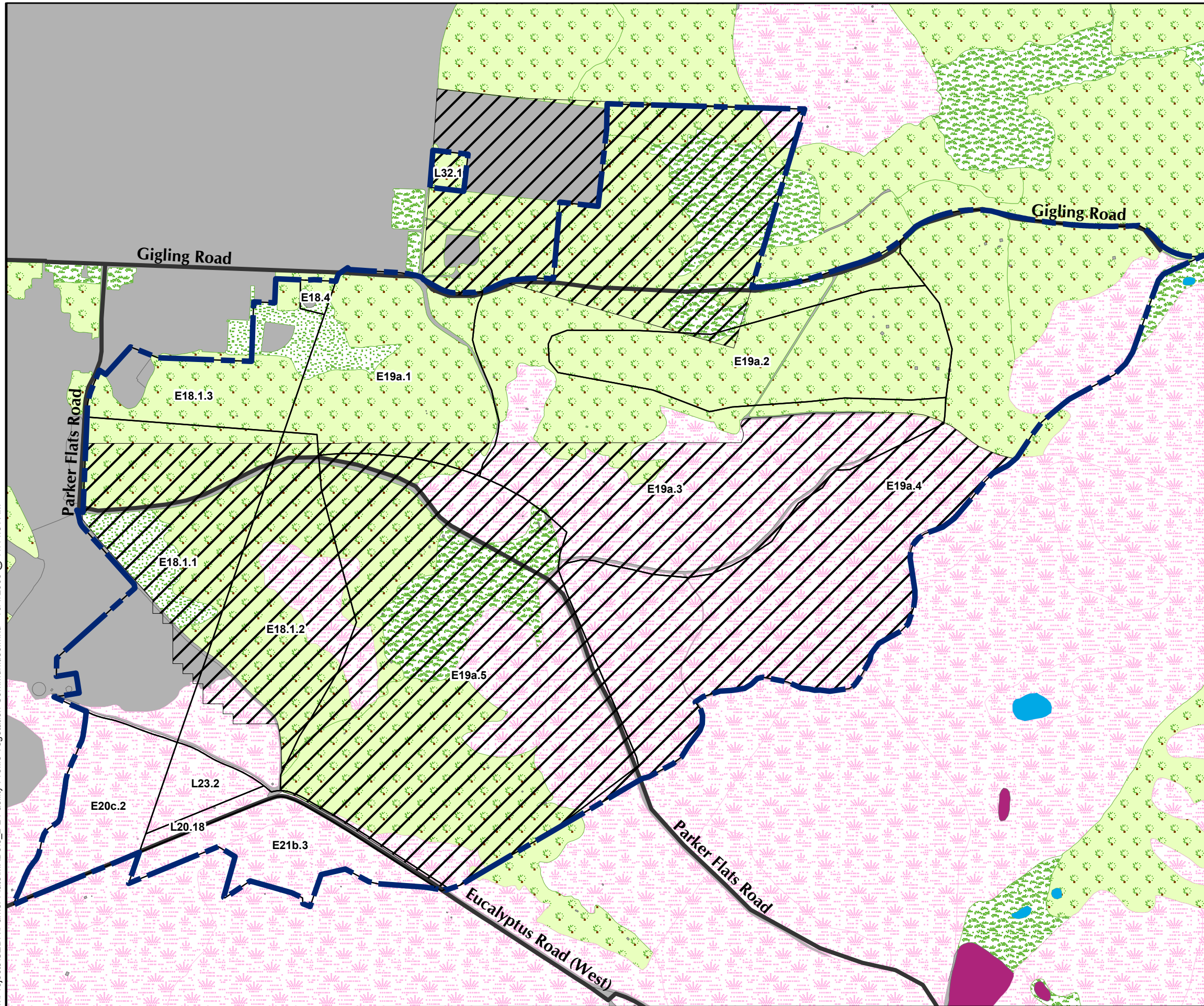


**Parker Flats MRA Physical Profile
Topography and Soil Type**

FORA ESCA RP
Monterey County, California

Figure 5.2-1

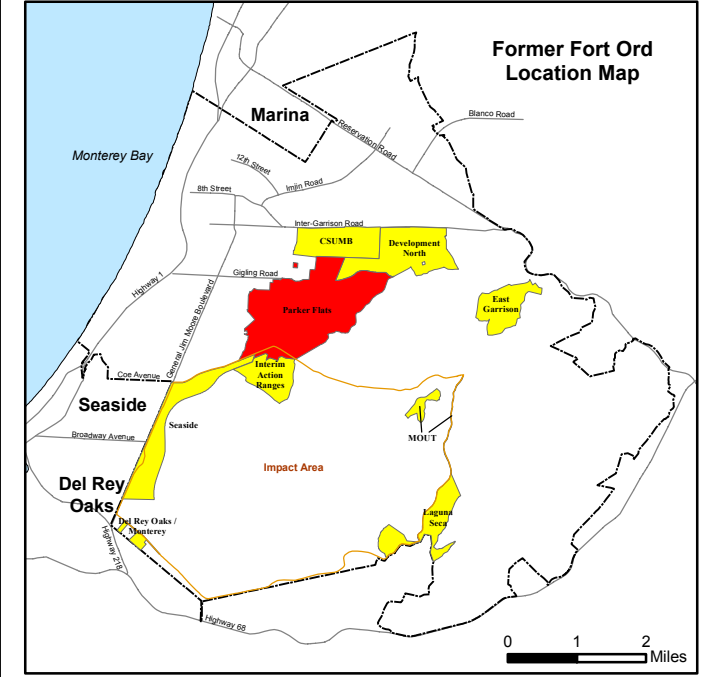
T:\Projects\SEDR\Parker Flats\MXD\5.2-2 Facility Profile Vegetation Communities.mxd - 10/1/2008 @ 11:14:51 AM



- ### Legend
- Munitions Response Area
 - Major Road
 - USACE Parcel
 - Phase I Parker Flats RI/FS

- ### Vegetation Type
- Grassland
 - Maritime Chaparral
 - Coastal Coast Live Oak Woodland
 - Coastal Scrub
 - Ice Plant Mats
 - Aquatic Feature
 - Developed / Disturbed

Source: Flora and Fauna Baseline Study of Fort Ord, California, Jones and Stokes Association Inc., December 1992.

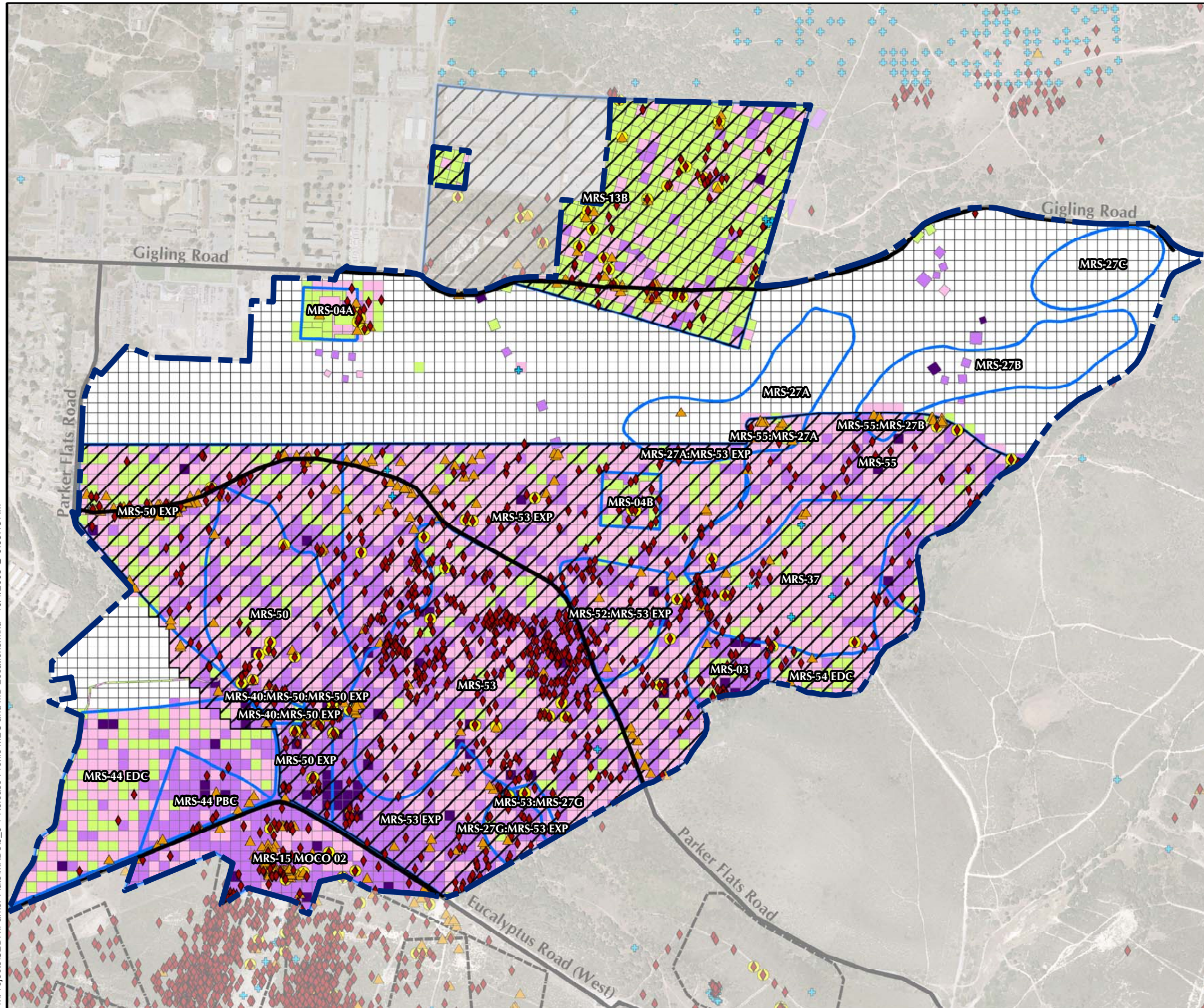


**Parker Flats MRA Physical Profile
Generalized Vegetation Communities**

FORA ESCA RP
Monterey County, California

Figure 5.2-2

T:\Projects\SEDR\Parker Flats\MXD\5_3-1 Release Profile MEC and MD Locations.mxd - 10/1/2008 @ 9:55:13 AM



Legend

- Munitions Response Area
- Munitions Response Site
- Major Road
- Phase I Parker Flats RI/FS

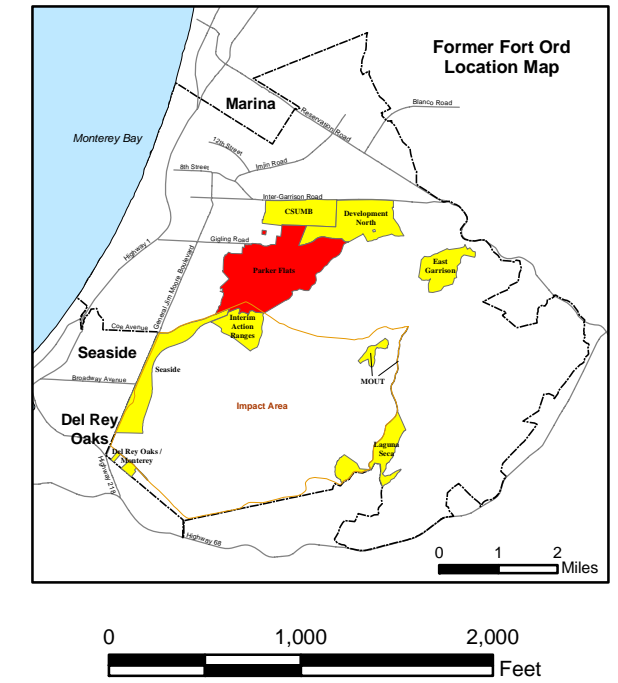
MEC Type

- ◆ Unexploded Ordnance (UXO)
- ▲ Discarded Military Munition (DMM)
- + Insufficient Data (ISD)
- Burial Pit Containing MEC

Munitions Debris (MD) by Weight (total pounds per grid)

- No Data
- 0
- < 10
- 10 to 100
- > 100

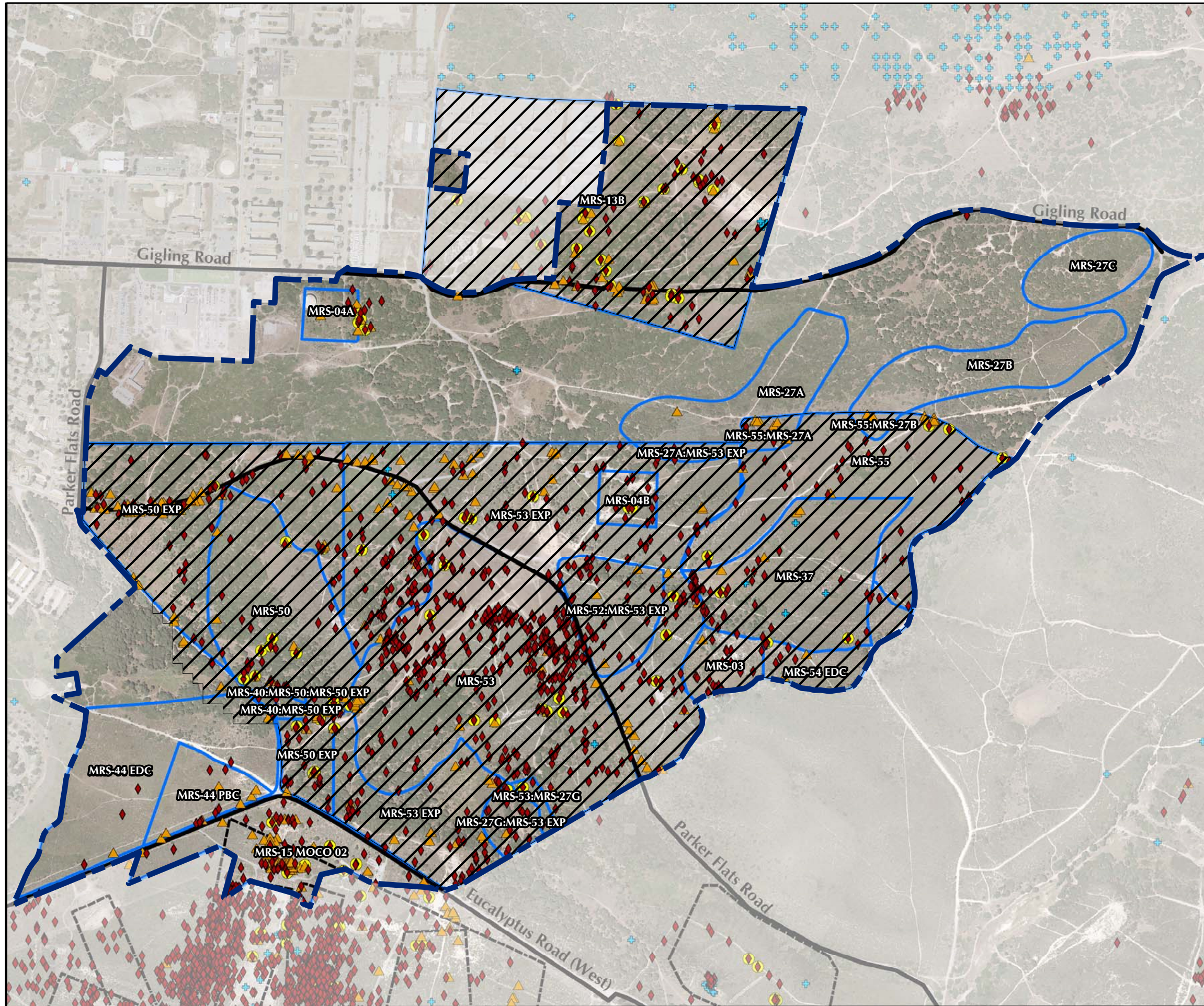
Note: Munitions Debris (MD) includes scrap related to small arms ammunition.



**Parker Flats MRA Release Profile
MEC and MD Locations**
FORA ESCA RP
Monterey County, California

Figure 5.3-1

T:\Projects\SEDR\Parker Flats\MXD\5_3-2 Release Profile MEC Locations.mxd - 10/1/2008 @ 9:55:14 AM



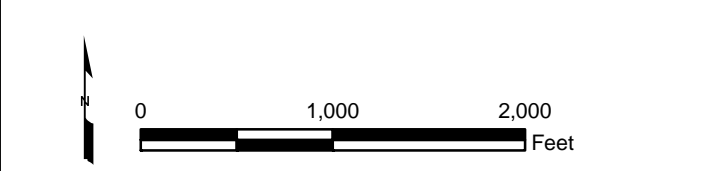
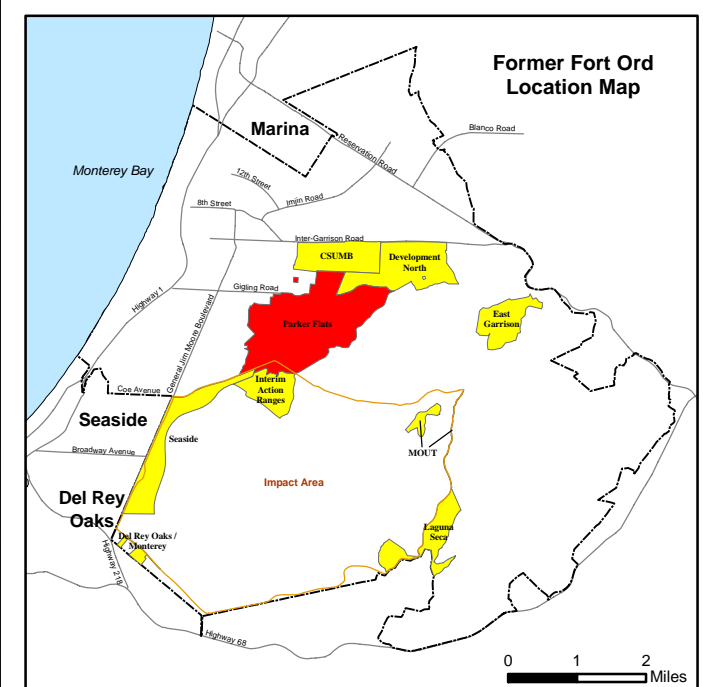
Legend



- Munitions Response Area
- Munitions Response Site
- MRS-27A**
- Firing Range
- Major Road
- Phase I Parker Flats RI/FS

MEC Type

- ◆ Unexploded Ordnance (UXO)
- ▲ Discarded Military Munition (DMM)
- + Insufficient Data (ISD)
- Burial Pit Containing MEC

Note: MEC locations may include more than one item.



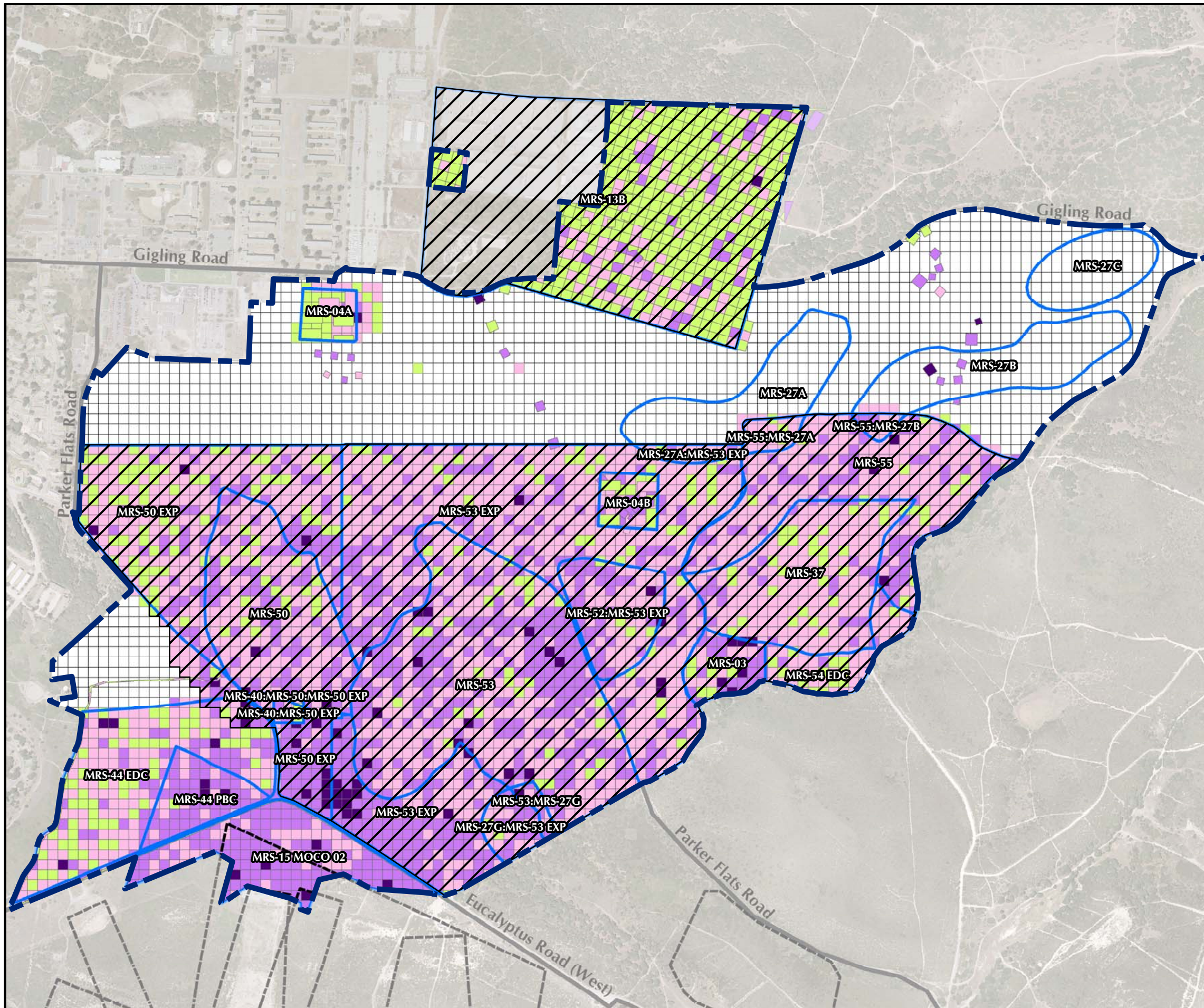
Westcliffe
Engineers, Inc.

**Parker Flats MRA Release Profile
MEC Locations**

FORA ESCA RP
Monterey County, California

Figure 5.3-2

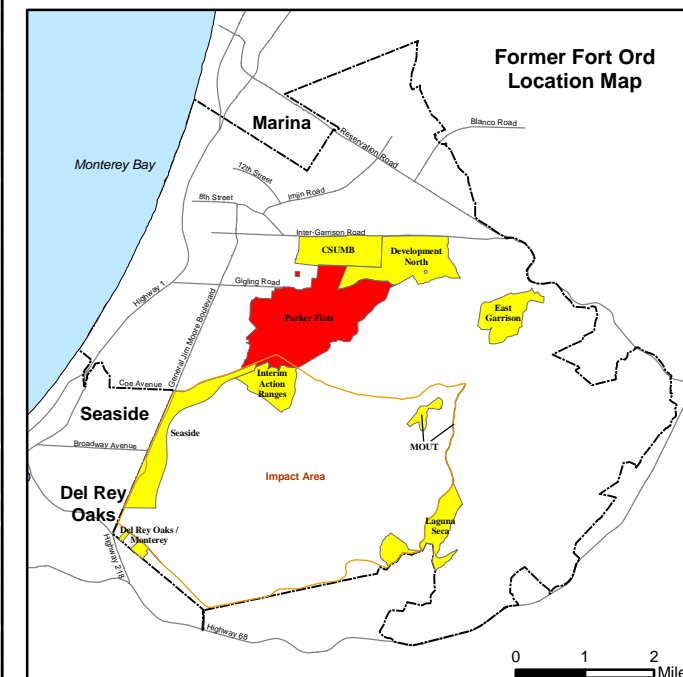
T:\Projects\SEDR\Parker Flats\MXD\5_3-3 Release Profile MD Locations.mxd - 10/1/2008 @ 9:55:15 AM



Legend

- Munitions Response Area
 - MRS-27A Munitions Response Site
 - Firing Range
 - Major Road
 - Phase I Parker Flats RI/FS
- Munitions Debris (MD) by Weight (total pounds per grid)**
- No Data
 - 0
 - < 10
 - 10 to 100
 - > 100

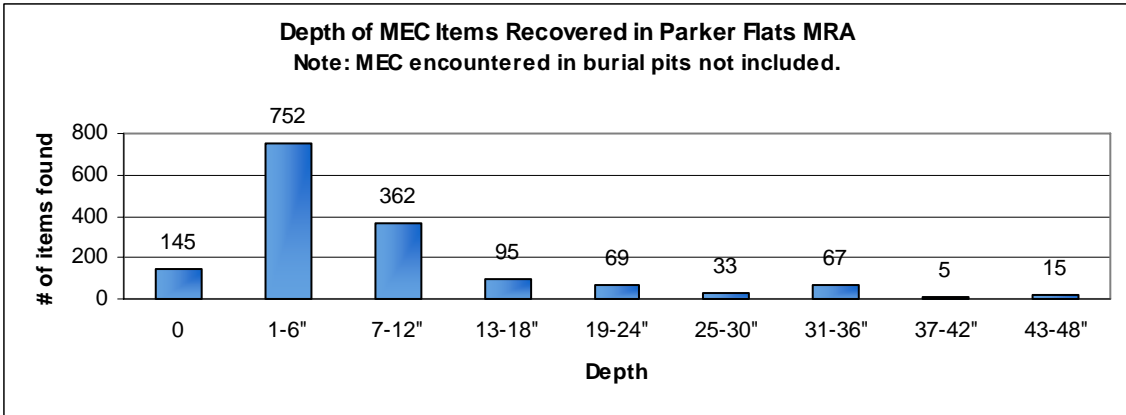
Note: Munitions Debris (MD) includes scrap related to small arms ammunition.



Parker Flats MRA Release Profile MD Locations

FORA ESCA RP
Monterey County, California

Figure 5.3-3



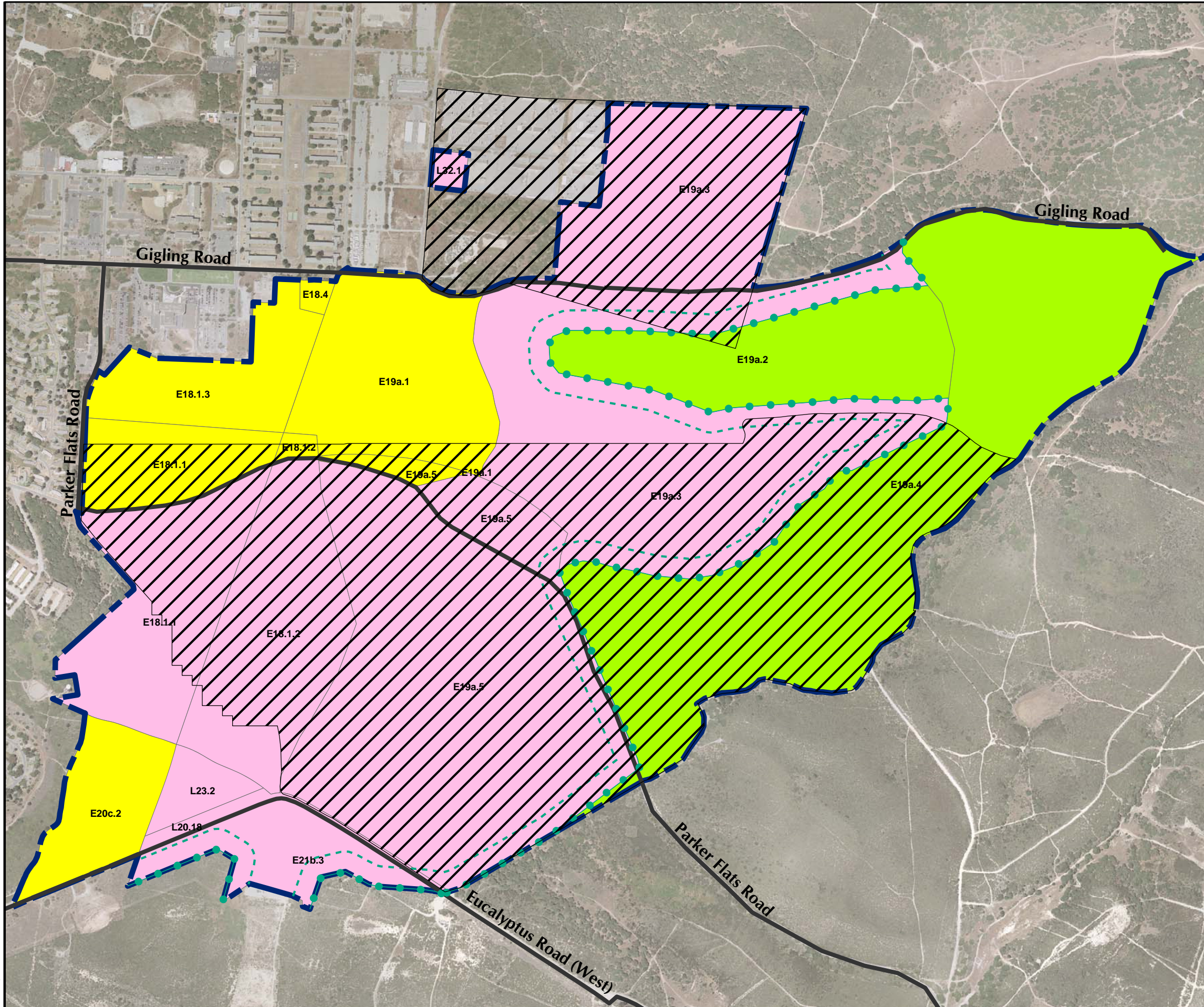
**Westcliffe
 Engineers, Inc.**

**Parker Flats MRA
 Distribution of MEC
 Recovered by Depth Interval**

FORA ESCA RP
 Monterey County, California

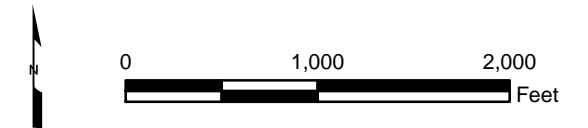
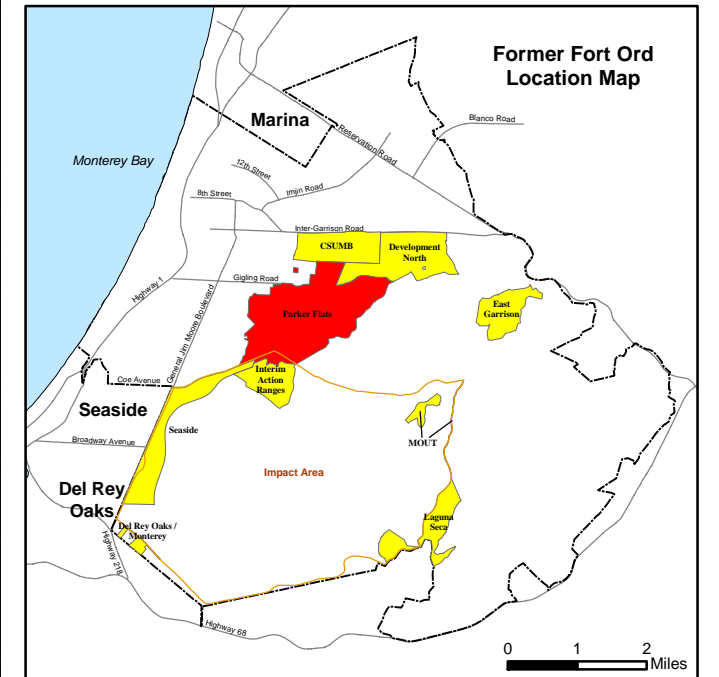
Figure 5.3-4

T:\Projects\SEDR\Parker Flats\MXD\5_4-1 Land Use Profile Reuse Plan.mxd - 10/1/2008 @ 9:59:25 AM



Legend

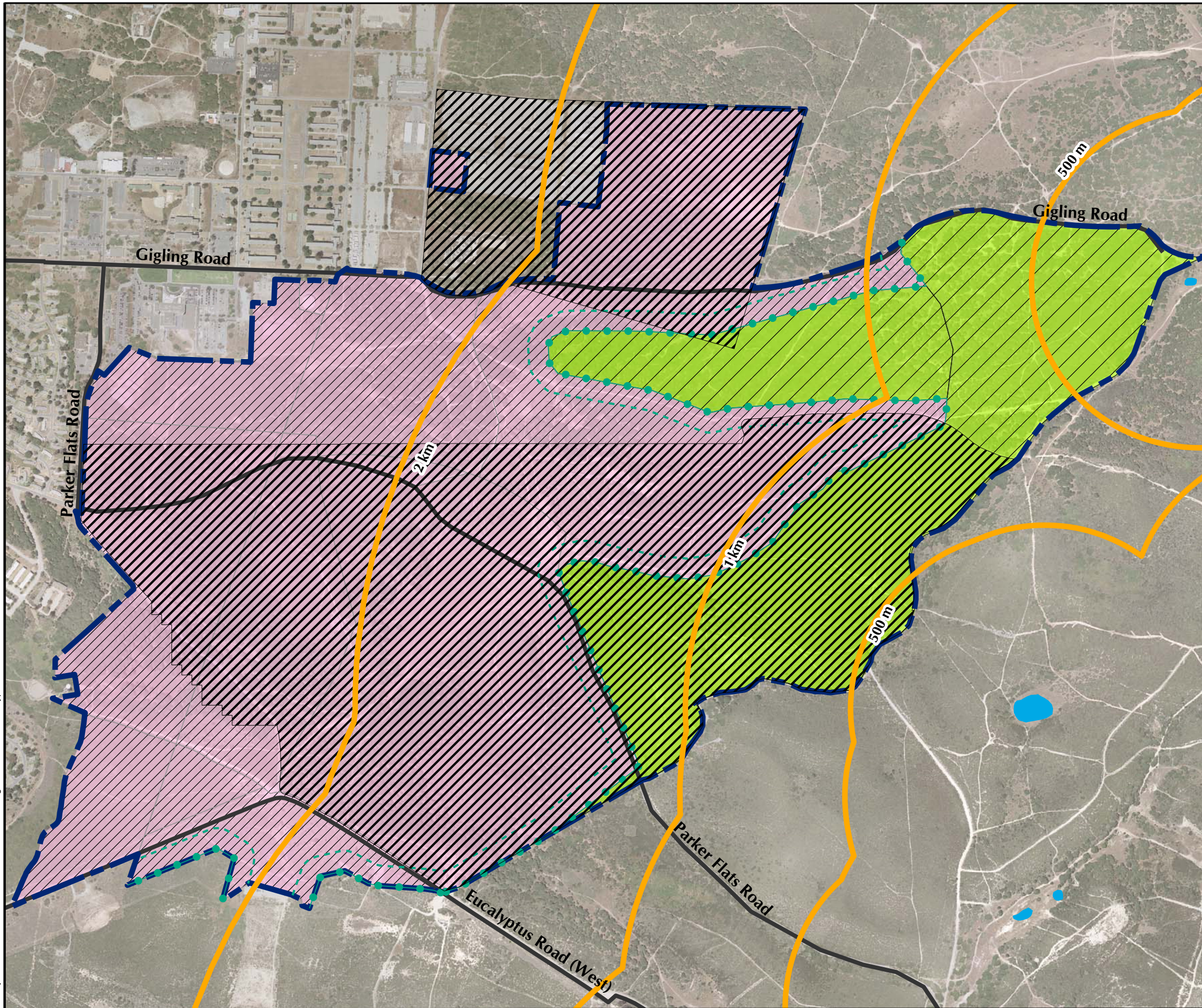
- Munitions Response Area
 - Major Road
 - E19a.1 USACE Parcel
 - Phase I Parker Flats RI/FS
- ### Future Land Use
- Residential
 - Non-Residential
 - Habitat Reserve
 - Borderland Interface
 - 200-Foot Buffer from Borderland Interface



**Parker Flats MRA
Land Use Profile
Reuse Plan**
FORA ESCA RP
Monterey County, California

Figure 5.4-1





T:\Projects\SEDR\Parker Flats\MXD\5.5-1 Ecological Profile Habitat Type.mxd - 10/1/2008 @ 9:59:27 AM

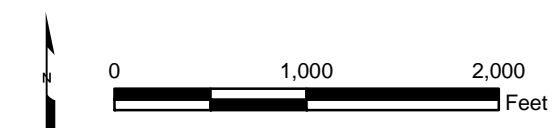
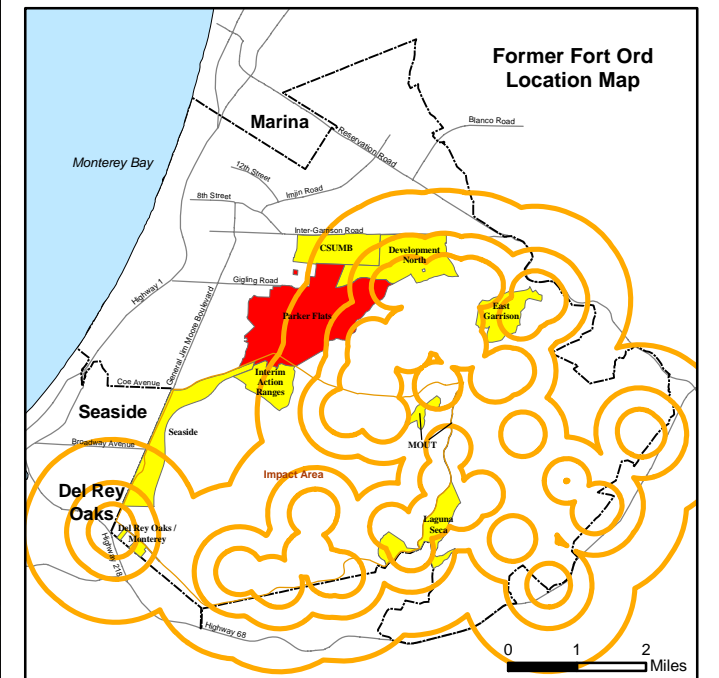


Legend

-  Munitions Response Area
-  California Tiger Salamander Buffer
-  Major Road
-  Borderland Interface
-  200-Foot Buffer from Borderland Interface
-  Aquatic Features
-  Phase I Parker Flats RI/FS

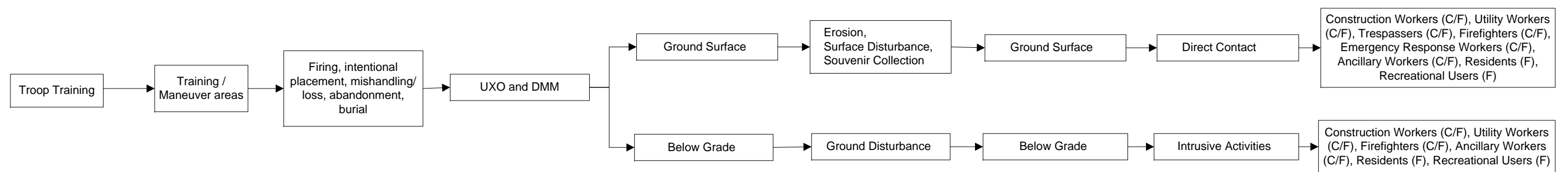
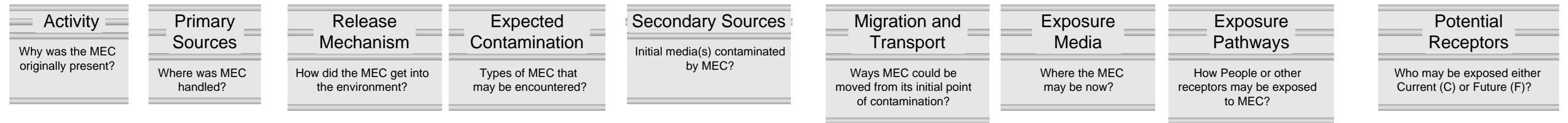
Habitat Management Plan Category

-  Development (includes future Residential and Non-Residential areas)
-  Development with Reserve or Restrictions
-  Habitat Corridor
-  Habitat Corridor with Development
-  Habitat Reserve



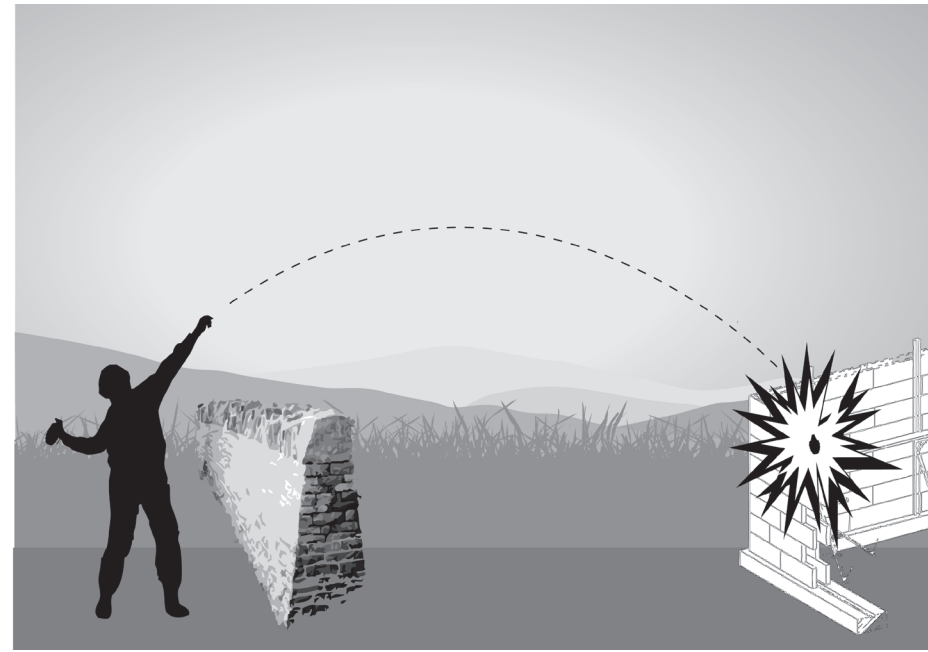
**Parker Flats MRA
Ecological Profile
Habitat Type**
FORA ESCA RP
Monterey County, California

Figure 5.5-1



**Parker Flats MRA
Pathway Analysis
Flowchart**
FORA ESCA RP
Monterey County, California

Figure 5.6-1



Thrown Ordnance



Burial / Mishandling / Loss



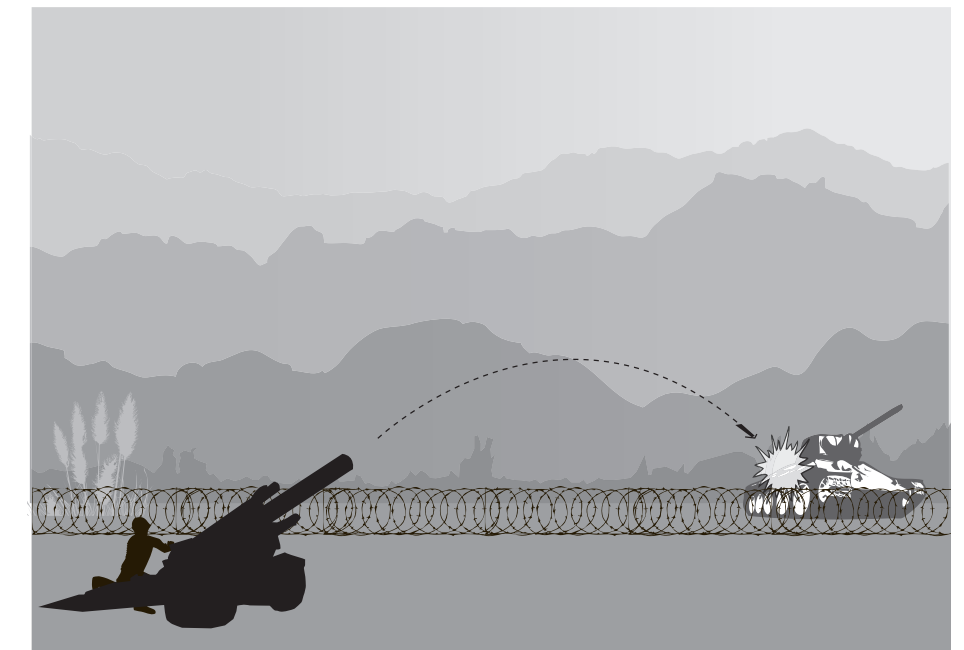
Firing



Direct Fire



Indirect Fire



Indirect Fire