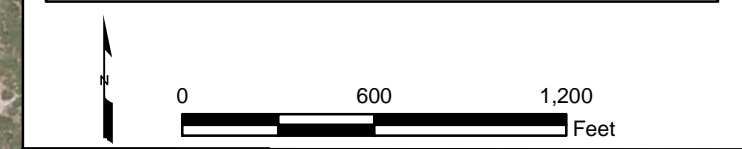
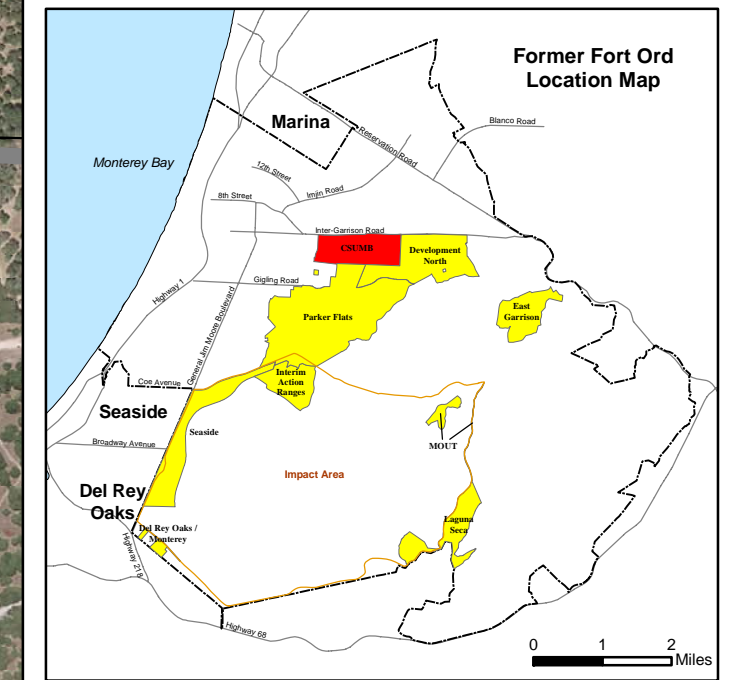
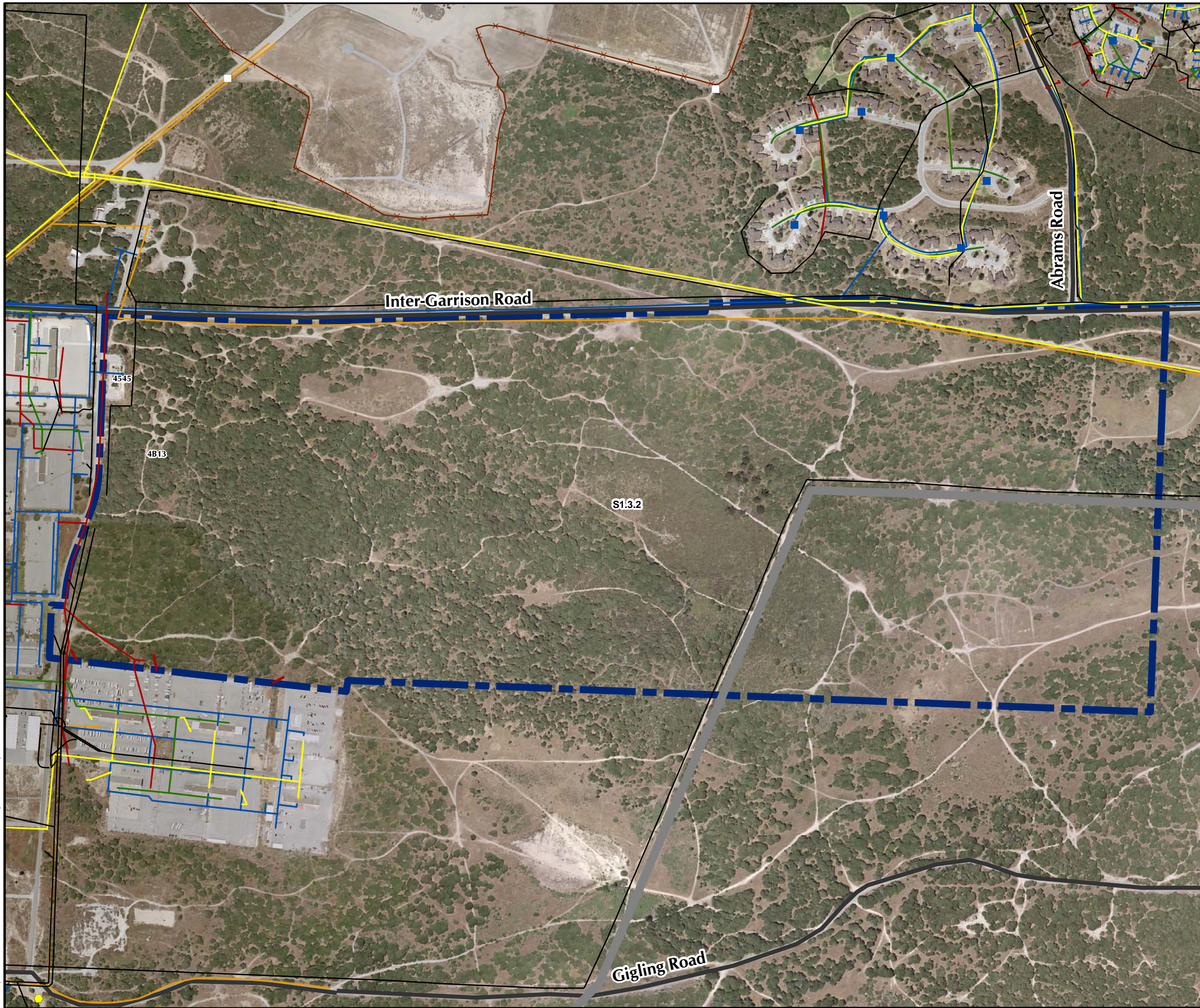




T:\Projects\SED\CSUMB\MXD\6.1-1 Facility Profile Physical Features.mxd - 6/3/2008 @ 4:30:22 PM



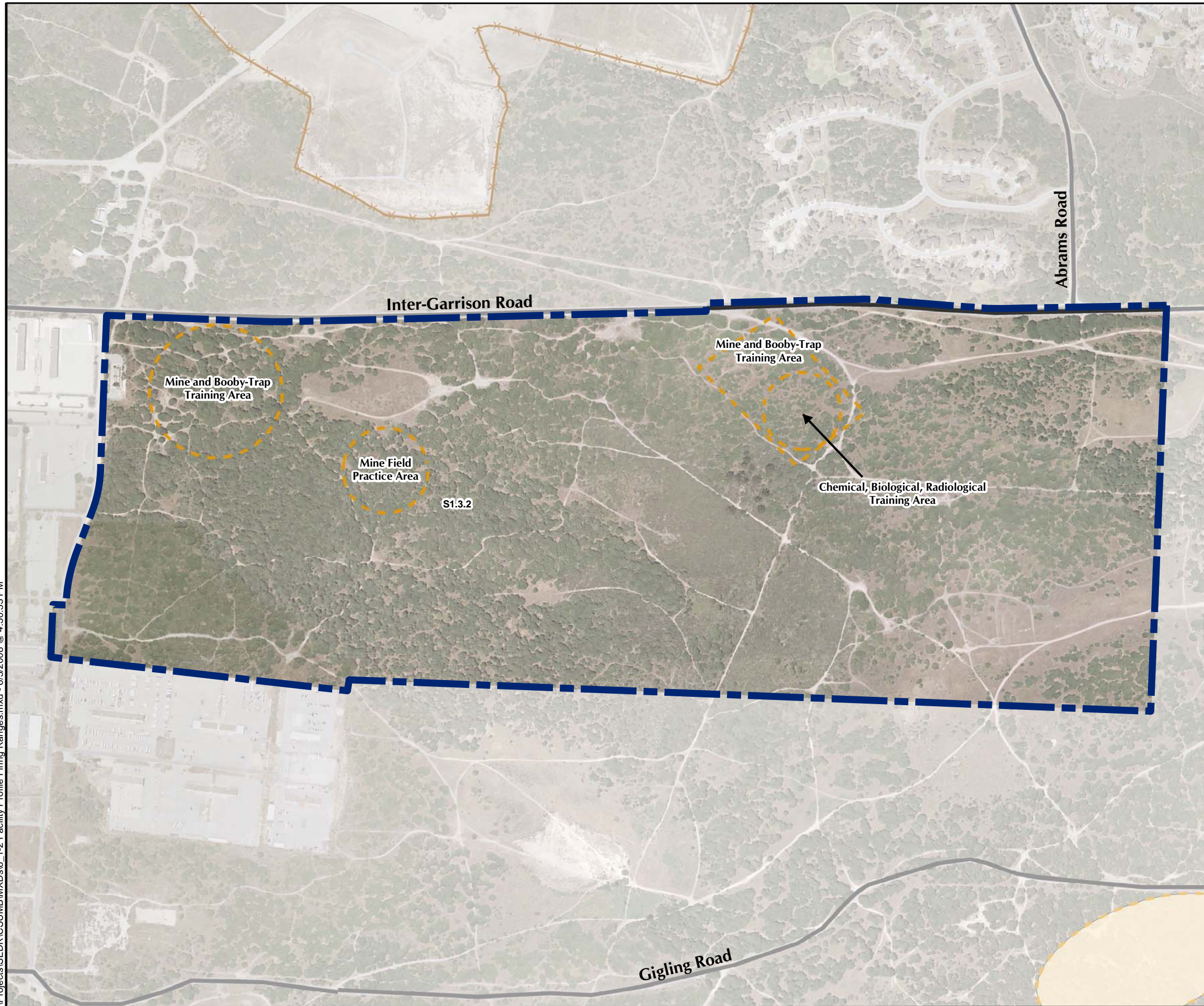
Westcliffe Engineers, Inc.

**CSUMB MRA Facility Profile
Physical Features**

FORA ESCA RP
Monterey County, California

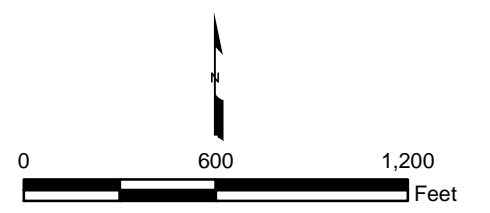
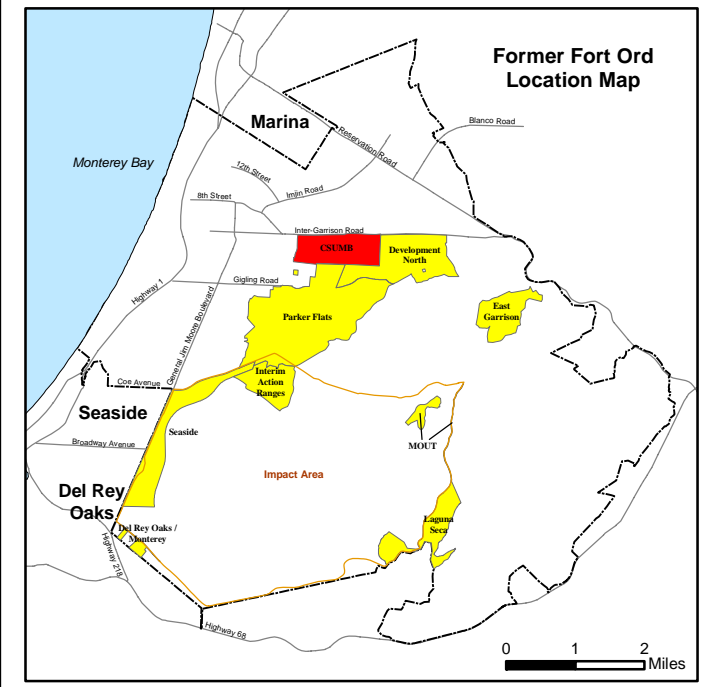
Figure 6.1-1

T:\Projects\SEDR\CSUMB\MXDs\6_1-2 Facility Profile Firing Ranges.mxd - 6/3/2008 @ 4:30:33 PM



Legend

- Training Site
- Munitions Response Area
- Historical Training Site
- Major Road
- Fence

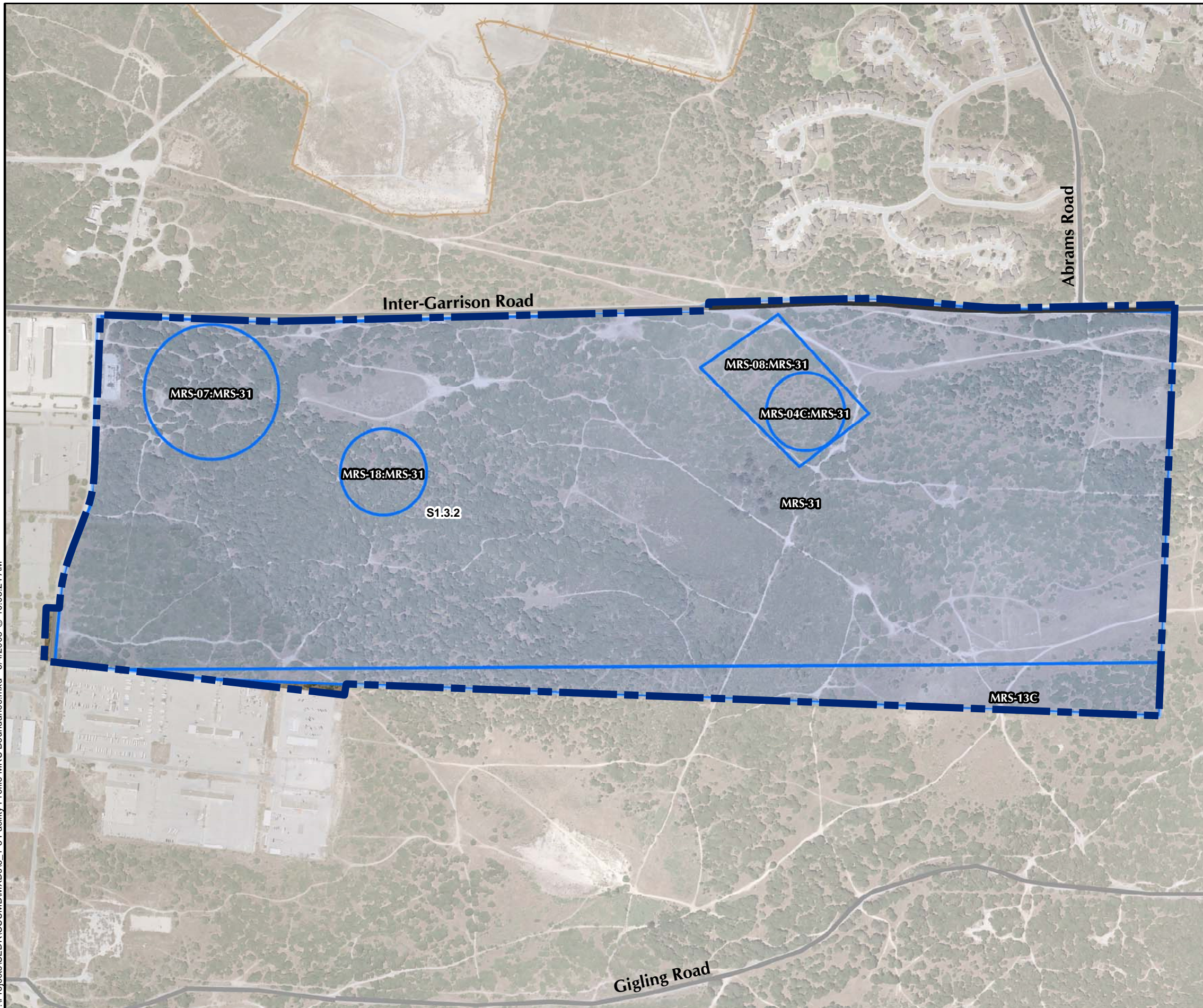


CSUMB MRA Facility Profile Ranges and Training Sites

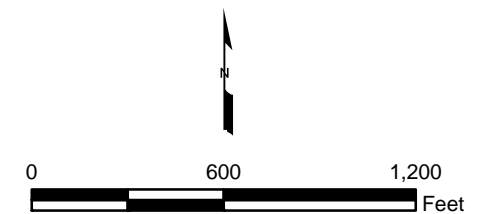
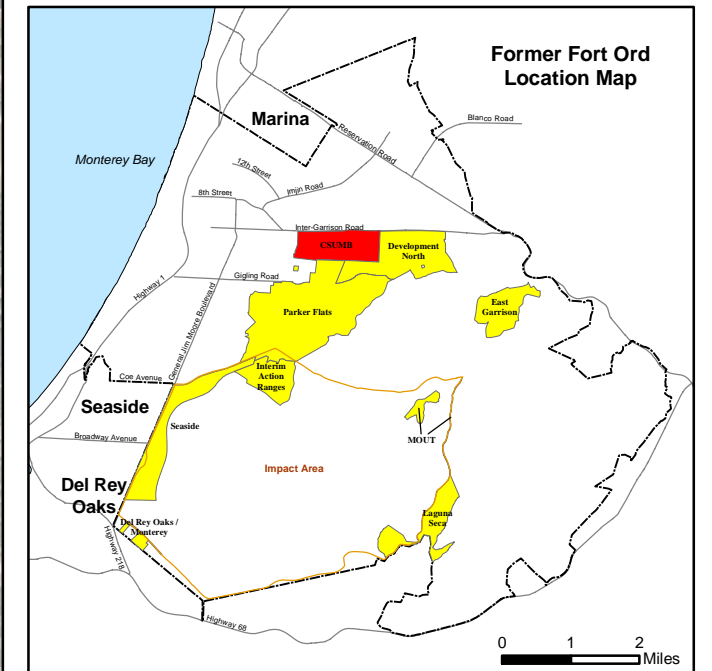
FORA ESCA RP
Monterey County, California

Figure 6.1-2

T:\Projects\SEDR\CSUMB\MXDs\6_1-3 Facility Profile MRS Boundaries.mxd - 6/4/2008 @ 10:05:24 AM



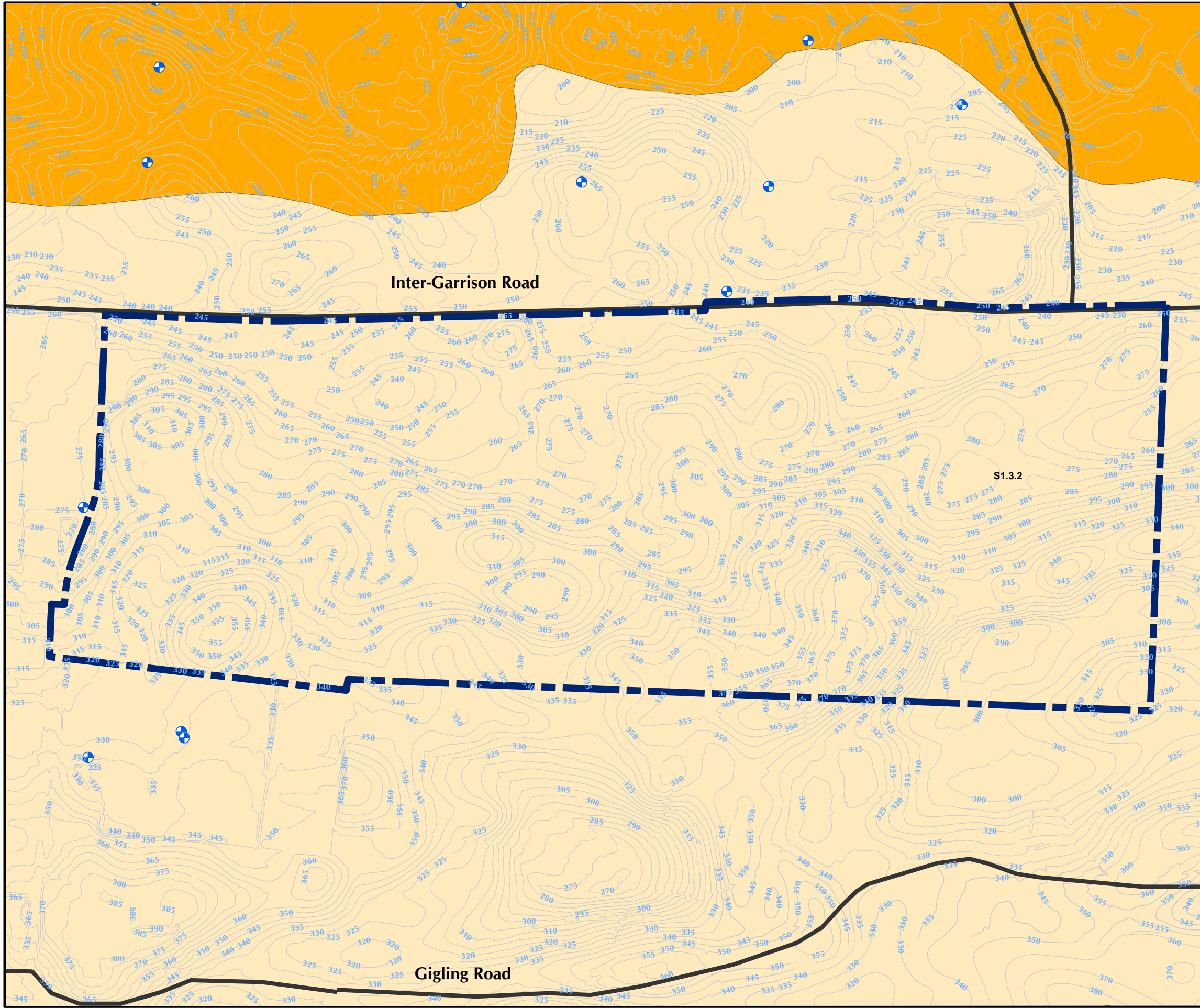
- ### Legend
-  Munitions Response Area
 -  Major Road
 -  Fence
 -  MRS-31
 -  Munitions Response Site








**CSUMB MRA Facility Profile
Munitions Response Site Boundaries**

FORA ESCA RP
Monterey County, California

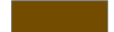


Figure 6.1-3

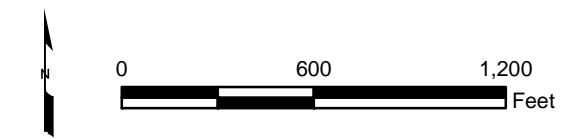
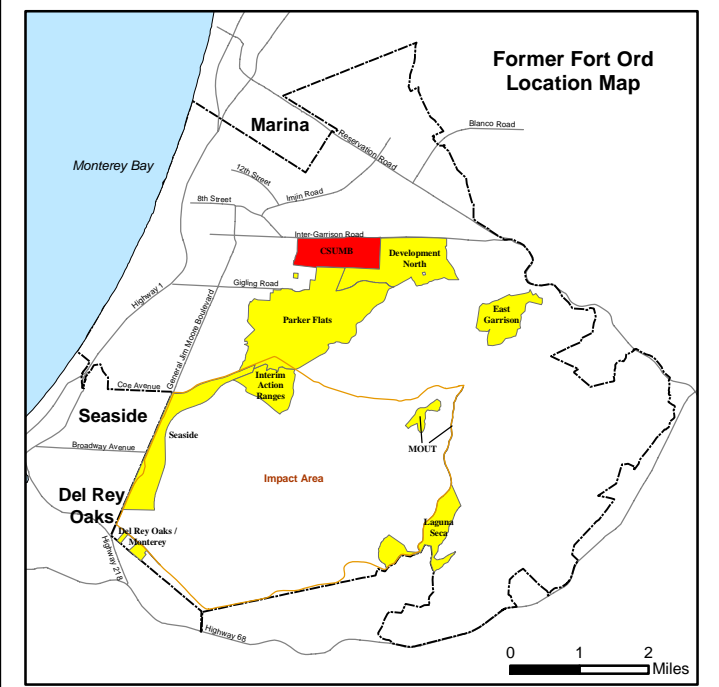


Legend

-  Environmental Well
-  Munitions Response Area
-  Major Road
-  Topography 5ft
-  540

Soil Type

-  Arnold-Santa Ynez Complex
-  Baywood Sand, 2 to 15 Percent Slopes
-  Oceano Loamy Sand, 2 to 15 Percent Slopes

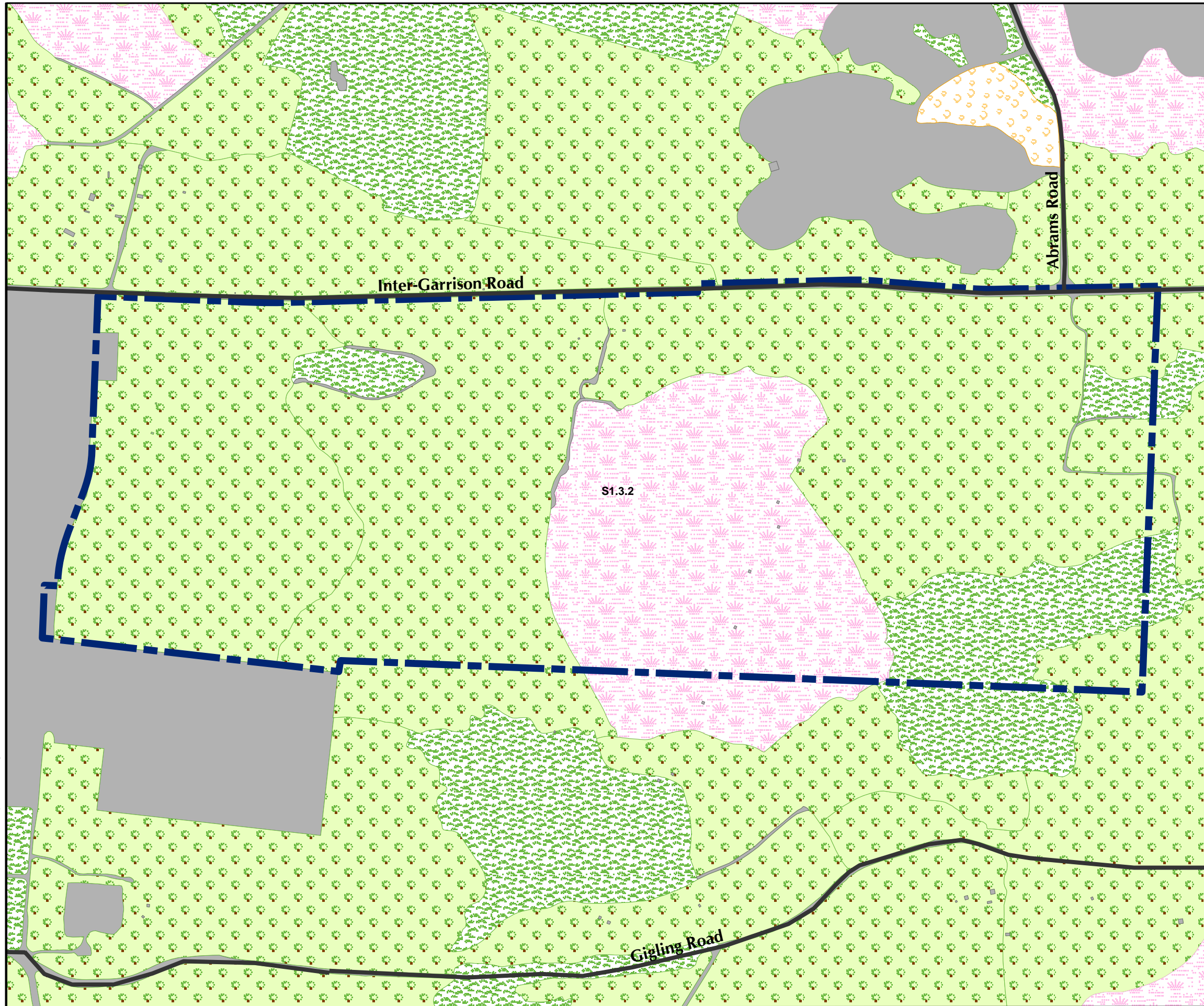


**CSUMB MRA Physical Profile
Topography and Soil Type**



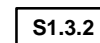
FORA ESCA RP
Monterey County, California

Figure 6.2-1

T:\Projects\SED\CSUMB\MXDs\6_2-2 Facility Profile Vegetation Communities.mxd - 6/3/2008 @ 4:36:57 PM



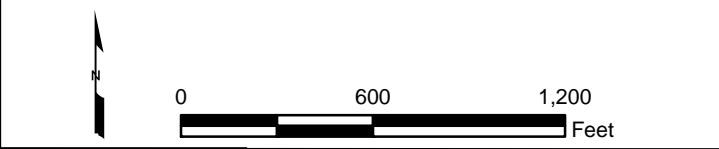
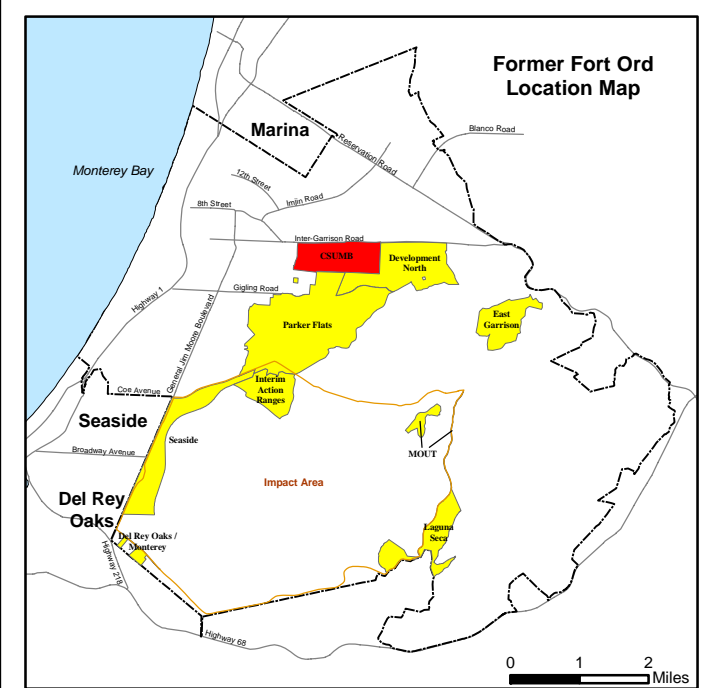
Legend

-  Munitions Response Area
-  Major Road
-  USACE Parcel

Vegetation Type

-  Grassland
-  Maritime Chaparral
-  Inland Coast Live Oak Woodland
-  Coastal Coast Live Oak Woodland
-  Developed / Disturbed

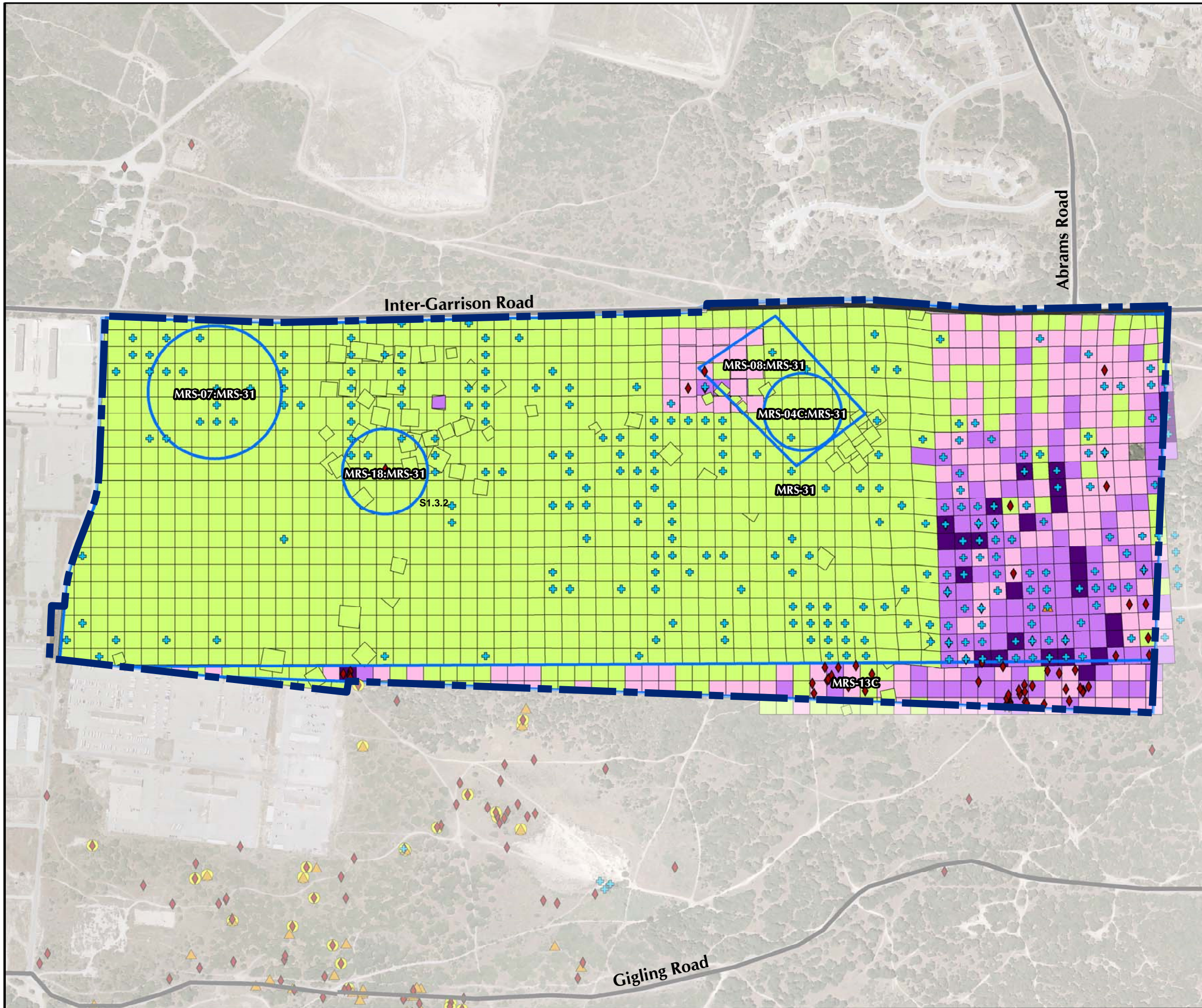
Source: Flora and Fauna Baseline Study of Fort Ord, California, Jones and Stokes Association Inc., December 1992.



**CSUMB MRA Physical Profile
Generalized Vegetation Communities**

FORA ESCA RP
Monterey County, California

Figure 6.2-2



Legend

- Munitions Response Area
- Munitions Response Site
- Major Road

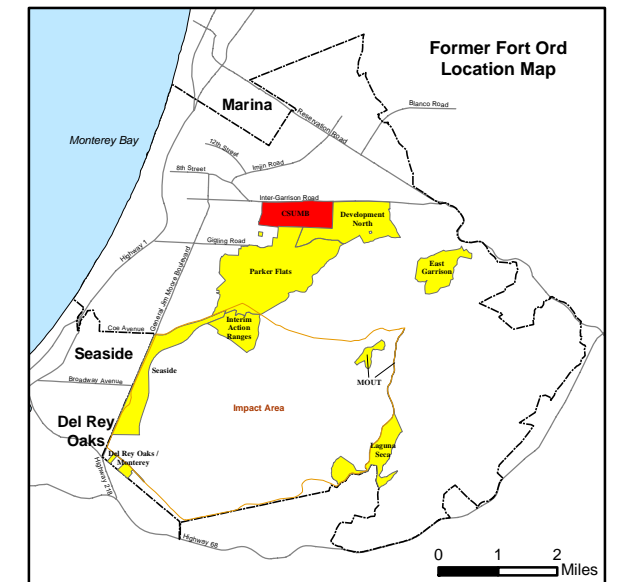
MEC Type

- ◆ Unexploded Ordnance (UXO)
- ▲ Discarded Military Munition (DMM)
- + Insufficient Data (ISD)
- Burial Pit Containing MEC

Munitions Debris (MD) by Weight (total pounds per grid)

- No Data
- 0
- < 10
- 10 to 100
- > 100

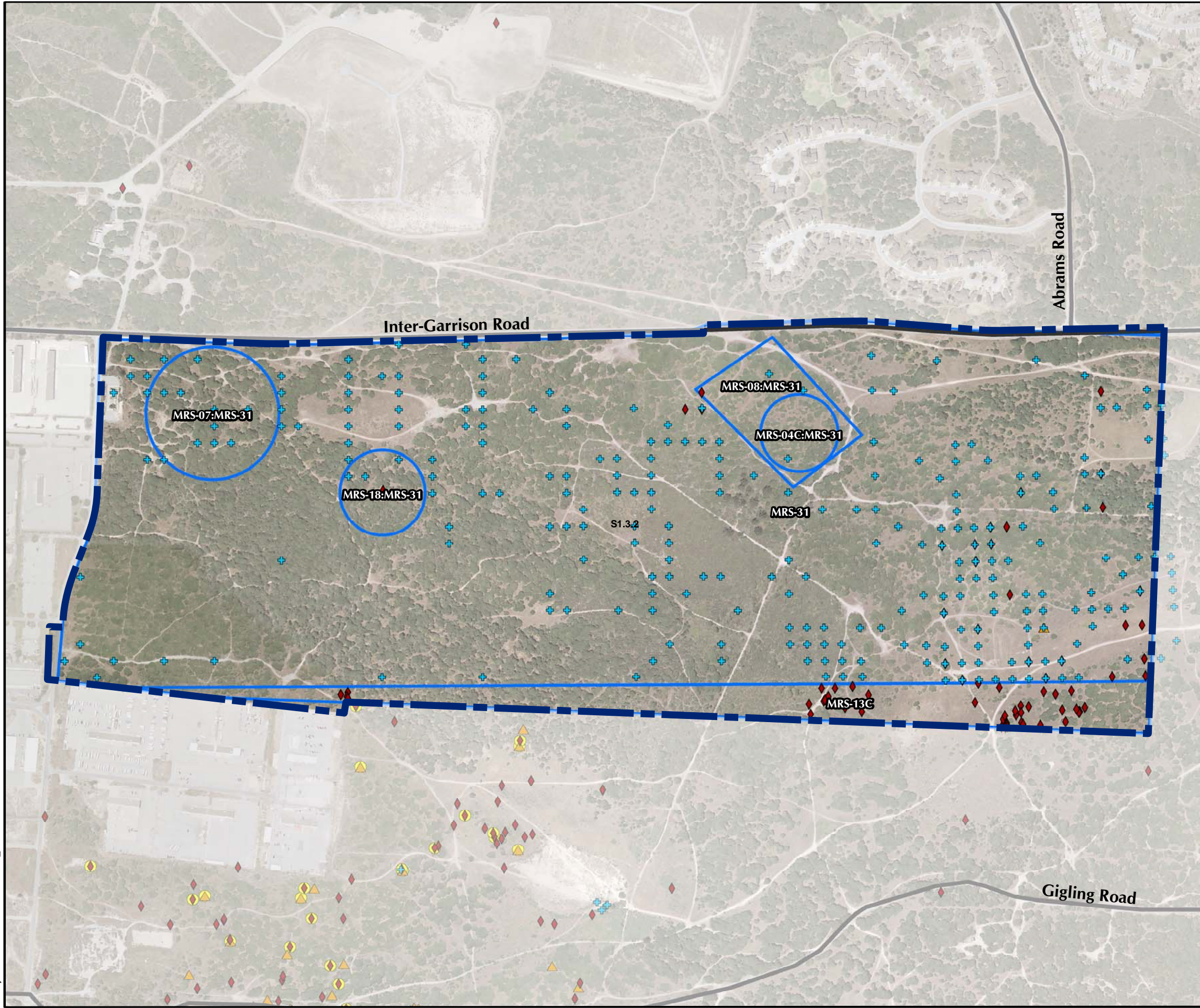
Notes: Munitions Debris (MD) includes scrap related to small arms ammunition. Locations of items were assigned to the center of the grids, for display purposes.



**CSUMB MRA Release Profile
MEC and MD Locations**
FORA ESCA RP
Monterey County, California

Figure 6.3-1

T:\Projects\SEDR\CSUMB\MXD\6_3-2 Release Profile MEC Locations.mxd - 6/3/2008 @ 4:40:11 PM



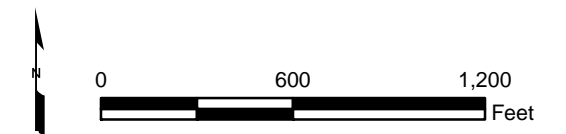
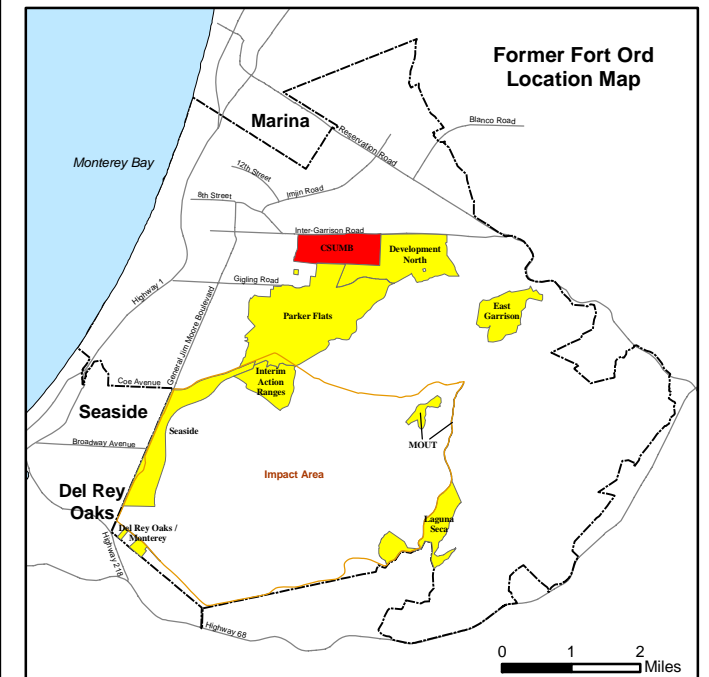
Legend

- ▬▬▬ Munitions Response Area
- ▬ Munitions Response Site
- MRS-31 Major Road

MEC Type

- ◆ Unexploded Ordnance (UXO)
- ▲ Discarded Military Munition (DMM)
- + Insufficient Data (ISD)
- Burial Pit Containing MEC

Notes: MEC locations may include more than one item. Locations of items were assigned to the center of the grids, for display purposes.

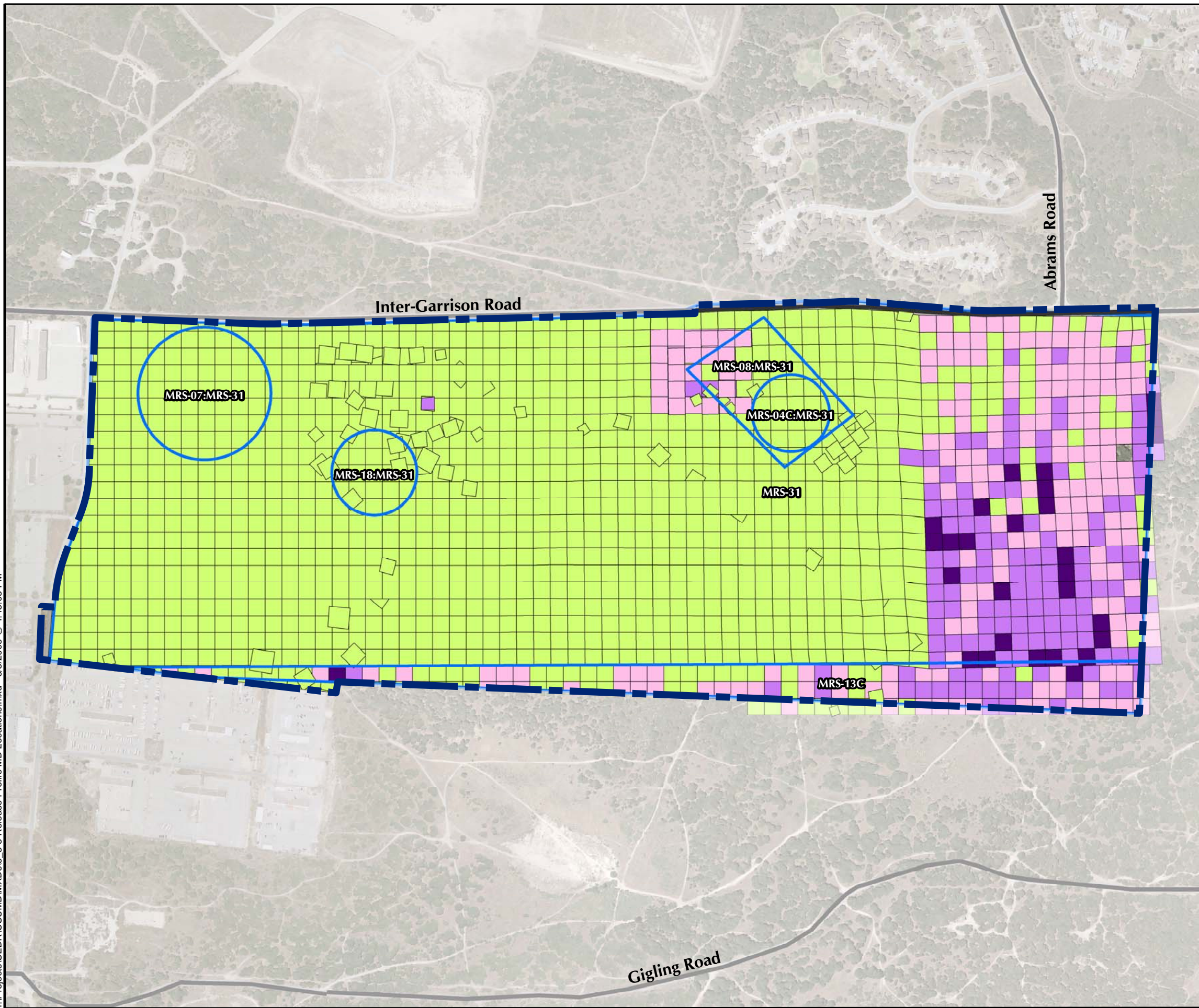


**CSUMB MRA Release Profile
MEC Locations**

FORA ESCA RP
Monterey County, California

Figure 6.3-2

T:\Projects\SED\CSUMB\MXD\6_3-3 Release Profile MD Locations.mxd - 6/3/2008 @ 4:45:03 PM



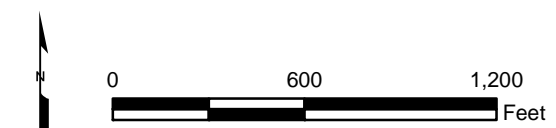
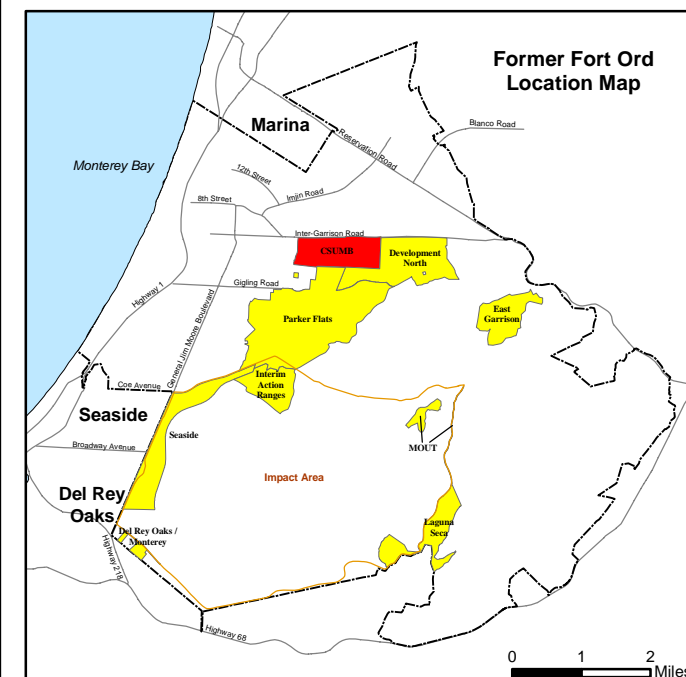
Legend

- Munitions Response Area
- Munitions Response Site
- Major Road

Munitions Debris (MD) by Weight (total pounds per grid)

- No Data
- 0
- < 10
- 10 to 100
- > 100

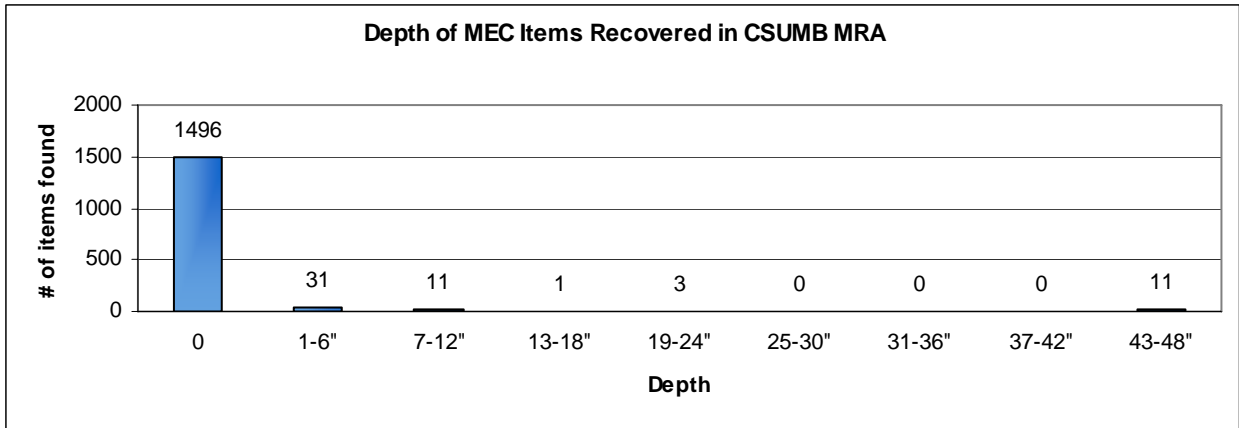
Note: Munitions Debris (MD) includes scrap related to small arms ammunition.



CSUMB MRA Release Profile MD Locations

FORA ESCA RP
Monterey County, California

Figure 6.3-3



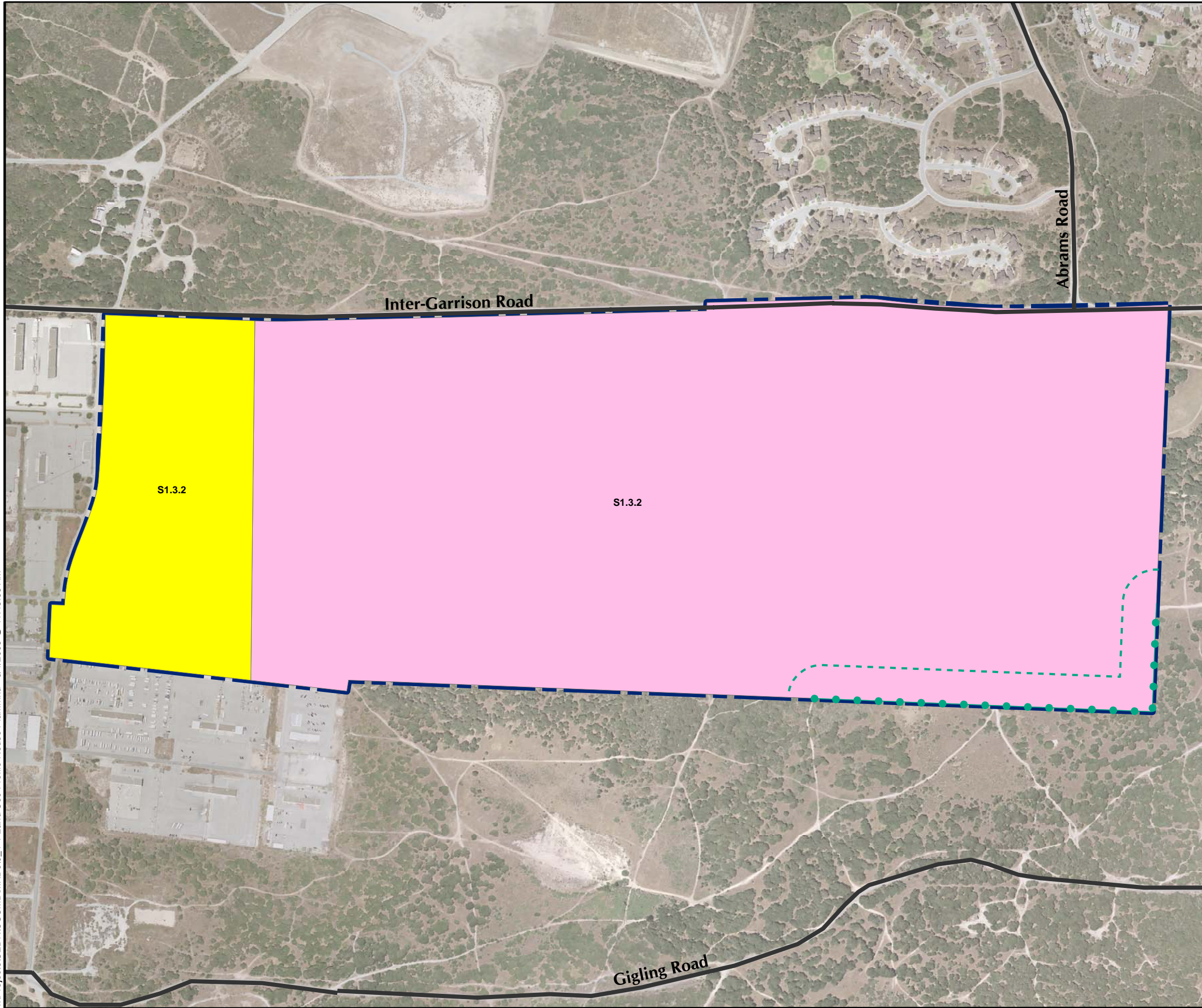
**Westcliffe
Engineers, Inc.**

**CSUMB MRA
Distribution of MEC
Recovered by Depth Interval**



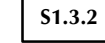
FORA ESCA RP
Monterey County, California

Figure 6.3-4





T:\projects\SED\CSUMB\MXD\6_4-1 Land Use Profile Reuse Plan.mxd - 6/4/2008 @ 11:45:58 AM

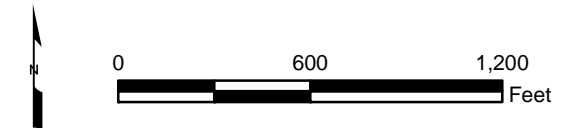
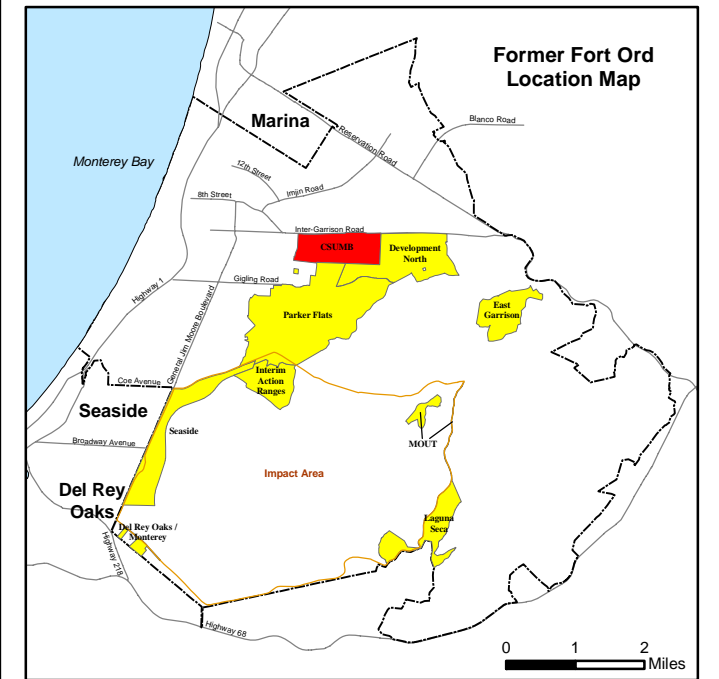


Legend

-  Munitions Response Area
-  Major Road
-  S1.3.2 USACE Parcel

Future Land Use

-  Residential (CSUMB Campus Housing)
-  Non-Residential (CSUMB Open Space Park)
-  Borderland Interface
-  200-Foot Buffer from Borderland Interface

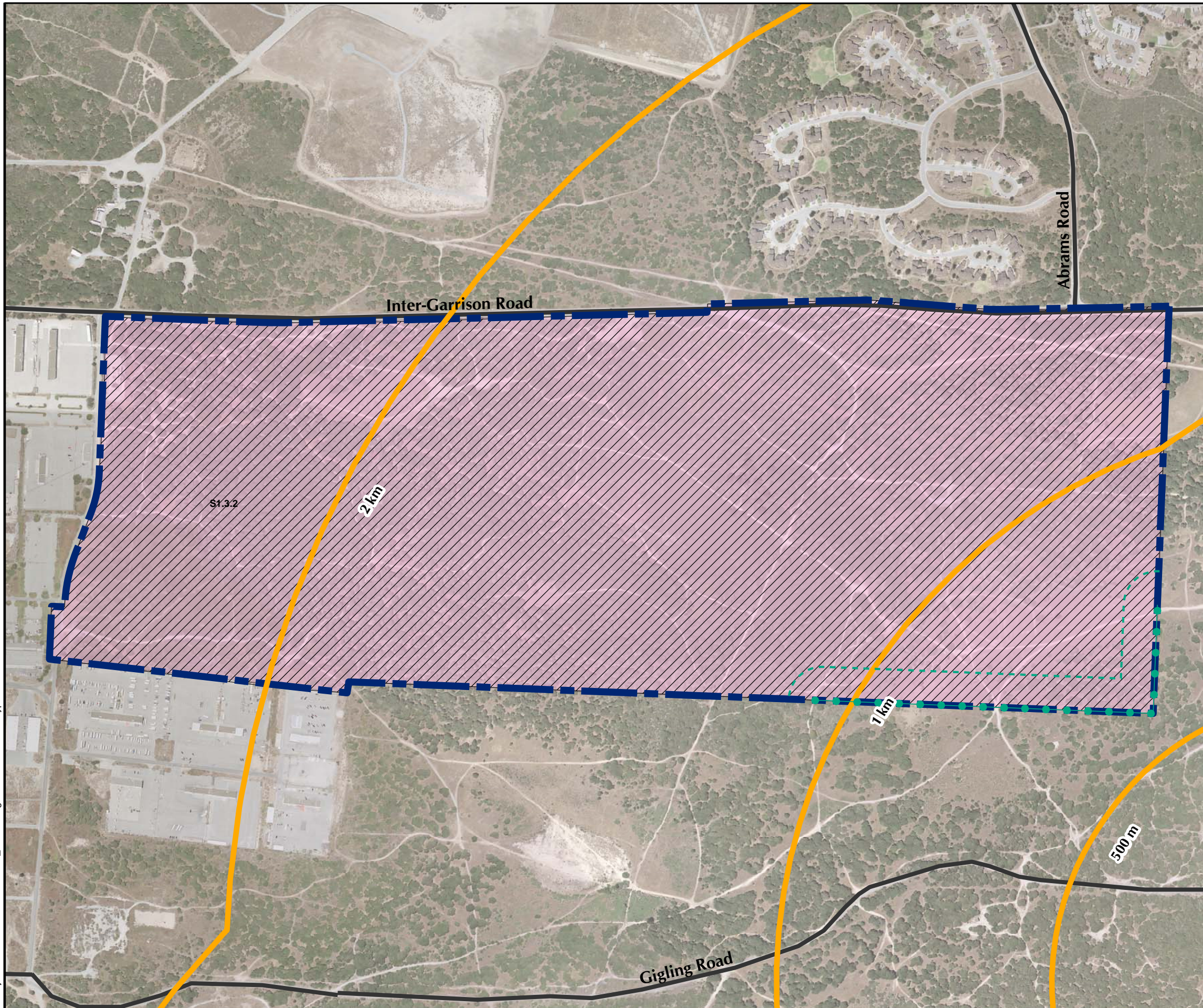


**CSUMB MRA
Land Use Profile Reuse Plan**






FORA ESCA RP
Monterey County, California

Figure 6.4-1

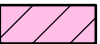




T:\Projects\SED\CSUMB\MXDs\6_5-1 Ecological Profile Habitat Type.mxd - 6/4/2008 @ 11:48:03 AM

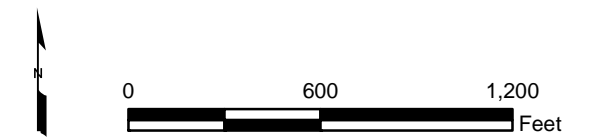
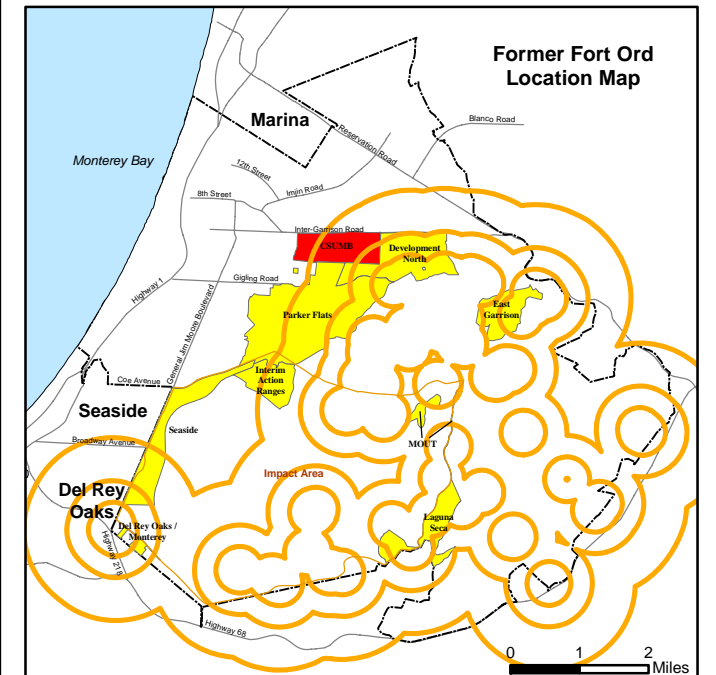


Legend

-  Munitions Response Area
-  California Tiger Salamander Buffer
-  Major Road
-  Borderland Interface
-  200-Foot Buffer from Borderland Interface

Habitat Management Plan Category

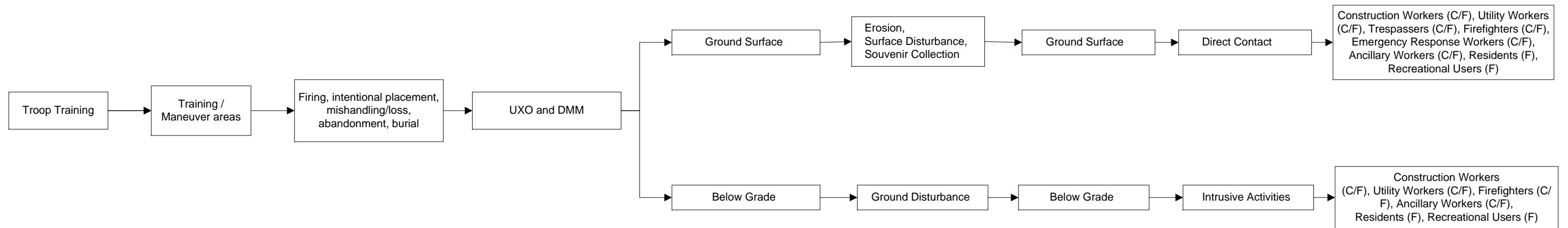
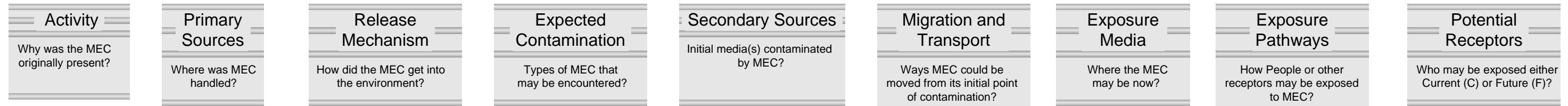
-  Development (includes future Residential and Non-Residential areas)
-  Development with Reserve or Restrictions
-  Habitat Corridor
-  Habitat Corridor with Development
-  Habitat Reserve



CSUMB MRA Ecological Profile Habitat Type

FORA ESCA RP
Monterey County, California

Figure 6.5-1



**CSUMB MRA
Pathway Analysis
Flowchart**
FORA ESCA RP
Monterey County, California

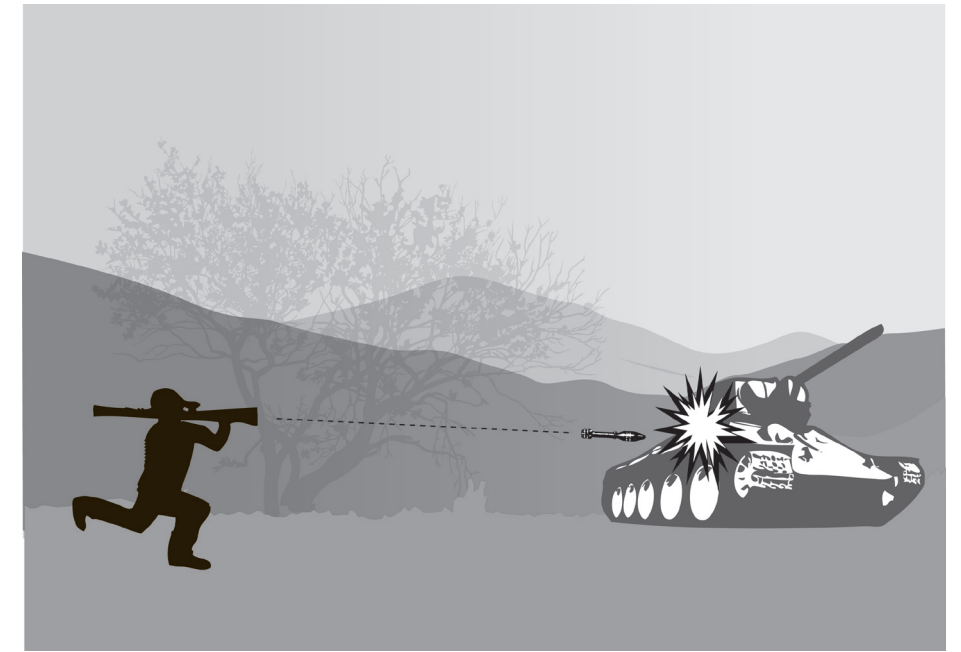
Figure 6.6-1



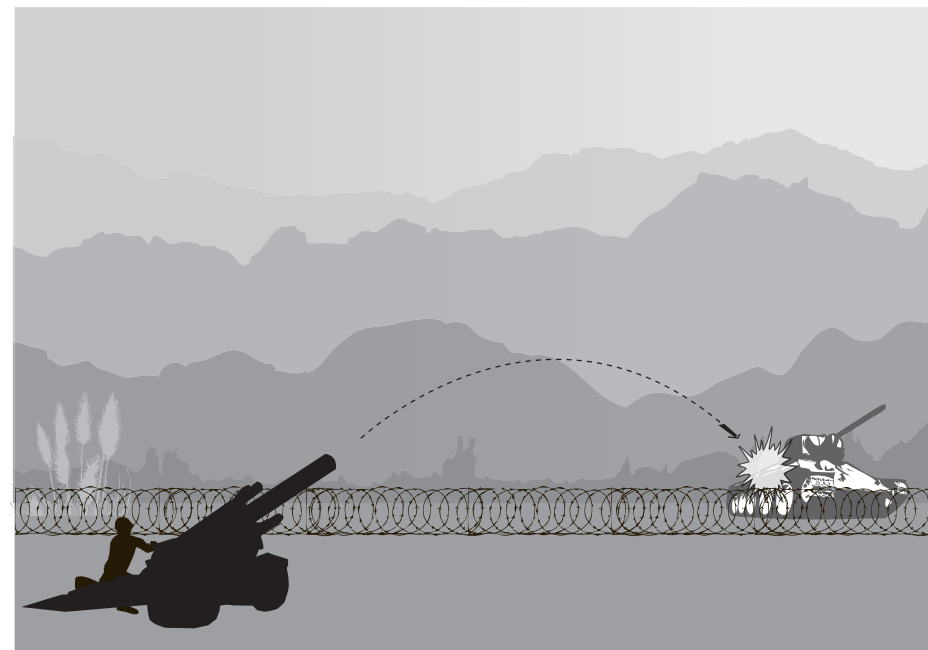
Burial / Mishandling / Loss



Troop Training



Direct Fire



Indirect Fire