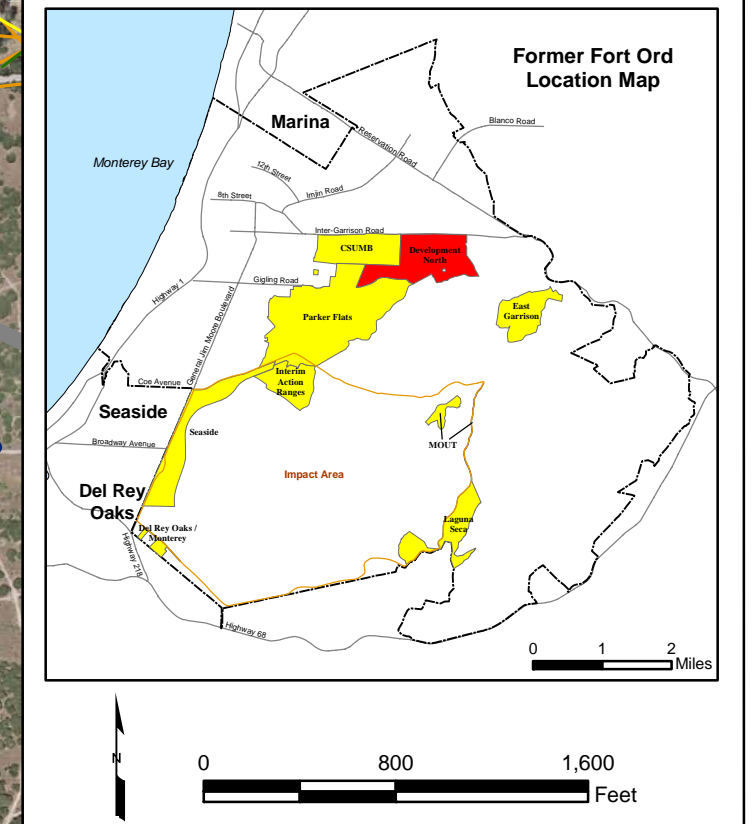
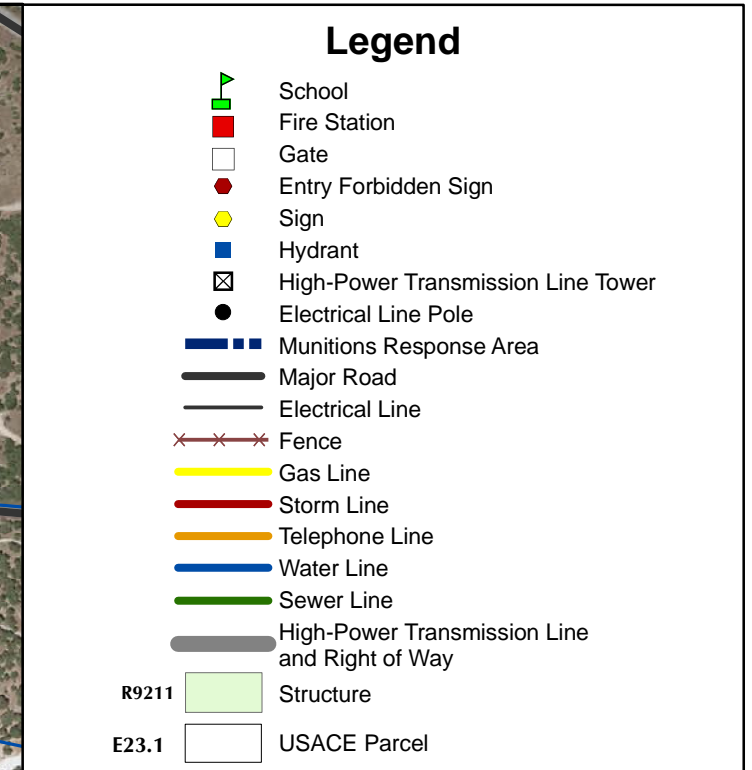




T:\Projects\SED\Development North\MXDs\7_1-1 Facility Profile Physical Features.mxd - 10/1/2008 @ 11:26:49 AM



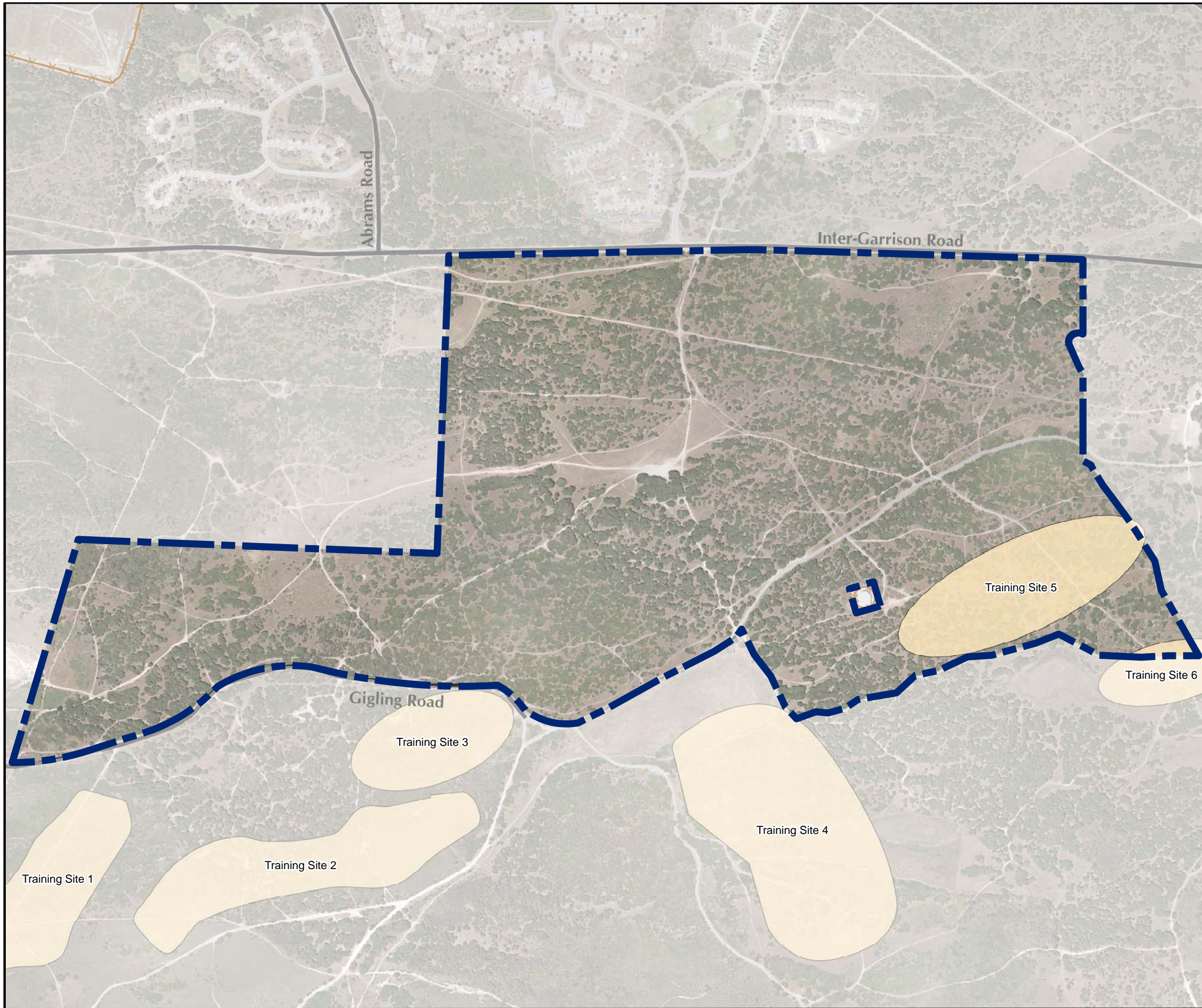
**Westcliffe
Engineers, Inc.**

**Development North MRA
Facility Profile Physical Features**

FORA ESCA RP
Monterey County, California

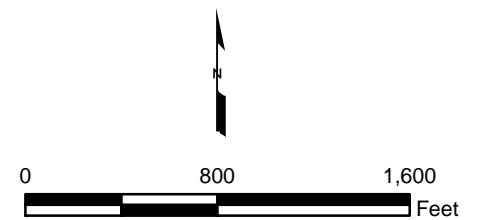
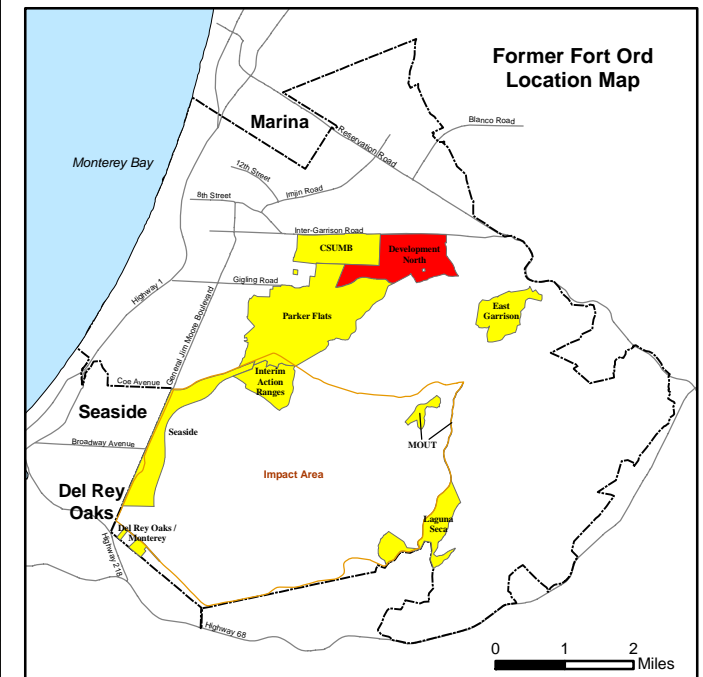
Figure 7.1-1

T:\Projects\SEDR\Development North\MXDs\7_1-2 Facility Profile Firing Ranges.mxd - 10/1/2008 @ 11:26:55 AM



Legend

- Training Site
- Munitions Response Area
- Major Road
- Fence

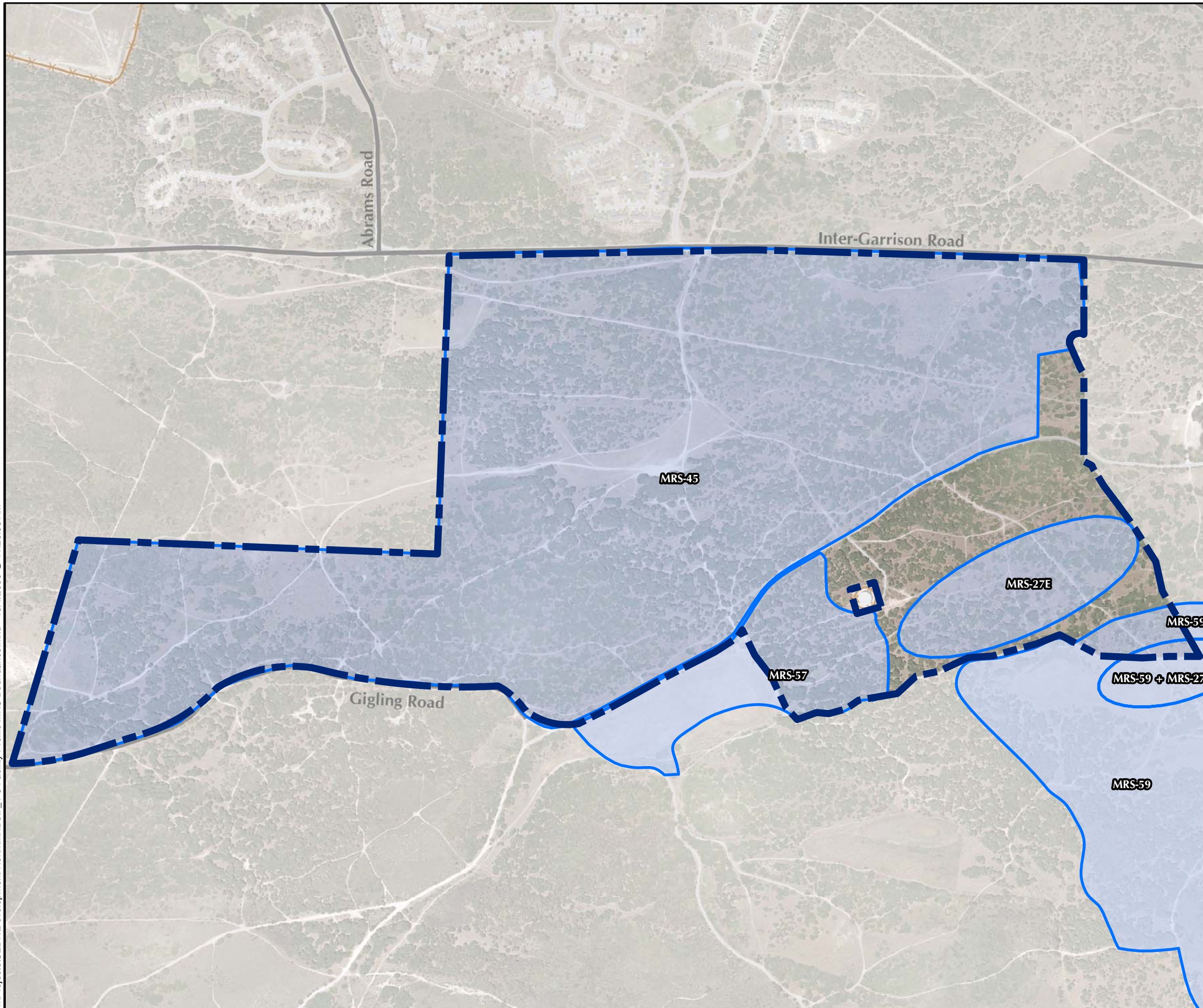




**Development North MRA
Facility Profile
Ranges and Training Sites**

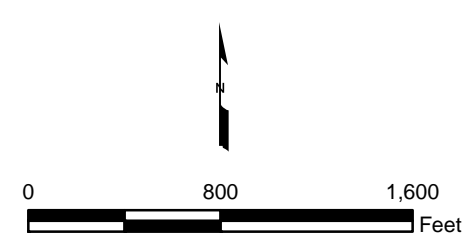
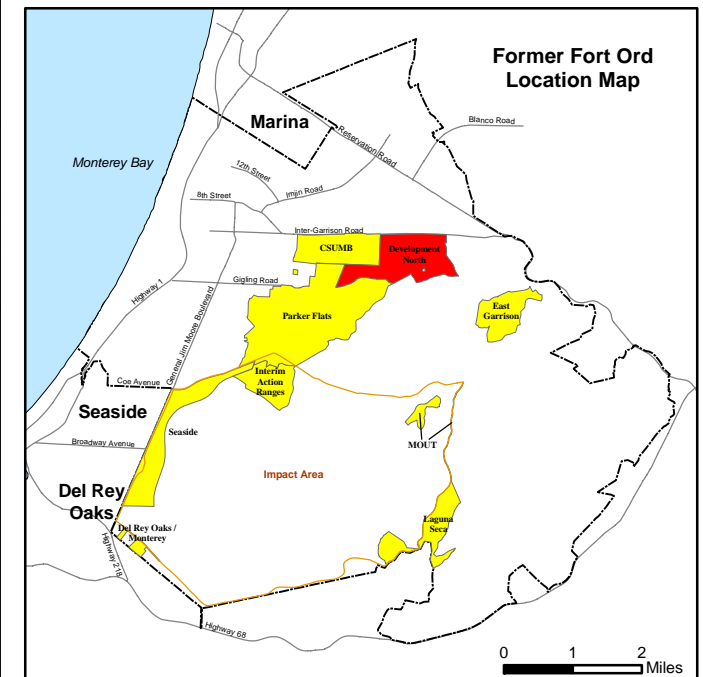
FORA ESCA RP
Monterey County, California

Figure 7.1-2

T:\Projects\SED\Development North\MXDs\Z_1-3 Facility Profile MRS Boundaries.mxd - 10/1/2008 @ 11:26:55 AM



- ### Legend
-  Munitions Response Area
 -  Major Road
 -  Fence
 -  Munitions Response Site





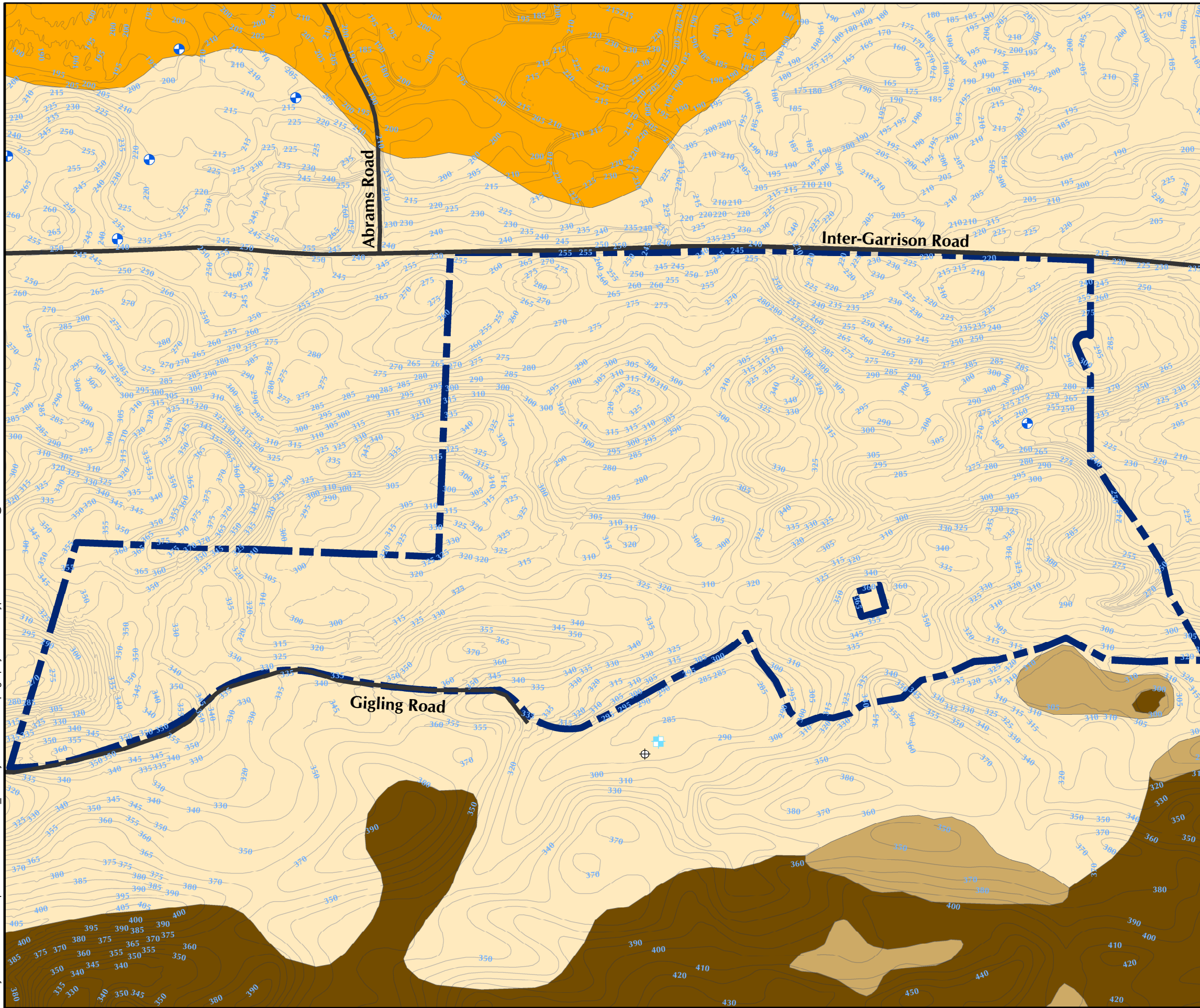
  Westcliffe Engineers, Inc.	Development North MRA Facility Profile Munitions Response Site Boundaries
	FORA ESCA RP Monterey County, California

Figure 7.1-3

T:\Projects\SEDR\Development North\MXDs\7_2-1 Physical Profile Topography and Soil Type.mxd - 10/1/2008 @ 11:59:04 AM

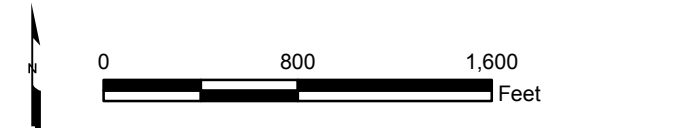
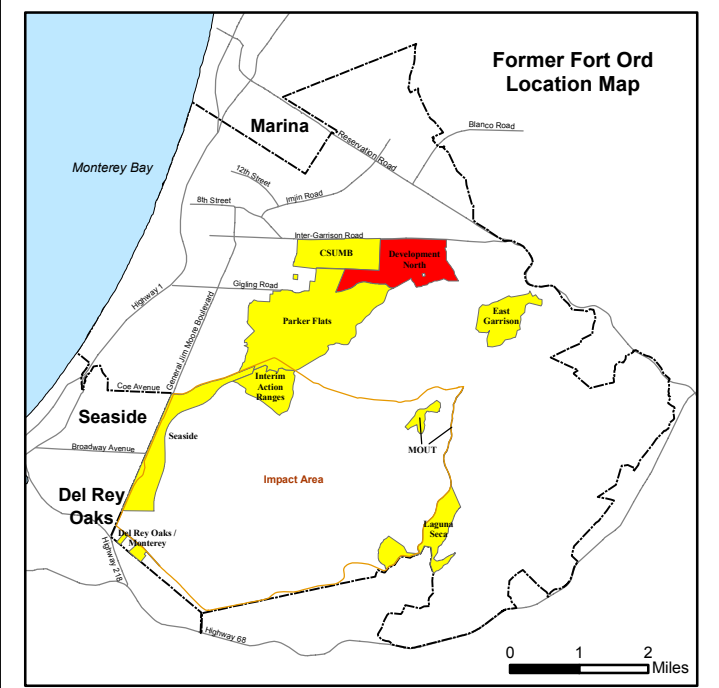


Legend

- Environmental Well
- Abandoned Well
- Water Supply Well
- 540 Topography 5ft
- Munitions Response Area
- Major Road

Soil Type

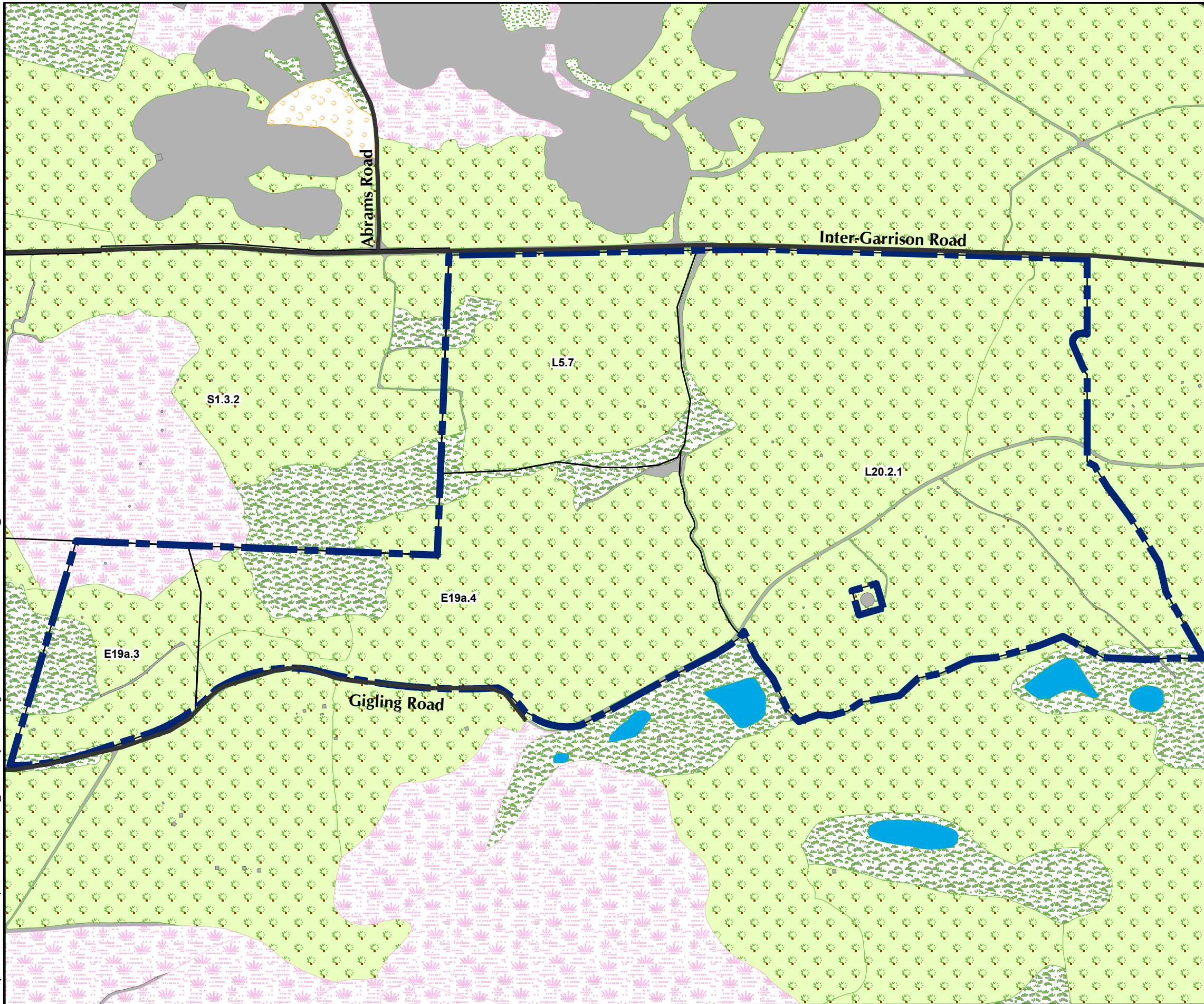
- Arnold-Santa Ynez Complex
- Baywood Sand, 2 to 15 Percent Slopes
- Oceano Loamy Sand, 2 to 15 Percent Slopes
- Antioch Very Fine Sandy Loam, 2 to 9 Percent Slopes



**Development North MRA
Physical Profile
Topography and Soil Type**
FORA ESCA RP
Monterey County, California

Figure 7.2-1

T:\Projects\SEDR\Development North\MXDs\17_2-2 Facility Profile Vegetation Communities.mxd - 10/1/2008 @ 11:58:58 AM



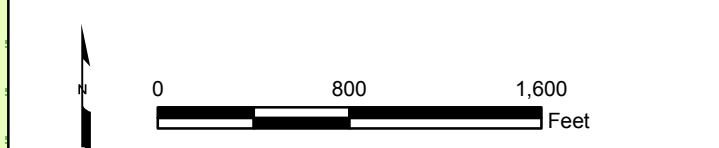
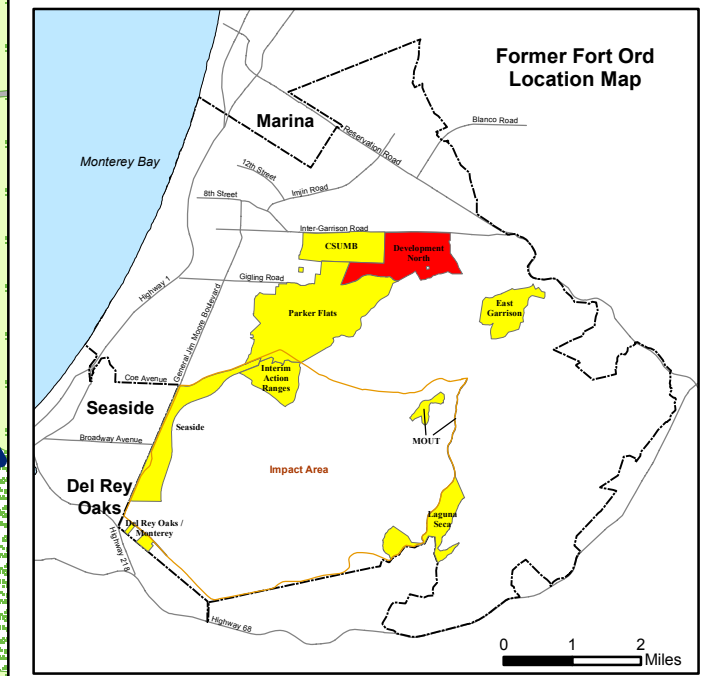
Legend

- Munitions Response Area
- Major Road
- L20.2.1 USACE Parcel

Vegetation Type

- Grassland
- Maritime Chaparral
- Inland Coast Live Oak Woodland
- Coastal Scrub
- Coastal Coast Live Oak Woodland
- Aquatic Feature
- Developed / Disturbed

Source: Flora and Fauna Baseline Study of Fort Ord, California, Jones and Stokes Association Inc., December 1992.



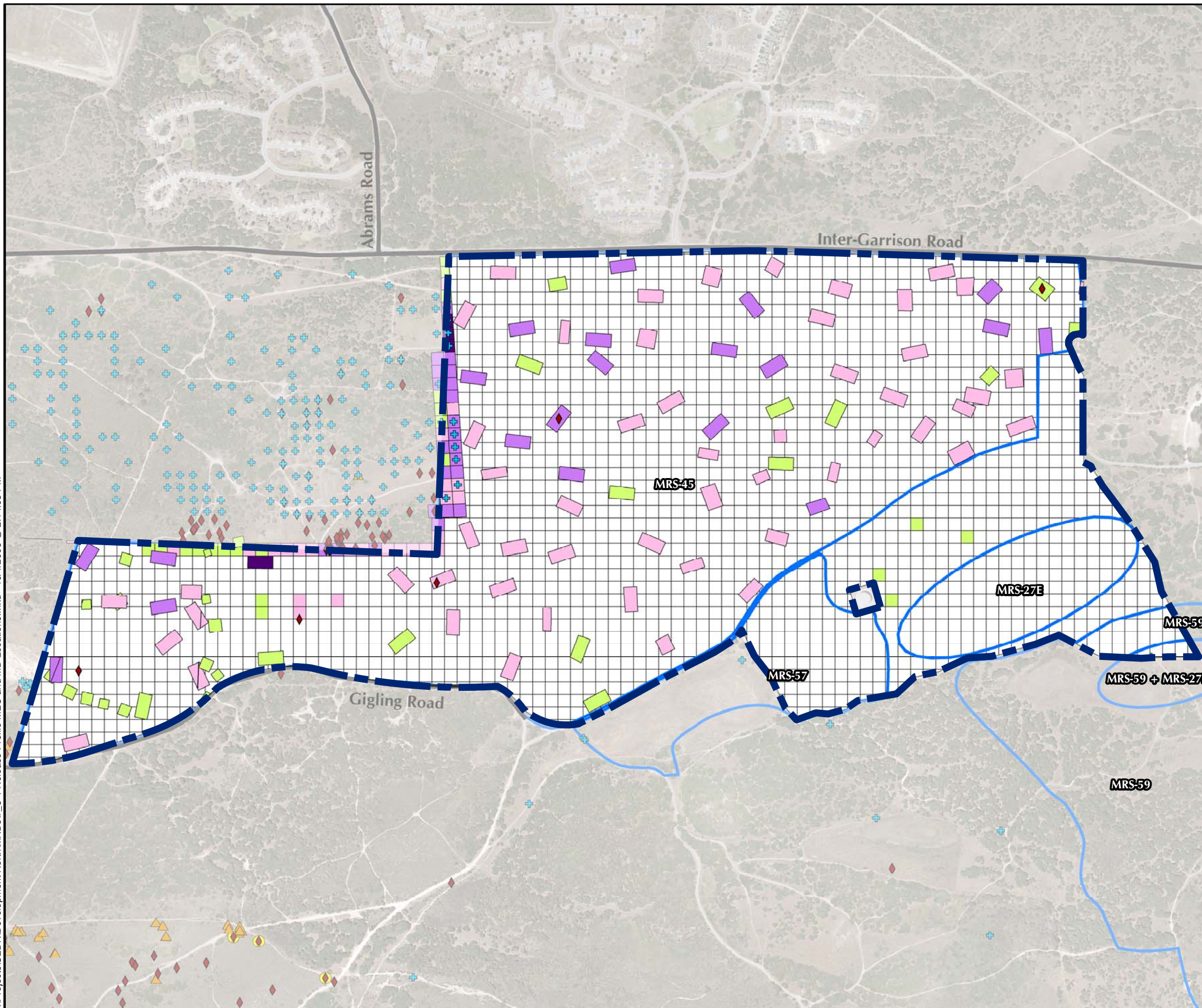
Westcliffe
Engineers, Inc.

**Development North MRA
Physical Profile
Generalized Vegetation Communities**

FORA ESCA RP
Monterey County, California

Figure 7.2-2

T:\Projects\SEDR\Development North\MXD\17_3-1 Release Profile MEC and MD Locations.mxd - 10/1/2008 @ 2:14:05 PM



Legend

- Munitions Response Area
- Munitions Response Site
- Major Road

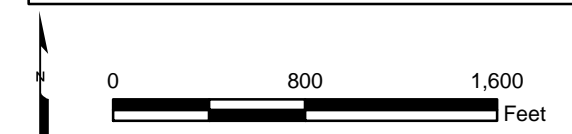
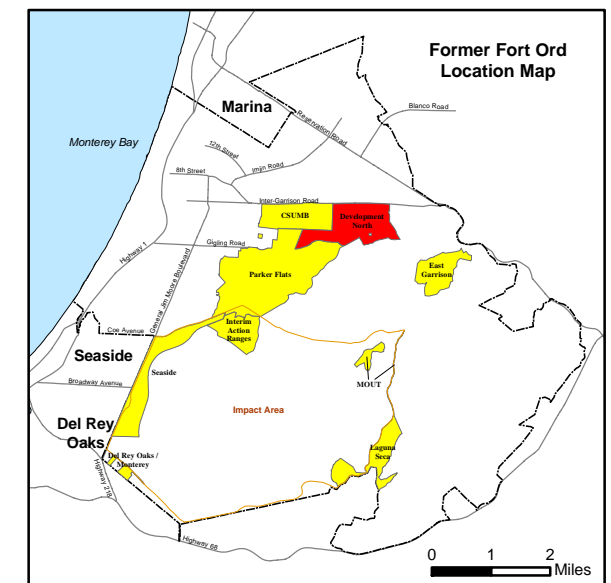
MEC Type

- Unexploded Ordnance (UXO)
- Discarded Military Munition (DMM)
- Insufficient Data (ISD)
- Burial Pit Containing MEC

Munitions Debris (MD) by Weight (total pounds per grid)

- No Data
- 0
- < 10
- 10 to 100
- > 100

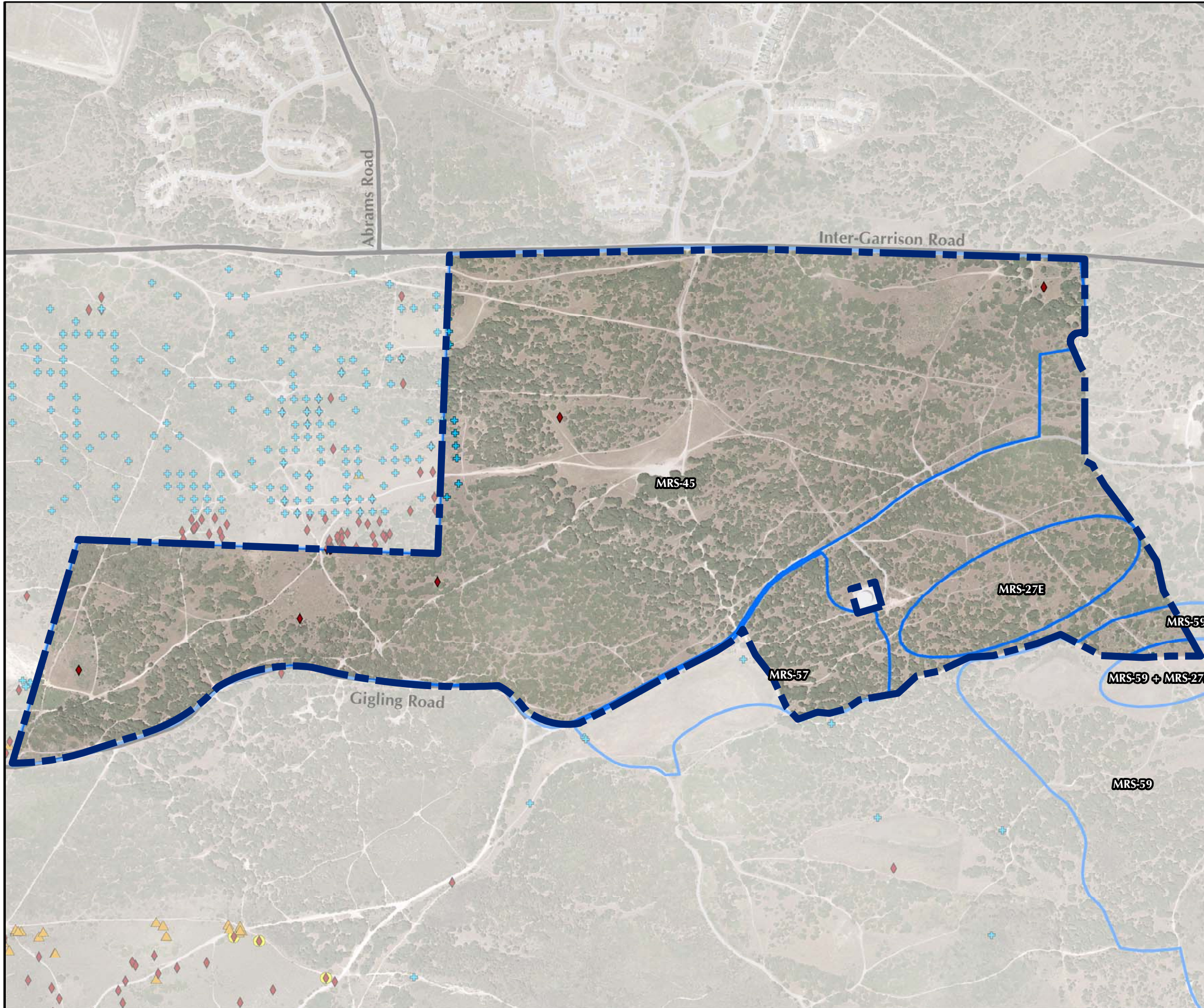
Note: Munitions Debris (MD) includes scrap related to small arms ammunition.



**Development North MRA
Release Profile
MEC and MD Locations
FORA ESCA RP
Monterey County, California**

Figure 7.3-1

T:\Projects\SEDR\Development\NorthMXDs\7_3-2 Release Profile MEC Locations.mxd - 10/1/2008 @ 11:59:04 AM



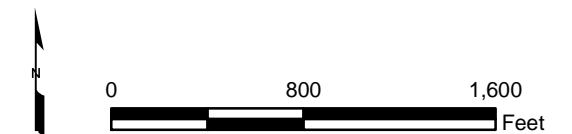
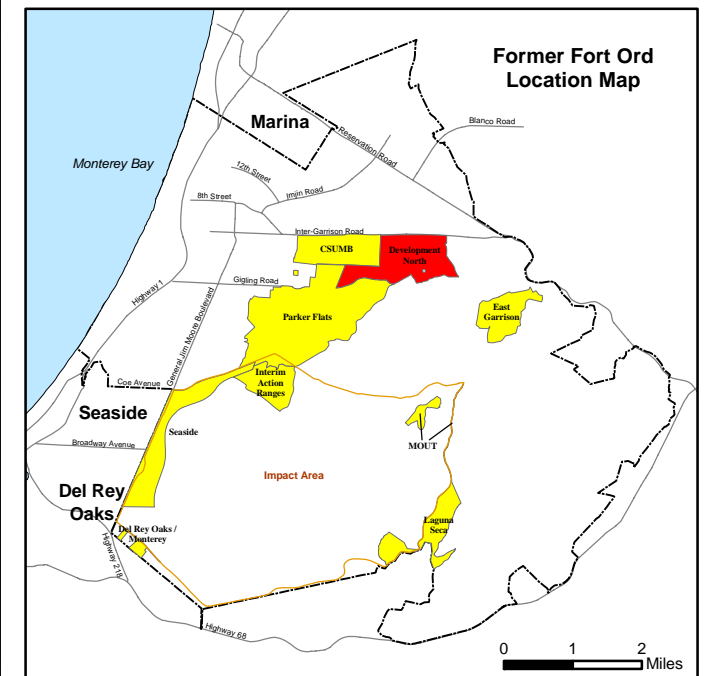
Legend

- ▬▬▬ Munitions Response Area
- ▬ Munitions Response Site
- MRS-45**
- ▬ Major Road

MEC Type

- ◆ Unexploded Ordnance (UXO)
- ▲ Discarded Military Munition (DMM)
- + Insufficient Data (ISD)
- Burial Pit Containing MEC

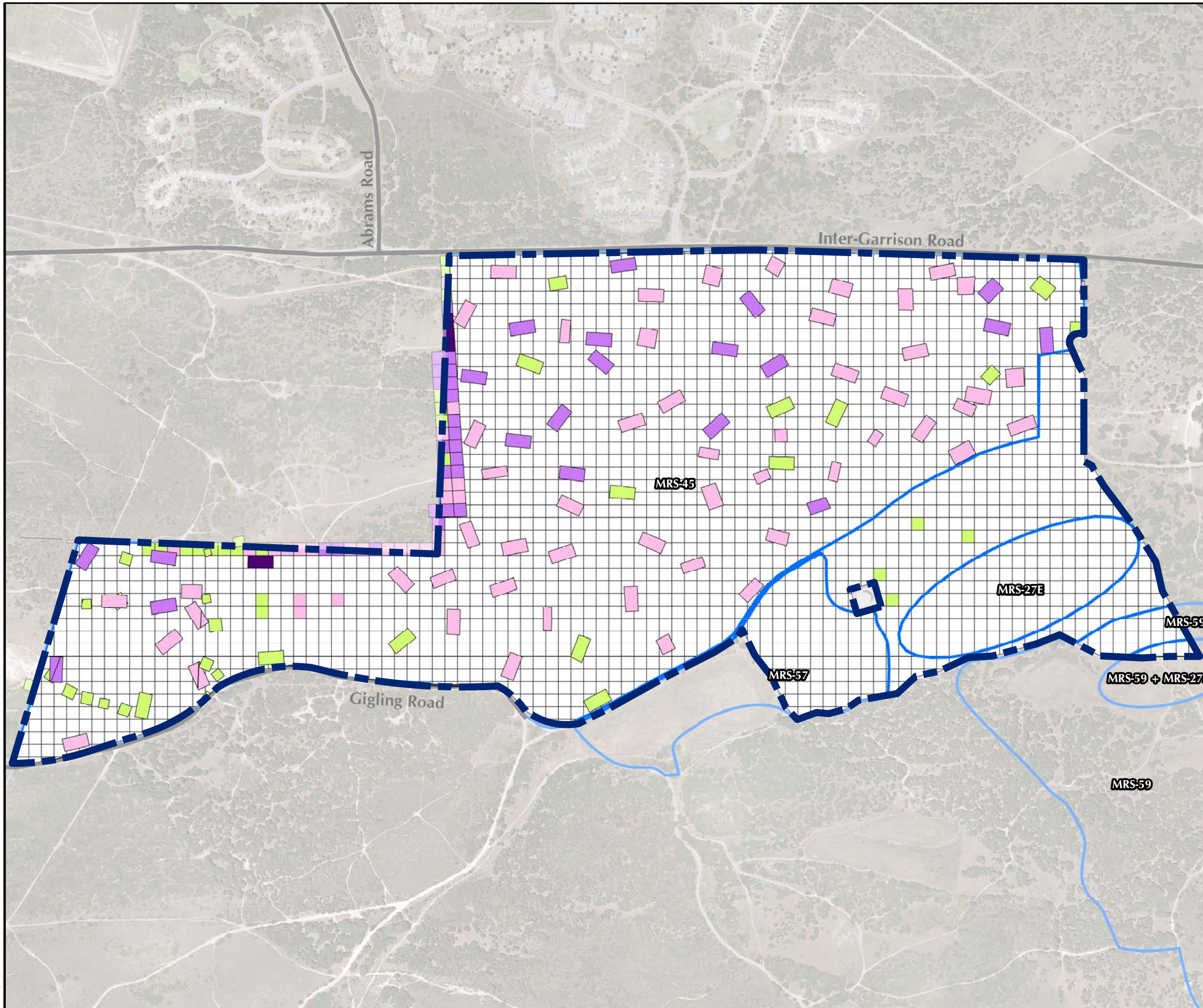
Note: MEC locations may include more than one item.



Development North MRA
Release Profile
MEC Locations
 FORA ESCA RP
 Monterey County, California

Figure 7.3-2

T:\Projects\SEDR\Development North\MXDs\17_3-3 Release Profile MD Locations.mxd - 10/1/2008 @ 2:14:05 PM



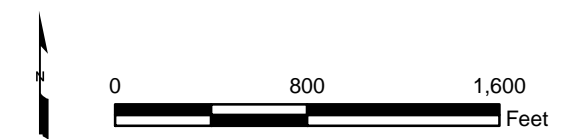
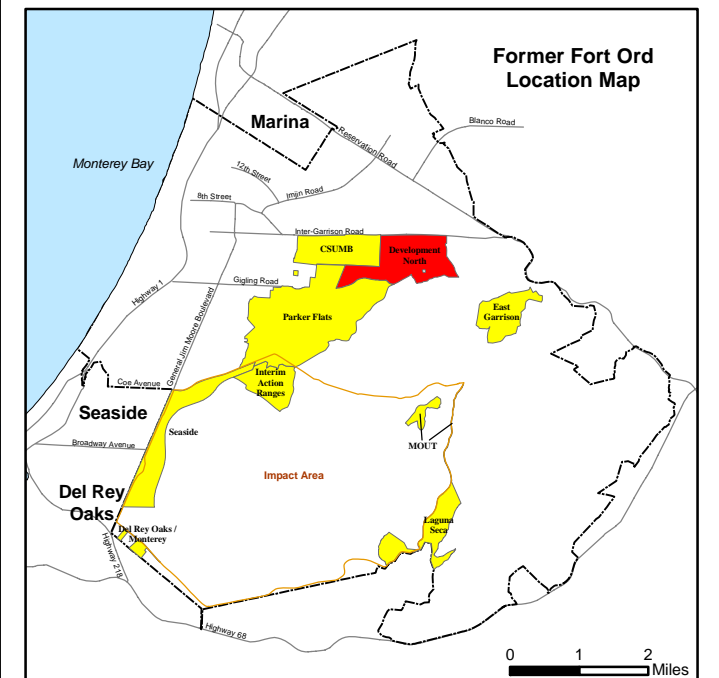
Legend

- Munitions Response Area
- Munitions Response Site
- Major Road

Munitions Debris (MD) by Weight (total pounds per grid)

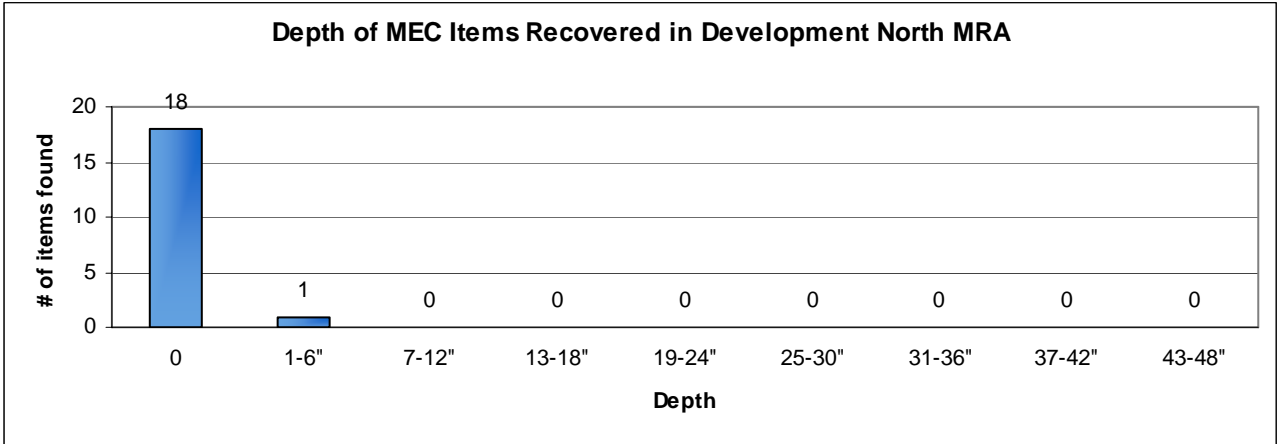
- No Data
- 0
- < 10
- 10 to 100
- > 100

Note: Munitions Debris (MD) includes scrap related to small arms ammunition.



Development North MRA
 Release Profile
 MD Locations
 FORA ESCA RP
 Monterey County, California

Figure 7.3-3

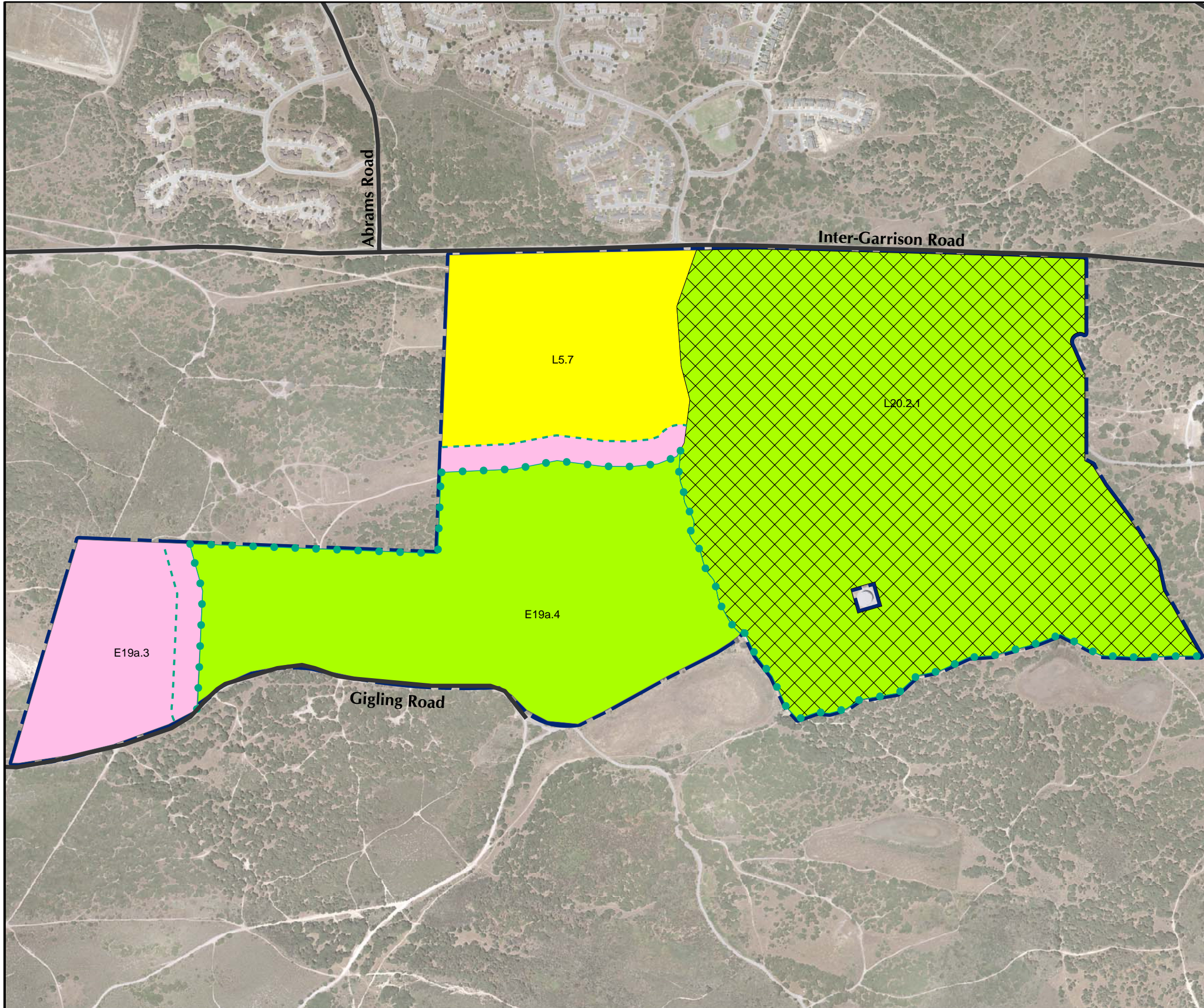


**Development North MRA
Distribution of MEC
Recovered by Depth Interval**



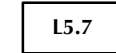






FORA ESCA RP
Monterey County, California

Figure 7.3-4







T:\Projects\SEDRI\Development North\MXDs\7_4-1 Land Use Profile Reuse Plan.mxd - 10/1/2008 @ 11:59:04 AM

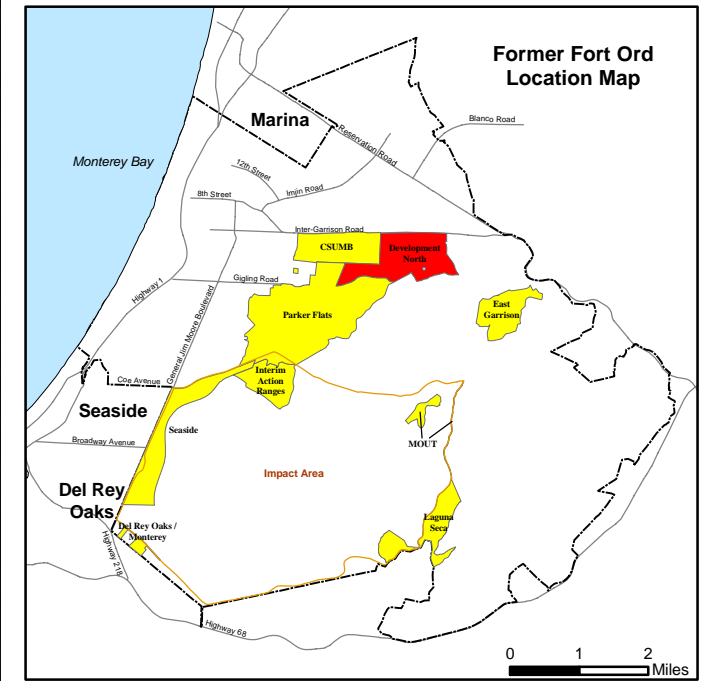


Legend

-  Munitions Response Area
-  Major Road
-  USACE Parcel
-  Residential (Proposed School Site)
-  Non-Residential
-  Habitat Reserve
-  Habitat Corridor
-  Borderland Interface
-  200-Footer Buffer from Borderland Interface

Future Land Use

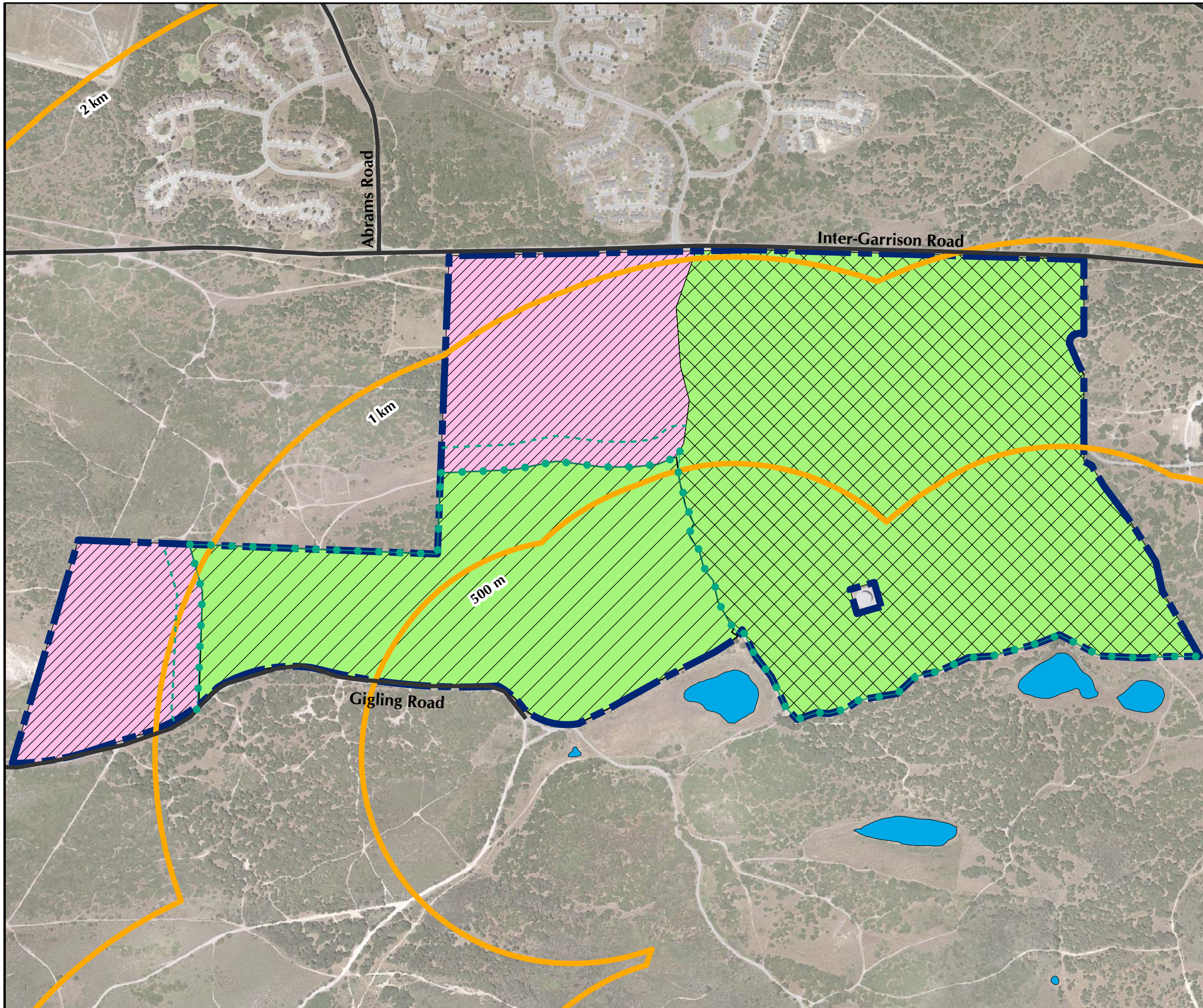
-  Residential (Proposed School Site)
-  Non-Residential
-  Habitat Reserve
-  Habitat Corridor
-  Borderland Interface
-  200-Footer Buffer from Borderland Interface









**Development North MRA
Land Use Profile
Reuse Plan**
FORA ESCA RP
Monterey County, California

Figure 7.4-1






T:\Projects\SEDR\Development\North\MXDs\7_5-1 Ecological Profile Habitat Type.mxd - 10/1/2008 @ 11:59:04 AM

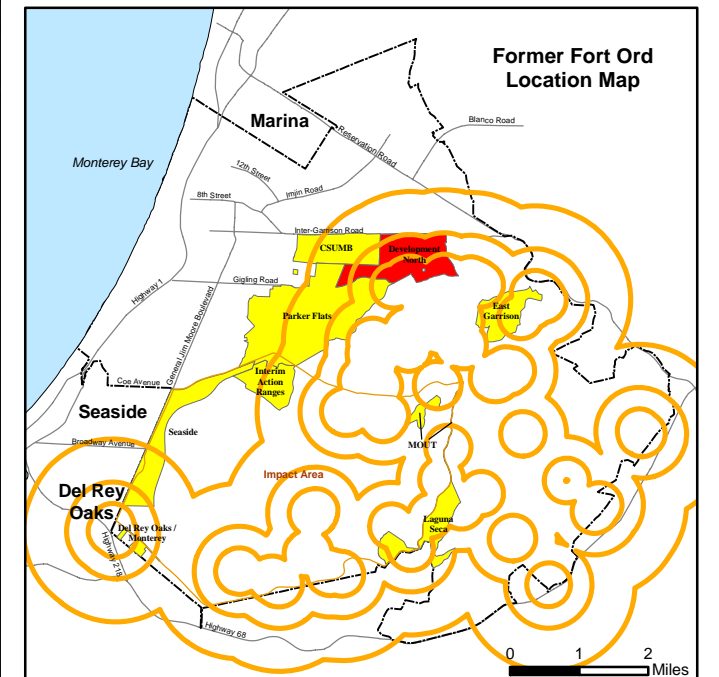




Legend

-  Munitions Response Area
-  California Tiger Salamander Buffer
-  Major Road
-  Borderland Interface
-  200-Foot Buffer from Borderland Interface
-  Aquatic Features

Habitat Management Plan Category

-  Development (includes future Residential and Non-Residential areas)
-  Development with Reserve or Restrictions
-  Habitat Corridor
-  Habitat Corridor with Development
-  Habitat Reserve



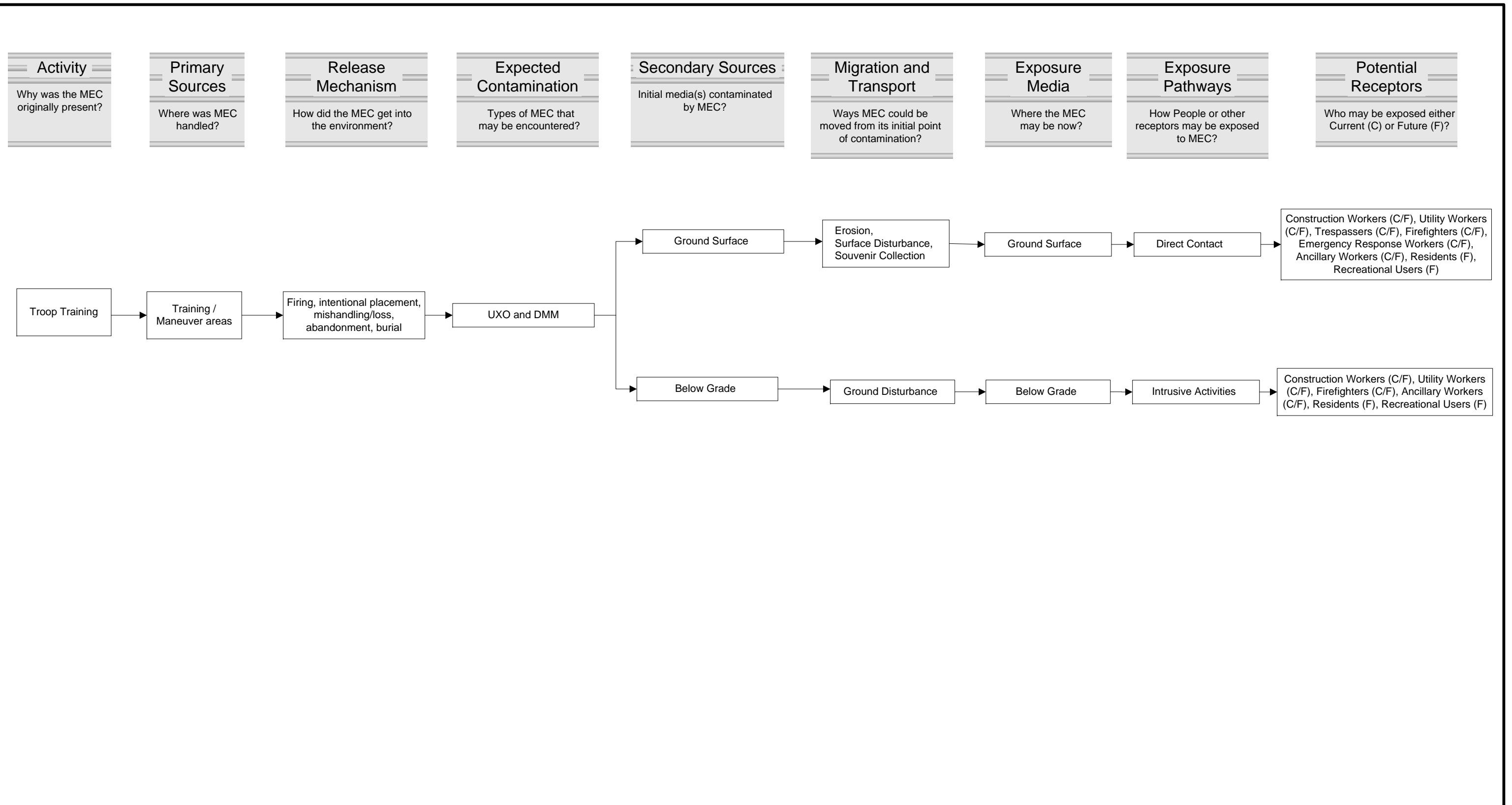





**Westcliffe
Engineers, Inc.**

**Development North MRA
Ecological Profile
Habitat Type**

FORA ESCA RP
Monterey County, California

Figure 7.5-1



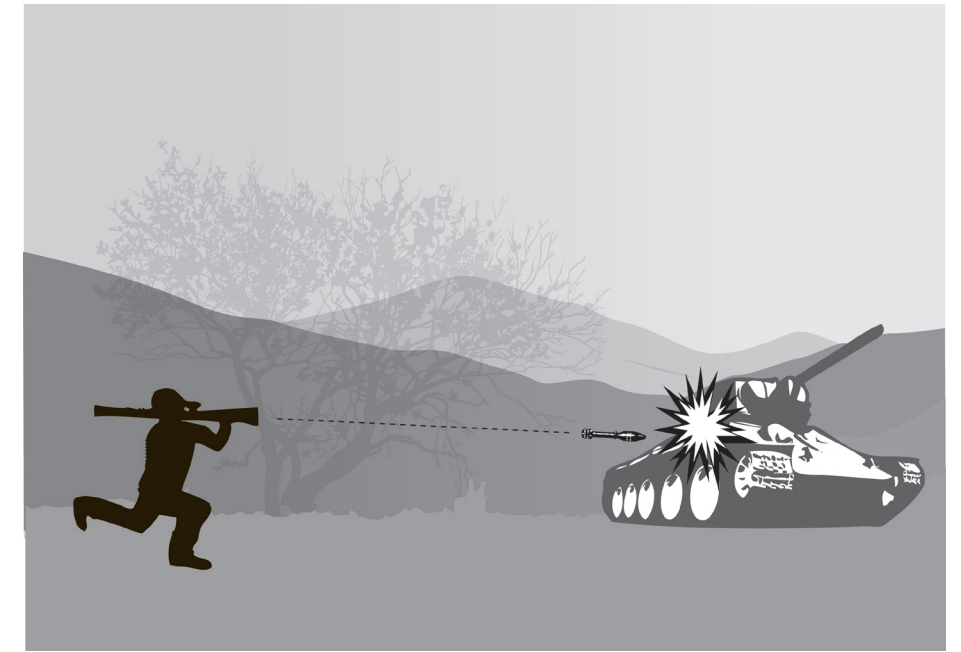
  Westcliffe Engineers, Inc.	Development North MRA Pathway Analysis Flowchart <small>FORA ESCA RP Monterey County, California</small>
Figure 7.6-1	



Burial / Mishandling / Loss



Troop Training



Direct Fire