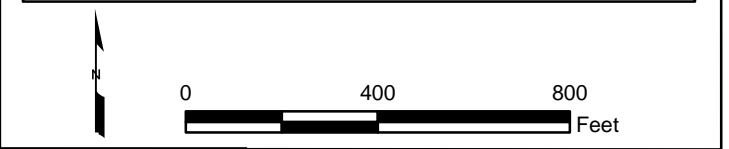
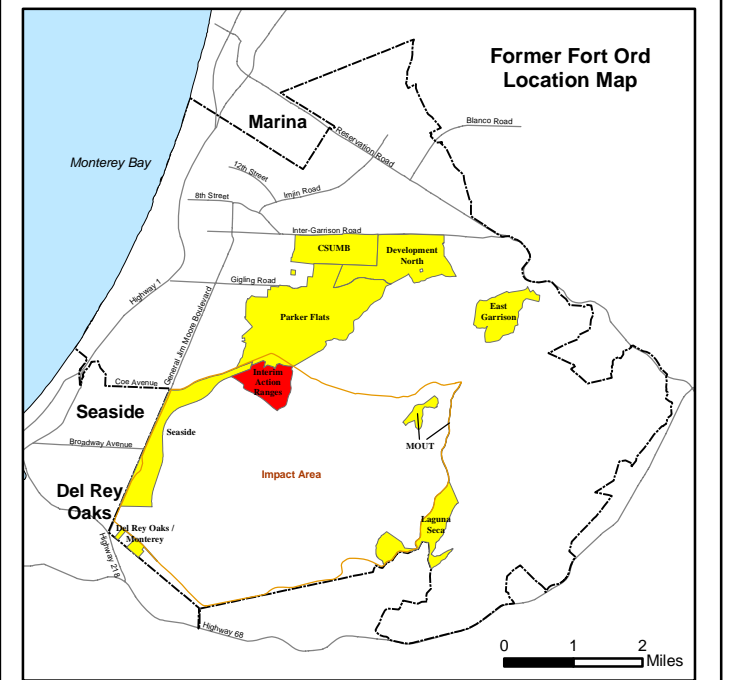
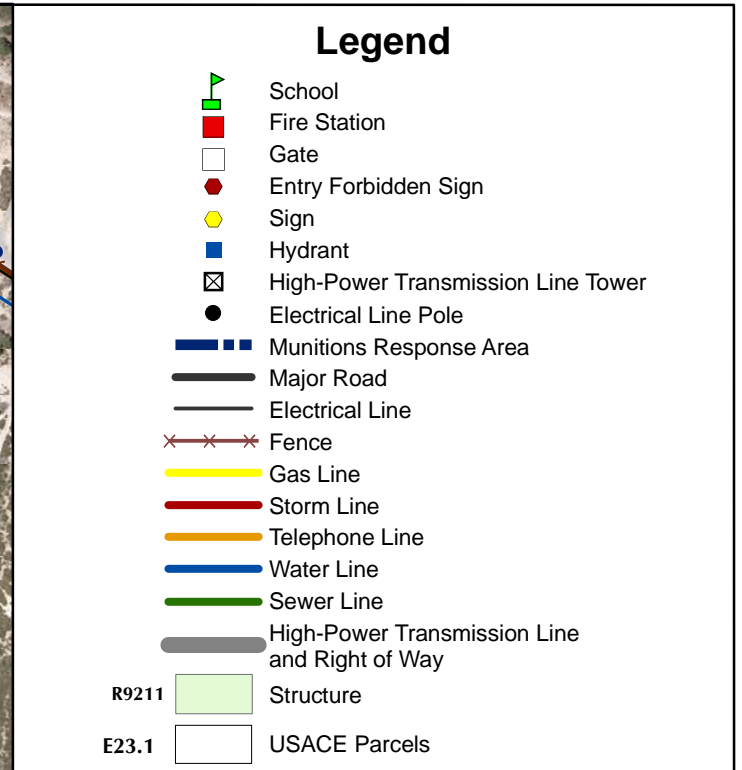




T:\Projects\SEDR\Interim Action Ranges\MXD8_1-1 Facility Profile Physical Features.mxd - 6/4/2008 @ 5:12:41 PM



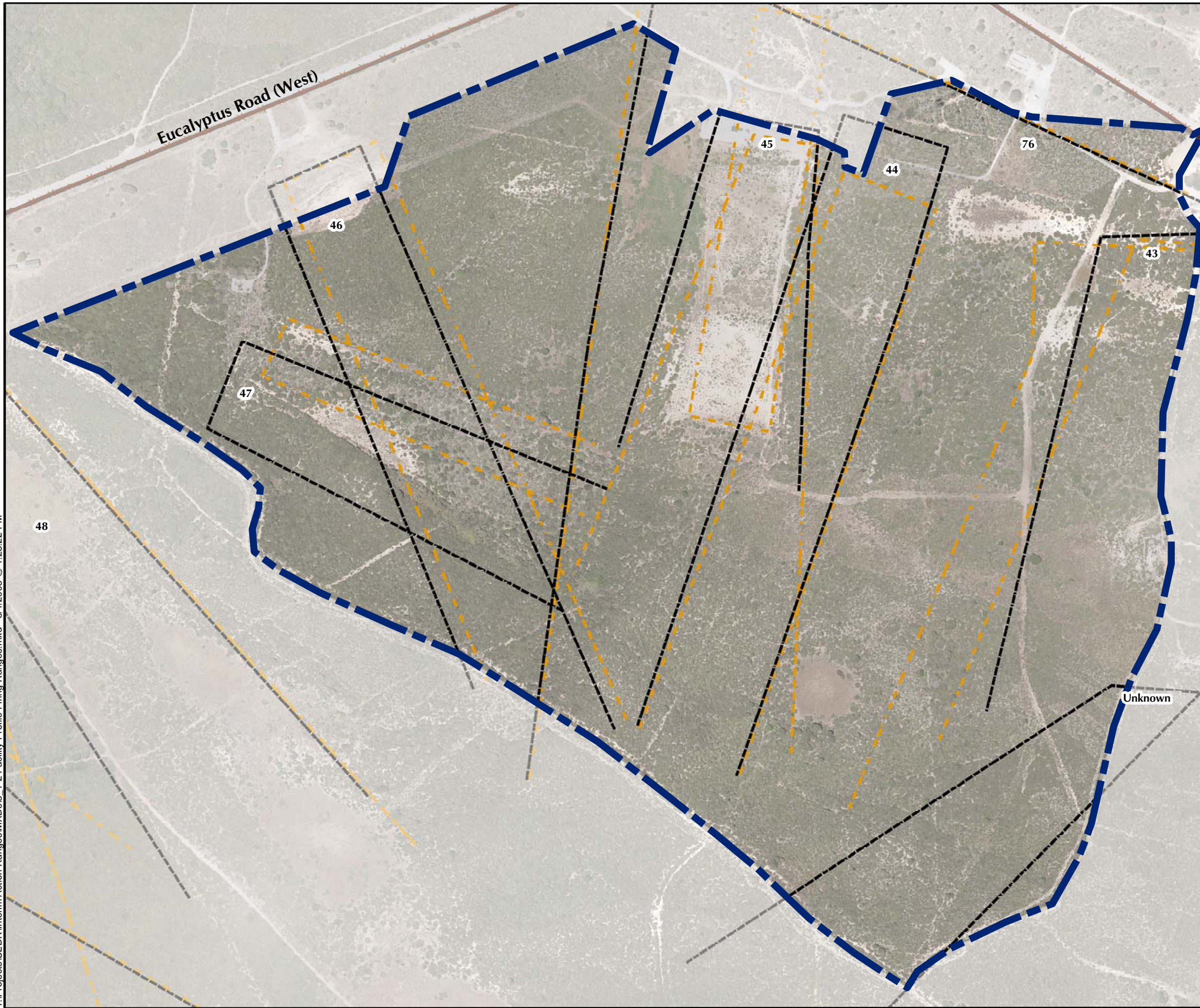
Westcliffe Engineers, Inc.

**Interim Action Ranges MRA
Facility Profile
Physical Features**

FORA ESCA RP
Monterey County, California

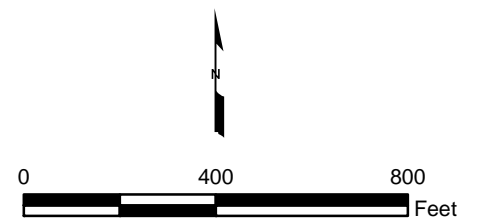
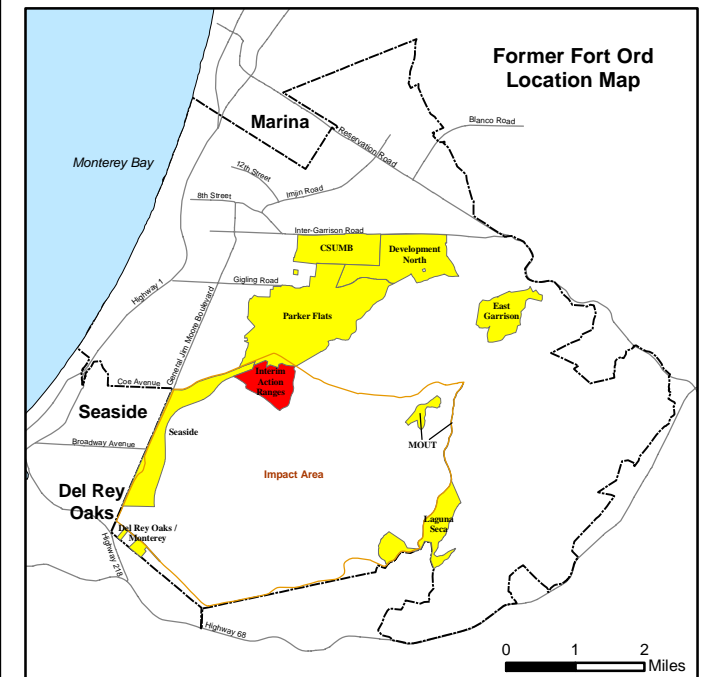
Figure 8.1-1

T:\Projects\SEDR\Interim Action Ranges\MXDsb_1-2 Facility Profile Firing Ranges.mxd - 6/4/2008 @ 1:23:22 PM



Legend

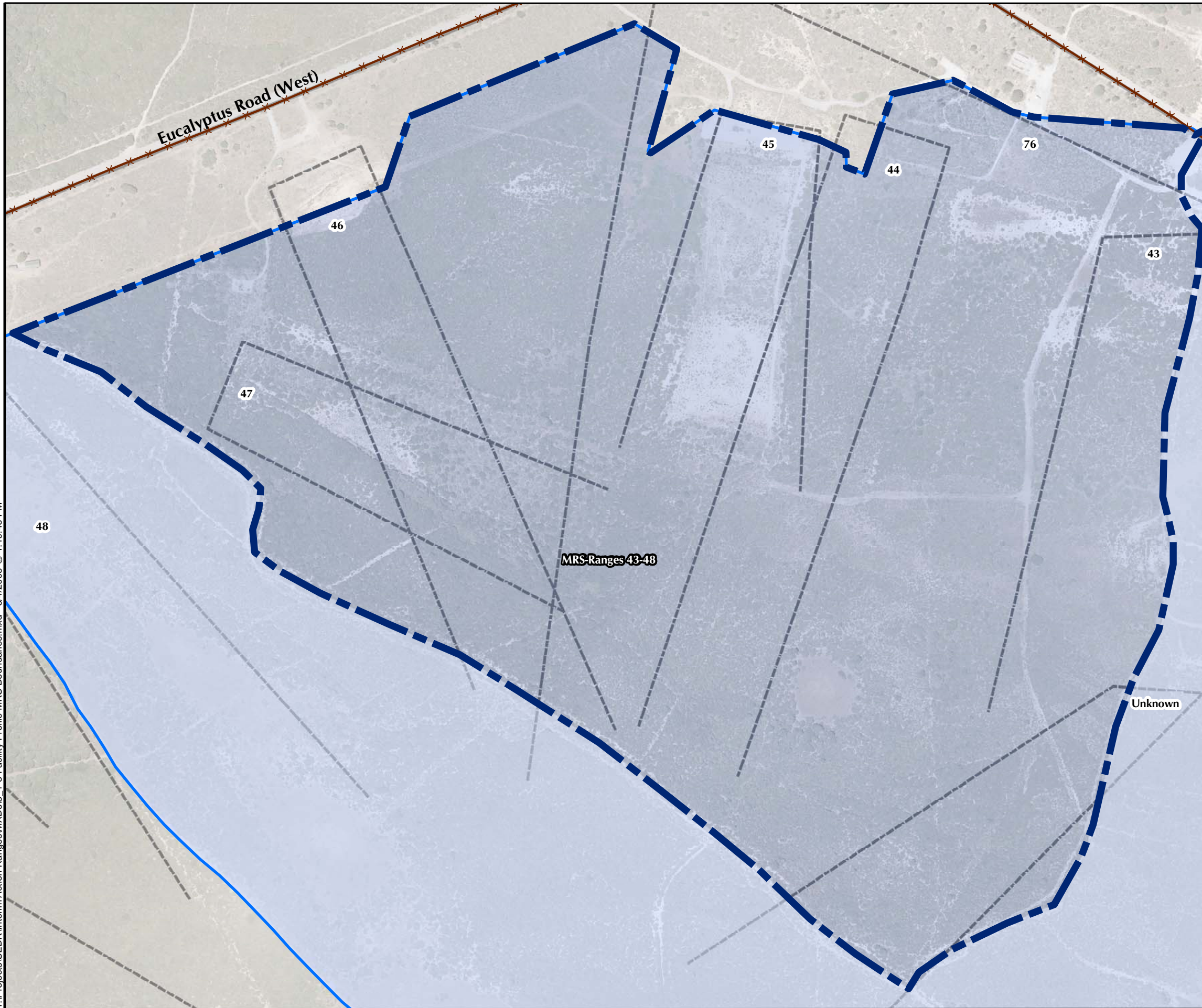
-  Munitions Response Area
- 42  Firing Range
-  Historical Range
-  Major Road
-  Fence



**Interim Action Ranges MRA
Facility Profile
Ranges and Training Sites**
FORA ESCA RP
Monterey County, California

Figure 8.1-2

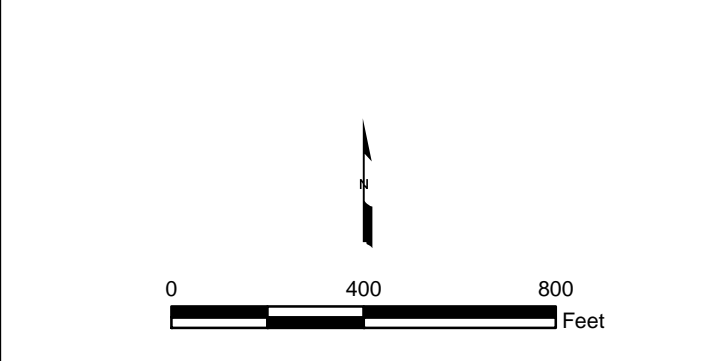
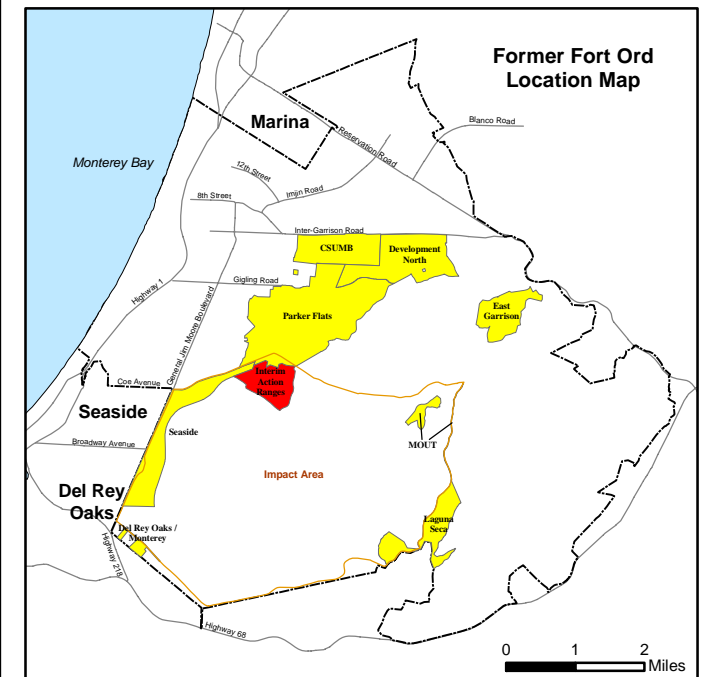
T:\Projects\SEDR\Interim Action Ranges\MXD\8_1-3 Facility Profile MRS Boundaries.mxd - 6/4/2008 @ 1:19:46 PM



Legend

- Munitions Response Area
- Major Road
- Fence
- Firing Range
- Munitions Response Site

MRS-Ranges 43-48



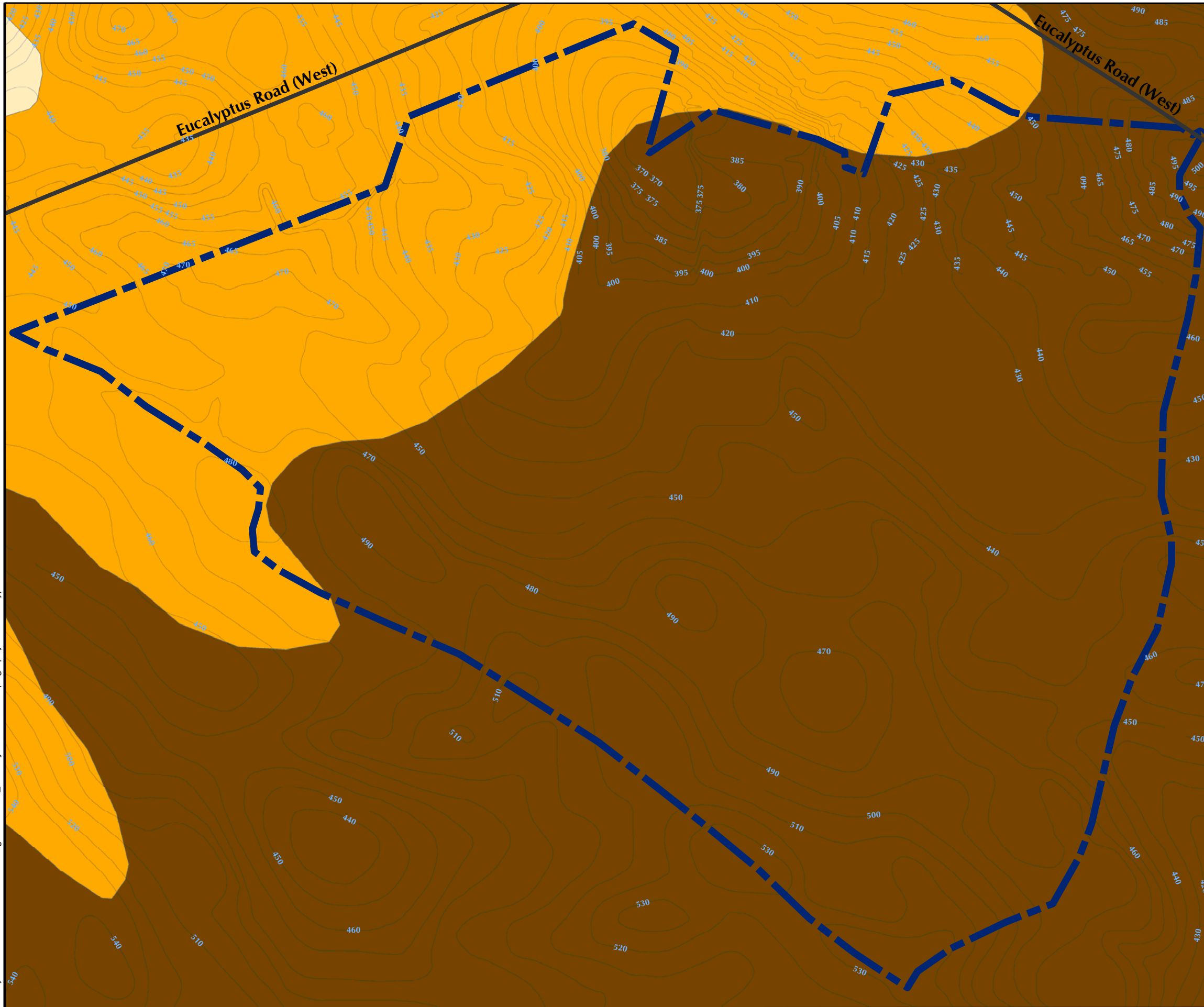
Westcliffe
Engineers, Inc.

**Interim Action Ranges MRA
Facility Profile
Munitions Response Site Boundaries**

FORA ESCA RP
Monterey County, California

Figure 8.1-3

T:\Projects\SEDR\Interim Action Ranges\MXD\8_2-1 Physical Profile Topography and Soil Type.mxd - 6/4/2008 @ 1:39:47 PM

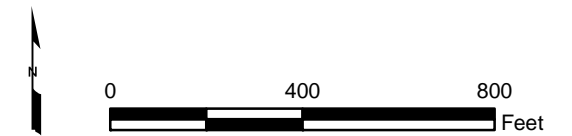
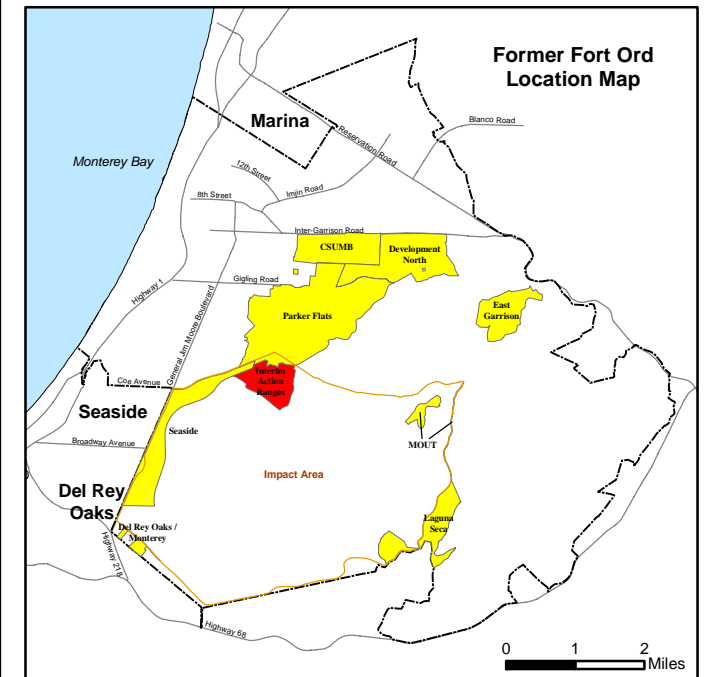


Legend

- 540 Topography 5 ft and 10 ft
- Munitions Response Area
- Major Road

Soil Type

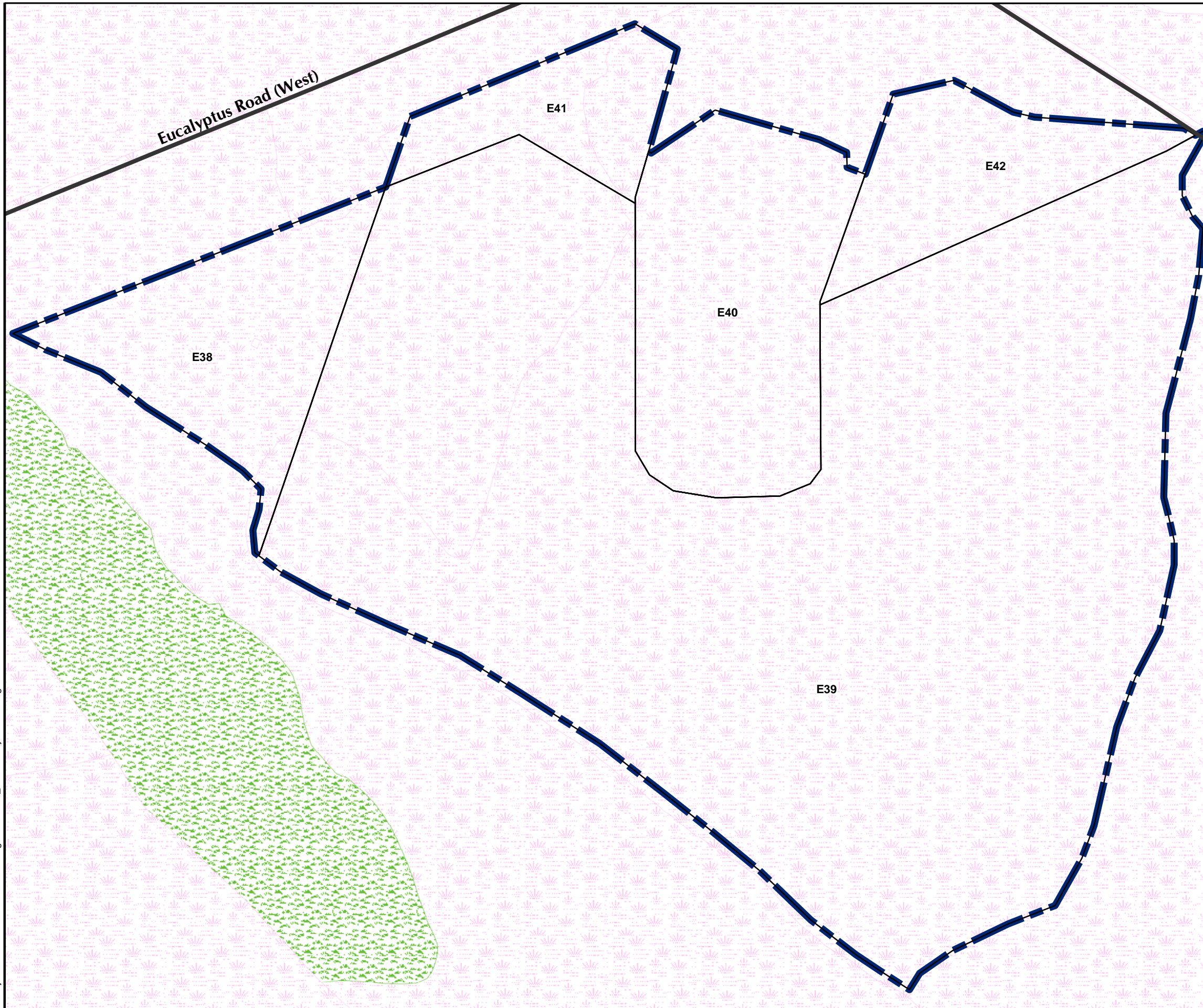
- Arnold-Santa Ynez Complex
- Baywood Sand, 2 to 15 Percent Slopes
- Oceano Loamy Sand, 2 to 15 Percent Slopes





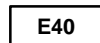



**Interim Action Ranges MRA
Physical Profile
Topography and Soil Type**
FORA ESCA RP
Monterey County, California

Figure 8.2-1

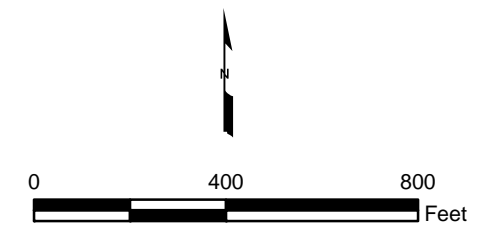
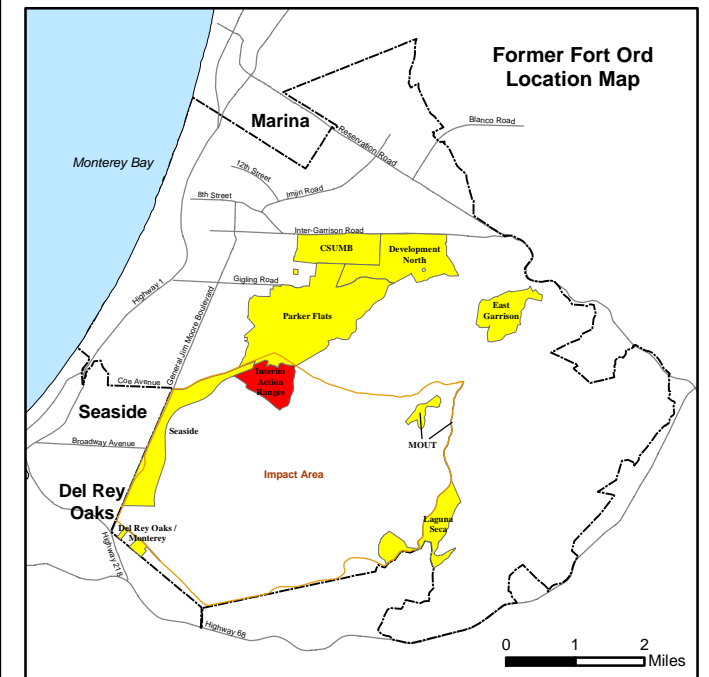
T:\Projects\SED\Interim Action Ranges\MXD\8_2-2 Facility Profile Vegetation Communities.mxd - 6/4/2008 @ 1:42:16 PM



Legend

-  Munitions Response Area
 -  Major Road
 -  USACE Parcel
- ### Vegetation Type
-  Grassland
 -  Maritime Chaparral
 -  Inland Coast Live Oak Woodland

Source: Flora and Fauna Baseline Study of Fort Ord, California, Jones and Stokes Association Inc., December 1992.

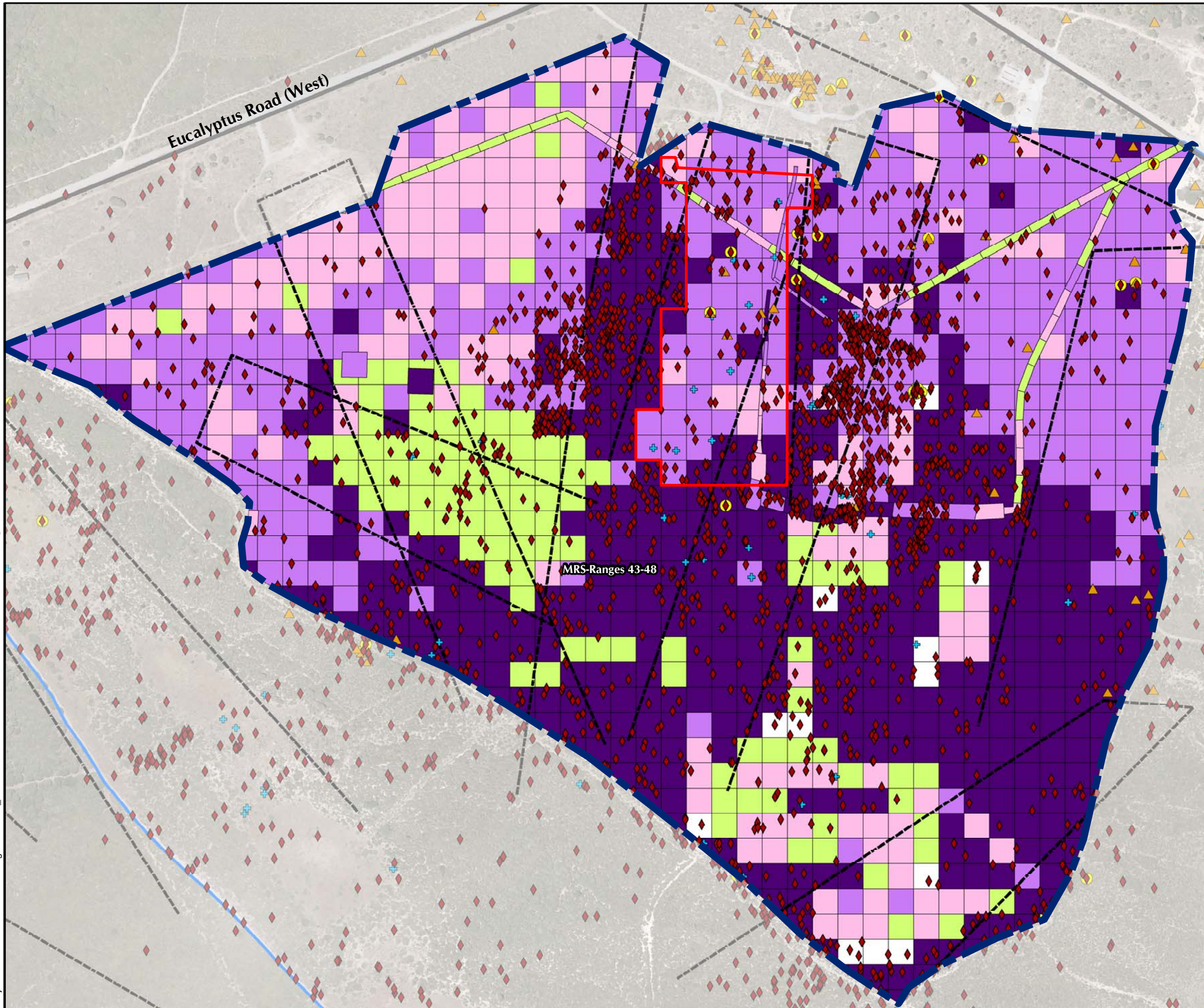


**Interim Action Ranges MRA
Physical Profile
Generalized Vegetation Communities**

FORA ESCA RP
Monterey County, California

Figure 8.2-2

T:\Projects\SEDR\Interim Action Ranges\MXDs\8_3-1 Release Profile MEC and MD Locations.mxd - 6/4/2008 @ 2:00:54 PM



Legend

- ▬▬▬ Munitions Response Area
- - - Firing Range
- ▬ Munitions Response Site
- ▬ Major Road
- ▬ Range 45 Sift Area

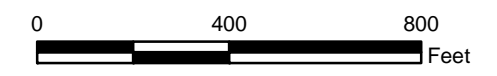
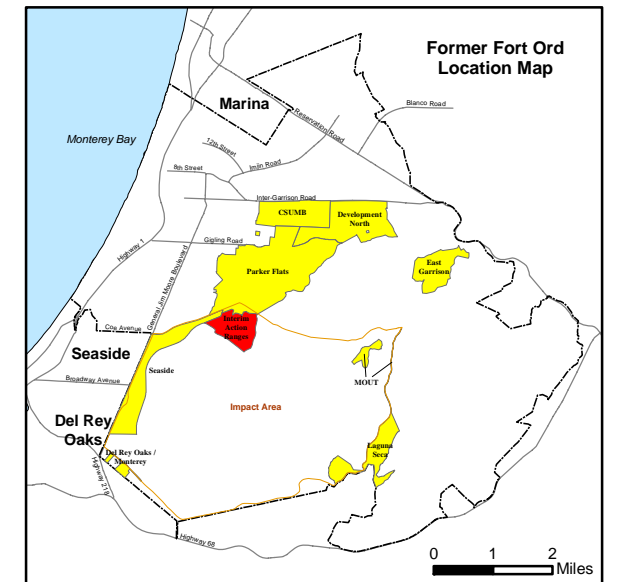
MEC Type

- ◆ Unexploded Ordnance (UXO)
- ▲ Discarded Military Munition (DMM)
- + Insufficient Data (ISD)
- Burial Pit Containing MEC

Munitions Debris (MD) by Weight (total pounds per grid)

- No Data
- 0
- < 10
- 10 to 100
- > 100

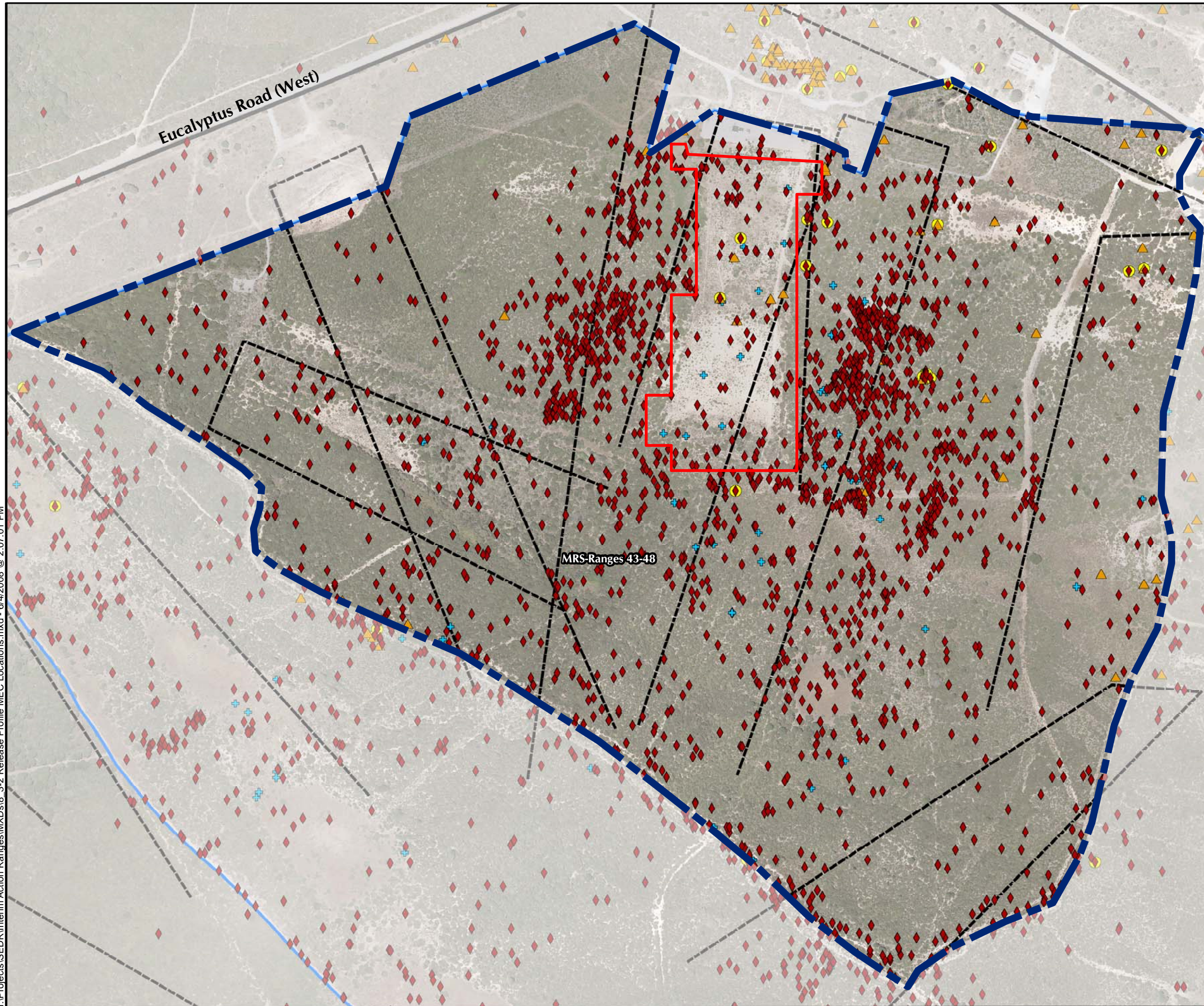
Note: Munitions Debris (MD) includes scrap related to small arms ammunition.



**Interim Action Ranges MRA
Release Profile
MEC and MD Locations
FORA ESCA RP
Monterey County, California**

Figure 8.3-1

T:\Projects\SED\Interim Action Ranges\MXD\8.3-2 Release Profile MEC Locations.mxd - 6/4/2008 @ 2:07:01 PM



Legend

- - - Munitions Response Area
- Munitions Response Site

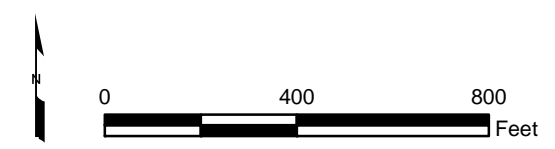
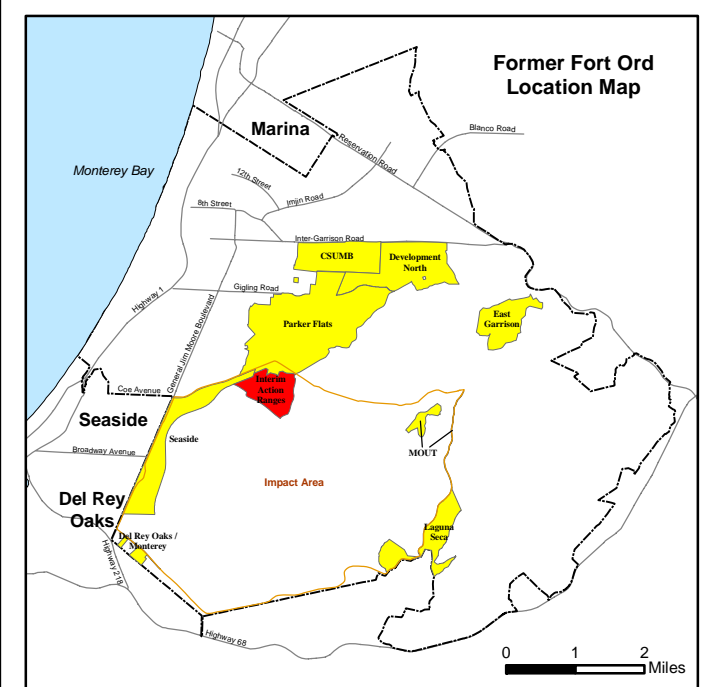
MRS-Ranges 43-48

- - - Firing Range
- Major Road
- Range 45 Sift Area

MEC Type

- ◆ Unexploded Ordnance (UXO)
- ▲ Discarded Military Munition (DMM)
- + Insufficient Data (ISD)
- Burial Pit Containing MEC

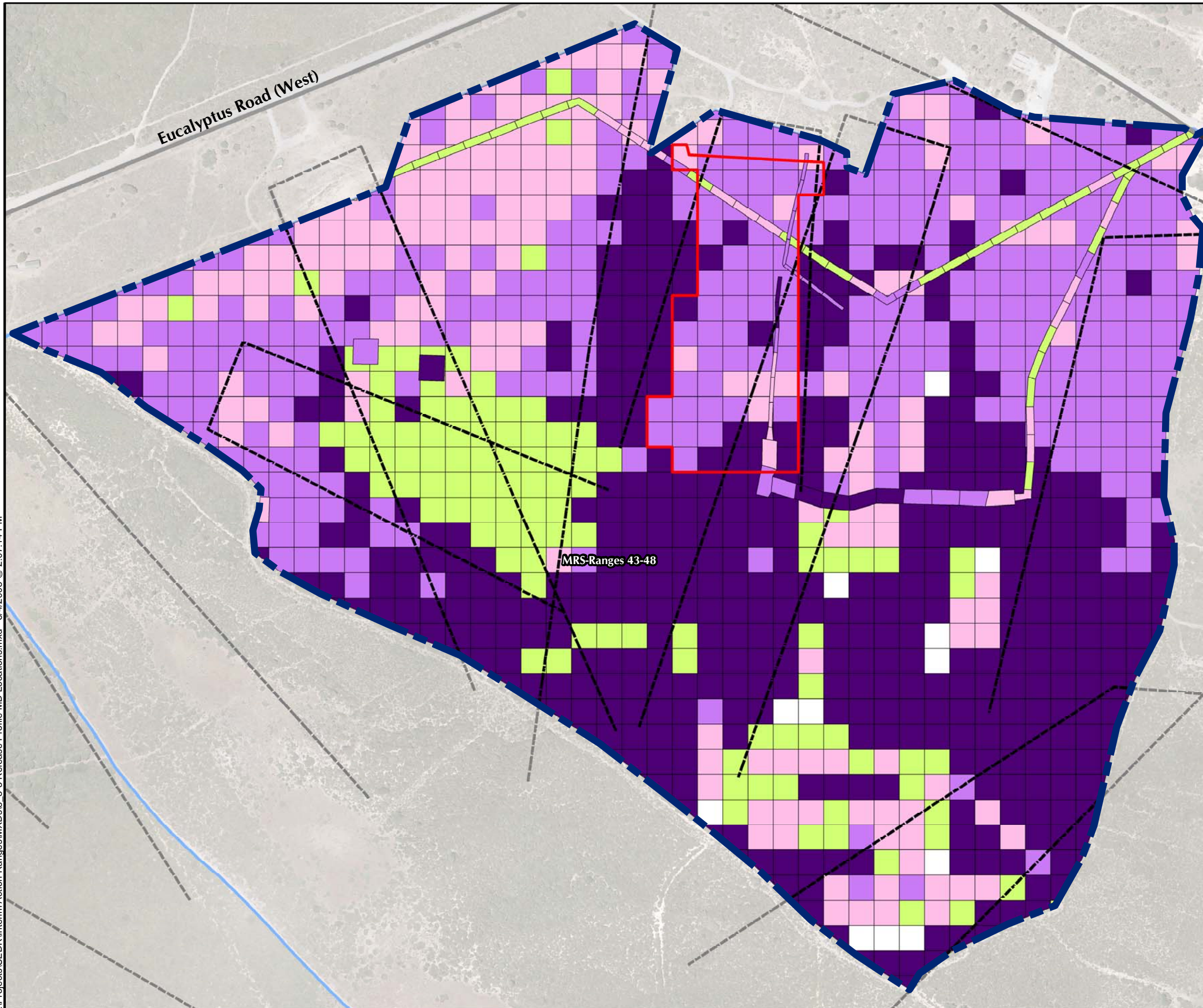
Note: MEC locations may include more than one item.



**Interim Action Ranges MRA
Release Profile
MEC Locations**
FORA ESCA RP
Monterey County, California

Figure 8.3-2

T:\Projects\SEDR\Interim Action Ranges\MXD\8 3-3 Release Profile MD Locations.mxd - 6/4/2008 @ 2:07:14 PM



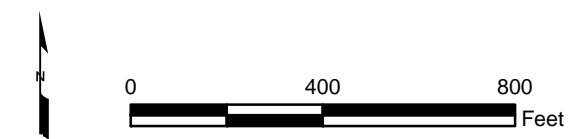
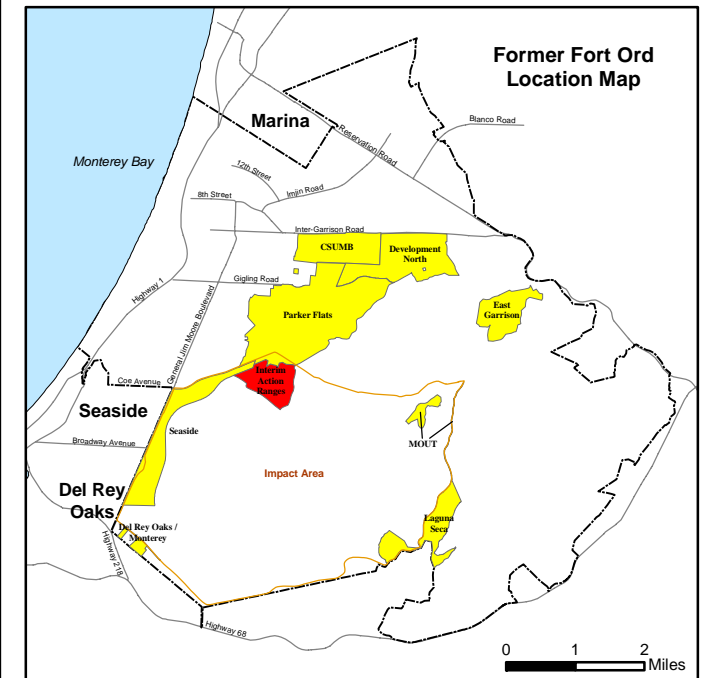
Legend

- Munitions Response Area
- Munitions Response Site
- Firing Range
- Major Road
- Range 45 Sift Area

Munitions Debris (MD) by Weight (total pounds per grid)

- No Data
- 0
- < 10
- 10 to 100
- > 100

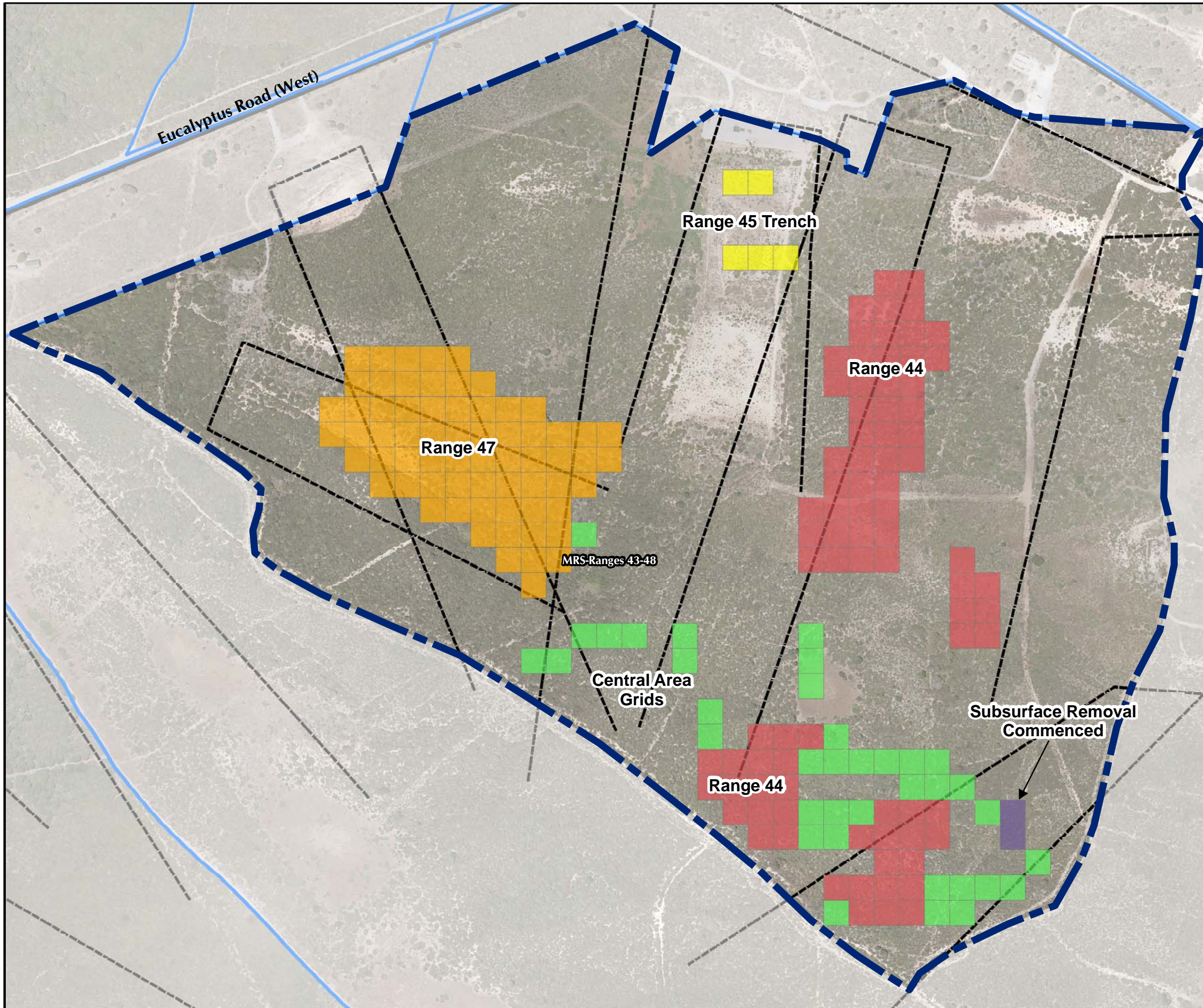
Note: Munitions Debris (MD) includes scrap related to small arms ammunition.



**Interim Action Ranges MRA
Release Profile
MD Locations
FORA ESCA RP
Monterey County, California**

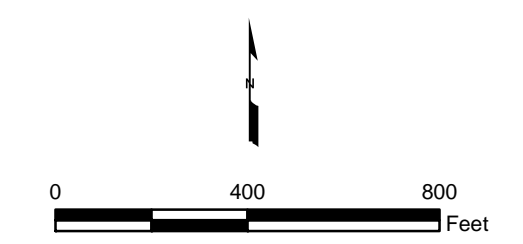
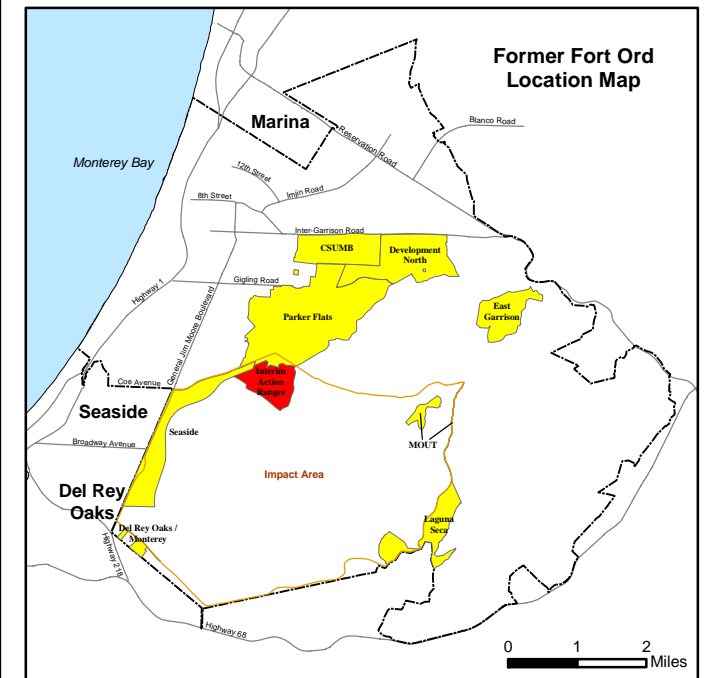
Figure 8.3-3

T:\Projects\SEDR\Interim Action Ranges\MXD8_3-4 Release Profile Special Case Areas.mxd - 6/4/2008 @ 2:07:23 PM



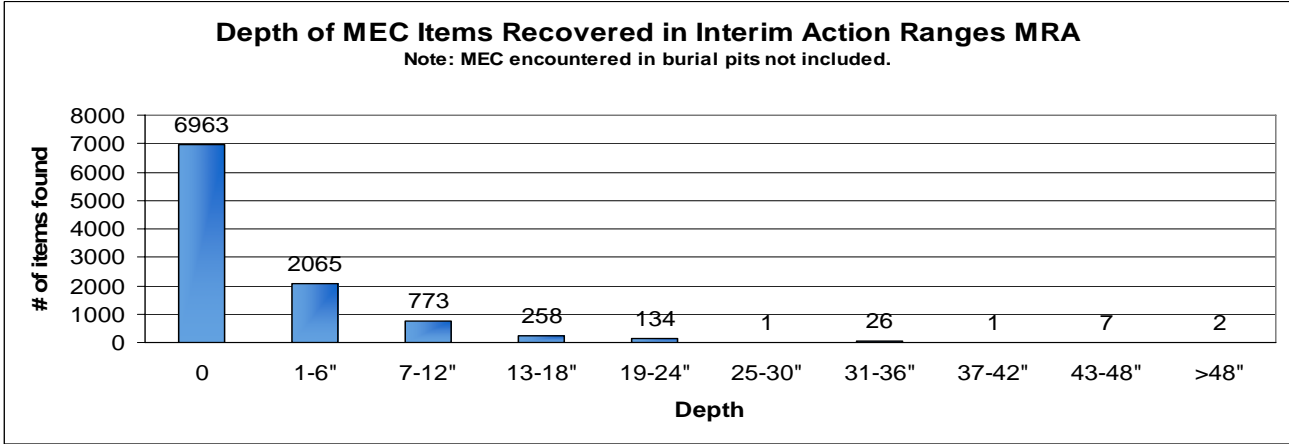
Legend

- Munitions Response Area
- Munitions Response Site
- Firing Range
- Major Road
- Special Case Areas**
- Range 44
- Range 45 Trench
- Range 47
- Non-Completed Areas**
- No Subsurface Investigation
- Subsurface Removal Commenced



**Interim Action Ranges MRA
Release Profile
Special Case Areas**
FORA ESCA RP
Monterey County, California

Figure 8.3-4



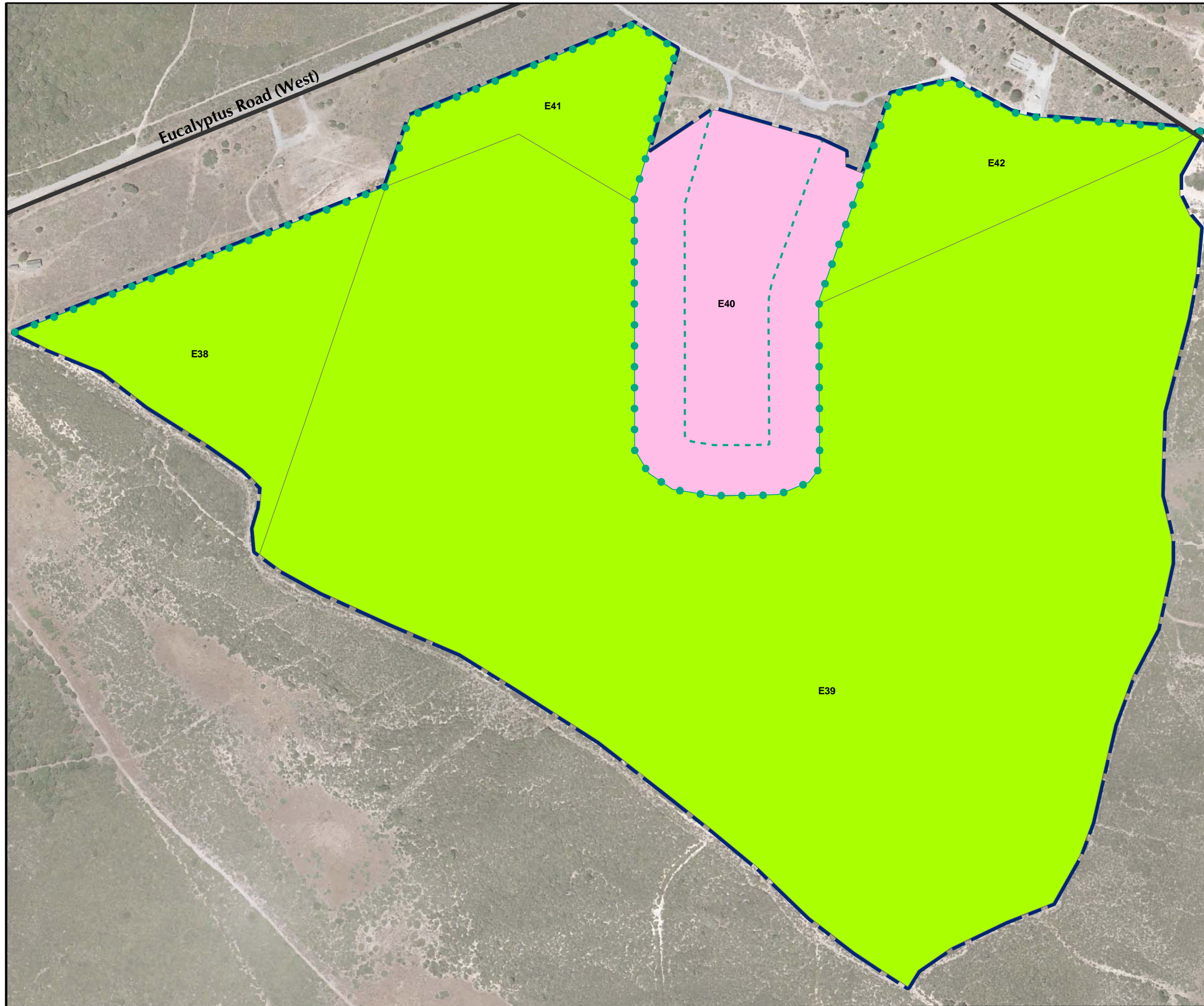
**Westcliffe
Engineers, Inc.**

**Interim Action Ranges MRA
Distribution of MEC
Recovered by Depth Interval**

FORA ESCA RP
Monterey County, California

Figure 8.3-5

T:\Projects\SEDR\Interim Action Ranges\MXD\8_4-1 Land Use Profile Reuse Plan.mxd - 6/4/2008 @ 3:31:53 PM

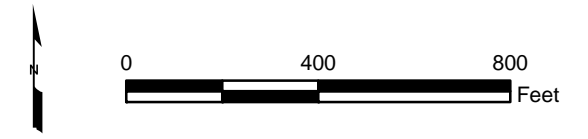
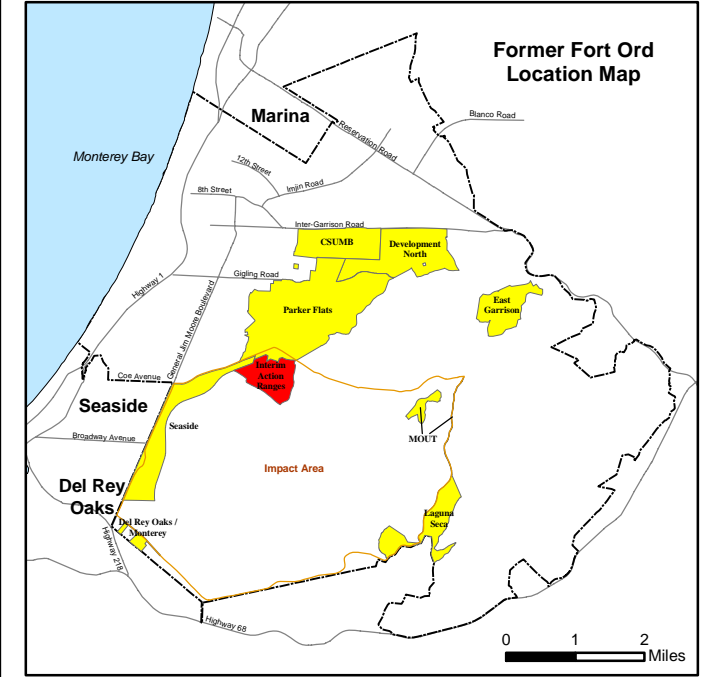


Legend

- Munitions Response Area
- Major Road
- E40 USACE Parcel

Future Land Use

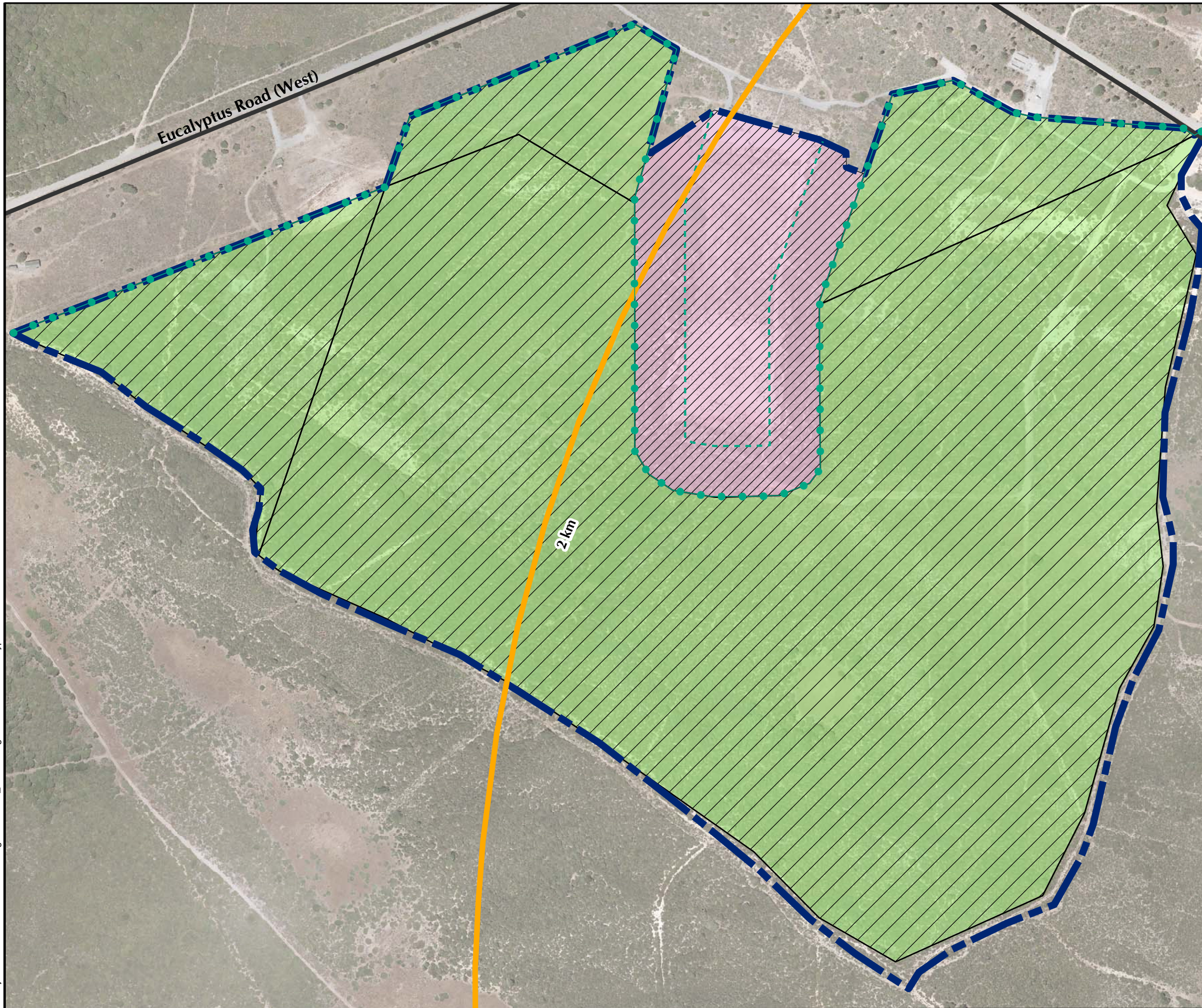
- Residential
- Non-Residential
- Habitat Reserve
- Borderland Interface
- 200-Foot Buffer from Borderland Interface








**Interim Action Ranges MRA
Land Use Profile
Reuse Plan**
FORA ESCA RP
Monterey County, California

Figure 8.4-1

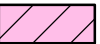




T:\Projects\SEDR\Interim Action Ranges\MXD\8_5-1 Ecological Profile Habitat Type.mxd - 6/4/2008 @ 3:33:52 PM

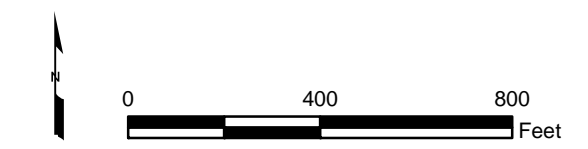
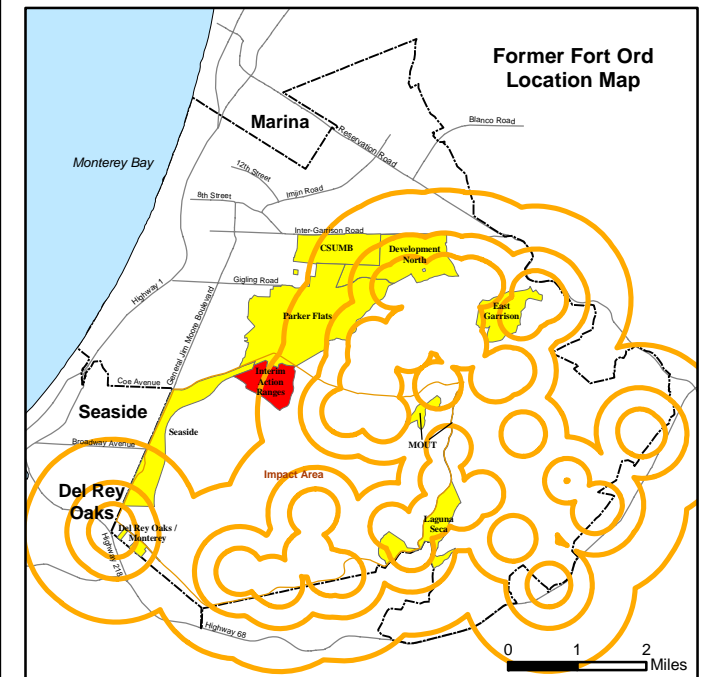


Legend

-  Munitions Response Area
-  California Tiger Salamander Buffer
-  Major Road
-  Borderland Interface
-  200-Foot Buffer from Borderland Interface

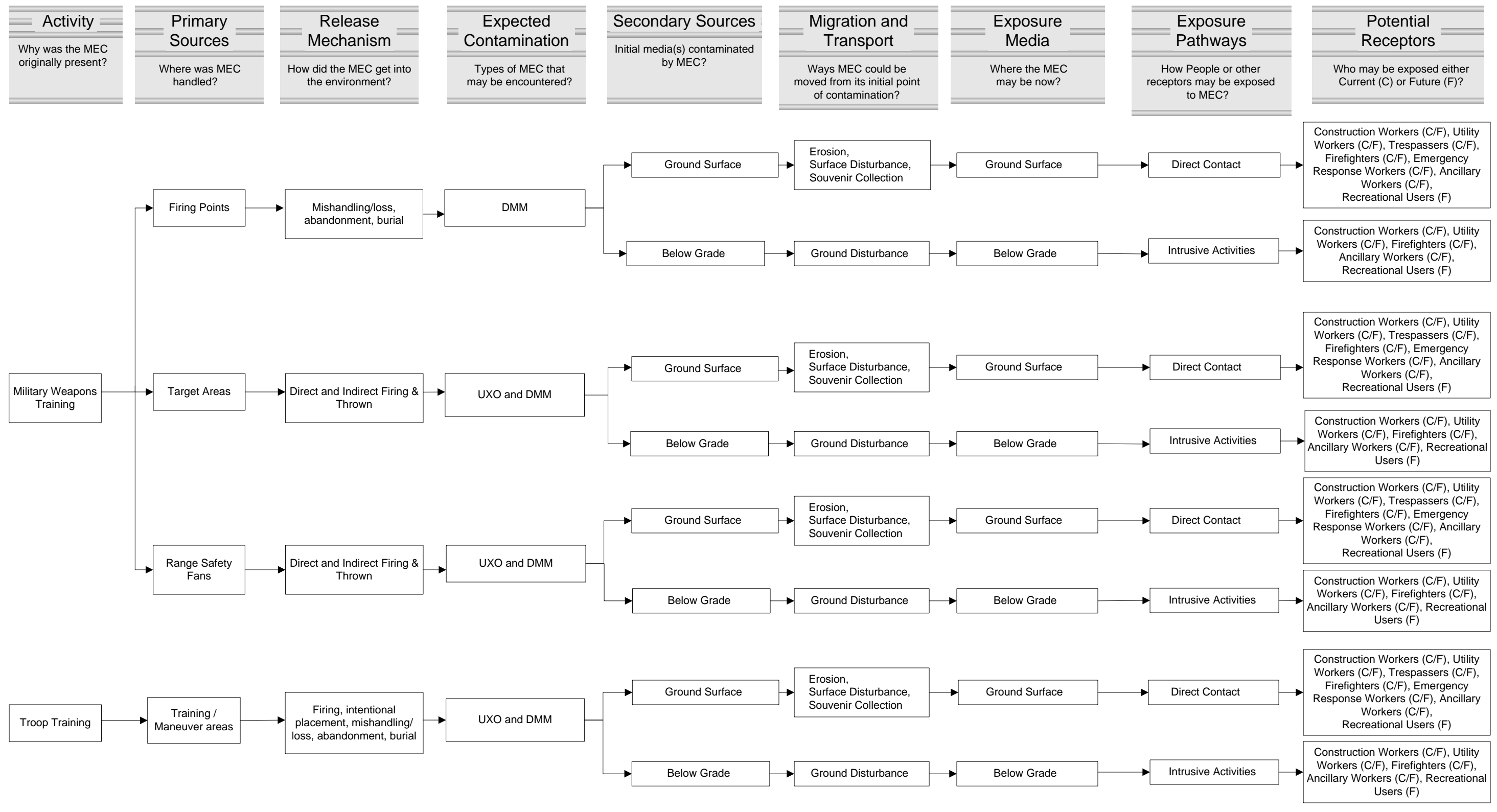
Habitat Management Plan Category



-  Development (includes future Residential and Non-Residential areas)
-  Development with Reserve or Restrictions
-  Habitat Corridor
-  Habitat Corridor with Development
-  Habitat Reserve



**Interim Action Ranges MRA
Ecological Profile
Habitat Type
FORA ESCA RP
Monterey County, California**

Figure 8.5-1



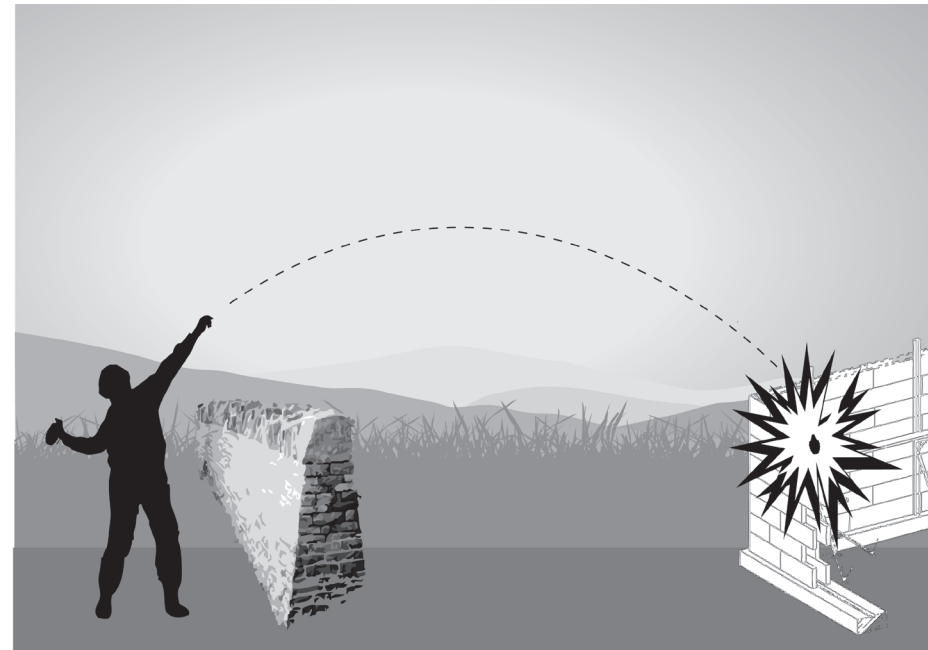



Westcliffe Engineers, Inc.

Interim Action Ranges MRA Pathway Analysis Flowchart

FORA ESCA RP
Monterey County, California

Figure 8.6-1



Thrown Ordnance



Burial / Mishandling / Loss



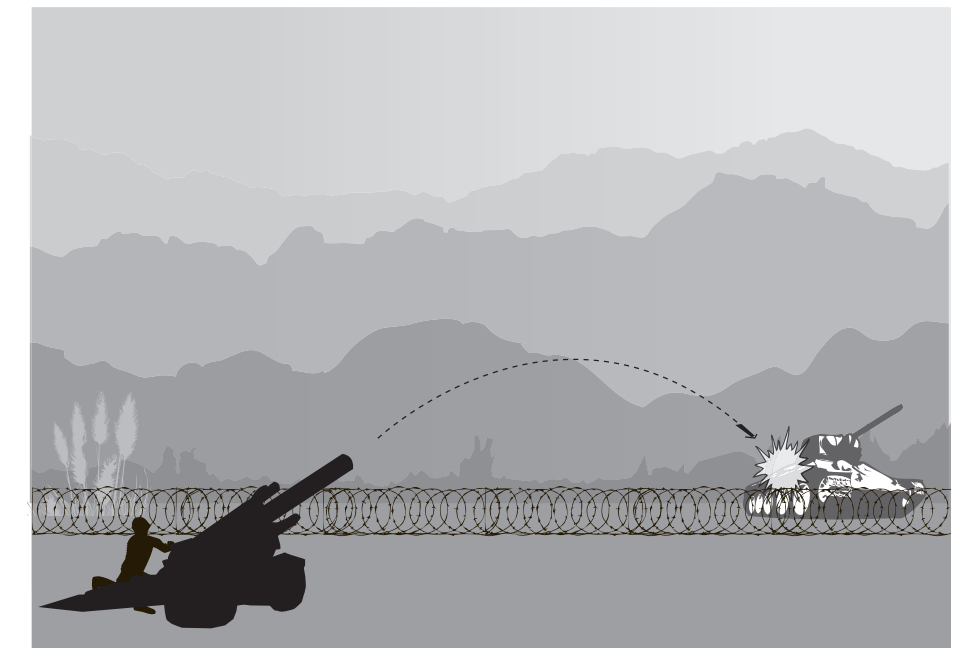
Troop Training



Direct Fire



Indirect Fire



Indirect Fire