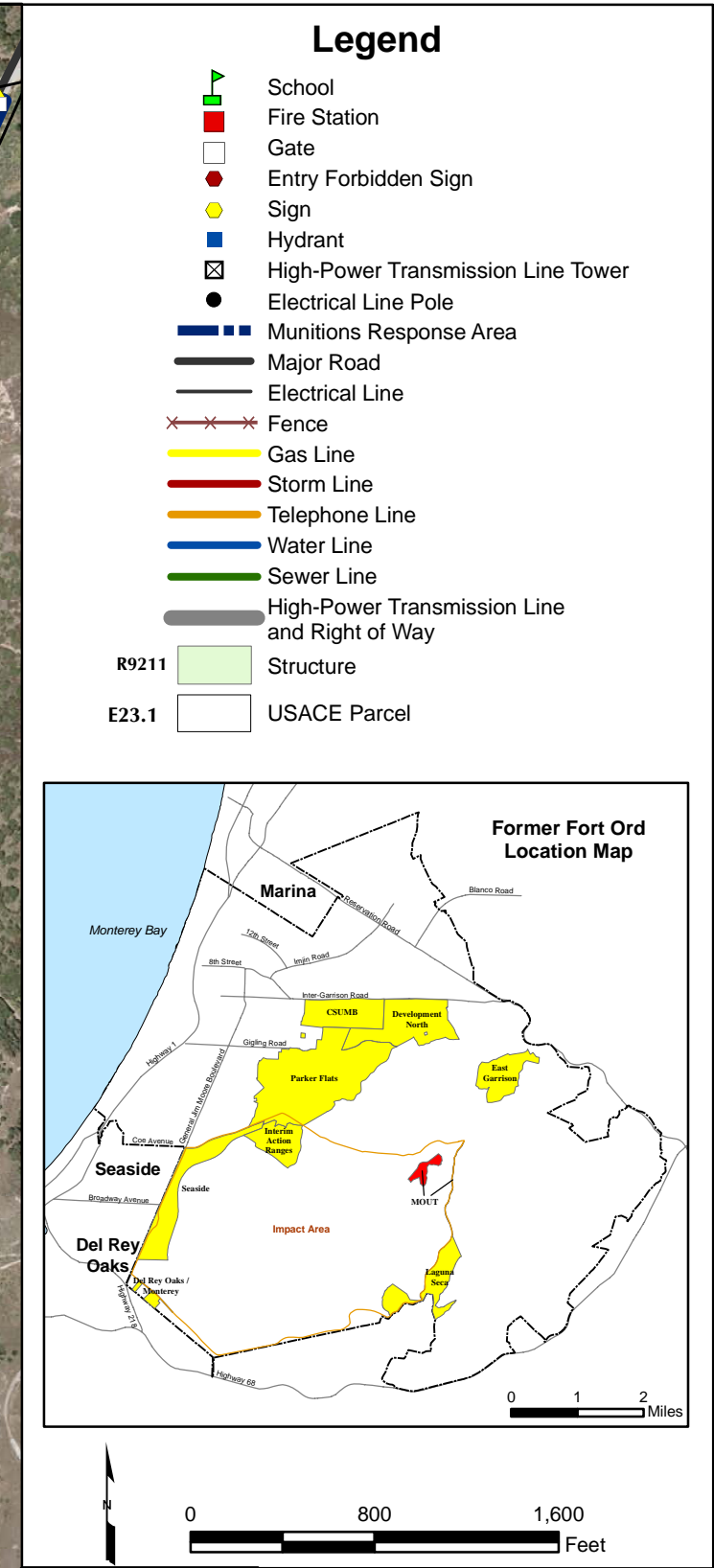
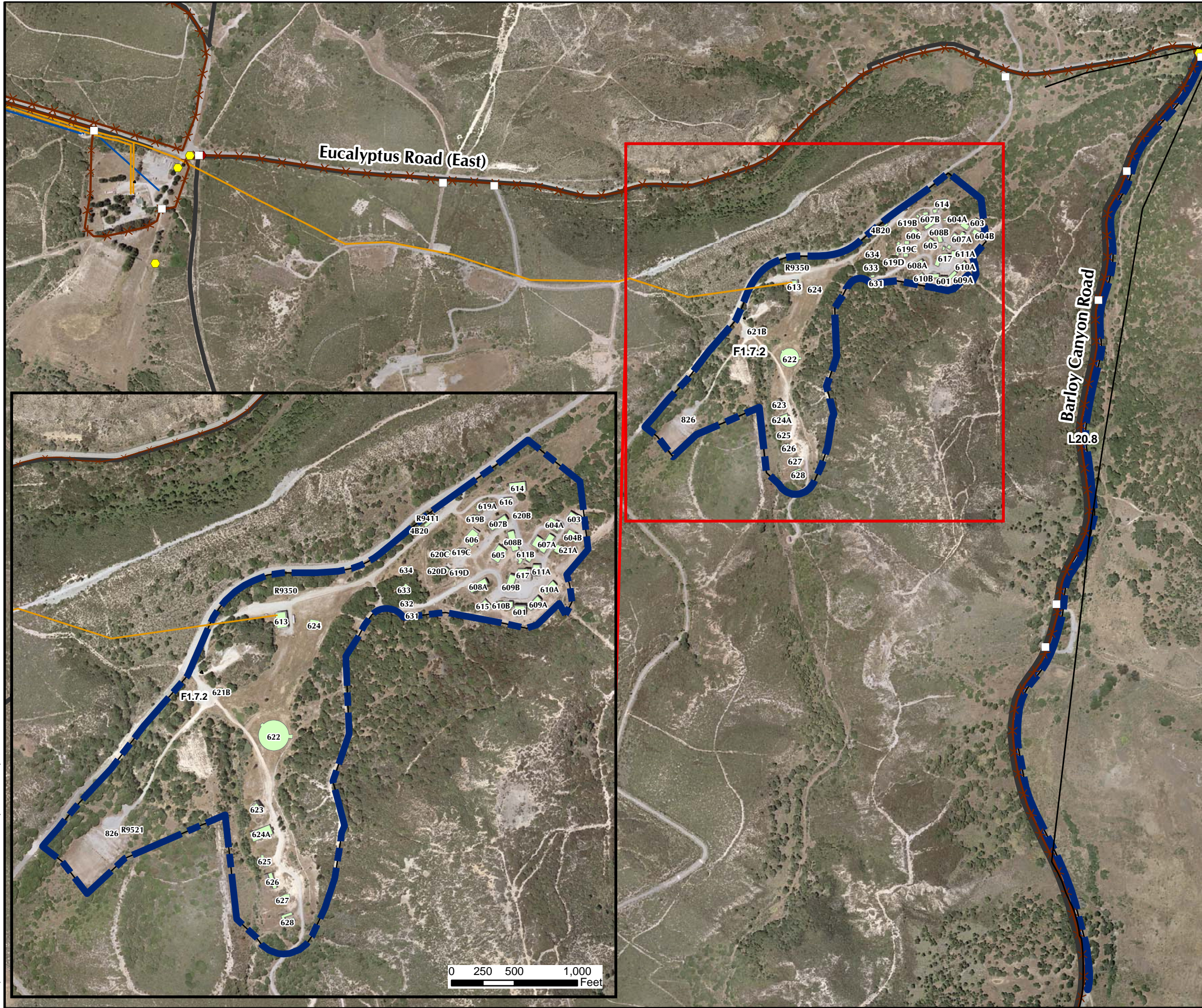




T:\Projects\SED\RMOUT\MXDs\9\_1-1 Facility Profile Physical Features.mxd - 6/5/2008 @ 2:15:05 PM



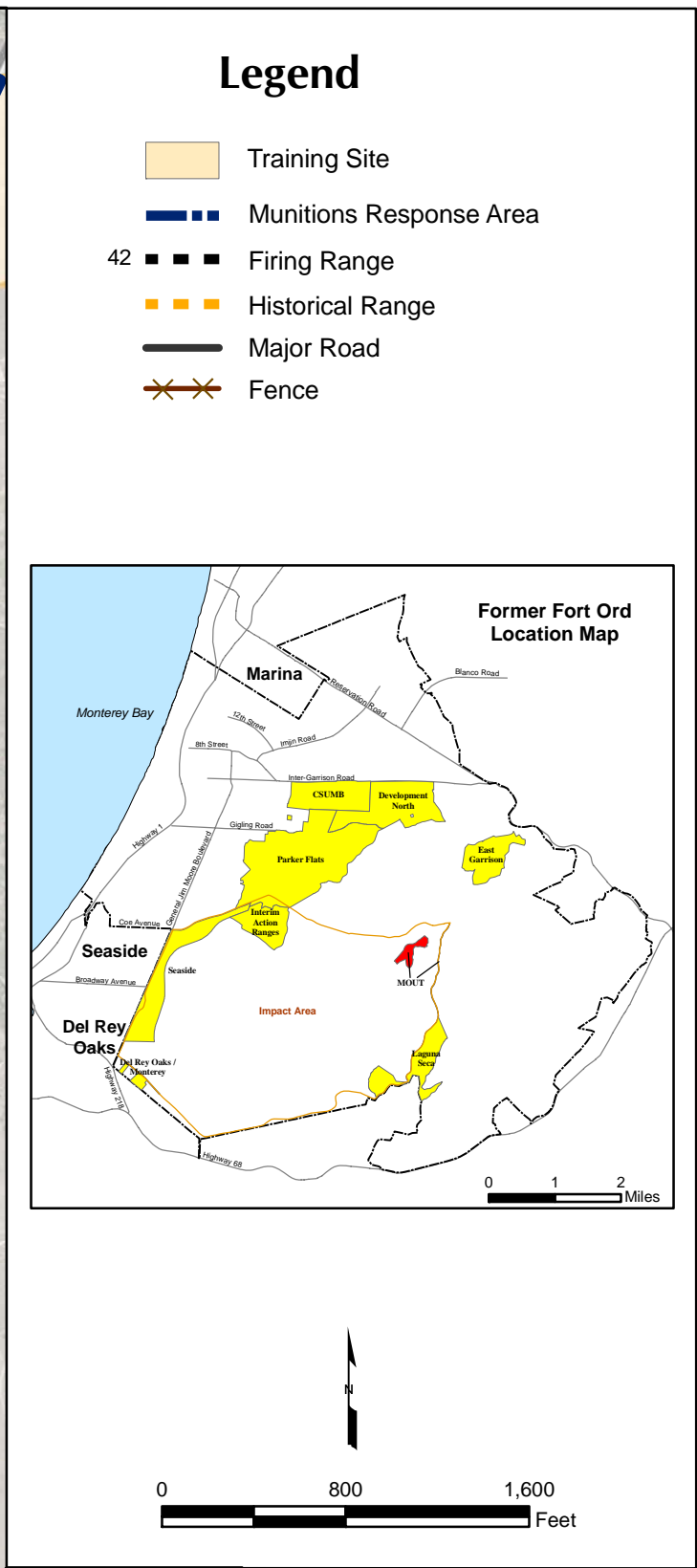
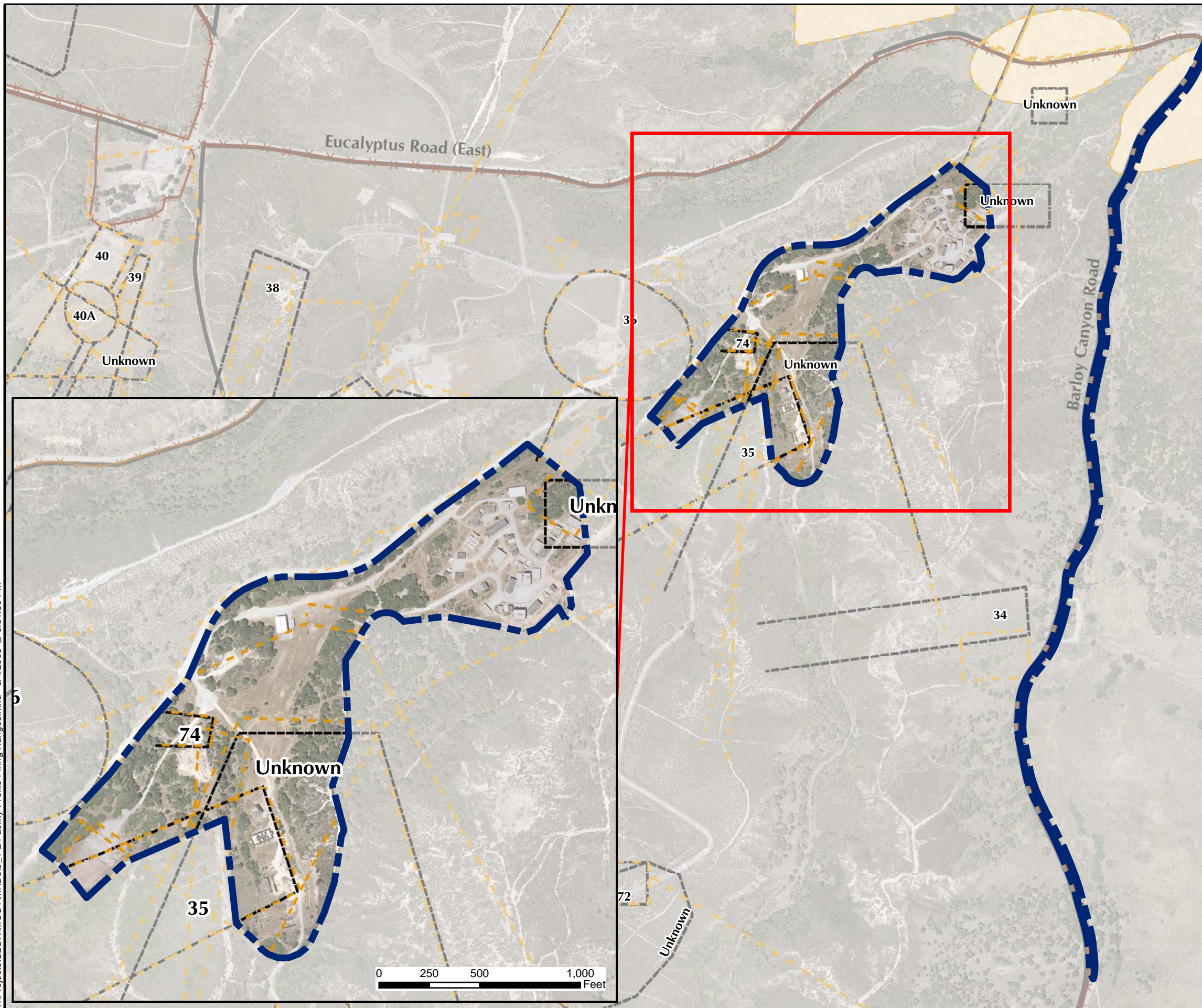
**Westcliffe Engineers, Inc.**



**MOUT Site MRA Facility Profile  
Physical Features**

FORA ESCA RP  
Monterey County, California

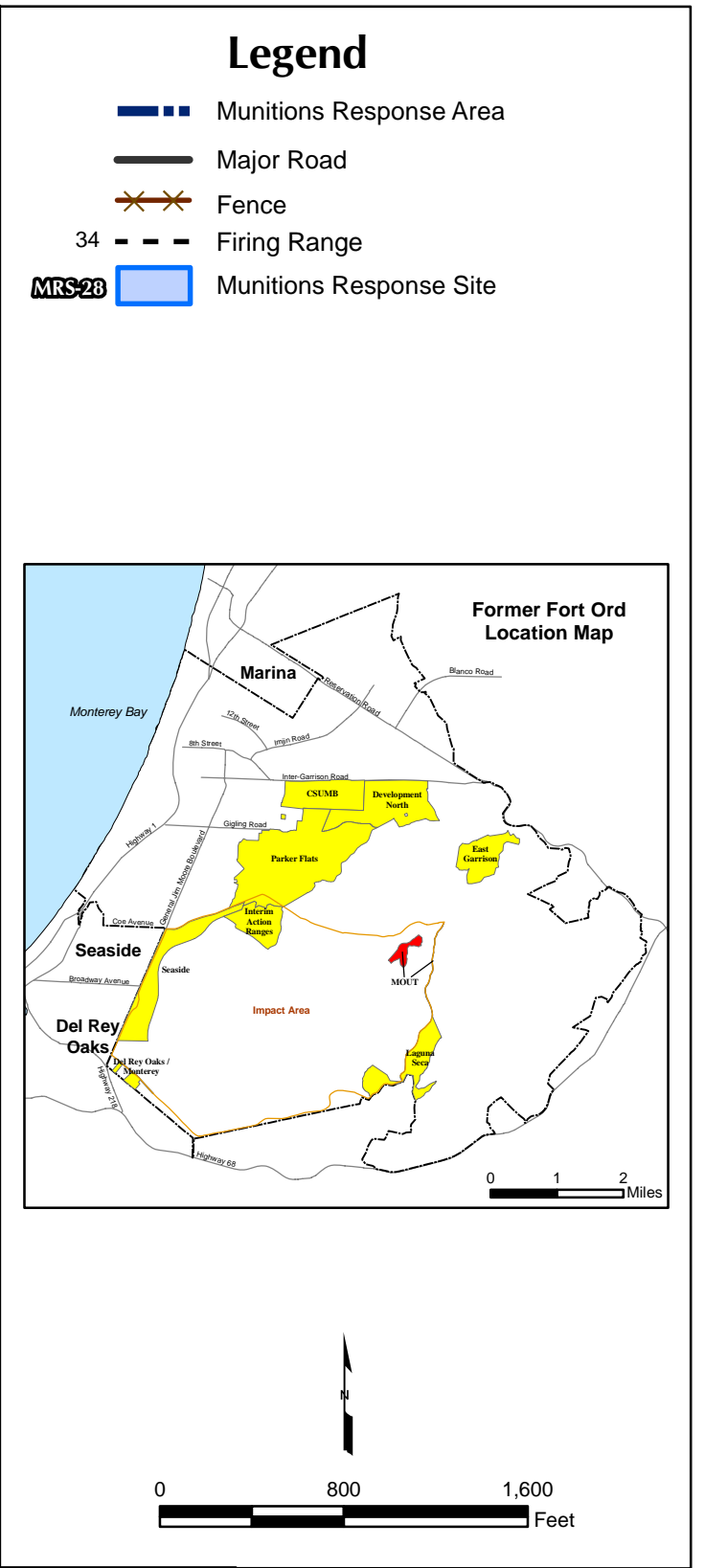
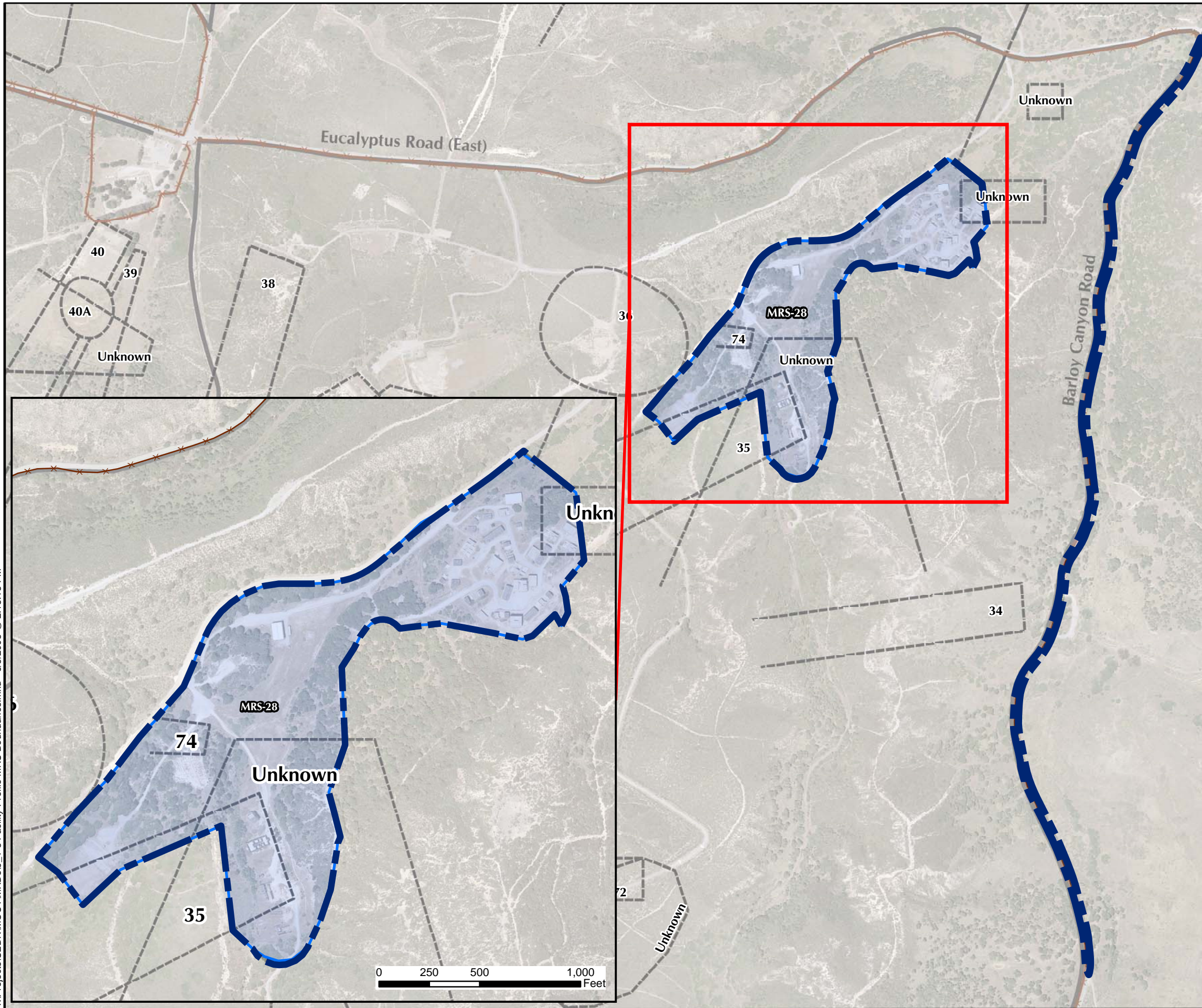
**Figure 9.1-1**

T:\Projects\SED\RM\OUT\MXD\9\_1-2 Facility Profile Firing Ranges.mxd - 6/4/2008 @ 3:51:30 PM



  <b>Westcliffe Engineers, Inc.</b>	<b>MOUT Site MRA Facility Profile</b> <b>Ranges and Training Sites</b>  FORA ESCA RP Monterey County, California
	<b>Figure 9.1-2</b>

T:\Projects\SEDR\MOUT\MXD\9\_1-3 Facility Profile MRS Boundaries.mxd - 6/5/2008 @ 2:15:13 PM



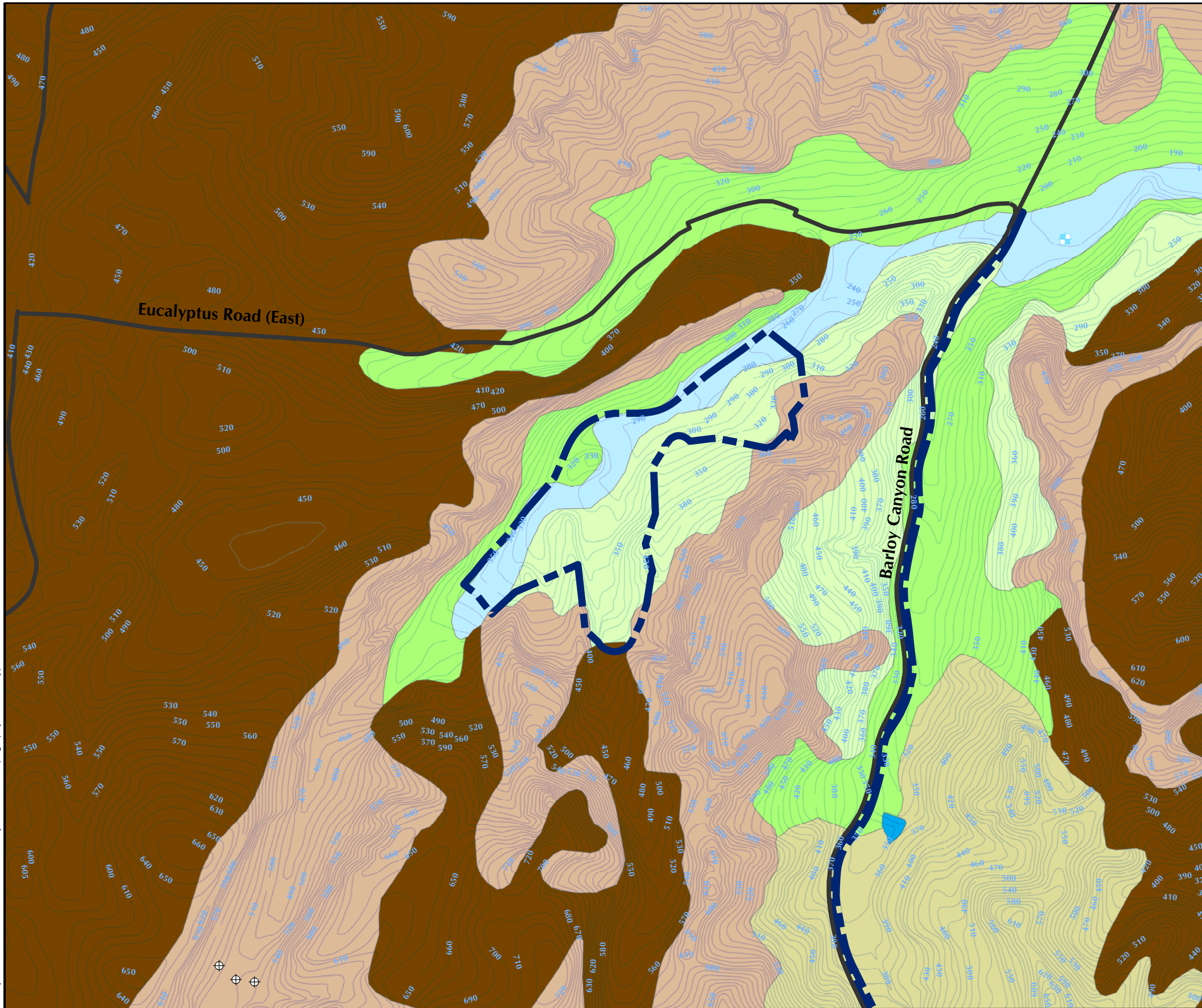
**LFR**  
**WESTON SOLUTIONS**  
 Westcliffe Engineers, Inc.

**MOUT Site MRA Facility Profile  
 Munitons Response Site  
 Boundaries**

FORA ESCA RP  
 Monterey County, California

**Figure 9.1-3**

T:\Projects\SEDR\MOUT\MXD\9\_2-1 Physical Profile Topography and Soil Type.mxd - 6/5/2008 @ 2:06:47 PM

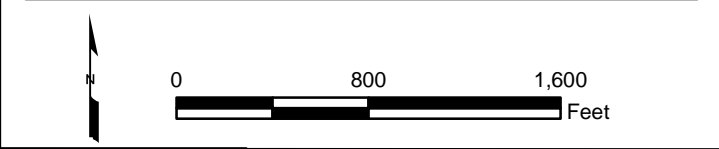
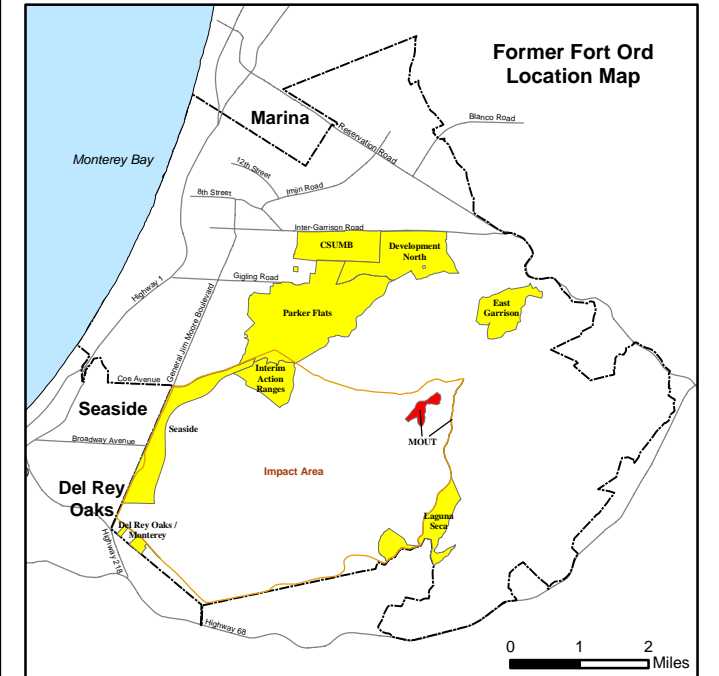


### Legend

- Abandoned Well
- Water Supply Well
- Topography 5ft
- Munitions Response Area
- Major Road

### Soil Type

- Arnold-Santa Ynez Complex
- Xerorthents, Dissected
- Arnold Loamy Sand, 15 to 50 Percent Slopes
- Arnold Loamy Sand, 9 to 15 Percent Slopes
- Baywood Sand, 2 to 15 Percent Slopes
- Santa Ynez Fine Sandy Loam, 15 to 30 Percent Slopes
- Aquic Xerofluvents
- Saturated Soil

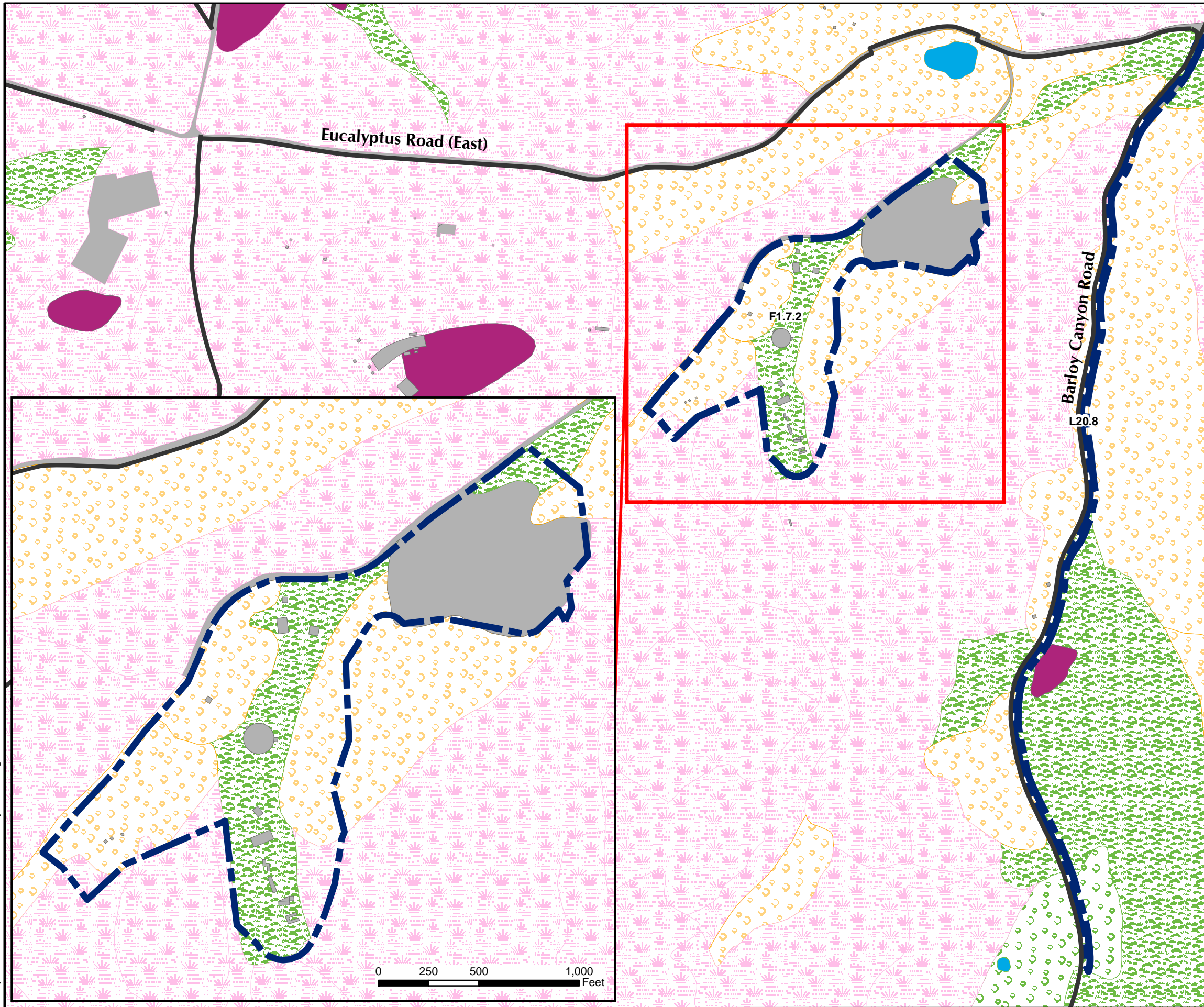


### MOUT Site MRA Physical Profile Topography and Soil Type

FORA ESCA RP  
Monterey County, California

Figure 9.2-1

T:\Projects\SEDR\MOUT\MXDs\9.2-2 Facility Profile Vegetation Communities.mxd - 6/4/2008 @ 3:51:42 PM



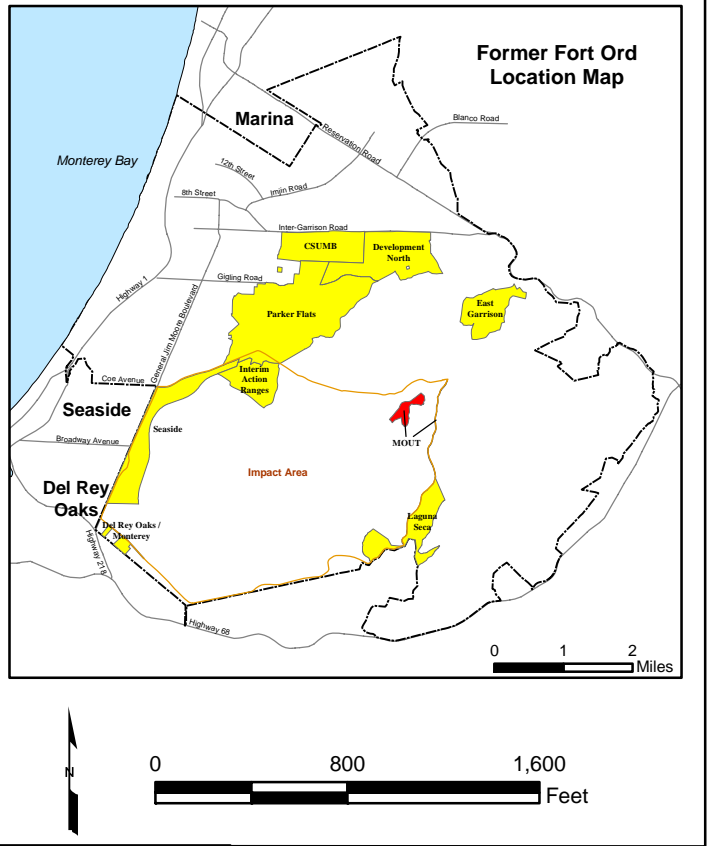
### Legend

- Munitions Response Area
- Major Road
- F1.7.2 USACE Parcel

### Vegetation Type

- Grassland
- Maritime Chaparral
- Inland Coast Live Oak Woodland
- Coast Live Oak Savanna
- Coastal Scrub
- Ice Plant Mats
- Aquatic Feature
- Developed / Disturbed
- Blue Wildrye Grassland

Source: Flora and Fauna Baseline Study of Fort Ord, California, Jones and Stokes Association Inc., December 1992.



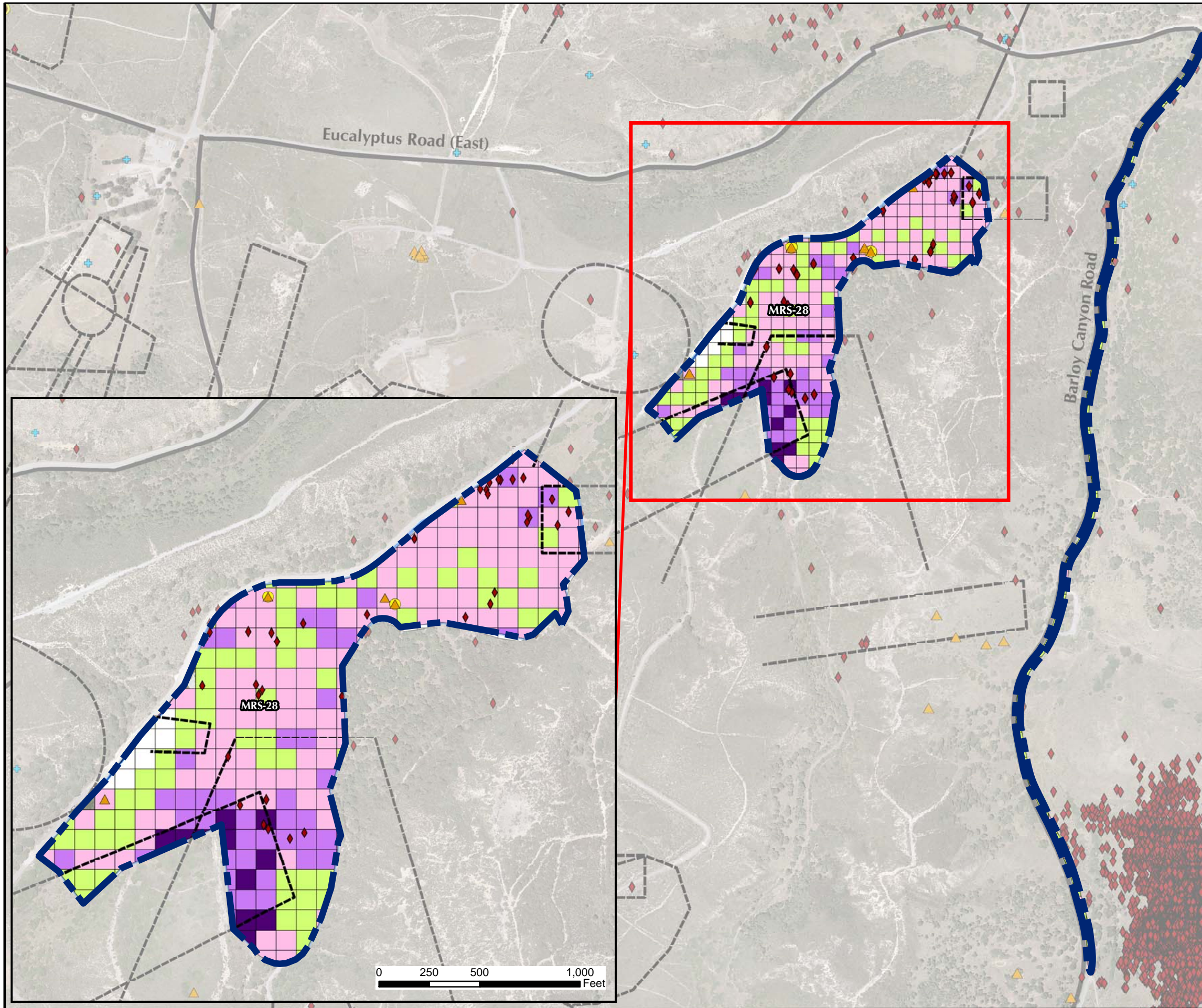
Westcliffe Engineers, Inc.

**MOUT Site MRA Physical Profile  
Generalized Vegetation Communities**

FORA ESCA RP  
Monterey County, California

Figure 9.2-2

T:\Projects\SEDR\MOUT\MXD\9\_3-1 Release Profile MEC and MD Locations.mxd - 6/4/2008 @ 4:29:21 PM



### Legend

- Munitions Response Area
- Firing Range
- MRS-28** Munitions Response Site
- Major Road

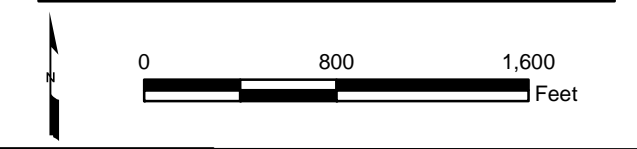
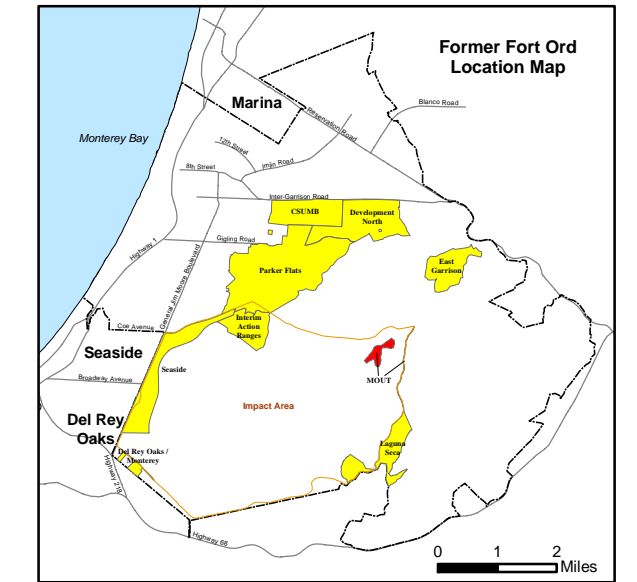
### MEC Type



- ◆ Unexploded Ordnance (UXO)
- ▲ Discarded Military Munition (DMM)
- + Insufficient Data (ISD)
- Burial Pit Containing MEC

### Munitions Debris (MD) by Weight (total pounds per grid)

	No Data
	0
	< 10
	10 to 100
	> 100

Note: Munitions Debris (MD) includes scrap related to small arms ammunition.



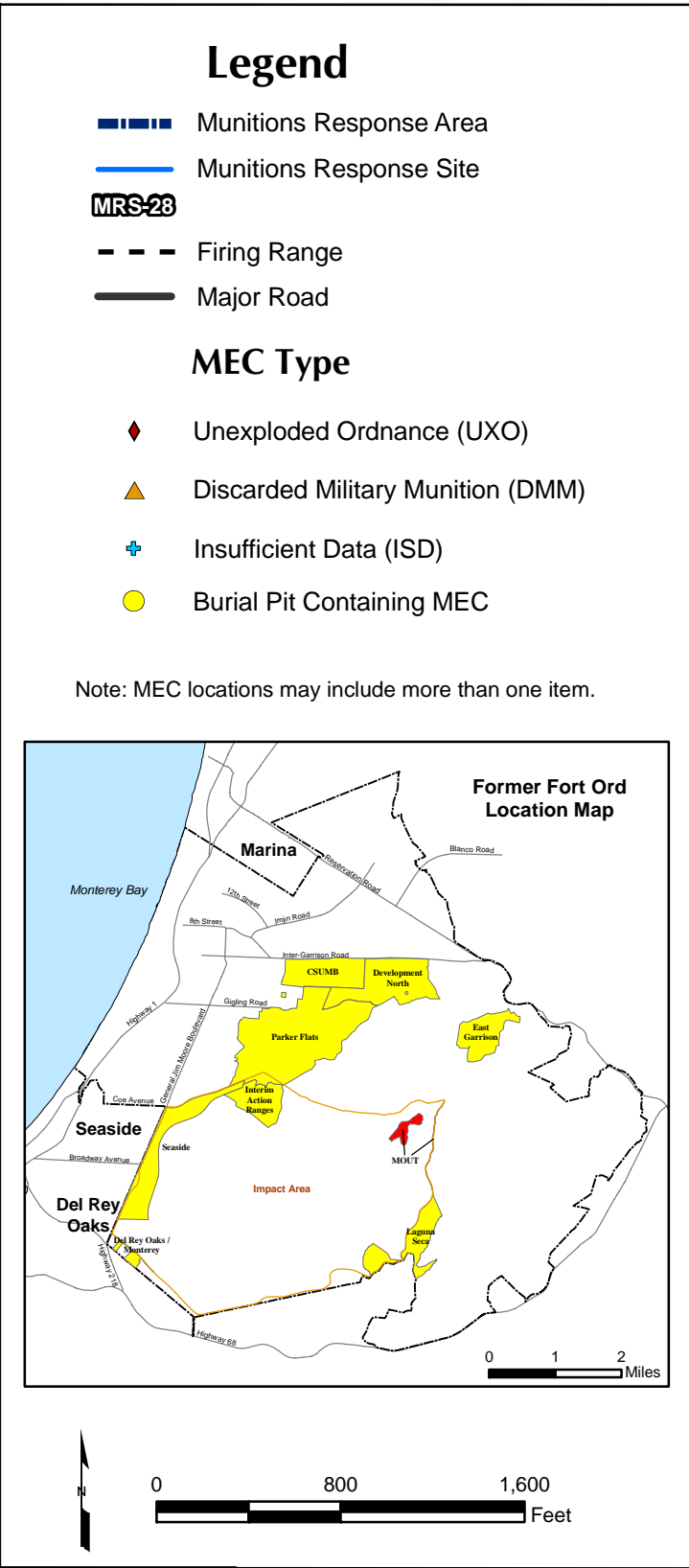
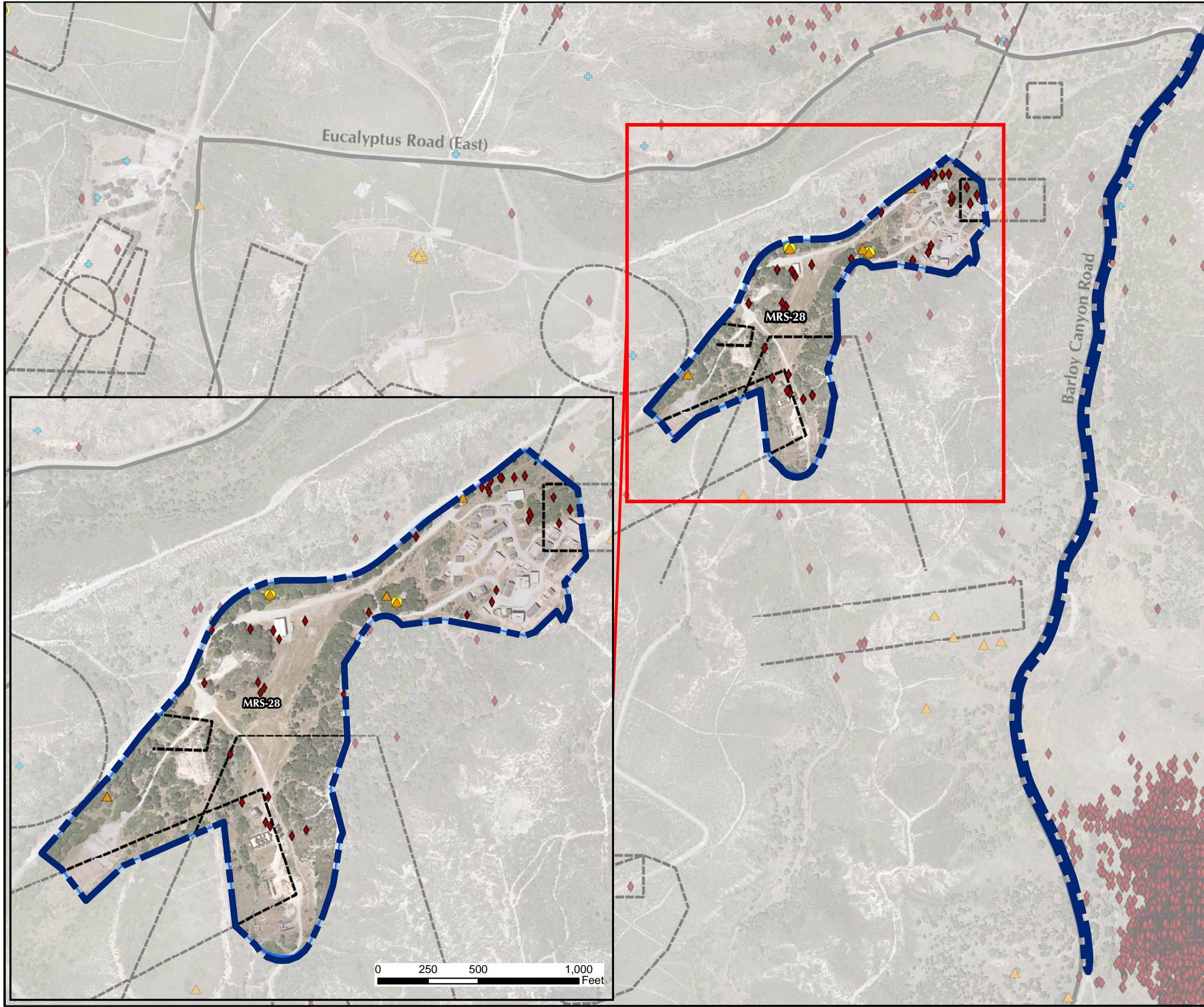





**Westcliffe Engineers, Inc.**

**MOUT Site MRA Release Profile  
MD and MEC Locations**

FORA ESCA RP  
Monterey County, California

Figure 9.3-1



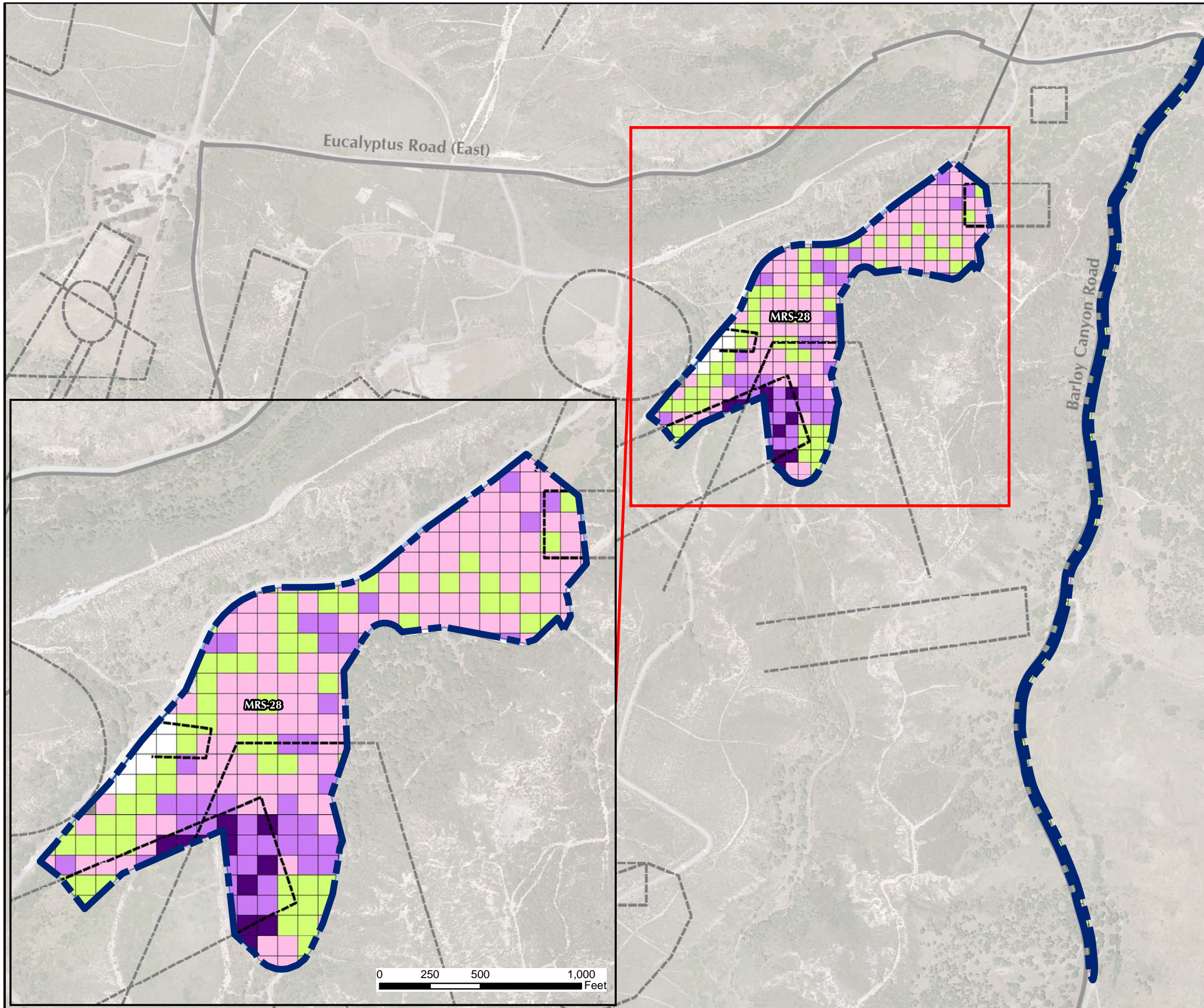
**Westcliffe  
Engineers, Inc.**

**MOUT Site MRA Release Profile  
MEC Locations**

FORA ESCA RP  
Monterey County, California

**Figure 9.3-2**

T:\Projects\SEDR\MOUT\MXD\9\_3-3 Release Profile MD Locations.mxd - 6/4/2008 @ 4:24:32 PM



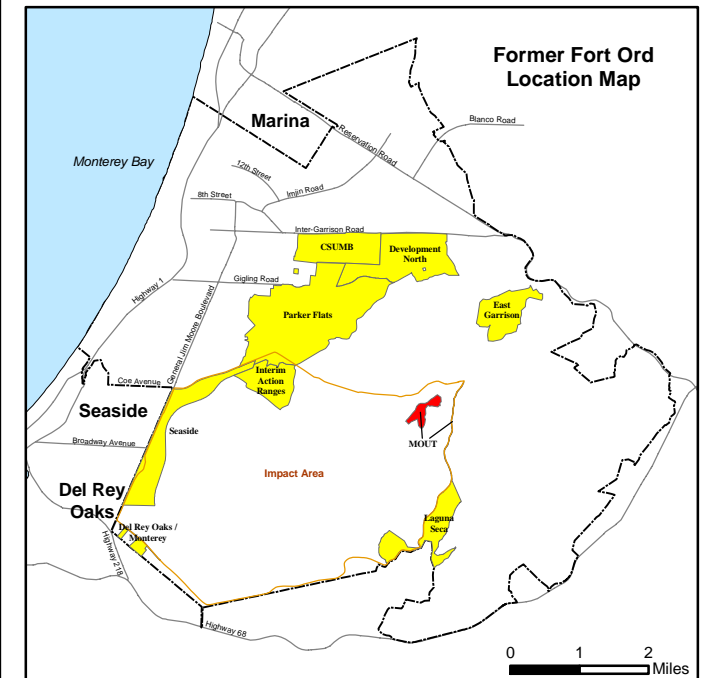
### Legend

- Munitions Response Area
- Munitions Response Site
- Firing Range
- Major Road

### Munitions Debris (MD) by Weight (total pounds per grid)

- No Data
- 0
- < 10
- 10 to 100
- > 100

Note: Munitions Debris (MD) includes scrap related to small arms ammunition.

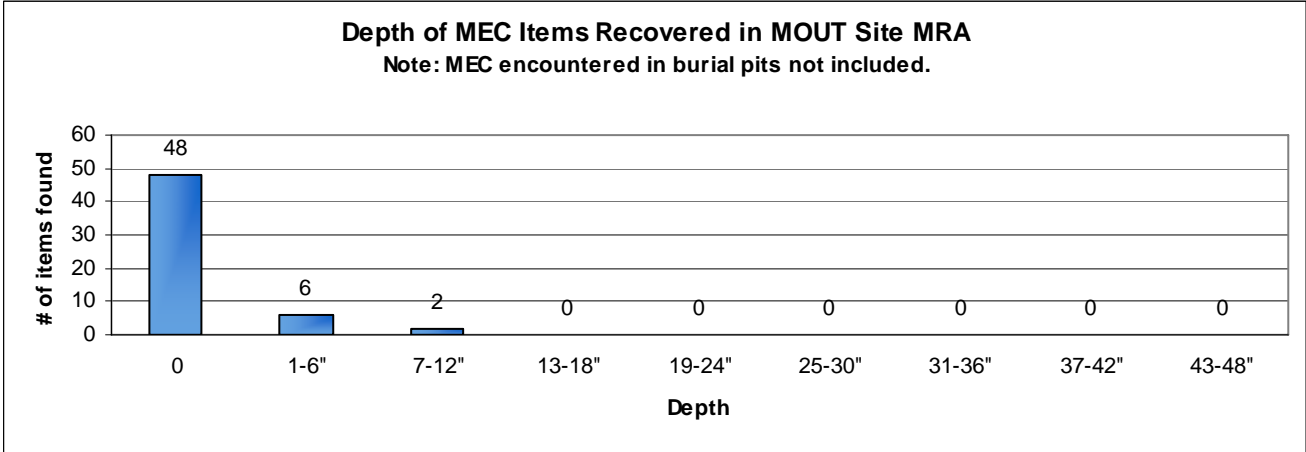


### MOUT Site MRA Release Profile MD Locations

FORA ESCA RP  
Monterey County, California

Figure 9.3-3





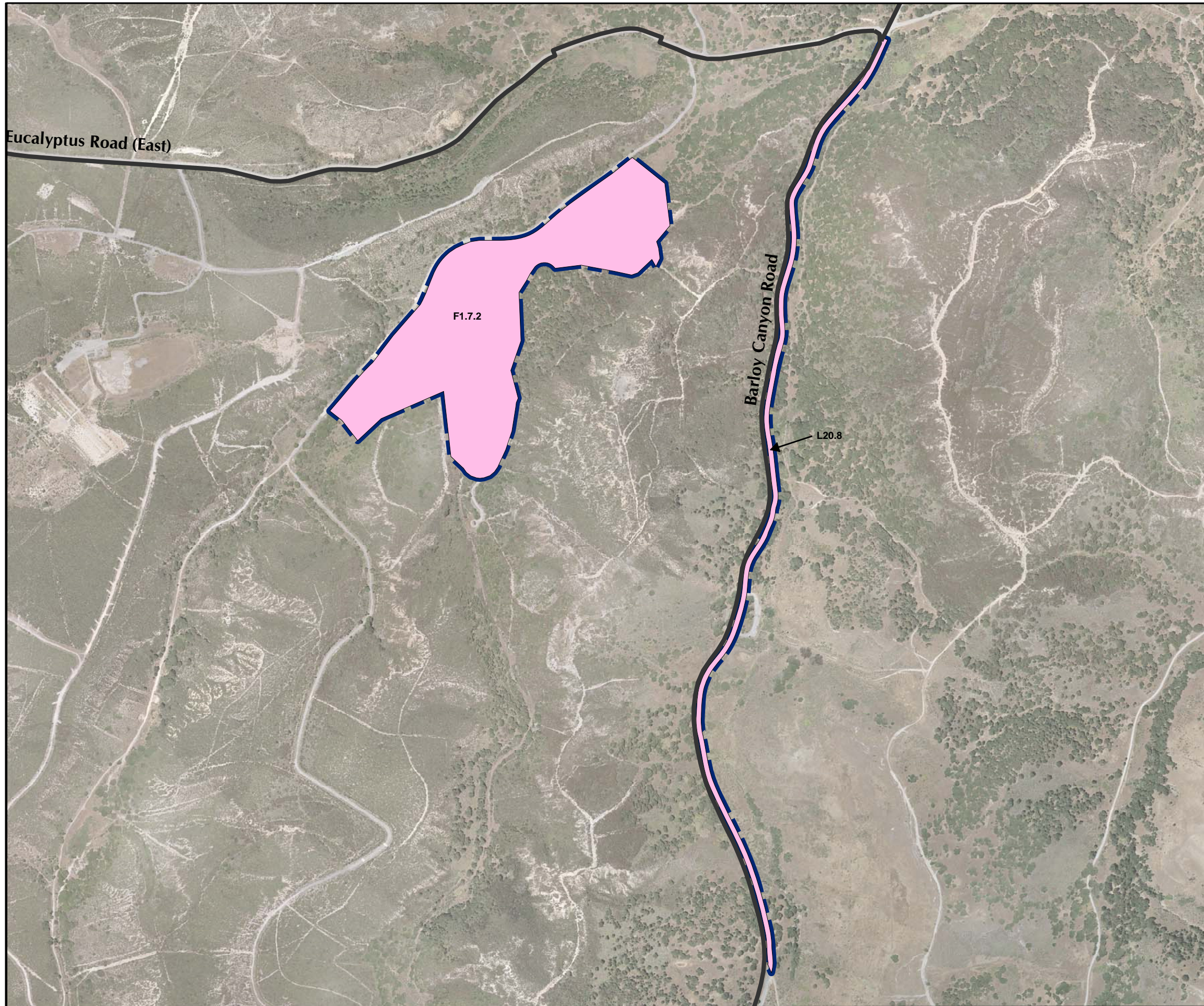
**Westcliffe  
Engineers, Inc.**

**MOUT Site MRA  
Distribution of MEC  
Recovered by Depth Interval**



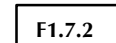
FORA ESCA RP  
Monterey County, California

**Figure 9.3-4**

T:\Projects\SEDR\MOUT\MXD\9\_4-1 Land Use Profile Reuse Plan.mxd - 6/4/2008 @ 5:16:03 PM

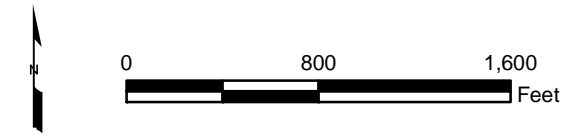
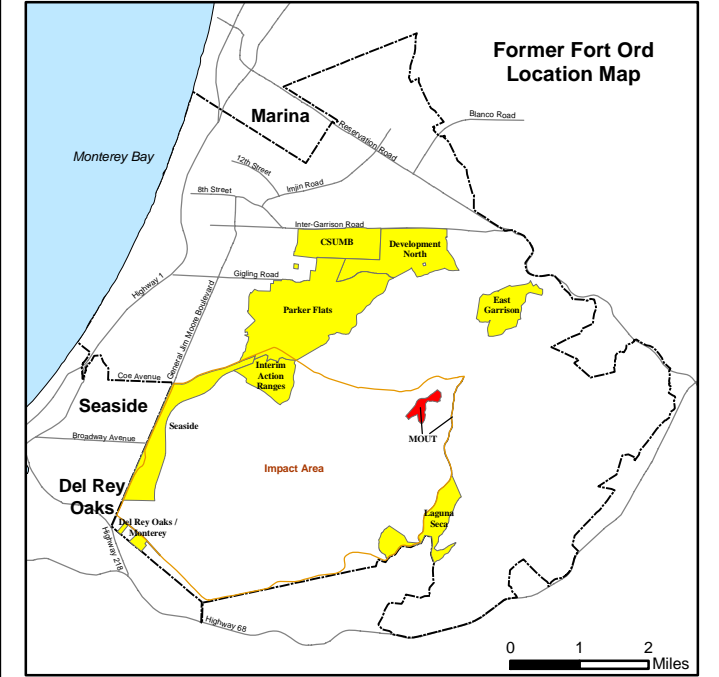


### Legend

-  Munitions Response Area
-  Major Road
-  F1.7.2 USACE Parcel

### Future Land Use

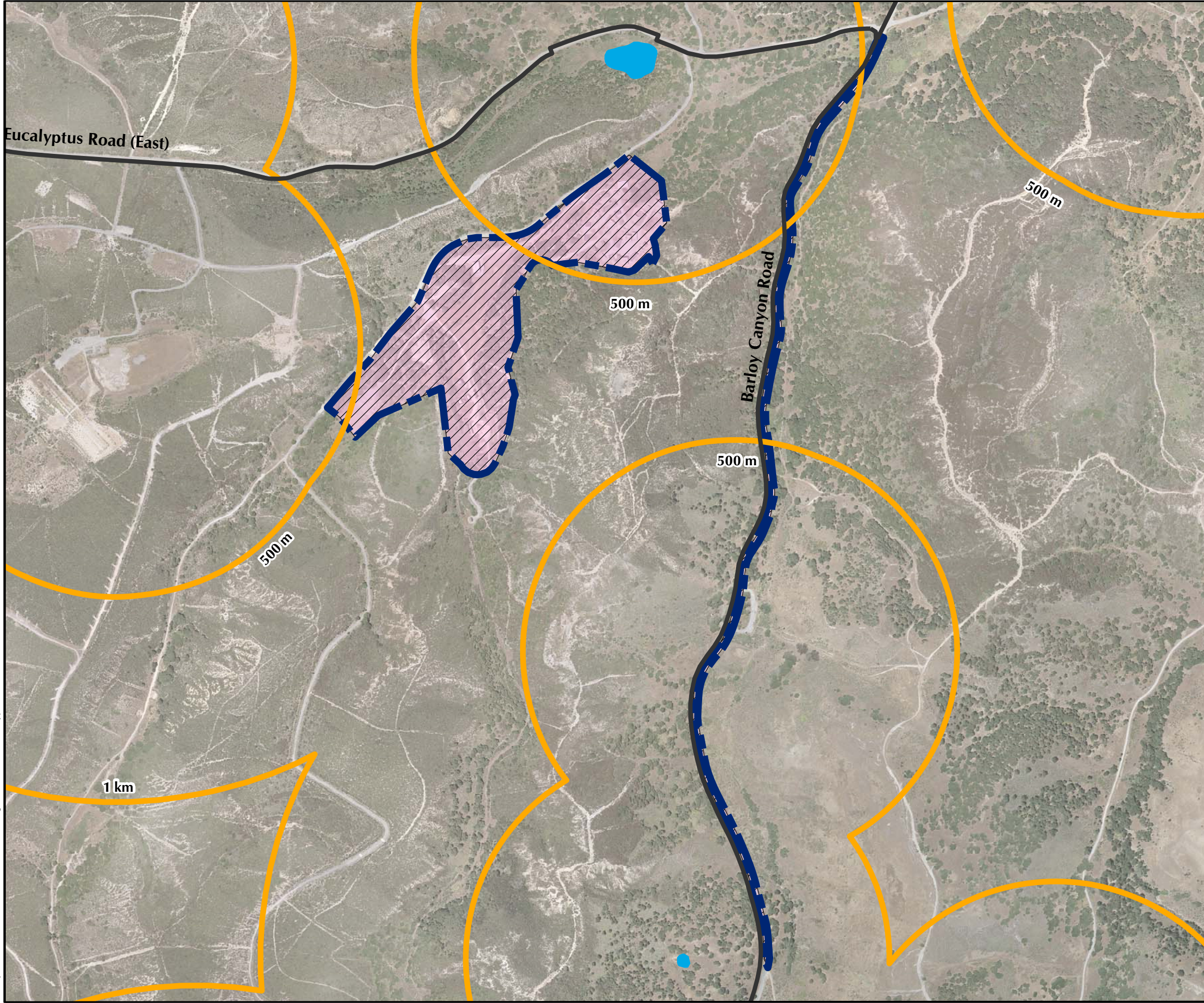
-  Residential
-  Non-Residential
-  Habitat Reserve









**MOUT Site MRA Land Use Profile Reuse Plan**  
 FORA ESCA RP  
 Monterey County, California

Figure 9.4-1

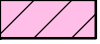


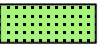

T:\Projects\SEDR\MOUT\MXDs\9\_5-1 Ecological Profile Habitat Type.mxd - 6/4/2008 @ 5:16:09 PM

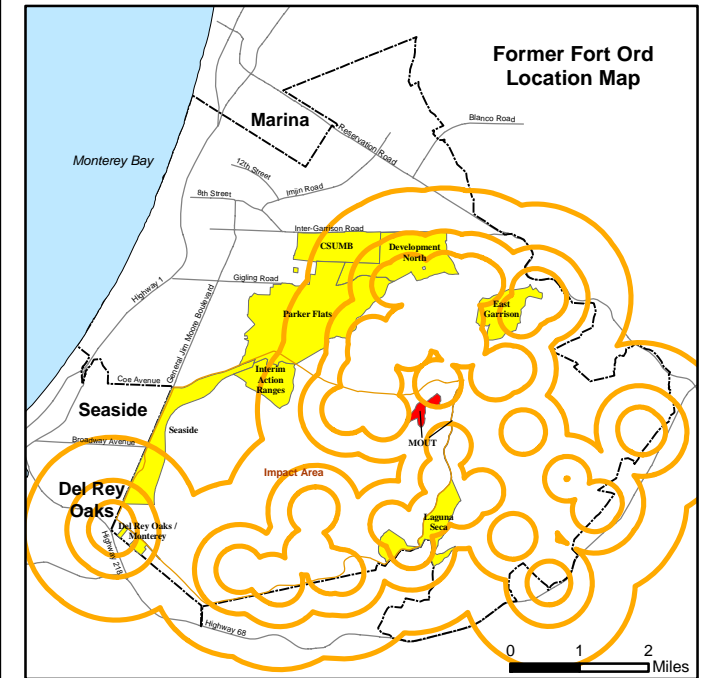


### Legend

-  Munitions Response Area
-  California Tiger Salamander Buffer
-  Major Road
-  Borderland Interface
-  200-Foot Buffer from Borderland Interface
-  Aquatic Features

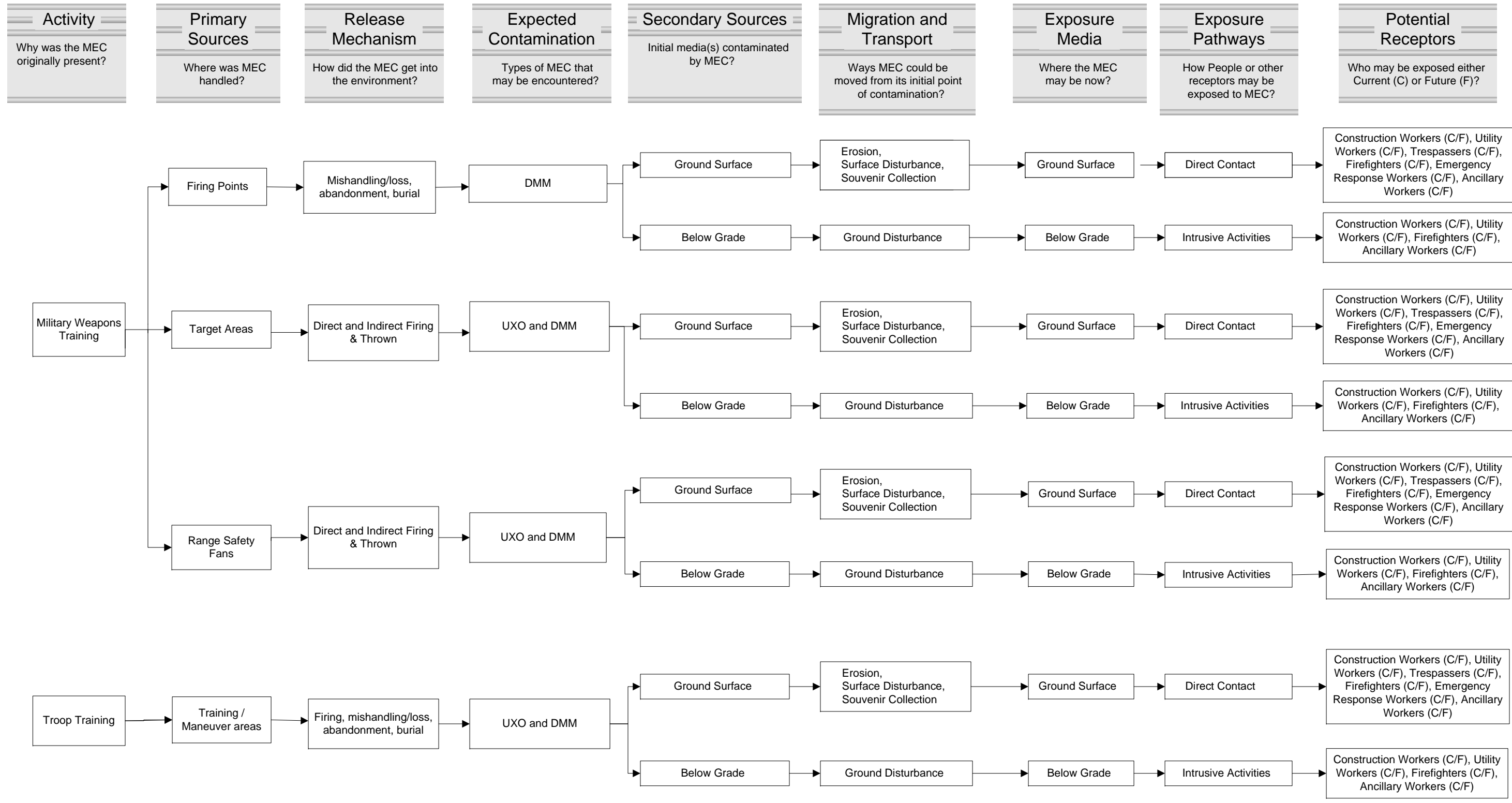
### Habitat Management Plan Category

-  Development (includes future Residential and Non-Residential areas)
-  Development with Reserve or Restrictions
-  Habitat Corridor
-  Habitat Corridor with Development
-  Habitat Reserve



**MOUT Site MRA**  
**Ecological Profile Habitat Type**  
 FORA ESCA RP  
 Monterey County, California

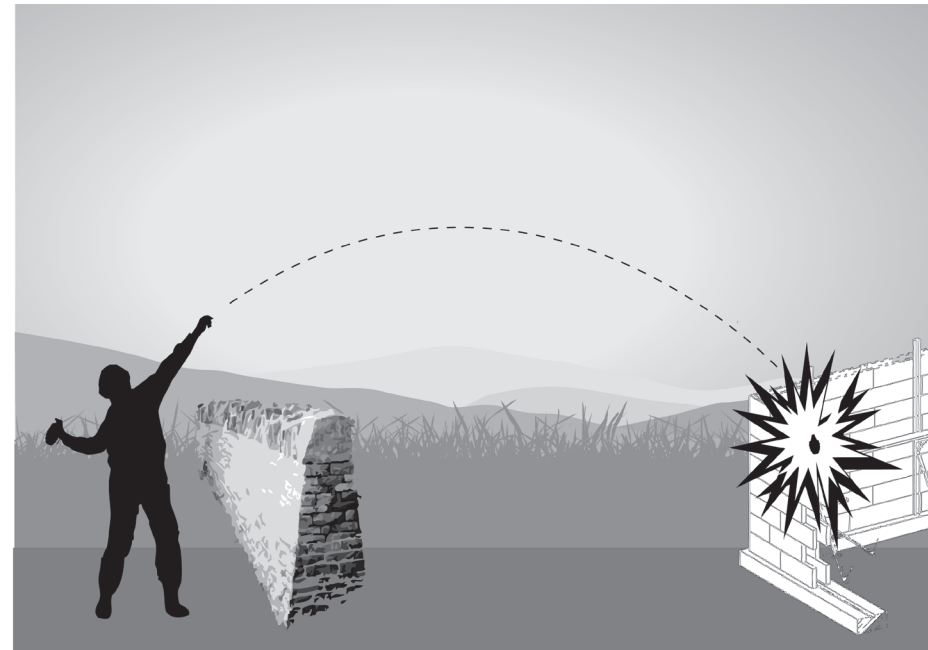
Figure 9.5-1



**MOUT Site MRA  
Pathway Analysis Flowchart**

FORA ESCA RP  
Monterey County, California

**Figure 9.6-1**



Thrown Ordnance



Burial / Mishandling / Loss



Firing



Direct Fire



Indirect Fire