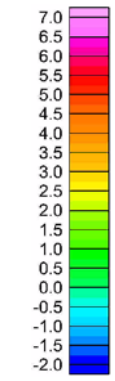
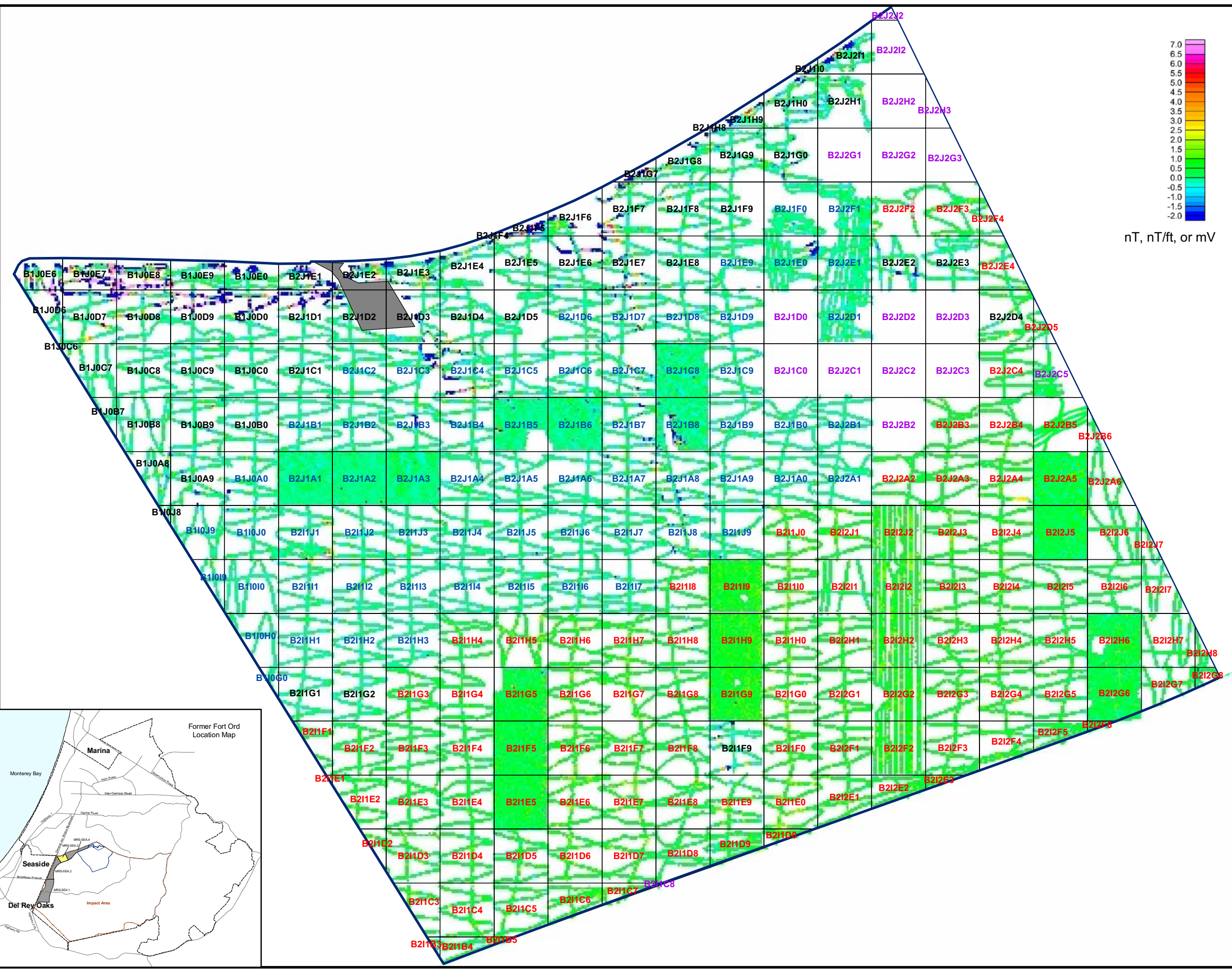


Map 5-3 MRS-SEA.3 QC-2 Geophysical Survey Results

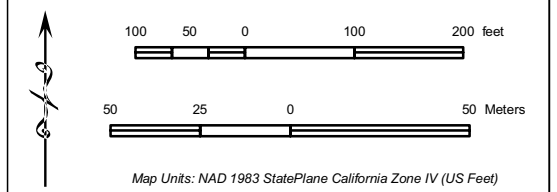
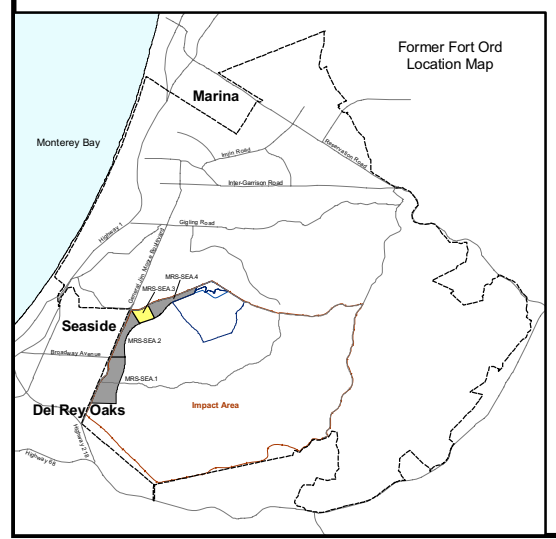


nT, nT/ft, or mV



- Instrumentation**
- EM61-MK2
 - G-858 (Total Field)
 - G-858 (Vertical Gradient)
 - Schonstedt
 - Asphalt
 - MRS-SEA.3

Map 3, FORA ESCA RP
QC-2 Approach for MRS
Seaside 1-4



U.S. ARMY CORPS
OF ENGINEERS



PARSONS

DESIGNED BY:	DRJ	FORMER FORT ORD MONTEREY, CALIFORNIA	
DRAWN BY:	DRJ		
CHECKED BY:	ARH	PRINT DATE: Jun 21, 2005 at 09:02 AM	CONTRACT: DACA05-00-D-0003
SUBMITTED BY:	GWG	AERIAL PHOTOGRAPHY:	SCALE: 1:2,100
FILE:	SOURCE OF DATA: Fort Ord MMRP Database		