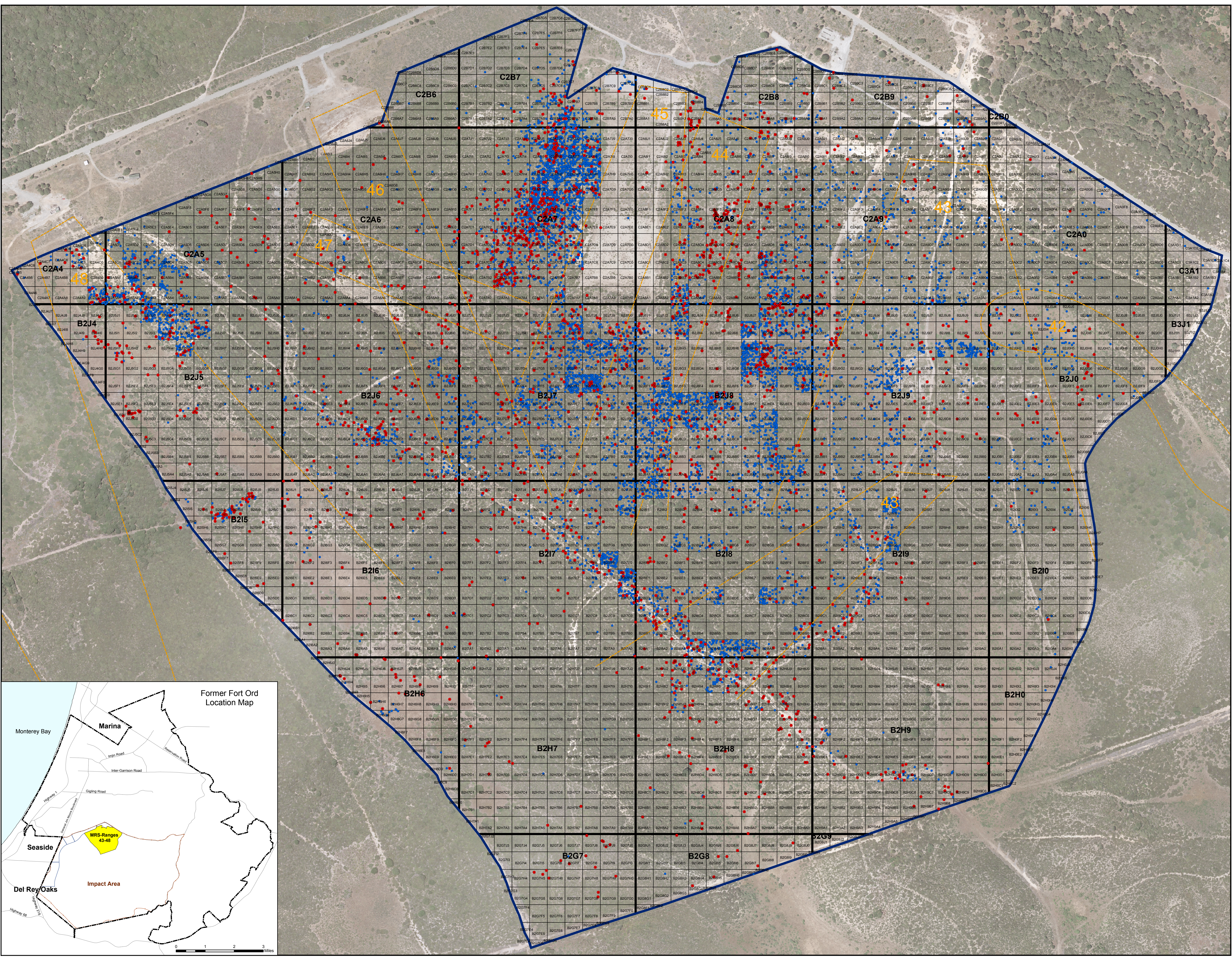


**Appendix A**  
**Map 1**  
**MRS-Ranges 43-48**  
**Interim Action**  
**Items Encountered**



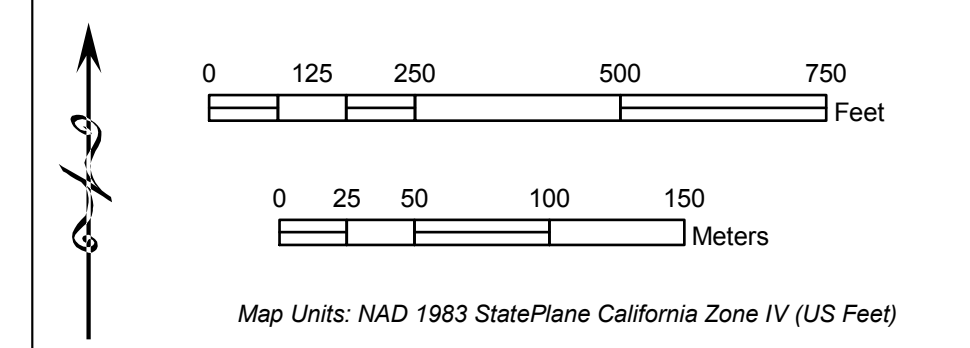
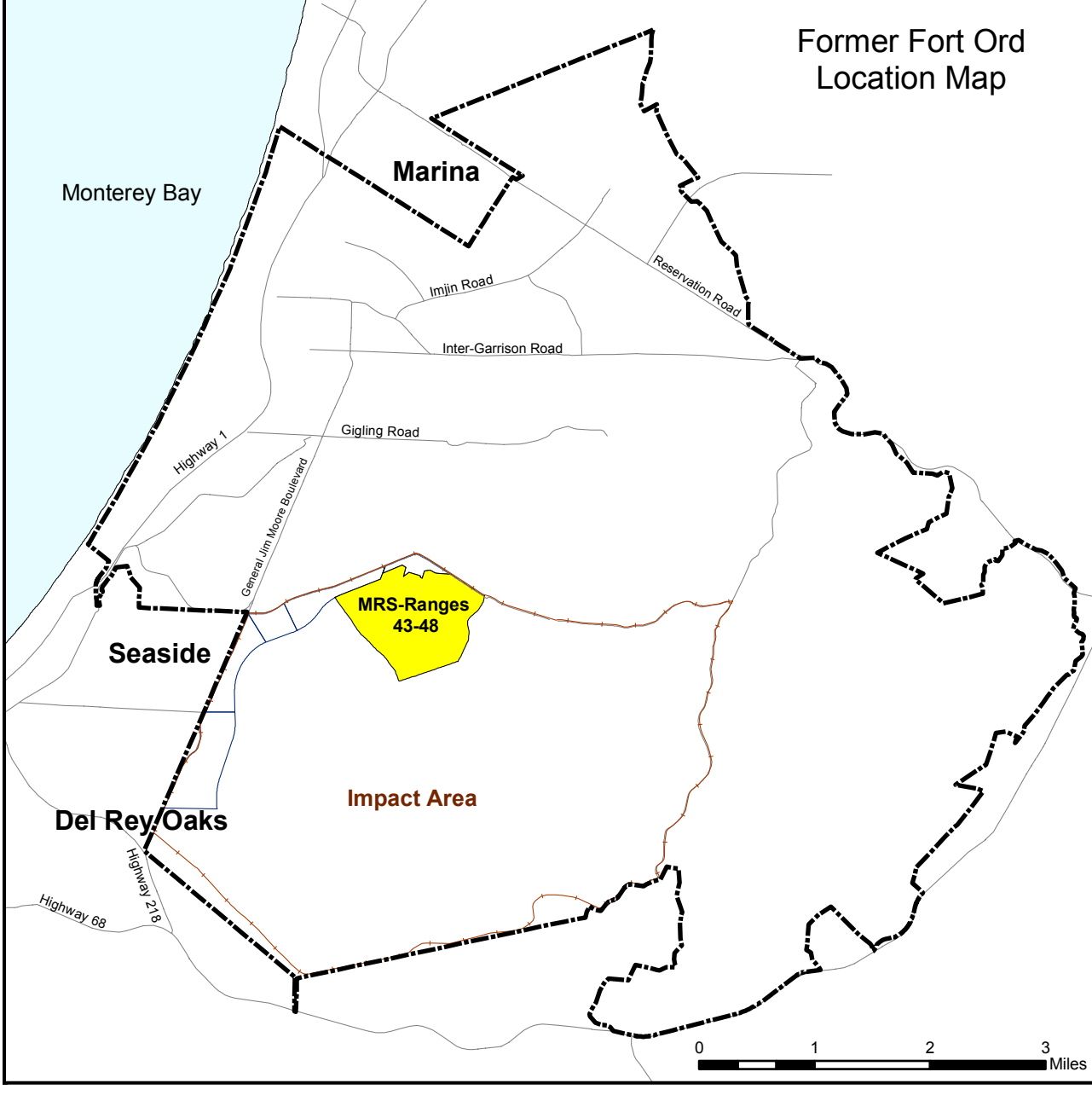
• MEC  
• MD-E, MD  
 Ranges  
 100ft Grid  
 1000ft Grid  
 MRS Ranges 43-48



MEC/MD-E, MD symbol represents location of one or more items

1,000-ft by 1,000-ft grids displayed with Master Grid System ID used during surface TCRA.

100-ft by 100-ft grids displayed with Master Grid ID (top) and respective grid IDs used during previous sampling and removal activities (bottom).

Because MEC, MD-E, and munitions debris removed during the sifting process were unavoidably commingled and therefore cannot be associated with a specific location, they do not appear on this map.



 U.S. ARMY CORPS OF ENGINEERS		 PARSONS	
DESIGNED BY:	DRJ	<b>FORMER FORT ORD</b>	
DRAWN BY:	DRJ	<b>MONTEREY, CALIFORNIA</b>	
CHECKED BY:	ARH	PRINT DATE:	May 26, 2006 at 10:30 AM
SUBMITTED BY:	GWG	AERIAL PHOTOGRAPHY:	2003 6-in Resolution Color
FILE:	GeoDatabase\R43_48\I_D_Plate.mxd	CONTRACT:	DACA05-00-D-0003
		SOURCE OF DATA:	Fort Ord MMRP Database
		SCALE:	1:2,800