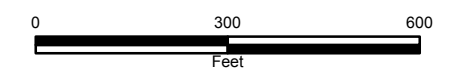
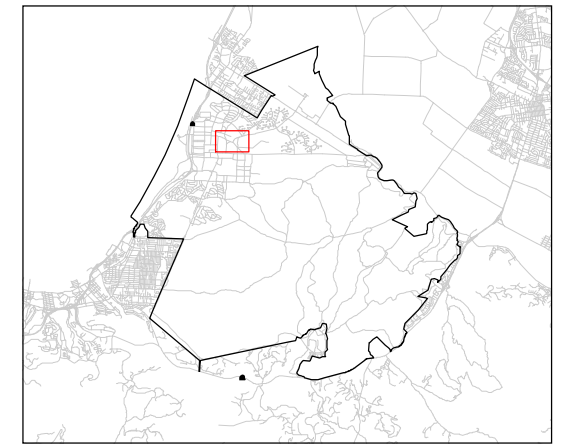


**EXPLANATION**

- MRS-2 ASR SITE BOUNDARY
- PARCEL BOUNDARY
- SITE 16 & 17 BOUNDARIES
- HFA GRID BOUNDARY
- EXCAVATION LIMITS
- INCIDENTAL MUNITIONS ITEMS
- TRACK 0 AREA



AREA SHOWN ON PLATE OUTLINED



Note: Munitions debris found by HFA are not shown because geographic coordinates of the munitions debris were not documented.

DRAWN: FPC	PROJECT NO: 4088053153.7		Track 1 Plug-In Approval Memorandum Multiple Sites, Groups 1-5 Former Ford Ord, California	MRS-2 2003 Aerial Photograph	PLATE
ENGINEER:	SCALE:				G1-4
CHECKED:	APPROVED:				
DATE: 03/2006	DATE:				