

MR Status
Fort Ord MR BCT
10 October 2018

BLM AREA B

Security measures and Outreach

- The website and kiosks will be updated with current trail closure information on 10/11.
- Notice and warning signs, trail closure fences, and boundary fences are in place around the ongoing work areas in Units A, B, C, B-3W, B-3E, and B-2A.
- Boundary fences and trail closure fences will be removed from around Unit A pending the prescribed burn.

Vegetation Removal

- Additional, non-critical mowing in secondary and tertiary containment lines (CL) for Unit 31 has been identified and is in progress.
- All mastication and manual vegetation removal in support of the Unit A burn is complete.

Surface Munitions and Explosives of Concern (MEC) removal

- Surface MEC removal is complete in Unit B.
- Surface MEC removal is complete in the Unit A primary CLs and the 16 acres north of Lion's Revenge Road.
- Surface MEC removal along the 12-foot trail footprint of Trail 62 in Unit B-2A, concurrent with analog subsurface MEC removal, was completed on 9/13.

Digital Geophysical Mapping (DGM)

- DGM in Unit B burn area is in progress.

Subsurface MEC Removal

- Analog subsurface MEC removal on the 12-ft wide Trail 62 footprint in Unit B-2A is complete.
- Subsurface MEC removal on Trails 16 and 56 in Unit B-3E is in progress.
- Subsurface MEC removal in the Unit B-3W 100-foot buffer is in progress.
- Intrusive investigation of 69 targets of interest for the Unit B-2A 4.2-inch mortar with unknown filler investigation is in progress.

IMPACT AREA

FIELD ACTIVITIES

Unit 3 Livens/Stokes Investigation

- The remaining 155 identified anomalies outside of original area of interest in previous Unit 3 Livens/Stokes investigation of potential unknown filler items are now being investigated.

Impossible Canyon Road and Wildcat Ridge Road Fuel Break Work

- Mastication in support of the fuel break and realignment work along Impossible Canyon Road and Wildcat Ridge Road is complete.
- Surface MEC removal in the fuel break grids is in progress.
- DGM will proceed following surface MEC removal.

Unit 23 Risk Reduction

- Unit 23 Risk Reduction MM 2x2 cued survey of 1,279 targets was completed on 7/25 and a target dig list was finalized.
- Intrusive investigation of the anomalies will begin following completion of higher priority work.

Fuel Breaks QC Digs

- Mowing to support additional verification fieldwork in specific segments of the fuel breaks is in progress.

Subsurface MEC Removal and Restoration Activities

- Preliminary site work has begun on the Watkins Gate Burn Area (WGBA) mortar pits restoration project.
- Work to remove up to 32 buildings in Impact Area units and Unit B-3W is expected to proceed following asbestos and lead-based paint sampling. This work will include Iron Triangle cleanup and OU2 landfill activities.

Target/Debris Disposal

- No demolition operations have been conducted since the last MR BCT.
- MD scrap sorting began on 8/29 and was completed in early September. Additional MD scrap sorting will remain on hold pending additional munitions debris accumulation.








OTHER ACTIVITIES

Vernal Pool Anomaly Investigation

- Following cueing of 1,007 targets with the Metal Mapper 2x2, 436 targets were identified for excavation.
- An approach to perform target excavation while minimizing impacts to the ponds has been developed and special equipment to implement the excavation is available.
- Excavation of the vernal pool targets is expected to begin in mid-October.

MMRP SITE SECURITY PROGRAM

- Trespass Incident Reports
 - Last 25 days (ending 10/5/2018): 0
 - Year to Date: 7
- Munitions Incident Reports
 - Last 25 days (ending 10/5/2018): 0
 - Year to Date: 8
- Community Education Participants– Year to Date: 265
- Munitions Recognition and Safety Training Participants – Year to Date: 233

-  Access Corridor Roads (Authorized Vehicles Only)
-  Trails Closed 24 Hours A Day
-  Trails May Be Closed During Work Hours (M-Th 6:30AM - 5:00PM)
-  BLM Single Track Trail (OPEN)
-  Roads (Authorized Vehicles Only)
-  Active Cleanup Area
-  Impact Area MRA - Closed to Public

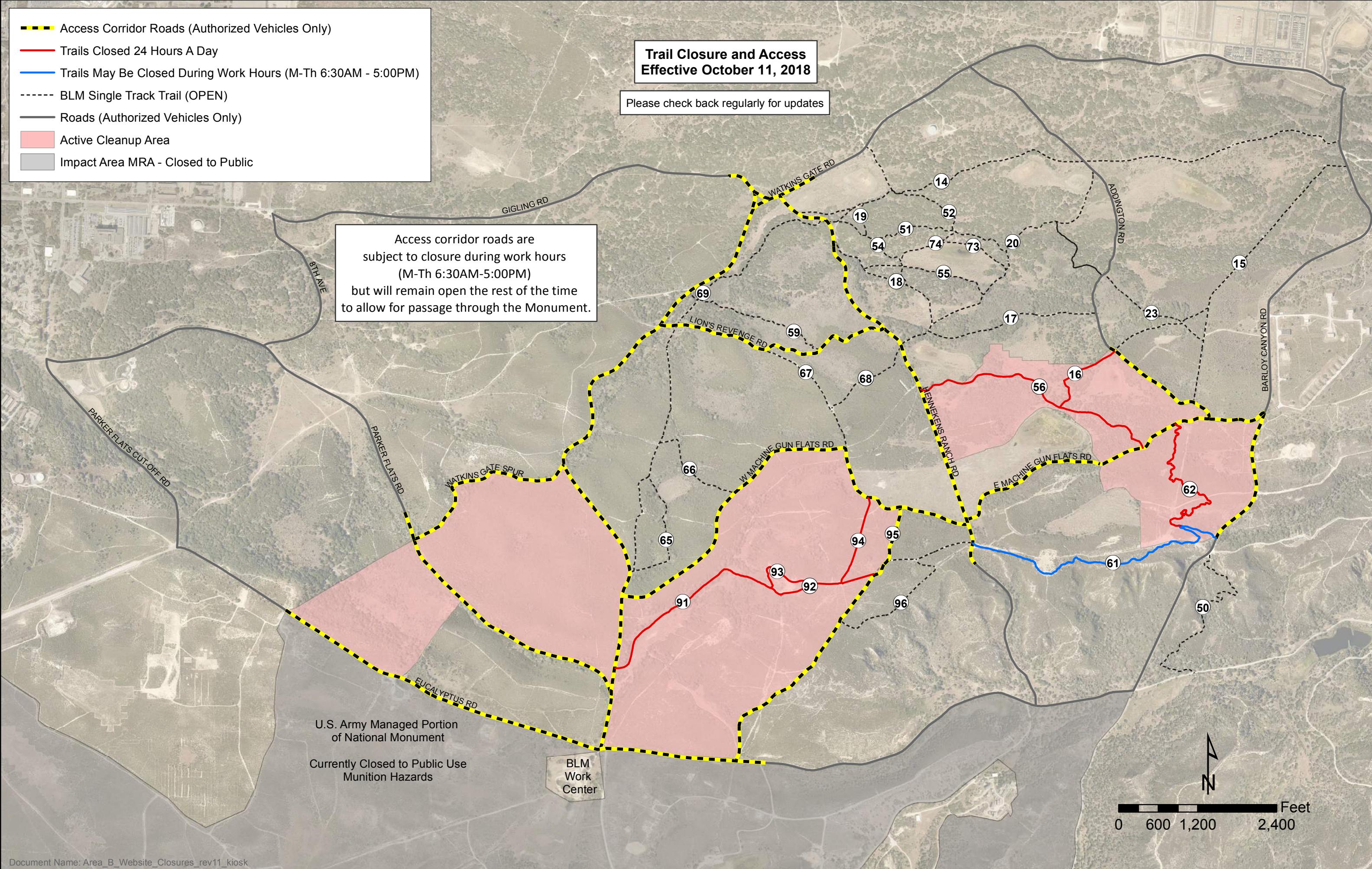
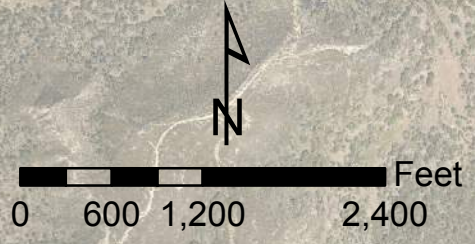
**Trail Closure and Access
Effective October 11, 2018**

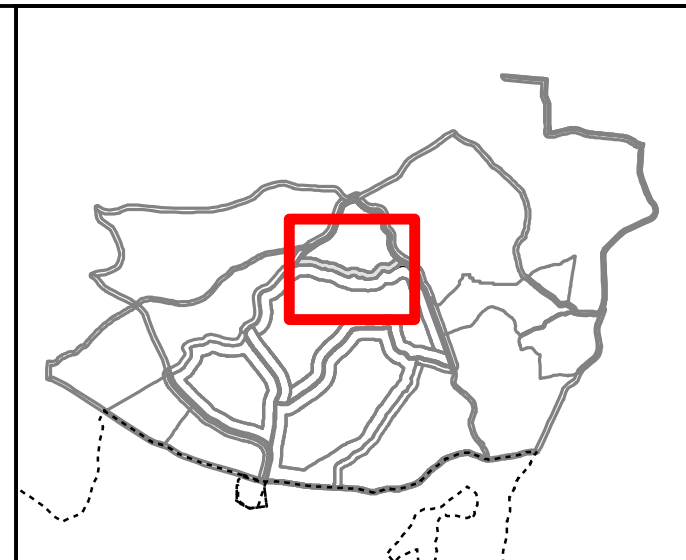
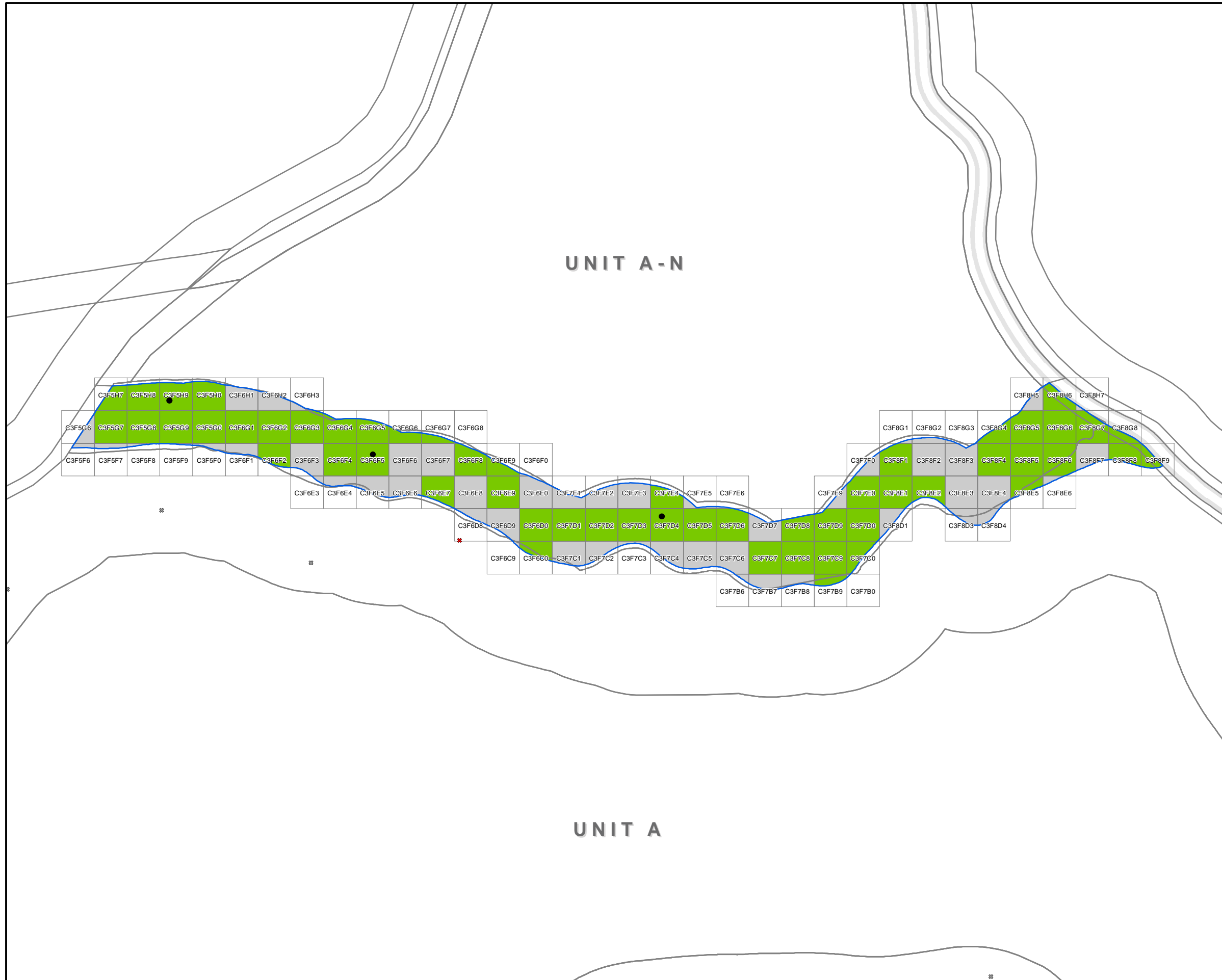
Please check back regularly for updates

Access corridor roads are subject to closure during work hours (M-Th 6:30AM-5:00PM) but will remain open the rest of the time to allow for passage through the Monument.

U.S. Army Managed Portion of National Monument
Currently Closed to Public Use
Munition Hazards

BLM Work Center





Legend

- DMM (CP)
- DMM (LIP)
- ✱ DMM (CP, Destroyed)
- ✱ DMM (LIP, Destroyed)
- MD, LIP
- ✱ Expended (Destroyed)
- ✱ Live (Destroyed)
- MPPEH (CP)
- MPPEH (LIP)
- ✱ UXO (LIP, Destroyed)
- No MD
- < 75 Lbs MD
- 75-250 Lbs MD
- 250-500 Lbs MD
- 500-1000 Lbs MD
- > 1000 Lbs MD
- Fuel Breaks
- ▨ Surface Removal Planned
- Secondary Containment Line

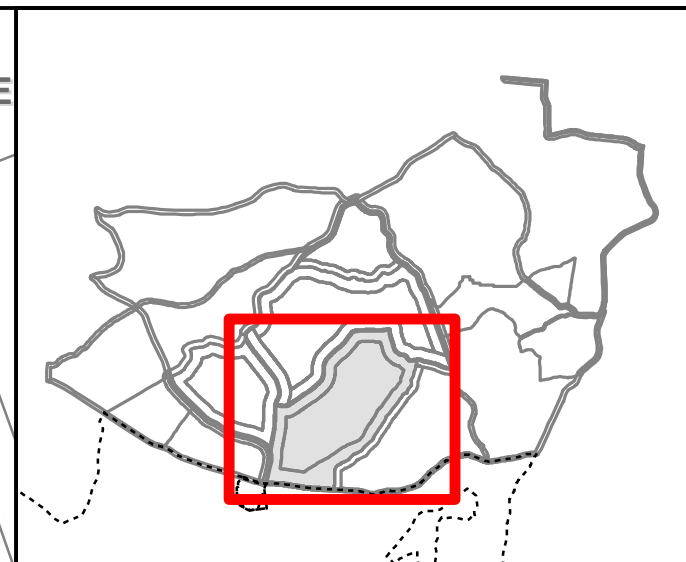
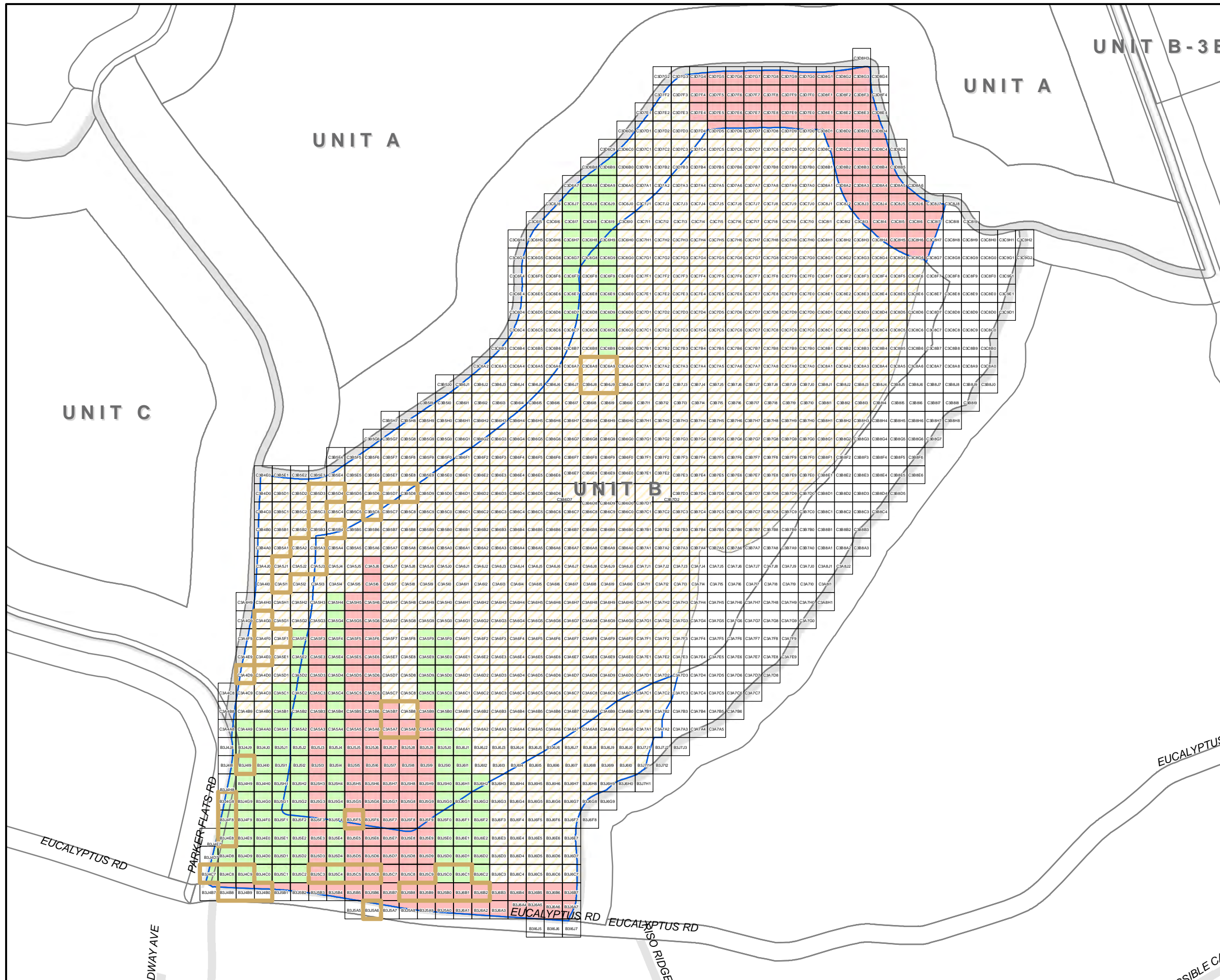
Operations Completed Through: 10/03/2018

N 0 800
Feet


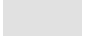


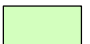



U.S. ARMY CORPS OF ENGINEERS
SACRAMENTO DISTRICT

NAEVA GEOPHYSICS INC.
Seismic Geophysical Services

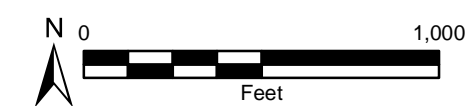
FORMER FORT ORD
Unit A-N MD Denisty



Legend

-  HMP Grids
-  Fuel Breaks
-  Containment Line
-  To Be Surveyed
- DGM Survey Status**
-  Field Collection Complete
-  Data Processing Complete
-  Data QC Complete
-  Data QA Complete

Operations Completed Through: 10/03/2018

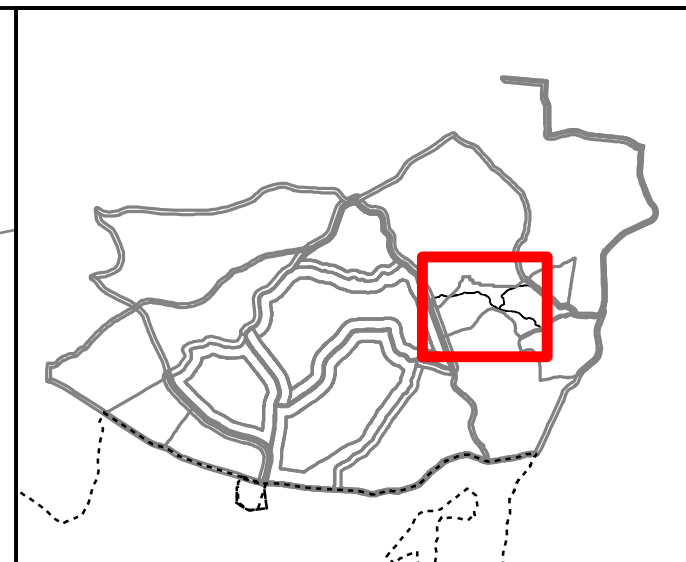
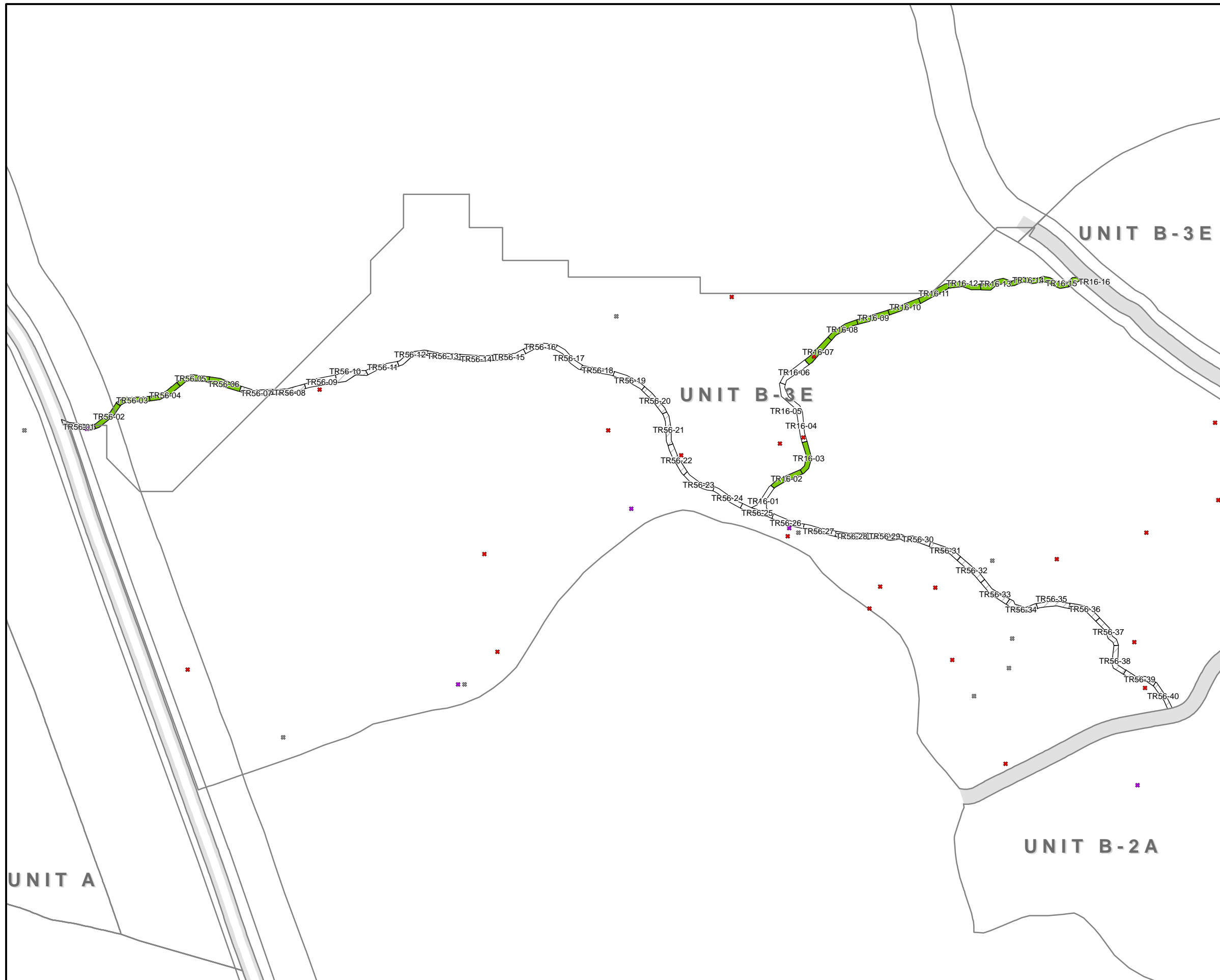


 **U.S. ARMY CORPS OF ENGINEERS**
SACRAMENTO DISTRICT

 **NAEVA GEOPHYSICS INC.**
Subsurface Geophysical Services

FORMER FORT ORD
Unit B DGM Survey Status



Legend

- DMM (CP)
- DMM (LIP)
- ✱ DMM (CP, Destroyed)
- ✱ DMM (LIP, Destroyed)
- MD, LIP
- ✱ Expended (Destroyed)
- ✱ Live (Destroyed)
- MPPEH (CP)
- MPPEH (LIP)
- ✱ UXO (LIP, Destroyed)
- Fuel Breaks
- No MD
- < 75 Lbs MD
- 75-250 Lbs MD
- 250-500 Lbs MD
- 500-1000 Lbs MD
- > 1000 Lbs MD
- M&D Ops Planned

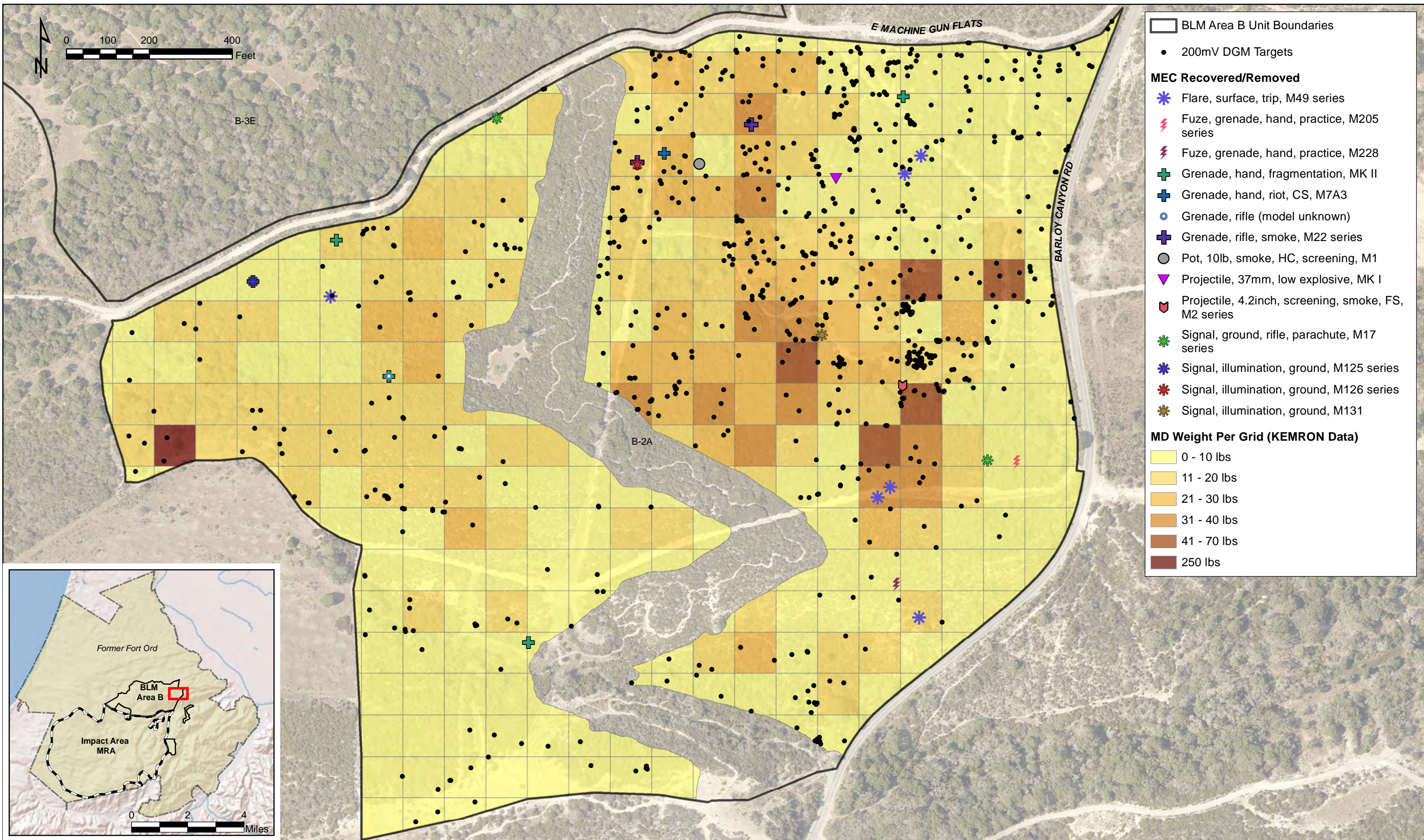
Operations Completed Through: 10/03/2018



**U.S. ARMY CORPS OF ENGINEERS
SACRAMENTO DISTRICT**



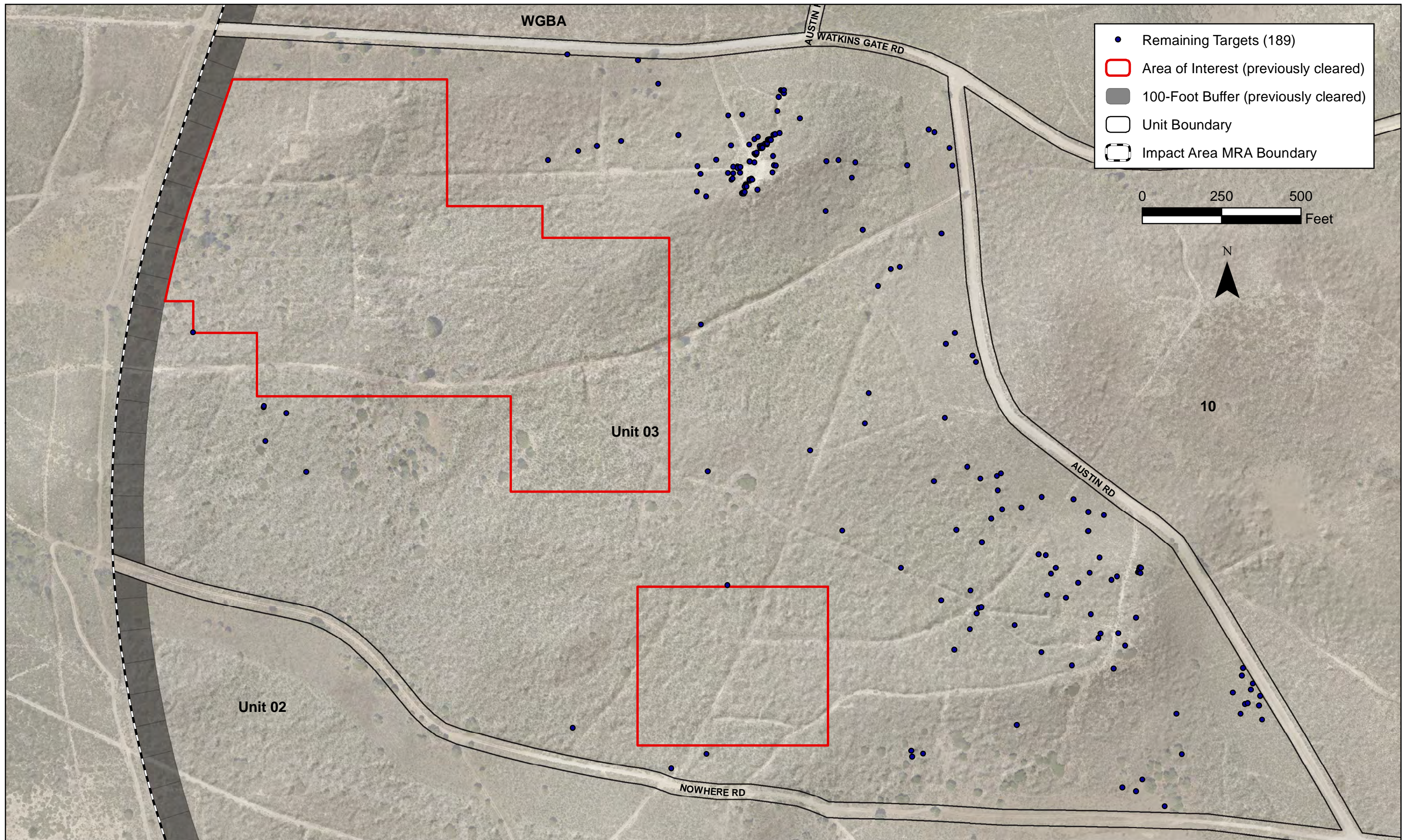
**FORMER FORT ORD
Unit B-3E Trails 56 and 16
Mag and Dig Ops MD Density**



Unit B-2A
BLM Area B
Former Fort Ord, California

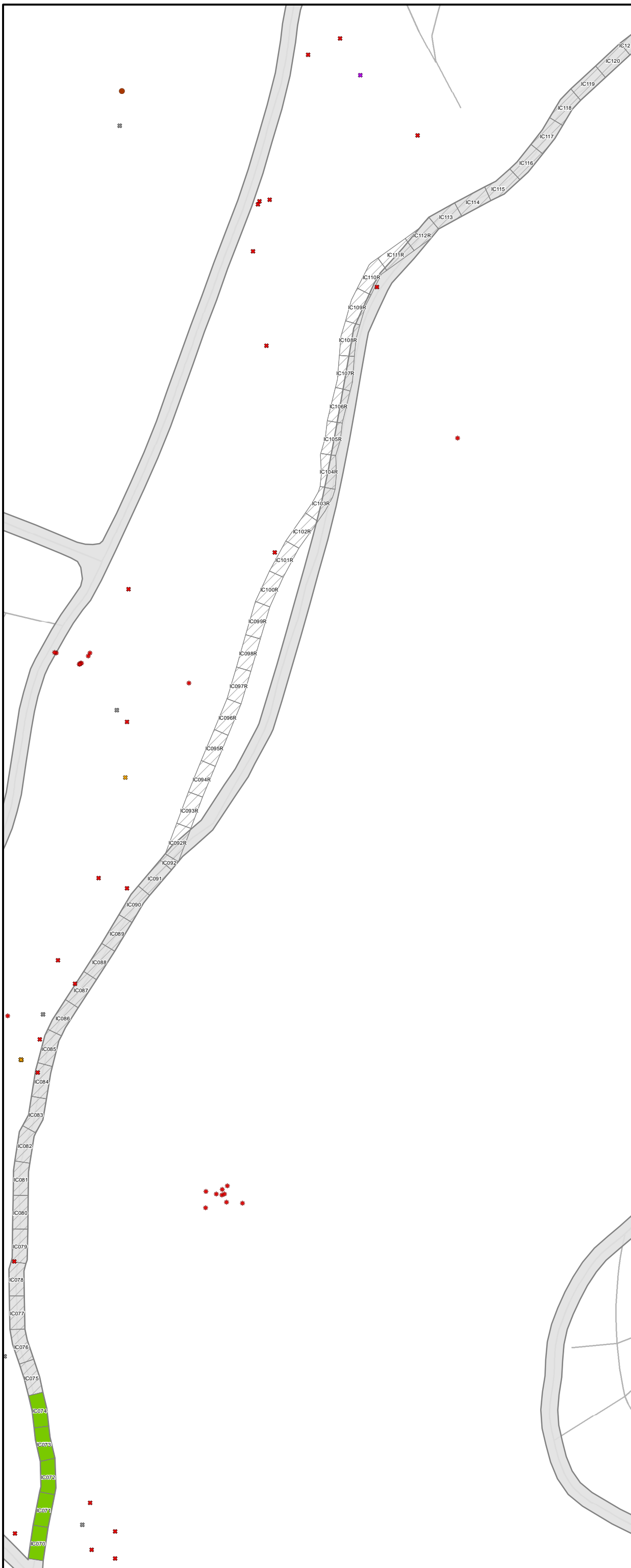
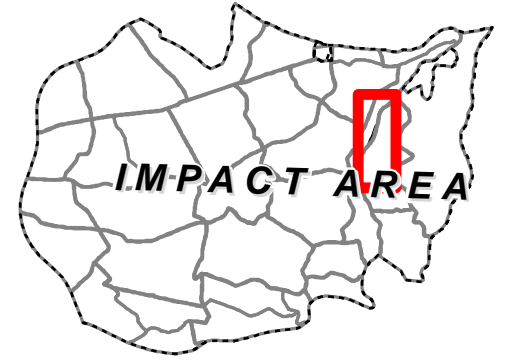
Figure 1
Munitions Debris Weight per Grid,
MEC Items, & DGM Targets







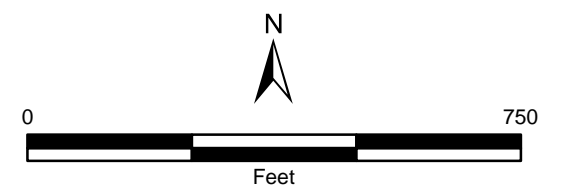
U.S. ARMY CORPS OF ENGINEERS
SACRAMENTO DISTRICT



Legend

- | | | | |
|------------|----------------------|-----------------|-------------------------|
| ● (Purple) | DMM (CP) | ▨ (Hatched) | Fuel Breaks |
| ● (Yellow) | DMM (LIP) | □ (White) | 100x100ft Grids |
| ✱ (Purple) | DMM (CP, Destroyed) | — (Grey) | All Roads |
| ✱ (Yellow) | DMM (LIP, Destroyed) | ▨ (Grey) | No MD |
| ● (Brown) | MD, LIP | ▨ (Light Green) | < 75 Lbs MD |
| ✱ (Grey) | Expended (Destroyed) | ▨ (Yellow) | 75-250 Lbs MD |
| ✱ (Red) | Live (Destroyed) | ▨ (Orange) | 250-500 Lbs MD |
| ● (Black) | MPPEH (CP) | ▨ (Red) | 500-1000 Lbs MD |
| ● (Red) | MPPEH (LIP) | ▨ (Dark Red) | > 1000 Lbs MD |
| ✱ (Red) | UXO (LIP, Destroyed) | ▨ (Hatched) | Surface Removal Planned |

Operations Completed Through: 10/03/2018



FORMER FORT ORD
Impossible Canyon Road Fuel Break
MD Density