

MR Status
Fort Ord MR BCT
14 November 2018

BLM AREA B

Security measures and Outreach

- The website and kiosks were updated with current trail closure information on 10/11.
- Notice and warning signs, trail closure fences, and boundary fences are in place around the ongoing work areas in Units B, C, B-3W, B-3E, and B-2A.
- Boundary fences and trail closure fences were removed from around Unit A pending the prescribed burn.

Digital Geophysical Mapping (DGM)

- DGM in Unit B is in progress.

Subsurface Munitions and Explosives of Concern (MEC) Removal

- Subsurface MEC removal on the 12-ft wide trail footprints is in progress on the following trails:
 - Unit B-3E: Trail 16 and Trail 56
 - Unit B-3E-NE: Trail 57 and Trail 16
 - Unit B-3W: Trail 65
- Subsurface MEC removal on the 12-ft wide trail footprints is being planned on the following trails:
 - Unit B-3E-NE: Trail 15
 - Unit C: Trail 70
- Subsurface MEC removal in the Unit B-3W 100-foot buffer is in progress.
- Intrusive investigation of 69 targets of interest for the Unit B-2A 4.2-inch mortar with unknown filler investigation was completed on 10/15.

IMPACT AREA

FIELD ACTIVITIES

Unit 3 Livens/Stokes Investigation

- Intrusive investigation of the remaining 155 identified anomalies outside of original area of interest in previous Unit 3 Livens/Stokes investigation of potential unknown filler items was completed on 10/17.

Impossible Canyon Road and Wildcat Ridge Road Fuel Break Work

- Surface MEC removal in the fuel break grids for the fuel break and realignment work along Impossible Canyon Road and Wildcat Ridge Road is in progress.
- DGM will proceed following surface MEC removal.

Fuel Breaks QC Digs

- Mowing to support additional verification fieldwork in specific segments of the fuel breaks is complete.
- The Metal Mapper (MM) 2x2 dynamic survey began on 10/22.

Unit 23 Risk Reduction

- Unit 23 Risk Reduction MM 2x2 cued survey of 1,279 targets was completed on 7/25 and a target dig list was finalized.
- Intrusive investigation of the anomalies will begin following completion of higher priority work.

Subsurface MEC Removal and Restoration Activities

- Preliminary site work on the Watkins Gate Burn Area (WGBA) mortar pits restoration project is complete. Restoration/remediation work will begin following the completion of higher priority work.
- Work to remove up to 32 buildings in Impact Area units and Unit B-3W is expected to proceed following resolution of air board permitting issues. This work will include Iron Triangle cleanup and OU2 landfill activities.

Target/Debris Disposal

- No demolition operations were conducted since the last MR BCT.
- MD scrap sorting began on 8/29 and was completed in early September. Additional MD scrap sorting will remain on hold pending additional munitions debris accumulation.

OTHER ACTIVITIES

Vernal Pool Anomaly Investigation

- Following cueing of 1,007 targets with the MM 2x2, 436 targets across approximately 15 ponds were identified for excavation.
- Intrusive investigation of the 436 targets and 0.2 acres of data gap and saturated response areas began on 10/10 and the work was completed on 10/30.
- To protect the ponds' integrity, excavation backfilling was conducted per the approved procedures under field oversight provided by a USACE geologist.

MMRP SITE SECURITY PROGRAM

- Trespass Incident Reports
 - Last 38 days (ending 11/12/2018): 2
 - Year to Date: 9
- Munitions Incident Reports
 - Last 38 days (ending 11/12/2018): 0
 - Year to Date: 8
- Community Education Participants– Year to Date: 265
- Munitions Recognition and Safety Training Participants – Year to Date: 278

- Access Corridor Roads (Authorized Vehicles Only)
- Trails Closed 24 Hours A Day
- Trails May Be Closed During Work Hours (M-Th 6:30AM - 5:00PM)
- BLM Single Track Trail (OPEN)
- Roads (Authorized Vehicles Only)
- Active Cleanup Area
- Impact Area MRA - Closed to Public

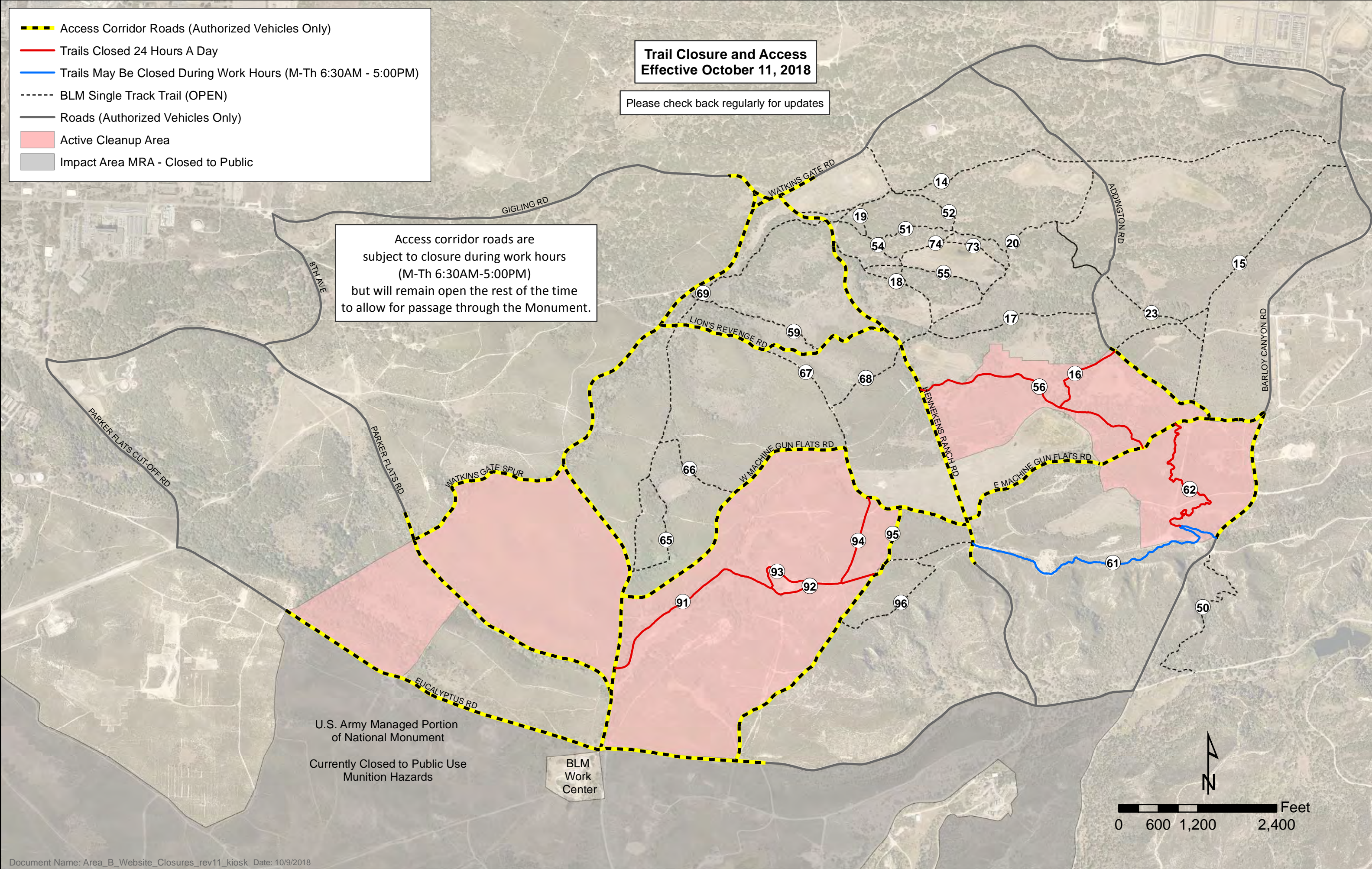
**Trail Closure and Access
Effective October 11, 2018**

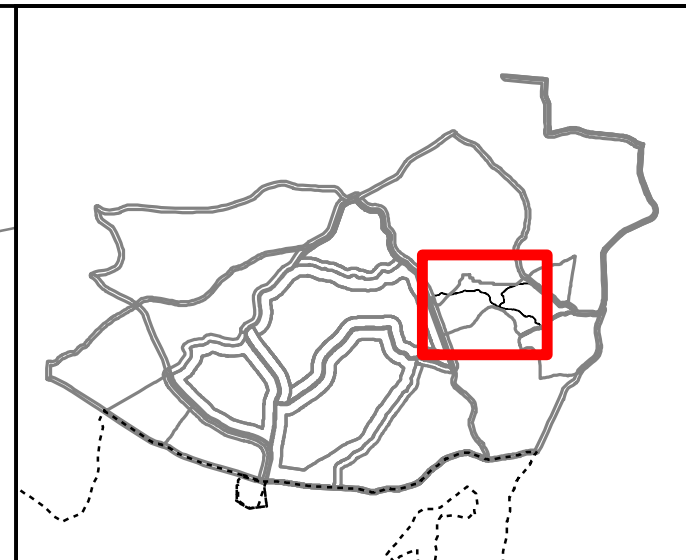
Please check back regularly for updates

Access corridor roads are subject to closure during work hours (M-Th 6:30AM-5:00PM) but will remain open the rest of the time to allow for passage through the Monument.

U.S. Army Managed Portion of National Monument
Currently Closed to Public Use
Munition Hazards

BLM Work Center





Legend

- DMM (CP)
- DMM (LIP)
- ✱ DMM (CP, Destroyed)
- ✱ DMM (LIP, Destroyed)
- MD, LIP
- ✱ Expended (Destroyed)
- ✱ Live (Destroyed)
- MPPEH (CP)
- MPPEH (LIP)
- ✱ UXO (LIP, Destroyed)
- Fuel Breaks
- M&D Ops Planned
- No MD
- < 75 Lbs MD
- 75-250 Lbs MD
- 250-500 Lbs MD
- 500-1000 Lbs MD
- > 1000 Lbs MD

Operations Completed Through: 11/6/2018

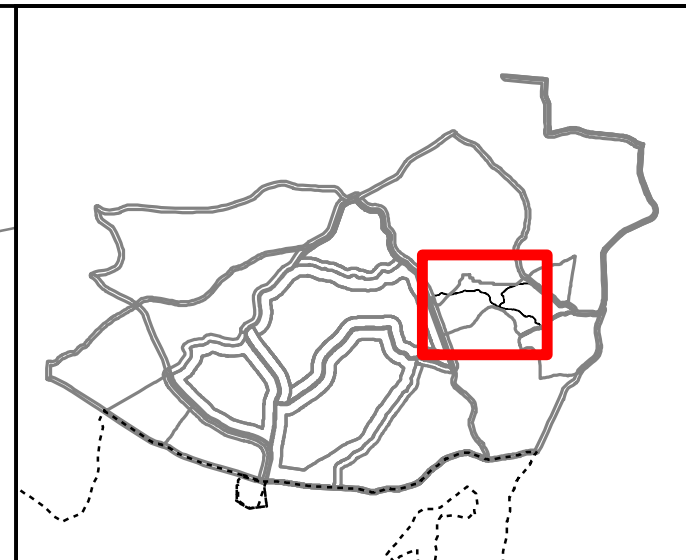
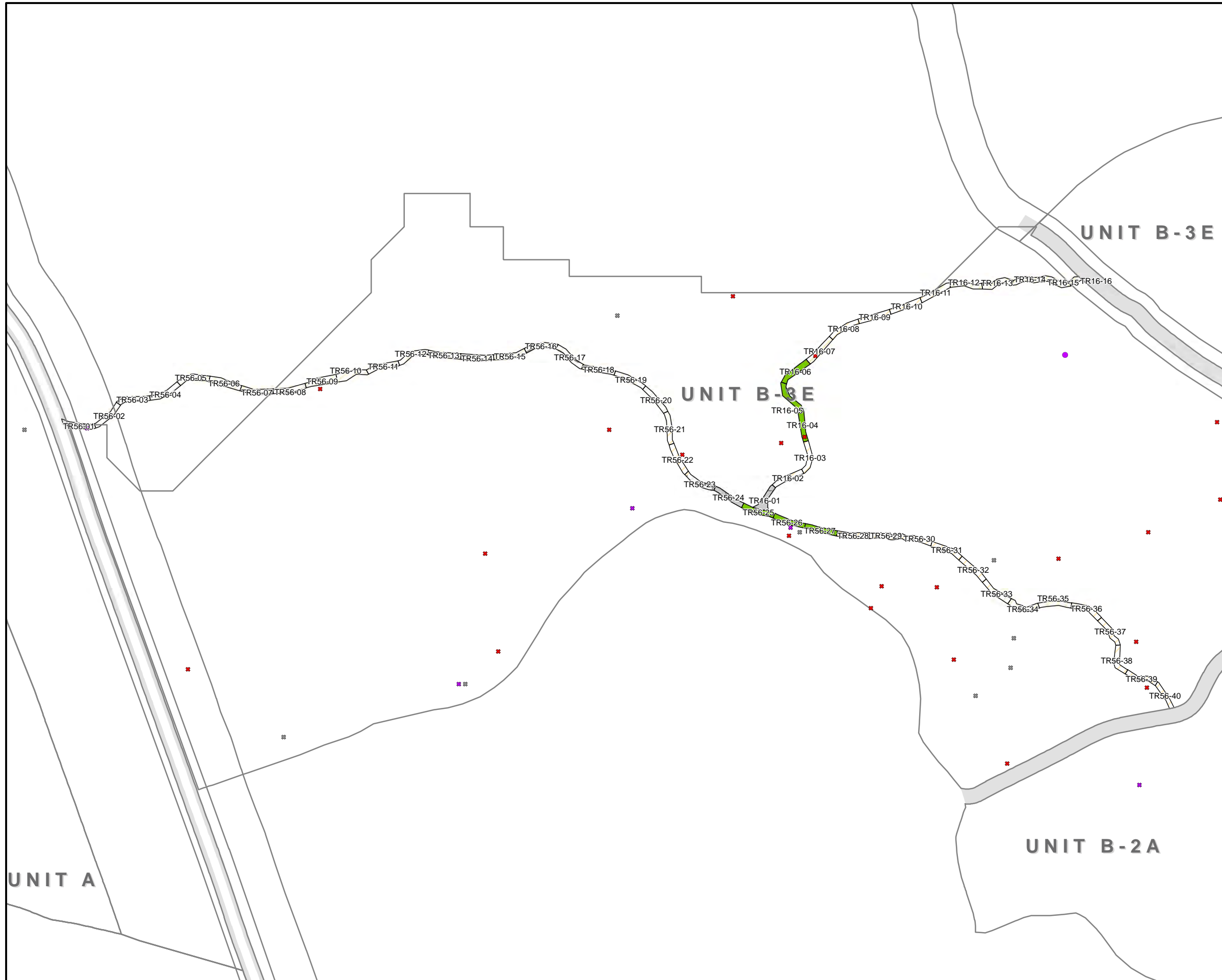


**U.S. ARMY CORPS OF ENGINEERS
SACRAMENTO DISTRICT**

Kemron ENVIRONMENTAL SERVICES **Gilbane**

NAEVA GEOPHYSICS INC.
Subsurface Geophysical Services

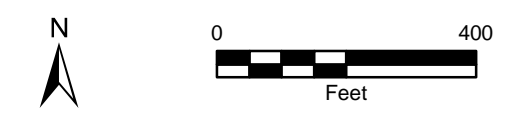
**FORMER FORT ORD
Unit B-3E Trails 56 and 16
Mag and Dig Ops MD Density**



Legend

- DMM (CP)
- DMM (LIP)
- ✱ DMM (CP, Destroyed)
- ✱ DMM (LIP, Destroyed)
- MD, LIP
- ✱ Expended (Destroyed)
- ✱ Live (Destroyed)
- MPPEH (CP)
- MPPEH (LIP)
- ✱ UXO (LIP, Destroyed)
- Fuel Breaks
- DGM Dig Ops Planned
- No MD
- < 75 Lbs MD
- 75-250 Lbs MD
- 250-500 Lbs MD
- 500-1000 Lbs MD
- > 1000 Lbs MD

Operations Completed Through: 11/6/2018

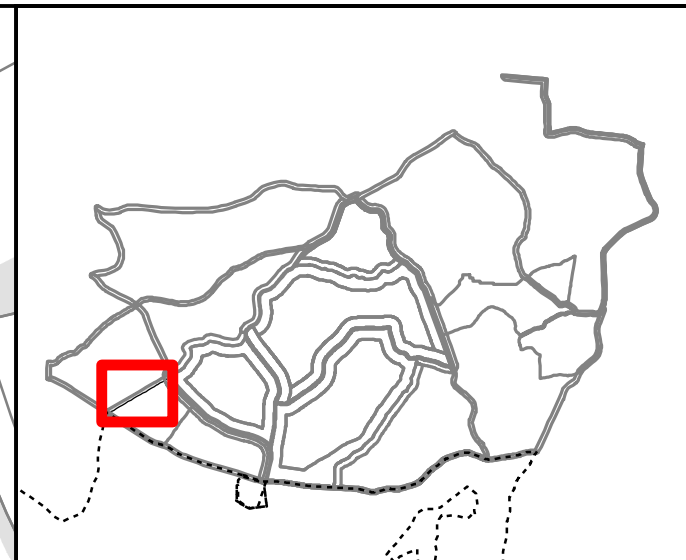
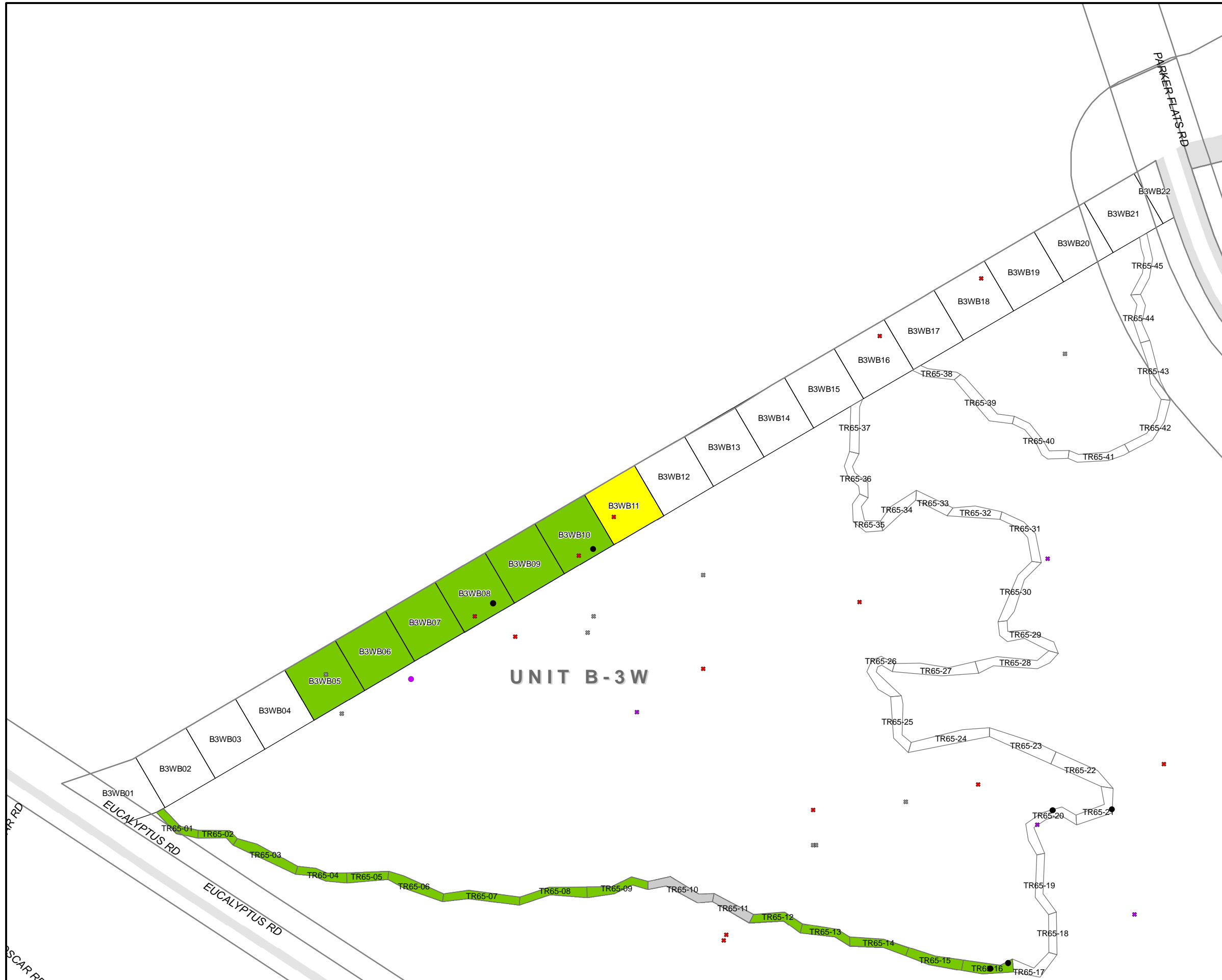


**U.S. ARMY CORPS OF ENGINEERS
SACRAMENTO DISTRICT**

Kemron Environmental Services **Gilbane**

NAEVA GEOPHYSICS INC.
Subsurface Geophysical Services

**FORMER FORT ORD
Unit B-3E Trails 56 and 16
DGM Dig Ops MD Density**



Legend

- | | |
|------------------------|-------------------|
| ● DMM (CP) | ■ Fuel Breaks |
| ● DMM (LIP) | ▨ M&D Ops Planned |
| ✱ DMM (CP, Destroyed) | ■ No MD |
| ✱ DMM (LIP, Destroyed) | ■ < 75 Lbs MD |
| ● MD, LIP | ■ 75-250 Lbs MD |
| ✱ Expended (Destroyed) | ■ 250-500 Lbs MD |
| ✱ Live (Destroyed) | ■ 500-1000 Lbs MD |
| ● MPPEH (CP) | ■ > 1000 Lbs MD |
| ● MPPEH (LIP) | |
| ✱ UXO (LIP, Destroyed) | |

Operations Completed Through: 11/6/2018

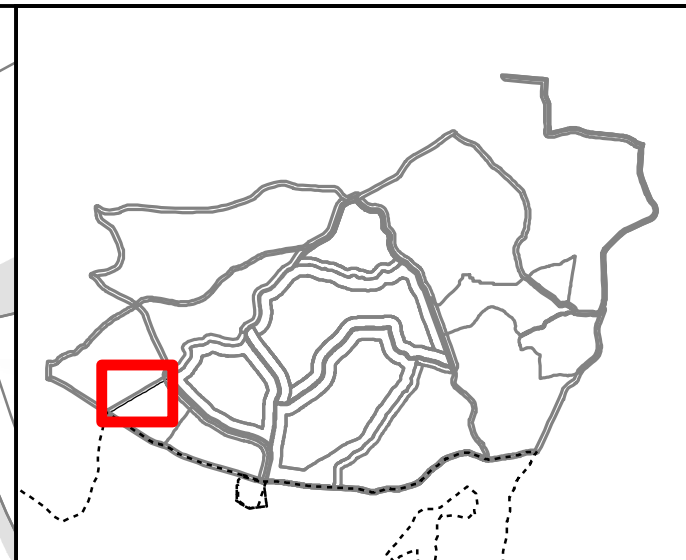
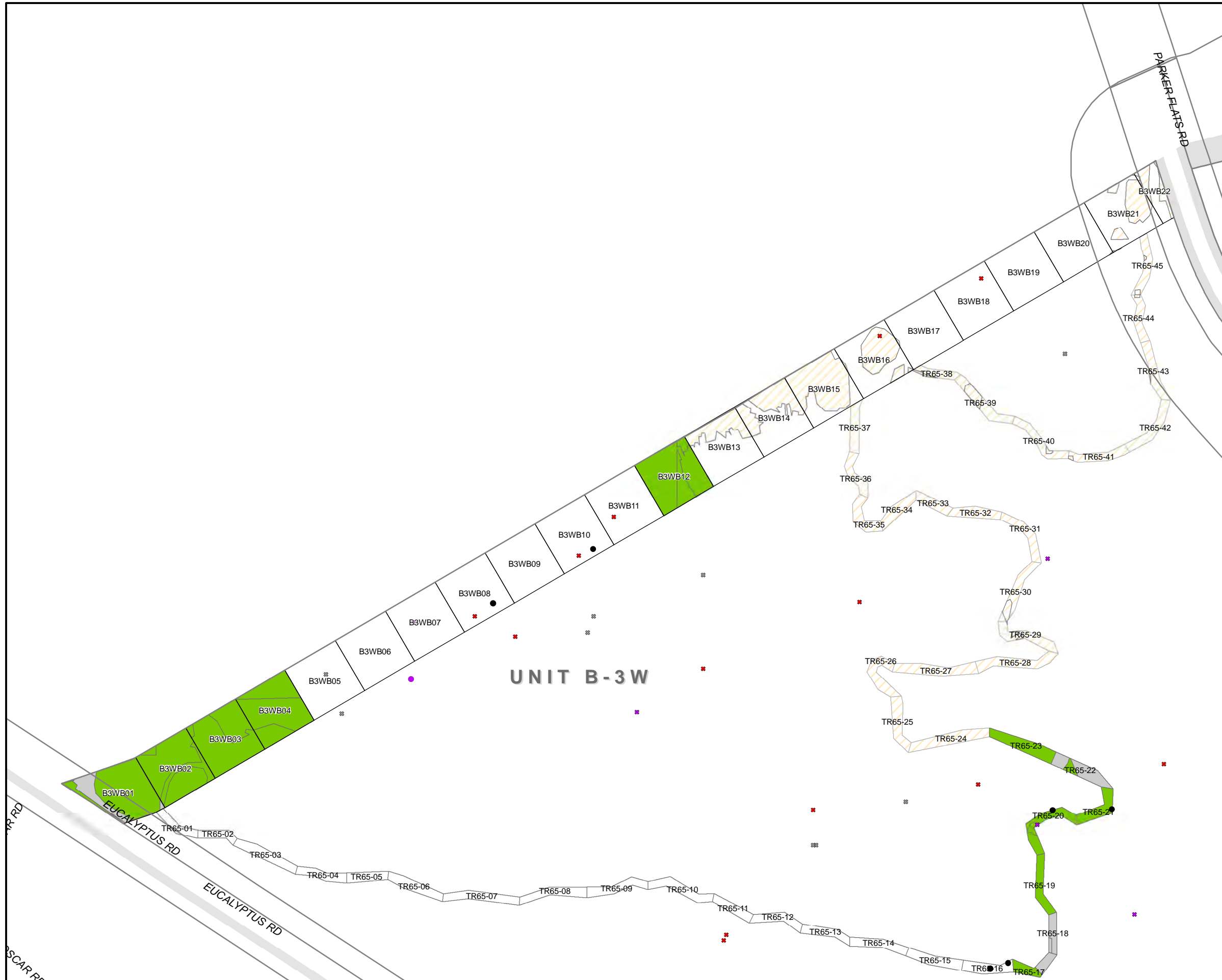


**U.S. ARMY CORPS OF ENGINEERS
SACRAMENTO DISTRICT**

Kemron Environmental Services
Gilbane

NAEVA GEOPHYSICS INC.
Subsurface Geophysical Services

**FORMER FORT ORD
Unit B-3W 100ft Buffer
Mag and Dig Ops MD Density**



Legend

- DMM (CP)
- DMM (LIP)
- ✱ DMM (CP, Destroyed)
- ✱ DMM (LIP, Destroyed)
- MD, LIP
- ✱ Expended (Destroyed)
- ✱ Live (Destroyed)
- MPPEH (CP)
- MPPEH (LIP)
- ✱ UXO (LIP, Destroyed)
- Fuel Breaks
- ▨ DGM Dig Ops Planned
- No MD
- < 75 Lbs MD
- 75-250 Lbs MD
- 250-500 Lbs MD
- 500-1000 Lbs MD
- > 1000 Lbs MD

Operations Completed Through: 11/6/2018

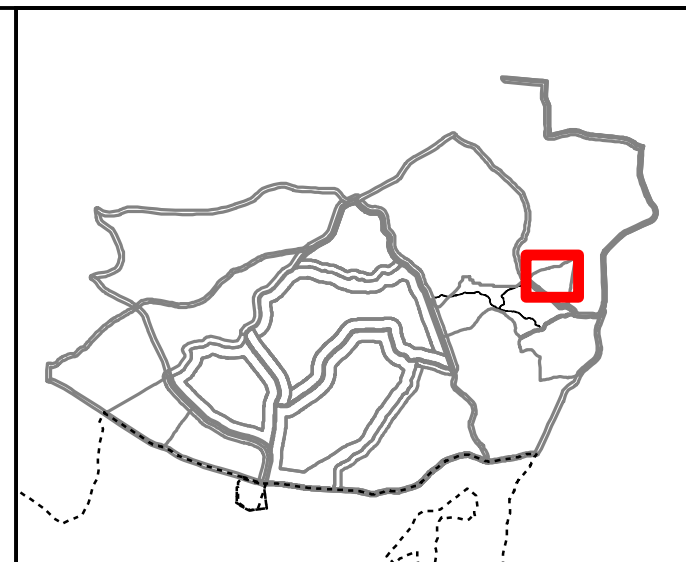
N

0 400
Feet

U.S. ARMY CORPS OF ENGINEERS
SACRAMENTO DISTRICT

NAEVA GEOPHYSICS INC.
Subsurface Geophysical Services

FORMER FORT ORD
Unit B-3W 100ft Buffer
DGM Dig Ops MD Density



Legend

- DMM (CP)
- DMM (LIP)
- ✱ DMM (CP, Destroyed)
- ✱ DMM (LIP, Destroyed)
- MD, LIP
- ✱ Expended (Destroyed)
- ✱ Live (Destroyed)
- MPPEH (CP)
- MPPEH (LIP)
- ✱ UXO (LIP, Destroyed)
- Fuel Breaks
- ▨ DGM Dig Ops Planned
- No MD
- < 75 Lbs MD
- 75-250 Lbs MD
- 250-500 Lbs MD
- 500-1000 Lbs MD
- > 1000 Lbs MD

Operations Completed Through: 11/6/2018

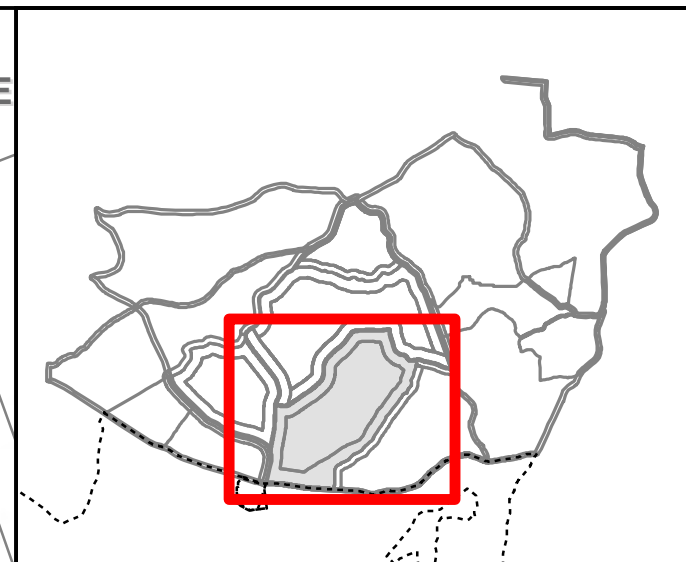
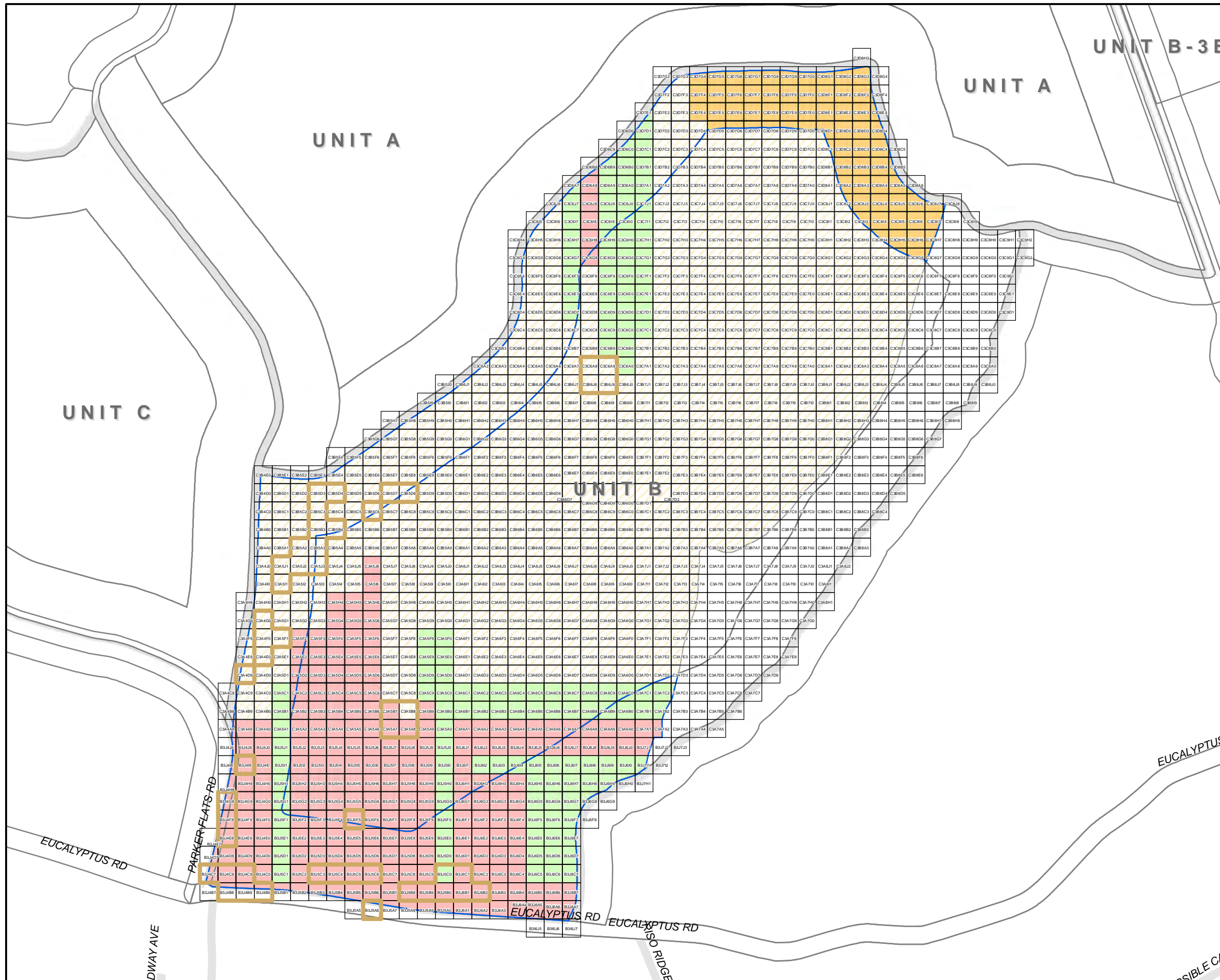


 **U.S. ARMY CORPS OF ENGINEERS
SACRAMENTO DISTRICT**

KEMRON ENVIRONMENTAL SERVICES **Gilbane**

NAEVA GEOPHYSICS INC.
Subsurface Geophysical Services

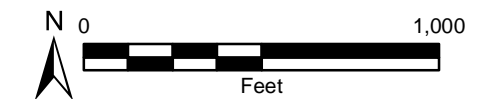
**FORMER FORT ORD
Unit B-3E-NE Trails 16 and 57
DGM Dig Ops MD Density**



Legend

- HMP Grids
- Fuel Breaks
- Containment Line
- DGM Survey Status**
- To Be Surveyed
- Field Collection Complete
- Data Processing Complete
- Data QC Complete
- Data QA Complete

Operations Completed Through: 11/6/2018



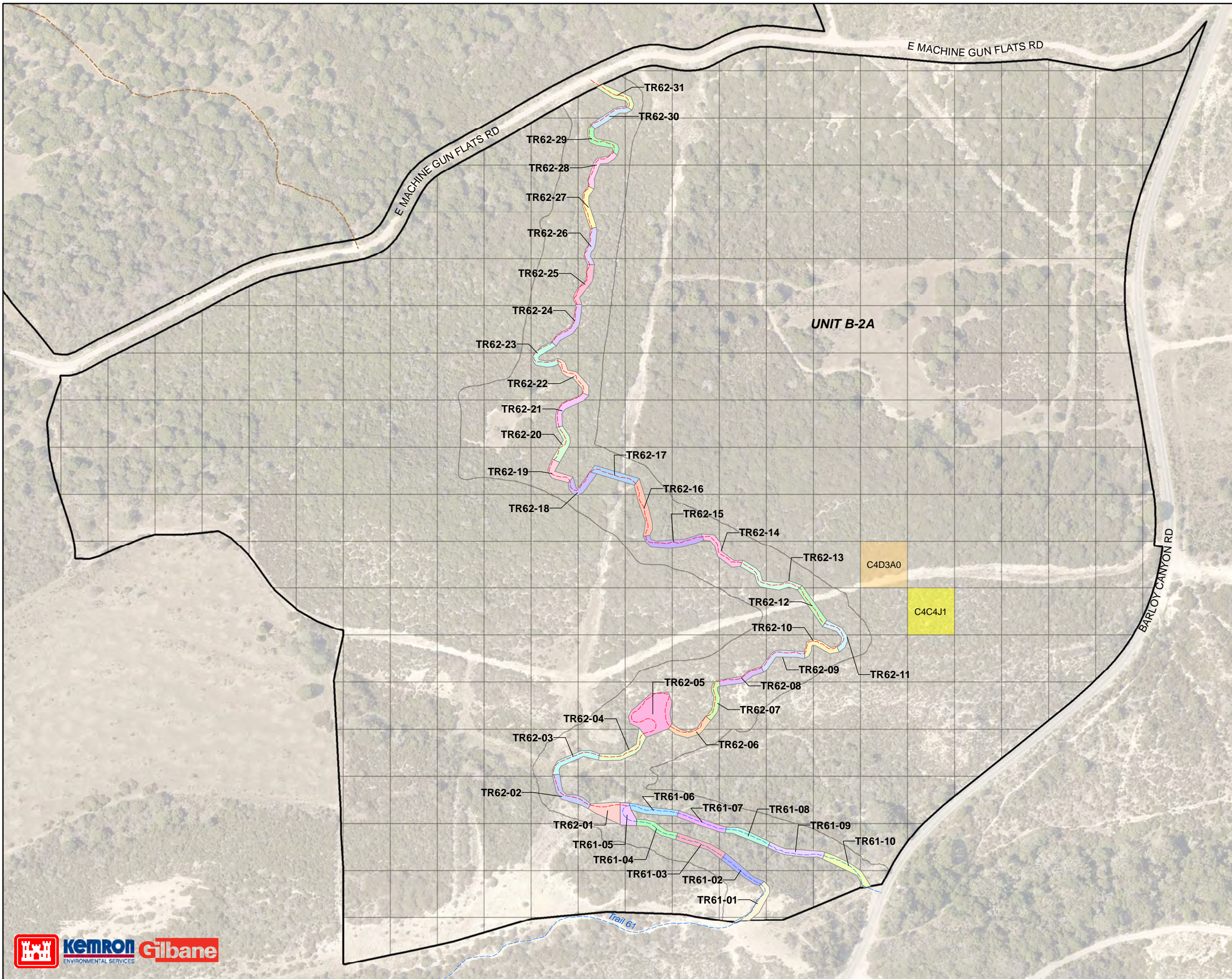
U.S. ARMY CORPS OF ENGINEERS
SACRAMENTO DISTRICT

Kemron
ENVIRONMENTAL SERVICES

Gilbane

NAEVA GEOPHYSICS INC.
Subsurface Geophysical Services

FORMER FORT ORD
Unit B DGM Survey Status

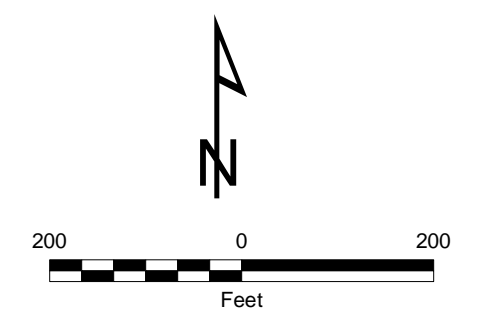


Legend

B2A_work_grids_Split

vchGridID

- Grid
- C4C4J1
- C4D3A0



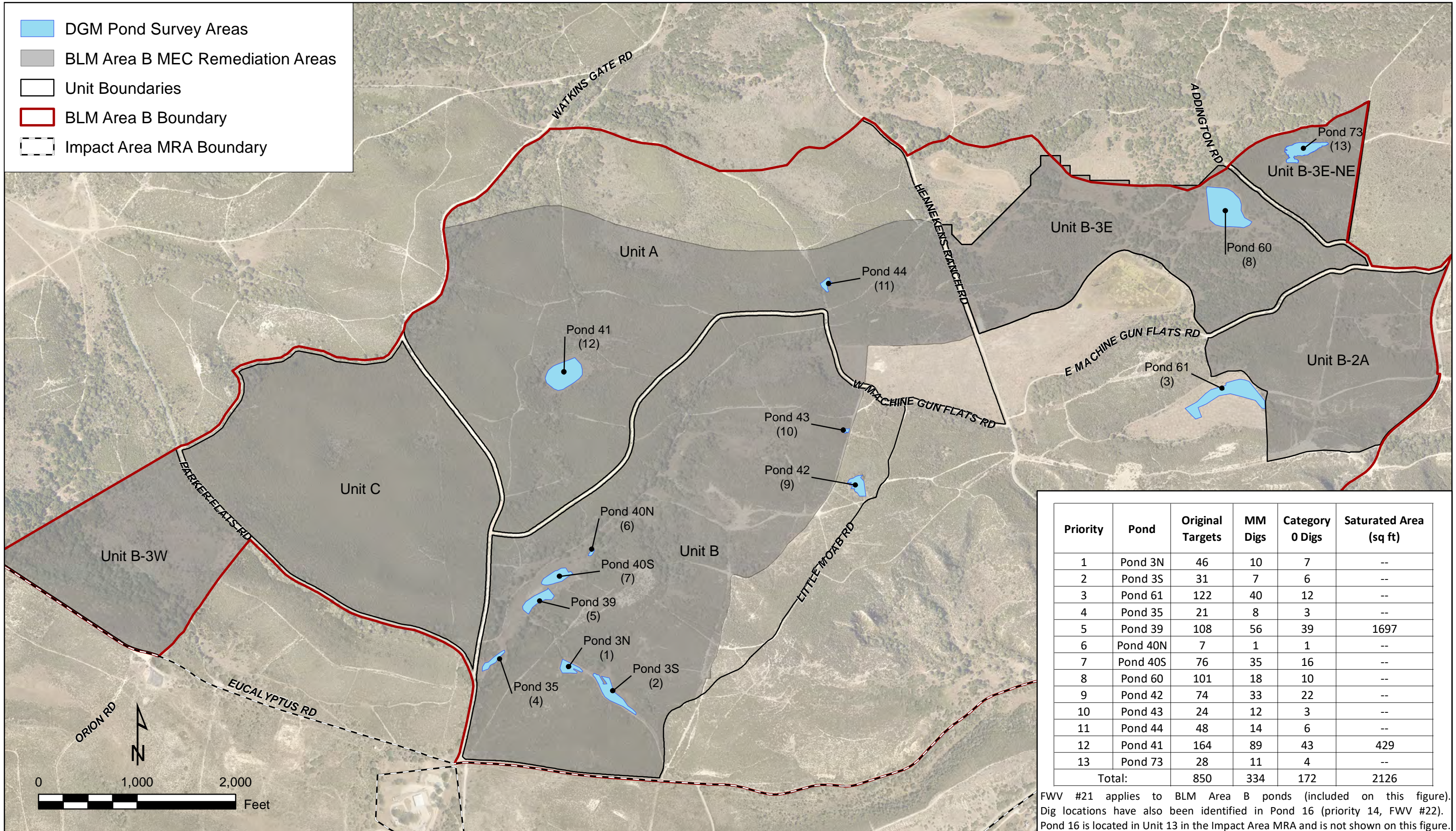
DRAFT

BLM Area B
Unit B-2A
Trails 61/ 62





- DGM Pond Survey Areas
- BLM Area B MEC Remediation Areas
- Unit Boundaries
- BLM Area B Boundary
- Impact Area MRA Boundary



Priority	Pond	Original Targets	MM Digs	Category 0 Digs	Saturated Area (sq ft)
1	Pond 3N	46	10	7	--
2	Pond 3S	31	7	6	--
3	Pond 61	122	40	12	--
4	Pond 35	21	8	3	--
5	Pond 39	108	56	39	1697
6	Pond 40N	7	1	1	--
7	Pond 40S	76	35	16	--
8	Pond 60	101	18	10	--
9	Pond 42	74	33	22	--
10	Pond 43	24	12	3	--
11	Pond 44	48	14	6	--
12	Pond 41	164	89	43	429
13	Pond 73	28	11	4	--
Total:		850	334	172	2126

FWV #21 applies to BLM Area B ponds (included on this figure). Dig locations have also been identified in Pond 16 (priority 14, FWV #22). Pond 16 is located in Unit 13 in the Impact Area MRA and is not shown on this figure.



**BLM Area B
Pond DGM Survey Areas
Former Fort Ord, California**

**Figure 1
Location Map**