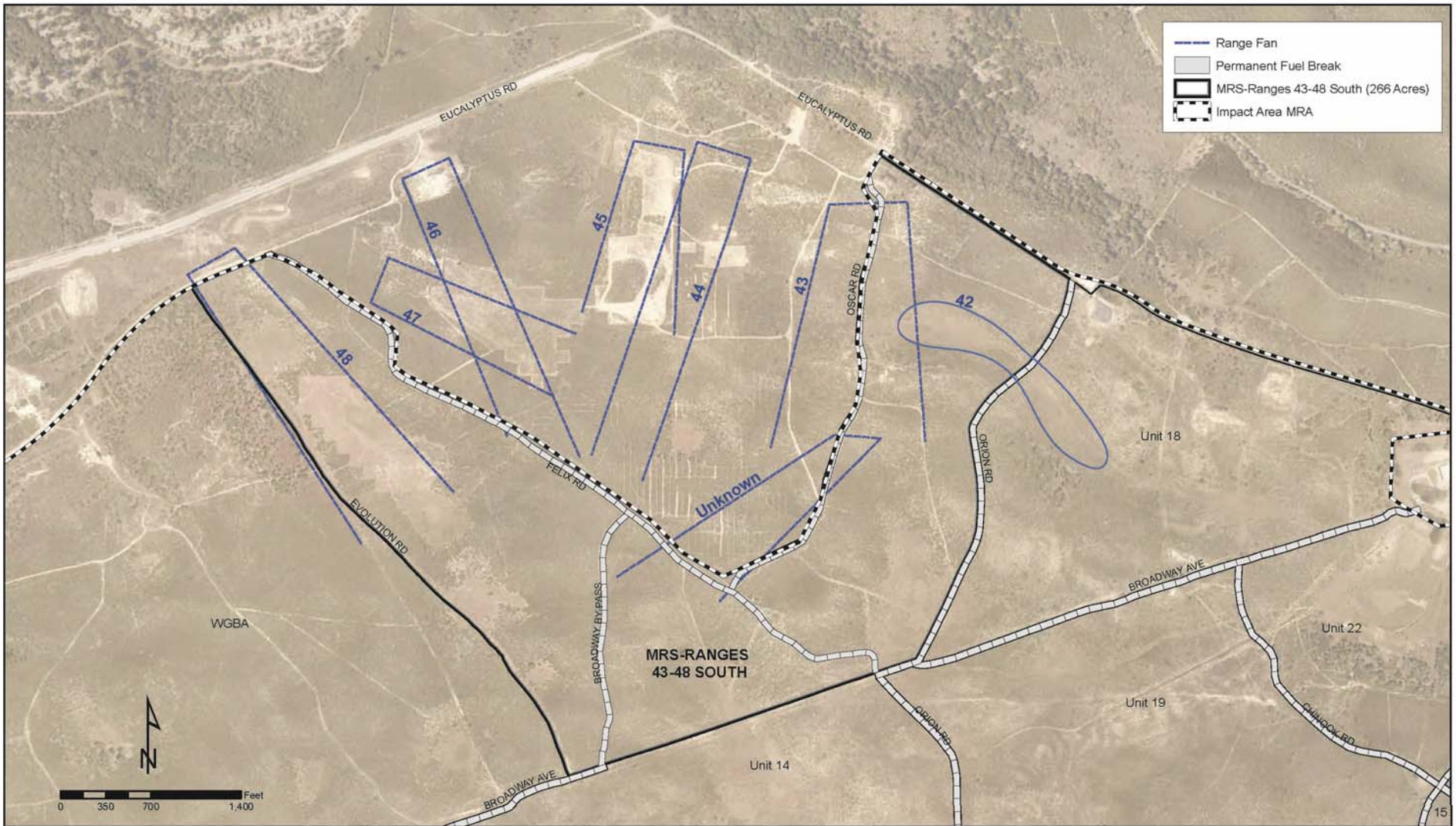


# Range 48 Near-Surface MEC Removal and DGM Survey

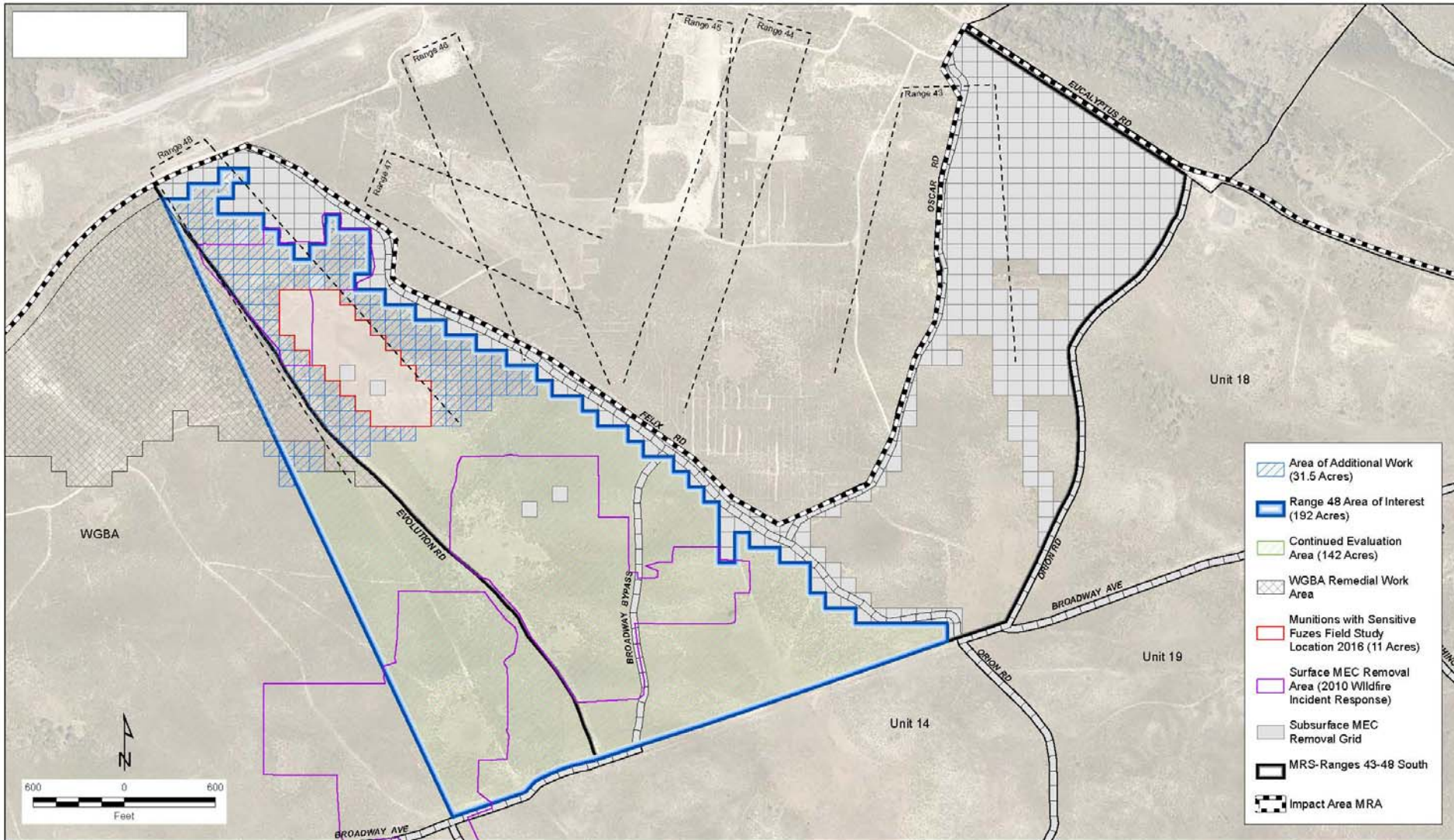
January 9, 2019



Technical Memorandum  
 MRS-Ranges 43-48 South  
 Munitions and Explosives of Concern (MEC) Removal  
 Impact Area MRA  
 Former Fort Ord, California

Figure 1  
 MRS-Ranges 43-48 South  
 Site Overview





- Area of Additional Work (31.5 Acres)
- Range 48 Area of Interest (192 Acres)
- Continued Evaluation Area (142 Acres)
- WGBA Remedial Work Area
- Munitions with Sensitive Fuzes Field Study Location 2016 (11 Acres)
- Surface MEC Removal Area (2010 Wildfire Incident Response)
- Subsurface MEC Removal Grid
- MRS-Ranges 43-48 South
- Impact Area MRA

Field Work Variance #024  
 MRS-Ranges 43-48 South  
 Munitions and Explosives of Concern (MEC) Removal  
 Impact Area MRA  
 Former Fort Ord, California

Figure 2  
 Area of Additional Work  
 in Range 48 (Area of Interest)



# Range 48 Background and Planned MEC Remediation Work

## Area description

- Range 48 approximately 192 acres
- Mix of grasslands, oak woodlands, and chaparral
- Heavily used for training and exhibition activities when Fort Ord was active
- Many high explosive and practice MEC items removed following Ranges 43-48 prescribed burn Oct 2003

## Background

- In 2016, approximately 11 acres of vegetation cleared in order to conduct field study regarding detection and removal of munitions with sensitive fuzes
- 111 MEC items encountered and removed from the ground surface and near-surface (depth of six inches) within the 11 acres
- Determination by the Army to conduct near-surface removal in northern portion of Range 48 (approximately 32 acres)
  - Intended to address potential hazard of surface MEC for BLM and other personnel who may need to access the area

## Planned MEC Remediation

- Vegetation Clearance – Started on 1/7/2019 and will be completed prior to 2/1/2019 due to presence of HMP species
- Near-Surface MEC Removal – Will occur after 6/1/2019 due to presence of HMP species
- DGM Survey – Will occur after near-surface MEC removal