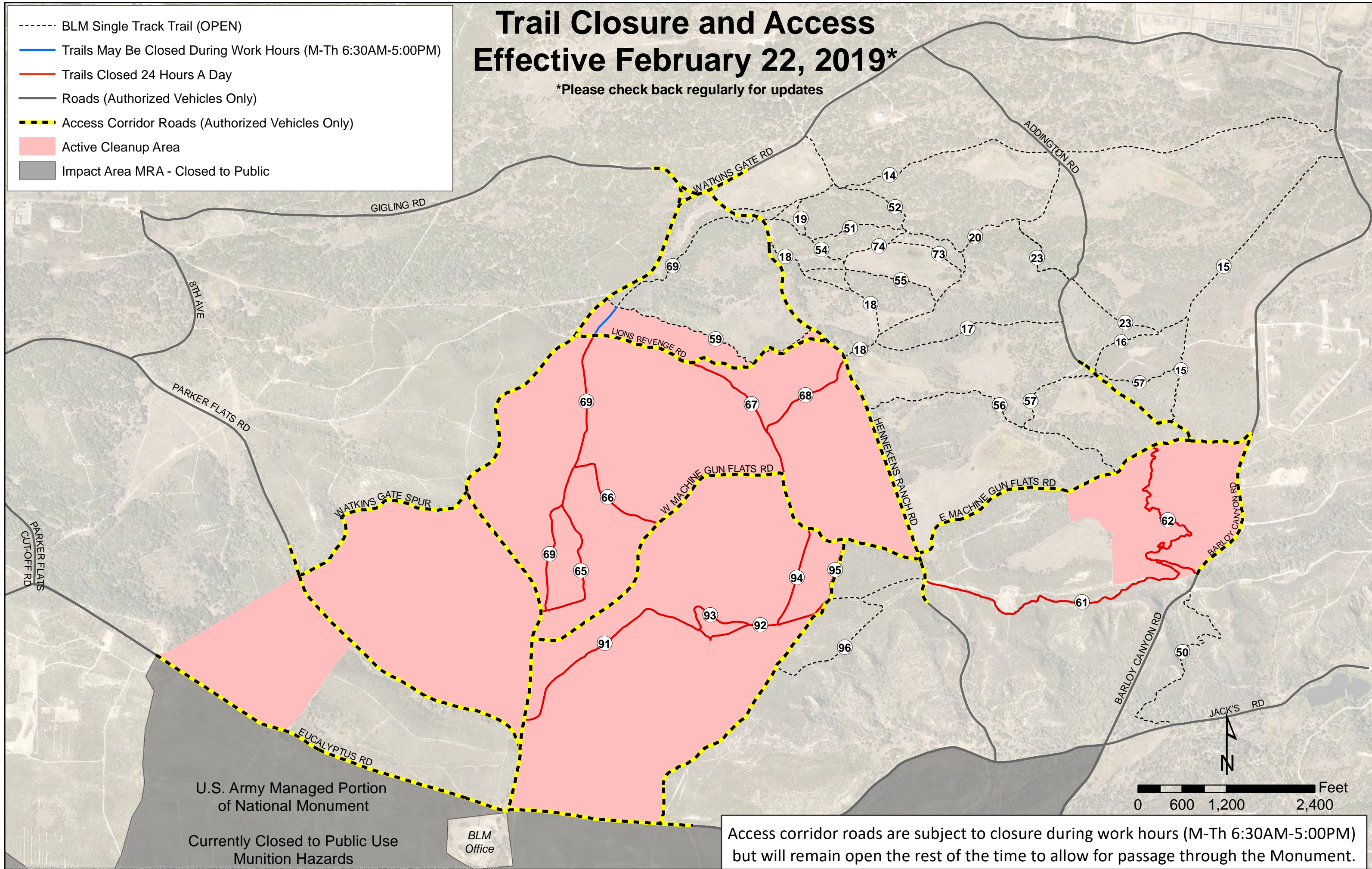


Trail Closure and Access Effective February 22, 2019*

*Please check back regularly for updates

- BLM Single Track Trail (OPEN)
- Trails May Be Closed During Work Hours (M-Th 6:30AM-5:00PM)
- Trails Closed 24 Hours A Day
- Roads (Authorized Vehicles Only)
- Access Corridor Roads (Authorized Vehicles Only)
- Active Cleanup Area
- Impact Area MRA - Closed to Public



U.S. Army Managed Portion
of National Monument

Currently Closed to Public Use
Munition Hazards

BLM
Office

Access corridor roads are subject to closure during work hours (M-Th 6:30AM-5:00PM)
but will remain open the rest of the time to allow for passage through the Monument.