

MRS-BLM Ranges 43-48 South
Technical Memorandum
BCT Presentation

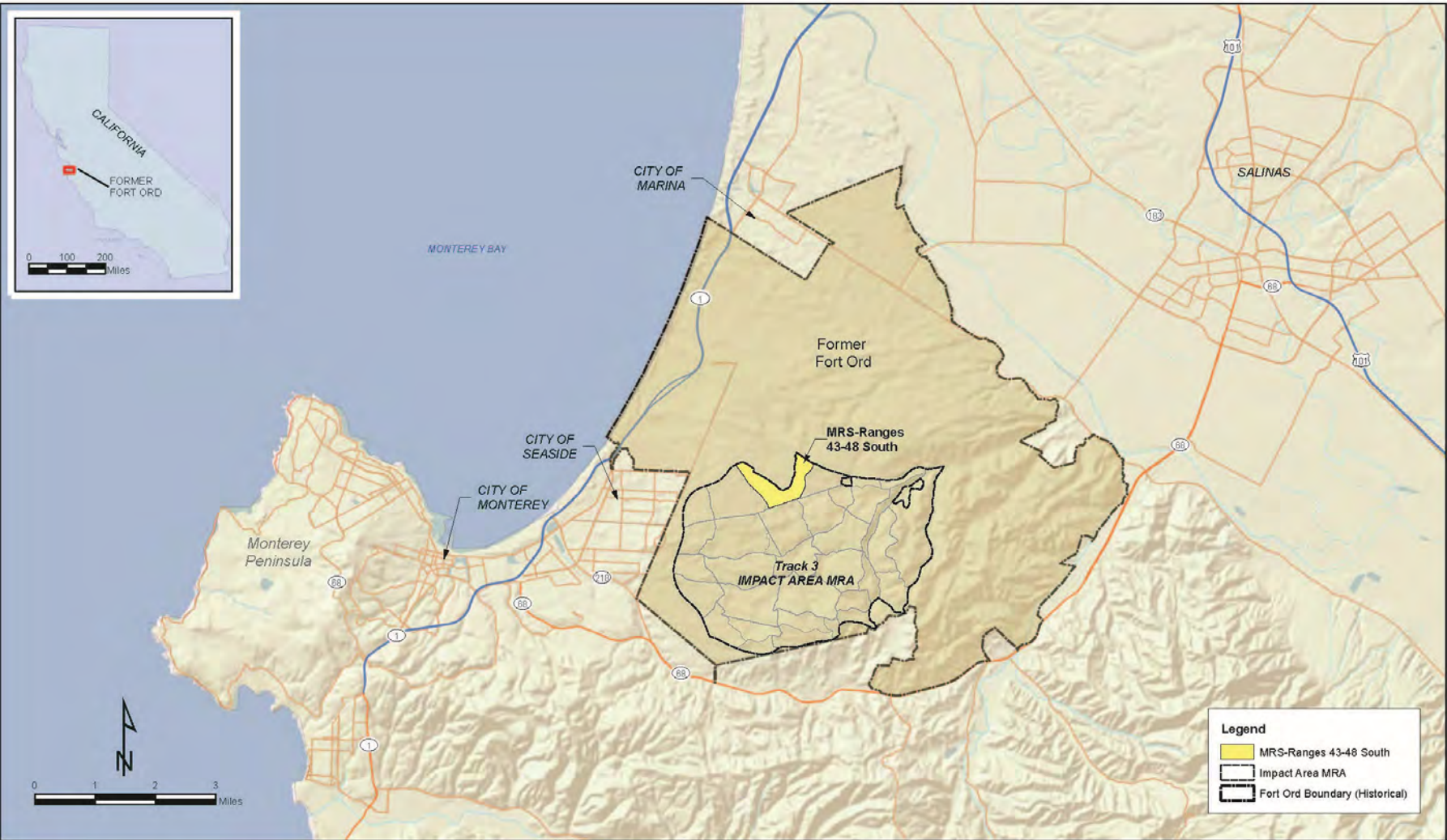
March 14, 2019

Technical Memorandum Overview

- Multiple MEC investigations and removals have occurred at Ranges 43-48 South.
- Removal conducted was primarily surface with some limited subsurface.
- Evaluation conducted in TM includes a portion of WGBA associated with Range 48.
- Conduct of a near-surface removal in 2016 in Range 48 to support Munitions with Sensitive Fuzes Field Study (MSSFS) resulted in discovery of MEC items on ground surface where surface MEC removal was previously conducted.

Technical Memorandum Recommendations

- Conduct vegetation clearance and near-surface (depth of six inches) MEC removal in the northern portion of the Range 48 fan (this phase of work has started).
- Consider DGM survey in portions of the site where additional MEC removal is conducted with vegetation clearance.
- Range 48 fan area should be evaluated along with other "candidate areas" for possible subsurface removal following completion of MSFFS.



Technical Memorandum
 MEC Remedial Action
 Track 3 Impact Area MRA
 MRS-Ranges 43-48 South
 Former Fort Ord, California

Legend
 MRS-Ranges 43-48 South
 Impact Area MRA
 Fort Ord Boundary (Historical)

Figure 1
 Track 3 Impact Area MRA
 Regional Location Map

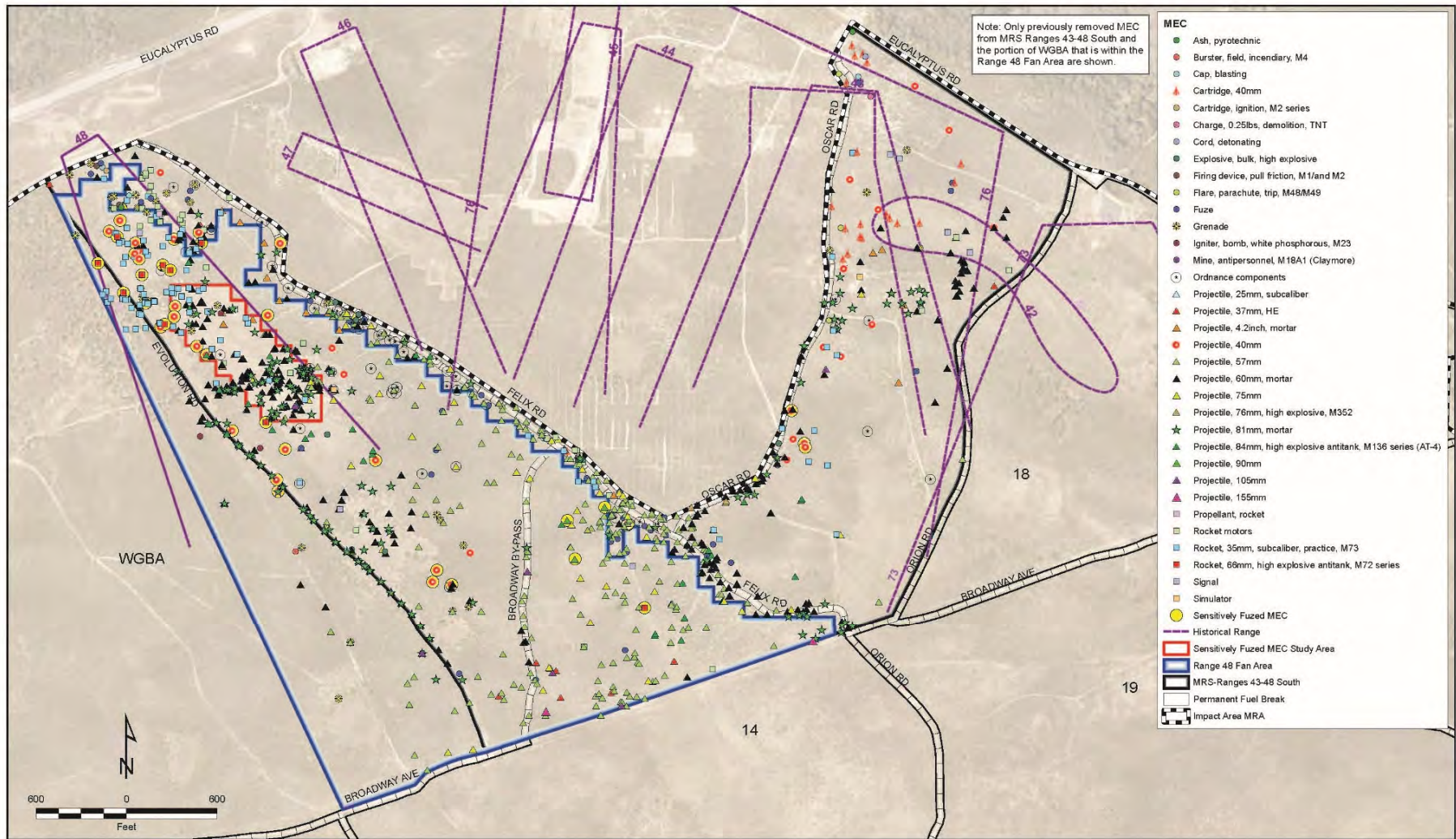
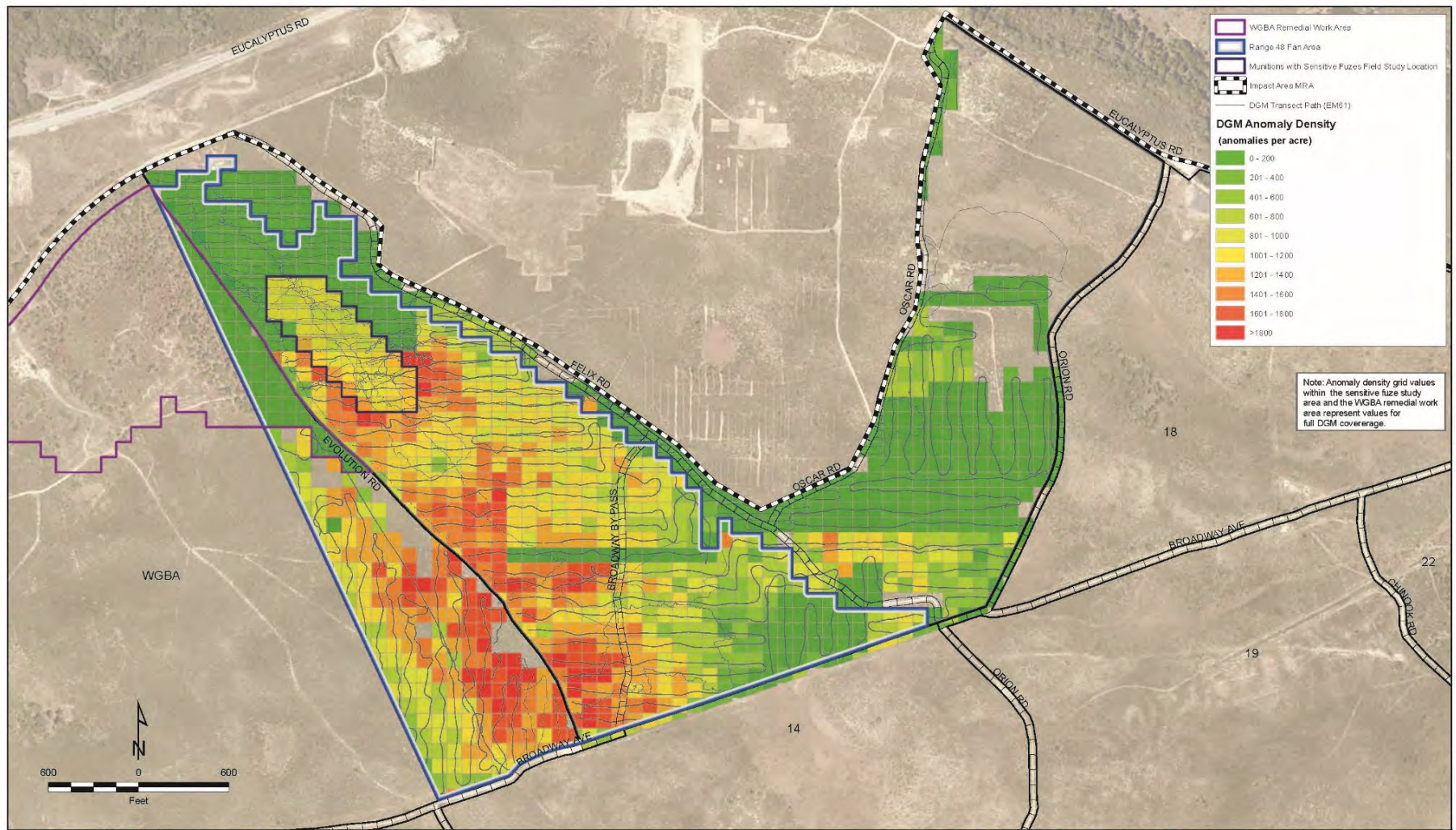


Figure 6

Locations of MEC Removed to Date

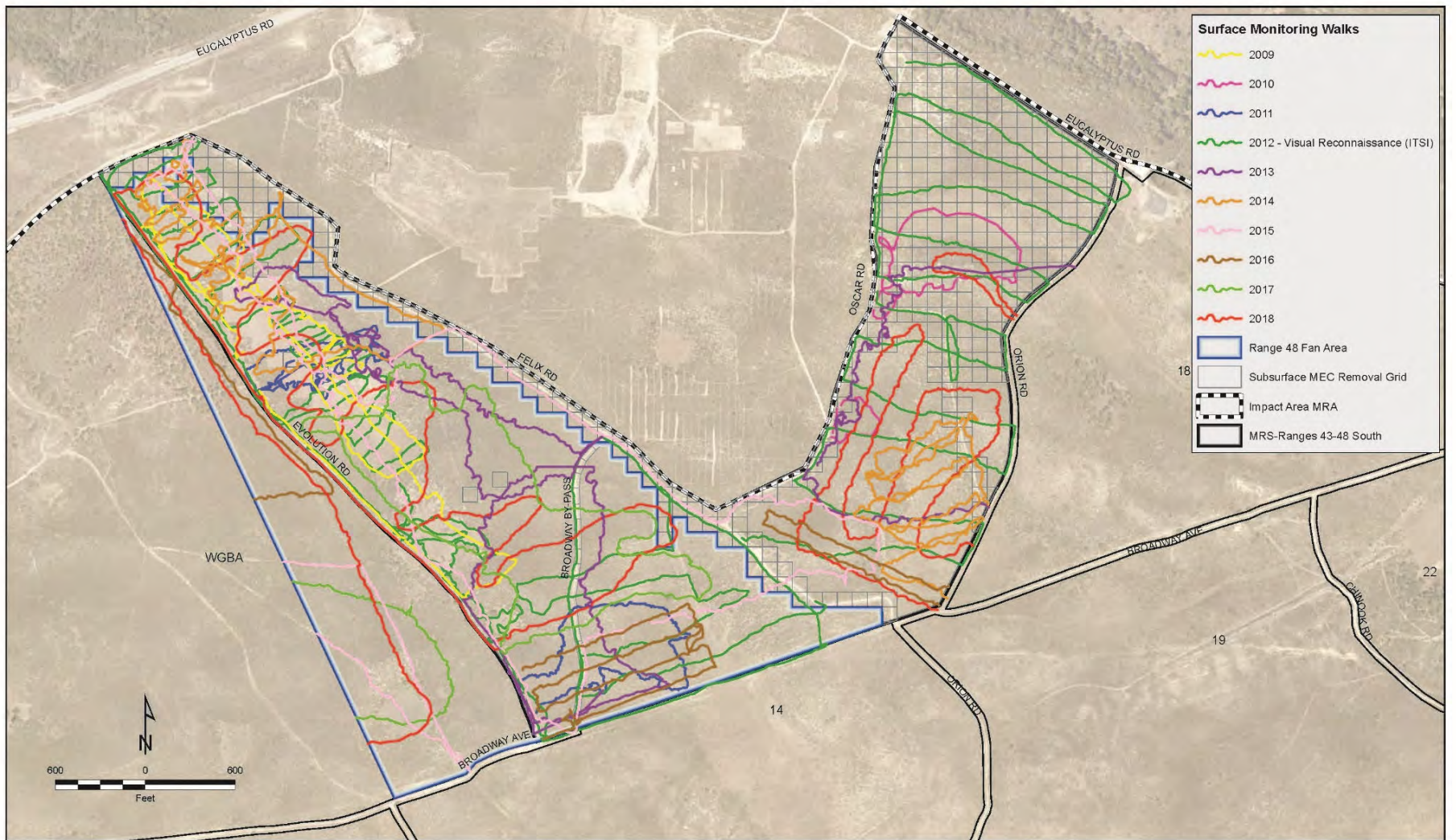




Technical Memorandum
 MEC Remedial Action
 Track 3 Impact Area MRA
 MRS-Ranges 43-48 South
 Former Fort Ord, California

Figure 8
 Geophysical Anomaly Density
 (From Transect DGM)

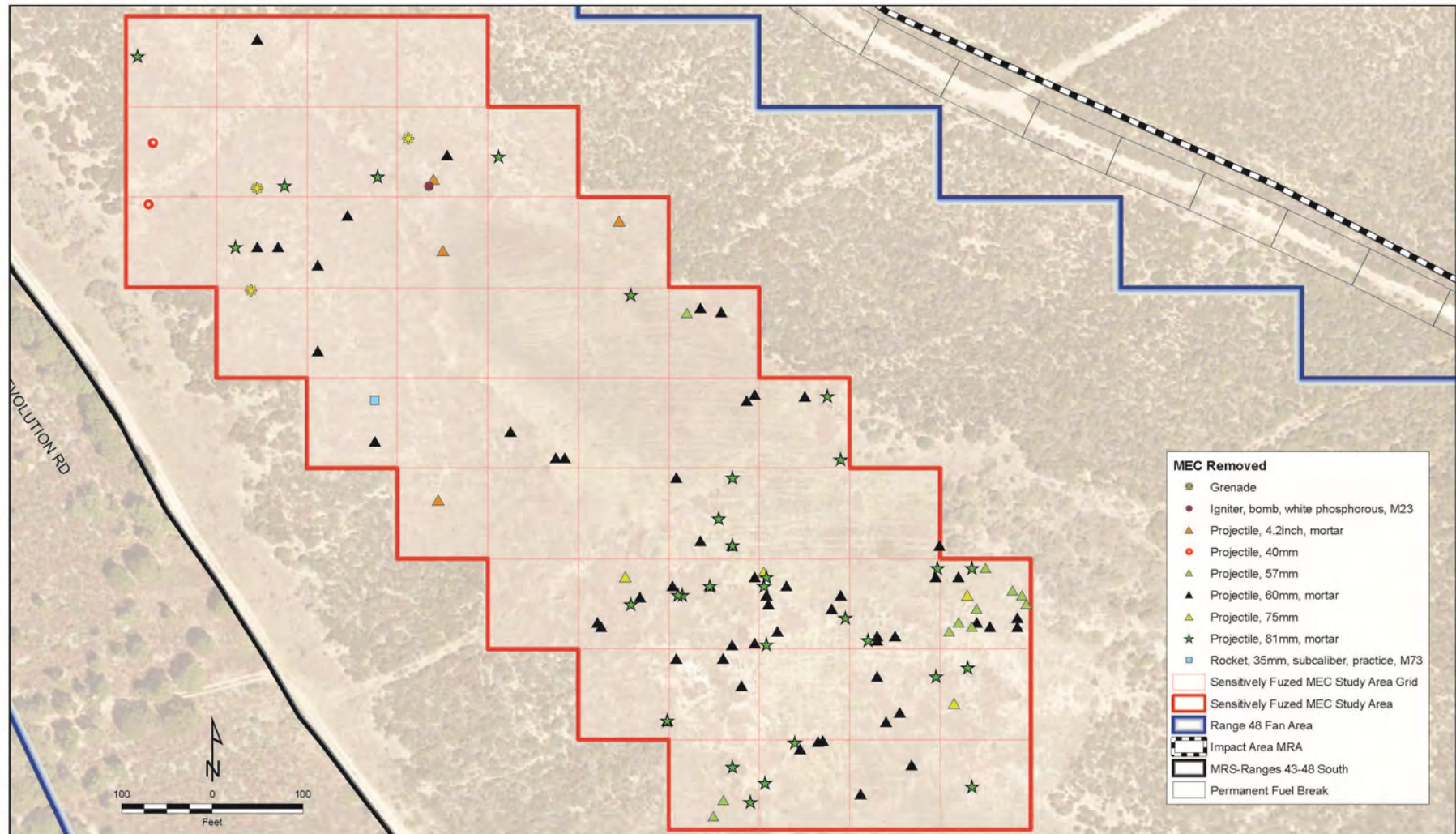




Technical Memorandum
 MEC Remedial Action
 Track 3 Impact Area MRA
 MRS-Ranges 43-48 South
 Former Fort Ord, California

Figure 10
 Surface Monitoring Walks





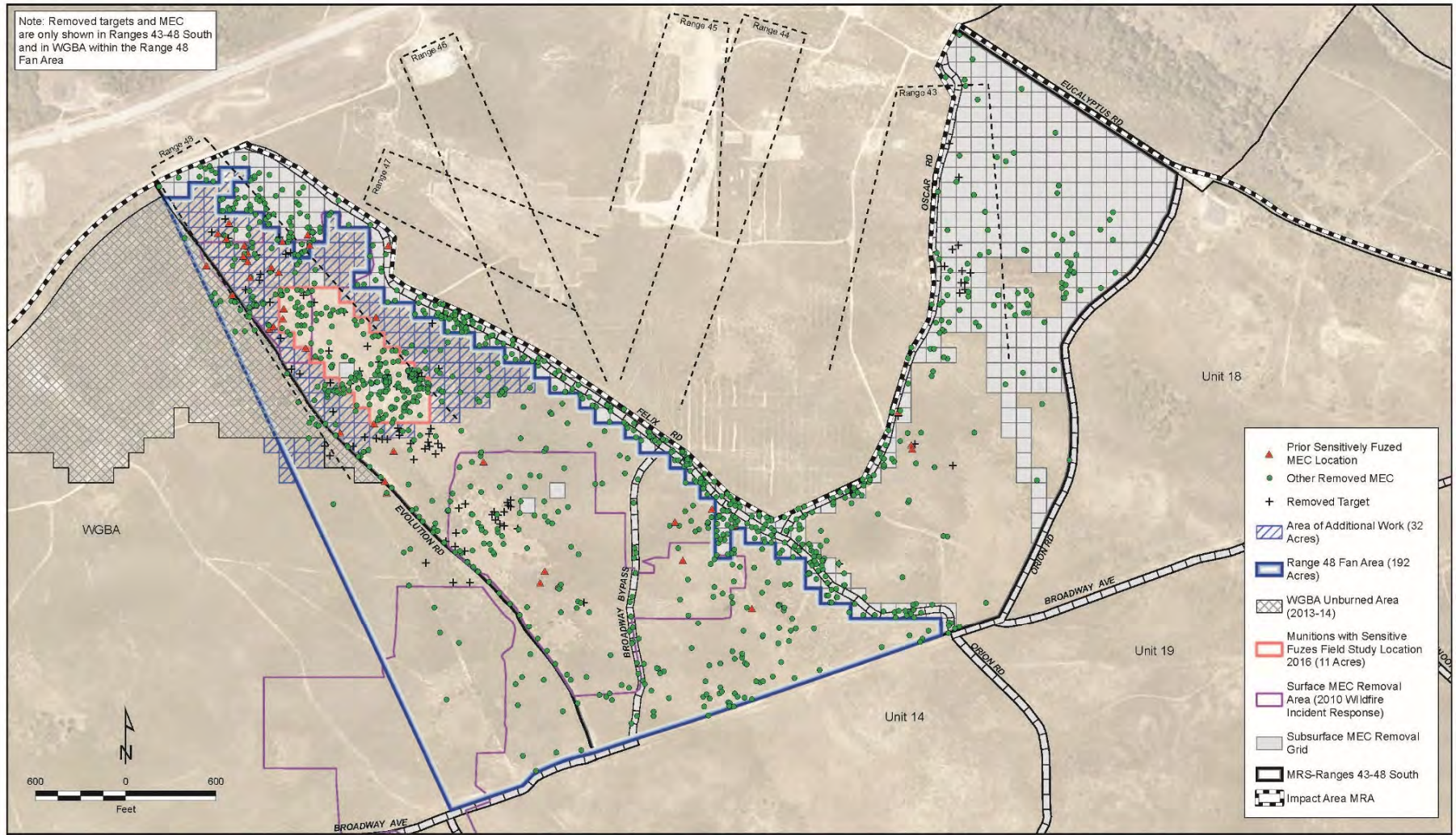
MEC Removed

- ★ Grenade
- Igniter, bomb, white phosphorous, M23
- ▲ Projectile, 4.2inch, mortar
- Projectile, 40mm
- ▲ Projectile, 57mm
- ▲ Projectile, 60mm, mortar
- ▲ Projectile, 75mm
- ★ Projectile, 81mm, mortar
- Rocket, 35mm, subcaliber, practice, M73
- ▭ Sensitively Fuzed MEC Study Area Grid
- ▭ Sensitively Fuzed MEC Study Area
- ▭ Range 48 Fan Area
- Impact Area MRA
- MRS-Ranges 43-48 South
- Permanent Fuel Break

Figure 12

Munitions with Sensitive Fuzes Field Study Area

Note: Removed targets and MEC are only shown in Ranges 43-48 South and in WGBA within the Range 48 Fan Area



- ▲ Prior Sensitively Fuzed MEC Location
- Other Removed MEC
- ✚ Removed Target
- ▨ Area of Additional Work (32 Acres)
- Range 48 Fan Area (192 Acres)
- ▩ WGBA Unburned Area (2013-14)
- ▨ Munitions with Sensitive Fuzes Field Study Location 2016 (11 Acres)
- Surface MEC Removal Area (2010 Wildfire Incident Response)
- ▩ Subsurface MEC Removal Grid
- ▬ MRS-Ranges 43-48 South
- ▬ Impact Area MRA

Technical Memorandum
 MEC Remedial Action
 Track 3 Impact Area MRA
 MRS-Ranges 43-48 South
 Former Fort Ord, California

Figure 13
 Area of Additional Surface and Near-Surface
 MEC Removal in Range 48 Fan Area

