

MR Status
Fort Ord MR BCT
13 November 2019

BLM AREA B

Security Measures and Outreach

- The website and kiosks were updated with current trail closure information on 7/3/2019.
- Trails within Unit A and Unit B are closed.
- Roads are subject to temporary closure during subsurface removal operations.

Subsurface MEC Removal

- All planned subsurface removals have been completed in:
 - Units B-3E and B-3E-NE
 - Units B-3W and C
 - Unit B-2A
 - Unit B
- Subsurface MEC removal on the 12-ft wide trail footprints has been completed on:
 - Unit A: Trails 69, 67, 68, 65 (to be abandoned), and 66
- Subsurface removal on additional road segments is in progress. Unit B perimeter fence was removed. DGM was completed (9/24). Target reacquisition and intrusive investigation are in progress. As of 11/8, 4,661 targets were identified for intrusive investigation; 2,541 have been investigated. Analog process will be used in DGM data gap areas.

IMPACT AREA

FIELD ACTIVITIES

Impossible Canyon Road and Wildcat Ridge Road Fuel Break Work

- Subsurface removal activities were completed 6/17. Fuel break markers were installed.

Fuel Breaks Additional Verification

- The Metal Mapper (MM) 2x2 dynamic survey was conducted from 10/22/2018 to 4/16/2019 (25.5 acres).
- 437 preliminary cued targets in 3 road grids were previously excavated (completed 1/10). This information will be used to refine the classification process.
- The MM 2x2 cued survey is complete in 82% of the work area as of 11/8. As of 11/8, 9,609 cued targets have been identified for intrusive investigation; 8,428 have been investigated.

Range 48 Northern Portion Near-surface MEC Removal

- Near-surface MEC removal (up to 6 inches in depth): 25 of 148 grids were completed from 1/15 to 2/28. Fieldwork was temporarily suspended due to habitat conservation requirements. Work resumed 6/12. Overall 94% complete as of 11/8. DGM will be conducted.

Target/Debris Disposal

- Demolition operations were conducted on 10/9, 10/23 and 10/25.
- Nine off-site shipments of MD have been completed to date.

OTHER ACTIVITIES

Impact Area North Perimeter Fence Construction

- Fence construction was completed on 8/12. Fuel break markers were installed.

MMRP SITE SECURITY PROGRAM

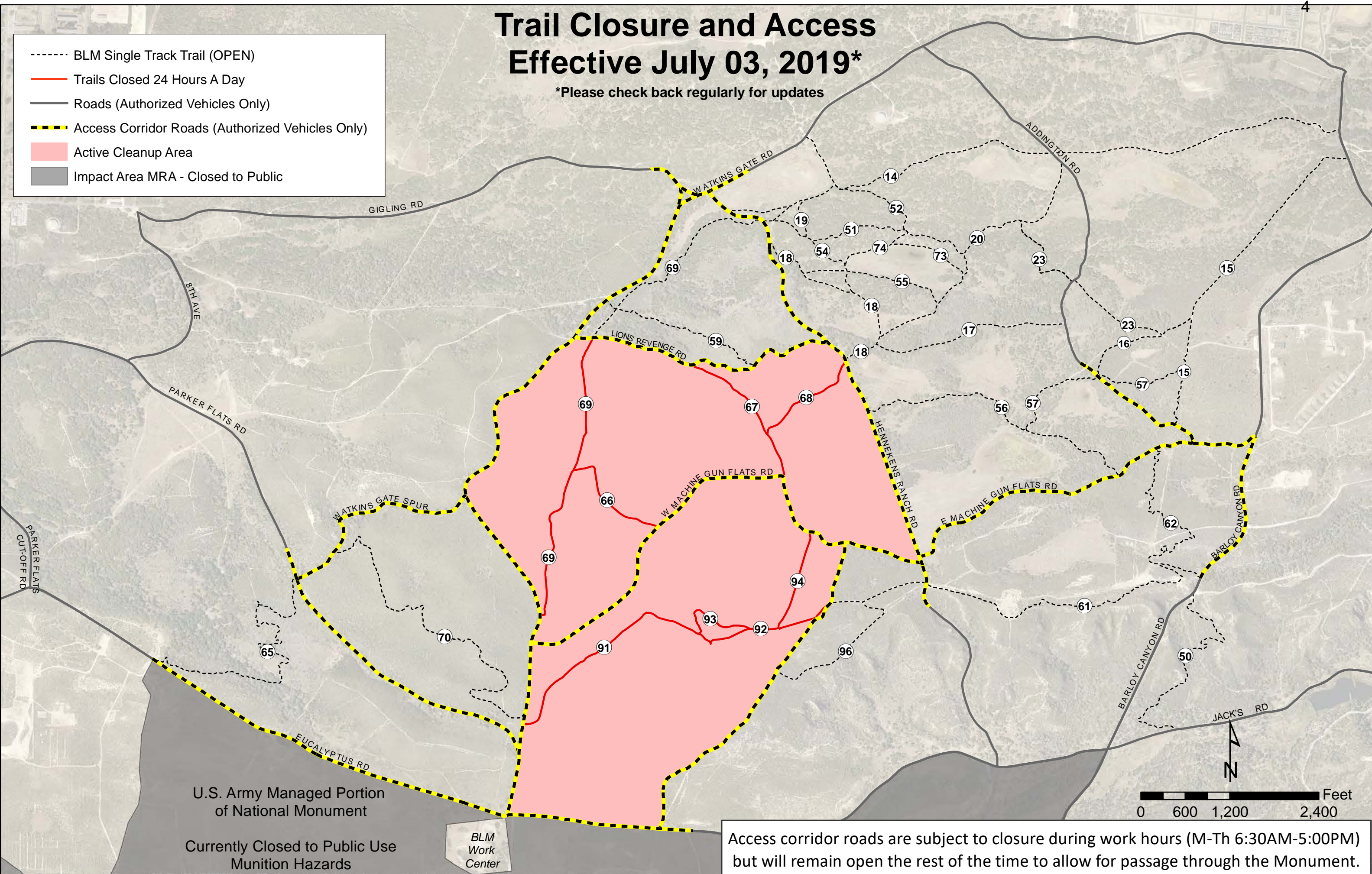
Update for November 13, 2019 BCT

- Trespass Incident Reports
 - Last 24 days (10/4/2019 – 11/07/2019): 2
 - On October 4, 2019 staff discovered graffiti painted on the old grenade range on Riso Ridge Road at Range 36.
 - On 23 October at 11:40 a.m., UXO technicians discovered a trespasser walking northbound on Evolution Road x Stinger Road in the Impact Area. The individual was removed from the site and was cited for trespassing by POMPD.
 - Year to Date: 31
- Munitions Incident Reports
 - Last 24 days (10/4/2019 – 11/07/2019): 1
 - On 7 November 2019 a 3.5” rocket motor was found at the OU2 Landfill. The item was determined to be MD and was removed to scrap.
 - Year to Date: 7
- Community Education Participants– Year to Date: 240
- Munitions Recognition and Safety Training Participants – Year to Date: 256

Trail Closure and Access Effective July 03, 2019*

*Please check back regularly for updates

- BLM Single Track Trail (OPEN)
- Trails Closed 24 Hours A Day
- Roads (Authorized Vehicles Only)
- Access Corridor Roads (Authorized Vehicles Only)
- Active Cleanup Area
- Impact Area MRA - Closed to Public



U.S. Army Managed Portion
of National Monument

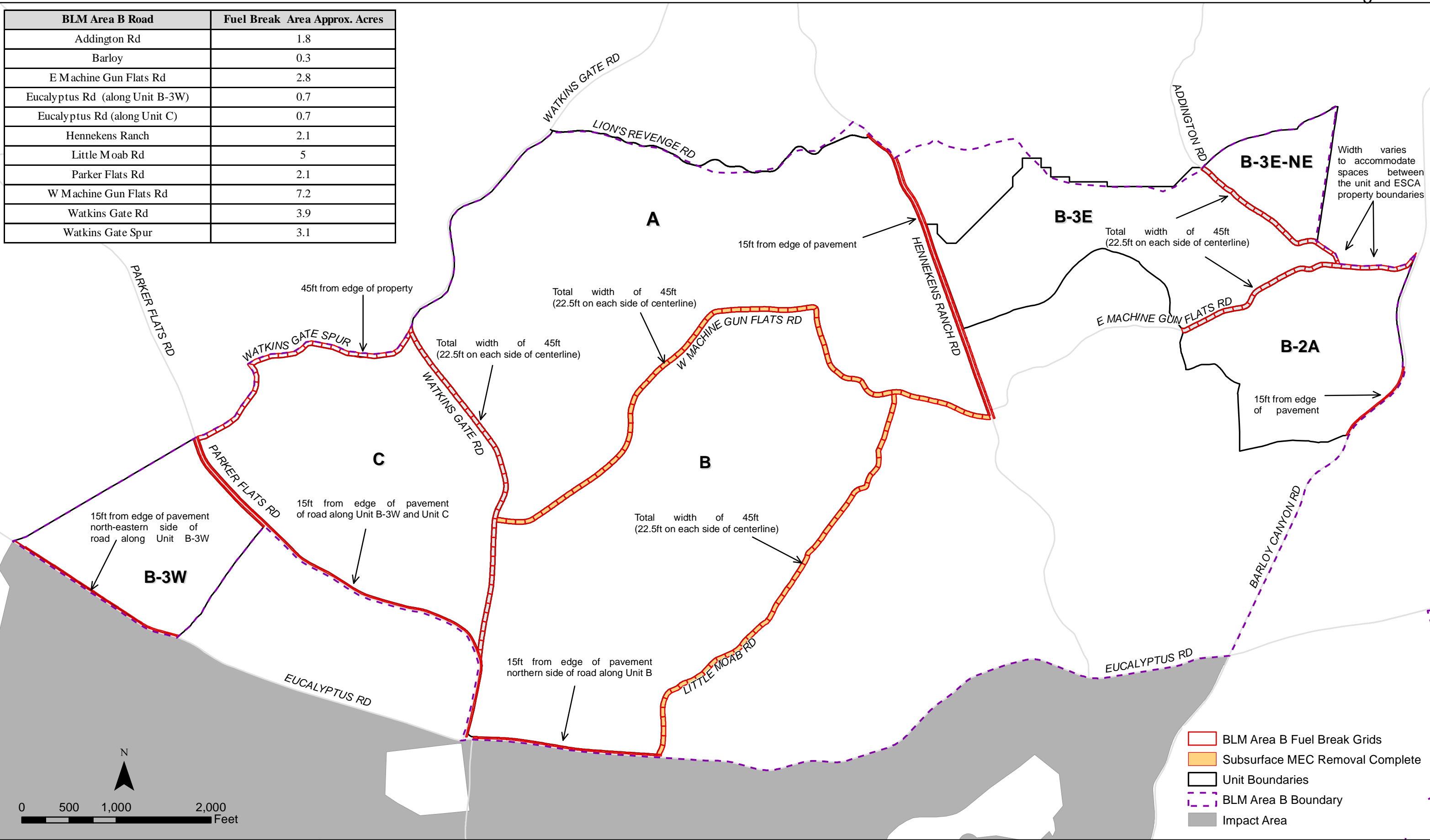
Currently Closed to Public Use
Munition Hazards

BLM
Work
Center



Access corridor roads are subject to closure during work hours (M-Th 6:30AM-5:00PM) but will remain open the rest of the time to allow for passage through the Monument.

BLM Area B Road	Fuel Break Area Approx. Acres
Addington Rd	1.8
Barloy	0.3
E Machine Gun Flats Rd	2.8
Eucalyptus Rd (along Unit B-3W)	0.7
Eucalyptus Rd (along Unit C)	0.7
Hennekens Ranch	2.1
Little Moab Rd	5
Parker Flats Rd	2.1
W Machine Gun Flats Rd	7.2
Watkins Gate Rd	3.9
Watkins Gate Spur	3.1



Width varies to accommodate spaces between the unit and ESCA property boundaries

Total width of 45ft (22.5ft on each side of centerline)

Total width of 45ft (22.5ft on each side of centerline)

Total width of 45ft (22.5ft on each side of centerline)

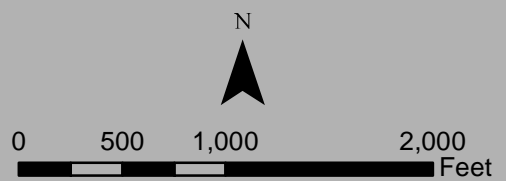
Total width of 45ft (22.5ft on each side of centerline)

15ft from edge of pavement of road along Unit B-3W and Unit C

15ft from edge of pavement northern side of road along Unit B

15ft from edge of pavement north-eastern side of road along Unit B-3W

- BLM Area B Fuel Break Grids
- Subsurface MEC Removal Complete
- Unit Boundaries
- BLM Area B Boundary
- Impact Area

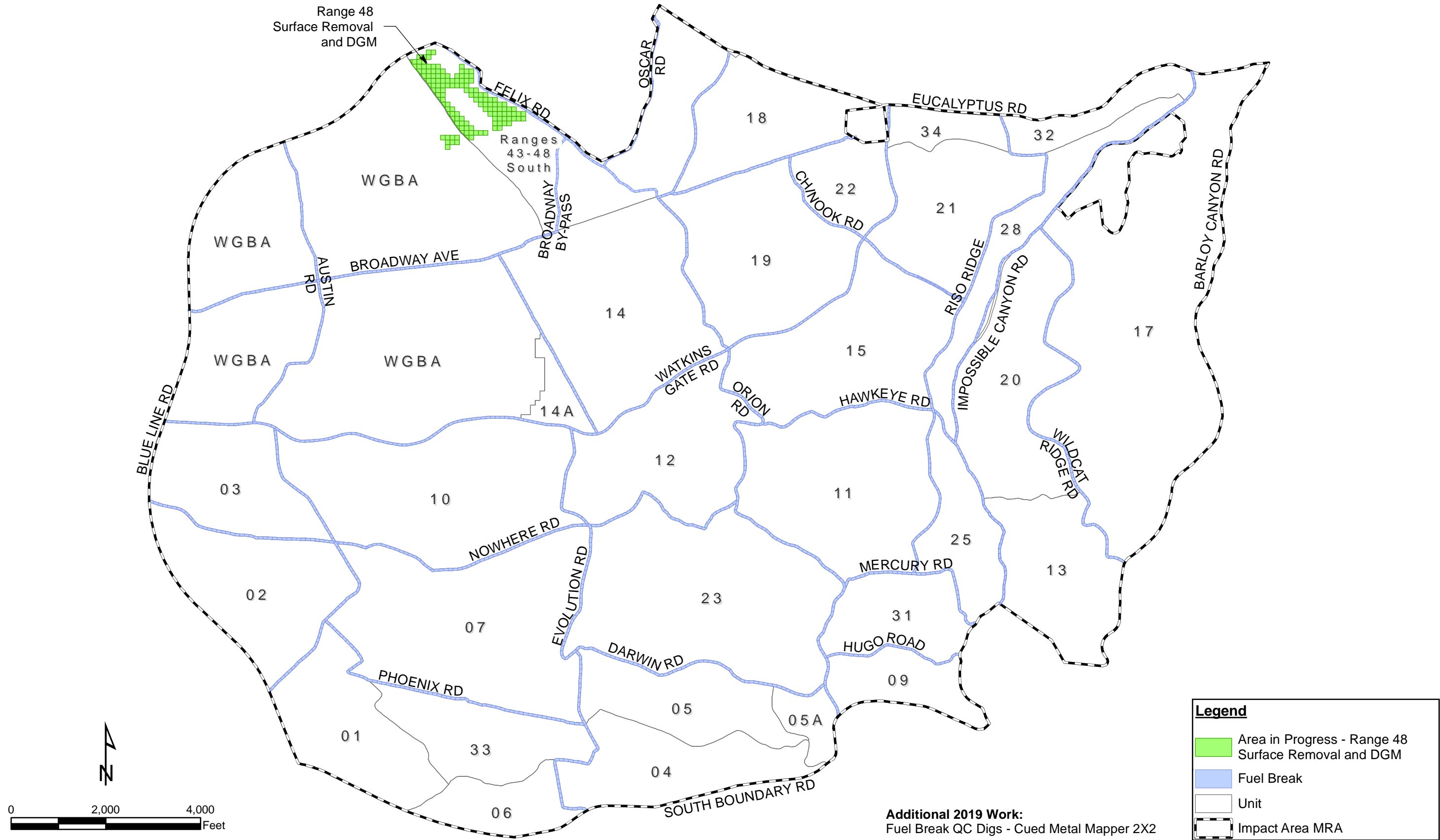


BLM Area B - FWV 025
FORMER FORT ORD
MONTEREY COUNTY, CALIFORNIA

OE-0900B.4

Figure 1
BLM Area B Fuel Breaks

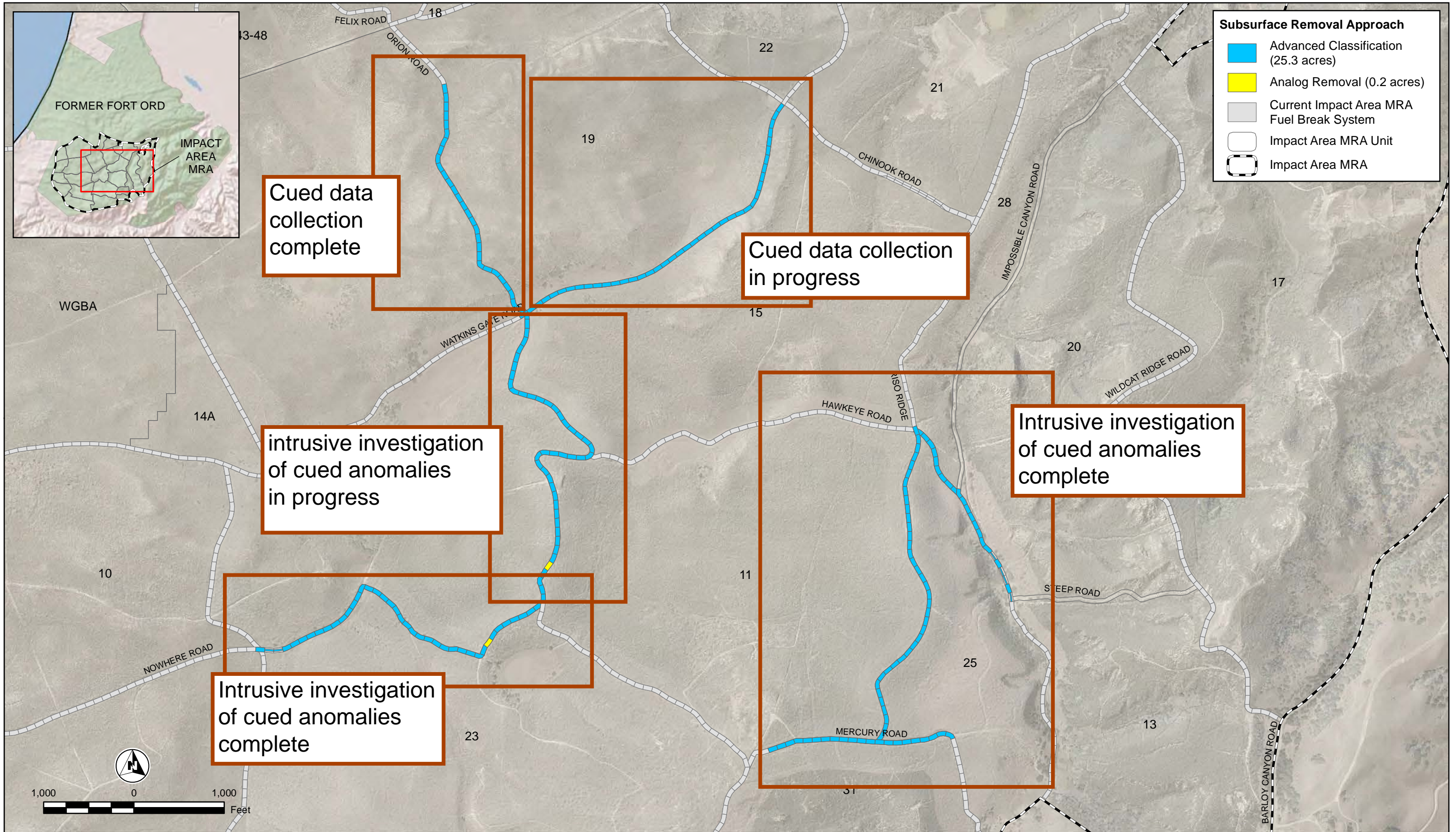




Munitions and Explosives of Concern Remedial Action
 Impact Area MRA
 Former Fort Ord, California

Figure 1
 Remaining 2019 Field Activities
 as of August 19, 2019





Subsurface Removal Approach

- Advanced Classification (25.3 acres)
- Analog Removal (0.2 acres)
- Current Impact Area MRA Fuel Break System
- Impact Area MRA Unit
- Impact Area MRA

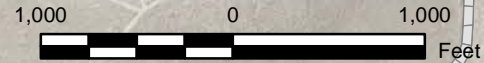
Cued data collection complete

Cued data collection in progress

intrusive investigation of cued anomalies in progress

intrusive investigation of cued anomalies complete

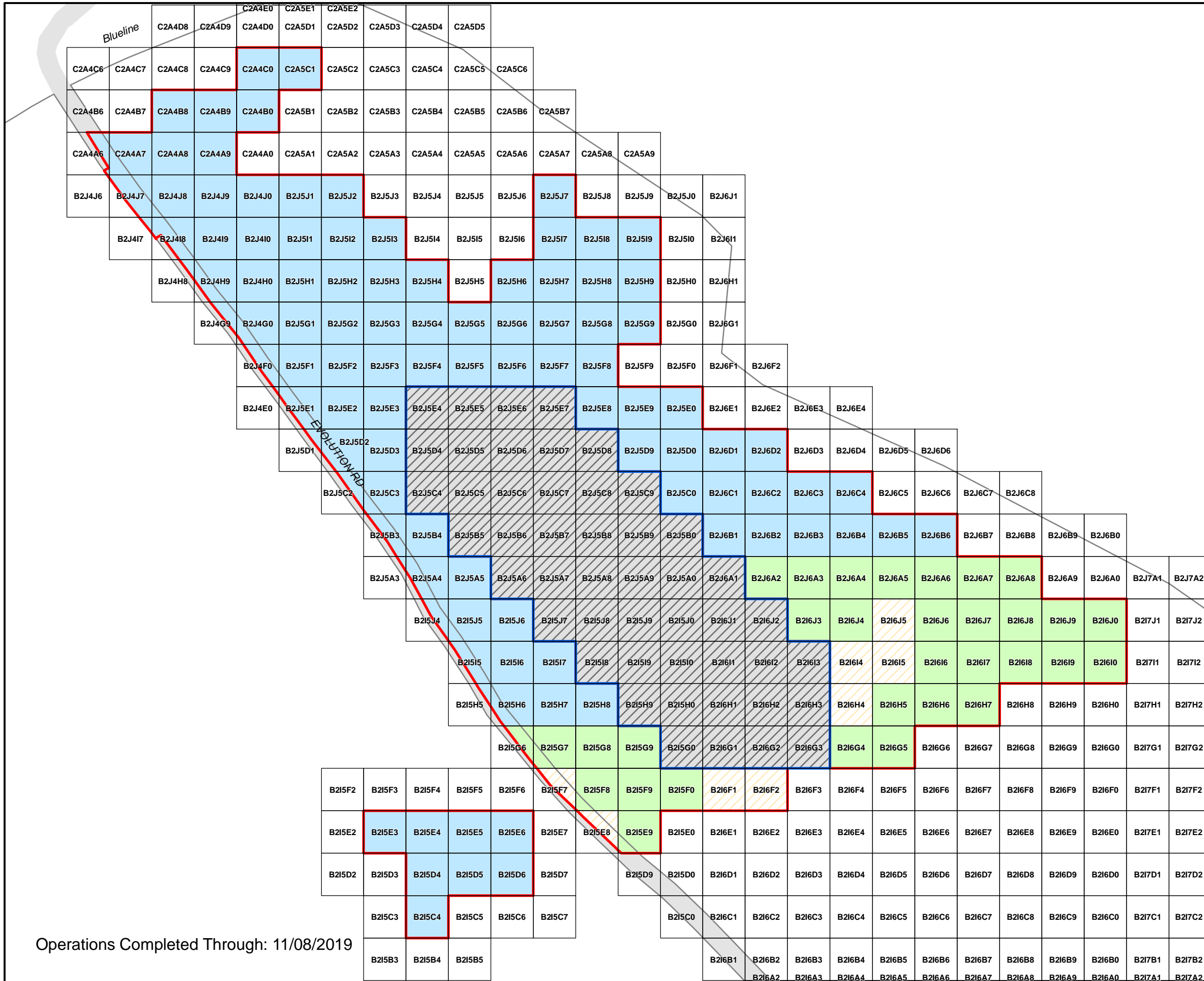
intrusive investigation of cued anomalies complete



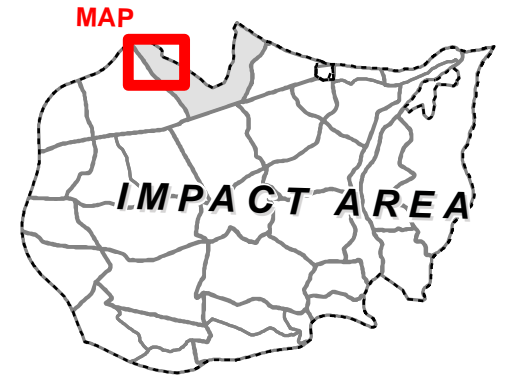
Technical Information Paper
 Supplemental Quality Control Investigation
 Impact Area Munitions Response Area Permanent Fuel Breaks
 Former Fort Ord, California

OE-0685D.14

Figure 11
 Additional Subsurface Removal Approach

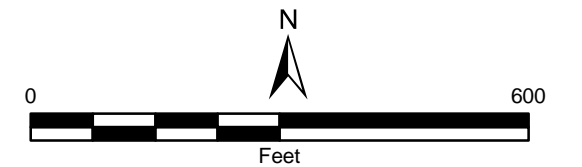


U.S. ARMY CORPS OF ENGINEERS
SACRAMENTO DISTRICT



Legend

- Work Boundary - 2019
- Field Study Area - 2016
- Fuel Breaks
- Mag and Dig Op Status**
- Mag and Dig Op Planned
- Mag and Dig Op Complete
- Mag and Dig Op QC Complete
- Mag and Dig Op QA Complete



FORMER FORT ORD
Range 48
Mag and Dig Ops MEC Removal Status