




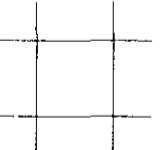
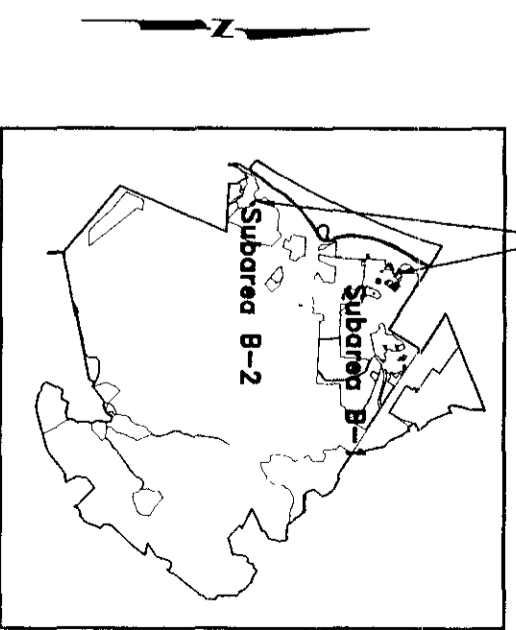


EXPLANATION

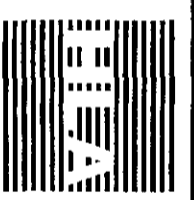
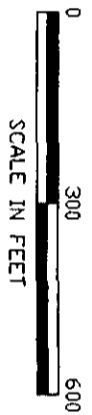
-  PARCEL BOUNDARY
-  CERFA PARCEL WITH QUALIFIER(S)
-  CERFA DISQUALIFIED PARCEL
-  PETROLEUM STORAGE
-  HAZARDOUS MATERIAL STORAGE
-  1-ACRE CERFA STUDY GRID



McKINNEY HOMELESS ACT GROUP B PARCELS

KEY MAP

PROPERTY BOUNDARIES INDICATED ARE APPROXIMATE AND ARE NOT INTENDED TO REPRESENT THE LEGAL DESCRIPTION OF THE PARCEL(S)



Harding Lawson Associates
Engineering and Environmental Services

DRAWN RJP JOB NUMBER 25894 0017615

CERFA Parcel Classifications
McKinney Homeless Act
Group B Parcels
Environmental Baseline Survey
Former Fort Ord, California

APPROVED 

DATE 6/95

PLATE **8**
REVISED DATE