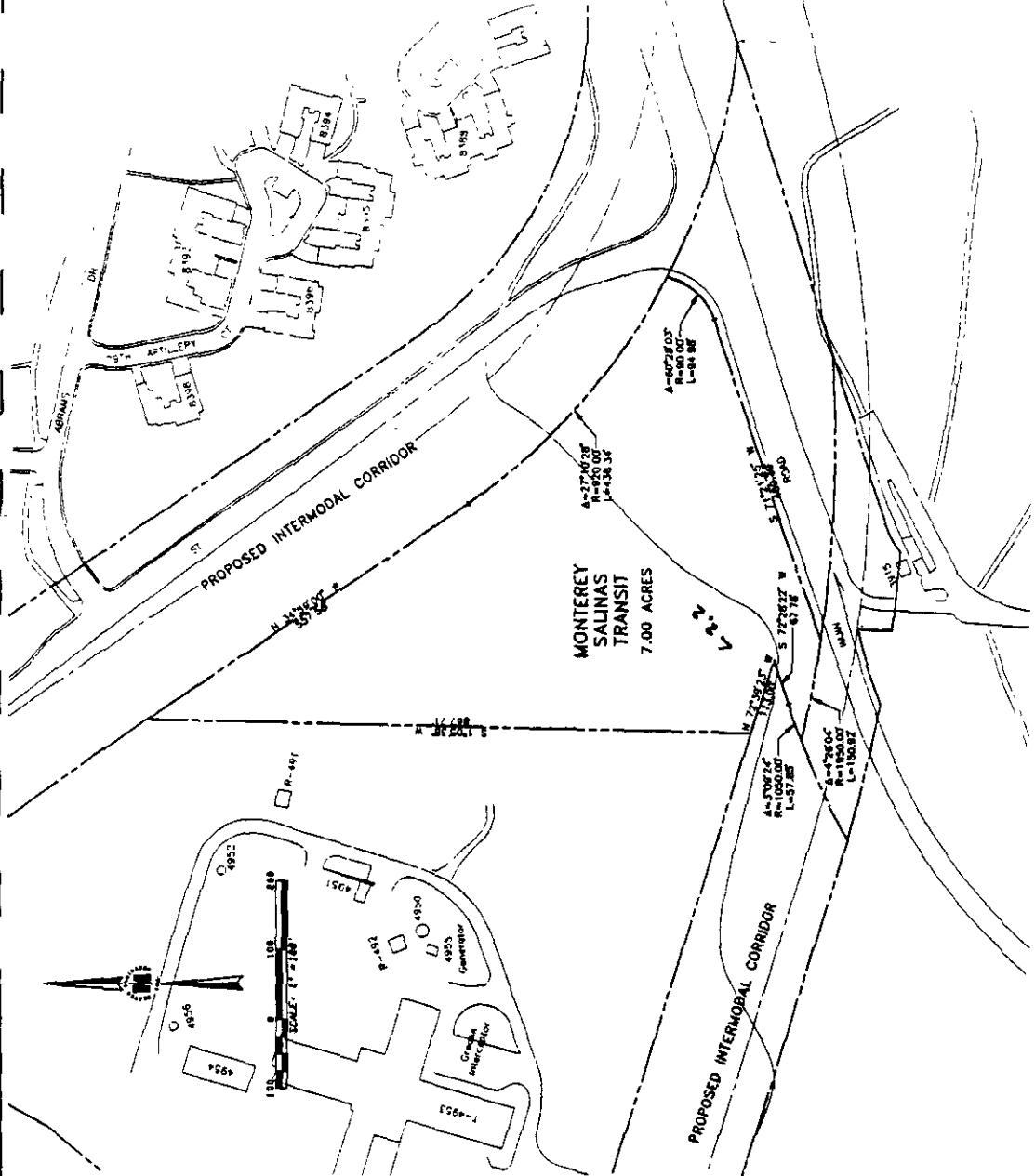


APPENDIX C
RECORDS OF SURVEY

**Table C1. Records of Survey
Main Garrison Parcels**

Parcel	Status	Page Number
E2	Not available	---
E2b.1	Not available	---
E2b.2	Not available	---
E2b.3	Not available	---
E2c.1	Not available	---
E2c.2	Not available	---
E2c.3	Not available	---
E2c.4	Not available	---
E2d	Not available	---
E2e	Not available	---
E15.1	Not available	---
E15.2	Not available	---
L2.2	Enclosed	C1
L5.8.2	Enclosed	C2
L12.2.2	Enclosed	C3
L12.2.3	Enclosed	C3
L20.16	Enclosed	C4 and C5
L20.17.1	Enclosed	C6
L20.17.2	Enclosed	C6
LE20.16	Enclosed	C4
S1.4	Enclosed	C7
S1.5.1	Enclosed	C7



PRELIM - REC 25 JUN 96

RECORD OF SURVEY
 BOUNDARY OF A 7.00 ACRE PARCEL
 BEING A PORTION
 OF FORT ORD MILITARY RESERVATION

IN
 RANCHO NOCHE BUENA
 MONTEREY CITY LANDS TRACT No. 1
 MONTEREY COUNTY, CALIFORNIA

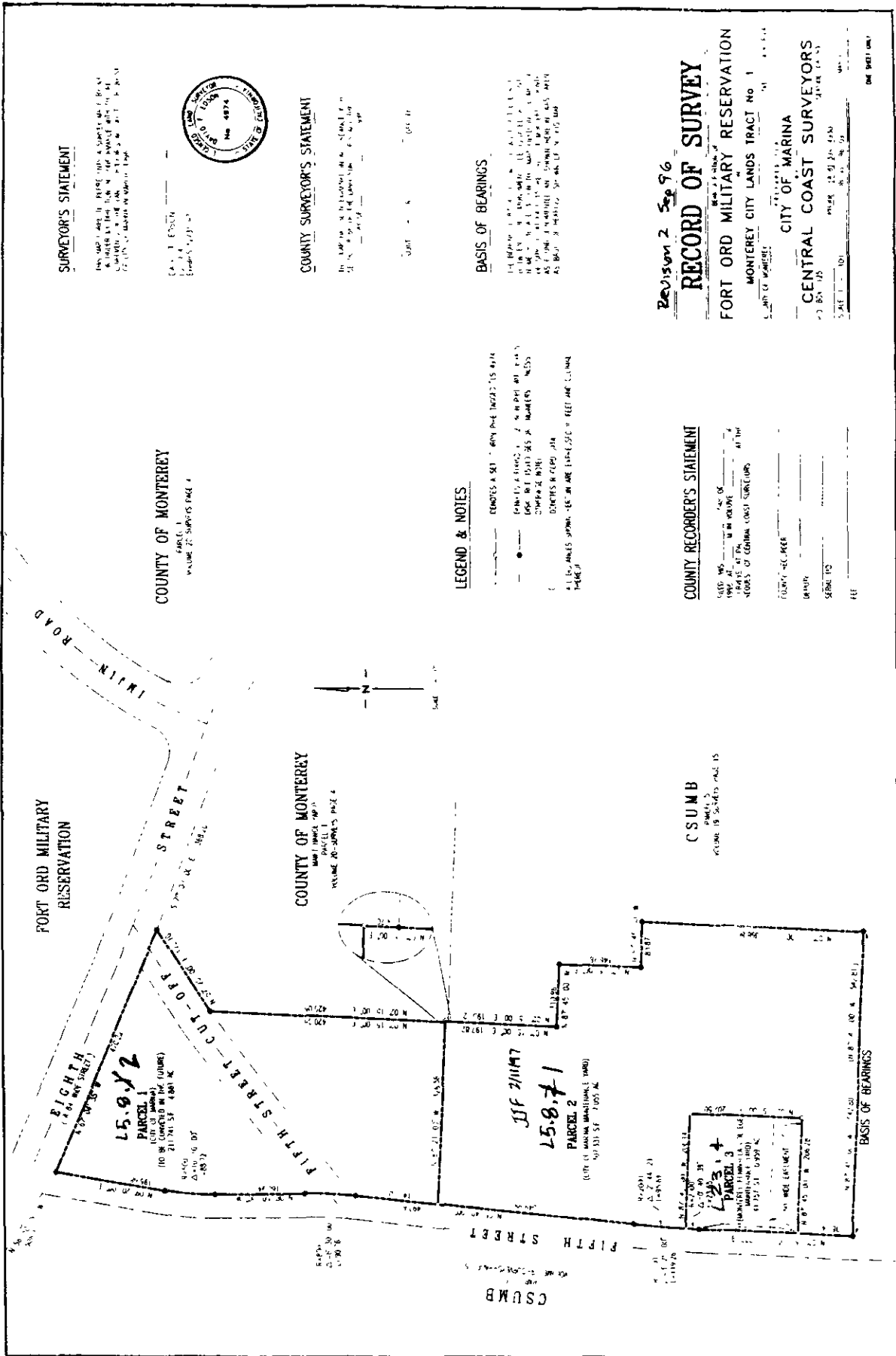
FOR THE
MONTEREY SALINAS TRANSIT



BESTOR ENGINEERS, INC.
 CIVIL ENGINEERS - SURVEYORS - LAND PLANNERS
 8701 BLUE LAMARQUE LAKE, MONTEREY, CALIFORNIA 95060
 SCALE 1"=100' DATE JUNE 1996 NO 5088
 SHEET 3 OF 5

L. 2. 2.

L5.8.1/2



SURVEYOR'S STATEMENT

I, JAMES H. HARRIS, being duly sworn, depose and say that I am a duly licensed Surveyor in the State of California, and that I am the author of the above and foregoing plat, and that the same is a true and correct copy of the original plat on file in my office, and that the same is a true and correct copy of the original plat on file in my office.

WITNESSED my hand and seal of office at Monterey, California, this 1st day of August, 1930.



COUNTY SURVEYOR'S STATEMENT

I, JAMES H. HARRIS, being duly sworn, depose and say that I am a duly licensed Surveyor in the State of California, and that I am the author of the above and foregoing plat, and that the same is a true and correct copy of the original plat on file in my office, and that the same is a true and correct copy of the original plat on file in my office.

WITNESSED my hand and seal of office at Monterey, California, this 1st day of August, 1930.

BASIS OF BEARINGS

The bearings in this plat were taken from the meridian of the State of California, and the same are true and correct bearings as shown by the original plat on file in my office.

LEGEND & NOTES

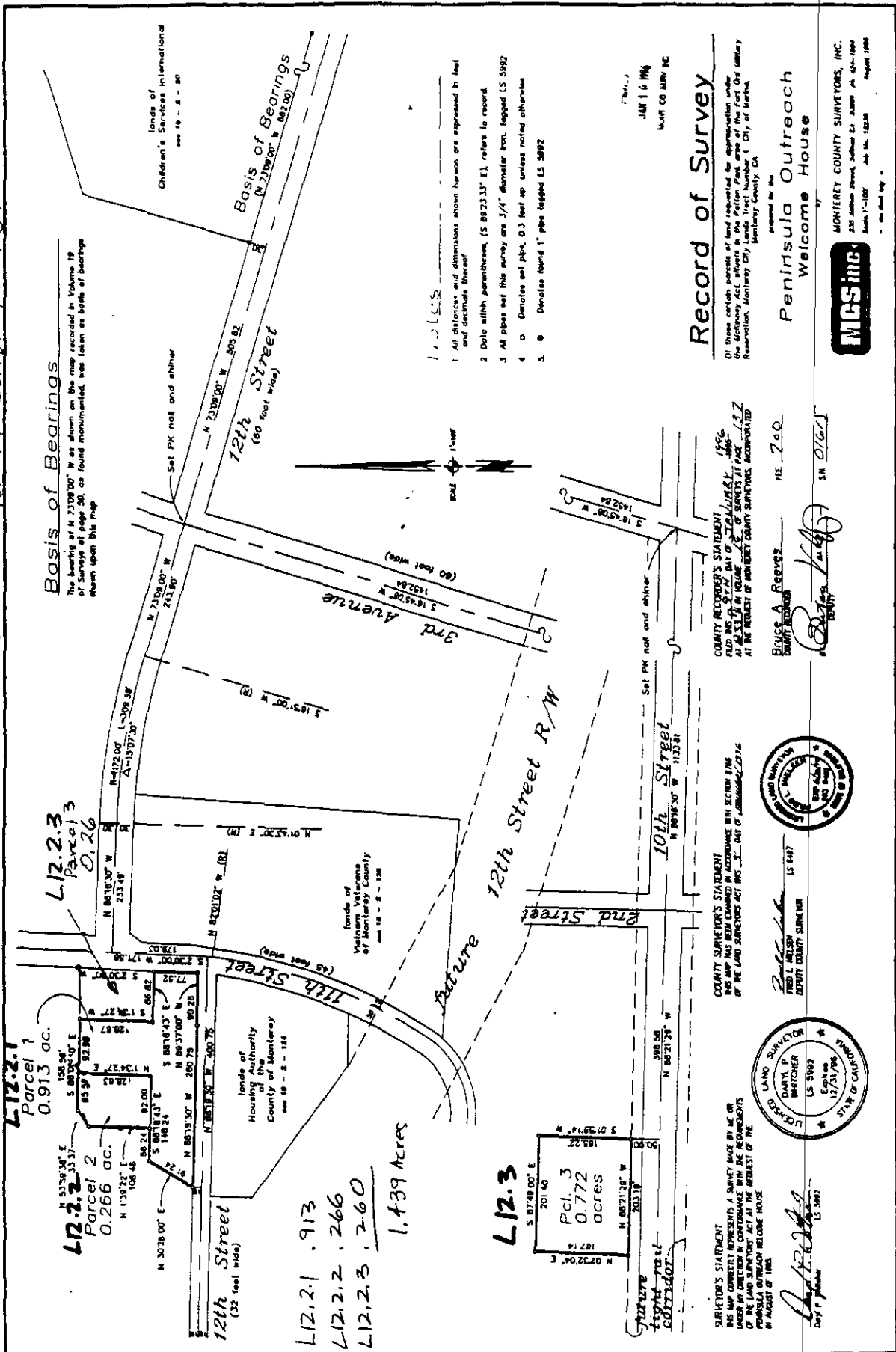
--- DENOTES A SET OF BOUNDARIES AS SHOWN ON THE ORIGINAL PLAT.
 --- DENOTES A SET OF BOUNDARIES AS SHOWN ON THE ORIGINAL PLAT.
 --- DENOTES A SET OF BOUNDARIES AS SHOWN ON THE ORIGINAL PLAT.
 --- DENOTES A SET OF BOUNDARIES AS SHOWN ON THE ORIGINAL PLAT.

COUNTY RECORDER'S STATEMENT

I, JAMES H. HARRIS, being duly sworn, depose and say that I am a duly licensed Surveyor in the State of California, and that I am the author of the above and foregoing plat, and that the same is a true and correct copy of the original plat on file in my office, and that the same is a true and correct copy of the original plat on file in my office.

Revision 2 5p 96
RECORD OF SURVEY
 FORT ORD MILITARY RESERVATION
 MONTEREY CITY LANDS TRACT No. 1
 COUNTY OF MONTEREY
 CITY OF MARINA
 CENTRAL COAST SURVEYORS
 23 BAY ST.
 MONTEREY, CALIF. 94024
 SCALE 1" = 100'

L12.2.1+2/L12.3 Vol 19 SURV Pg 137



Basis of Bearings
 The bearings of N 71°09'00" W as shown on this map recorded in Volume 19 of Surveys at page 50, as found monumented, was taken as basis of bearings shown upon this map.

- NOTES**
- All distances and dimensions shown hereon are expressed in feet and decimals thereof.
 - Date with parentheses, (S 89°23'33" E), refers to record.
 - All pipes set this survey are 3/4" diameter iron, topped LS 5982
 - 0 denotes set pipe, 0.3 feet up unless noted otherwise.
 - 0 denotes found 1" pipe topped LS 5982

7861.1
 JUN 1 6 1994
 WALT CO SURV INC

Record of Survey

Of these certain parcels of land requested for appropriation under the Act, the following are in the Public Park area of the Fort Ord Military Reservation, Monterey County, California, City of Marina.

Peninsula Outreach
 Welcome House



MONTEREY COUNTY SURVEYORS, INC.
 230 Avenue Street, Suite 201, Marina, CA 93955
 Phone 1-800-426-1000 Fax No. 162828 August 1988

L12.2.3
 Parcel 3
 0.26

L12.2.1
 Parcel 1
 0.913 ac.

L12.2.2
 Parcel 2
 0.266 ac.

L12.2.1 .913
 L12.2.2 .266
 L12.2.3 .260
 1.439 Acres

L12.3
 Parcel 3
 0.772
 acres

COUNTY RECORDER'S STATEMENT
 FILED IN 97-171 DAY OF JULY 1996
 AT 10:53 AM IN VOLUME 22 OF SURVEYS AT PAGE 37
 AT THE REQUEST OF MONTEREY COUNTY SURVEYORS, INCORPORATED

BRUCE A. REEVES
 COUNTY RECORDER
 Fee 7.00
 SW 0161

COUNTY SURVEYOR'S STATEMENT
 THIS MAP HAS BEEN EXAMINED IN ACCORDANCE WITH SECTION 8176
 OF THE LAND SURVEYORS ACT AND I, AS A MEMBER OF THE BOARD OF
 LAND SURVEYORS, ACT AT THE REQUEST OF PENINSULA OUTREACH WELCOME HOUSE



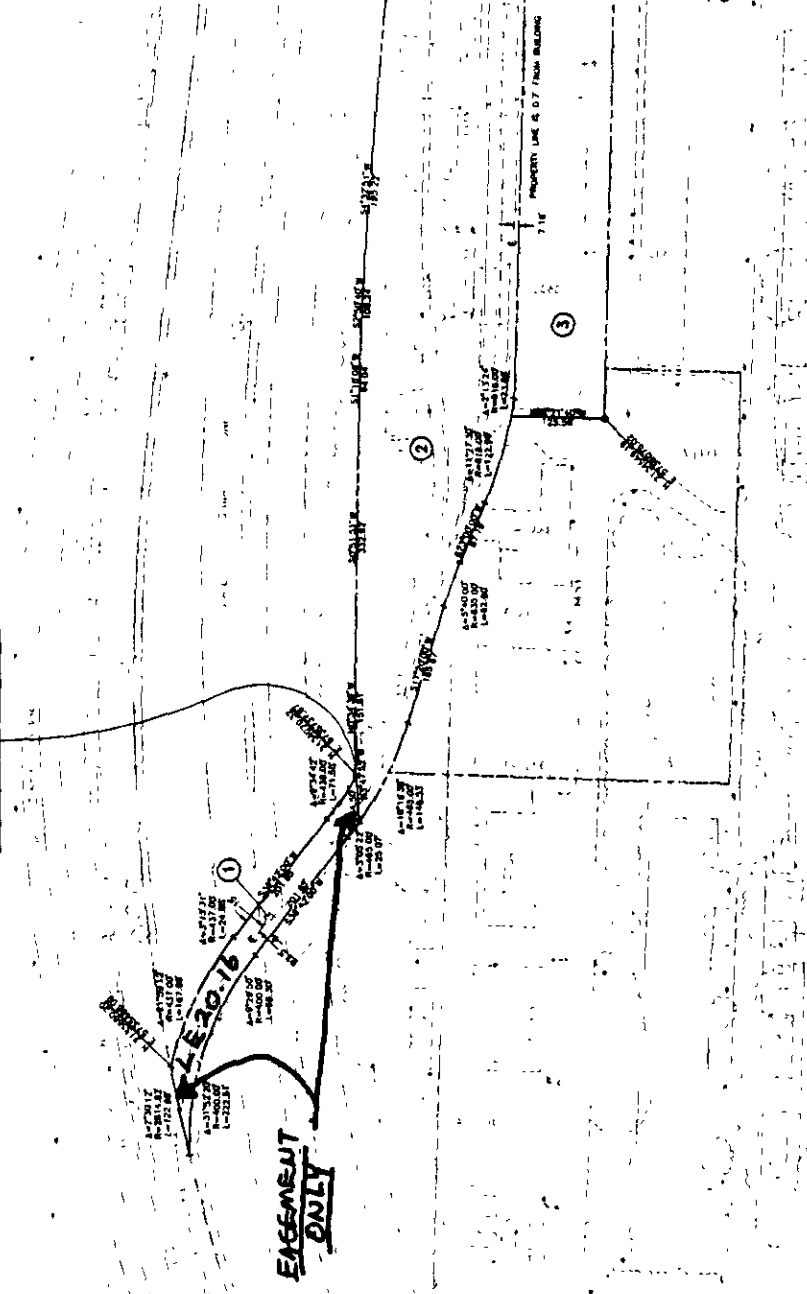
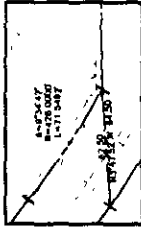
DAVID P. IMPECHER
 LAND SURVEYOR
 LS 5982
 Expires 12/31/96

L12.162/3

3

New L20.16

DETAIL



SURVEYOR'S STATEMENT

THIS MAP CORRECTLY REPRESENTS A SURVEY MADE BY ME OR UNDER MY DIRECTION IN COMFORMANCE WITH THE REQUIREMENTS OF THE SURVEYORS ACT AT THE REQUEST OF THE CITY OF MONTEREY IN APRIL 1996

JOHN M. VON ZANDER
L.S. #3754
STATE OF CALIFORNIA
R.C.E. #12310
EXPIRES 31 MARCH 1997



RECORDER'S STATEMENT

FILED FOR RECORD AT THE REQUEST OF THE CITY OF MONTEREY
DAY OF _____ 1996, AT _____ M. IN VOLUME _____
OF SURVEY MAPS AT PAGE _____ RECORDS OF MONTEREY COUNTY
CALIFORNIA

BRUCE A. REYES
COUNTY RECORDER
SERIAL NO _____ FEE \$ _____
DEPUTY

COUNTY SURVEYOR'S STATEMENT

THIS MAP HAS BEEN EXAMINED IN ACCORDANCE WITH SECTION 87066
OF THE LAND SURVEYORS ACT AND I AM

COUNTY SURVEYOR STATE OF CALIFORNIA
EAPRILES

NOTE REGARDING DERIVATION OF COORDINATES

STATE PLANE COORDINATES BASED ON THE NORTH AMERICAN DATUM OF 1983 (NAD 83) WERE OBTAINED FOR THE BOUNDARY POINTS USING GLOBAL POSITIONING SYSTEM (GPS) "FAST-STATIC" SURVEYING TECHNIQUES. THESE COORDINATES WERE THEN SCALED BY A MEAN SCALING FACTOR TO OBTAIN THE COORDINATES LISTED ON THIS SURVEY MAP. THE COORDINATES LISTED ARE THEREFORE NOT STATE PLANE COORDINATES TO OBTAIN GRID DISTANCES. HOWEVER, THE GRID DISTANCES BY THE MEAN SCALING FACTOR ARE NOT SIGNIFICANTLY DIFFERENT FROM THE GRID DISTANCES. THE BEARINGS AND DISTANCES SHOWN ARE GRID BEARINGS BASED ON THE LAMBERT PROJECTION FOR CALIFORNIA STATE PLANE ZONE 4.

Rev 2 25 June 96
RECORD OF SURVEY
BOUNDARY OF SIX PARCELS
BEING A PORTION
OF FORT ORD MILITARY RESERVATION
IN
RANCHO NOCHE BUENA
MONTEREY CITY LANDS TRACT No. 1
MONTEREY COUNTY, CALIFORNIA
FOR THE
TRANSPORTATION AUTHORITY FOR MONTEREY COUNTY

LEGEND
 EASEMENT DULY
 PROPERTY LINE
 DEMONSTRATION SET
 PARCEL NUMBER

PARCEL	ACRES	PAGE
1	0.210	1
2	10.543	1, 2, 3
3	3.862	1, 2
4	0.138	2
10.543		
3.867		

BASIS OF BEARINGS:
THE BASIS OF BEARINGS FOR THIS SURVEY IS THE GRID BEARING OF N 37°06'45" E
WITH REFERENCE TO THE NATIONAL GEODETIC CONTROL NETWORK (NAD 83) CONTROL POINTS
CA HIGH 05 17 AND 841 3450 IN 7041. THE HORIZONTAL DATUM IS THE NORTH
AMERICAN DATUM OF 1983 (NAD 83). THE GRID BEARING IS BASED ON THE LAMBERT
PROJECTION FOR CALIFORNIA STATE PLANE ZONE 4. THE BEARINGS FOR THE TWO
CONTROL POINTS WERE ESTABLISHED BY THE CALIFORNIA DEPARTMENT OF
TRANSPORTATION (CALTRANS) IN CONJUNCTION WITH THE NATIONAL GEODETIC SURVEY
(NAD 83) IN 1992. THE BEARINGS FOR THIS SURVEY WERE ESTABLISHED USING GLOBAL
POSITIONING SYSTEM (GPS) "FAST-STATIC" SURVEYING TECHNIQUES.

BESTOR ENGINEERS, INC.

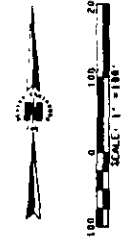
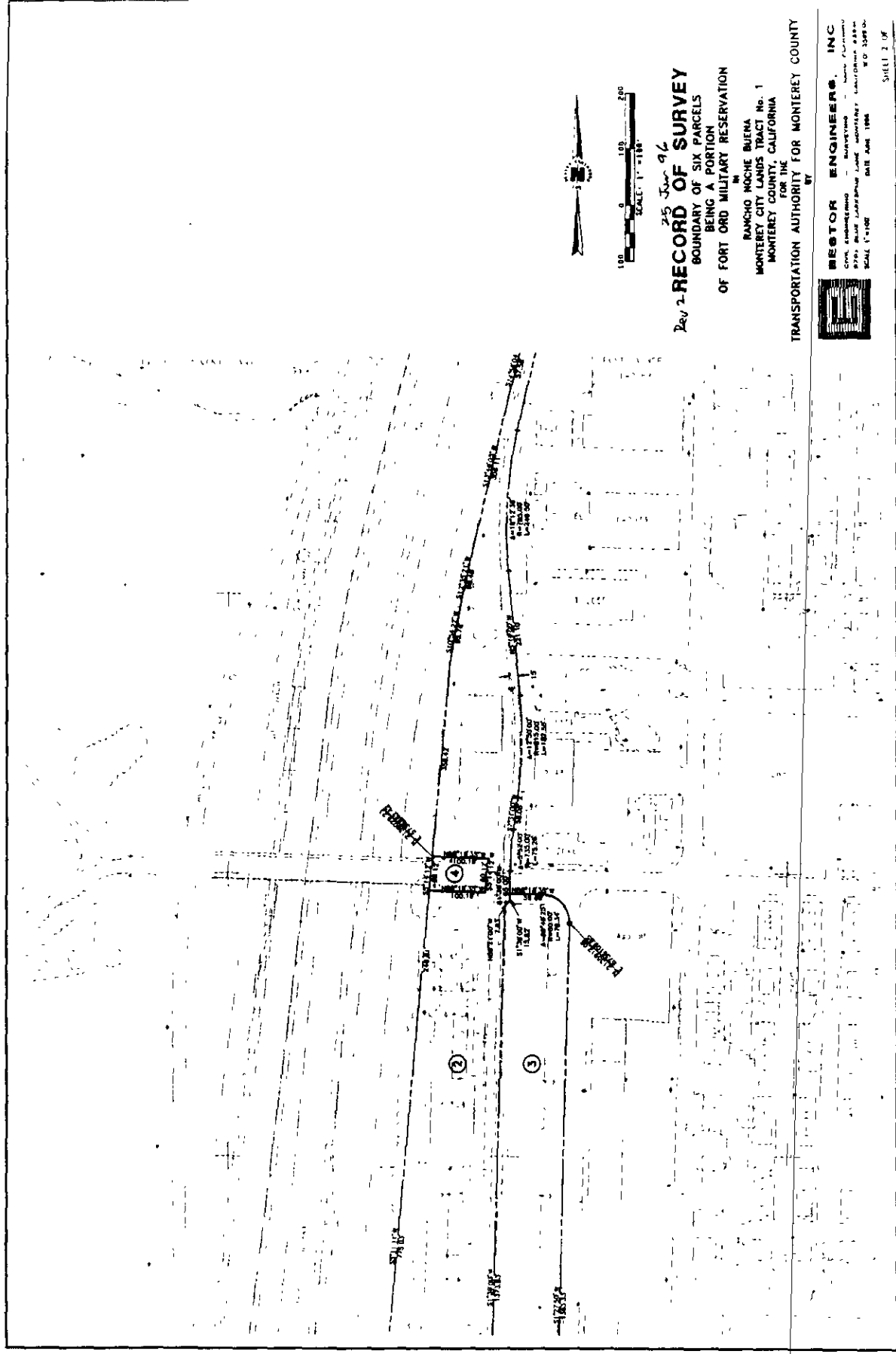
 5700 UNIVERSITY AVENUE, SUITE 200
 MONTEREY, CALIFORNIA 93940
 SCALE 1"=100'
 DATE 1-1-97
 SHEET 1 OF 3

14,548 see Simple to Mont. Co

12016

C4

New LZD.16



25 Jun 96
 Rev 2-RECORD OF SURVEY
 BOUNDARY OF SIX PARCELS
 BEING A PORTION
 OF FORT ORD MILITARY RESERVATION

BY
 BANCHE ROCHE BUENA
 MONTEREY CITY LANDS TRACT No. 1
 MONTEREY COUNTY, CALIFORNIA
 TRANSPORTATION AUTHORITY FOR MONTEREY COUNTY



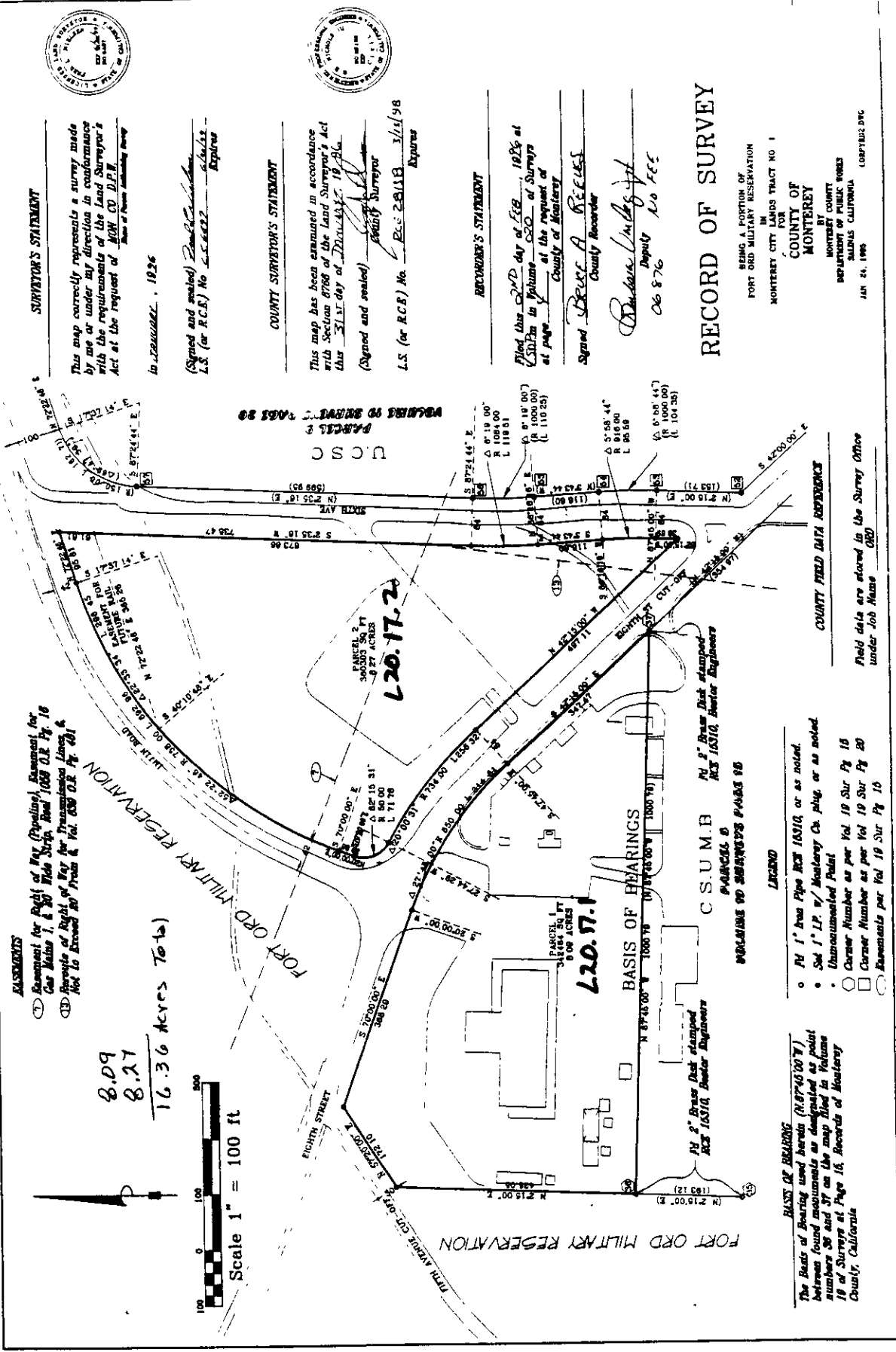
RESTOR ENGINEERS, INC.
 Civil, Mechanical, Electrical, Surveying, Planning, and
 Construction Services
 2701 Elgin Laboratory Road, Monterey, California 93940
 Phone: (408) 386-1100 FAX: (408) 386-1101
 MAIL: (408) 386-1100 DATE: June 1996 SHEET 2 OF 2

CS

13014

Vol 20 SURV Pg 4

L20.17.1+2



SURVEYOR'S STATEMENT

This map correctly represents a survey made by me or under my direction in conformance with the requirements of the Land Surveyor's Act at the request of JOHN CO D.P.M. State of Pennsylvania, Surveyor

In PENNSYLVANIA, 1926

(Signed and sealed) *Donald C. ...*
L.S. (or R.C.E.) No. 25522 Expires

COUNTY SURVEYOR'S STATEMENT

This map has been examined in accordance with Section 8708 of the Land Surveyor's Act this 31st day of DECEMBER, 1926.
(Signed and sealed) *County Surveyor*
L.S. (or R.C.E.) No. 25518 Expires 3/15/98

RECORD OF SURVEY

Filed this 2ND day of FEB, 1926 at 10:26 a.m. in Volume 200 of Surveys at page 4 at the request of County of Monterey

Signed *BRESC A. ...*
County Recorder
Richard ...
Deputy No. 555
06 876

RECORD OF SURVEY

BEING A PORTION OF
FORT ORD MILITARY RESERVATION
MONTEREY CITY LANDS TRACT NO. 1

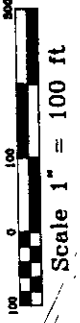
COUNTY OF MONTEREY

DEPARTMENT OF PUBLIC WORKS
SALINAS CALIFORNIA

JAN. 24, 1926

- REMARKS**
- ① Easement for Right of Way (Right-of-Way) Easement, for Gas Mains 1, & 30" Wide Strip Road 1688 D.R. Pg. 16
 - ② Reverse of Right of Way for Transmission Lines, & Not to Exceed 30' From & Vol. 859 D.R. Pg. 281

8.09
8.27
16.36 Acres Total



- COUNTY FIELD DATA REFERENCE**
- 1/4" 1" Iron Pipe ICS 15310, or as noted.
 - Set 1" I.P. w/ Monterey Co. plug, or as noted.
 - Unmonumented Point
 - Corner Number as per Vol. 19 Sur Pg. 15
 - Corner Number as per Vol. 19 Sur Pg. 20
 - Easements per Vol. 19 Sur Pg. 15

BASIS OF BEARING
The Basis of Bearing used herein (N. 87° 45' 00" E) between found monuments as designated as point numbers 29 and 37 on the map filed in Volume 18 of Surveys at Page 15, Records of Monterey County, California

Field data are stored in the Survey Office under Job Name 080

L2020

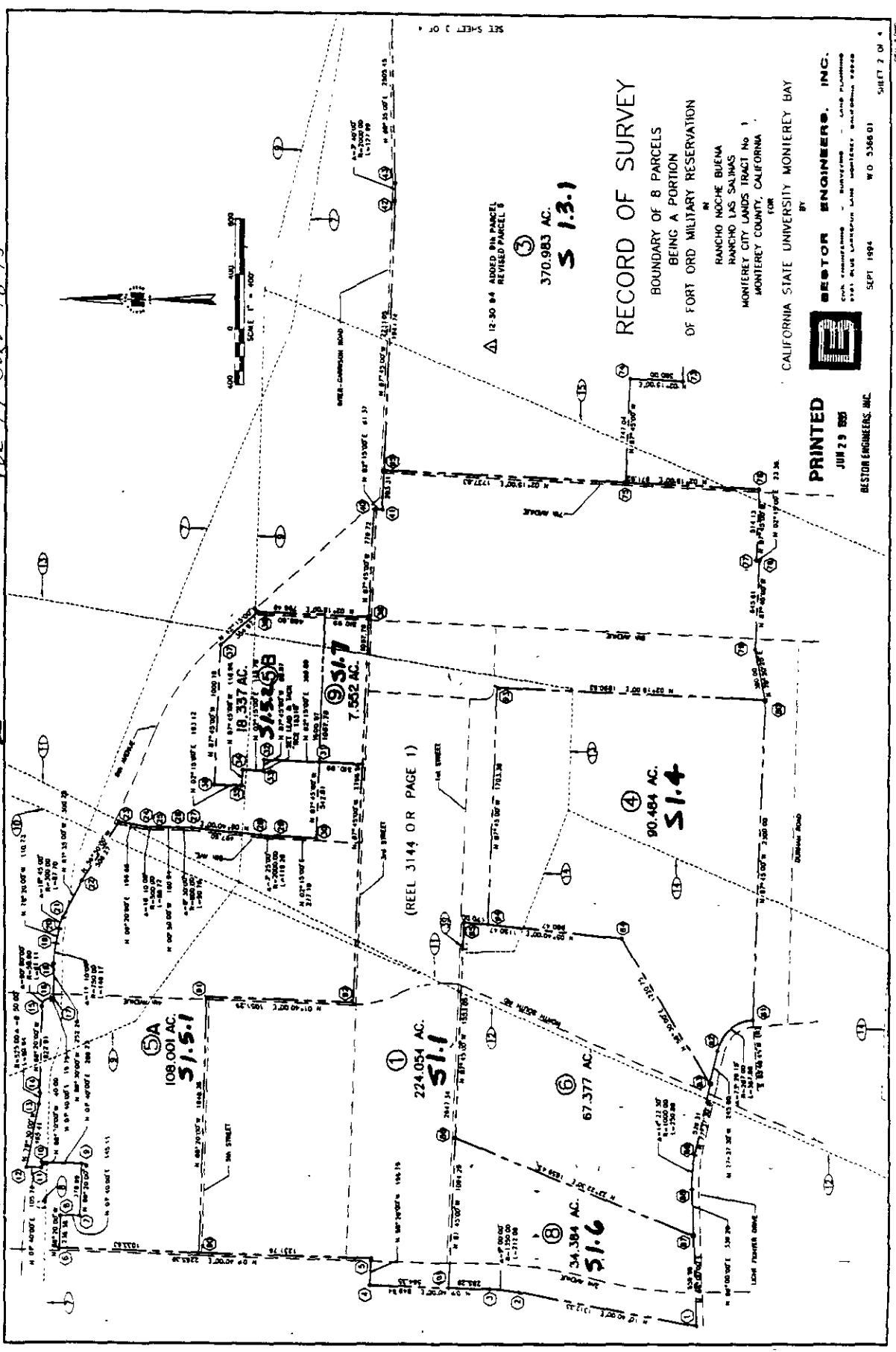
CSUMB
PARCELS 5
MONTEREY RECORDS PAGE 95

L2020

CSUMB
PARCELS 5
MONTEREY RECORDS PAGE 95

Vol 19 Surv Pg 15

51



RECORD OF SURVEY
 BOUNDARY OF 8 PARCELS
 BEING A PORTION
 OF FORT ORD MILITARY RESERVATION

RANCHO ROCHE BUENA
 RANCHO LAS SALINAS
 MONTEREY CITY LANDS TRACT No. 1
 MONTEREY COUNTY, CALIFORNIA
 FOR

CALIFORNIA STATE UNIVERSITY MONTEREY BAY

BY
BESTON ENGINEERS, INC.
 CIVIL ENGINEERS - SURVEYORS - LAND PLANNERS
 3701 PLUS UNIVERSITY LANE MONTEREY, CALIFORNIA 95063
 W.D. 3586 01
 SEPT 1994

PRINTED
 JUN 29 1995
 BESTON ENGINEERS, INC.

DISTRIBUTION

Environmental Baseline Survey
Main Garrison Parcels
Former Fort Ord, California

Version 1

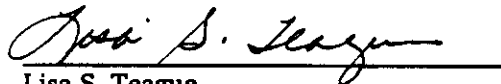
September 26, 1997

Copy No. 15

Copies 1 - 22: Mr. Dan McMindes
 Department of the Army
 Corps of Engineers
 Sacramento District
 1325 J Street
 Sacramento, California 95814-2922

Copies 23 - 27: Harding Lawson Associates

Quality Control Reviewer



Lisa S. Teague
Principal Geologist

RWB/SMF/LST/JC48708-F