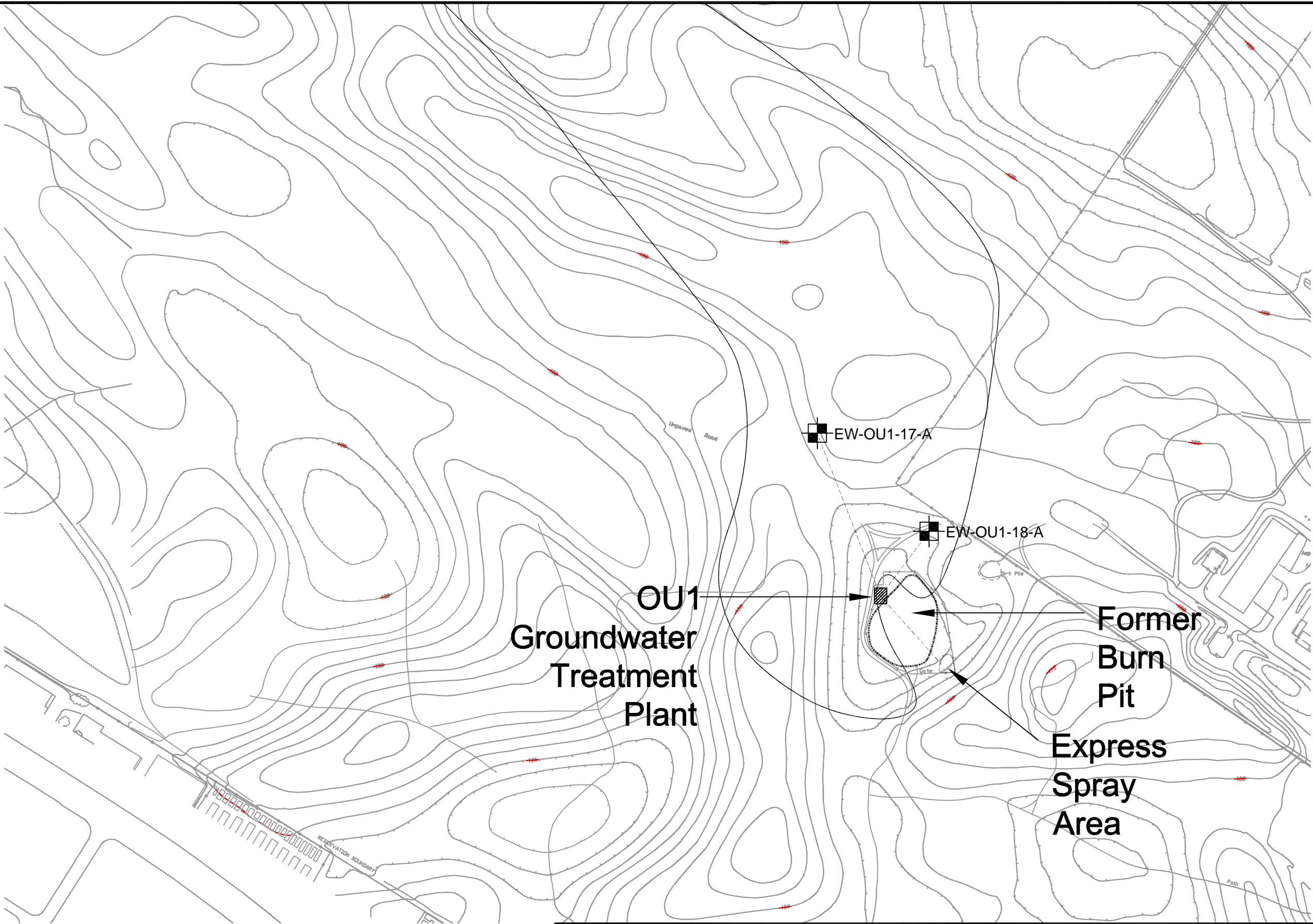




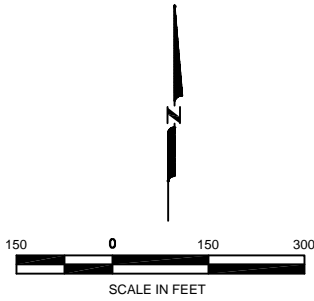


\\P062005\DATA\AHTNA\SERVER\FILES TO REVIEW\HUMAN HEALTH CONSULTING\GROUNDWATER\SITE-WATER CONTAMINATION REPORT\Figures\OU1 Plate 1 - OU1 Groundwater Extraction and Treatment System Layout.dwg, 1/22/2003 8:47:21 AM, Not User Permitted .pds



**EXPLANATION**

	EXTRACTION WELL
	GROUNDWATER TREATMENT PLANT
	COLLECTION PIPING
	EXTENT OF TCE PLUME



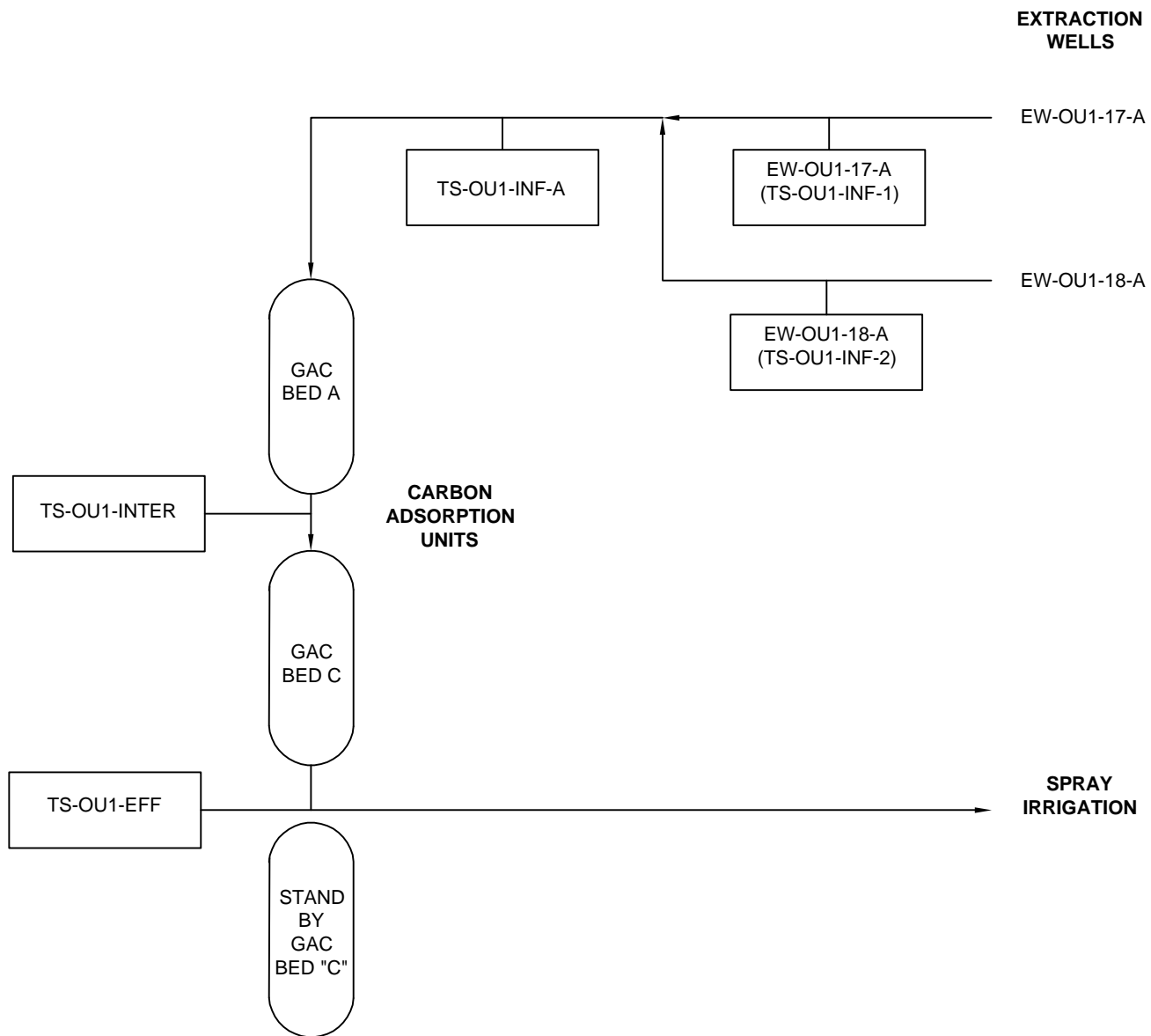
**AHTNA**  
  
Government Services Corporation

ANNUAL EVALUATION REPORT JANUARY THROUGH DECEMBER 2002 FORMER FORT ORD, CALIFORNIA			
PROJECT NO. 30034.10	DATE 03/25/03	DR. BY DQ	APP. BY SG

**PLATE 1**

**OU1 GROUNDWATER AND  
TREATMENT SYSTEM LAYOUT**

C:\42659-1\PA\_C\_Series\Environmental Consulting\Groundworks\AHTNA\F\Ord\AHT\001\Annual Report Figures\OU1\Plate 2 OU1 Extraction and Treatment System Layout.dwg, 3/25/2003 9:40:52 AM



### EXPLANATION

GAC GRANULAR ACTIVATED CARBON

TS-OU1-EFF SAMPLE LOCATION/SAMPLE ID

GAC BED A TREATMENT UNIT

FLOW PATH

REF: HARDING ESE, 2001

**AHTNA**

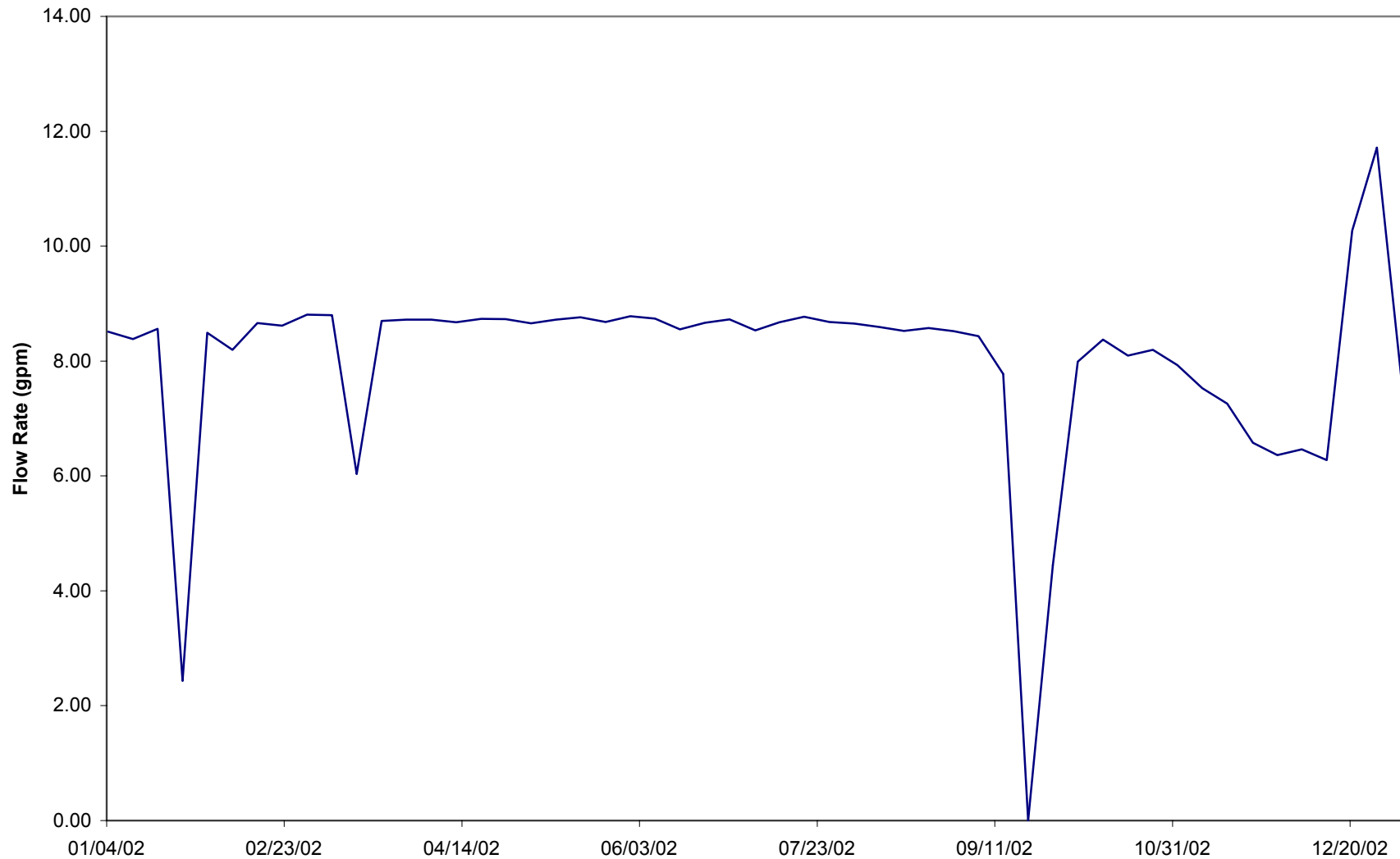
Government Services Corporation

ANNUAL EVALUATION REPORT  
OU1 GROUNDWATER REMEDY  
JANUARY THROUGH DECEMBER 2002  
FORMER FORT ORD, CALIFORNIA

PROJECT NO.	DATE	DR. BY	APP. BY
30034.10	03/11/03	DQ	SG

**PLATE 2**  
**OU 1 GROUNDWATER TREATMENT SCHEMATIC**

**Plate 3. OU 1 System Flow Rate, January - December 2002**  
**Annual Evaluation Report**  
**January through December 2002**  
**OU 1 Groundwater Remedy**  
**Former Fort Ord, California**



**Plate 4. OU 1 Influent COC Concentrations, January - December 2002**

**Annual Evaluation Report  
January through December 2002  
OU 1 Groundwater Remedy  
Former Fort Ord, California**



**Plate 5. OU 1 Cumulative COC Mass Removed, July 1988 - December 2002**

**Annual Evaluation Report  
January through December 2002  
OU 1 Groundwater Remedy  
Former Fort Ord, California**

