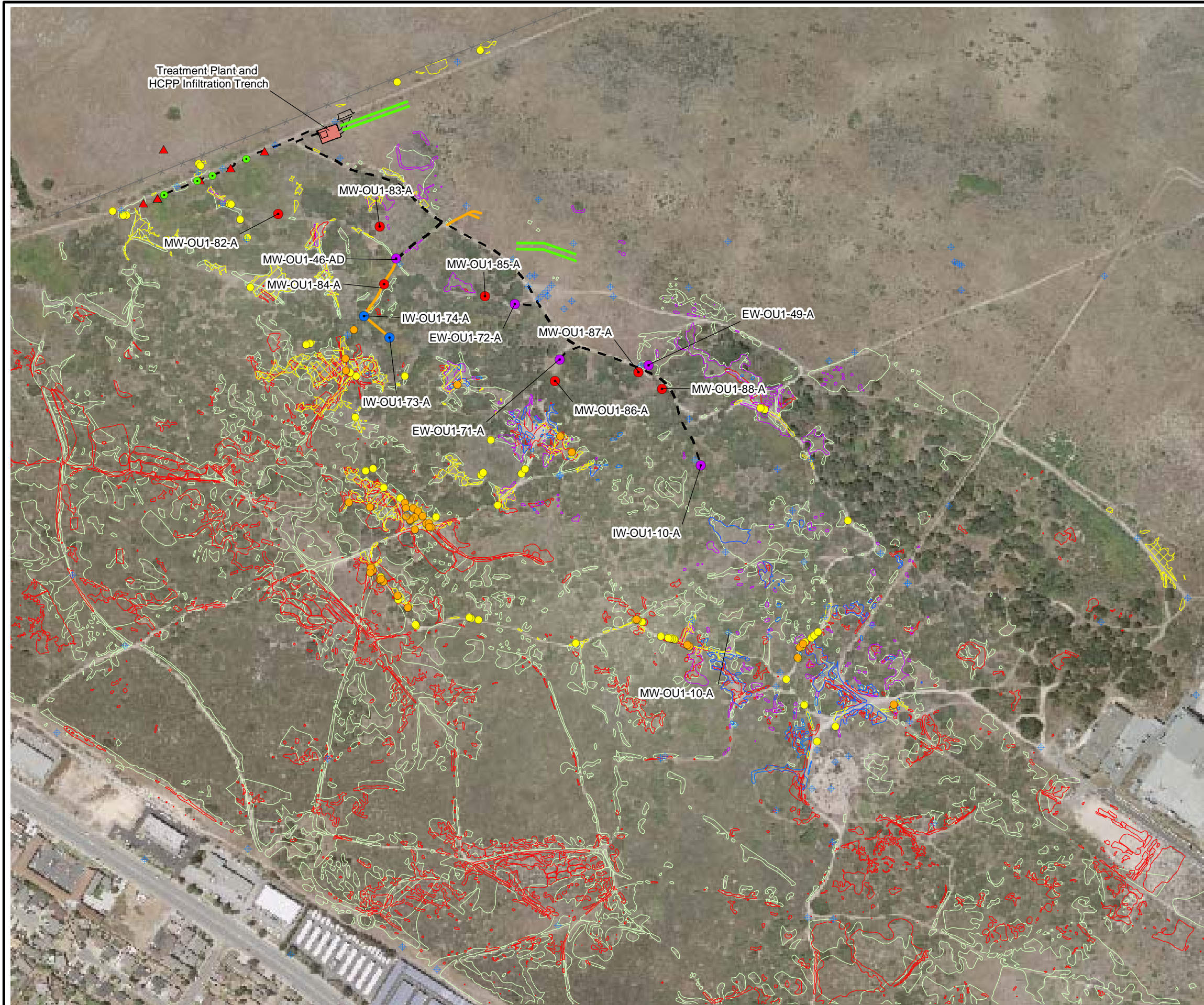
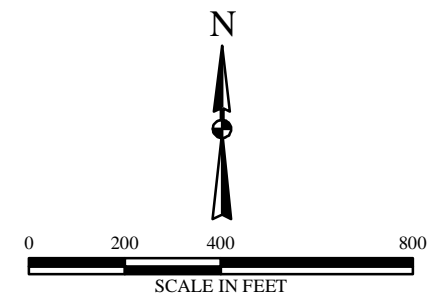


**Figure 4.2**  
**Summary**  
**of Rare Plant Survey Results**  
**1998 - 2005**



**Legend**

- Extraction Pipeline Route
  - New Infiltration Trench
  - Treated Water Pipeline Route
  - ×—× Armstrong Ranch Fence
  - ⊕ Monitoring Well
  - Hydraulic Control Pilot Project Extraction Well
  - ▲ New Well for Hydraulic Control Pilot Project Performance Monitoring
  - FONR OU-1 New Monitoring Well
  - FONR OU-1 Extraction Well
  - FONR OU-1 Injection Well
- 1998 RARE PLANT SURVEY (University of California Santa Cruz)
- 1998 sand gilia
  - 1998 Monterey spineflower
- 2004 RARE PLANT SURVEY (CH2M Hill)
- Monterey spineflower
  - sand gilia
- 2005 RARE PLANT SURVEY (CH2M Hill)
- sand gilia
  - sand gilia
  - Monterey spineflower
  - Monterey spineflower - High Density
  - ▨ Monterey spineflower - Medium Density
  - ▧ Monterey spineflower - Sparse Density
  - ▩ Monterey spineflower - Very Sparse Density



X:/OMA009\_Ft\_Ord/TO\_201/Maps/FONR\_Impact\_2007/  
 98-05\_Plant\_Survey.mxd  
 Source: HydroGeoLogic, Inc., CH2M Hill  
 02/25/08 PD

