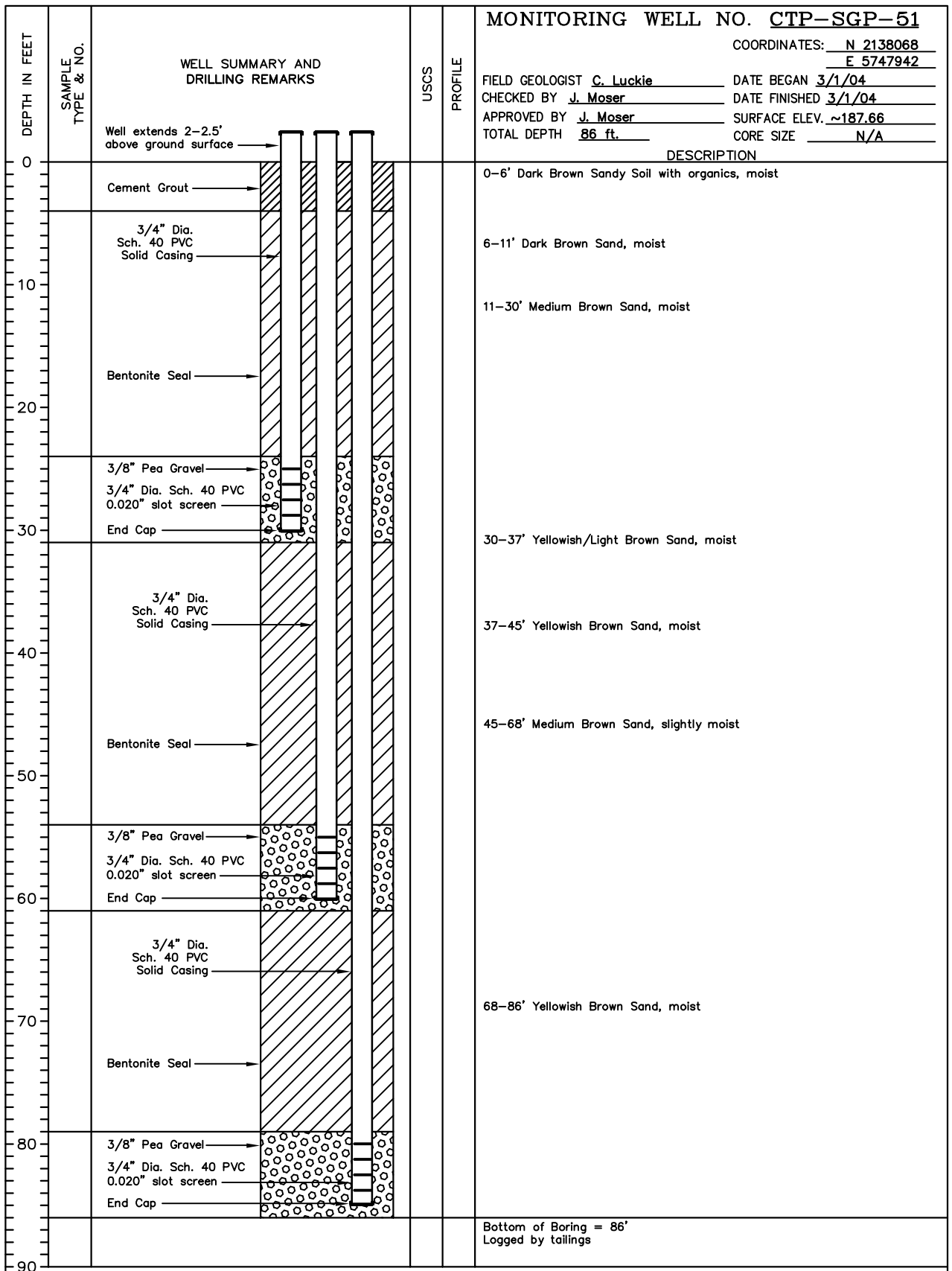


Appendix B
Well Logs

MONITORING WELL NO. CTP-SGP-51

COORDINATES: N 2138068
E 5747942

FIELD GEOLOGIST C. Luckie DATE BEGAN 3/1/04
CHECKED BY J. Moser DATE FINISHED 3/1/04
APPROVED BY J. Moser SURFACE ELEV. ~187.66
TOTAL DEPTH 86 ft. CORE SIZE N/A



DRILLING CO. : Woodward Drilling
DRILLING METHOD : 8" Hollow Stem Auger
LOCATION : CTP Site, Former Fort Ord, California
PROJECT NO. : 783751

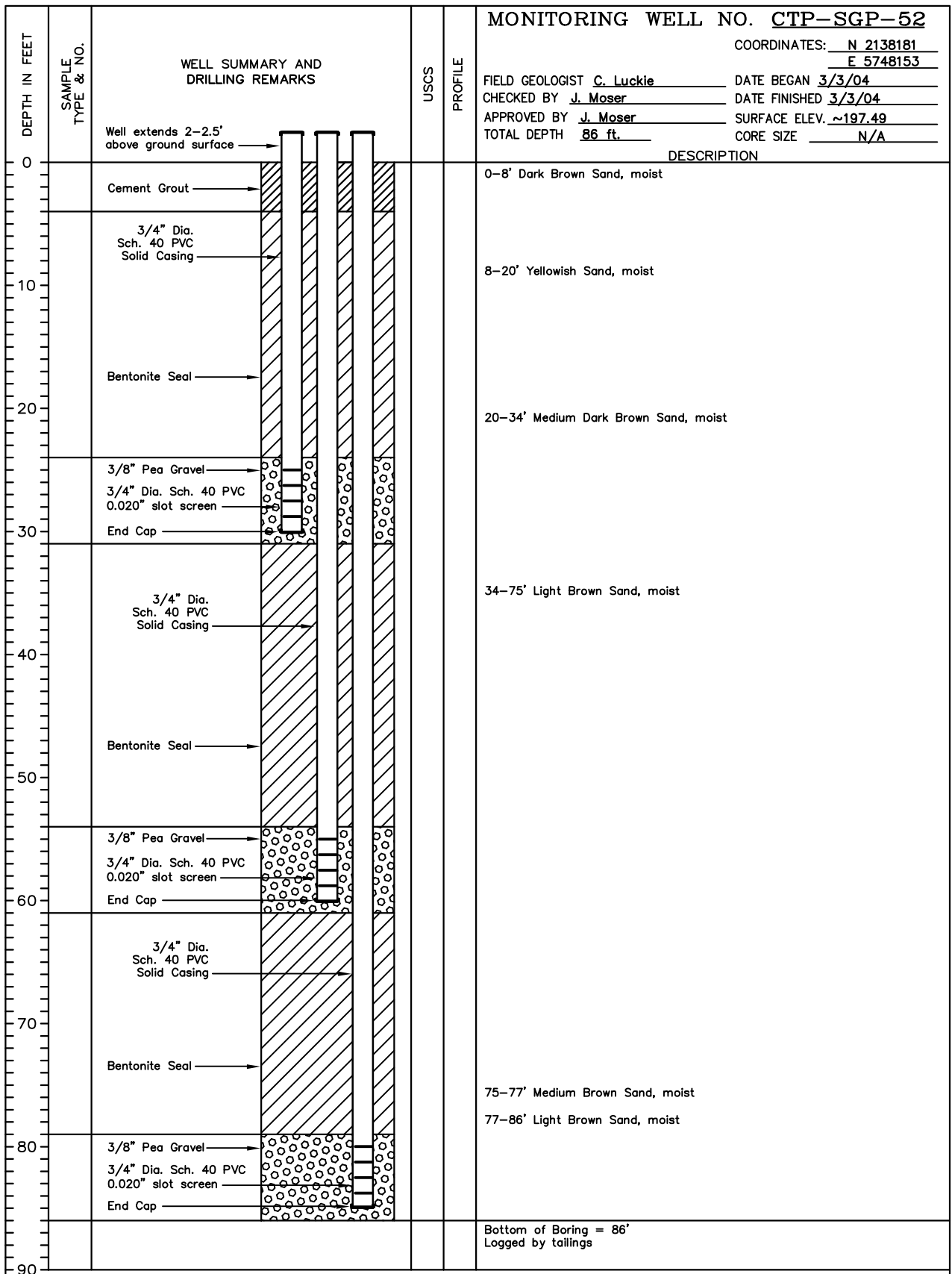
DRAWN BY	K. Black	CHECKED BY		FILE NAME & DISK NUMBER	CTP-SGP-51
DATE	6/1/04	APPROVED BY			



MONITORING WELL NO. CTP-SGP-52

COORDINATES: N 2138181
E 5748153

FIELD GEOLOGIST C. Luckie DATE BEGAN 3/3/04
CHECKED BY J. Moser DATE FINISHED 3/3/04
APPROVED BY J. Moser SURFACE ELEV. ~197.49
TOTAL DEPTH 86 ft. CORE SIZE N/A



DRILLING CO. : Woodward Drilling
 DRILLING METHOD : 8" Hollow Stem Auger
 LOCATION : CTP Site, Former Fort Ord, California
 PROJECT NO. : 783751

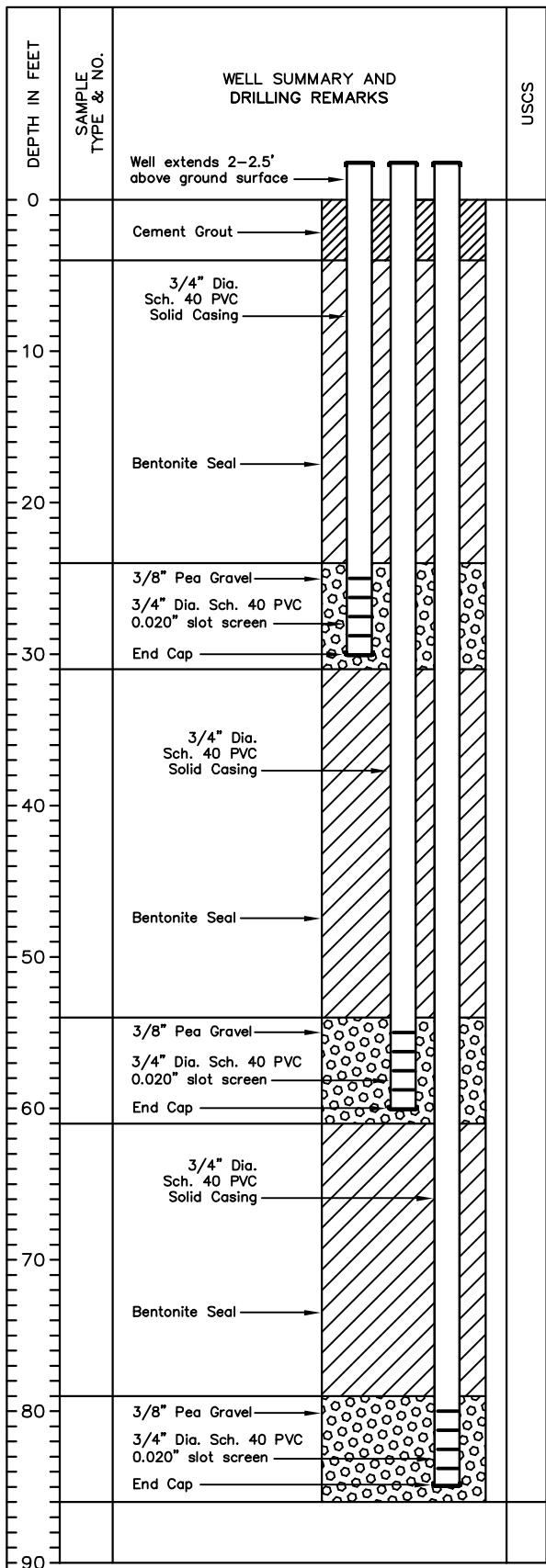
DRAWN BY	K. Black	CHECKED BY		FILE NAME & DISK NUMBER	CTP-SGP-52
DATE	6/1/04	APPROVED BY			



MONITORING WELL NO. CTP-SGP-53

COORDINATES: N 2138233
E 5748356

FIELD GEOLOGIST C. Luckie DATE BEGAN 3/4/04
CHECKED BY J. Moser DATE FINISHED 3/4/04
APPROVED BY J. Moser SURFACE ELEV. ~189.06
TOTAL DEPTH 86 ft. CORE SIZE N/A



USCS	PROFILE	DESCRIPTION
		0-8' Dark Brown Sand with organics, moist
		8-11' Yellowish Sand, moist
		11-14' Medium Brown Sand, moist
		14-16' Light Brown Sand, moist
		16-18' Medium Light Brown Sand, moist
		18-30' Light Brown Sand, moist
		30-34' Medium Dark Brown Sand, moist
		34-45' Medium Brown Sand, moist
		45-86' Light Brown Sand, moist
		Bottom of Boring = 86' Logged by tailings

DRILLING CO. : Woodward Drilling
DRILLING METHOD : 8" Hollow Stem Auger
LOCATION : CTP Site, Former Fort Ord, California
PROJECT NO. : 783751

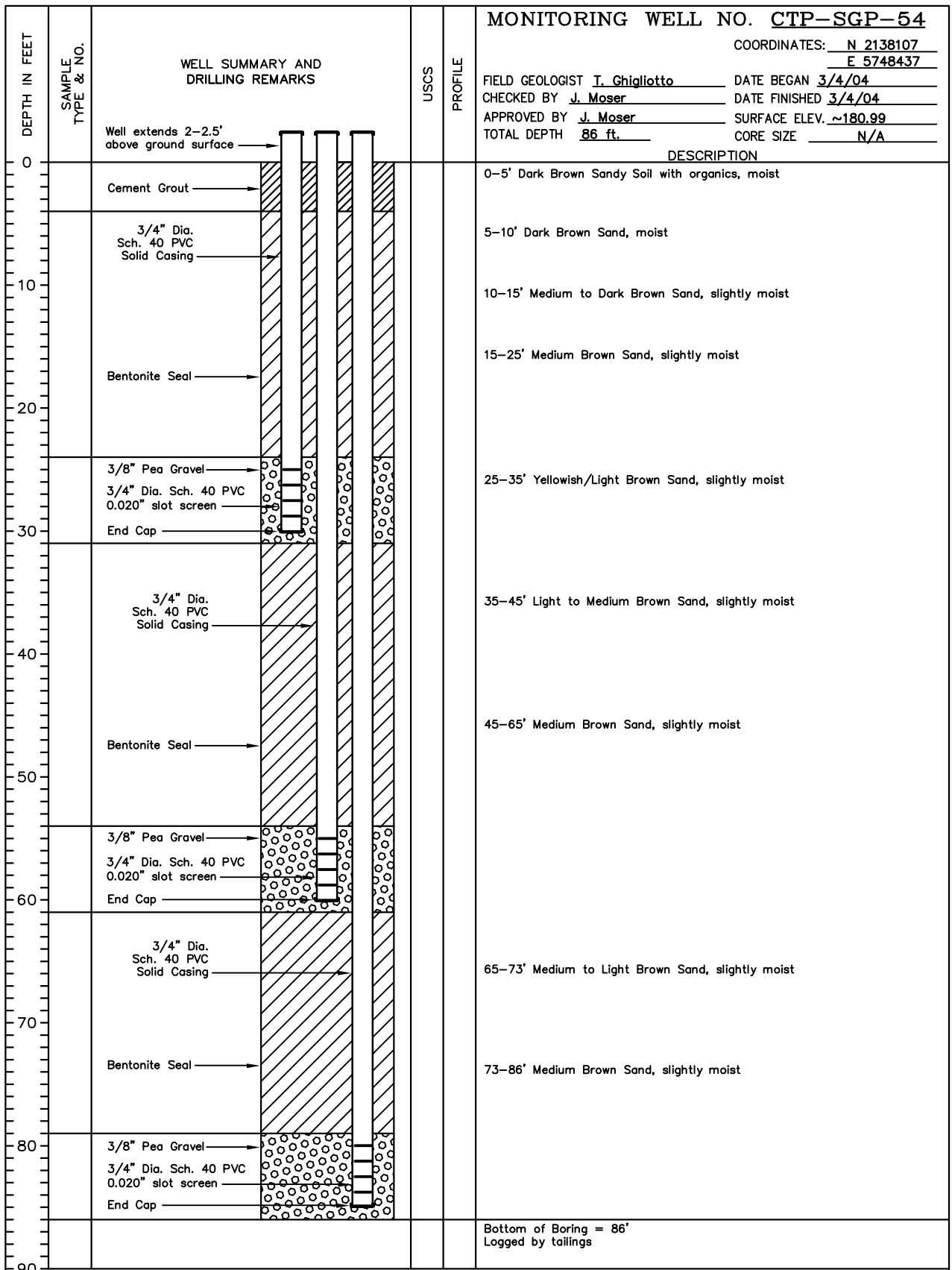
DRAWN BY	K. Black	CHECKED BY		FILE NAME & DISK NUMBER	CTP-SGP-53
DATE	6/1/04	APPROVED BY			



MONITORING WELL NO. CTP-SGP-54

COORDINATES: N 2138107
E 5748437

FIELD GEOLOGIST I. Chigliotto DATE BEGAN 3/4/04
CHECKED BY J. Moser DATE FINISHED 3/4/04
APPROVED BY J. Moser SURFACE ELEV. ~180.99
TOTAL DEPTH 86 ft. CORE SIZE N/A



DRILLING CO. : Woodward Drilling
DRILLING METHOD : 8" Hollow Stem Auger
LOCATION : CTP Site, Former Fort Ord, California
PROJECT NO. : 783751

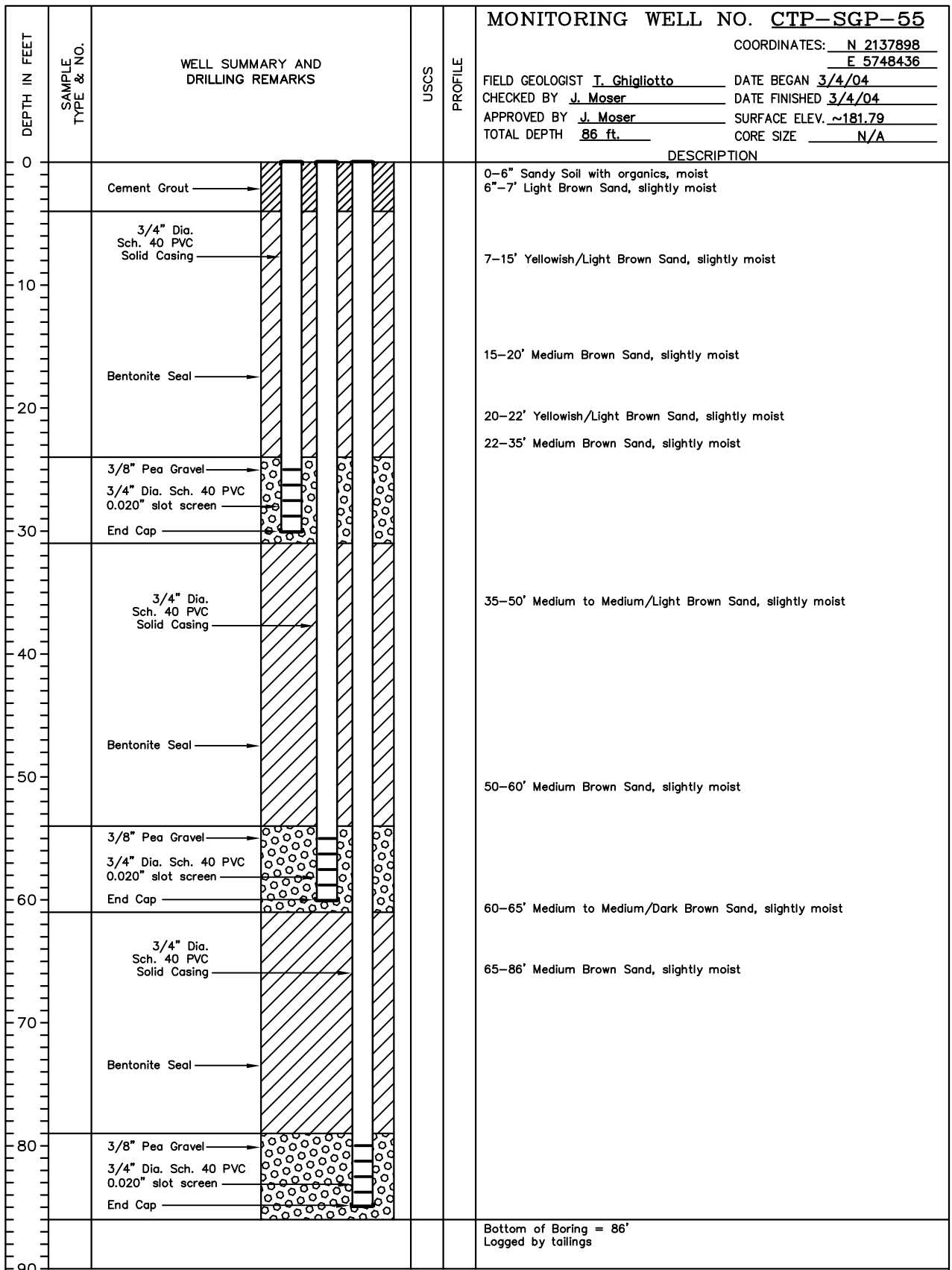
DRAWN BY	K. Black	CHECKED BY		FILE NAME & DISK NUMBER	CTP-SGP-54
DATE	6/1/04	APPROVED BY			



MONITORING WELL NO. CTP-SGP-55

COORDINATES: N 2137898
E 5748436

FIELD GEOLOGIST I. Chigliotto DATE BEGAN 3/4/04
CHECKED BY J. Moser DATE FINISHED 3/4/04
APPROVED BY J. Moser SURFACE ELEV. ~181.79
TOTAL DEPTH 86 ft. CORE SIZE N/A



DRILLING CO. : Woodward Drilling
DRILLING METHOD : 8" Hollow Stem Auger
LOCATION : CTP Site, Former Fort Ord, California
PROJECT NO. : 783751

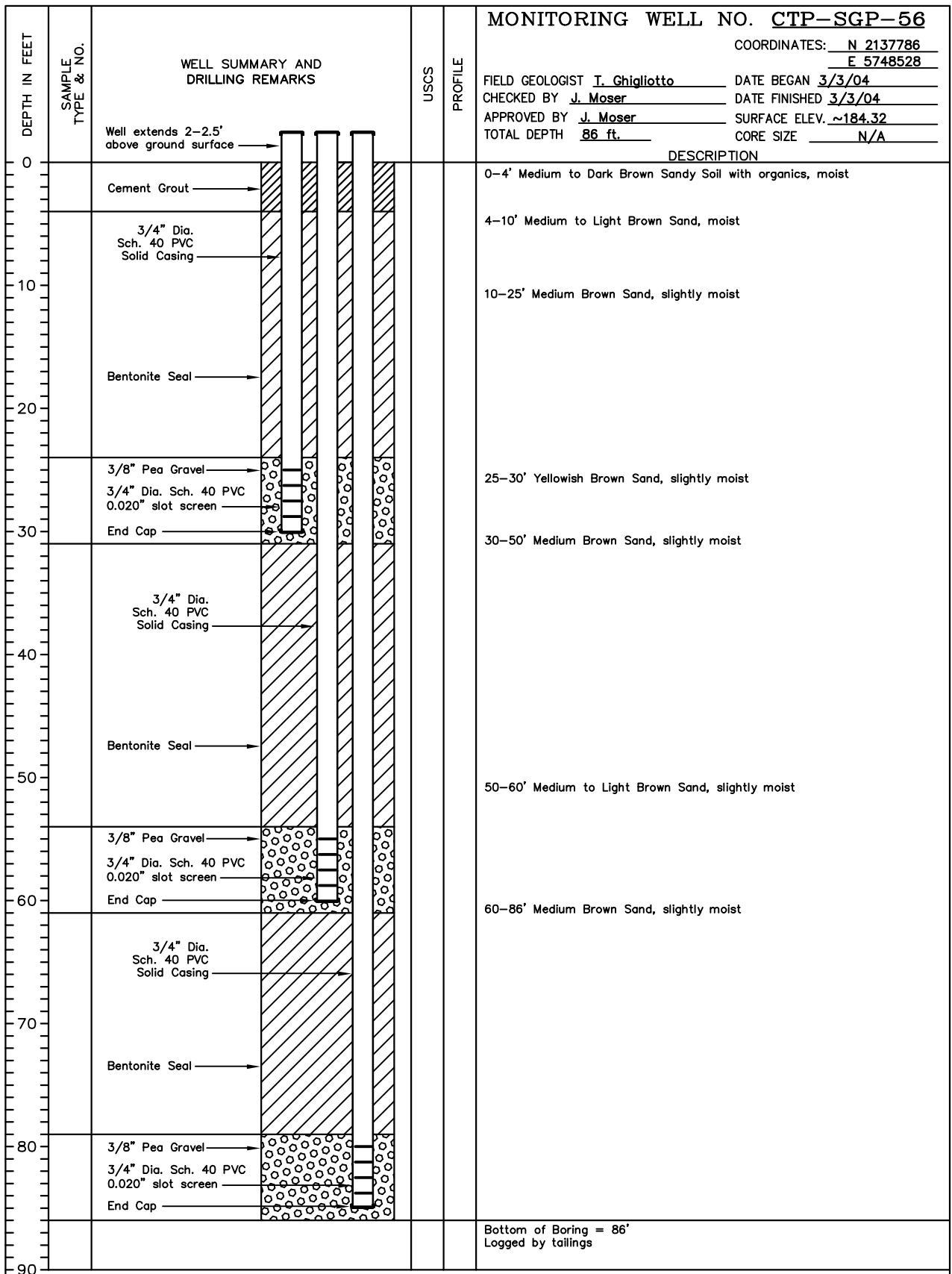
DRAWN BY	K. Black	CHECKED BY		FILE NAME & DISK NUMBER	CTP-SGP-55
DATE	6/1/04	APPROVED BY			



MONITORING WELL NO. CTP-SGP-56

COORDINATES: N 2137786
E 5748528

FIELD GEOLOGIST I. Chigliotto DATE BEGAN 3/3/04
CHECKED BY J. Moser DATE FINISHED 3/3/04
APPROVED BY J. Moser SURFACE ELEV. ~184.32
TOTAL DEPTH 86 ft. CORE SIZE N/A



DRILLING CO. : Woodward Drilling
DRILLING METHOD : 8" Hollow Stem Auger
LOCATION : CTP Site, Former Fort Ord, California
PROJECT NO. : 783751

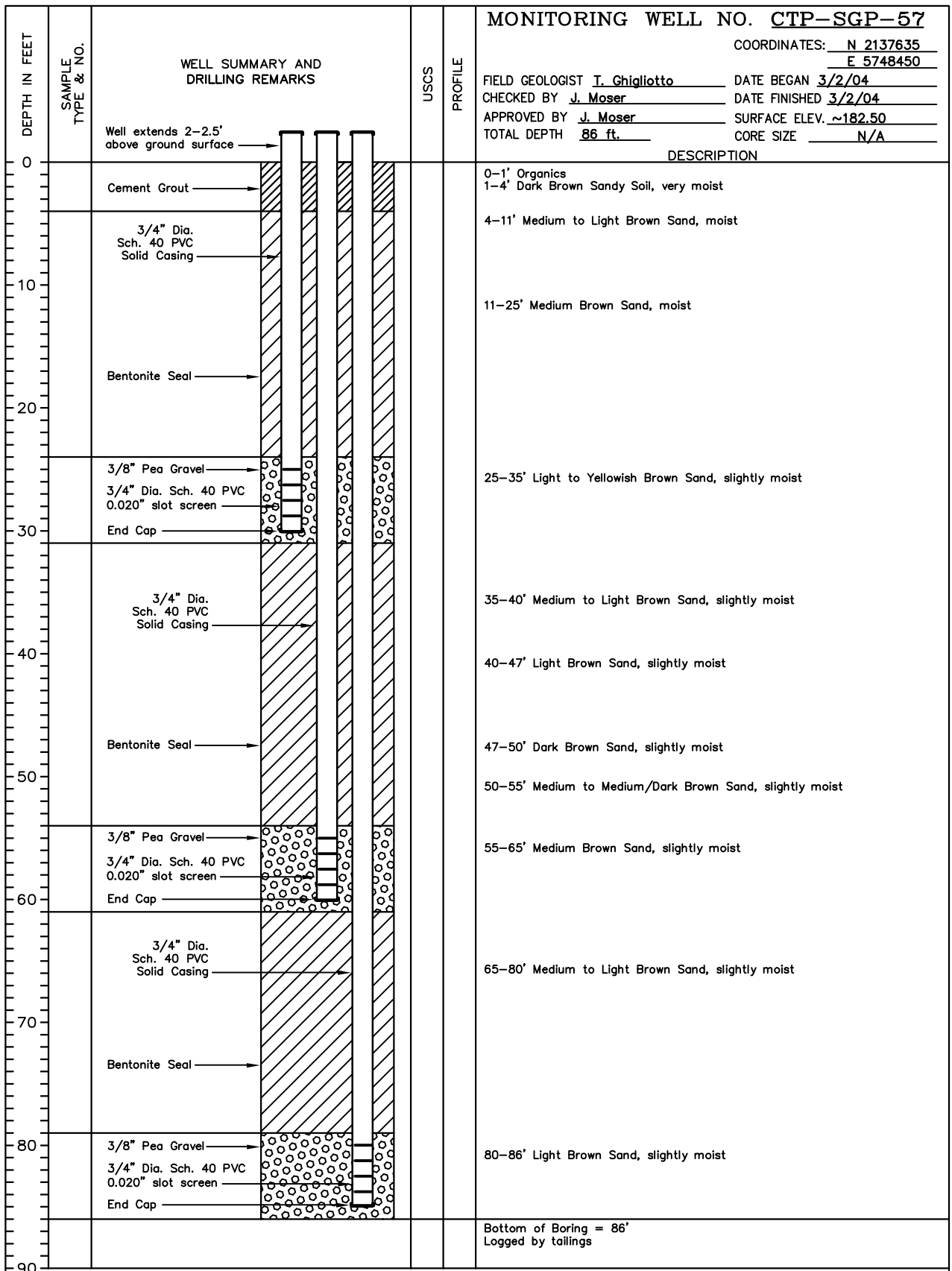
DRAWN BY	K. Black	CHECKED BY		FILE NAME & DISK NUMBER	CTP-SGP-56
DATE	6/1/04	APPROVED BY			



MONITORING WELL NO. CTP-SGP-57

COORDINATES: N 2137635
E 5748450

FIELD GEOLOGIST I. Chigliotto DATE BEGAN 3/2/04
CHECKED BY J. Moser DATE FINISHED 3/2/04
APPROVED BY J. Moser SURFACE ELEV. ~182.50
TOTAL DEPTH 86 ft. CORE SIZE N/A



DRILLING CO. : Woodward Drilling
DRILLING METHOD : 8" Hollow Stem Auger
LOCATION : CTP Site, Former Fort Ord, California
PROJECT NO. : 783751

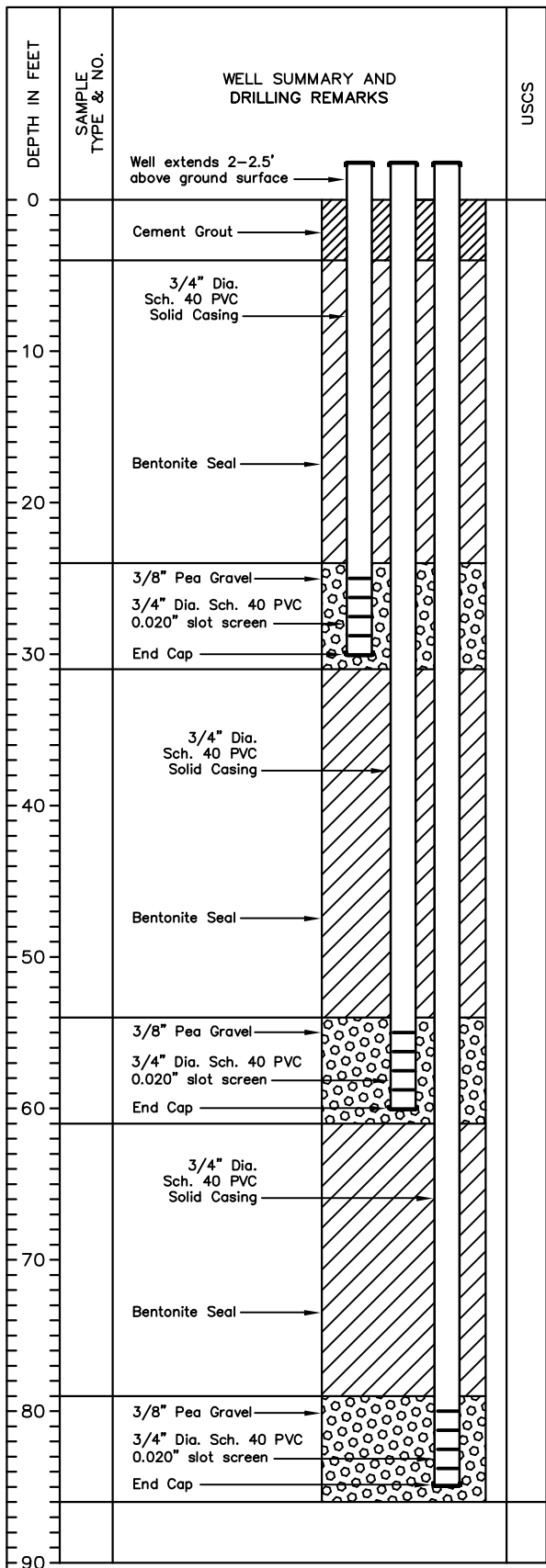
DRAWN BY	K. Black	CHECKED BY		FILE NAME & DISK NUMBER	CTP-SGP-57
DATE	6/1/04	APPROVED BY			



MONITORING WELL NO. CTP-SGP-58

COORDINATES: N 2137615
E 5748299

FIELD GEOLOGIST I. Ghigliotto DATE BEGAN 3/2/04
CHECKED BY J. Moser DATE FINISHED 3/2/04
APPROVED BY J. Moser SURFACE ELEV. ~185.72
TOTAL DEPTH 86 ft. CORE SIZE N/A



DEPTH IN FEET	SAMPLE TYPE & NO.	WELL SUMMARY AND DRILLING REMARKS	USCS	PROFILE	DESCRIPTION
0		Well extends 2-2.5' above ground surface			0-2' Light Brown Sand, slightly moist
0-2		Cement Grout			2-25' Medium Brown Sand, slightly moist
2-25		3/4" Dia. Sch. 40 PVC Solid Casing			
25-35		Bentonite Seal			25-35' Yellowish Brown Sand, slightly moist
35-60		3/8" Pea Gravel			
35-60		3/4" Dia. Sch. 40 PVC 0.020" slot screen			35-60' Medium to Light Brown Sand, slightly moist
35-60		End Cap			
60-86		3/4" Dia. Sch. 40 PVC Solid Casing			60-86' Medium Brown Sand, slightly moist
60-86		Bentonite Seal			
86-90		3/8" Pea Gravel			
86-90		3/4" Dia. Sch. 40 PVC 0.020" slot screen			
86-90		End Cap			
86-90					Bottom of Boring = 86' Logged by tailings

DRILLING CO. : Woodward Drilling
DRILLING METHOD : 8" Hollow Stem Auger
LOCATION : CTP Site, Former Fort Ord, California
PROJECT NO. : 783751

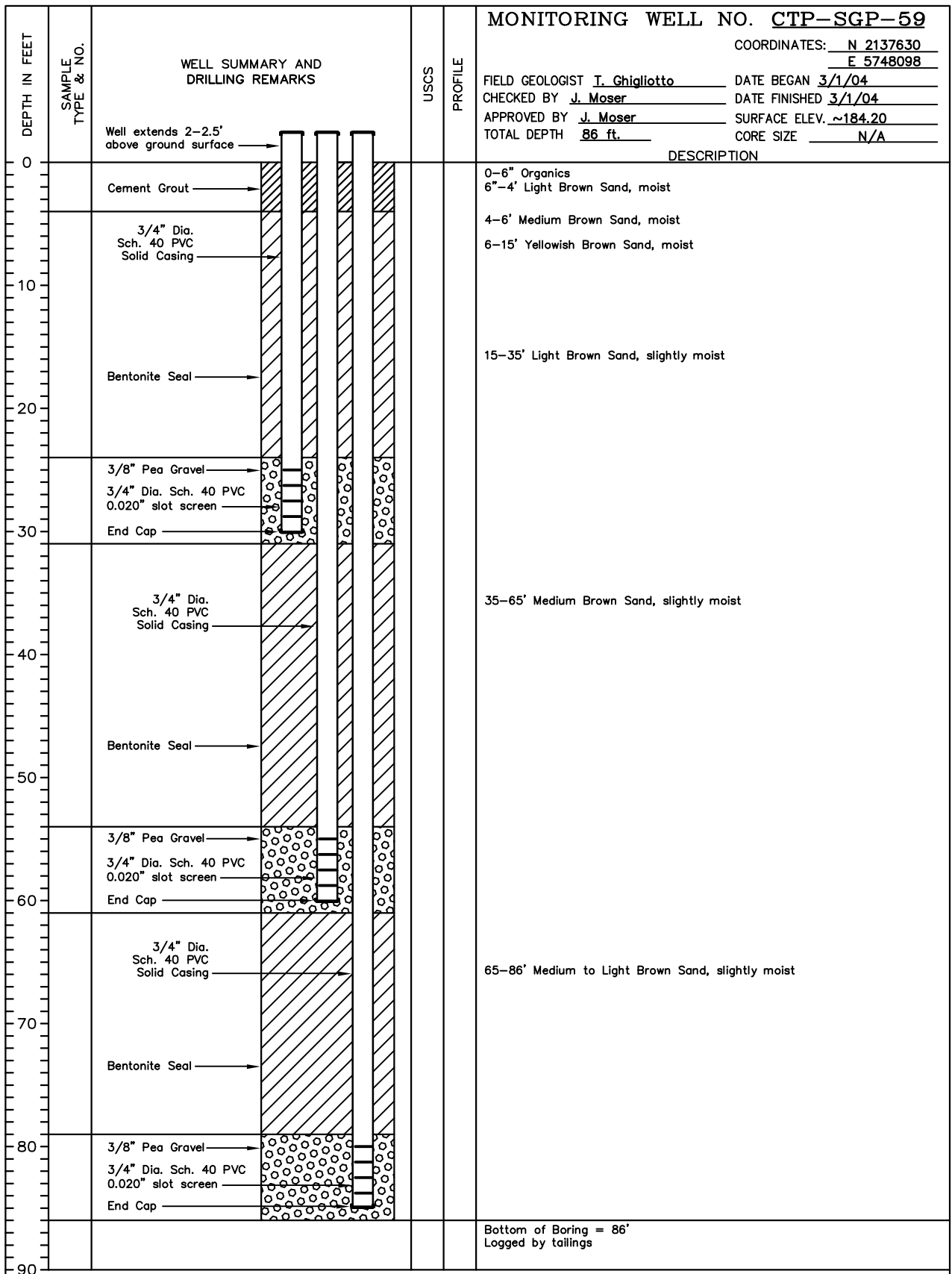
DRAWN BY	K. Black	CHECKED BY		FILE NAME & DISK NUMBER	CTP-SGP-58
DATE	6/1/04	APPROVED BY			



MONITORING WELL NO. CTP-SGP-59

COORDINATES: N 2137630
E 5748098

FIELD GEOLOGIST I. Ghigliotto DATE BEGAN 3/1/04
CHECKED BY J. Moser DATE FINISHED 3/1/04
APPROVED BY J. Moser SURFACE ELEV. ~184.20
TOTAL DEPTH 86 ft. CORE SIZE N/A



DESCRIPTION

0-6" Organics
6"-4' Light Brown Sand, moist
4-6' Medium Brown Sand, moist
6-15' Yellowish Brown Sand, moist
15-35' Light Brown Sand, slightly moist
35-65' Medium Brown Sand, slightly moist
65-86' Medium to Light Brown Sand, slightly moist
Bottom of Boring = 86'
Logged by tailings

DRILLING CO. : Woodward Drilling
DRILLING METHOD : 8" Hollow Stem Auger
LOCATION : CTP Site, Former Fort Ord, California
PROJECT NO. : 783751

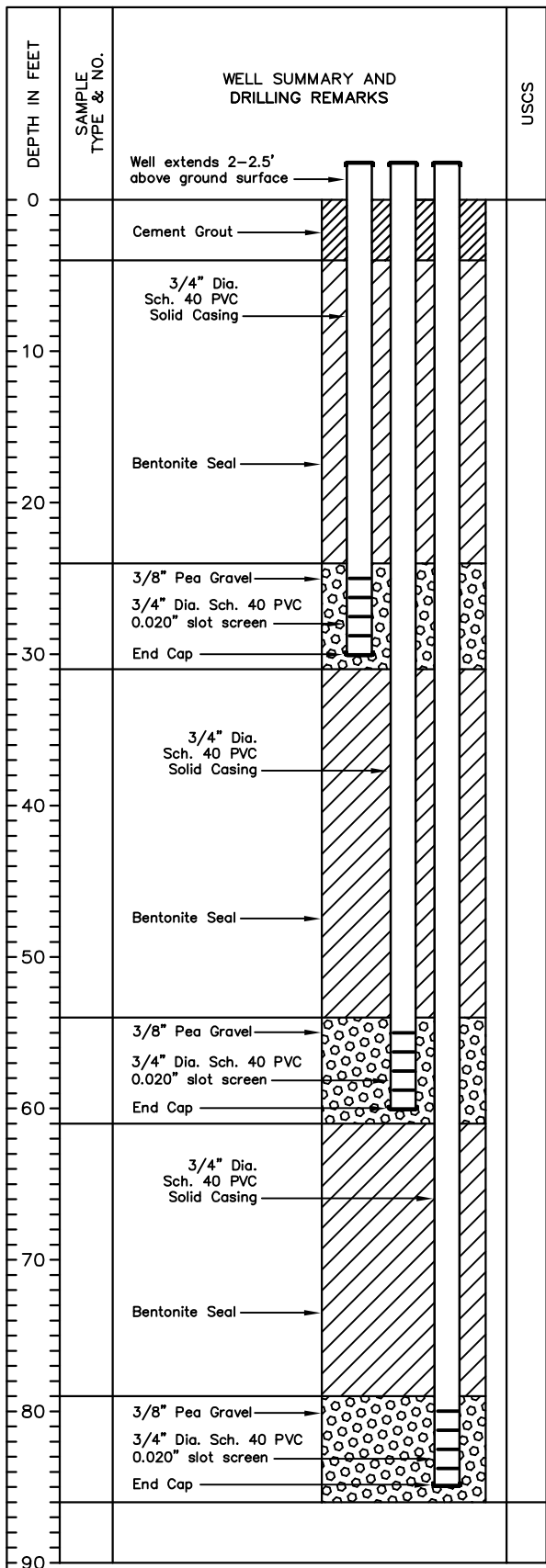
DRAWN BY	K. Black	CHECKED BY		FILE NAME & DISK NUMBER	CTP-SGP-59
DATE	6/1/04	APPROVED BY			



MONITORING WELL NO. CTP-SGP-60

COORDINATES: N 2137853
E 5748036

FIELD GEOLOGIST I. Chigliotto DATE BEGAN 3/5/04
CHECKED BY J. Moser DATE FINISHED 3/5/04
APPROVED BY J. Moser SURFACE ELEV. ~184.77
TOTAL DEPTH 86 ft. CORE SIZE N/A



DEPTH IN FEET	SAMPLE TYPE & NO.	WELL SUMMARY AND DRILLING REMARKS	USCS	PROFILE	DESCRIPTION
0		Well extends 2-2.5' above ground surface			0-3' Dark Brown Sandy Soil with organics, moist
3		Cement Grout			3-6' Dark Brown Sand, moist
6		3/4" Dia. Sch. 40 PVC Solid Casing			6-10' Medium Brown Sand, slightly moist
10					10-15' Medium to Light Brown Sand, slightly moist
15		Bentonite Seal			15-22' Yellowish Brown Sand, slightly moist
22					22-50' Medium to Light Brown Sand, slightly moist
25		3/8" Pea Gravel			
26		3/4" Dia. Sch. 40 PVC 0.020" slot screen			
27		End Cap			
30					
35		3/4" Dia. Sch. 40 PVC Solid Casing			
45		Bentonite Seal			
50					50-75' Medium Brown Sand, slightly moist
55		3/8" Pea Gravel			
56		3/4" Dia. Sch. 40 PVC 0.020" slot screen			
57		End Cap			
60					
65		3/4" Dia. Sch. 40 PVC Solid Casing			
75		Bentonite Seal			
75					75-86' Medium to Light Brown Sand, slightly moist
80		3/8" Pea Gravel			
81		3/4" Dia. Sch. 40 PVC 0.020" slot screen			
82		End Cap			
86					Bottom of Boring = 86' Logged by tailings

DRILLING CO. : Woodward Drilling
 DRILLING METHOD : 8" Hollow Stem Auger
 LOCATION : CTP Site, Former Fort Ord, California
 PROJECT NO. : 783751

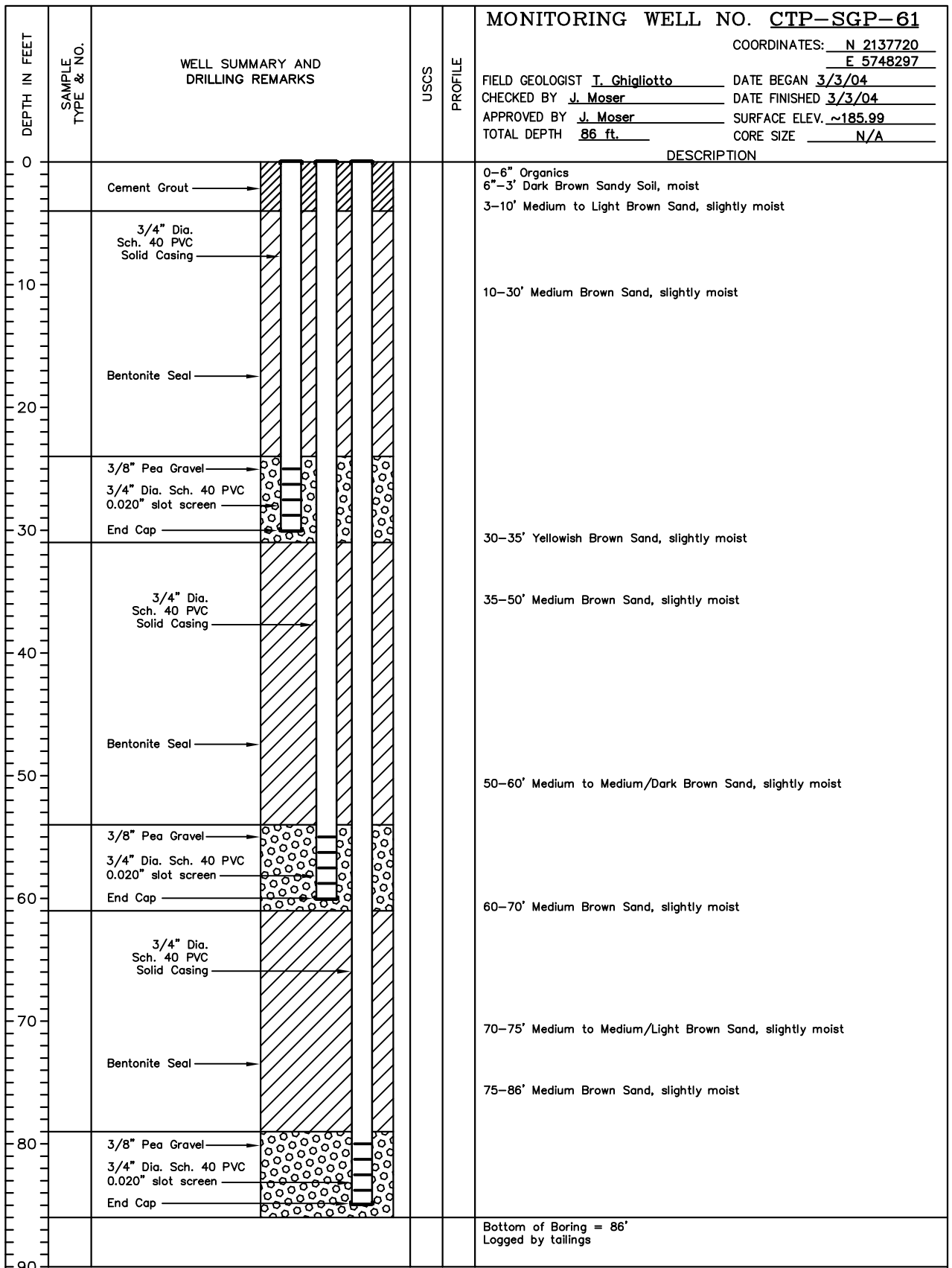
DRAWN BY	K. Black	CHECKED BY		FILE NAME & DISK NUMBER	CTP-SGP-60
DATE	6/1/04	APPROVED BY			



MONITORING WELL NO. CTP-SGP-61

COORDINATES: N 2137720
E 5748297

FIELD GEOLOGIST I. Chigliotto DATE BEGAN 3/3/04
CHECKED BY J. Moser DATE FINISHED 3/3/04
APPROVED BY J. Moser SURFACE ELEV. ~185.99
TOTAL DEPTH 86 ft. CORE SIZE N/A



DRILLING CO. : Woodward Drilling
DRILLING METHOD : 8" Hollow Stem Auger
LOCATION : CTP Site, Former Fort Ord, California
PROJECT NO. : 783751

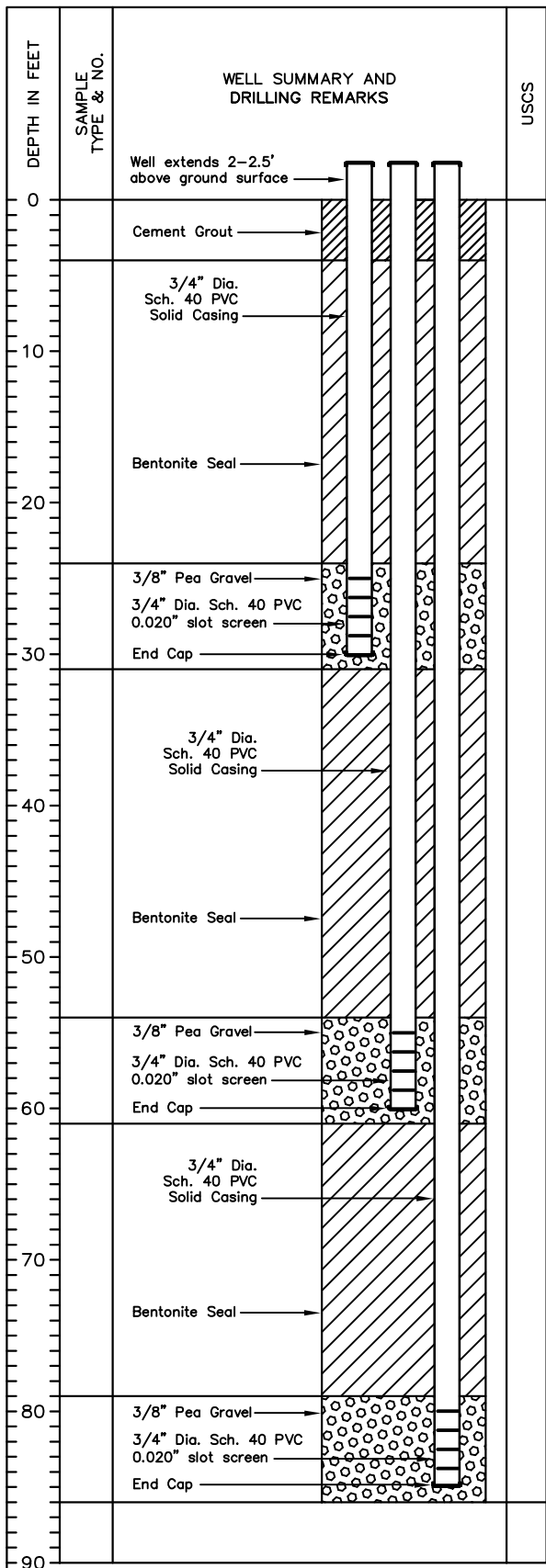
DRAWN BY	K. Black	CHECKED BY		FILE NAME & DISK NUMBER	CTP-SGP-61
DATE	6/1/04	APPROVED BY			



MONITORING WELL NO. CTP-SGP-62

COORDINATES: N 2137960
E 5748252

FIELD GEOLOGIST C. Luckie DATE BEGAN 3/4/04
CHECKED BY J. Moser DATE FINISHED 3/5/04
APPROVED BY J. Moser SURFACE ELEV. ~189.00
TOTAL DEPTH 86 ft. CORE SIZE N/A



USCS PROFILE	DESCRIPTION
	0-3' Dark Brown Sandy Soil with organics, moist
	3-6' Dark Brown Sand, moist
	6-10' Medium to Dark Brown Sand, moist
	10-30' Medium Brown Sand, slightly moist
	30-35' Medium Light Brown Sand, slightly moist
	35-38' Medium Brown Sand, moist
	38-47' Yellowish Brown Sand, slightly moist
	47-51' Medium Brown Sand, slightly moist
	51-55' Light Brown Sand, slightly moist
	55-58' Medium to Dark Brown Sand, slightly moist
	58-86' Yellowish Brown Sand, slightly moist
	Bottom of Boring = 86' Logged by tailings

DRILLING CO. : Woodward Drilling
DRILLING METHOD : 8" Hollow Stem Auger
LOCATION : CTP Site, Former Fort Ord, California
PROJECT NO. : 783751

DRAWN BY	K. Black	CHECKED BY		FILE NAME & DISK NUMBER	CTP-SGP-62
DATE	6/1/04	APPROVED BY			



MONITORING WELL NO. CTP-SGP-63

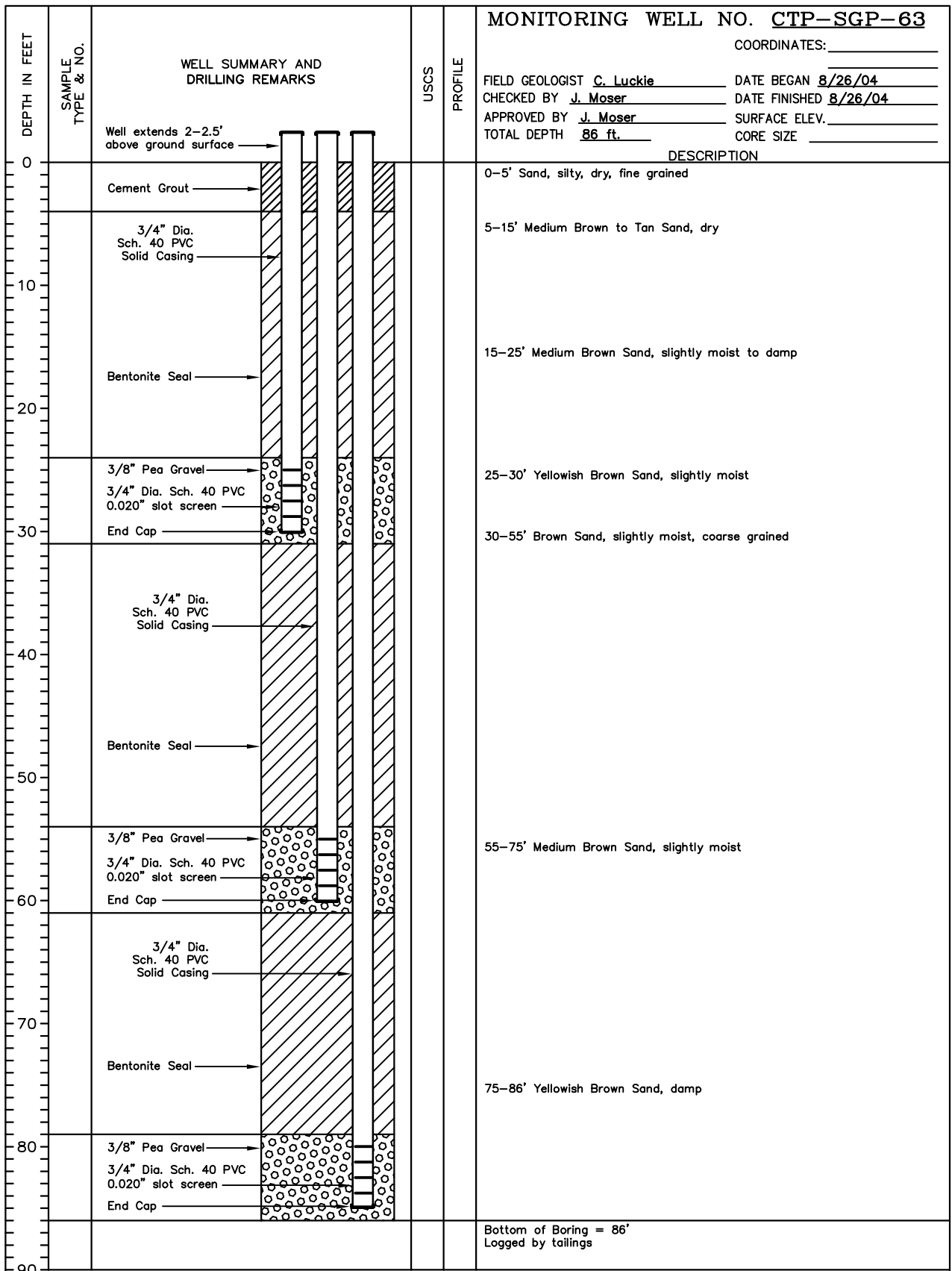
COORDINATES: _____

FIELD GEOLOGIST C. Luckie DATE BEGAN 8/26/04

CHECKED BY J. Moser DATE FINISHED 8/26/04

APPROVED BY J. Moser SURFACE ELEV. _____

TOTAL DEPTH 86 ft. CORE SIZE _____



DRILLING CO. : Woodward Drilling
 DRILLING METHOD : 8" Hollow Stem Auger
 LOCATION : CTP Site, Former Fort Ord, California
 PROJECT NO. : 783751

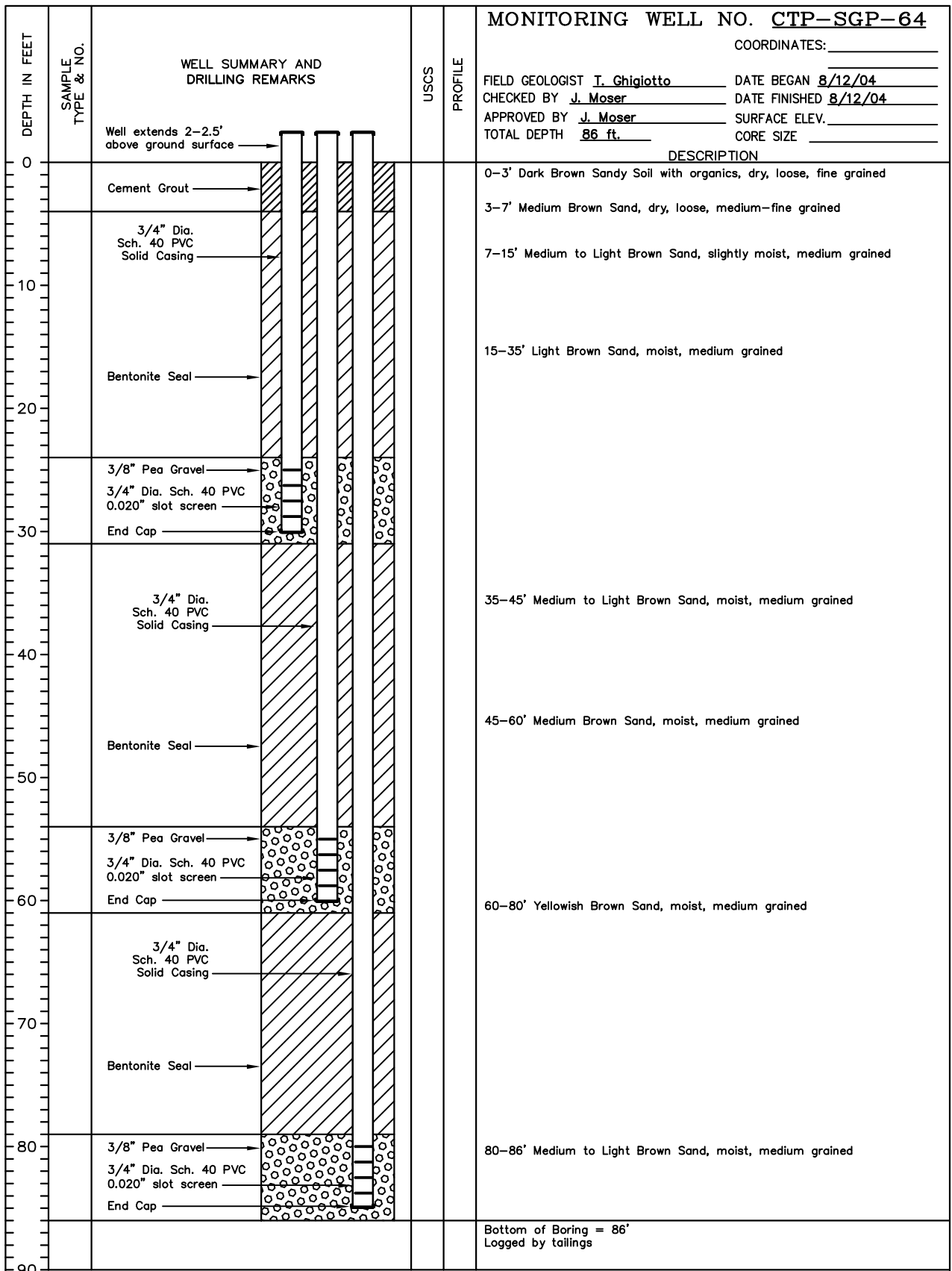
DRAWN BY	K. Black	CHECKED BY		FILE NAME & DISK NUMBER	CTP-SGP-63
DATE	9/15/04	APPROVED BY			



MONITORING WELL NO. CTP-SGP-64

COORDINATES: _____

FIELD GEOLOGIST I. Chigiotto DATE BEGAN 8/12/04
 CHECKED BY J. Moser DATE FINISHED 8/12/04
 APPROVED BY J. Moser SURFACE ELEV. _____
 TOTAL DEPTH 86 ft. CORE SIZE _____



DESCRIPTION

0-3' Dark Brown Sandy Soil with organics, dry, loose, fine grained

3-7' Medium Brown Sand, dry, loose, medium-fine grained

7-15' Medium to Light Brown Sand, slightly moist, medium grained

15-35' Light Brown Sand, moist, medium grained

35-45' Medium to Light Brown Sand, moist, medium grained

45-60' Medium Brown Sand, moist, medium grained

60-80' Yellowish Brown Sand, moist, medium grained

80-86' Medium to Light Brown Sand, moist, medium grained

Bottom of Boring = 86'
 Logged by tailings

DRILLING CO. : Woodward Drilling
 DRILLING METHOD : 8" Hollow Stem Auger
 LOCATION : CTP Site, Former Fort Ord, California
 PROJECT NO. : 783751

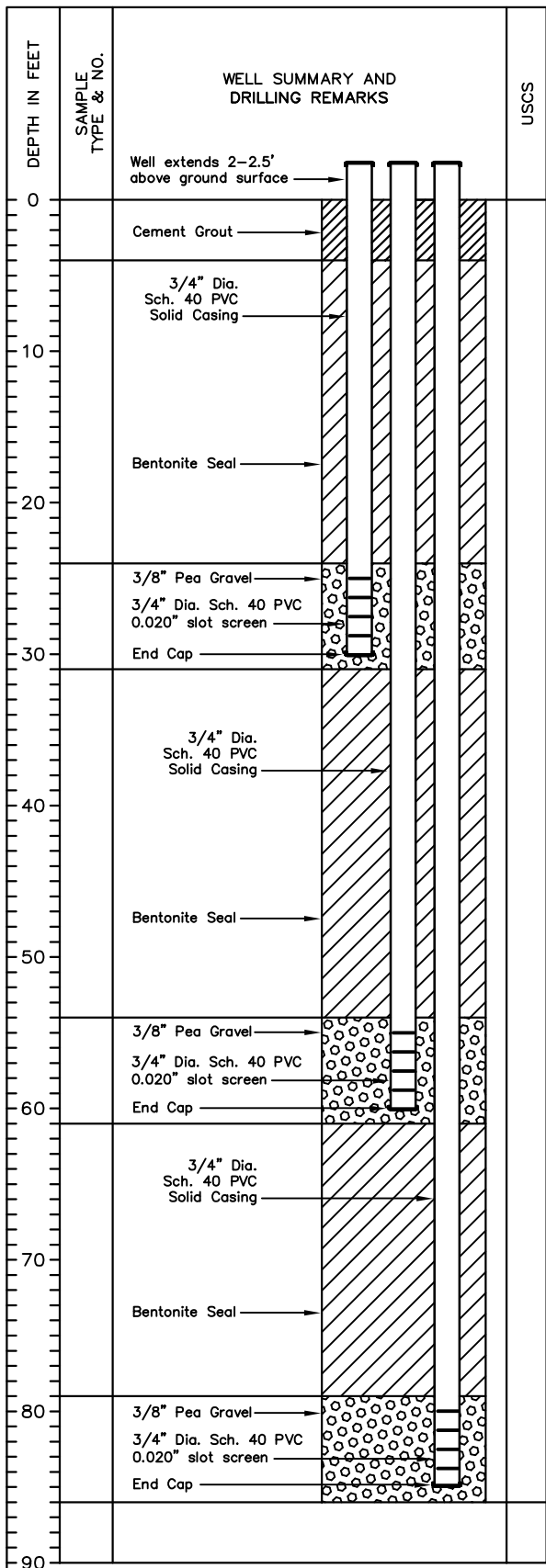
DRAWN BY	K. Black	CHECKED BY		FILE NAME & DISK NUMBER	CTP-SGP-64
DATE	9/15/04	APPROVED BY			



MONITORING WELL NO. CTP-SGP-65

COORDINATES: _____

FIELD GEOLOGIST I. Chigiotto DATE BEGAN 8/26/04
 CHECKED BY J. Moser DATE FINISHED 8/26/04
 APPROVED BY J. Moser SURFACE ELEV. _____
 TOTAL DEPTH 86 ft. CORE SIZE _____



USCS	PROFILE	DESCRIPTION
		0-3' Dark Brown Sandy Soil with organics, dry, loose, fine grained
		3-15' Brown Sand, dry, loose, medium-fine grained
		15-33' Brown Sand, slightly moist, medium grained
		33-45' Medium to Light Brown Sand, slightly moist, medium grained
		45-50' Medium Brown Sand, slightly moist, medium grained
		50-55' Medium to Medium Dark Brown Sand, slightly moist, medium grained
		55-86' Medium Brown Sand, slightly moist, medium grained
		Bottom of Boring = 86' Logged by tailings

DRILLING CO. : Woodward Drilling
 DRILLING METHOD : 8" Hollow Stem Auger
 LOCATION : CTP Site, Former Fort Ord, California
 PROJECT NO. : 783751

DRAWN BY	K. Black	CHECKED BY		FILE NAME & DISK NUMBER	CTP-SGP-65
DATE	9/15/04	APPROVED BY			



MONITORING WELL NO. CTP-SGP-66

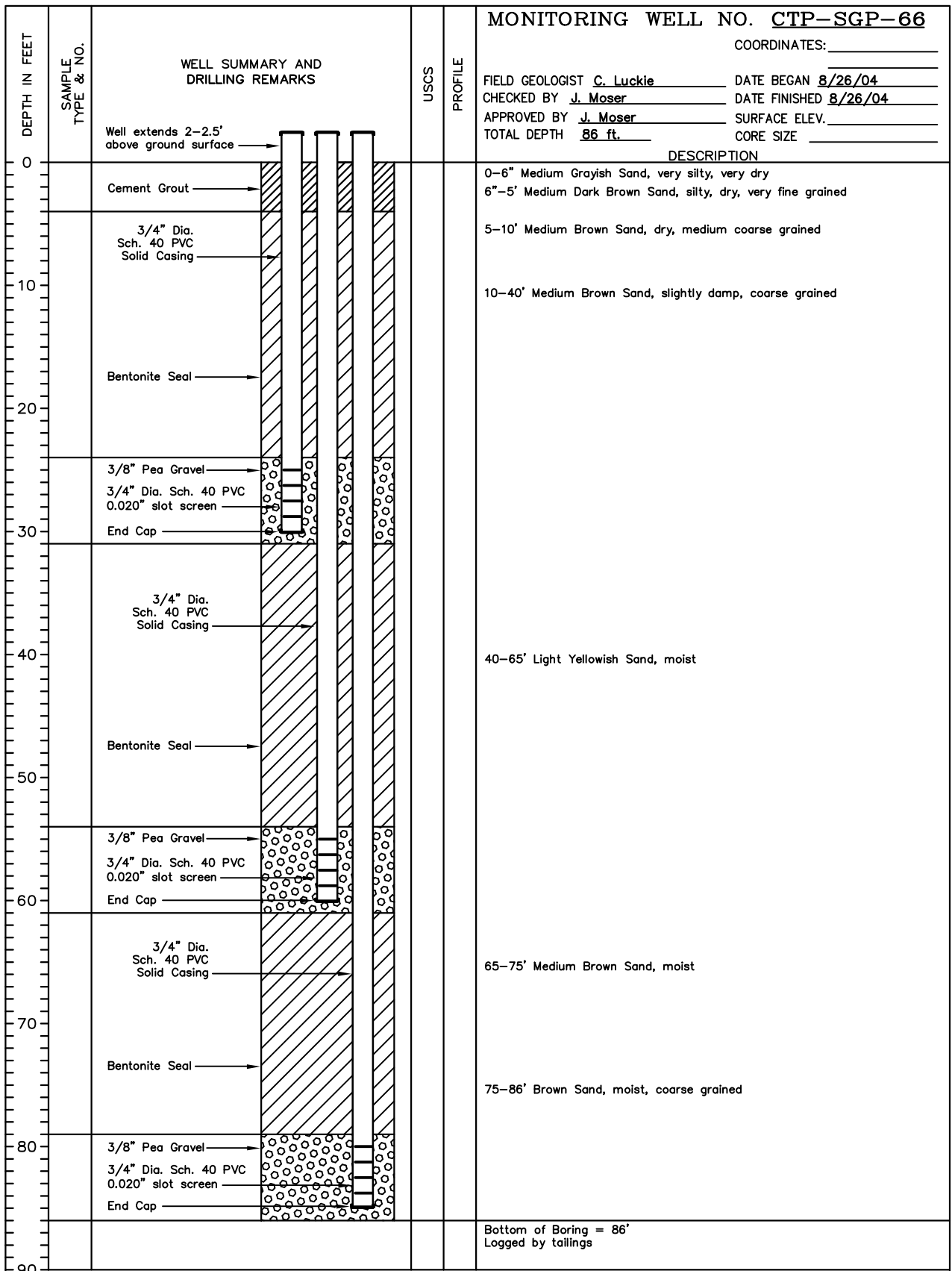
COORDINATES: _____

FIELD GEOLOGIST C. Luckie DATE BEGAN 8/26/04

CHECKED BY J. Moser DATE FINISHED 8/26/04

APPROVED BY J. Moser SURFACE ELEV. _____

TOTAL DEPTH 86 ft. CORE SIZE _____



DESCRIPTION

0-6" Medium Grayish Sand, very silty, very dry
6"-5' Medium Dark Brown Sand, silty, dry, very fine grained

5-10' Medium Brown Sand, dry, medium coarse grained

10-40' Medium Brown Sand, slightly damp, coarse grained

40-65' Light Yellowish Sand, moist

65-75' Medium Brown Sand, moist

75-86' Brown Sand, moist, coarse grained

Bottom of Boring = 86'
Logged by tailings

DRILLING CO. : Woodward Drilling
DRILLING METHOD : 8" Hollow Stem Auger
LOCATION : CTP Site, Former Fort Ord, California
PROJECT NO. : 783751

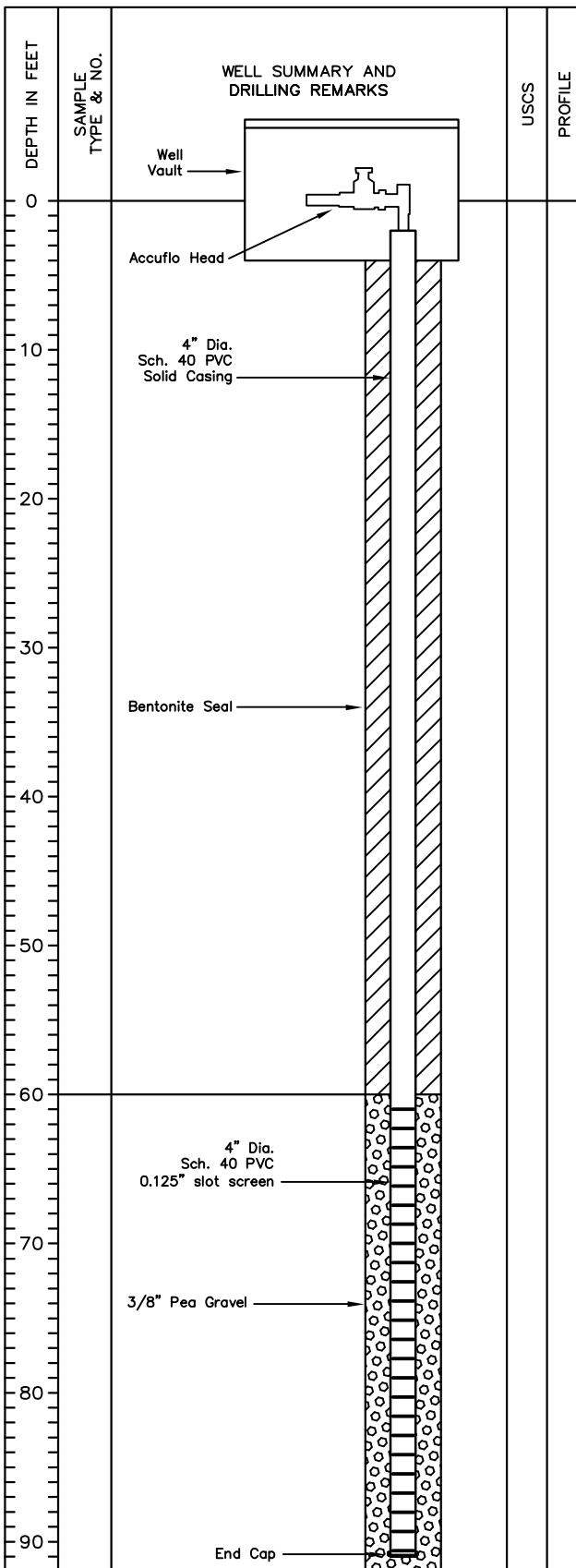
DRAWN BY	K. Black	CHECKED BY		FILE NAME & DISK NUMBER	CTP-SGP-66
DATE	9/15/04	APPROVED BY			



MONITORING WELL NO. MW-BW-68-A

COORDINATES: N _____
E _____

FIELD GEOLOGIST C. Luckie DATE BEGAN 3/1/04
 CHECKED BY J. Moser DATE FINISHED 3/2/04
 APPROVED BY J. Moser SURFACE ELEV. _____
 TOTAL DEPTH 92 ft. CORE SIZE N/A



DESCRIPTION

0-6" Dark Brown Soil / Organics
 6"-3' Dark Brown Sand, moist
 3-7' Yellowish Brown Sand, moist

7-16' Medium Brown Sand, moist

16-75' Light Brown Sand, moist

75-92' Medium, Light Brown Sand mix, moist

Bottom of Boring = 92'
 Hand augered to 5'
 Logged by tailings

DRILLING CO. : Woodward Drilling
 DRILLING METHOD : 8" Hollow Stem Auger
 LOCATION : CTP Site, Former Fort Ord, California
 PROJECT NO. : 783751

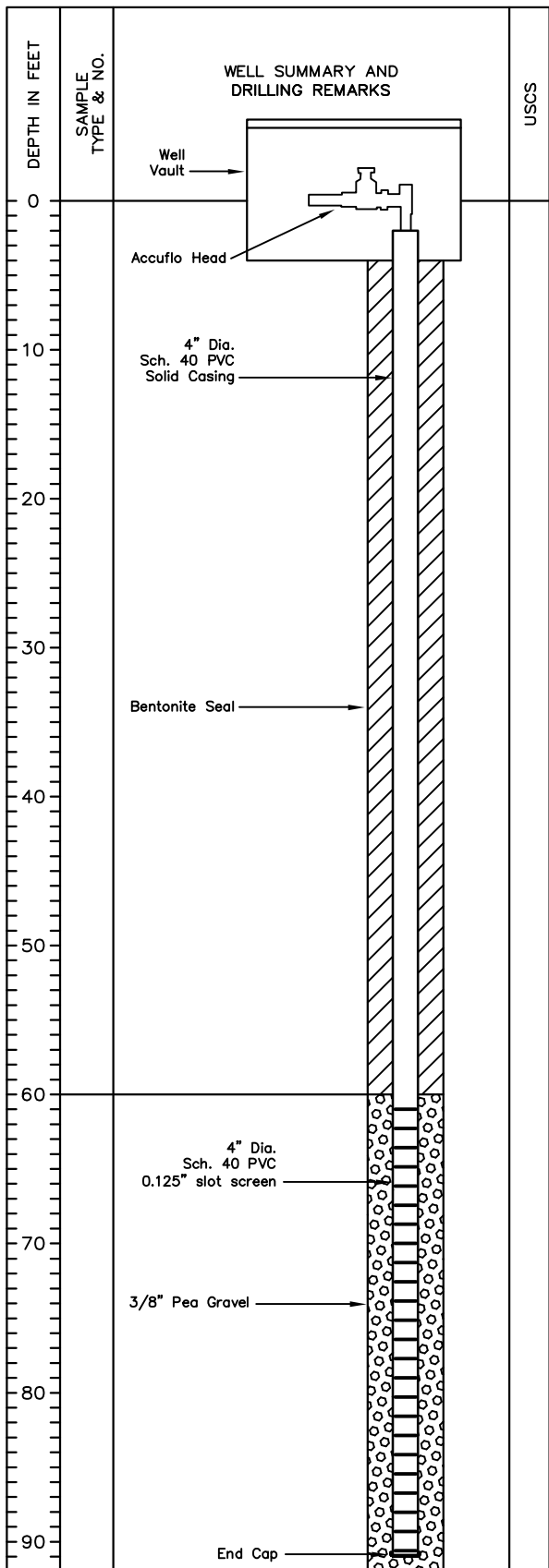
DRAWN BY	K. Black	CHECKED BY		FILE NAME & DISK NUMBER	MW-BW-68-A
DATE	6/1/04	APPROVED BY			



MONITORING WELL NO. MW-BW-69-A

COORDINATES: N _____
E _____

FIELD GEOLOGIST C. Luckie DATE BEGAN 3/2/04
 CHECKED BY J. Moser DATE FINISHED 3/2/04
 APPROVED BY J. Moser SURFACE ELEV. _____
 TOTAL DEPTH 92 ft. CORE SIZE N/A



USCS	PROFILE	DESCRIPTION
		0-8' Dark Brown Sand, no vegetation, moist
		8-23' Light Brown Sand, moist
		23-28' Yellowish Sand, moist
		28-30' Dark Brown Sand, moist
		30-92' Light Brown Sand, moist

Bottom of Boring = 92'
Logged by tailings

DRILLING CO. : Woodward Drilling
 DRILLING METHOD : 8" Hollow Stem Auger
 LOCATION : CTP Site, Former Fort Ord, California
 PROJECT NO. : 783751

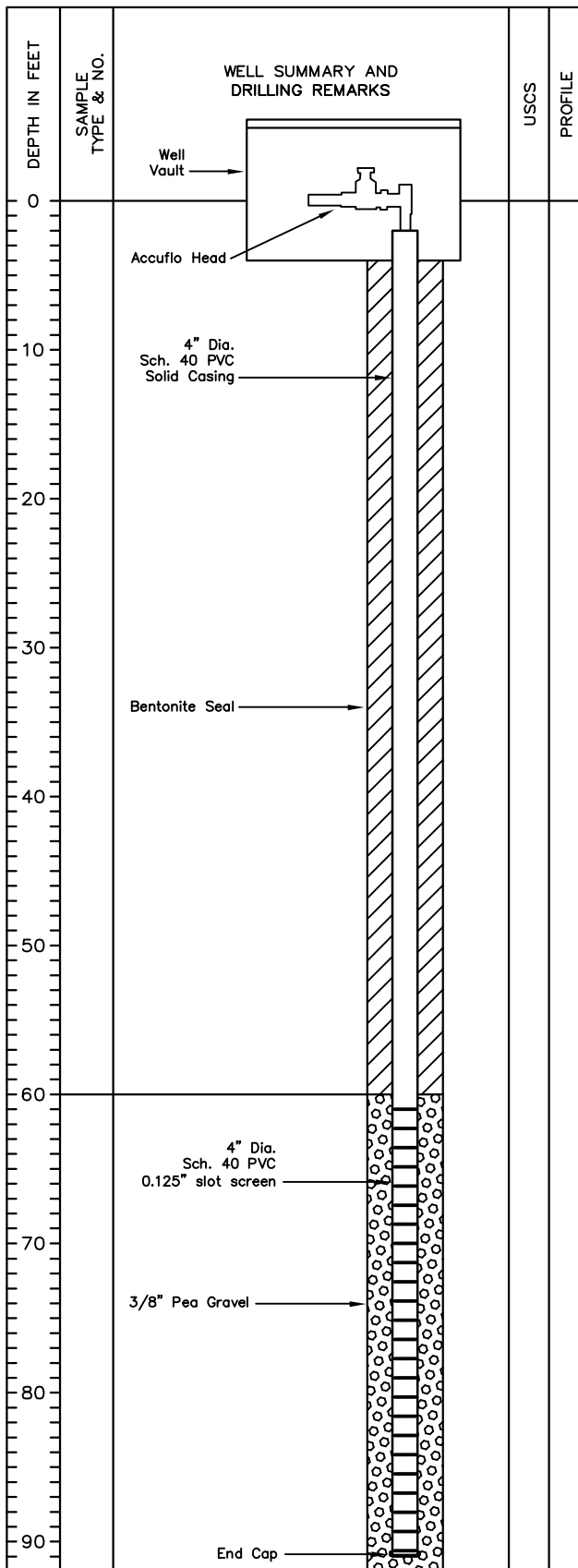
DRAWN BY	K. Black	CHECKED BY		FILE NAME & DISK NUMBER	MW-BW-69-A
DATE	6/1/04	APPROVED BY			



MONITORING WELL NO. MW-BW-70-A

COORDINATES: N _____
E _____

FIELD GEOLOGIST C. Luckie DATE BEGAN 3/1/04
 CHECKED BY J. Moser DATE FINISHED 3/1/04
 APPROVED BY J. Moser SURFACE ELEV. _____
 TOTAL DEPTH 92 ft. CORE SIZE N/A



DESCRIPTION

0-6" Light Yellowish Sand with organics
 6"-2' Dark Brown Sand, moist
 2-25' Light Colored Sand, moist

25-51' Light, Dark Brown Sand mix, moist

51-92' Light Brown Sand, moist

Bottom of Boring = 92'
 Hand augered to 6' (hit root @ 5')
 Logged by tailings

DRILLING CO. : Woodward Drilling
 DRILLING METHOD : 8" Hollow Stem Auger
 LOCATION : CTP Site, Former Fort Ord, California
 PROJECT NO. : 783751

DRAWN BY	K. Black	CHECKED BY		FILE NAME & DISK NUMBER	MW-BW-70-A
DATE	6/1/04	APPROVED BY			

