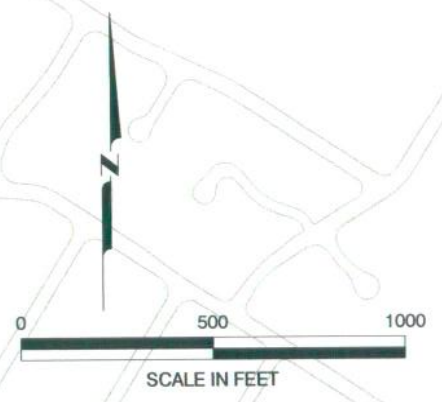


EXPLANATION	
	GPR LINE
	MW-BW-15-A A-AQUIFER MONITORING WELL
	MW-B-13-180 UPPER 180-AQUIFER MONITORING WELL
	MP-BW-32 LOWER 180-AQUIFER MONITORING WELL
	PS-CT-06 BIOTREATABILITY PILOT STUDY OBSERVATION WELL
	FO-27 (destroyed) DESTROYED WELL



DESIGNED: Rws	PROJECT NO: 55596
DRAWN: Rws	SCALE: Check Graphic Scale
APPROVED:	CHECKED:
DATE: 04/30/05	DATE:



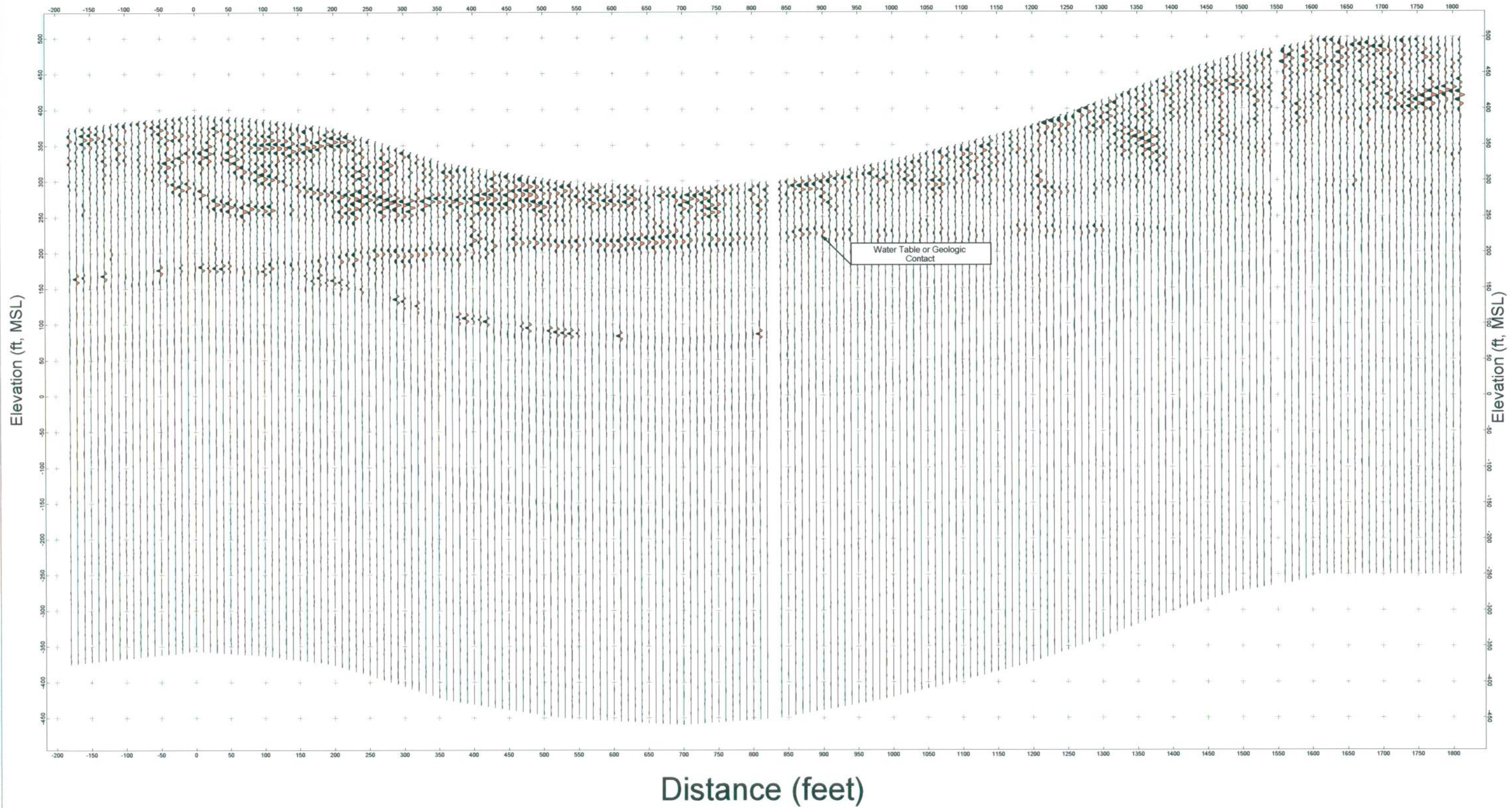
MACTEC Engineering and Consulting Services
 5841 Old Redwood Blvd, Suite 300
 Petaluma, California 94952
 Phone: (707) 793-3800

OU CTP RI/FS
 Former Fort Ord, California

GPR Test Line Locations
 Carbon Tetrachloride Plume

West

East



DESIGNED:	Rws	PROJECT NO:	55596					
DRAWN:	Rws	SCALE:	Check Graphic Scale					
APPROVED:		CHECKED:						
NO.	DATE	REVISIONS	BY	CHK	DATE:	04/30/05	DATE:	



MACTEC

MACTEC Engineering and Consulting Services
 5841 Old Redwood Blvd., Suite 300
 Petaluma, California 94952
 Phone: (707) 793-3800

OU CTP RI/FS
 Former Fort Ord, California

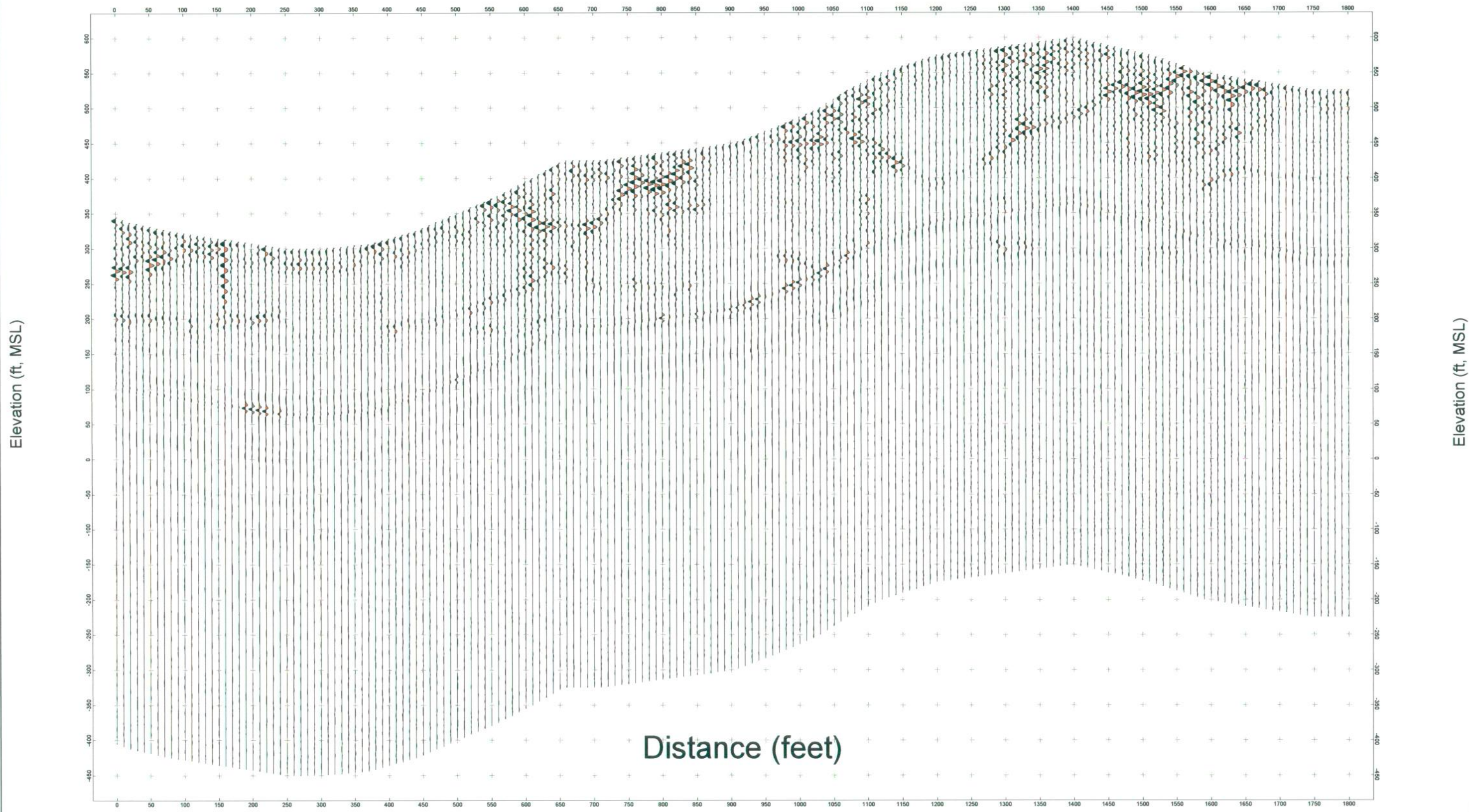
GPR Line 1 (West to East)
 Carbon Tetrachloride Plume

PLATE:

B-2

South

North



Elevation (ft, MSL)

Elevation (ft, MSL)

Distance (feet)

DESIGNED:	Rws	PROJECT NO:	55596
DRAWN:	Rws	SCALE:	Check Graphic Scale
APPROVED:		CHECKED:	
NO.	DATE	REVISIONS	BY
			CHK
		DATE:	04/30/05
		DATE:	



MACTEC

MACTEC Engineering and Consulting Services
 5841 Old Redwood Blvd, Suite 300
 Petaluma, California 94952
 Phone: (707) 793-3800

OU CTP RI/FS
 Former Fort Ord, California

GPR Line 2 (South to North)
 Carbon Tetrachloride Plume

PLATE:
B-3