

APPENDIX J

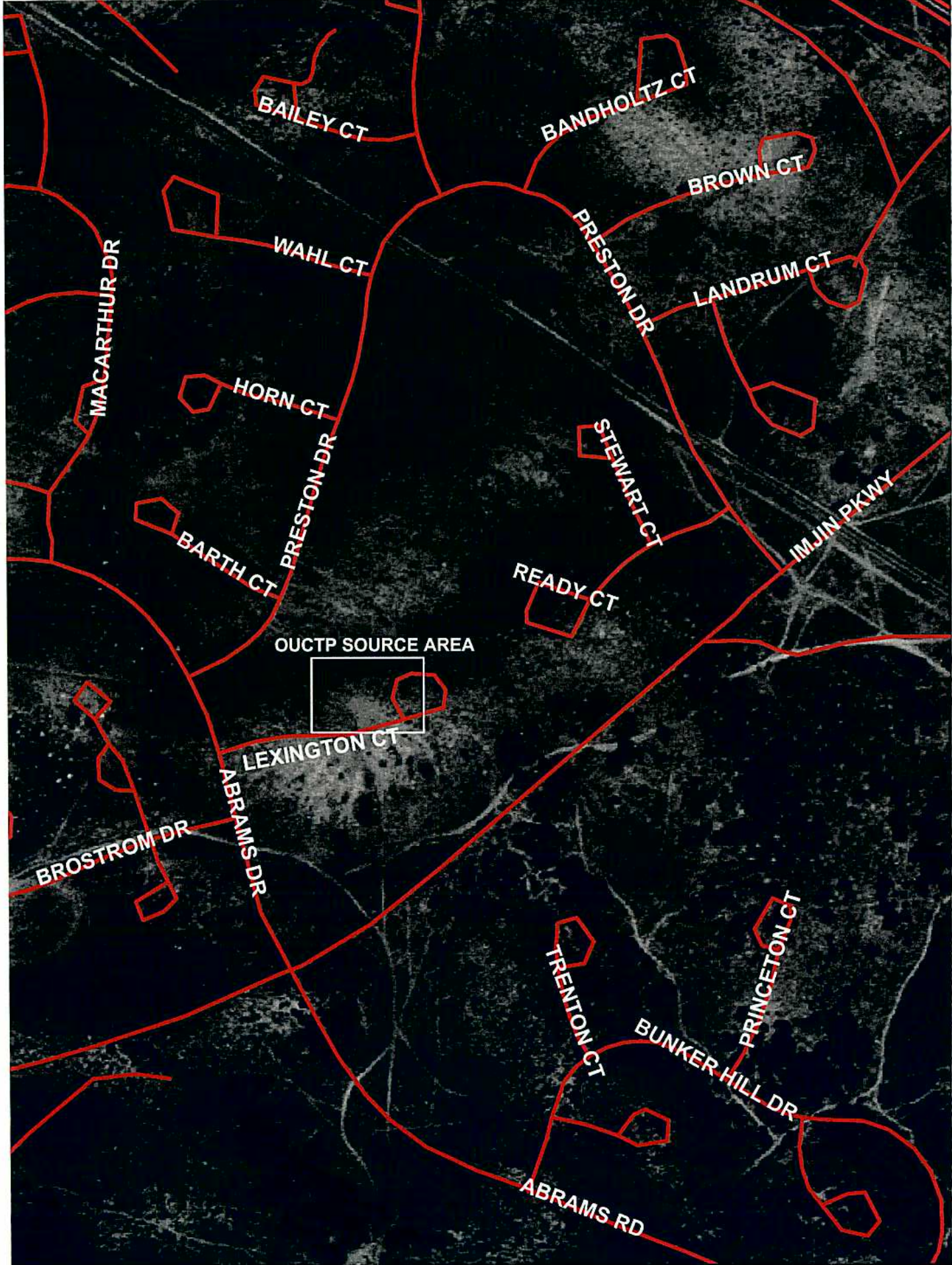
COMPILATION OF HISTORIC AERIAL PHOTOGRAPHS

CONTENTS

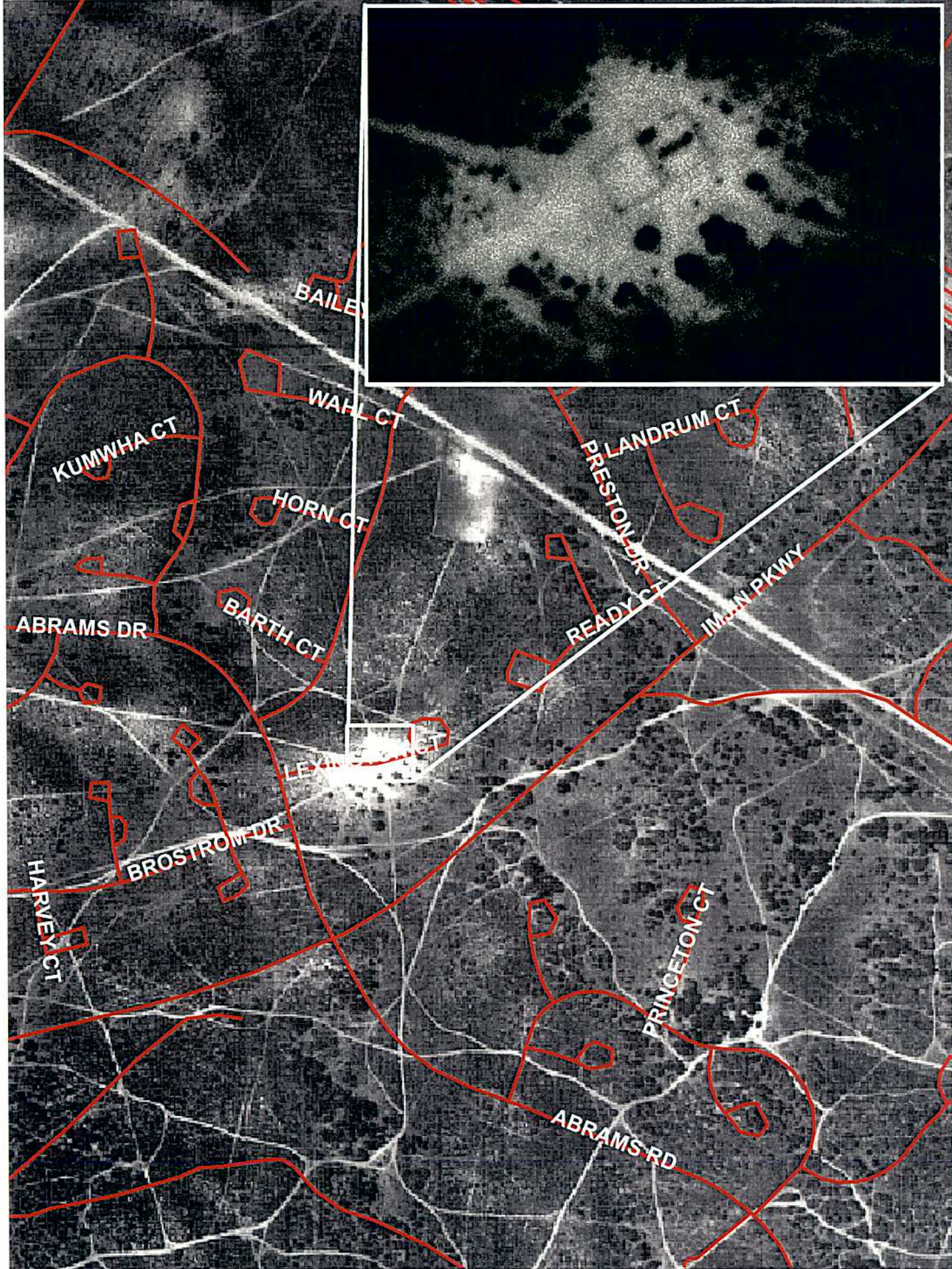
Plates

- J Aerial Photo of OUCTP Source Area, 1941
- K Aerial Photo of OUCTP Source Area, 1949
- L Aerial Photo of OUCTP Source Area, 1956
- M Aerial Photo of OUCTP Source Area, 1966
- N Aerial Photo of OUCTP Source Area, 1978
- O Aerial Photo of OUCTP Source Area, 2003

This appendix contains a series of representative aerial photographs that were used in the evaluation of possible source areas for the OU Carbon Tetrachloride groundwater plume. The current street configuration is presented on each photo for reference purposes. Based on the evaluation it was determined that a small storage area or training facility that reportedly stored carbon tetrachloride cleaning solvent was present in the vicinity of Lexington Court. The facility is visible in the 1949 and the 1956 aerial photographs, but is not visible in the 1966 or later photographs. Enhanced views of the storage area from 1949 are also provided.



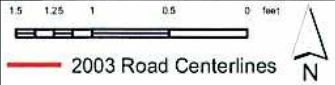
Drawn directory date	DRAWN:	PROJECT NO:	 MACTEC Engineering and Consulting 5341 Old Redwood Highway, Suite 300 Petaluma, California 94954 Phone: (707) 793-3800	 2003 Road Centerline		Aerial Photo of OUCTP Source Area, 1941: OUCTP RI Former Fort Ord, California	PLATE Plate J
		SCALE: 1:1200					
		CHECKED:					
		DATE: 9/28/05					



Drawn: directory/afp

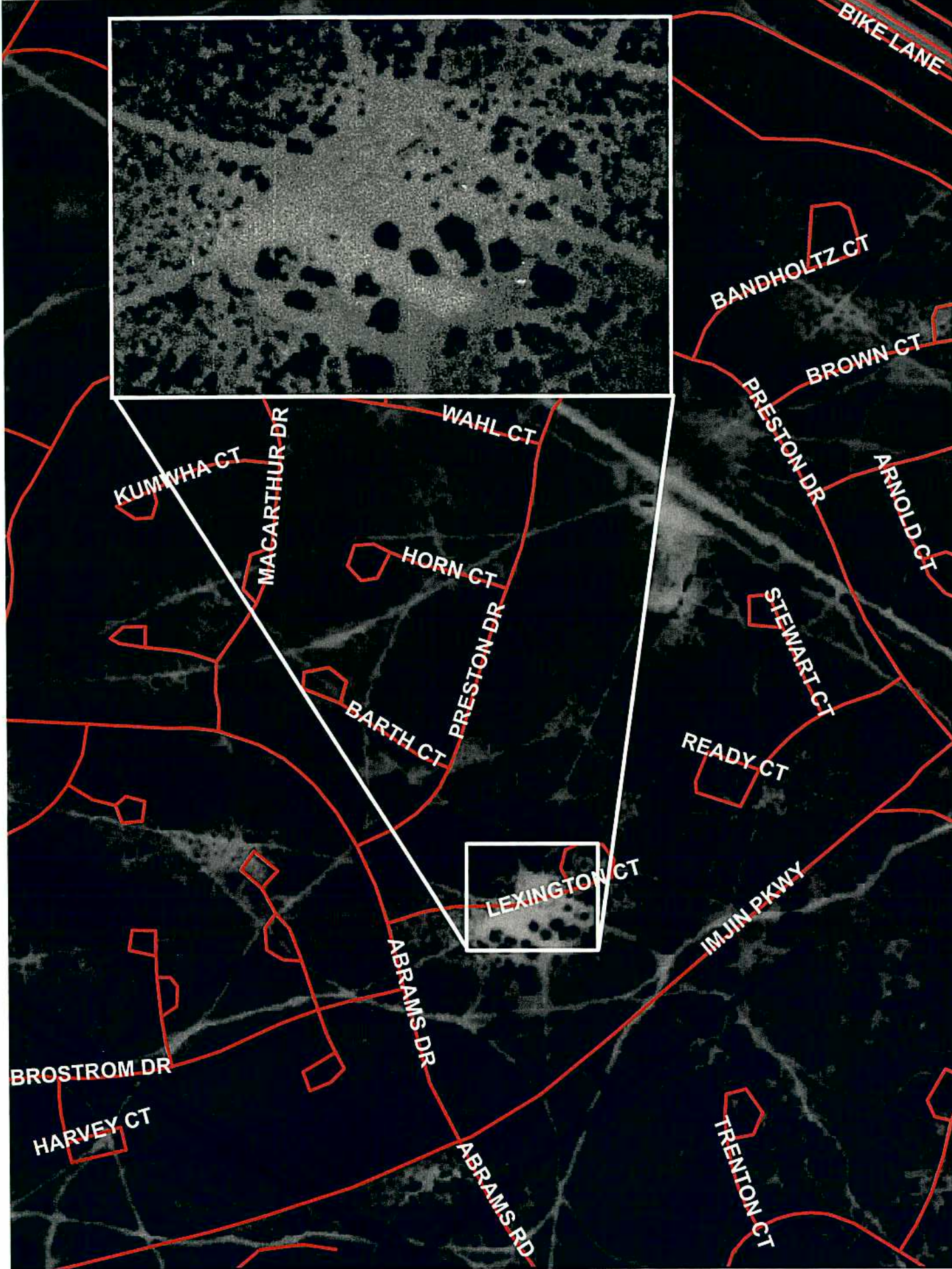
DRAWN:	PROJECT NO:
CHECKED:	SCALE: No Scale
DATE: 9/28/05	CHECKED:


 MACTEC Engineering and Consulting
 5341 Old Redwood Highway, Suite 300
 Petaluma, California 94954
 Phone: (707) 793-3600



Aerial Photo of OUCTP Source Area,
 1949: OUCTP RI
 Former Fort Ord, California

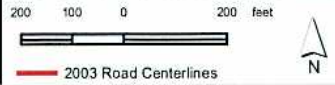
PLATE
 Plate K



Drawn: dfractory

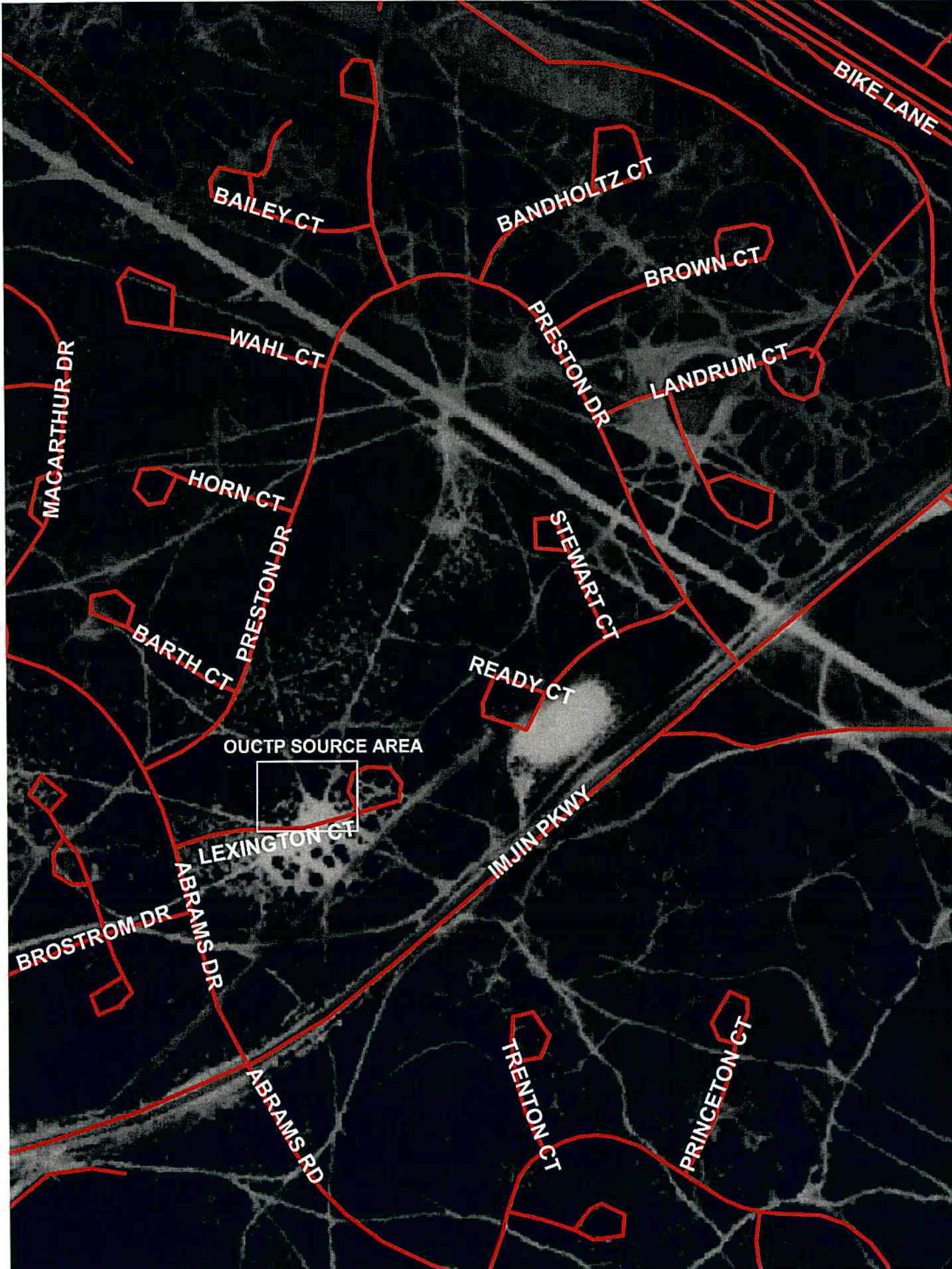
DRAWN	PROJECT NO.
	SCALE 1:1200
	CHECKED:
	DATE: 9/28/05


 MACTEC Engineering and Consulting
 5341 Old Redwood Highway, Suite 200
 Petaluma, California 94954
 Phone: (707) 793-3800



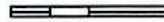

Aerial Photo of OUCTP Source Area,
 1956: OUCTP RI
 Former Fort Ord, California

PLATE
 Plate L

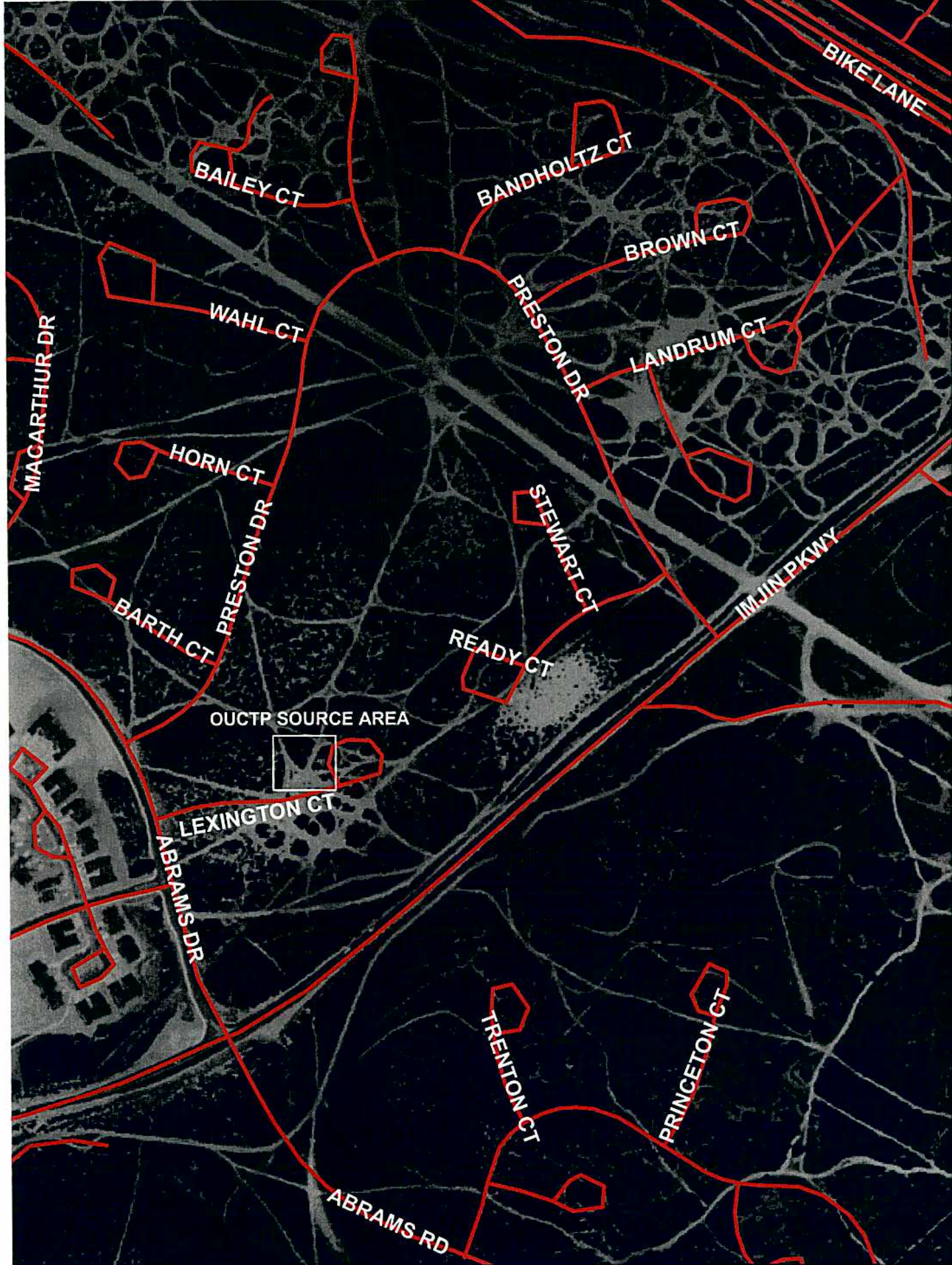


DRAWN:	PROJECT NO.
	SCALE: 1:1200
	CHECKED:
	DATE: 9/28/05


 MACTEC Engineering and Consulting
 2341 Old Redwood Highway, Suite 308
 Petaluma, California 94954
 Phone (707) 793-3800

150 75 0 150 feet

 2003 Road Centerline


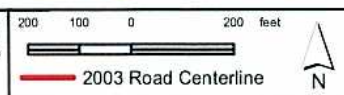
Aerial Photo of OUCTP Source Area,
 1966:OUCTP RI
 Former Fort Ord, California
 PLATE
 Plate M



Date directory set

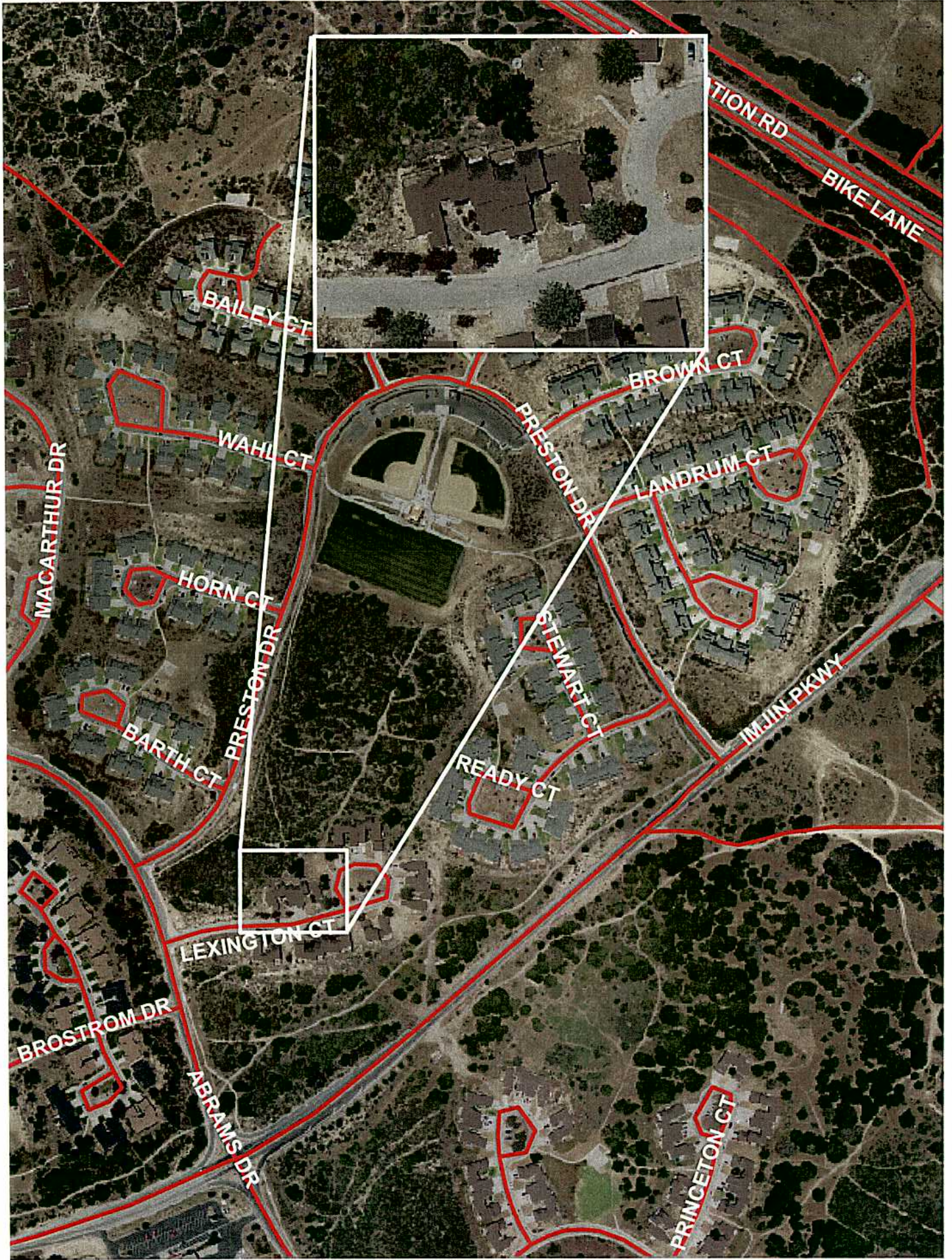
DRAWN:	PROJECT NO:
CHECKED:	SCALE: 1:1200
DATE: 9/28/05	

MACTEC Engineering and Consulting
 5341 Old Redwood Highway, Suite 300
 Petaluma, California 94954
 Phone: (707) 793-3800




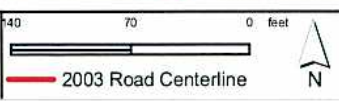
Aerial Photo of OUCTP Source Area,
 1978: OUCTP RI
 Former Fort Ord, California

PLATE
 Plate N



DRAWN:	PROJECT NO.
	SCALE: 1:1200
	CHECKED:
	DATE: 9/28/05


MACTEC Engineering and Consulting
 2341 Old Redwood Highway, Suite 300
 Petaluma, California 94954
 Phone: (707) 793-3800



Aerial Photo of OUCTP Source Area,
 2003:OUCTP RI
 Former Fort Ord, California

PLATE
 Plate O