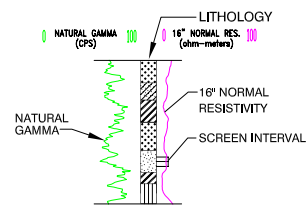


September 2004 Groundwater elevation (averaged)

▽ A-Aquifer

Maximum Carbon Tetrachloride Concentration
12/2001 - 9/2004

- ND (0.5 mg/l)
- <0.50 mg/l (State MCL)
- 0.5 - 5.0 mg/l
- > 5.0 mg/l (Federal MCL)



EXPLANATION

- CLAYEY SANDS WITH OR WITHOUT GRAVEL
- INORGANIC CLAYS OF HIGH PLASTICITY, FAT CLAYS
- POORLY GRADED SANDS WITH OR WITHOUT GRAVEL, LITTLE OR NO FINES
- INORGANIC SILTS, MICACEOUS OR DIATOMACEOUS, FINE SANDY OR SILTY SOILS, ELASTIC SILTS
- SILTY GRAVELS, SILTY GRAVELS WITH SAND
- CLAYEY GRAVELS, CLAYEY GRAVELS WITH SAND
- INORGANIC CLAYS OF LOW TO MEDIUM PLASTICITY, CLAYS WITH SANDS AND GRAVELS, LEAN CLAYS
- WELL GRADED SANDS WITH OR WITHOUT GRAVEL, LITTLE OR NO FINES

NO.	DATE	REVISIONS	BY	CHK	DATE

DRAWN: PCB	PROJECT NO: 55596
ENGINEER:	SCALE: AS SHOWN
CHECKED:	APPROVED: <i>John Young MDT</i>
DATE:	DATE: 04/05



Ford Ord OUCTP RI/FS
Former Fort Ord, California

Cross Section A-A'

PLATE:	4
SHEET:	OF
REVISION NUMBER:	0
DATE:	11/2004