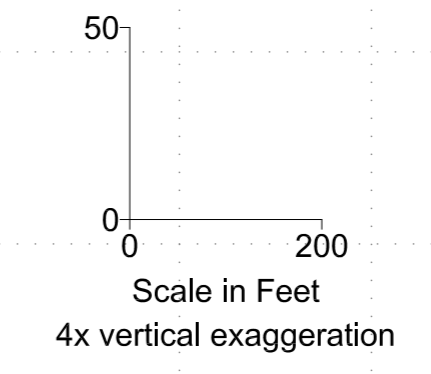
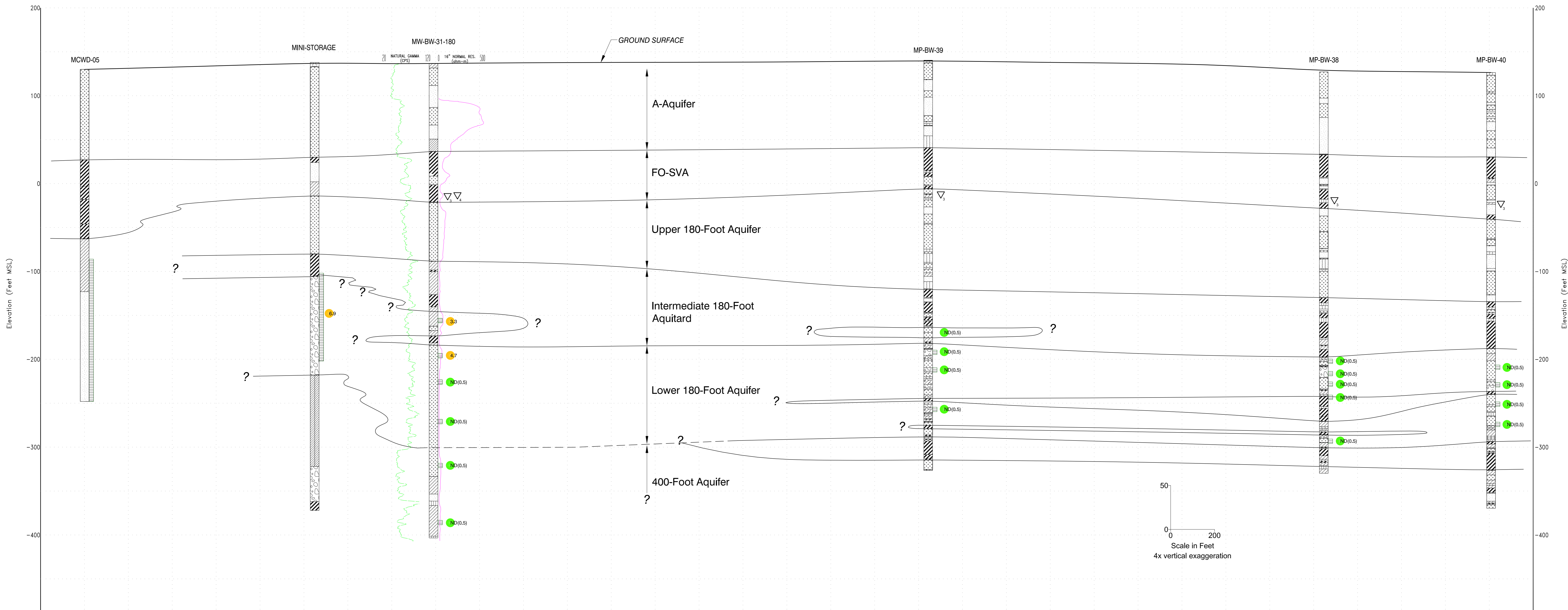


F

F'



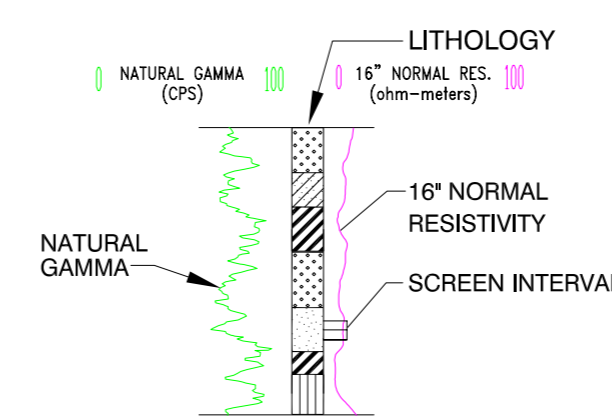
September 2004 Groundwater elevation (averaged)

- ▽ Lower 180-Foot Aquifer
- ▽ 400 Foot Aquifer

Note: Groundwater elevations averaged for Westbay ports

Maximum Carbon Tetrachloride Concentration 12/2001 - 9/2004

- ND (0.5 mg/l)
- <0.50 mg/l (State MCL)
- 0.5 - 5.0 mg/l
- > 5.0 mg/l (Federal MCL)



EXPLANATION

- CLAYEY SANDS WITH OR WITHOUT GRAVEL
- INORGANIC CLAYS OF HIGH PLASTICITY, FAT CLAYS
- POORLY GRADED SANDS WITH OR WITHOUT GRAVEL, LITTLE OR NO FINES
- INORGANIC SILTS, MICACEOUS OR DIATOMACEOUS, FINE SANDY OR SILTY SOILS, ELASTIC SILTS
- SILTY GRAVELS, SILTY GRAVELS WITH SAND
- CLAYEY GRAVELS, CLAYEY GRAVELS WITH SAND
- INORGANIC CLAYS OF LOW TO MEDIUM PLASTICITY, CLAYS WITH SANDS AND GRAVELS, LEAN CLAYS
- WELL GRADED SANDS WITH OR WITHOUT GRAVEL, LITTLE OR NO FINES



Fort Ord OUTCP RI/FS
Former Fort Ord, California

Cross-Section F-F'

PLATE 7
DATE: 11/2004

NO.	DATE	REVISIONS	BY	CHK	DATE	DRAWN:	PROJECT NO:
						ENGINEER:	55596 00131
						CHECKED:	SCALE: AS SHOWN
						APPROVED:	DATE: 04/05

55596-04-00131-10
20050228