

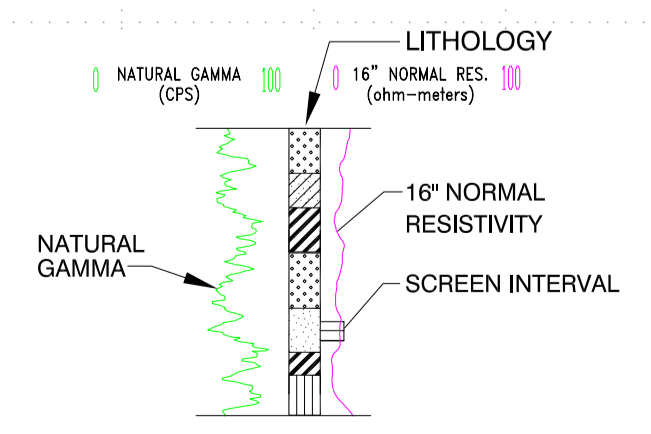
September 2004 Groundwater elevation (averaged)

- ▽₁ A Aquifer
- ▽₂ Upper 180-Foot Aquifer
- ▽₃ Lower 180-Foot Aquifer
- ▽₄ 400 Foot Aquifer

**Maximum Carbon Tetrachloride Concentration
12/2001 - 9/2004**

- ND (0.5 mg/l)
- <0.50 mg/l (State MCL)
- 0.5 - 5.0 mg/l
- > 5.0 mg/l (Federal MCL)

Note: Groundwater elevations averaged for Westbay ports



- EXPLANATION**
- CLAYEY SANDS WITH OR WITHOUT GRAVEL
 - INORGANIC CLAYS OF HIGH PLASTICITY, FAT CLAYS
 - POORLY GRADED SANDS WITH OR WITHOUT GRAVEL, LITTLE OR NO FINES
 - INORGANIC SILTS, MICACEOUS OR DIATOMACEOUS, FINE SANDY OR SILTY SOILS, ELASTIC SILTS
 - SILTY GRAVELS, SILTY GRAVELS WITH SAND
 - CLAYEY GRAVELS, CLAYEY GRAVELS WITH SAND
 - INORGANIC CLAYS OF LOW TO MEDIUM PLASTICITY, CLAYS WITH SANDS AND GRAVELS, LEAN CLAYS
 - WELL GRADED SANDS WITH OR WITHOUT GRAVEL, LITTLE OR NO FINES

NO.	DATE	REVISIONS	BY	CHK	DATE

DRAWN: PCB	PROJECT NO: 55596 00131
ENGINEER:	SCALE: AS SHOWN
CHECKED:	APPROVED: <i>John Henry MPT</i>
DATE:	DATE: 04/05



FORT ORD OUTCPI RI/FS
FORMER FORT ORD, CALIFORNIA

Cross-Section G-G'

PLATE **8**
DATE: 10/2004

55596045.DWG 1.0 20050125.106