

HTW BCT, July 22, 2022

## Q2 2022 Key Events for OU2 Landfills

- MCHD Inspection (completed 6/9)
- Annual Probe monitoring (completed 6/17)
- Annual TTU Source Test (completed 6/9)

## Q3 2022 Key Events for OU2 Landfills

- TTU Operations (ongoing)
- Rodent Trapping (ongoing)
- MCHD Inspection
- Quarterly Probe monitoring (schedule 8/22)
- Annual mowing (scheduled September)



Ahtna

**Thermal Treatment Unit  
Operation Summary  
2006 - 2022**

<b>TREATMENT SYSTEM OPERATION SUMMARY</b>	
<b>Treatment System Start Date:</b>	<b>6/4/2001</b>
<b>TTU Start Date:</b>	<b>4/4/2006</b>
<b>Last Reading Date/Time:</b>	<b>7/19/2022 15:52</b>
<b>Historical through 2021 (TTU only):</b>	
Total TTU Hours:	<b>137,952</b>
Total TTU Hours Operated:	<b>38,144</b>
% TTU Operation:	<b>27.7%</b>
Total Pounds of Methane Removed:	<b>3,884,416</b>
<b>Current Year 2022:</b>	
Total Hours:	<b>4,800</b>
Total Hours Operated:	<b>576</b>
% TTU Operation:	<b>12%</b>
Total Pounds of Methane Removed:	<b>48,874</b>
<b>Cumulative (since TTU startup in 2006):</b>	
% TTU Operation:	<b>27.1%</b>
Total Pounds of Methane Removed:	<b>3,933,289</b>

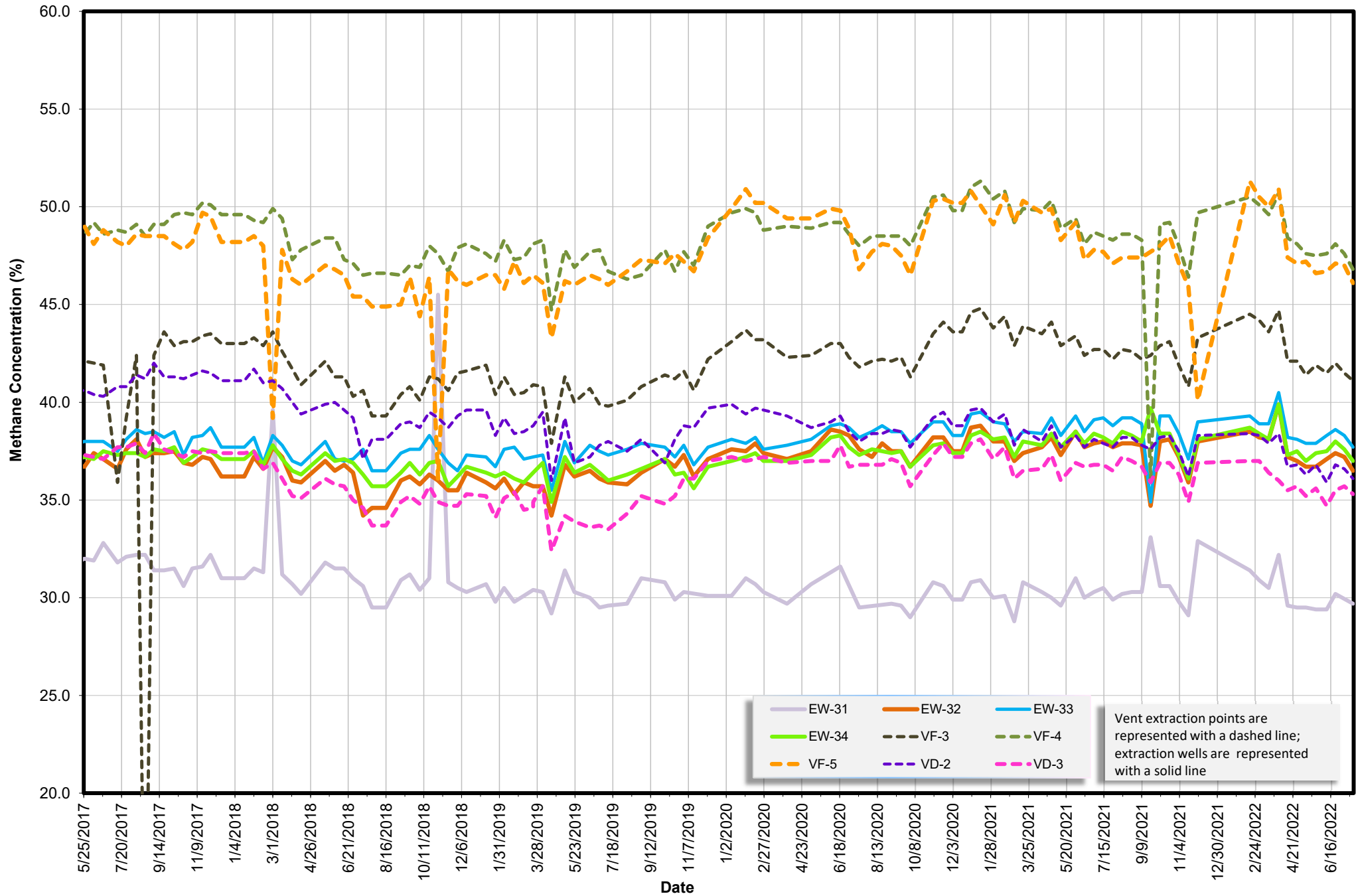
**Thermal Treatment Unit  
Operation Summary  
2006 - 2022**

Year	Operating Hours	Change from Previous Year	Methane			OU2 Groundwater COCs	
			Pounds Removed	Change from Previous Year	Pounds/week	Pounds Removed	Change from Previous Year
2007	4,035		532,130		10,205	6.2	
2008	2,838	-30%	288,458	-46%	5,532	3.1	-51%
2009	4,493	58%	448,154	55%	8,595	3.4	11%
2010	2,421	-46%	212,681	-53%	4,079	1.4	-60%
2011	2,543	5%	228,082	7%	4,374	1.4	0%
2012	2,509	-1%	229,397	1%	4,399	1.2	-13%
2013	2,116	-16%	187,779	-18%	3,601	1.1	-8%
2014	1,961	-7%	174,427	-7%	3,345	1.0	-11%
2015	2,653	35%	237,571	36%	4,556	1.3	29%
2016	2,039	-23%	178,645	-25%	3,426	0.9	-28%
2017	1,554	-24%	135,711	-24%	2,603	0.6	-33%
2018	1,661	7%	145,174	7%	2,784	0.6	-9%
2019	1,227	-26%	113,443	-22%	2,176	0.6	9%
2020	1,316	7%	113,095	0%	2,169	0.6	0%
2021	1,158	-12%	148,148	31%	2,841	0.4	-34%
2022	576		48,874		1,702		

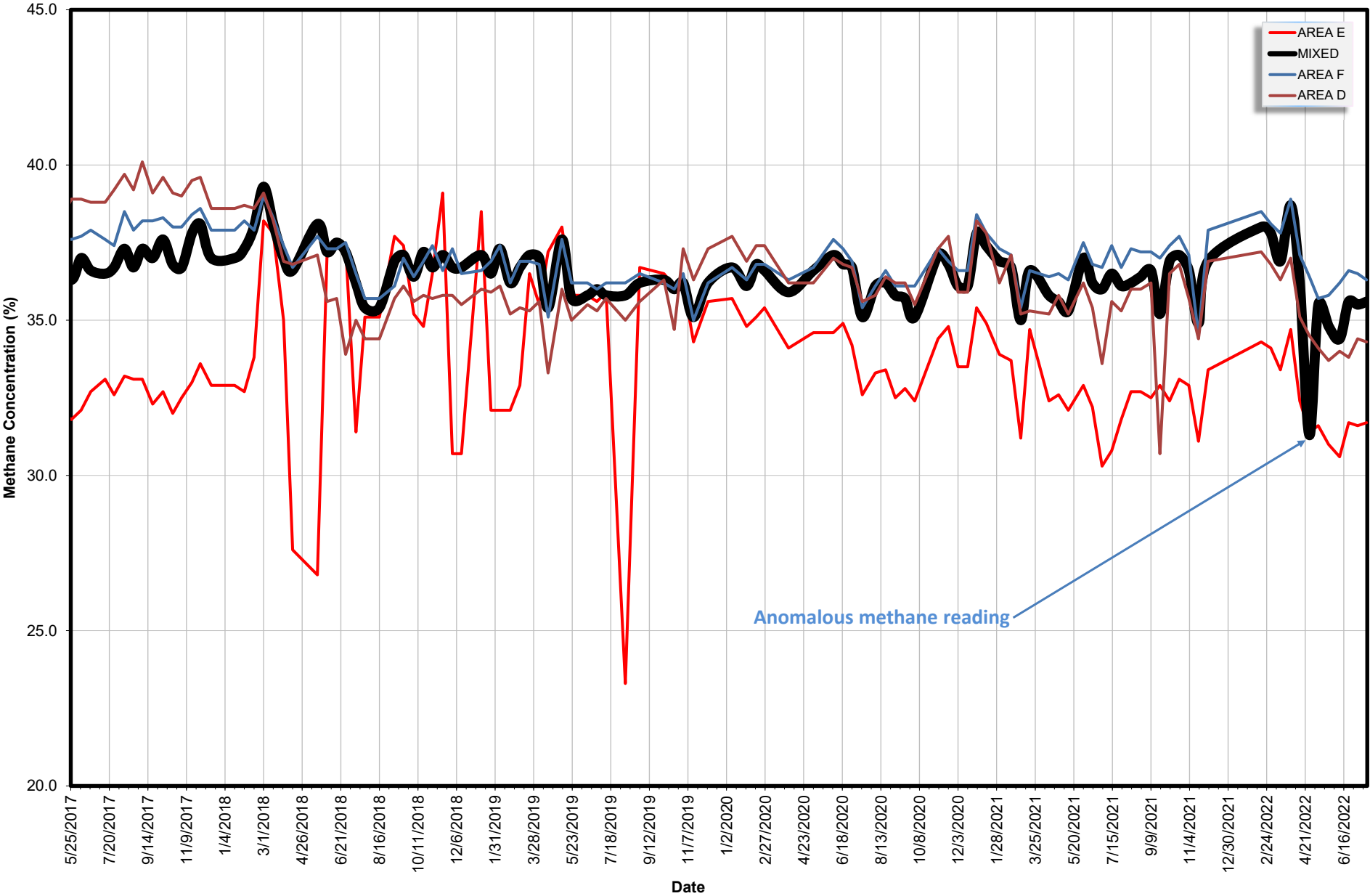
**Thermal Treatment Unit  
Operation Summary  
2006 - 2022**

<b>EXTRACTION SYSTEM (2022)</b>						
<b>Location</b>	<b>Last Instantaneous Methane Reading (%)</b>	<b>Last Instantaneous Flow Rate Reading (scfm)</b>	<b>Current Methane Removal Rate (lbs/day)</b>	<b>2022 % Operation</b>	<b>2021 Methane Removed (Lbs)</b>	<b>% Contribution of Each Extraction Source</b>
<b>Area E</b>						
EP-36	31.7	25.0	467.4	4%	33744.9	23%
<b>Area F</b>						
EW-31	29.7	3.0	52.6	4%	2419.7	2%
EW-32	36.5	13.9	299.3	4%	27,592	19%
EW-33	37.7	14.0	311.3	4%	26,694	18%
EW-34	37.0	16.6	362.3	4%	33,453	23%
VF-3	41.1	5.7	138.2	4%	7267.8	5%
VF-4	46.8	5.2	143.5	4%	1766.7	1%
VF-5	46.1	5.0	136.0	4%	5646.5	4%
<b>Area D</b>						
VD-2	36.1	4.3	91.6	4%	3166.9	2%
VD-3	35.3	3.8	79.1	4%	2659.7	2%
<b>MIXED</b>						
MIXED	35.6	96.0	2015.8	4%	143907.0	100%

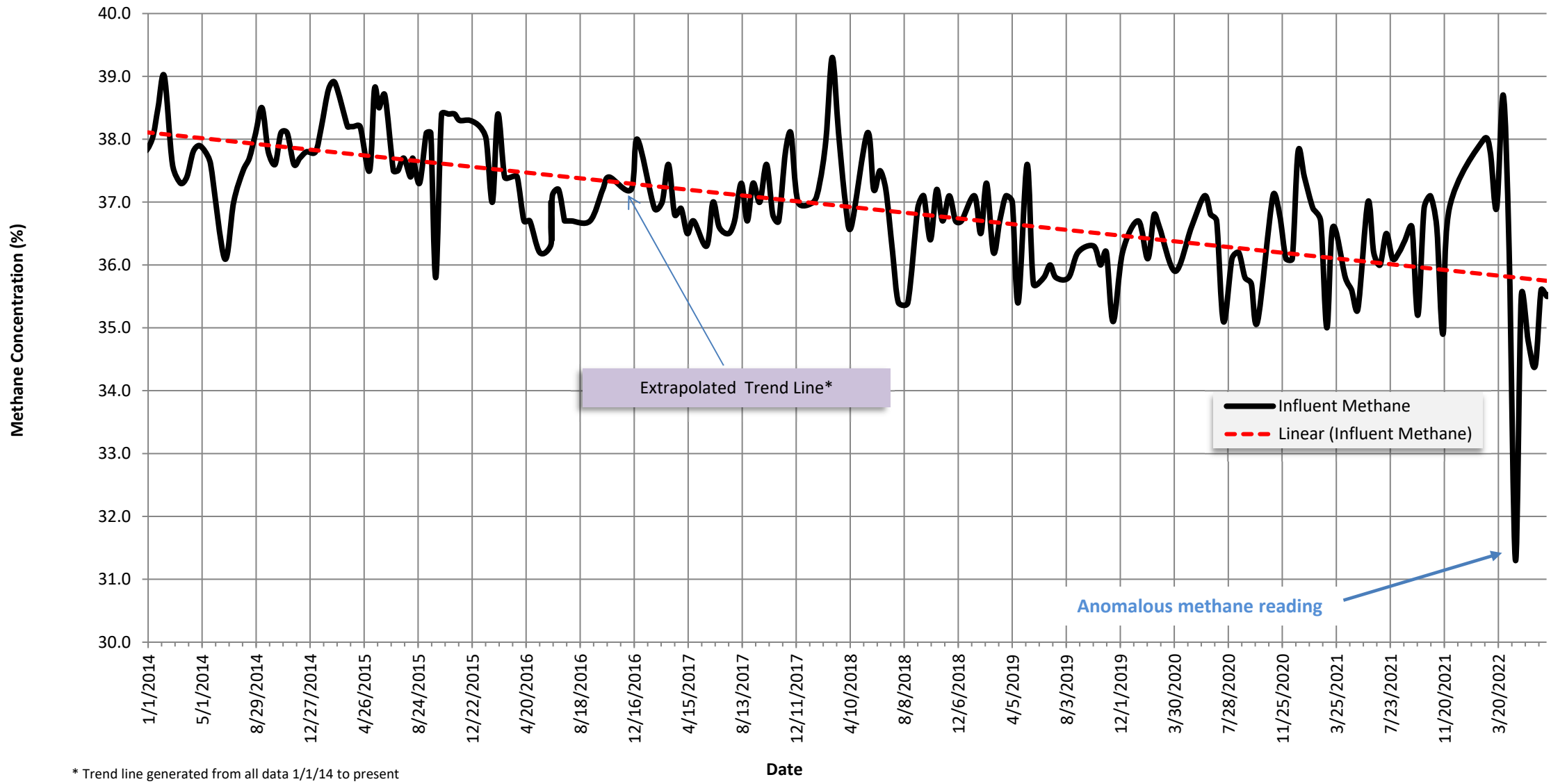
Methane Concentration Time Series Plot  
OU2 Landfill Individual Extraction Sources  
5/2017 to present



Methane Concentration vs. Time  
OU2 Landfill Extraction Sources  
1/1/2011 to present



Methane Concentration Time Series Plot  
Thermal Treatment Unit Influent  
01/01/2014 to present



\* Trend line generated from all data 1/1/14 to present