

Site 39 Inland Ranges Habitat Restoration Status Update

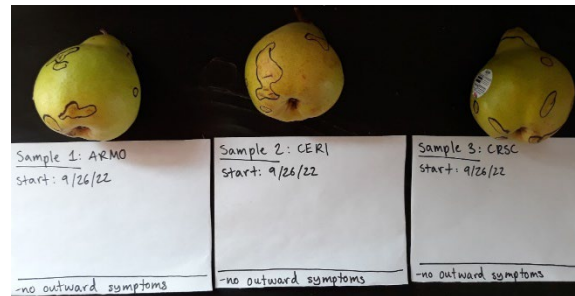
December 8, 2022

Native Plant Nursery and 2022/2023 Plant Targets

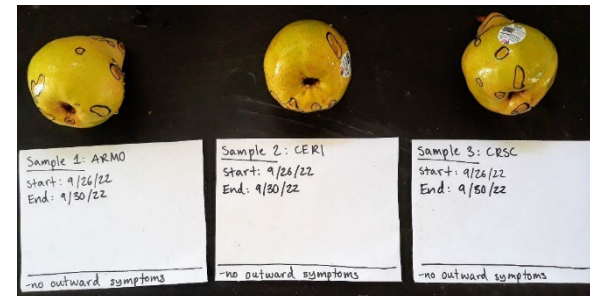
- Maintained 1,623 plants for 2022/2023
 - 100 plants for HA 18 (AMP)
 - 60 plants for HA 22 (AMP)
 - 45 plants for HA 23 (AMP)
 - 20 plants for HA 27 (AMP)
 - 1,298 plants for HA 34 (SSRP)
 - 100 plants for HA 36 (AMP)
- Performed a pear baiting test in September testing for *Phytophthora* (9/26-9/30)
 - Test yielded negative results



Tested plants



Before



After



BURLESON CONSULTING INC.

A Terracon Company

Monitoring, Data Analysis and Annual Report

- Completed plant survivorship monitoring at HAs 26, 34, and 37
- Completed Fall photo point monitoring at all HAs
- Working of first draft of the Annual Report

Purple Needlegrass (*Stipa pulchra*) Production Plot

- We yielded 201 lbs of high quality (81% pure live seed) purple needlegrass seed from our production plot this Fall

Seed Collection and Broadcast, Planting and Erosion Control

- Completed seed collection of late blooming species (California sagebrush and coyote brush) in early November
- All SSRP seed collection targets were met
 - 6 lbs of seed from 9 different species for HA 34 (0.8 acre worth of seed)
- The SSRP seed mix was broadcast on HA 34 late November
- Erosion control maintenance and planting began at HA 34 early December



Field team raking seed into the soil after seed broadcast.



Straw broadcast over seeded areas.