

HTW BCT, May 19, 2023

## Q1 2023 Key Events for OU2 Landfills

- Landfill Vegetative Cover Erosion Mitigation
- Landfill winterization
- MCHD Quarterly Inspection (2/21)
- Quarterly Probe Monitoring
- TTU Siemens analyzer pump failure (2/14)
- TTU Siemens analyzer repaired (3/7)

## Q2 2023 Key Events for OU2 Landfills

- Annual VOC Monitoring (5/10)
- Annual Probe Monitoring (5/9)
- Annual TTU Source Test (5/2)
- MCHD Quarterly Inspection (5/9)
- Vegetative Cover Repairs (covered 4/12)



Ahtna

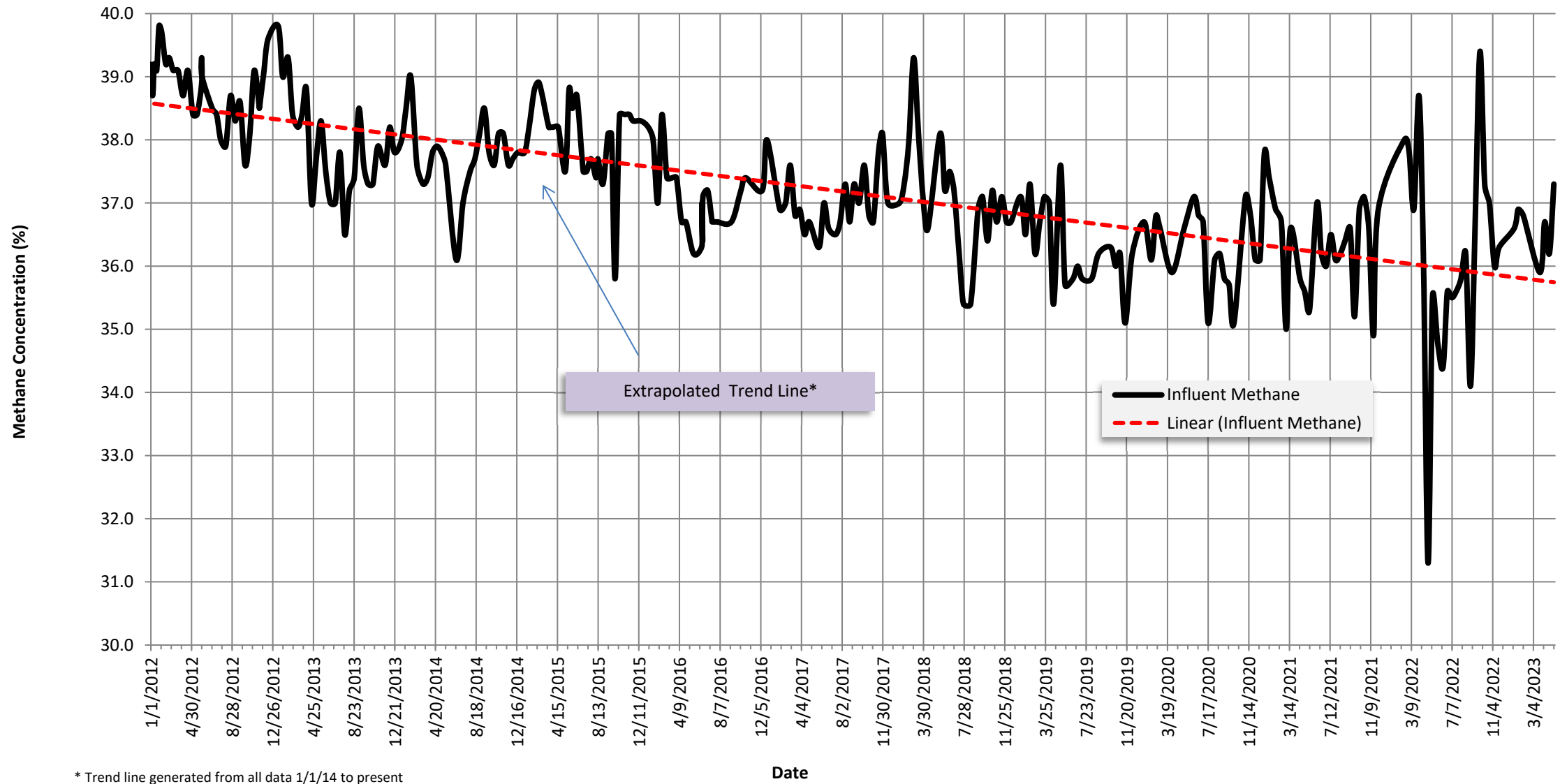
**Thermal Treatment Unit  
Operation Summary  
2006 - 2023**

| Year | Operating Hours | Change from Previous Year | Methane        |                           |             | OU2 Groundwater COCs |                           |
|------|-----------------|---------------------------|----------------|---------------------------|-------------|----------------------|---------------------------|
|      |                 |                           | Pounds Removed | Change from Previous Year | Pounds/week | Pounds Removed       | Change from Previous Year |
| 2007 | 4,035           |                           | 532,130        |                           | 10,205      | 6.2                  |                           |
| 2008 | 2,838           | -30%                      | 288,458        | -46%                      | 5,532       | 3.1                  | -51%                      |
| 2009 | 4,493           | 58%                       | 448,154        | 55%                       | 8,595       | 3.4                  | 11%                       |
| 2010 | 2,421           | -46%                      | 212,681        | -53%                      | 4,079       | 1.4                  | -60%                      |
| 2011 | 2,543           | 5%                        | 228,082        | 7%                        | 4,374       | 1.4                  | 0%                        |
| 2012 | 2,509           | -1%                       | 229,397        | 1%                        | 4,399       | 1.2                  | -13%                      |
| 2013 | 2,116           | -16%                      | 187,779        | -18%                      | 3,601       | 1.1                  | -8%                       |
| 2014 | 1,961           | -7%                       | 174,427        | -7%                       | 3,345       | 1.0                  | -11%                      |
| 2015 | 2,653           | 35%                       | 237,571        | 36%                       | 4,556       | 1.3                  | 29%                       |
| 2016 | 2,039           | -23%                      | 178,645        | -25%                      | 3,426       | 0.9                  | -28%                      |
| 2017 | 1,554           | -24%                      | 135,711        | -24%                      | 2,603       | 0.6                  | -33%                      |
| 2018 | 1,661           | 7%                        | 145,174        | 7%                        | 2,784       | 0.6                  | -9%                       |
| 2019 | 1,324           | -20%                      | 113,443        | -22%                      | 2,176       | 0.6                  | 9%                        |
| 2020 | 1,316           | -1%                       | 113,095        | 0%                        | 2,169       | 0.6                  | 0%                        |
| 2021 | 1,149           | -13%                      | 99,275         | -12%                      | 1,904       | 0.4                  | -34%                      |
| 2022 | 959             | -17%                      | 81,884         | -18%                      | 1,570       | 0.3                  | -25%                      |
| 2023 | 338             |                           | 31,287         |                           | 1,599       |                      |                           |

**Thermal Treatment Unit  
Operation Summary  
2006 - 2023**

| <b>EXTRACTION SYSTEM (2023)</b> |   |  |   |                         |                                   |   |
|---------------------------------|---|--|---|-------------------------|-----------------------------------|---|
| <b>Location</b>                 | <b>Last Instantaneous Methane Reading (%)</b> | <b>Last Instantaneous Flow Rate Reading (scfm)</b> | <b>Current Methane Removal Rate (lbs/day)</b> | <b>2023 % Operation</b> | <b>2021 Methane Removed (Lbs)</b> | <b>% Contribution of Each Extraction Source</b> |
| <b>Area E</b>                   |   |  |   |                         |                                   |   |
| EP-36                           | 34.0  | 25.0   | 501.4   | 0.8%                    | 7333.7                            | 23%   |
| <b>Area F</b>                   |   |  |   |                         |                                   |   |
| VF-3                            | 42.8  | 5.2  | 131.3   | 0.8%                    | 1721.6                            | 3%  |
| VF-4                            | 48.7  | 4.8  | 137.9   | 0.8%                    | 1851.1                            | 3%  |
| VF-5                            | 49.3  | 1.0  | 29.1  | 0.8%                    | 3800.4                            | 7%  |
| EW-31                           | 31.5  | 1.0  | 18.6  | 0.5%                    | 242.7                             | 1%  |
| EW-32                           | 38.2  | 16.7   | 376.3   | 0.8%                    | 4,620                             | 15%   |
| EW-33                           | 39.0  | 17.6   | 404.9   | 0.8%                    | 4,891                             | 16%   |
| EW-34                           | 38.3  | 20.7   | 467.6   | 0.8%                    | 5,731                             | 18%   |
| <b>Area D</b>                   |   |  |   |                         |                                   |   |
| VD-2                            | 36.5  | 3.0  | 64.6  | 0.7%                    | 704.5                             | 1%  |
| VD-3                            | 34.8  | 1.8  | 36.9  | 0.8%                    | 584.8                             | 1%  |
| <b>MIXED</b>                    |   |  |   |                         |                                   |   |
| MIXED                           | 37.3  | 96.0   | 2112.1  | 0.8%                    | 31287.0                           | 100%  |

Methane Concentration Time Series Plot  
Thermal Treatment Unit Influent  
01/01/2012 to present



\* Trend line generated from all data 1/1/14 to present