

HTW BCT, July 14, 2023

## Q2 2023 Key Events for OU2 Landfills

- Annual VOC Monitoring (completed 5/10)
- Annual Probe Monitoring (completed 5/10)
- Annual TTU Source Test (completed 5/2)
- MCHD Quarterly Inspection (completed 5/9)
- Vegetative Cover Repairs (covered 4/12)

## Q3 2023 Key Events for OU2 Landfills

- Landfill Vegetative Cover Erosion Repairs and sub-drain install (scheduled August)
- MCHD Quarterly Inspection (to be scheduled)
- Quarterly Probe Monitoring (scheduled 8/1-4)
- TTU PLC Analog and Power supply replacements (scheduled July)
- TTU Touchup Painting (scheduled September)



Ahtna

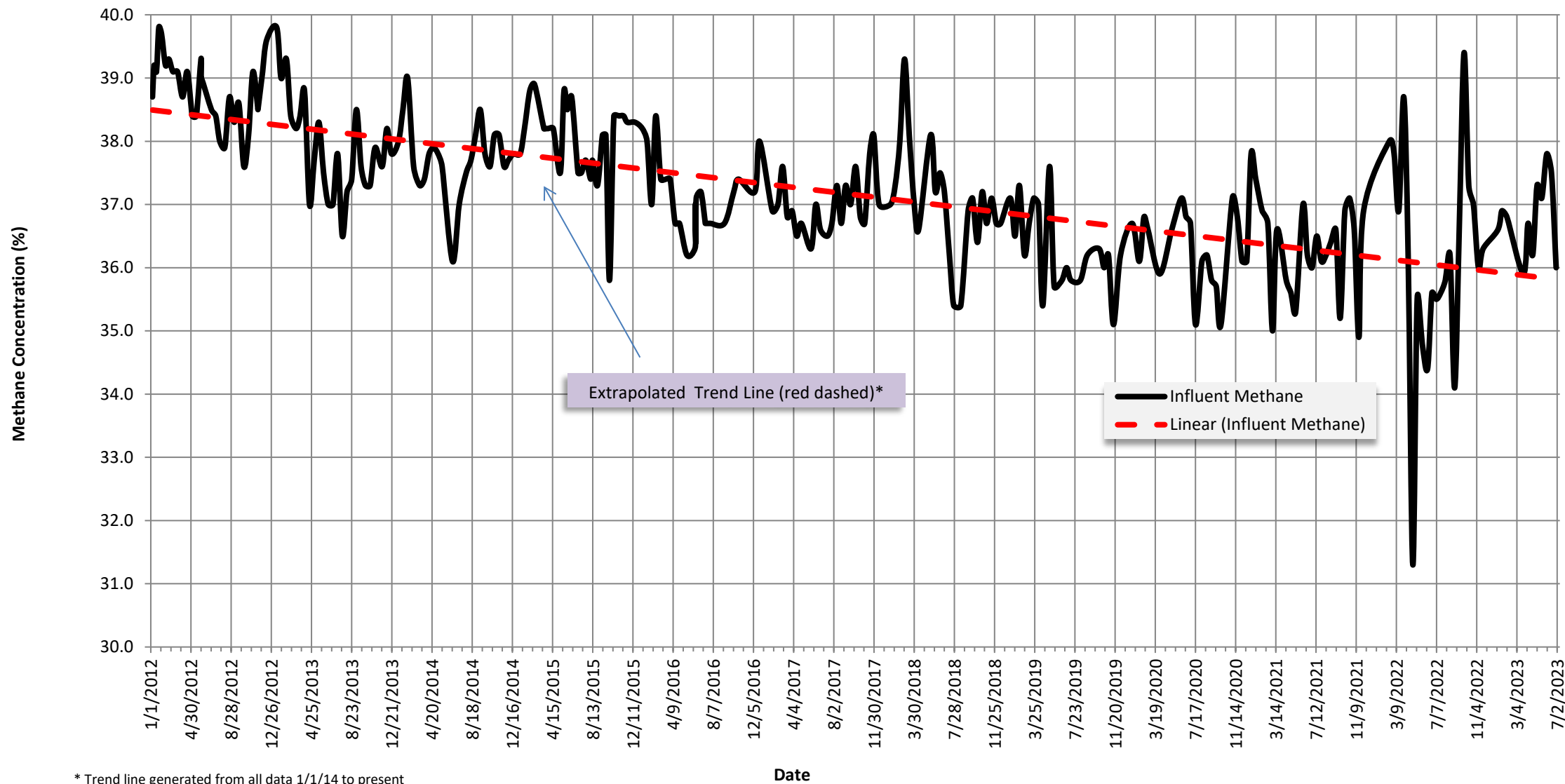
**Thermal Treatment Unit  
Operation Summary  
2006 - 2023**

Year	Operating Hours	Change from Previous Year	Methane			OU2 Groundwater COCs	
			Pounds Removed	Change from Previous Year	Pounds/week	Pounds Removed	Change from Previous Year
2007	4,035		532,130		10,205	6.2	
2008	2,838	-30%	288,458	-46%	5,532	3.1	-51%
2009	4,493	58%	448,154	55%	8,595	3.4	11%
2010	2,421	-46%	212,681	-53%	4,079	1.4	-60%
2011	2,543	5%	228,082	7%	4,374	1.4	0%
2012	2,509	-1%	229,397	1%	4,399	1.2	-13%
2013	2,116	-16%	187,779	-18%	3,601	1.1	-8%
2014	1,961	-7%	174,427	-7%	3,345	1.0	-11%
2015	2,653	35%	237,571	36%	4,556	1.3	29%
2016	2,039	-23%	178,645	-25%	3,426	0.9	-28%
2017	1,554	-24%	135,711	-24%	2,603	0.6	-33%
2018	1,661	7%	145,174	7%	2,784	0.6	-9%
2019	1,324	-20%	113,443	-22%	2,176	0.6	9%
2020	1,316	-1%	113,095	0%	2,169	0.6	0%
2021	1,158	-12%	99,275	-12%	1,904	0.4	-34%
2022	959	-17%	81,884	-18%	1,570	0.3	-25%
2023	596		53,738		1,969		

**Thermal Treatment Unit  
Operation Summary  
2006 - 2023**

<b>EXTRACTION SYSTEM (2023)</b>						
<b>Location</b>	<b>Last Instantaneous Methane Reading (%)</b>	<b>Last Instantaneous Flow Rate Reading (scfm)</b>	<b>Current Methane Removal Rate (lbs/day)</b>	<b>2023 % Operation</b>	<b>2021 Methane Removed (Lbs)</b>	<b>% Contribution of Each Extraction Source</b>
<b>Area E</b>						
EP-36	32.0	25.0	471.9	1.3%	12403.3	23%
<b>Area F</b>						
VF-3	42.2	5.2	129.4	1.3%	3036.3	3%
VF-4	48.0	5.3	150.1	1.3%	3016.3	3%
VF-5	47.9	3.8	107.4	1.3%	4475.2	5%
EW-31	29.9	1.0	17.6	1.0%	433.0	1%
EW-32	38.1	16.6	373.1	1.3%	8,622	16%
EW-33	39.1	17.1	394.4	1.3%	9,184	17%
EW-34	38.1	19.9	447.2	1.3%	10,744	20%
<b>Area D</b>						
VD-2	36.2	2.0	42.7	1.2%	1002.7	1%
VD-3	35.0	1.0	20.6	1.3%	1222.1	1%
<b>MIXED</b>						
MIXED	36.0	96.0	2038.5	1.3%	53033.4	100%

Methane Concentration Time Series Plot  
Thermal Treatment Unit Influent  
01/01/2012 to present



\* Trend line generated from all data 1/1/14 to present