

HTW BCT, October 27, 2023

Q3 2023 Key Events for OU2 Landfills

- Landfill Vegetative Cover Erosion Repairs and sub-drain install (completed 9/11)
- MCHD Quarterly Inspection (completed 9/8)
- Quarterly Probe Monitoring (completed 8/2)
- TTU PLC Analog and Power supply replacements (completed 8/25)

Q4 2023 Key Events for OU2 Landfills

- TTU Repairs (completed 10/25)
- MCHD Quarterly Inspection (to be scheduled)
- Quarterly Probe Monitoring (scheduled 11/27-29)
- Landfill mowing (scheduled 10/23)
- Owl Box cleaning (scheduled early November)



Ahtna

HTW BCT, October 27, 2023

Geomembrane Tear

- Uncovered during trenching operation to install new subdrain
- Location of tear at transition between rough and smooth geomembrane
- Location had two overlapping layers of geomembrane; only upper layer of geomembrane was torn
- Small tear (approximately 6" long)
- Repaired the next day



Ahtna

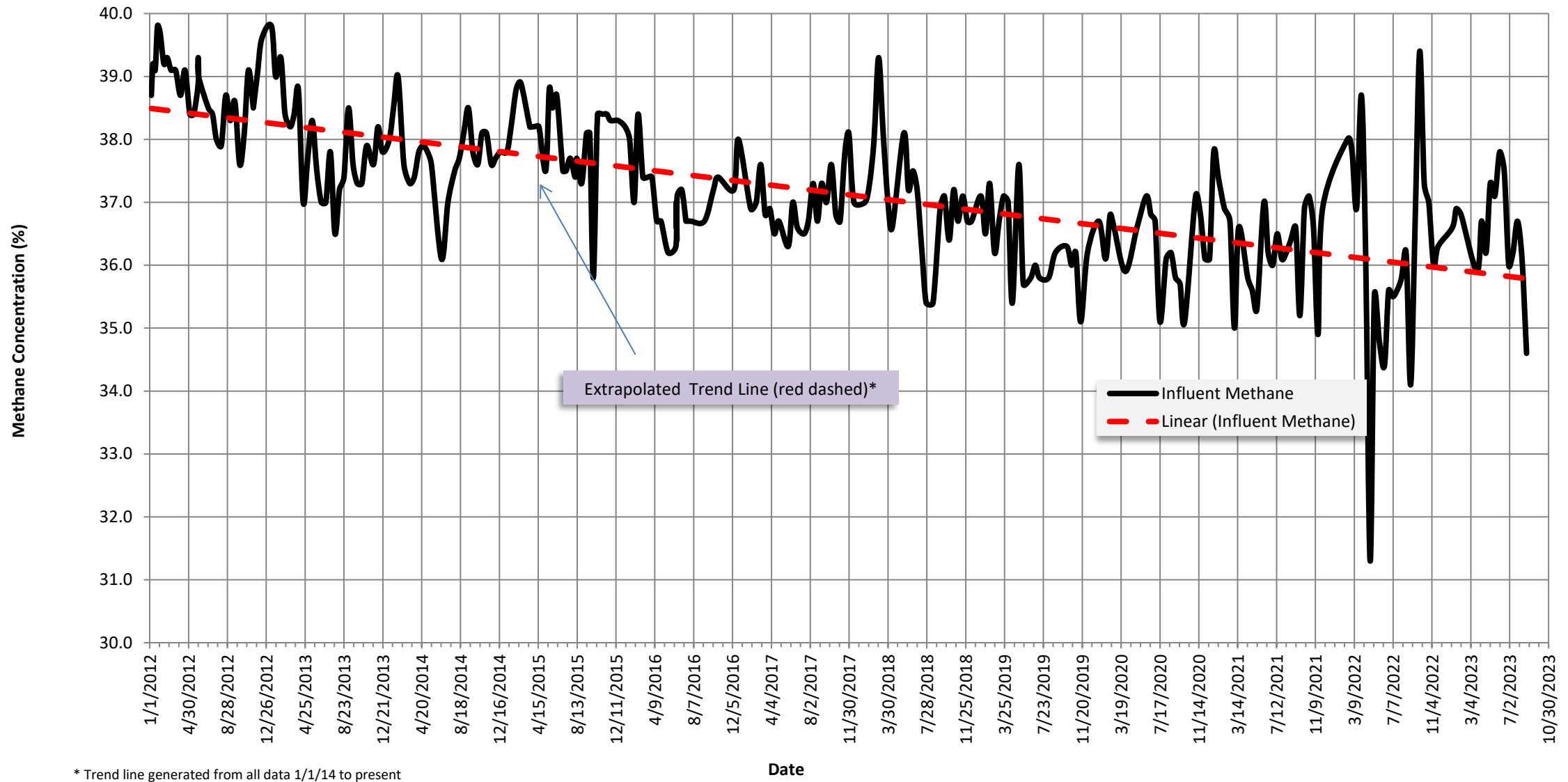
**Thermal Treatment Unit
Operation Summary
2006 - 2023**

Year	Operating Hours	Change from Previous Year	Methane			OU2 Groundwater COCs	
			Pounds Removed	Change from Previous Year	Pounds/week	Pounds Removed	Change from Previous Year
2007	4,035		532,130		10,205	6.2	
2008	2,838	-30%	288,458	-46%	5,532	3.1	-51%
2009	4,493	58%	448,154	55%	8,595	3.4	11%
2010	2,421	-46%	212,681	-53%	4,079	1.4	-60%
2011	2,543	5%	228,082	7%	4,374	1.4	0%
2012	2,509	-1%	229,397	1%	4,399	1.2	-13%
2013	2,116	-16%	187,779	-18%	3,601	1.1	-8%
2014	1,961	-7%	174,427	-7%	3,345	1.0	-11%
2015	2,653	35%	237,571	36%	4,556	1.3	29%
2016	2,039	-23%	178,645	-25%	3,426	0.9	-28%
2017	1,554	-24%	135,711	-24%	2,603	0.6	-33%
2018	1,661	7%	145,174	7%	2,784	0.6	-9%
2019	1,324	-20%	113,443	-22%	2,176	0.6	9%
2020	1,316	-1%	113,095	0%	2,169	0.6	0%
2021	1,149	-13%	99,275	-12%	1,904	0.4	-34%
2022	959	-17%	81,884	-18%	1,570	0.3	-25%
2023	791		161,811		3,906		

**Thermal Treatment Unit
Operation Summary
2006 - 2023**

EXTRACTION SYSTEM (2023)						
Location	Last Instantaneous Methane Reading (%)	Last Instantaneous Flow Rate Reading (scfm)	Current Methane Removal Rate (lbs/day)	2023 % Operation	2021 Methane Removed (Lbs)	% Contribution of Each Extraction Source
Area E						
EP-36	31.2	25.0	460.1	1.6%	15088.3	21%
Area F						
VF-3	40.7	6.3	151.2	1.6%	4158.2	3%
VF-4	46.2	6.4	174.4	1.6%	4327.4	4%
VF-5	45.1	5.3	141.0	1.6%	5764.5	5%
EW-31	28.7	2.8	47.4	1.3%	577.2	1%
EW-32	36.8	15.3	332.1	1.6%	11,293	16%
EW-33	38.1	16.4	368.6	1.6%	12,096	17%
EW-34	37.1	18.6	407.0	1.6%	13,983	20%
Area D						
VD-2	35.5	4.9	102.6	1.5%	1788.8	1%
VD-3	35.1	3.4	70.4	1.6%	1949.0	2%
MIXED						
MIXED	34.6	96.0	1959.2	1.6%	68622.9	100%

Methane Concentration Time Series Plot
Thermal Treatment Unit Influent
01/01/2012 to present



* Trend line generated from all data 1/1/14 to present