

HTW BCT, May 10, 2024

## Q1 2024 Key Events for OU2 Landfills

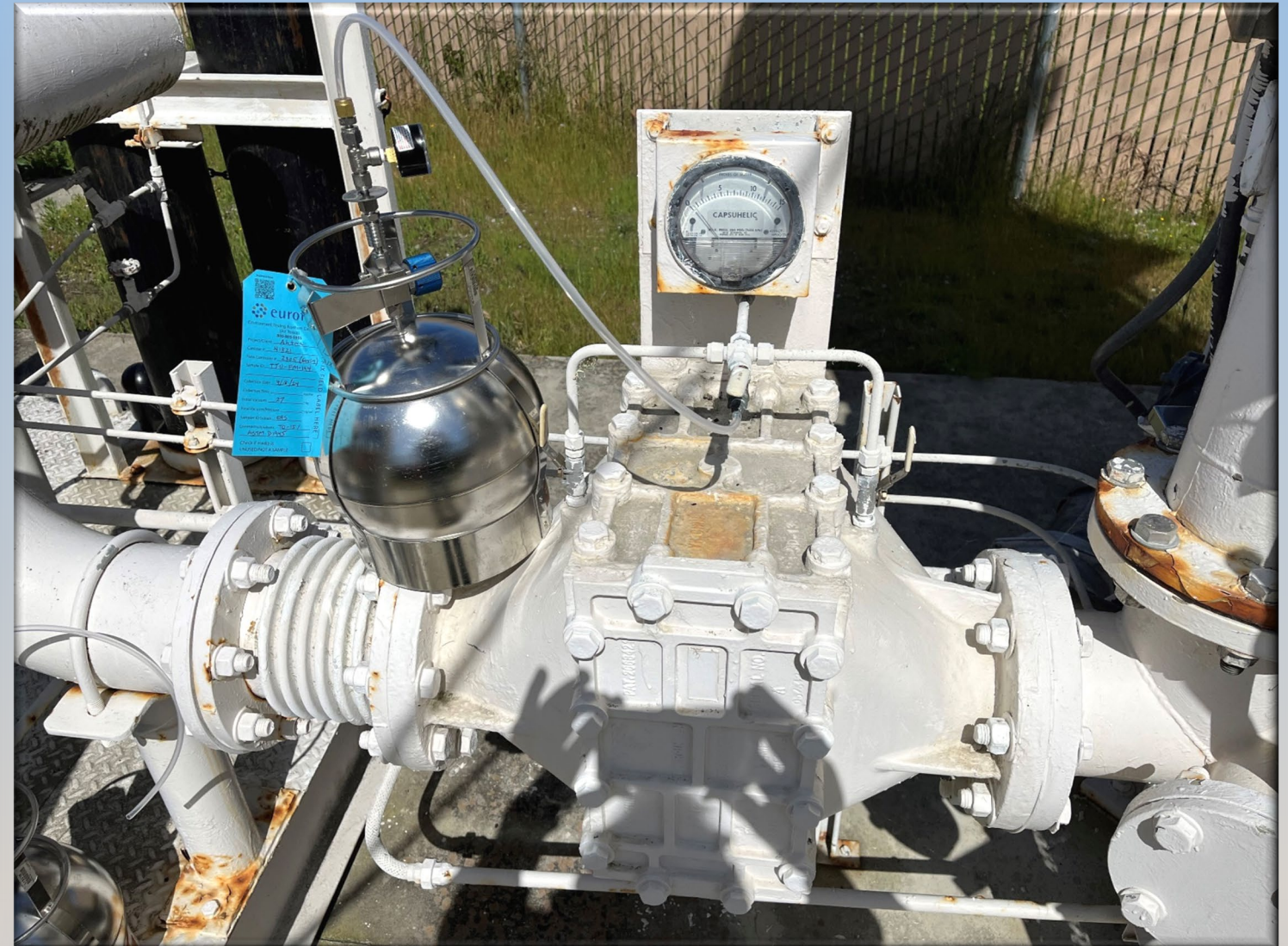
- MCHD Quarterly Inspection (completed 3/14)
- Quarterly Probe Monitoring (completed 2/21-23)
- Erosion mitigation Area F

## Q2 2024 Key Events for OU2 Landfills

- Quarterly Probe Monitoring (completed 4/17-18)
- Annual VOC Monitoring (completed 4/18)
- TTU Source Test (completed 4/18)
- MCHD Quarterly Inspection (to be scheduled)

## Q3 2024 Key Events for OU2 Landfills

- Erosion repair Area F
- Landfill mowing
- MCHD Quarterly Inspection (to be scheduled)



Ahtna

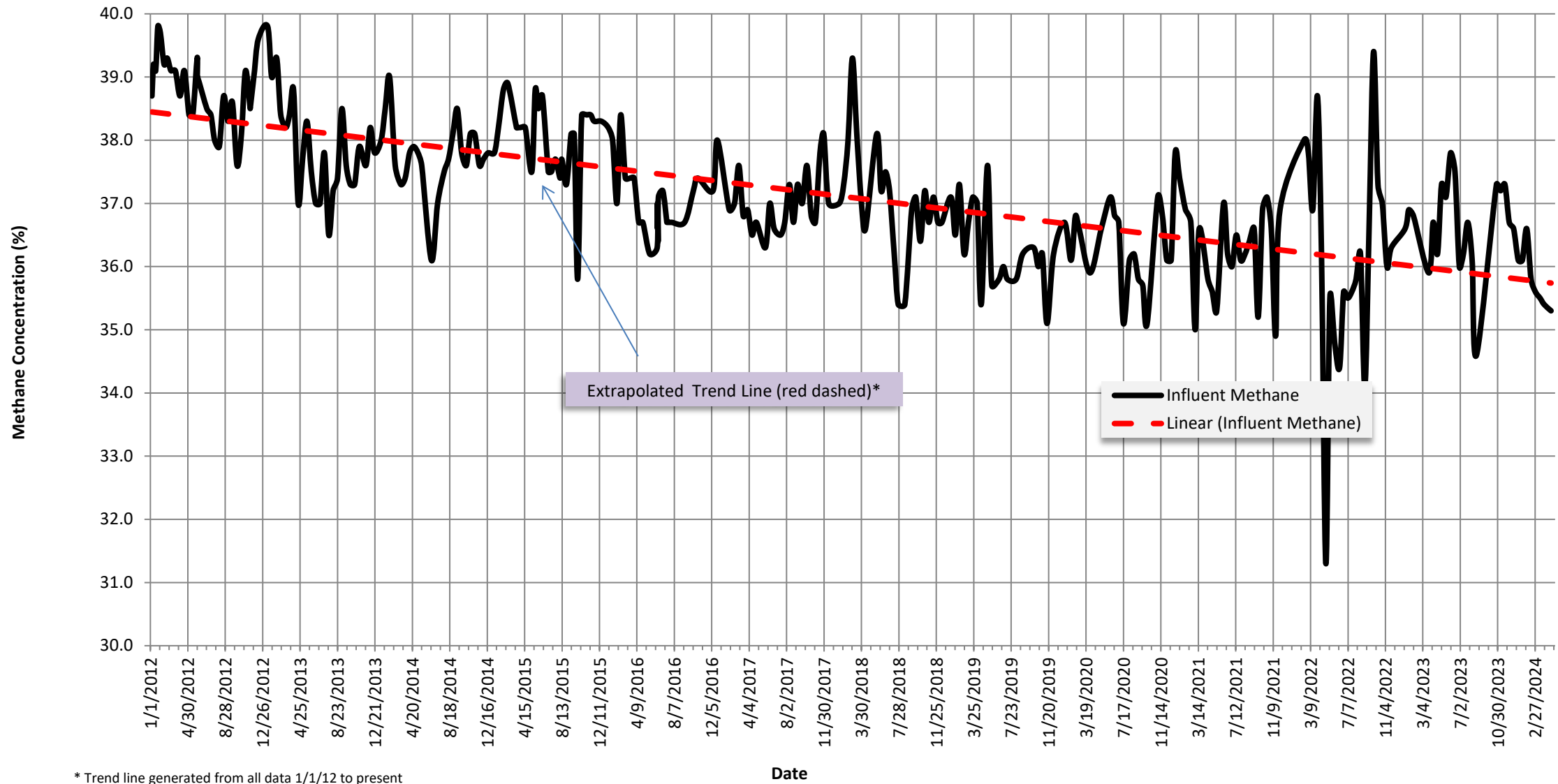
**Thermal Treatment Unit  
Operation Summary  
2006 - 2024**

Year	Operating Hours	Change from Previous Year	Methane			OU2 Groundwater COCs	
			Pounds Removed	Change from Previous Year	Pounds/week	Pounds Removed	Change from Previous Year
2007	4,035		532,130		10,205	6.2	
2008	2,838	-30%	288,458	-46%	5,532	3.1	-51%
2009	4,493	58%	448,154	55%	8,595	3.4	11%
2010	2,421	-46%	212,681	-53%	4,079	1.3	-62%
2011	2,543	5%	228,082	7%	4,374	1.4	6%
2012	2,509	-1%	229,397	1%	4,399	1.2	-13%
2013	2,116	-16%	187,779	-18%	3,601	1.1	-8%
2014	1,961	-7%	174,427	-7%	3,345	1.0	-11%
2015	2,653	35%	237,571	36%	4,556	1.2	22%
2016	2,039	-23%	178,645	-25%	3,426	0.9	-24%
2017	1,554	-24%	135,711	-24%	2,603	0.5	-45%
2018	1,661	7%	145,174	7%	2,784	0.6	11%
2019	1,324	-20%	113,443	-22%	2,176	0.5	-10%
2020	1,316	-1%	113,095	0%	2,169	1.8	260%
2021	1,158	-12%	99,275	-12%	1,904	1.2	-33%
2022	959	-17%	81,884	-18%	1,570	0.5	-58%
2023	1,094	14%	91,694	12%	1,759	0.6	20%
2024	406	--	34,285		1,967		

**Thermal Treatment Unit  
Operation Summary  
2006 - 2024**

<b>EXTRACTION SYSTEM (2023)</b>						
<b>Location</b>	<b>Last Instantaneous Methane Reading (%)</b>	<b>Last Instantaneous Flow Rate Reading (scfm)</b>	<b>Current Methane Removal Rate (lbs/day)</b>	<b>2023 % Operation</b>	<b>2021 Methane Removed (Lbs)</b>	<b>% Contribution of Each Extraction Source</b>
<b>Area E</b>						
EP-36	31.4	25.0	463.0	2.5%	27135.0	22%
<b>Area F</b>						
VF-3	41.4	5.6	136.7	2.5%	7840.2	4%
VF-4	46.6	5.3	145.7	2.5%	8079.5	4%
VF-5	46.5	4.4	120.7	2.5%	8806.6	4%
EW-31	29.1	1.9	32.6	2.3%	1742.2	1%
EW-32	37.0	13.9	303.4	2.5%	19,495	16%
EW-33	38.1	14.7	330.4	2.5%	21,312	17%
EW-34	37.7	17.4	386.9	2.5%	24,150	19%
<b>Area D</b>						
VD-2	35.0	4.4	90.8	2.5%	3679.4	2%
VD-3	33.4	3.8	74.9	2.5%	3436.8	2%
<b>MIXED</b>						
MIXED	35.3	96.0	1998.9	2.5%	120879.5	100%

Methane Concentration Time Series Plot  
Thermal Treatment Unit Influent  
01/01/2012 to present



\* Trend line generated from all data 1/1/12 to present