

KEMRON TO MR Status
Fort Ord MR BCT
September 21, 2022

UNIT 5 REMEDIAL ACTION STATUS UPDATE

- Unit 5 surface MEC removal field work began on 7/18/22 and is nearing completion.
- No Unit 5 documents are currently in preparation.

FIELD ACTIVITIES

Surface MEC Removal

- As of 9/19/22, surface removal in Unit 5 was 98% complete (122.1 out of 124.7 acres cleared).
- The expected completion date for surface removal is 9/23/22.

MPPEH Finds

- During surface removal to date, 20 MPPEH items have been discovered in Unit 5:
 - projectile, 75mm, HE, MK I (2)
 - projectile, 75mm, HE, M48 (2)
 - projectile, 75mm, Shrapnel, MK I (2)
 - projectile, 37mm, LE, MK I (4)
 - projectile, 37mm, LE, MK II (5)
 - grenade, hand, prac, M69 (2)
 - projo, 40mm, HE, M383 (3)
- The first 17 items have been placed in secure storage in the ESL.

Demolition Operations

- The 3 - 40mm rounds were destroyed via blow-in-place operations on 8/4, 8/15, and 8/18/22.
- There are currently 21 items in storage at ESL awaiting demolition operations, including the projo, 8-inch, HE, M106 found during mastication last year.
- A consolidation shot is planned on 9/26/22 at the conclusion of the subsurface MEC removal in Pond 21. Mowing of the immediate demo area was completed on 9/19/22.

MD Scrap Sorting and Recycling

- MD scrap sorting will be performed in the last week of Sept. (4,231 lbs collected thru 9/19/22).
- MD scrap final MDAS certification and arrangements for recycling will be performed later.

Digital Geophysical Mapping

- The preparatory meeting for the Unit 5 DGM and the subsurface MEC removal in Pond 21 was conducted on 9/12/22.
- As of 9/19/22, DGM in Unit 5 was 3% complete (3.3 out of 123.7 acres surveyed).
- The expected completion date for DGM is 11/29/22.

Subsurface MEC Removal in Pond 21

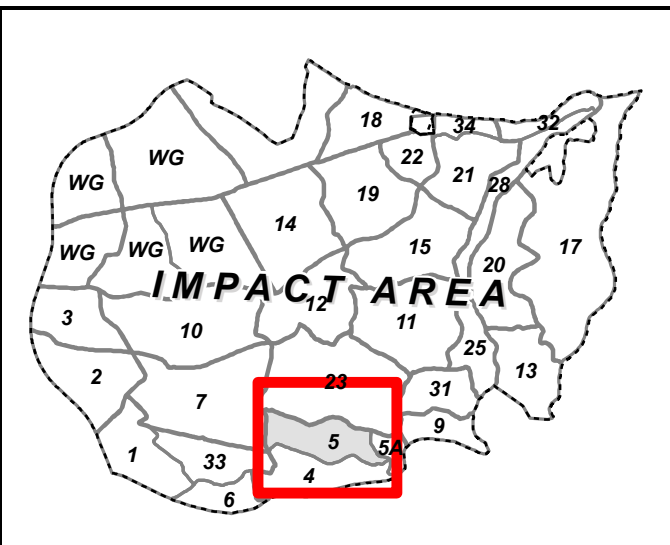
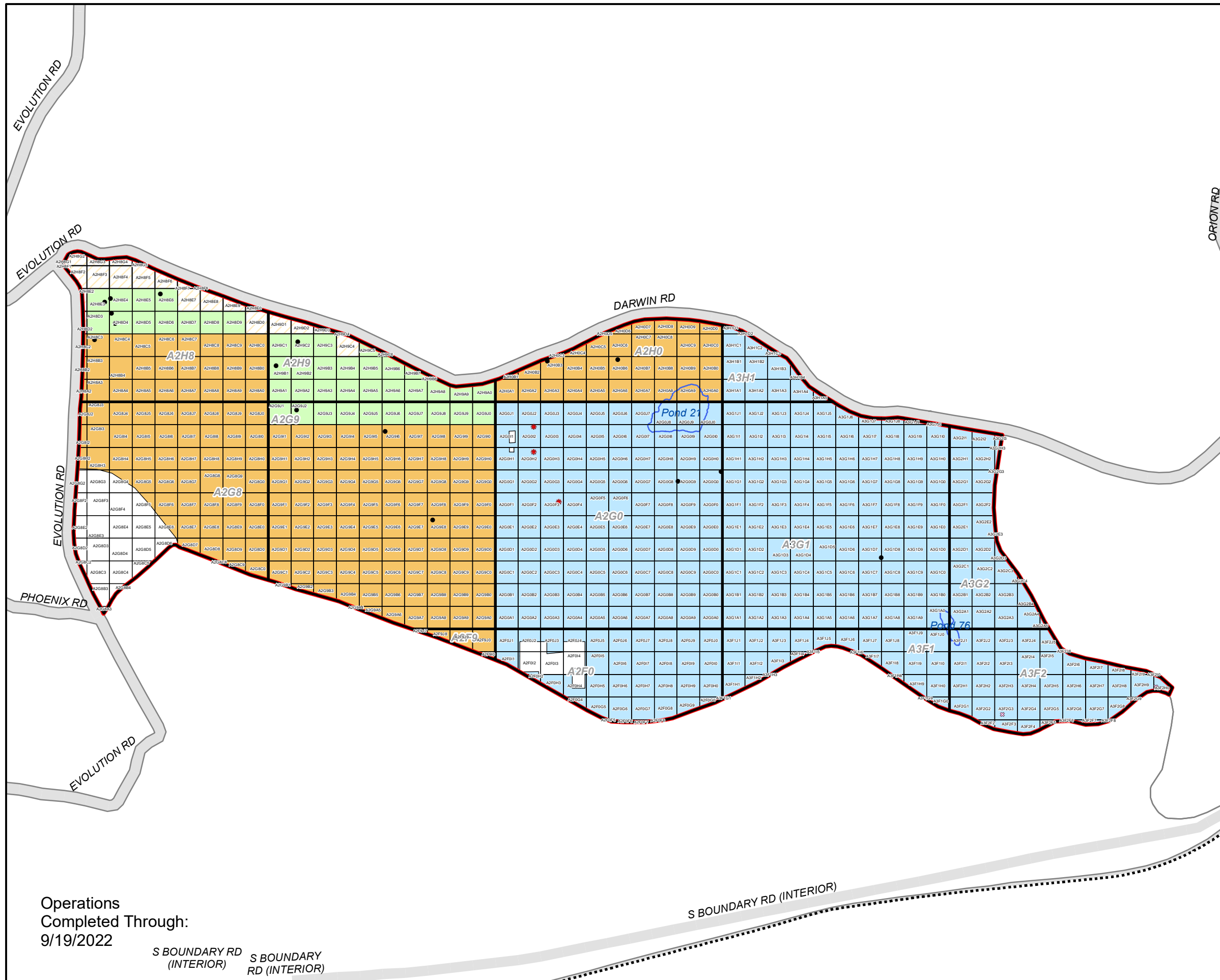
- The subsurface removal operation in Pond 21 is expected to take up to 4 days, and field operations began on 9/19/22.
- There were 80 targets identified by USACE from its EM-61 pond survey with some small data gap areas (0.08 acres) where previous vegetation prevented surveying.
- No QA seeds will be placed by USACE to minimize pond disturbance.
- A USACE Field Geologist, Jess Parker, is implementing the vernal pond investigation procedures regarding soil characterization, logging, segregation, and replacement after target digging.
- As of 9/19/22, the pond target investigations were 21% complete (17 of 80 targets excavated), and data gap areas had not yet begun.

Basewide Range Assessment

- Upon completion of surface removal, potential weigh points observed will be provided to the BRA planning team for inclusion in the proposed BRA walking path through Unit 5.
- Finalization of the BRA Site Recon Work Plan will then take place, and the 2-day field effort is expected to occur in early October.

2022 ANNUAL SURFACE MONITORING UPDATE

- The project was awarded on 8/31/22.
- Currently working on preparation of the Pre-Draft 2022 ASM Work Plan.
- The same 14 units monitored in 2021 will be monitored this year.
- Kevin Siemann has returned to the team and will now serve in role of Technical Writer/Editor.
- Key near-term schedule milestone dates (per the approved TO 04 proposal):
 - Pre-Draft 1 2022 ASM Work Plan 10/15/22
- ASM field work planned to be completed before Christmas.



Legend

- * Live (LIP, Destroyed)
- DMM (CP)
- MPPEH (CP)
- Impact Area
- Unit Boundary
- Fuel Breaks

Surface MEC Removal Status

- To Be Surveyed
- Surface Removal Complete
- Surface QC Complete
- Surface QA Complete



U.S. ARMY CORPS OF ENGINEERS
SACRAMENTO DISTRICT

Kemron
ENVIRONMENTAL SERVICES

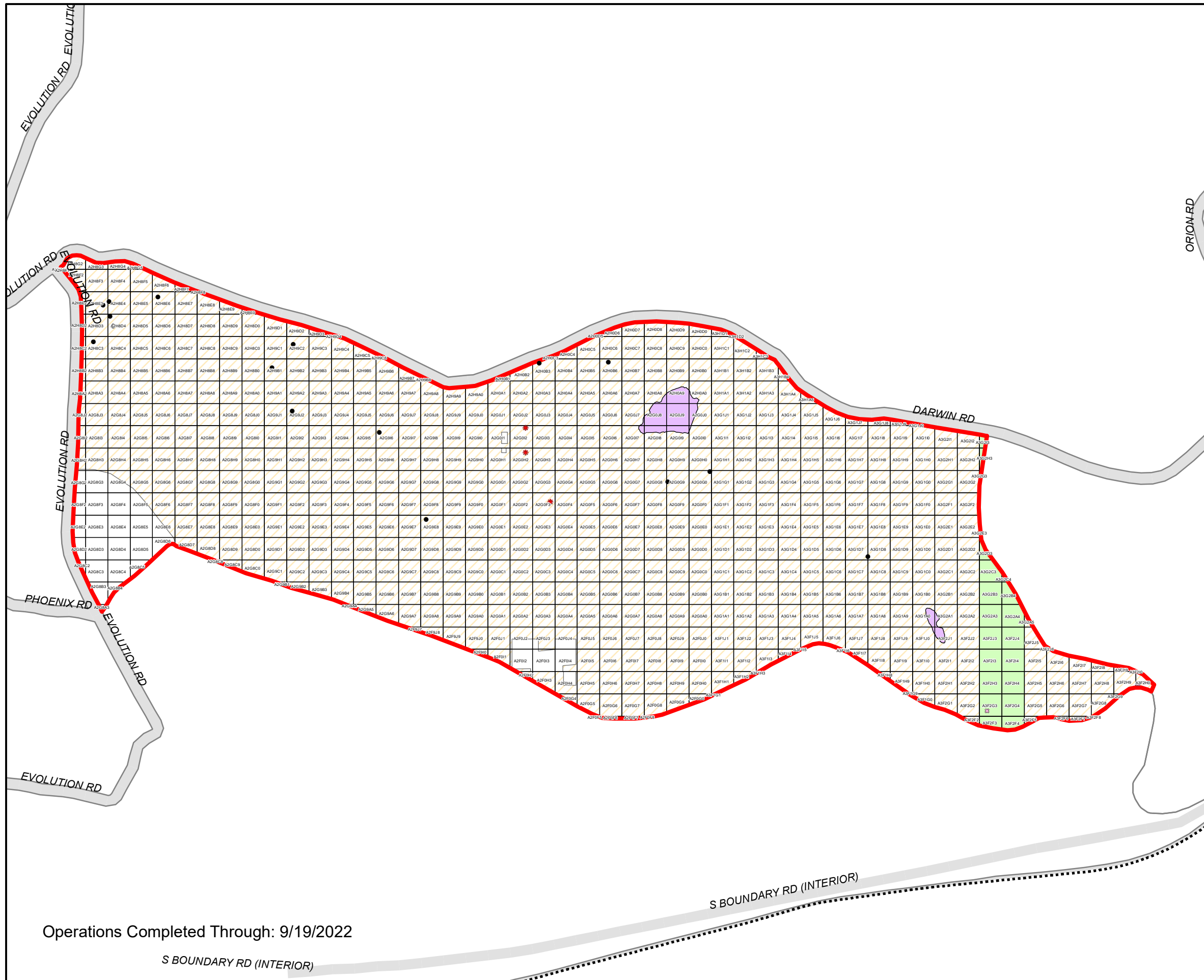
NAEVA GEOPHYSICS INC.
Subsurface Geophysical Surveys

FORMER FORT ORD
Unit 5 Surface MEC Removal Status

Operations
Completed Through:
9/19/2022

S BOUNDARY RD
(INTERIOR) S BOUNDARY
RD (INTERIOR)

S BOUNDARY RD (INTERIOR)

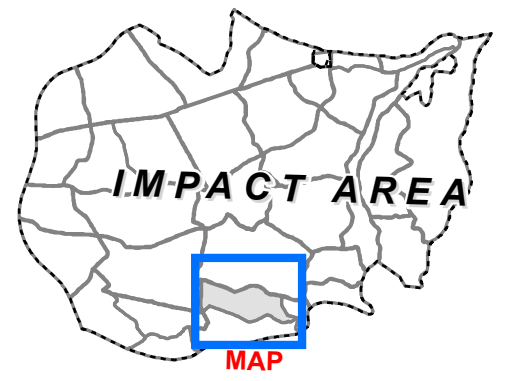


Operations Completed Through: 9/19/2022

S BOUNDARY RD (INTERIOR)

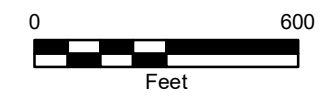


U.S. ARMY CORPS OF ENGINEERS
SACRAMENTO DISTRICT



Legend

- ★ Live (LIP, Destroyed)
- DMM (CP)
- MPPEH (CP)
- 100x100ft Grids
- ⋯ Impact Area
- ▭ Unit Boundary
- ▭ Burn_Unit_Outline
- ▭ Roads
- ▭ Fuel Breaks
- ▭ To Be Surveyed
- DGM Survey Status**
- ▭ Field Collection Complete
- ▭ Data Processing Complete
- ▭ Data QC Complete
- ▭ Data QA Complete
- ▭ PP DGM Complete



FORMER FORT ORD
Unit 5
DGM Survey Status