

Former Fort Ord Operable Unit 2 Landfills Data and Status

HTW BCT, May 9, 2018

Reddish-orange to brown runoff with some iridescent sheen, but no odor, observed on Area F in April 2017; runoff observed and samples collected April 13 for TPH and pesticides analyses.

Analytes	Analytical Method	Result
Diesel (C10-C24)	EPA 8015D	100 Y
Diesel (C10-C24) with silica gel cleanup	EPA 8015D	21 J,Y
Motor Oil (C24-36)	EPA 8015D	ND
Motor Oil (C24-36) with silica gel cleanup	EPA 8015D	ND
Pesticides	EPA 8081B	ND

Possible occupation of owl boxes on northeastern side of Area D and southwest corner of Area E.



**Thermal Treatment Unit
Operation Summary
2006 - 2018**

TREATMENT SYSTEM OPERATION SUMMARY	
Treatment System Start Date:	6/4/2001
TTU Start Date:	4/4/2006
Last Reading Date/Time:	4/12/2018 14:13
Historical through 2017 (TTU only):	
Total TTU Hours:	102,912
Total TTU Hours Operated:	32,645
% TTU Operation:	31.7%
Total Pounds of Methane Removed:	3,411,991
Current Year 2018:	
Total Hours:	2,448
Total Hours Operated:	535
% TTU Operation:	22%
Total Pounds of Methane Removed:	47,437
Cumulative (since TTU startup in 2006):	
% TTU Operation:	31.5%
Total Pounds of Methane Removed:	3,459,428

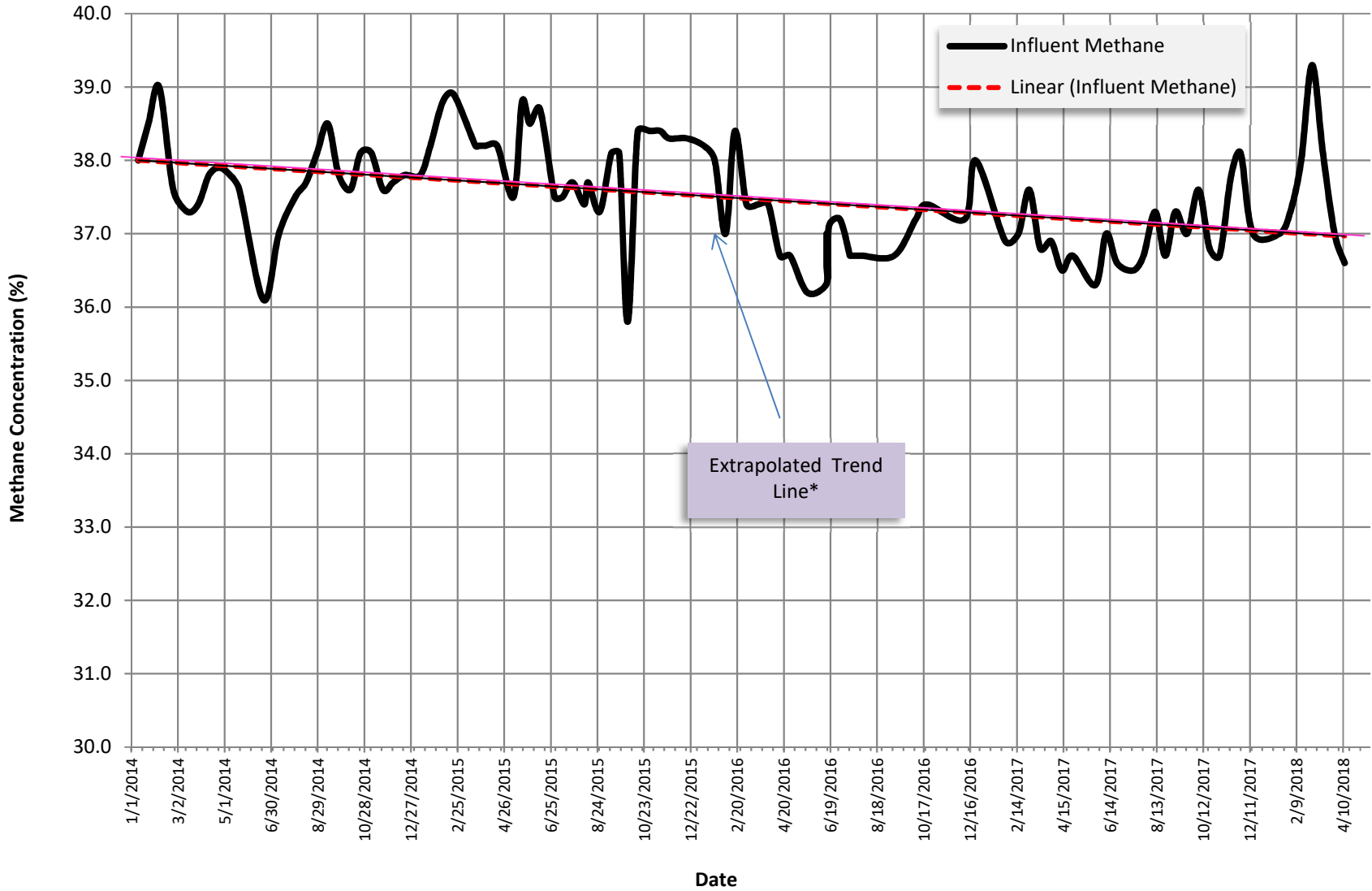
Year	Operating Hours	Change from Previous Year	Methane			OU2 Groundwater COCs	
			Pounds Removed	Change from Previous Year	Pounds/week	Pounds Removed	Change from Previous Year
2007	4,035		532,130		10,205	6.2	
2008	2,838	-30%	288,458	-46%	5,532	3.1	-51%
2009	4,493	58%	448,154	55%	8,595	3.4	11%
2010	2,421	-46%	212,681	-53%	4,079	1.4	-60%
2011	2,543	5%	228,082	7%	4,374	1.4	0%
2012	2,509	-1%	229,397	1%	4,399	1.2	-13%
2013	2,116	-16%	187,779	-18%	3,601	1.1	-8%
2014	1,961	-7%	174,427	-7%	3,345	1.0	-11%
2015	2,653	35%	237,571	36%	4,556	1.3	29%
2016	2,039	-23%	178,645	-25%	3,426	0.9	-28%
2017	1,554	-24%	183,148	3%	3,512	0.6	-52%

**Thermal Treatment Unit
Operation Summary
2006 - 2018**

2018	535		47,437		910	0.6	-33%
------	-----	--	--------	--	-----	-----	------

EXTRACTION SYSTEM (2016)						
Location	Last Instantaneous Methane Reading (%)	Last Instantaneous Flow Rate Reading (scfm)	Current Methane Removal Rate (lbs/day)	2018 % Operation	2018 Methane Removed (Lbs)	% Contribution of Each Extraction Source
Area E						
EP-36	27.6	25	407	22%	11,199	20%
Area F						
EW-31	30.2	6.0	106.9	22%	2,064	4%
EW-32	35.9	26.0	550.6	22%	9,493	17%
EW-33	36.8	17.0	369.0	22%	8,435	15%
EW-34	36.3	31.0	663.7	22%	15,658	28%
VF-3	40.9	8.0	193.0	22%	3,618	6%
VF-4	47.8	7.0	197.4	22%	3,429	7%
VF-5	46.0	6.0	162.8	22%	1,191	2%
Area D						
VD-2	39.4	1	23	22%	1,041	2%
VD-3	35.1	4.0	82.8	22%	793	1%
MIXED						
MIXED	36.6	96.0	2072.5	22%	47,437	100%

Methane Concentration Time Series Plot
OU2 Landfill Extraction Sources
01/01/2014 to present

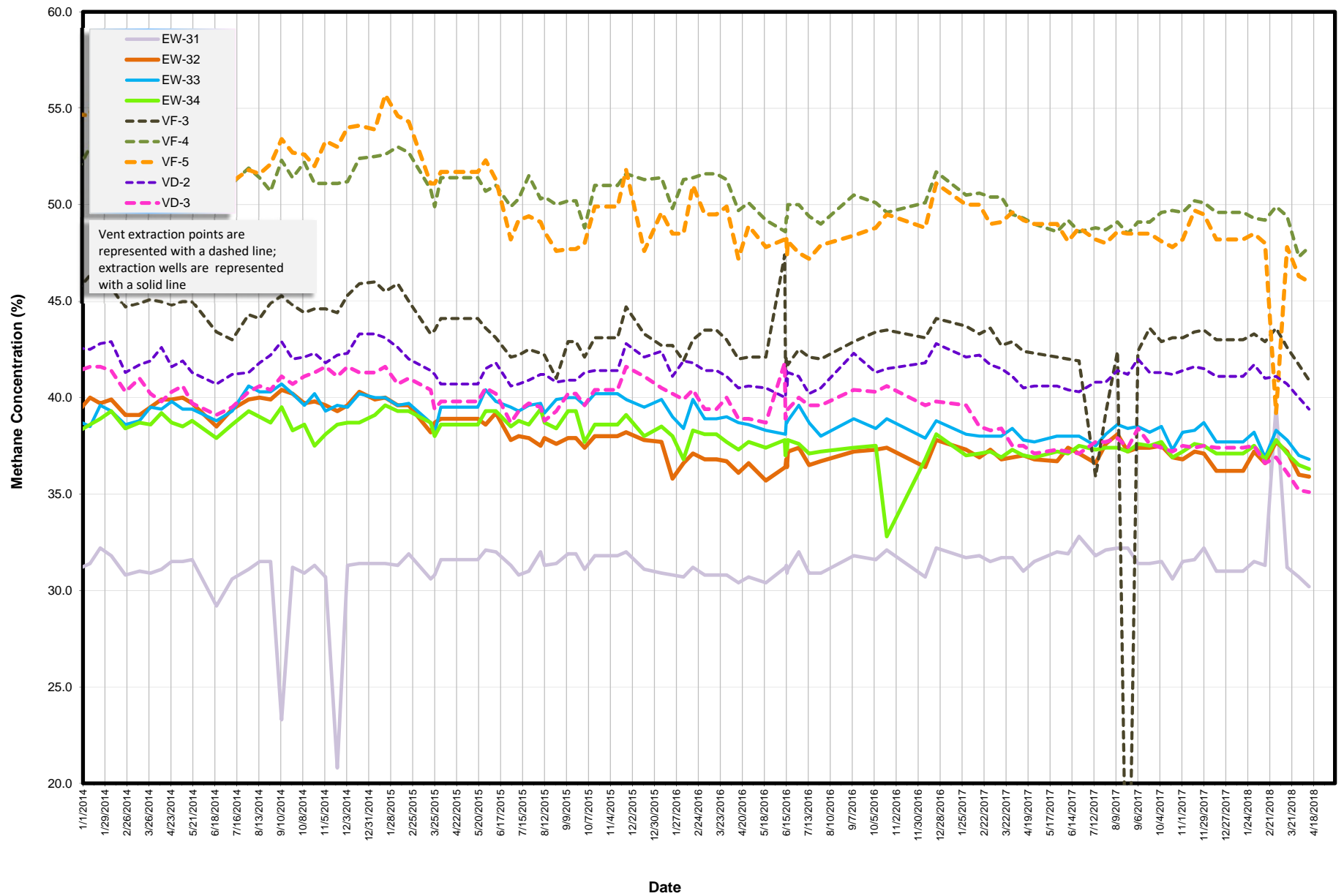


* Trend line generated from all data 1/1/14 to present

Methane Concentration vs. Time

OU2 Landfill Extraction Sources

1/1/2011 to present



Methane Concentration vs. Time

OU2 Landfill Extraction Sources

1/1/2011 to present

