

HTW BCT, January 9, 2019

## December 2018 Key Events for OU2 Landfills

- December 11: Monterey County Health Department quarterly inspection.
- TTU operations.

## January 2019 Key Events for OU2 Landfills

- TTU operations.
- Disposal of LBP-contaminated materials in Area E.



Stockpile of trench spoils from MCWD recycled water project.

**Thermal Treatment Unit  
Operation Summary  
2006 - 2018**

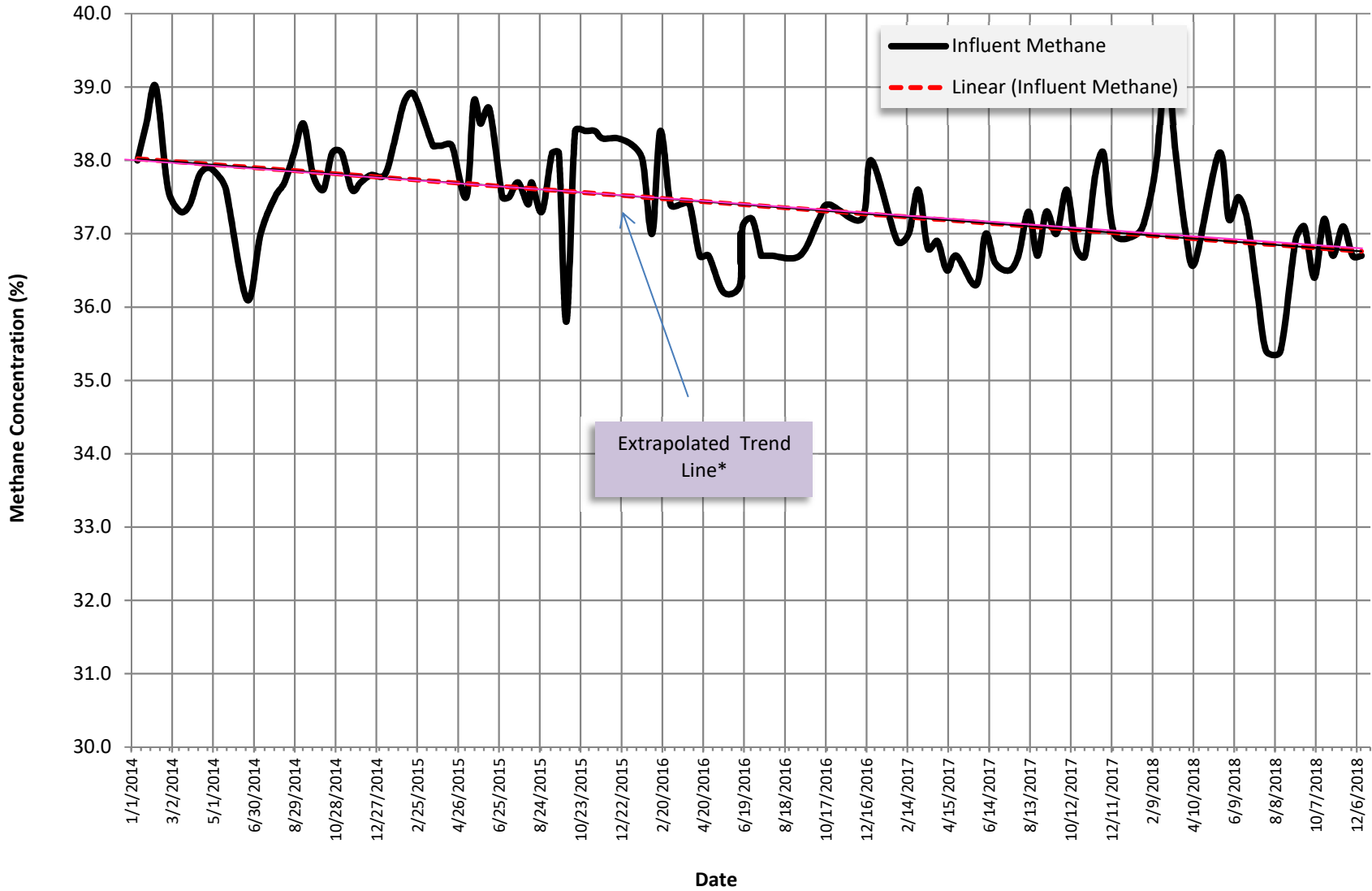
<b>TREATMENT SYSTEM OPERATION SUMMARY</b>	
<b>Treatment System Start Date:</b>	<b>6/4/2001</b>
<b>TTU Start Date:</b>	<b>4/4/2006</b>
<b>Last Reading Date/Time:</b>	<b>12/13/2018 14:39</b>
<b>Historical through 2017 (TTU only):</b>	
Total TTU Hours:	<b>102,912</b>
Total TTU Hours Operated:	<b>33,771</b>
% TTU Operation:	<b>32.8%</b>
Total Pounds of Methane Removed:	<b>3,509,729</b>
<b>Current Year 2018:</b>	
Total Hours:	<b>8,664</b>
Total Hours Operated:	<b>1,661</b>
% TTU Operation:	<b>19%</b>
Total Pounds of Methane Removed:	<b>145,175</b>
<b>Cumulative (since TTU startup in 2006):</b>	
% TTU Operation:	<b>31.8%</b>
Total Pounds of Methane Removed:	<b>3,654,904</b>

Year	Operating Hours	Change from Previous Year	Methane			OU2 Groundwater COCs	
			Pounds Removed	Change from Previous Year	Pounds/week	Pounds Removed	Change from Previous Year
2007	4,035		532,130		10,205	6.2	
2008	2,838	-30%	288,458	-46%	5,532	3.1	-51%
2009	4,493	58%	448,154	55%	8,595	3.4	11%
2010	2,421	-46%	212,681	-53%	4,079	1.4	-60%
2011	2,543	5%	228,082	7%	4,374	1.4	0%
2012	2,509	-1%	229,397	1%	4,399	1.2	-13%
2013	2,116	-16%	187,779	-18%	3,601	1.1	-8%
2014	1,961	-7%	174,427	-7%	3,345	1.0	-11%
2015	2,653	35%	237,571	36%	4,556	1.3	29%
2016	2,039	-23%	178,645	-25%	3,426	0.9	-28%
2017	1,554	-24%	280,886	57%	5,387	0.6	-33%
2018	1,661	7%	145,175	-48%	2,784	0.6	-9%

**Thermal Treatment Unit  
Operation Summary  
2006 - 2018**

<b>EXTRACTION SYSTEM (2018)</b>						
<b>Location</b>	<b>Last Instantaneous Methane Reading (%)</b>	<b>Last Instantaneous Flow Rate Reading (scfm)</b>	<b>Current Methane Removal Rate (lbs/day)</b>	<b>2018 % Operation</b>	<b>2018 Methane Removed (Lbs)</b>	<b>% Contribution of Each Extraction Source</b>
<b>Area E</b>						
EP-36	30.7	25.0	452.7	0.2	35346.2	20%
<b>Area F</b>						
EW-31	30.3	1.0	17.9	0.2	3306.4	2%
EW-32	36.4	23.0	493.8	20%	31,148	18%
EW-33	37.3	17.0	374.0	20%	25,088	14%
EW-34	36.7	32.0	692.7	20%	45,447	26%
VF-3	41.6	7.0	171.8	0.2	10999.2	6%
VF-4	48.1	5.0	141.9	0.2	10324.1	6%
VF-5	46.0	1.0	27.1	20%	6072.4	3%
<b>Area D</b>						
VD-2	39.6	3.0	70.1	0.2	3429.2	2%
VD-3	35.3	4.0	83.3	0.2	3531.8	2%
<b>MIXED</b>						
MIXED	36.7	96.0	2078.1	0.2	145174.5	100%

**Methane Concentration Time Series Plot**  
**OU2 Landfill Extraction Sources**  
**01/01/2014 to present**

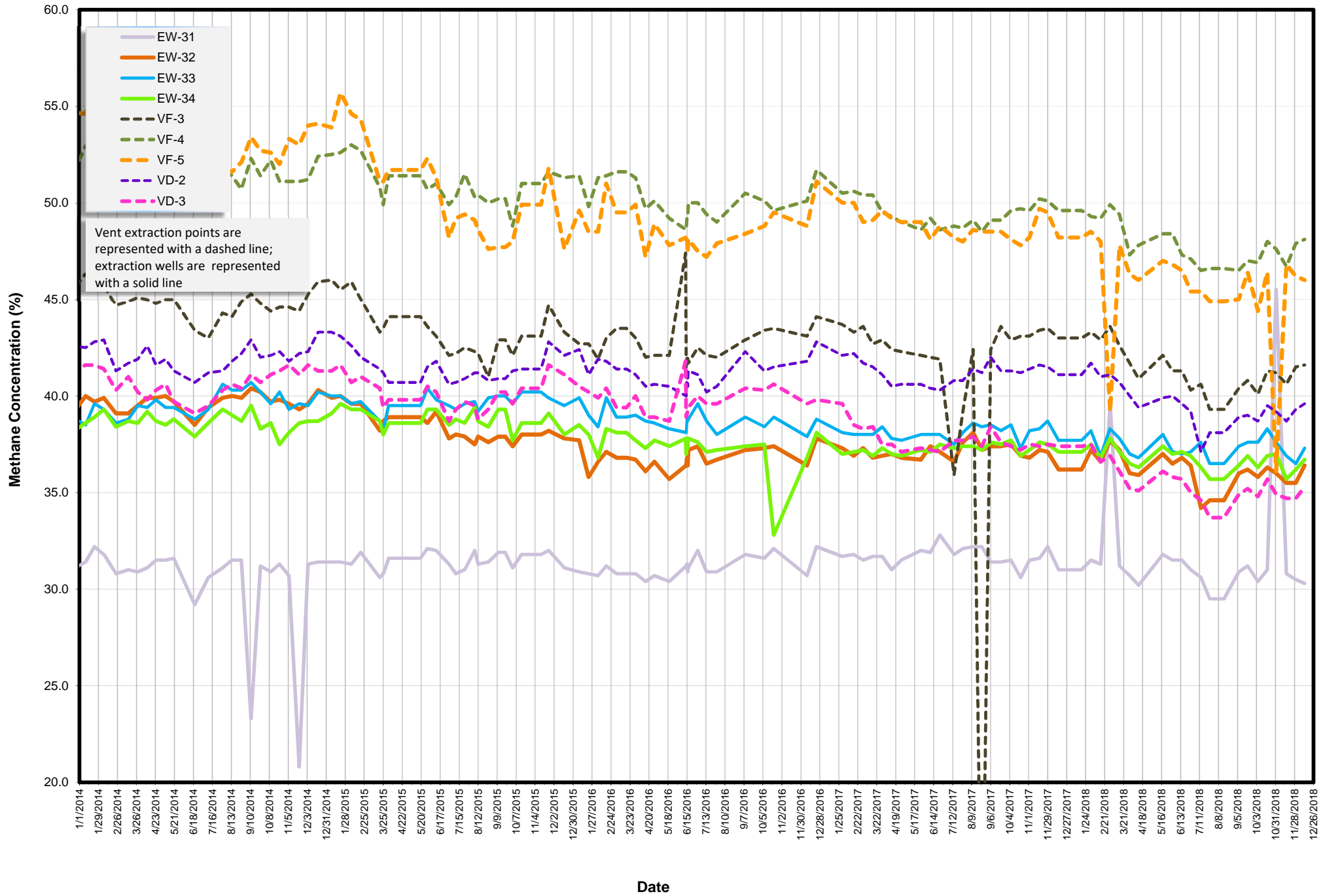


\* Trend line generated from all data 1/1/14 to present

# Methane Concentration Time Series Plot

## OU2 Landfill Individual Extraction Sources

### 1/1/2014 to present



Methane Concentration Time Series Plot  
OU2 Landfill Extraction Legs  
1/1/2014 to present

