

BCT Meeting, June 19, 2019



OU2 Landfills and OU2 Groundwater Monitoring and Treatment System annual reports will be combined starting 3Q 2019 (Oct 1 – Sep 30).

- May 2019 Key Events for OU2 Landfills**
- TTU Source Test
  - Annual VOC Compliance Probe Sampling
  - Quarterly Probe Methane monitoring
- June 2019 Key Events for OU2 Landfills**
- TTU Maintenance/Repair
  - TTU Operations
  - Landfill Mowing

**Thermal Treatment Unit  
Operation Summary  
2006 - 2019**

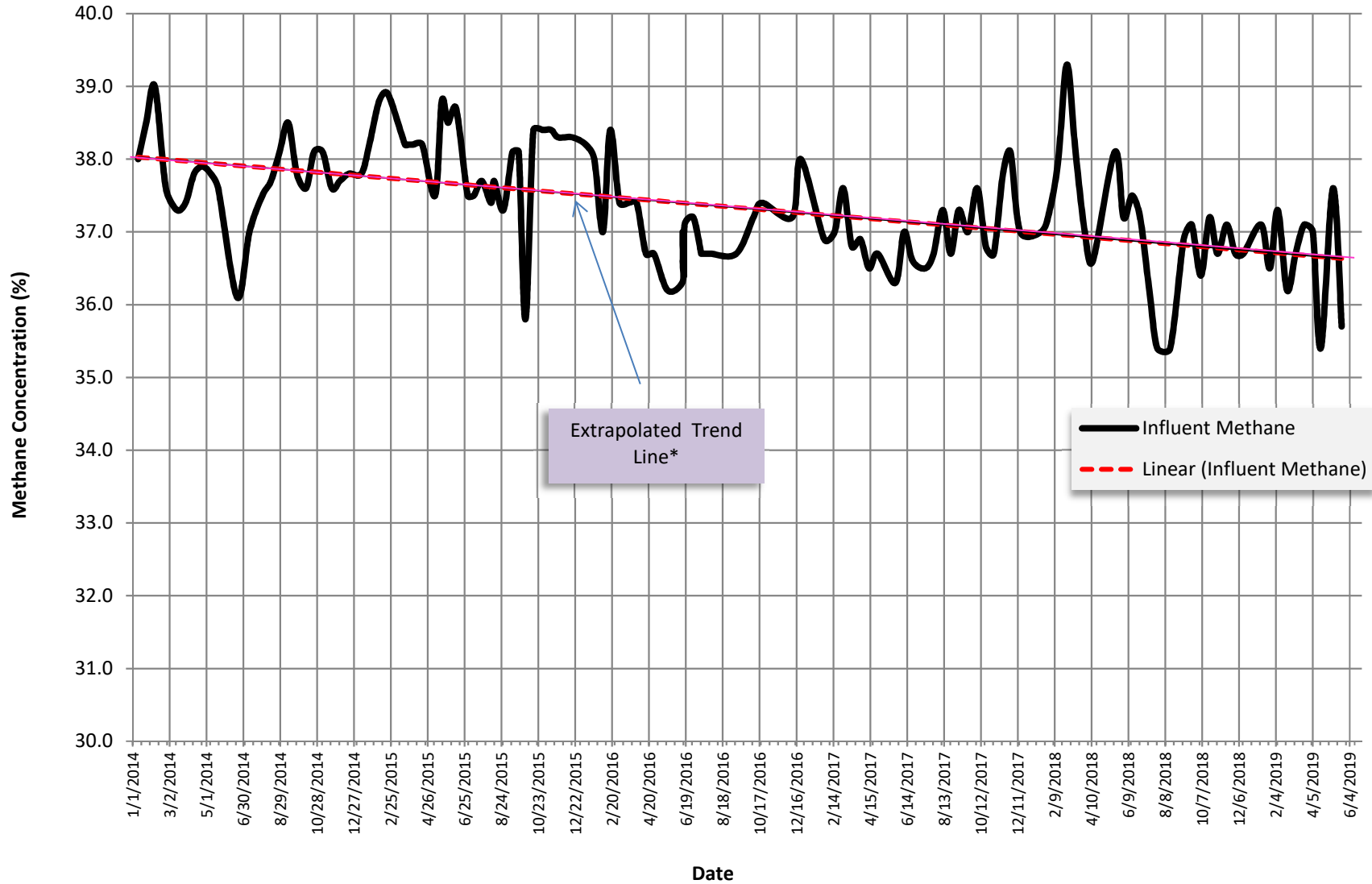
<b>TREATMENT SYSTEM OPERATION SUMMARY</b>	
<b>Treatment System Start Date:</b>	<b>6/4/2001</b>
<b>TTU Start Date:</b>	<b>4/4/2006</b>
<b>Last Reading Date/Time:</b>	<b>5/22/2019 14:24</b>
<b>Historical through 2018 (TTU only):</b>	
Total TTU Hours:	<b>111,672</b>
Total TTU Hours Operated:	<b>33,771</b>
% TTU Operation:	<b>30.2%</b>
Total Pounds of Methane Removed:	<b>3,509,729</b>
<b>Current Year 2019:</b>	
Total Hours:	<b>3,720</b>
Total Hours Operated:	<b>697</b>
% TTU Operation:	<b>19%</b>
Total Pounds of Methane Removed:	<b>60,283</b>
<b>Cumulative (since TTU startup in 2006):</b>	
% TTU Operation:	<b>29.9%</b>
Total Pounds of Methane Removed:	<b>3,570,012</b>

Year	Operating Hours	Change from Previous Year	Methane			OU2 Groundwater COCs	
			Pounds Removed	Change from Previous Year	Pounds/week	Pounds Removed	Change from Previous Year
2007	4,035		532,130		10,205	6.2	
2008	2,838	-30%	288,458	-46%	5,532	3.1	-51%
2009	4,493	58%	448,154	55%	8,595	3.4	11%
2010	2,421	-46%	212,681	-53%	4,079	1.4	-60%
2011	2,543	5%	228,082	7%	4,374	1.4	0%
2012	2,509	-1%	229,397	1%	4,399	1.2	-13%
2013	2,116	-16%	187,779	-18%	3,601	1.1	-8%
2014	1,961	-7%	174,427	-7%	3,345	1.0	-11%
2015	2,653	35%	237,571	36%	4,556	1.3	29%
2016	2,039	-23%	178,645	-25%	3,426	0.9	-28%
2017	1,554	-24%	135,711	-24%	2,603	0.6	-33%
2018	1,661	-19%	145,174	-19%	2,784	0.6	-9%
2019	697		60,283		2,705		

**Thermal Treatment Unit  
Operation Summary  
2006 - 2019**

<b>EXTRACTION SYSTEM (2019)</b>						
<b>Location</b>	<b>Last Instantaneous Methane Reading (%)</b>	<b>Last Instantaneous Flow Rate Reading (scfm)</b>	<b>Current Methane Removal Rate (lbs/day)</b>	<b>2019 % Operation</b>	<b>2019 Methane Removed (Lbs)</b>	<b>% Contribution of Each Extraction Source</b>
<b>Area E</b>						
EP-36	35.8	25.0	527.9	19%	50311.2	21%
<b>Area F</b>						
EW-31	30.3	1.0	17.9	19%	4318.0	2%
EW-32	36.2	22.0	469.7	19%	45,349	19%
EW-33	36.9	15.0	326.5	19%	34,608	14%
EW-34	36.4	28.0	601.2	19%	63,231	26%
VF-3	40.0	6.0	141.6	19%	15401.1	6%
VF-4	46.9	5.0	138.3	19%	13903.6	6%
VF-5	46.0	1.0	27.1	19%	7765.4	3%
<b>Area D</b>						
VD-2	36.9	1.0	21.8	19%	4707.1	2%
VD-3	33.9	1.0	20.0	19%	4577.5	2%
<b>MIXED</b>						
MIXED	35.7	96.0	2021.5	19%	205457.3	100%

Methane Concentration Time Series Plot  
OU2 Landfill Extraction Sources  
01/01/2014 to present

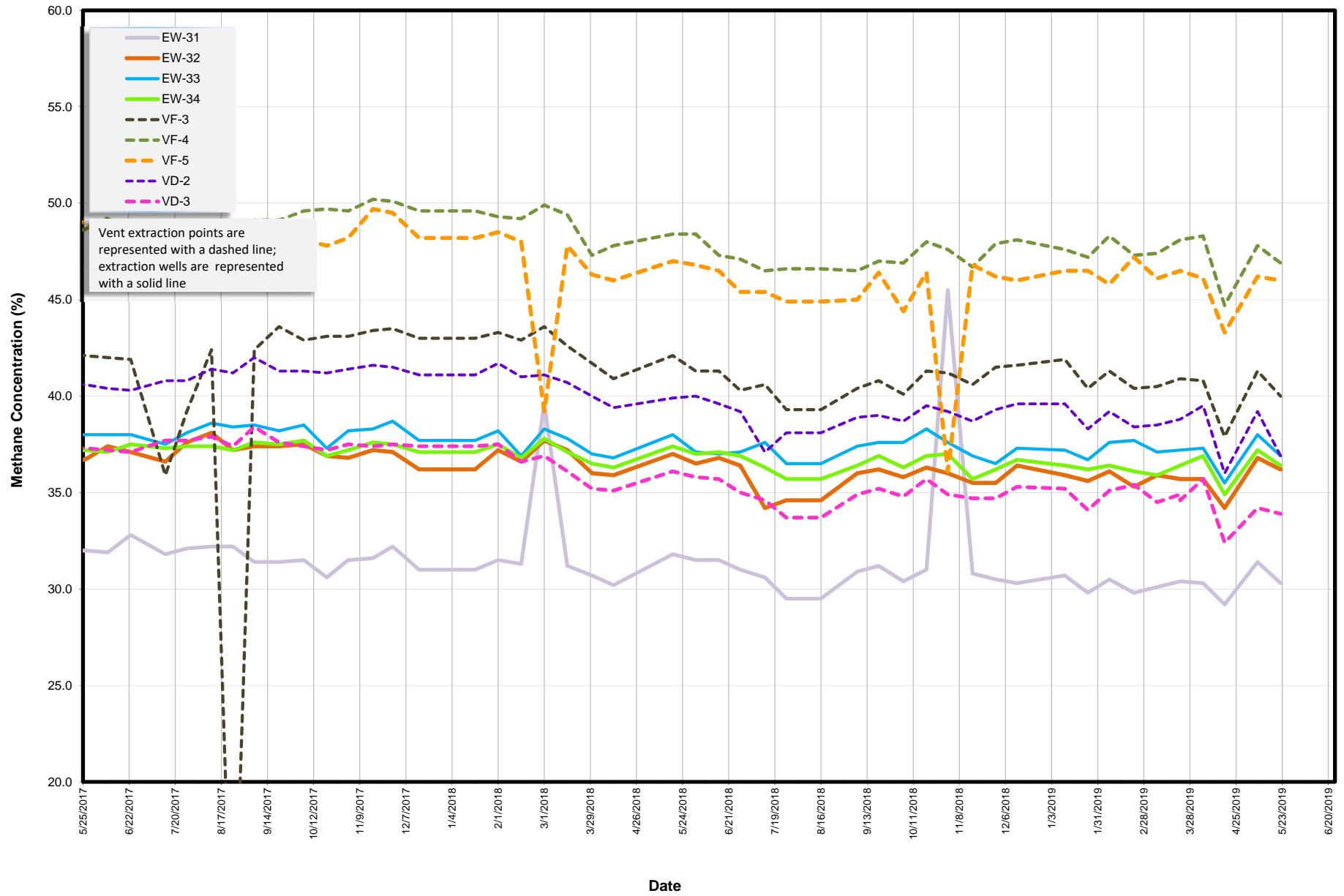


\* Trend line generated from all data 1/1/14 to present

# Methane Concentration vs. Time

## OU2 Landfill Extraction Sources

### 1/1/2011 to present



# Methane Concentration vs. Time

## OU2 Landfill Extraction Sources

### 1/1/2011 to present

