

HTW BCT Meeting, January 27, 2021

Table 1: Dec 2020 – Sites 2/12 GWTP and SVTU Statistics

Monthly Statistics	Volume Treated	Average Flow	Percent of Time Online	COC Mass Removed (pounds)
Dec 2020 GWTP	6,071,040 gal	136 gpm	100	0.25
Total since April 1999	2.188 billion gal			493
Dec 2020 SVTU	0 scf	0 scfm	0	0.0
Total since September 2015	1.374 billion scf			9.9

Table 2: Dec 2020-Jan 2021 – Sites 2/12 Treated Water Analytical Results at TS-212-INJ

COC	Discharge Limit (µg/L) ²	Sample Date / Analytical Results
		01/04/2021
1,1-Dichloroethene (1,1-DCE)	6.0	ND (0.25)
1,2-Dichloroethane (1,2-DCA)	0.50	ND (0.25)
1,3-dichloropropene (1,3-DCP) ¹	0.50	ND (0.25)
Chloroform	2.0	0.15 J
cis-1,2-dichloroethene (cis-1,2-DCE)	6.0	0.54
Tetrachloroethene (PCE)	5.0	2.0
Trichloroethene (TCE)	5.0	1.6
Vinyl Chloride (VC)	0.10	ND (0.05)

Notes:

¹ The reported value is the sum of both cis- and trans-isomers.

² Discharge limits are the ACLs for injection over the plume.

J: Estimated results below the limit of quantitation (LOQ).

ND: The analyte was not detected at or above the limit of detection (LOD).

gpm: gallon(s) per minute

gal: gallon(s)

COC: chemical of concern

NS: Not sampled

scf: standard cubic foot or feet

scfm: standard cubic feet per minute

µg/L: micrograms per liter

Results in gray are ND

*Preliminary data

December 2020 Key Events

- Dec 7-11: Fourth Quarter 2020 Groundwater Monitoring event. Used backup laboratory due to COVID-19 outbreak at primary laboratory.
- Dec 17: optimization meeting.
- Dec 21: Replaced microwave radio with virtual private network (VPN) system at Sites 2/12 GWTP.
- Dec 21: sampled one monitoring well where PDB had not been placed.

January 2021 Key Events

- None.

February 2021 Key Events

- Feb 16-19: First Quarter 2021 Soil Gas Monitoring event.
- Redevelop EW-12-08-180U and install upsized pump.

March 2021 Key Events

- March 1-5: First Quarter 2021 Groundwater Monitoring event.

Future Key Events

- Shea Homes proposal to decommission EW-12-04-180U and EW-12-04-180M (no date set).



Table 3. Sites 2/12 Select Groundwater Extraction/Monitoring Well Data

Well Identification ³	Select COC Concentrations (µg/L) ⁴							
	1Q 2020	2Q 2020	3Q 2020	4Q 2020*	1Q 2020	2Q 2020	3Q 2020	4Q 2020*
	TCE				PCE			
ACL:	5.0				5.0			
EW-12-03-180M	2.1	0.62	2.4	2.3	ND (0.25)	ND (0.25)	0.18 J	0.16 J
EW-12-05-180M	0.60	2.1	1.9	2.4	0.68	0.95	0.65	0.79
EW-12-07-180M	0.78	0.63	0.54	0.59	0.24 J	0.19 J	0.12 J	0.14 J
EW-12-08-180U	0.31 J	0.35 J	0.36 J	0.16 J	8.4	13.1	11.6	6.1
MW-12-09R-180	2.3	1.4	1.2	1.6	0.34 J	0.30 J	0.21 J	0.26 J
MW-12-14-180M	1.6	1.9	2.1	1.2	0.31 J	0.43 J	0.36 J	0.32 J
MW-12-16-180M	1.8	1.8	1.7	2.0	ND (0.25)	ND (0.25)	ND (0.25)	0.089 J
MW-12-20-180U	ND (0.25)	ND (0.25)	ND (0.25)	ND (0.066)	0.94	2.0	3.1	0.87
MW-12-21-180U	ND (0.25)	ND (0.25)	ND (0.25)	ND (0.066)	0.35 J	0.23 J	0.41 J	0.38 J
MW-12-24-180U	ND (0.25)	ND (0.25)	ND (0.25)	ND (0.066)	0.60	0.94	0.33 J	0.36 J
MW-12-28-180U	ND (0.25)	ND (0.25)	ND (0.25)	ND (0.066)	0.52	0.42 J	0.39 J	0.36 J
MW-12-32-180U	0.84	0.57	0.64	0.70	0.71	0.48 J	0.64	0.73

Notes:

¹ The reported value is the sum of both cis- and trans-isomers.

² Discharge limits are the ACLs for injection over the plume.

³ Extraction wells not listed have met the QAPP decision rules to no longer operate.

⁴ Concentration in **bold** and shaded exceeds the Aquifer Cleanup Level (ACL). Concentrations in gray text are ND.

J: Estimated results below the limit of quantitation (LOQ)

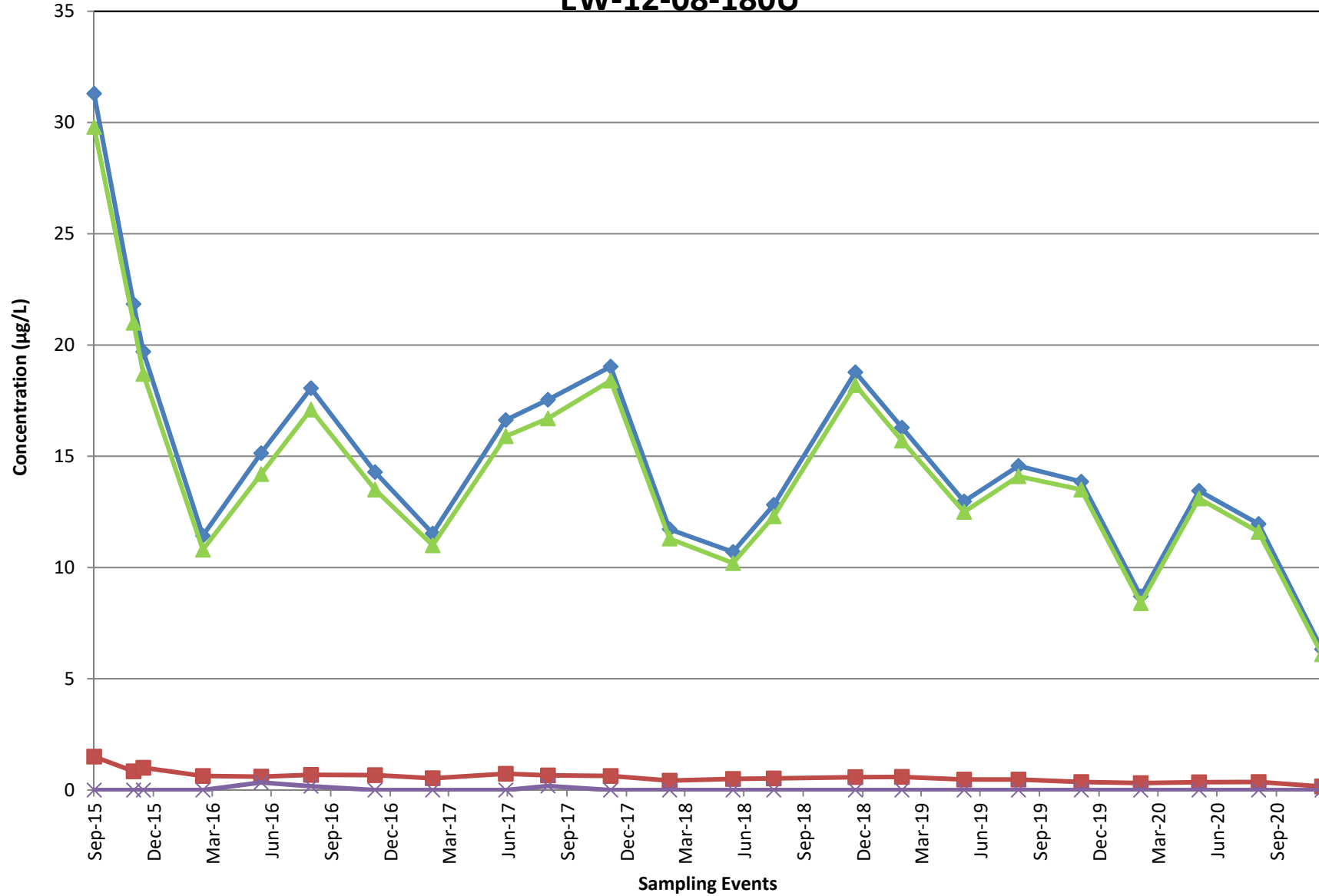
ND: The analyte was not detected at or above the limit of detection (LOD)

COC: chemical of concern

µg/L: micrograms per liter

* Preliminary data

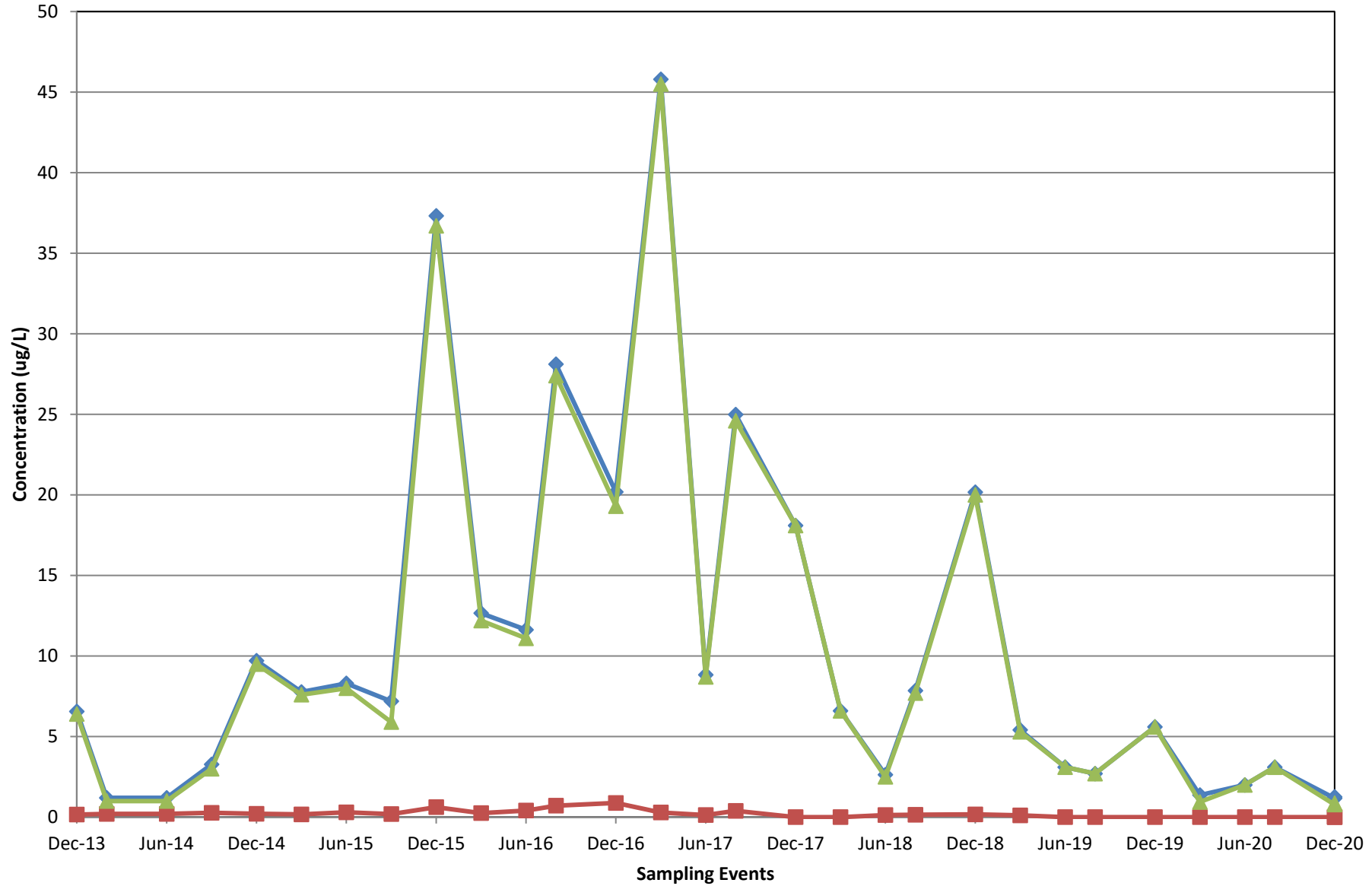
EW-12-08-180U



◆ Total COCs ■ TCE ▲ PCE × cis-1,2-DCE



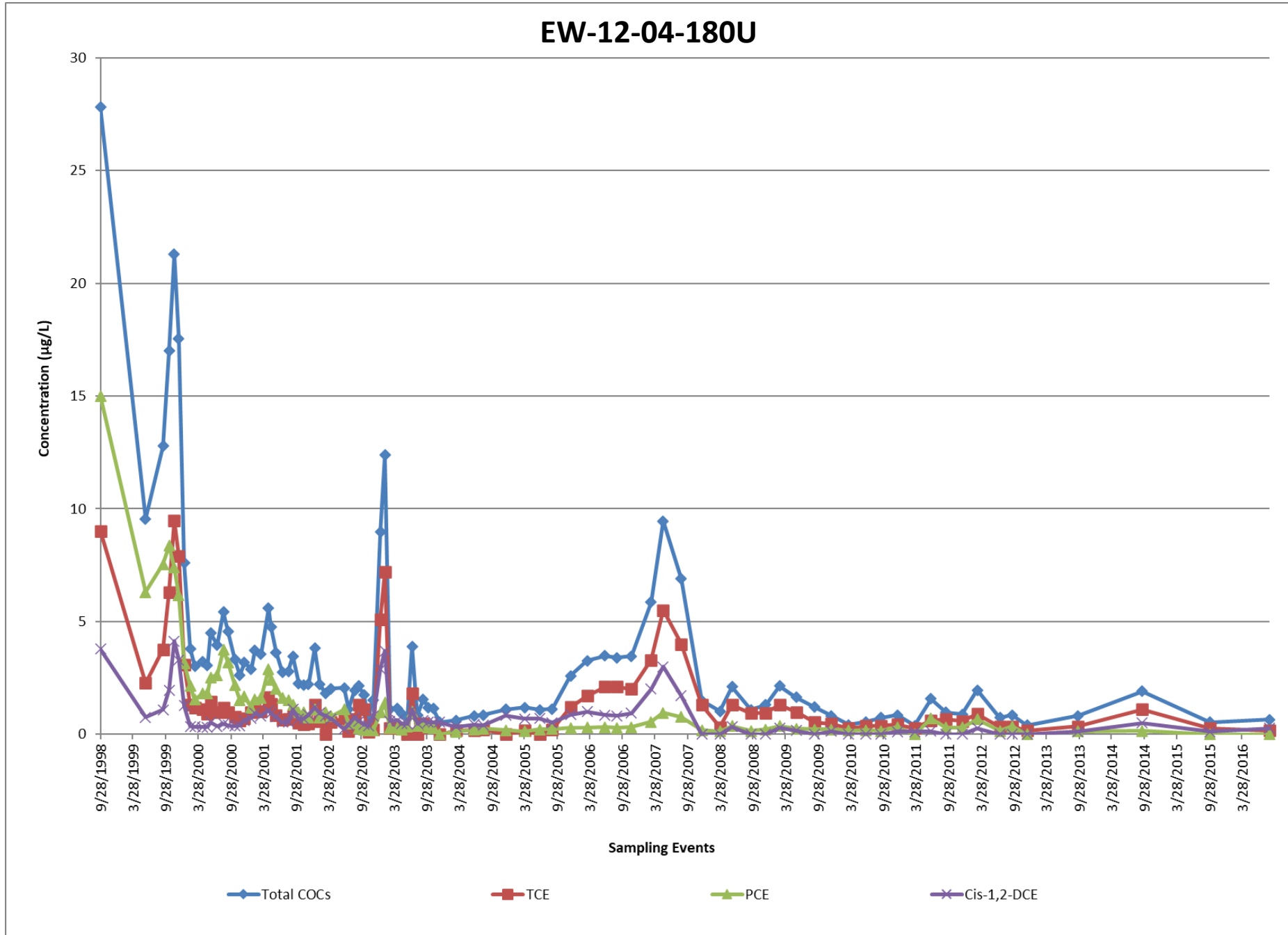
MW-12-20-180U

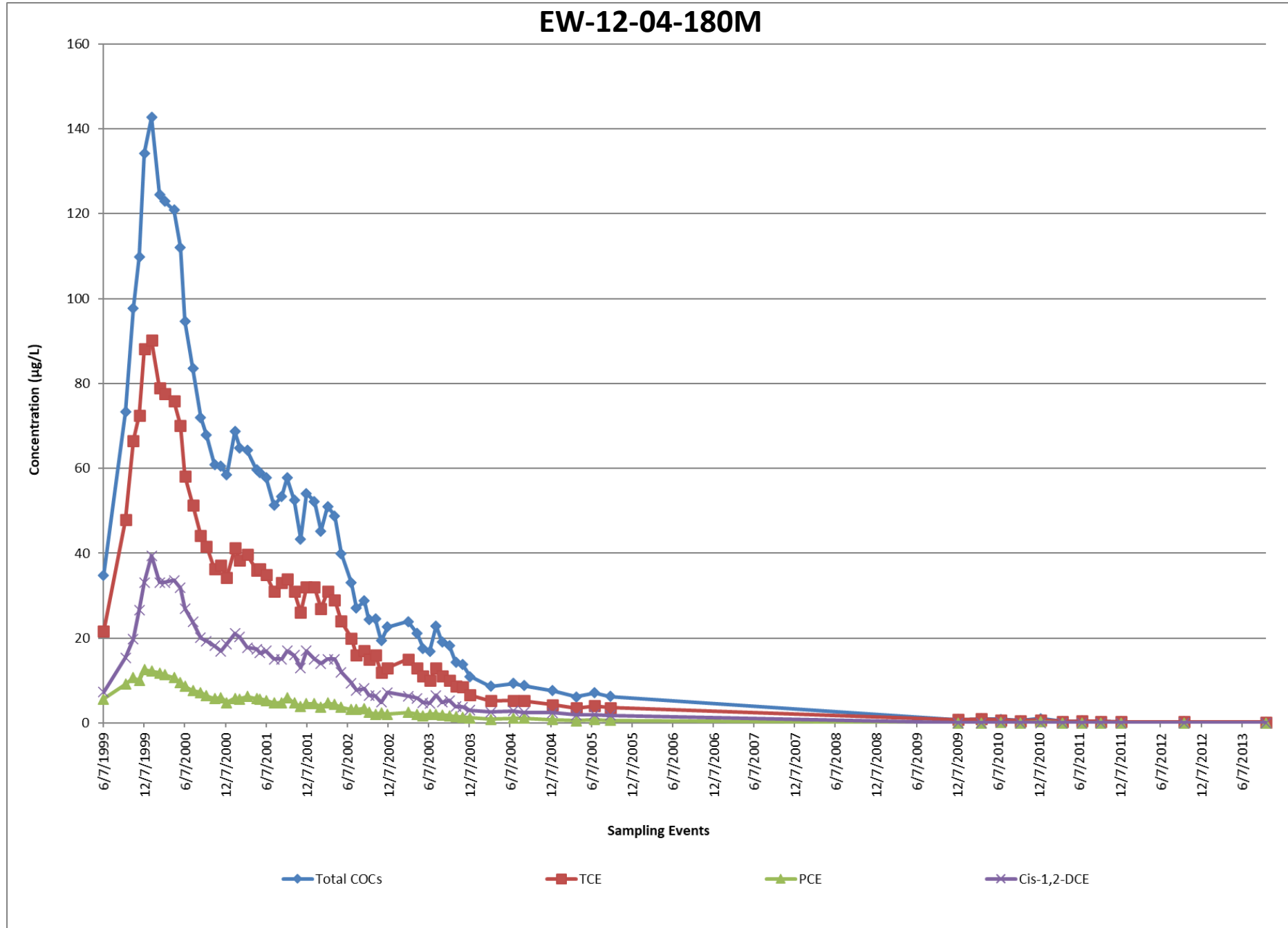


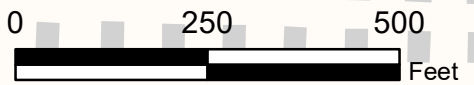
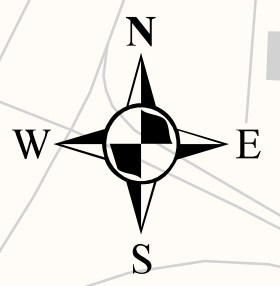
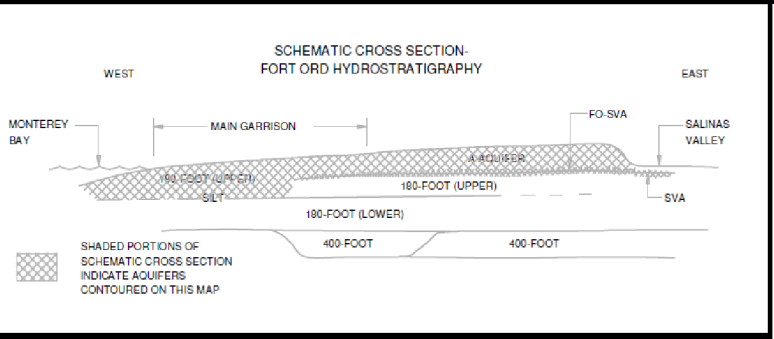
◆ Total COCs

■ TCE

▲ PCE







EXPLANATION

- Monitoring Well Not Sampled
- Monitoring Well with No PCE Detection
- Monitoring Well with PCE Less than ACL
- Extraction Well Not Sampled
- Extraction Well with PCE Less than ACL
- Extraction Well with PCE Detection Above or Equal to ACL

- EW-12-08-180U**
PCE: 13.1
Well ID - Bold when ACL Exceeded
TCE and/or PCE concentration (µg/L)
with validation/lab qualifier.
- Chemical of Concern (COC) Aquifer Cleanup Level (ACL)
Exceedance Contour in µg/L.
- 5** — Tetrachloroethene (PCE)
- General Groundwater Flow Direction
- Roads
- Approximate location of the Upper 180-Foot Aquifer Groundwater Divide
- Facilities

- NOTES:**
- (1) Samples were collected between August 31, 2020 and September 4, 2020.
 - (2) Contour is based on one interpretation of the data that was available at the time this report was prepared; other interpretations may be possible.
 - (3) Contours based on highest value obtained from multiple bags where applicable.
 - (4) Other COC ACL Exceedances detected beyond the extent of the PCE Plume are illustrated when present.

GROUNDWATER PCE CONCENTRATIONS
UPPER 180-FOOT AQUIFER WEST OF THE SVA
SITES 2 AND 12
Third Quarter 2020
Groundwater and Soil Gas Monitoring and Treatment
System Report, Former Fort Ord, California

