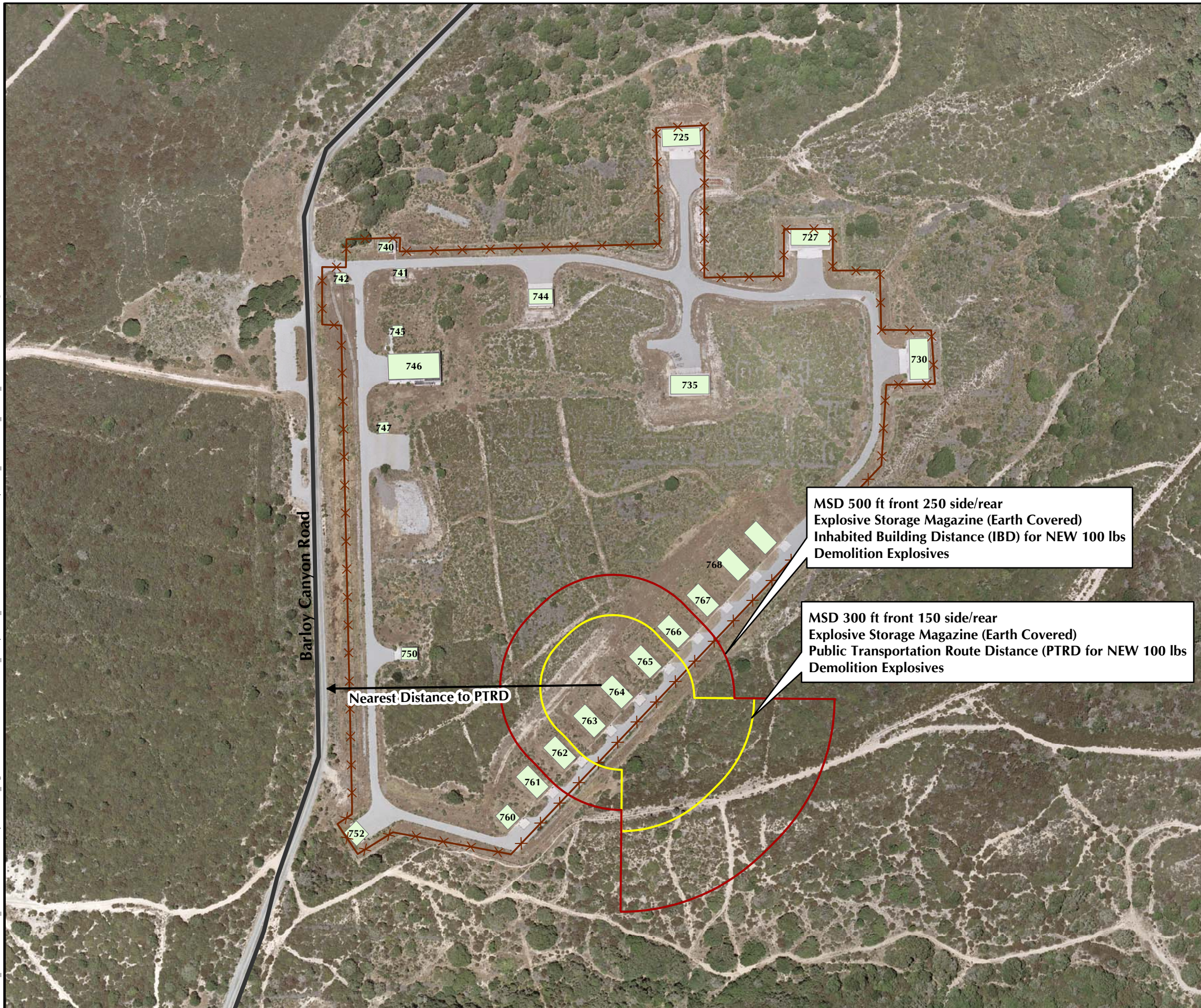
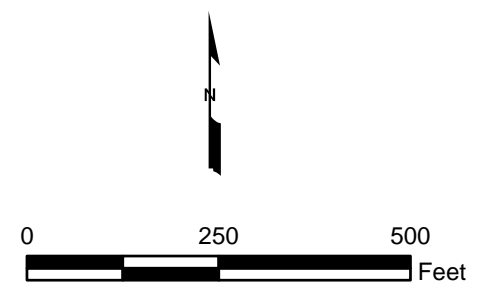


K:\001_EMAV03609595_FORD\GIS\Projects\ESRA_Figures\Week062907\EastGarrison_SafetyBuffer_Bunkers\SSWP_Addendum\SafetyBuffer_EastGarrison_Bld764_SSWP.mxd - 1/15/2008 @ 4:10:10 PM



Legend

- Building
- Major Road
- Fencing
- Public Traffic Route
- Inhabited Buildings



LFR
WESTON SOLUTIONS
 Westcliffe
 Engineers, Inc.

**Explosive Storage Location
 (Building 764)
 Minimum Separation Distances**
 FORA ESCA RP
 Monterey County, California