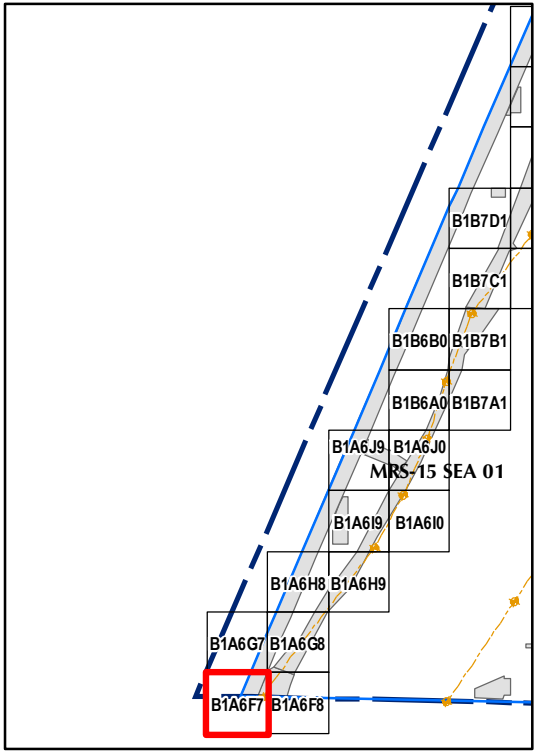


Legend

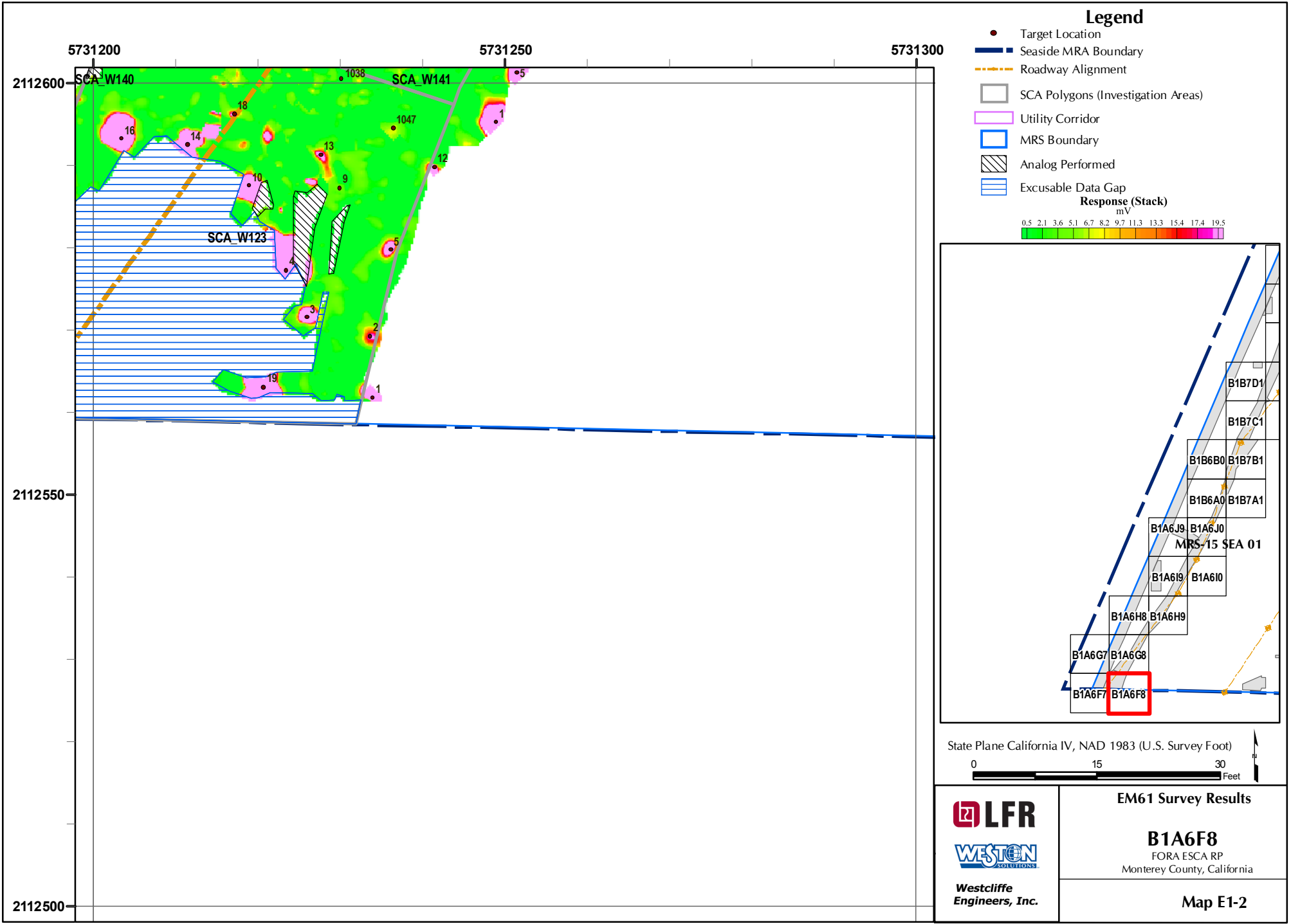
- Target Location
 - Seaside MRA Boundary
 - - - Roadway Alignment
 - SCA Polygons (Investigation Areas)
 - Utility Corridor
 - MRS Boundary
 - ▨ Analog Performed
 - ▨ Excusable Data Gap
- Response (Stack)**
mV
- 0.5 2.1 3.6 5.1 6.7 8.2 9.7 11.3 13.3 15.4 17.4 19.5



State Plane California IV, NAD 1983 (U.S. Survey Foot)

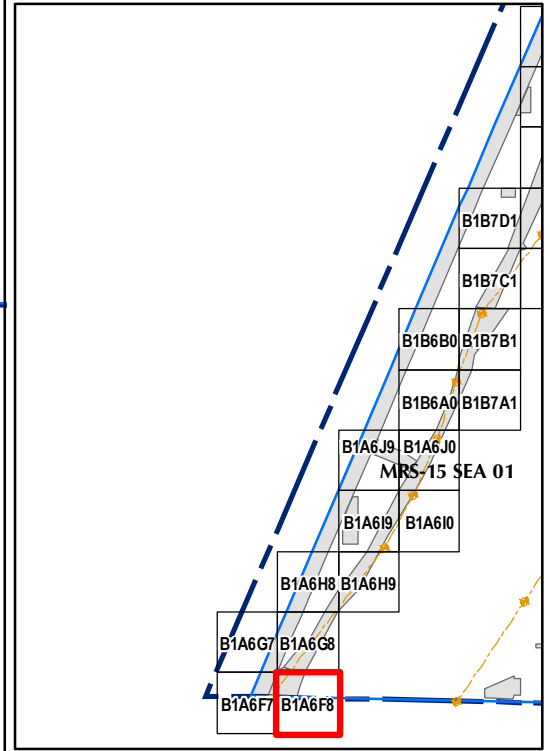
0 15 30 Feet

 Westcliffe Engineers, Inc.	EM61 Survey Results
	B1A6F7 FORA ESCA RP Monterey County, California
Map E-1-1	



Legend

- Target Location
 - ▬ Seaside MRA Boundary
 - - - Roadway Alignment
 - SCA Polygons (Investigation Areas)
 - ▭ Utility Corridor
 - ▭ MRS Boundary
 - ▨ Analog Performed
 - ▭ Excusable Data Gap
- Response (Stack)**
mV
- 0.5 2.1 3.6 5.1 6.7 8.2 9.7 11.3 13.3 15.4 17.4 19.5



State Plane California IV, NAD 1983 (U.S. Survey Foot)

0 15 30 Feet

LFR

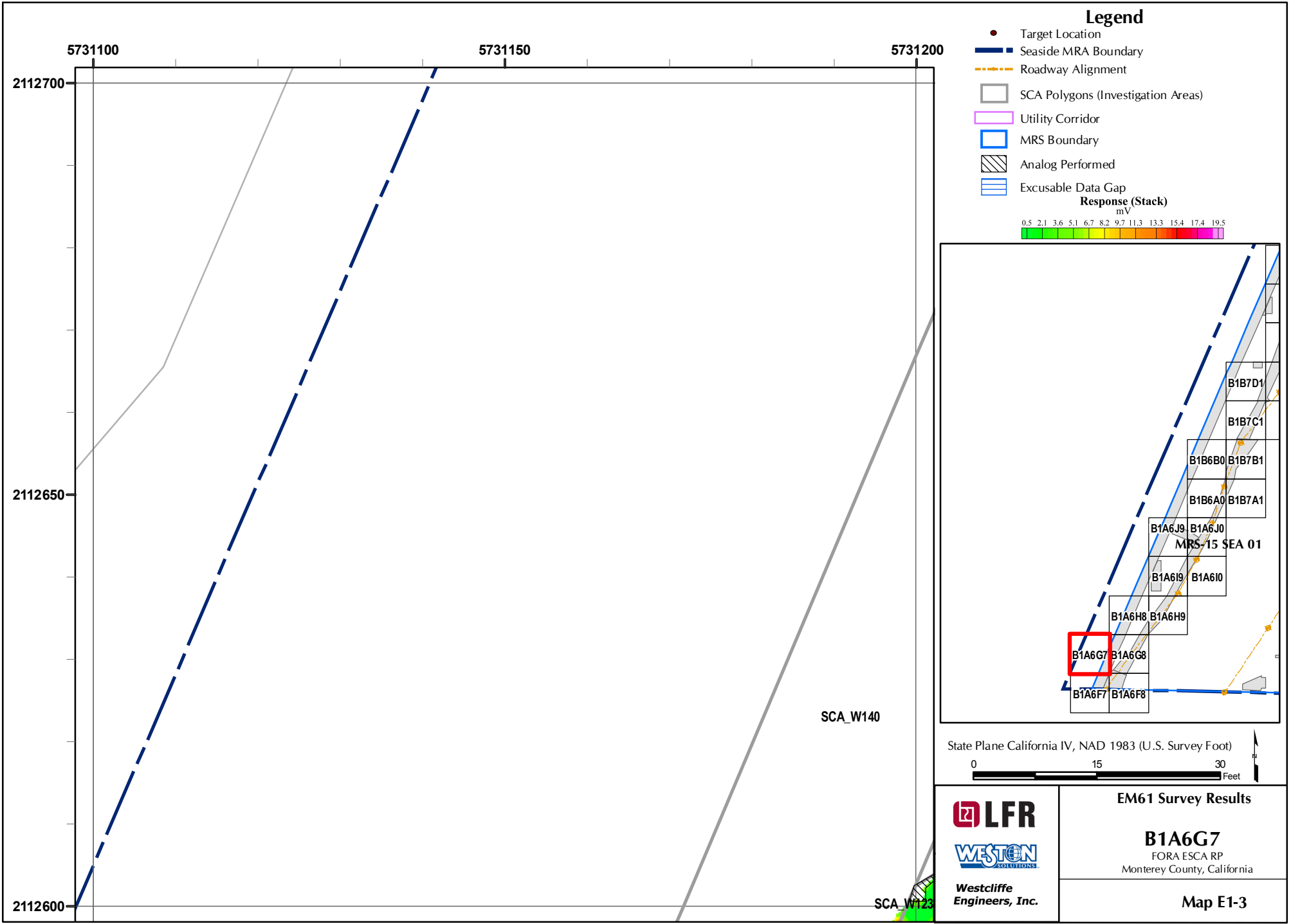
WESTON
SOLUTIONS

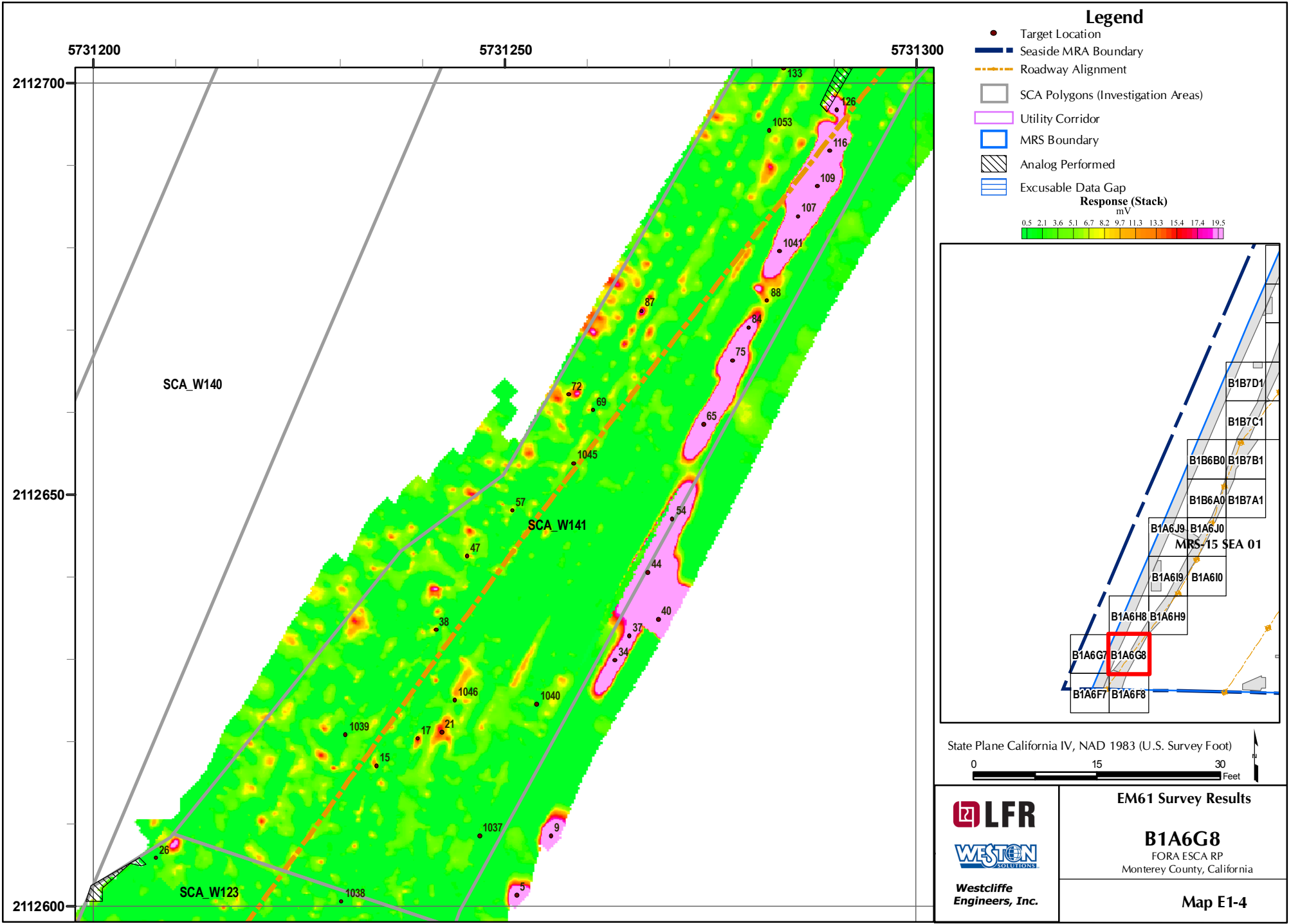
Westcliffe
Engineers, Inc.

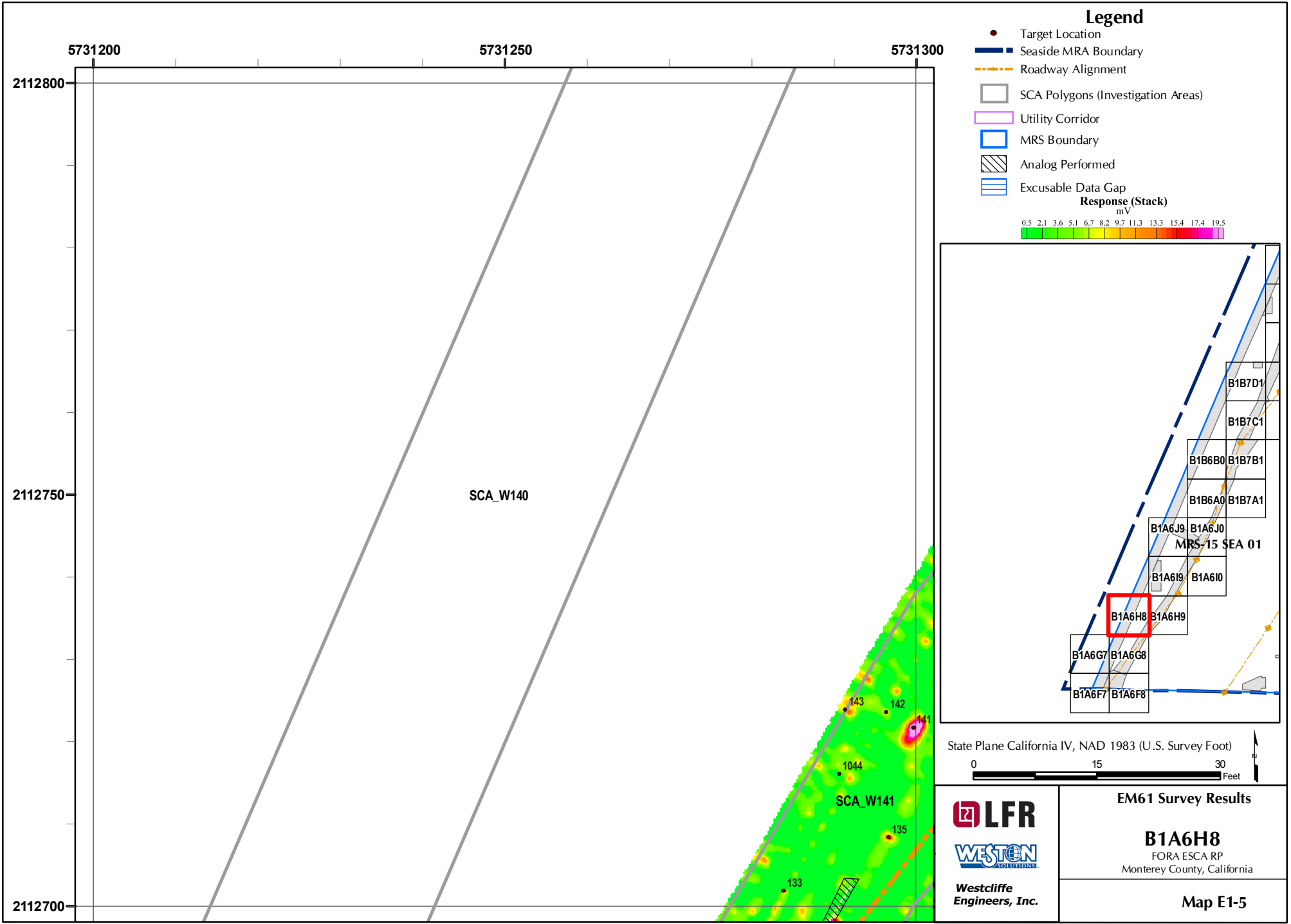
EM61 Survey Results

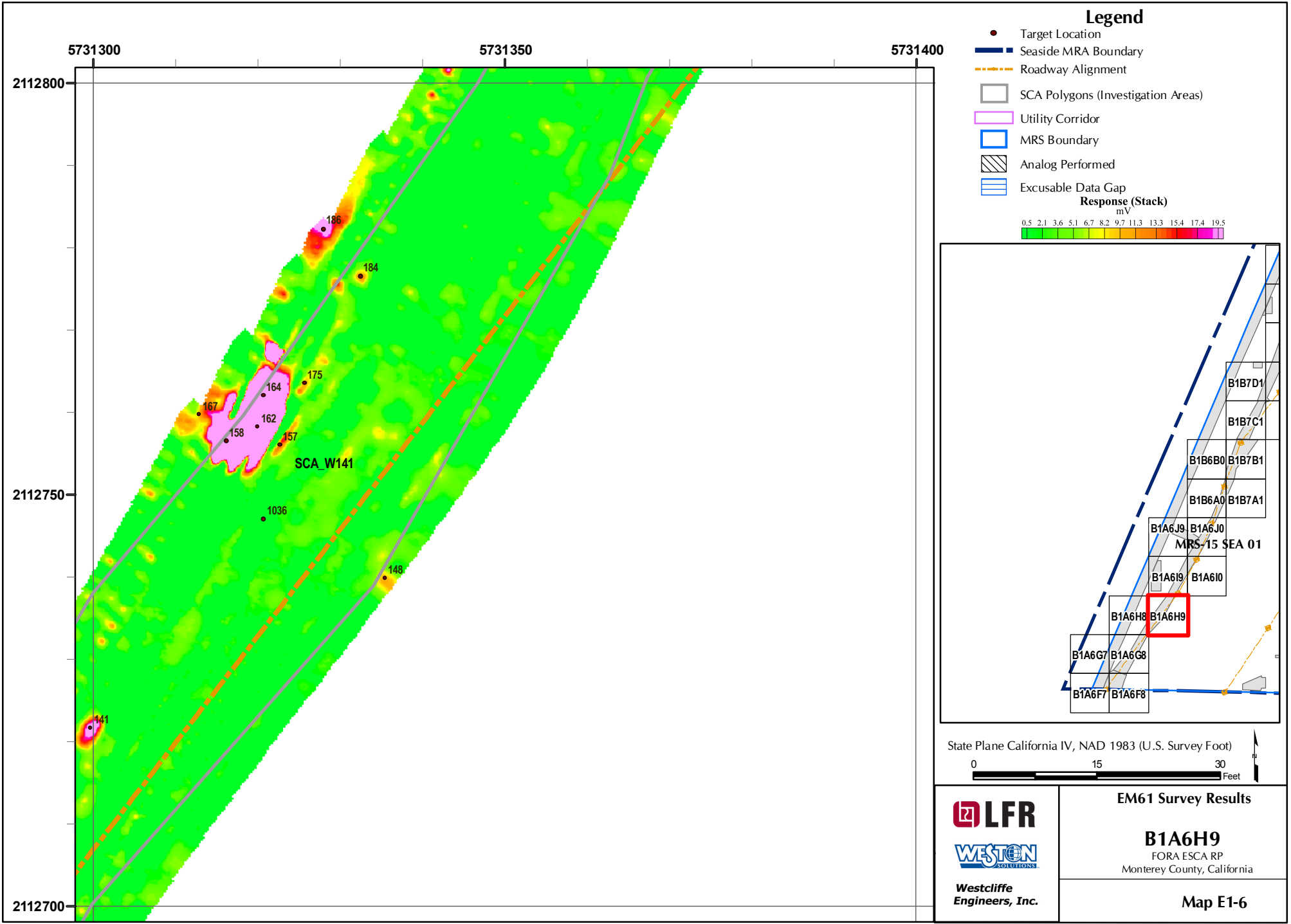
B1A6F8
FORA ESCA RP
Monterey County, California

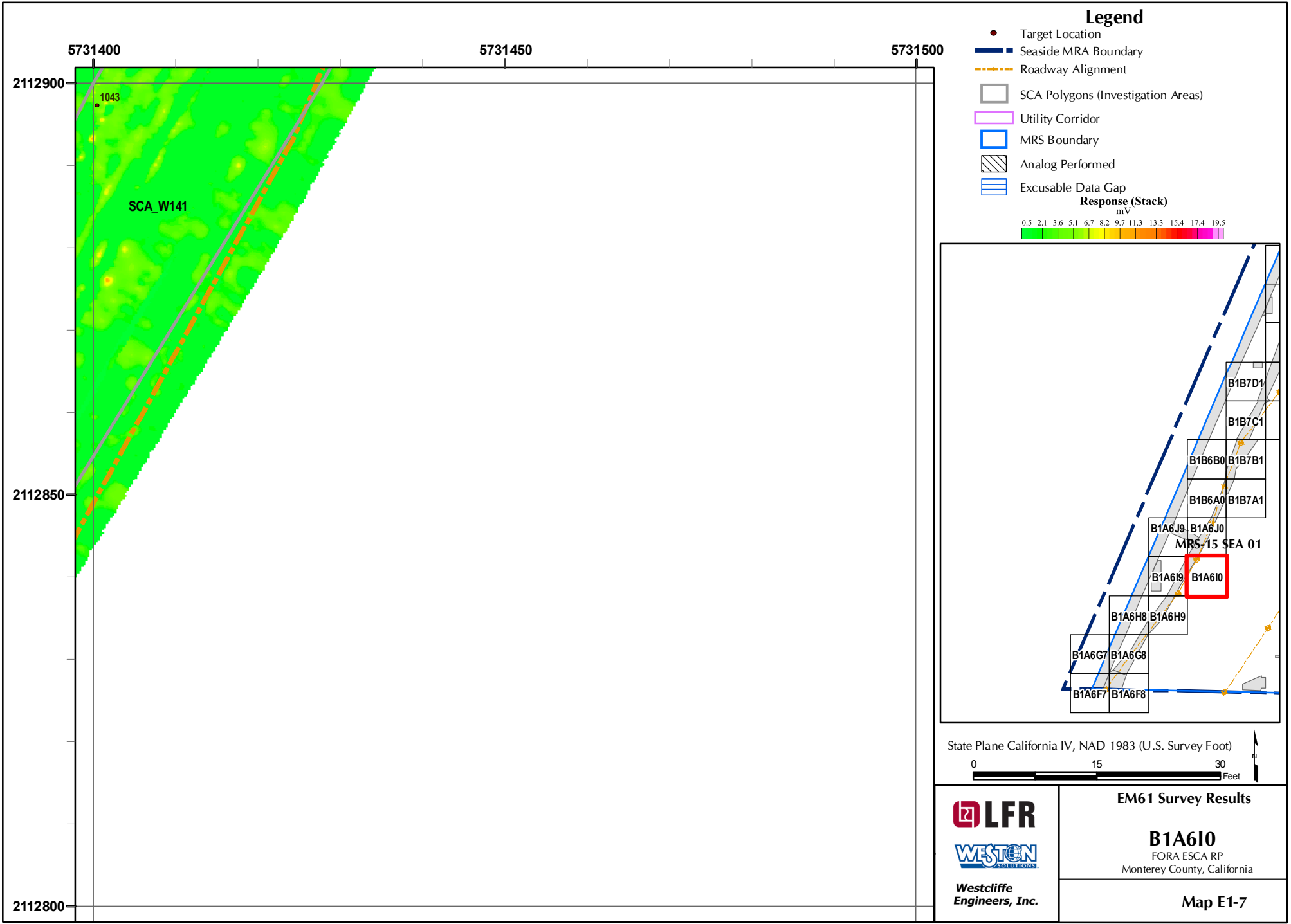
Map E1-2

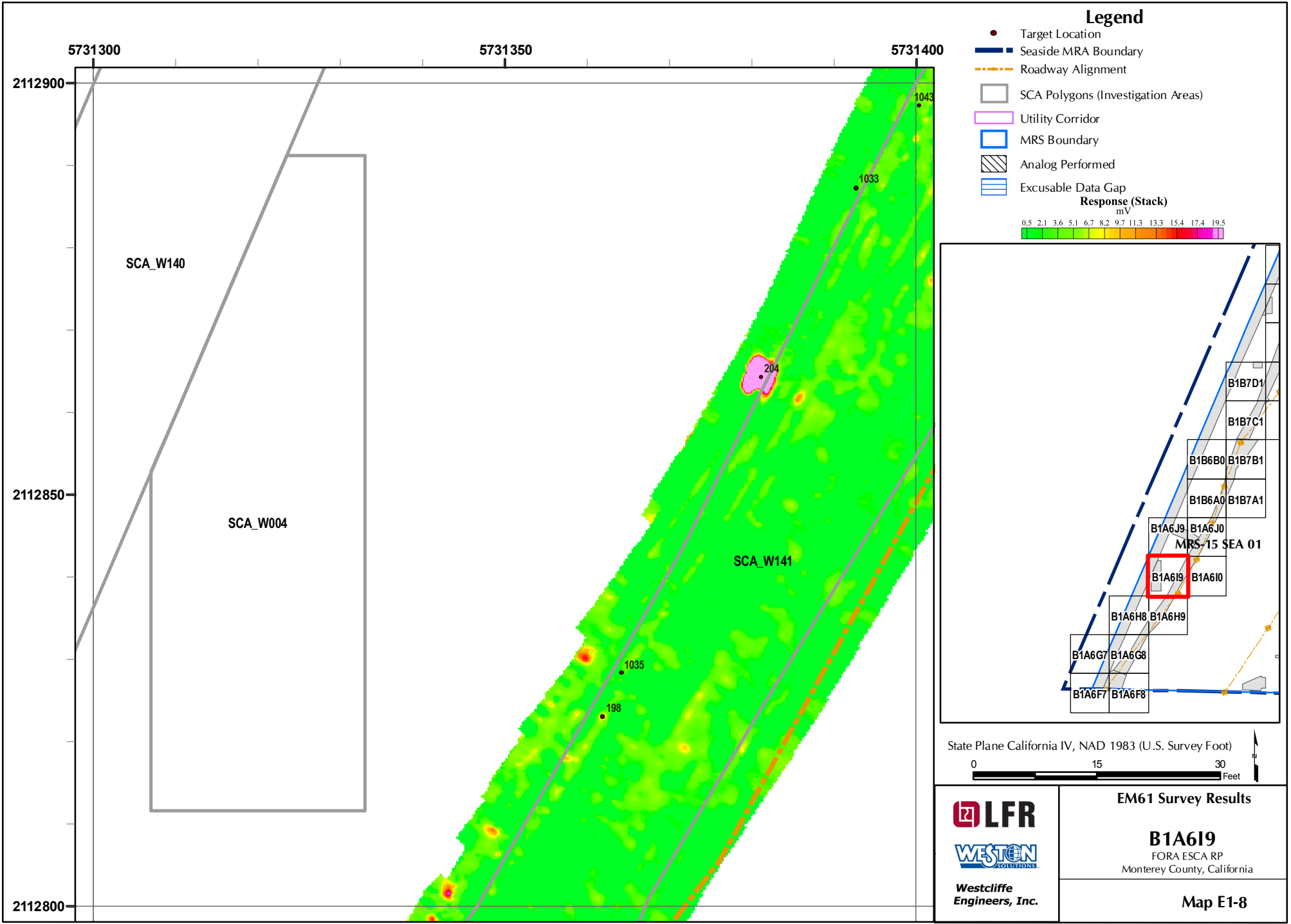






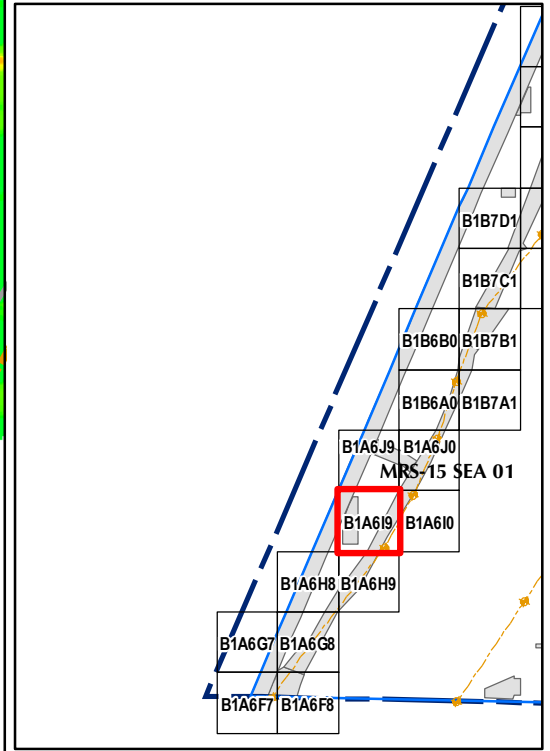






Legend

- Target Location
 - ▬ Seaside MRA Boundary
 - ▬ Roadway Alignment
 - SCA Polygons (Investigation Areas)
 - Utility Corridor
 - MRS Boundary
 - ▨ Analog Performed
 - ▨ Excusable Data Gap
- Response (Stack)**
mV
- 0.5 2.1 3.6 5.1 6.7 8.2 9.7 11.3 13.3 15.4 17.4 19.5



State Plane California IV, NAD 1983 (U.S. Survey Foot)

0 15 30 Feet

LFR

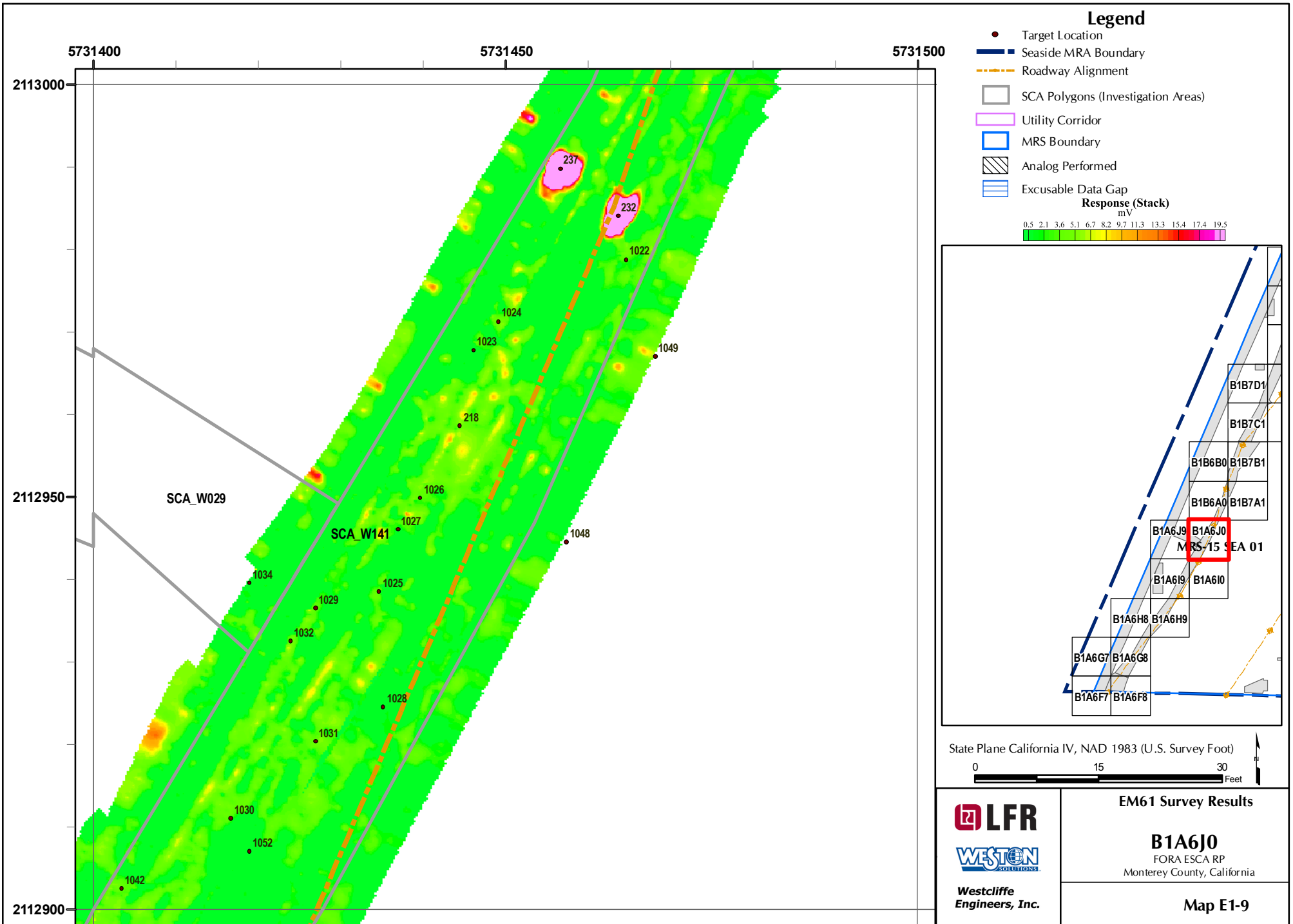
WESTON
SOLUTIONS

Westcliffe
Engineers, Inc.

EM61 Survey Results

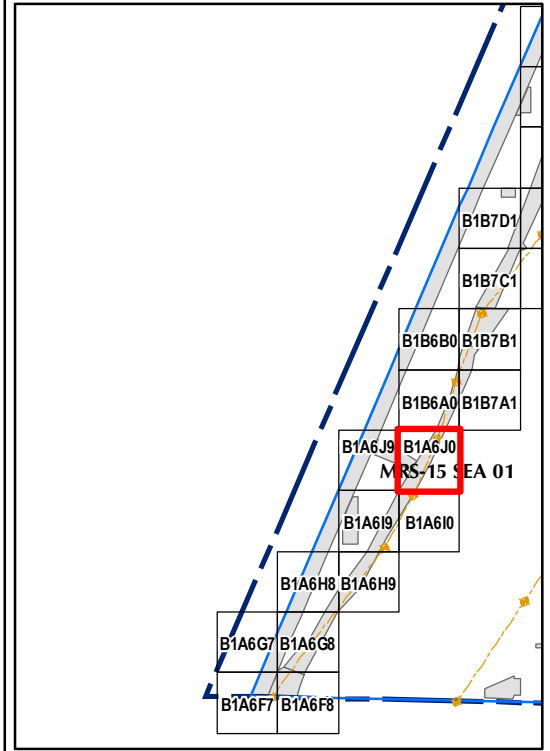
B1A6I9
FORA ESCA RP
Monterey County, California

Map E1-8



Legend

- Target Location
 - ▬ Seaside MRA Boundary
 - - - Roadway Alignment
 - SCA Polygons (Investigation Areas)
 - ▭ Utility Corridor
 - ▭ MRS Boundary
 - ▨ Analog Performed
 - ▭ Excusable Data Gap
- Response (Stack)**
mV
- 0.5 2.1 3.6 5.1 6.7 8.2 9.7 11.3 13.3 15.4 17.4 19.5



State Plane California IV, NAD 1983 (U.S. Survey Foot)

0 15 30 Feet

LFR

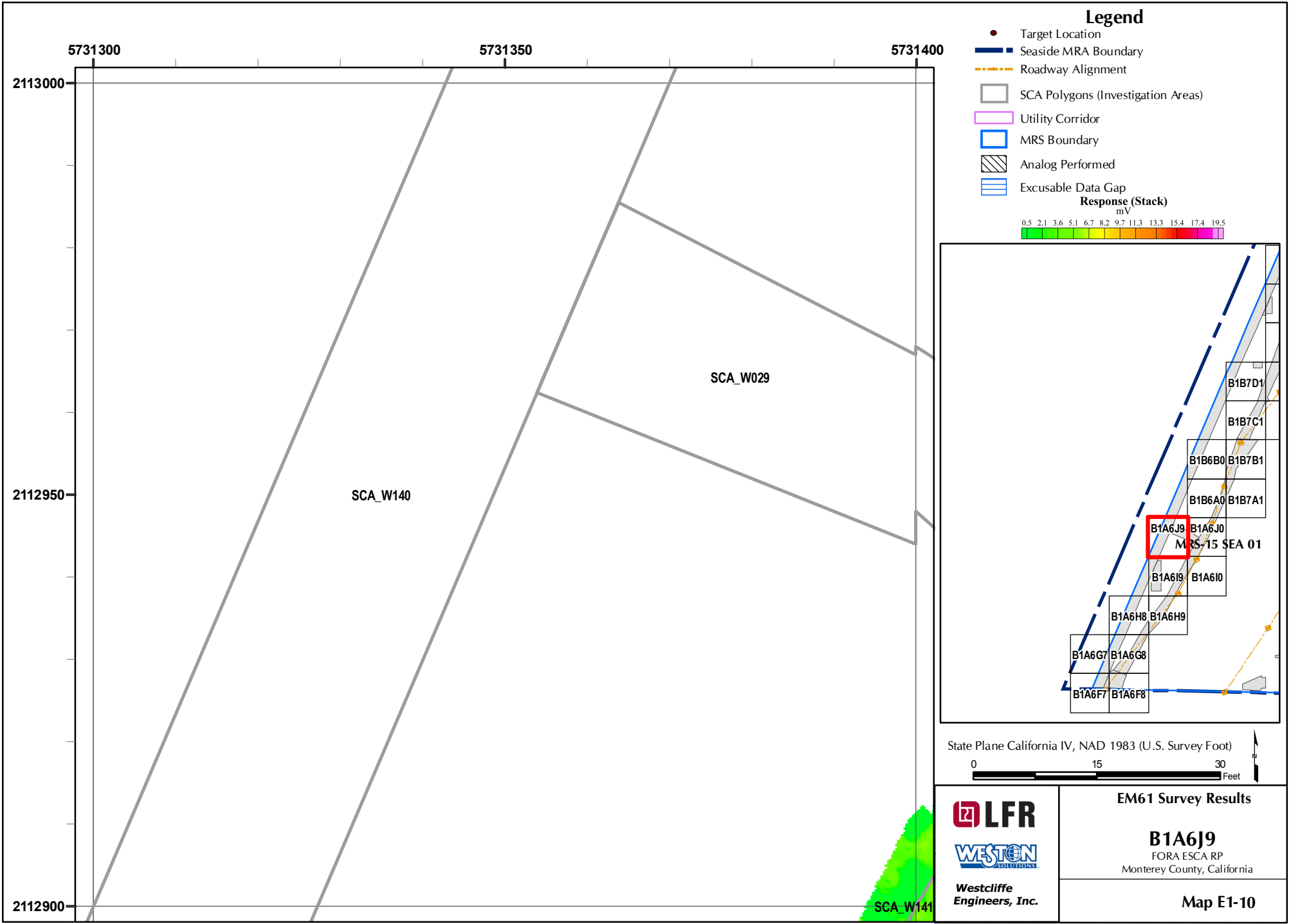
WESTON
SOLUTIONS

Westcliffe
Engineers, Inc.

EM61 Survey Results

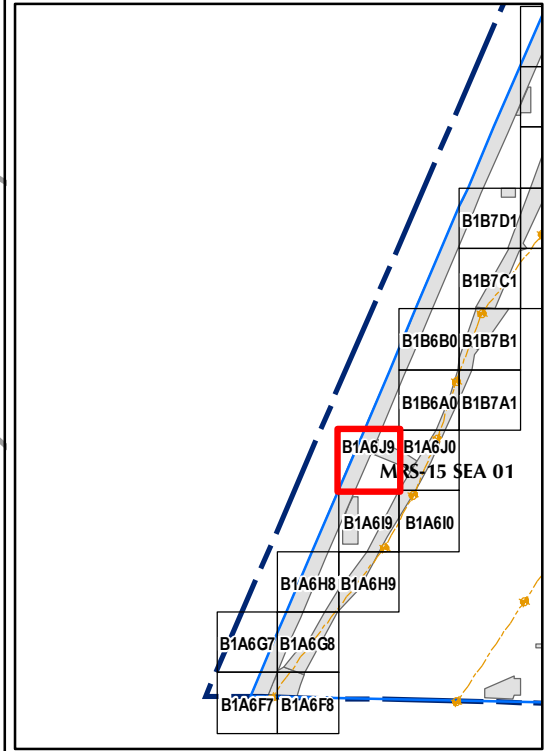
B1A6J0
FORA ESCA RP
Monterey County, California

Map E1-9



Legend

- Target Location
 - ▬ Seaside MRA Boundary
 - - - Roadway Alignment
 - SCA Polygons (Investigation Areas)
 - Utility Corridor
 - MRS Boundary
 - ▨ Analog Performed
 - ▨ Excusable Data Gap
- Response (Stack)**
mV
- 0.5 2.1 3.6 5.1 6.7 8.2 9.7 11.3 13.3 15.4 17.4 19.5



State Plane California IV, NAD 1983 (U.S. Survey Foot)

0 15 30 Feet

LFR

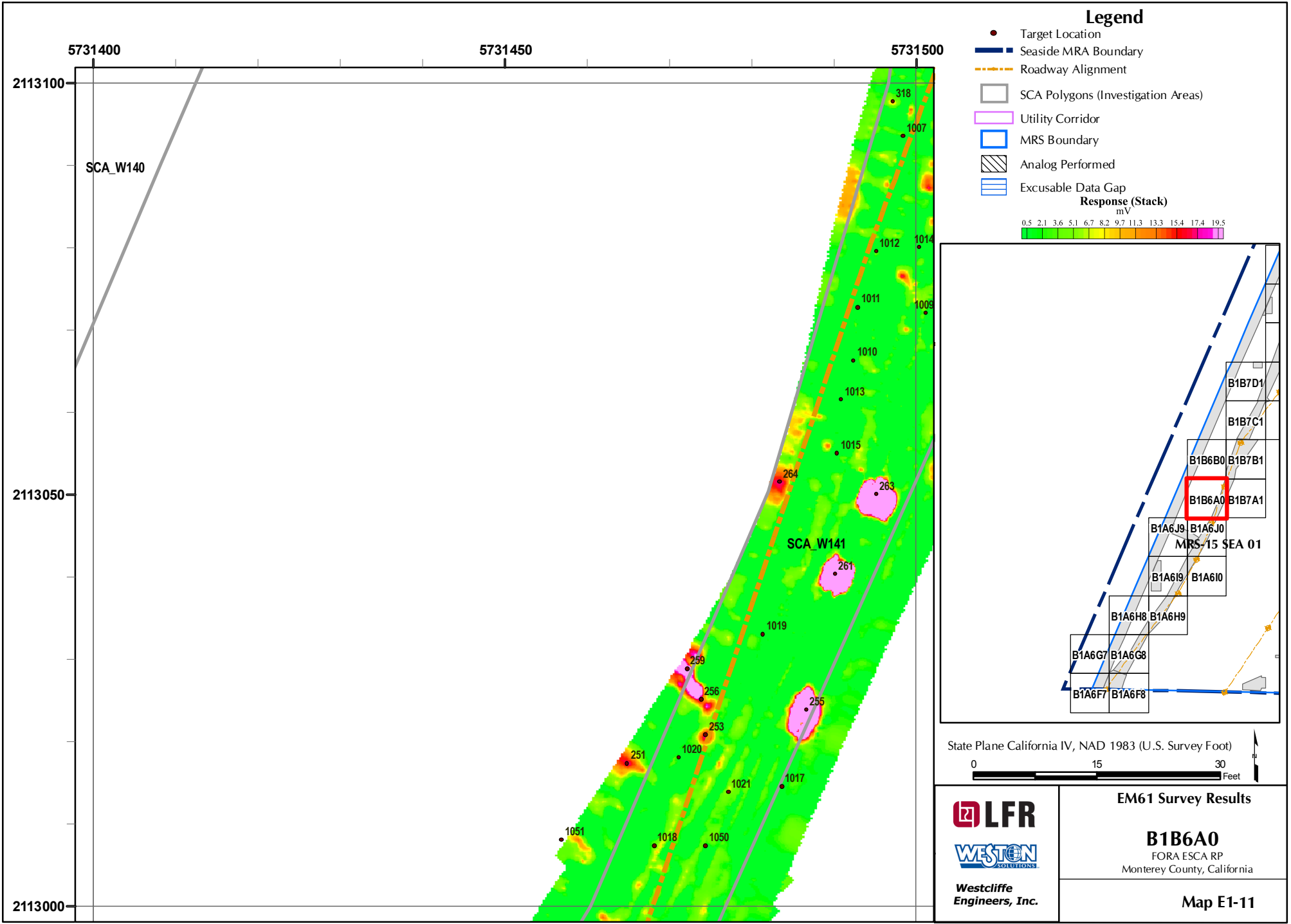
WESTON
SOLUTIONS

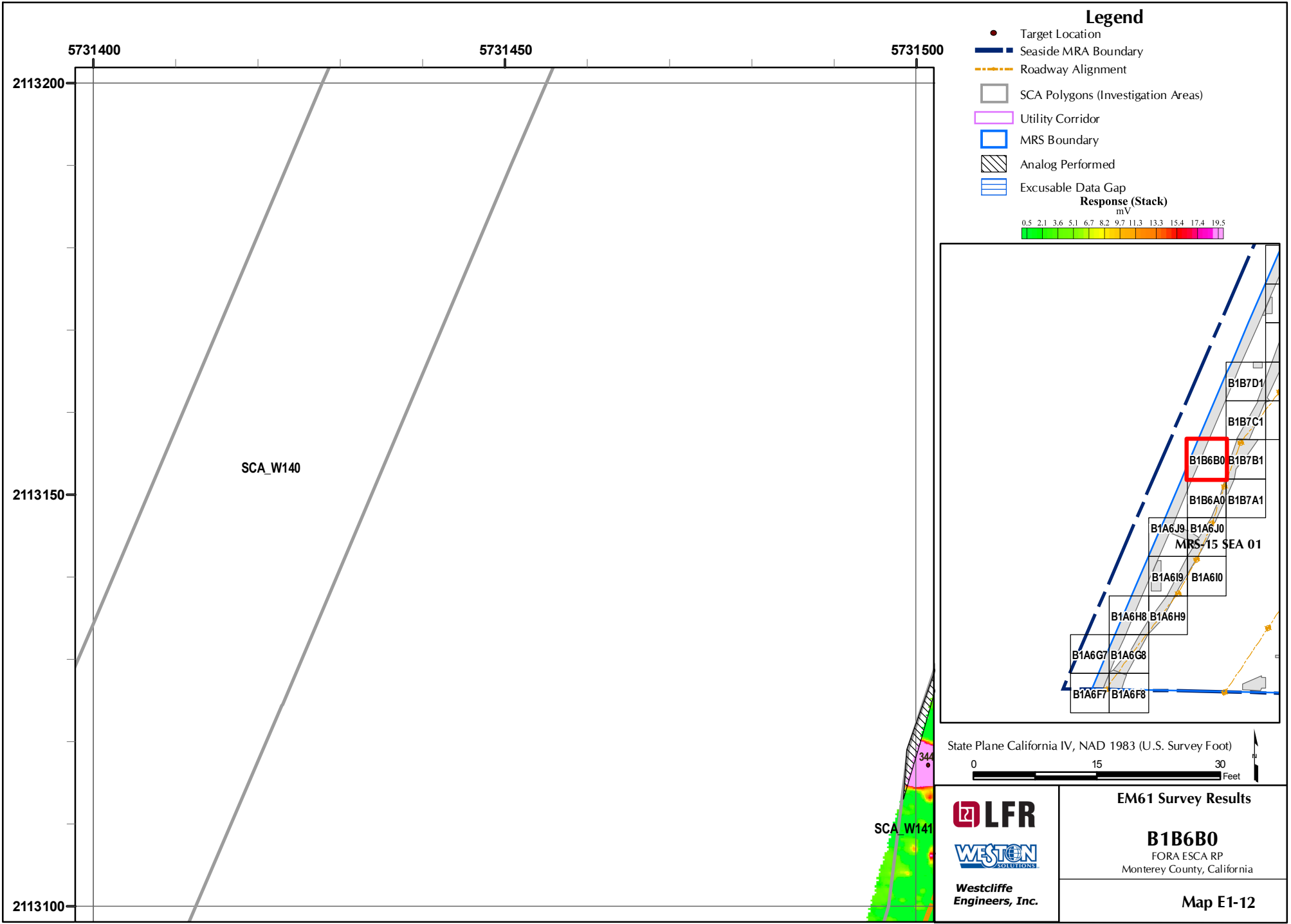
Westcliffe
Engineers, Inc.

EM61 Survey Results

B1A6J9
FORA ESCA RP
Monterey County, California

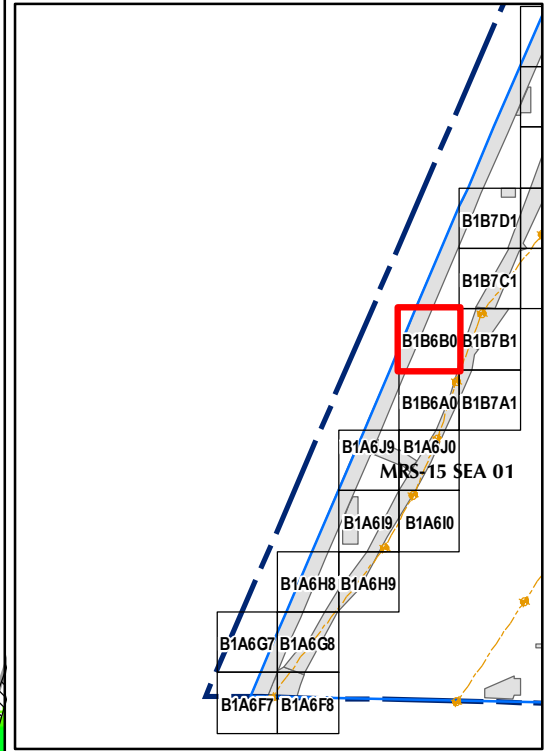
Map E1-10





Legend

- Target Location
 - ▬ Seaside MRA Boundary
 - - - Roadway Alignment
 - SCA Polygons (Investigation Areas)
 - ▭ Utility Corridor
 - ▭ MRS Boundary
 - ▨ Analog Performed
 - ▨ Excusable Data Gap
- Response (Stack)**
mV
- 0.5 2.1 3.6 5.1 6.7 8.2 9.7 11.3 13.3 15.4 17.4 19.5



State Plane California IV, NAD 1983 (U.S. Survey Foot)

0 15 30 Feet

LFR

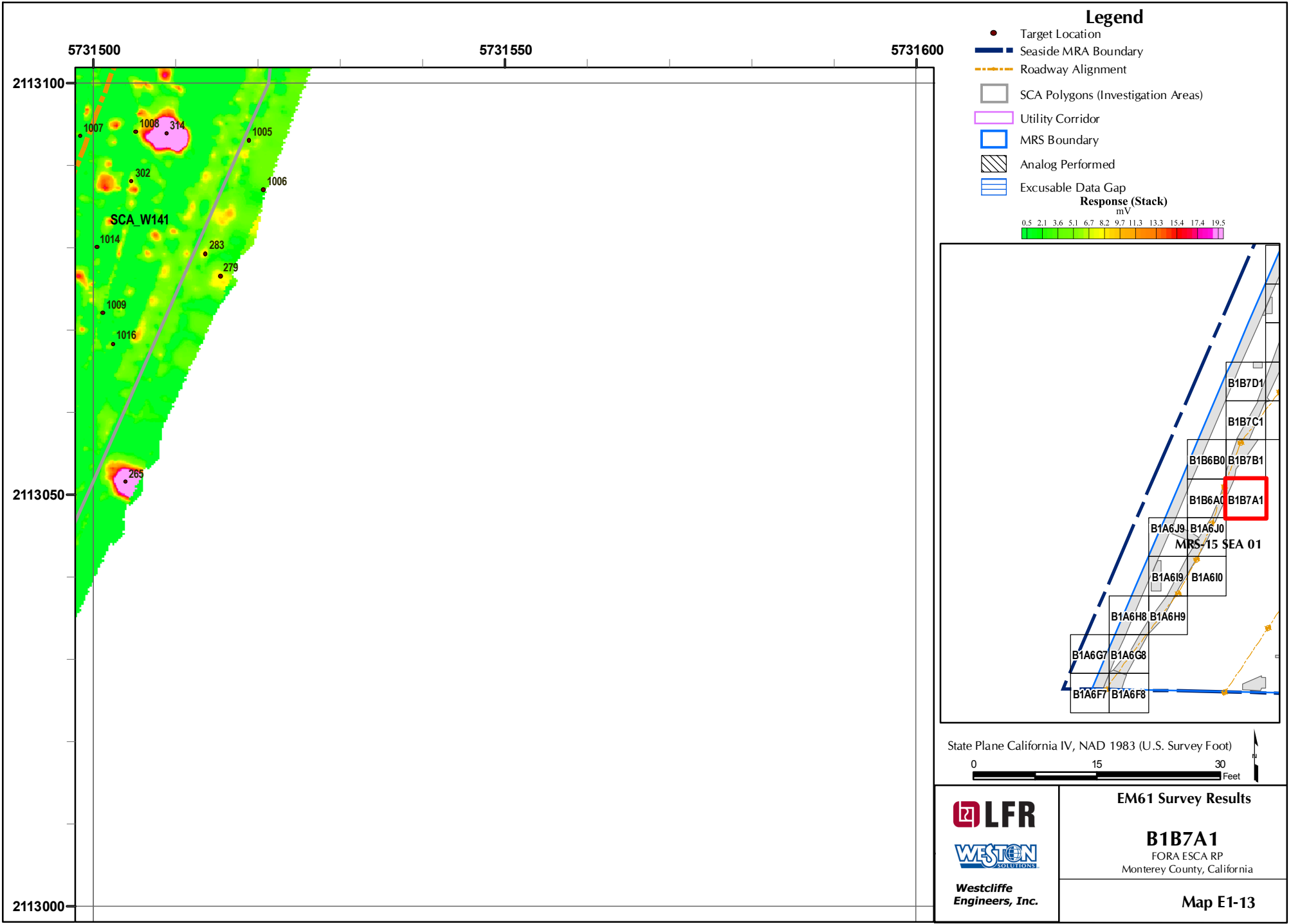
WESTON
SOLUTIONS

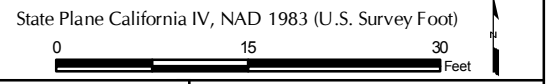
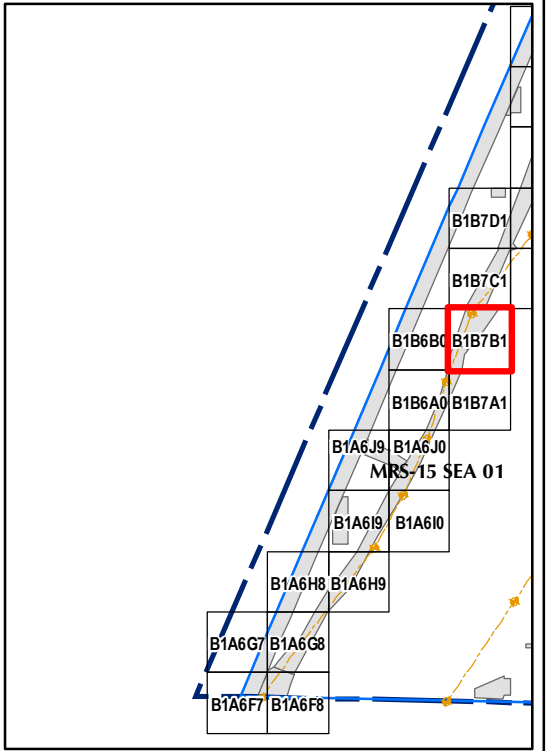
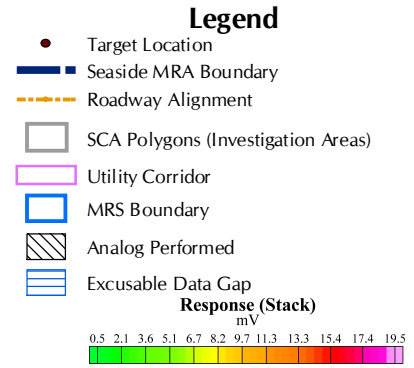
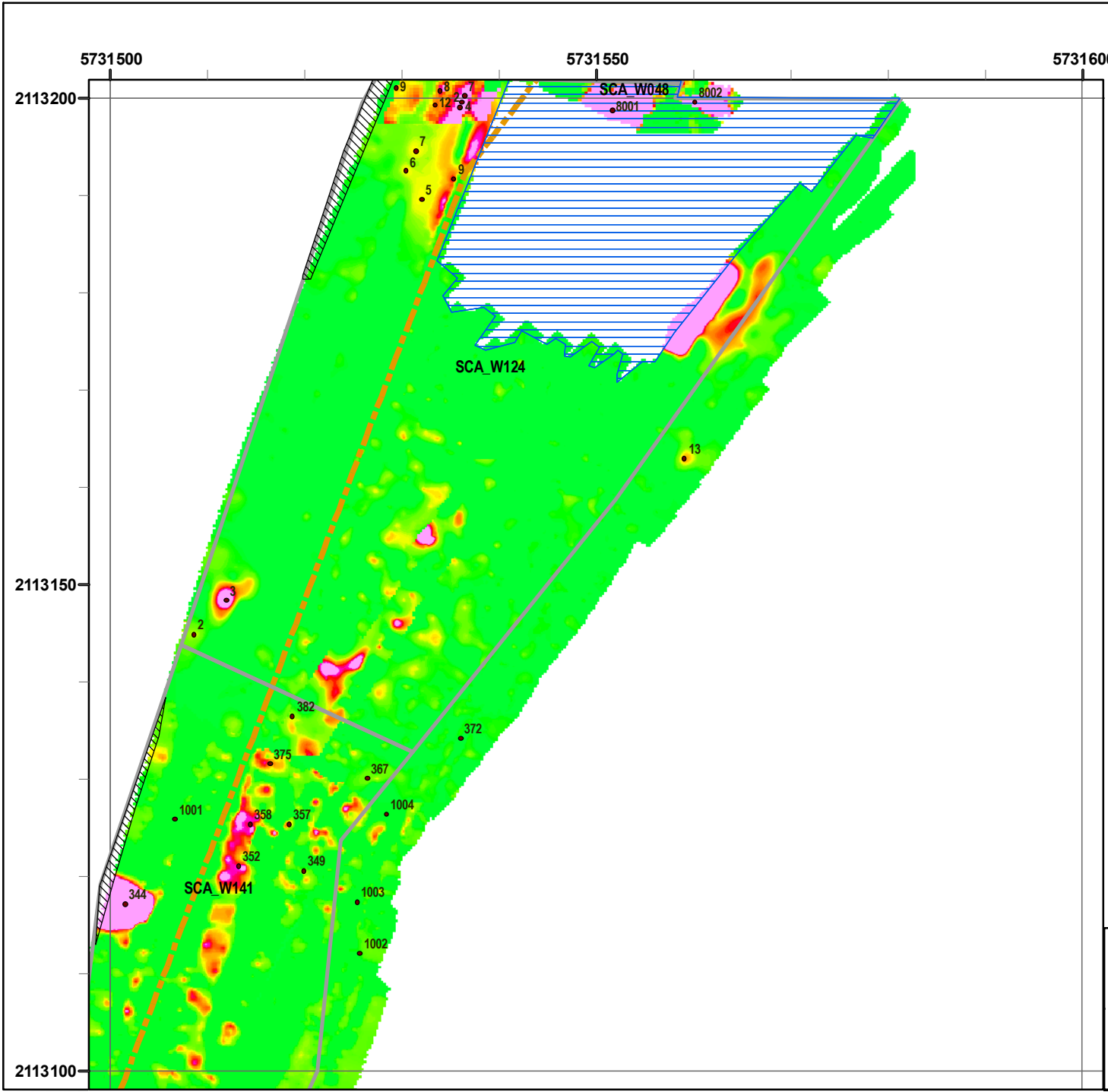
Westcliffe
Engineers, Inc.

EM61 Survey Results

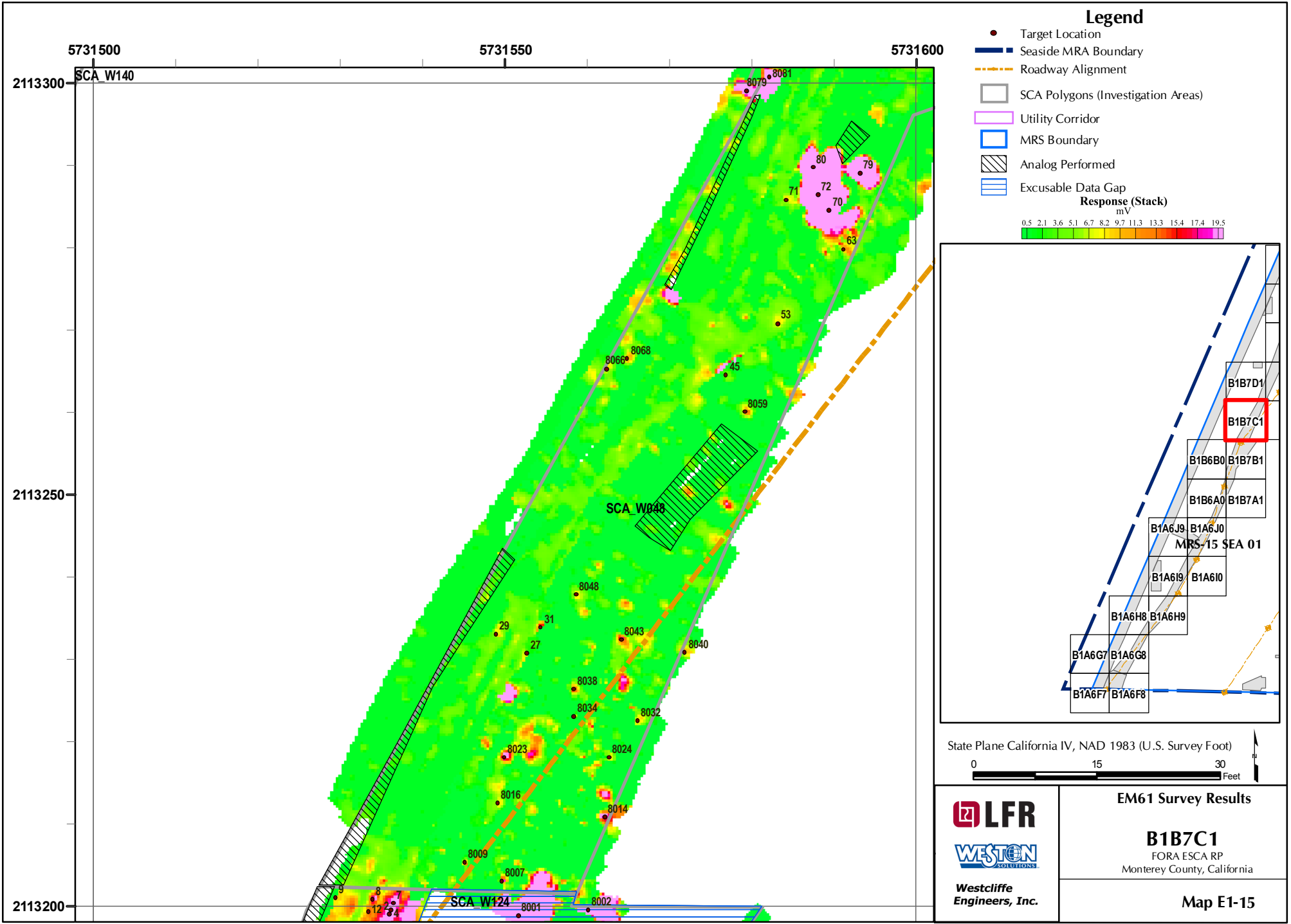
B1B6B0
FORA ESCA RP
Monterey County, California

Map E1-12



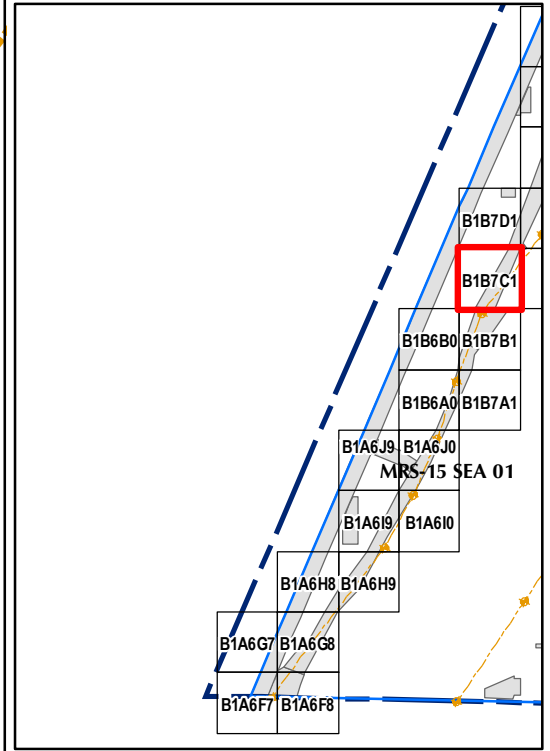


 Westcliffe Engineers, Inc.	EM61 Survey Results
	B1B7B1 FORA ESCA RP Monterey County, California
Map E1-14	



Legend

- Target Location
 - Seaside MRA Boundary
 - - - Roadway Alignment
 - SCA Polygons (Investigation Areas)
 - Utility Corridor
 - MRS Boundary
 - ▨ Analog Performed
 - ▨ Excusable Data Gap
- Response (Stack)**
mV
- 0.5 2.1 3.6 5.1 6.7 8.2 9.7 11.3 13.3 15.4 17.4 19.5



State Plane California IV, NAD 1983 (U.S. Survey Foot)

0 15 30 Feet

LFR

WESTON
SOLUTIONS

Westcliffe
Engineers, Inc.

EM61 Survey Results

B1B7C1
FORA ESCA RP
Monterey County, California

Map E1-15

