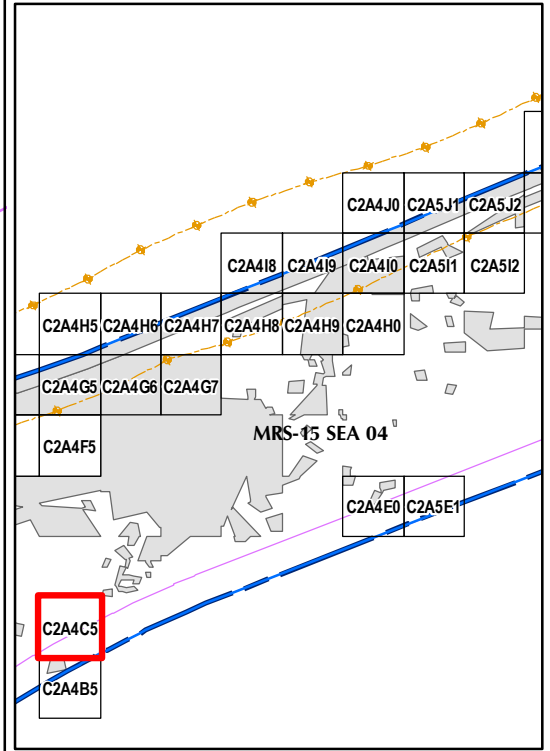


Legend

- Target Location
 - Seaside MRA Boundary
 - Roadway Alignment
 - SCA Polygons (Investigation Areas)
 - Utility Corridor
 - MRS Boundary
 - ▨ Analog Performed
 - ▨ Excusable Data Gap
- Response (Stack)**
mV
- 0.5 2.1 3.6 5.1 6.7 8.2 9.7 11.3 13.3 15.4 17.4 19.5



State Plane California IV, NAD 1983 (U.S. Survey Foot)

0 15 30 Feet

LFR

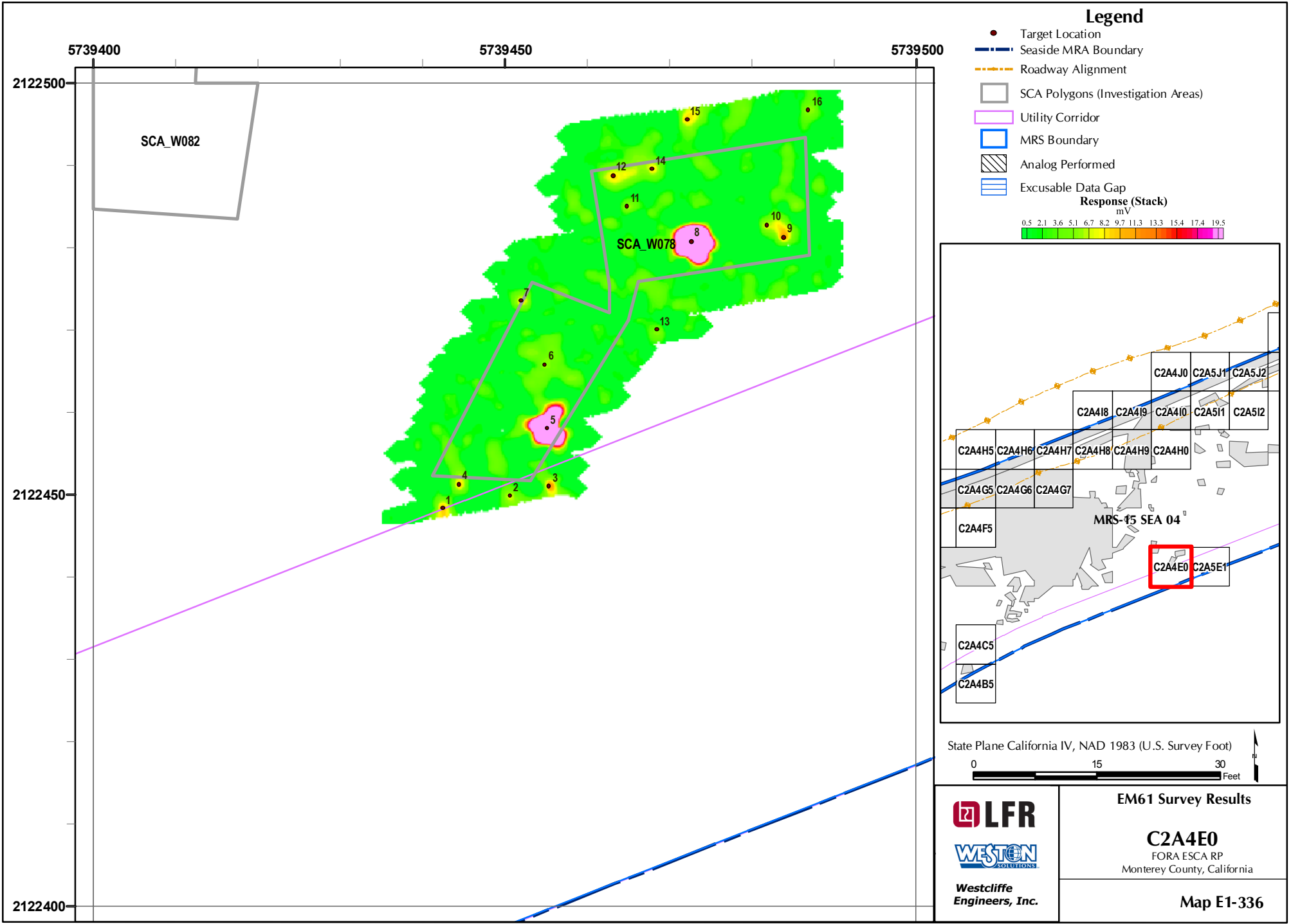
WESTON
SOLUTIONS

Westcliffe
Engineers, Inc.

EM61 Survey Results

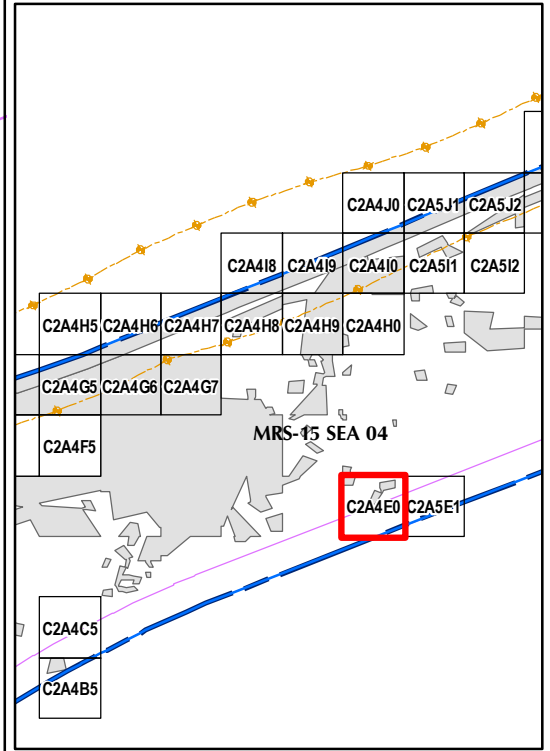
C2A4C5
FORA ESCA RP
Monterey County, California

Map E1-335



Legend

- Target Location
 - Seaside MRA Boundary
 - - - Roadway Alignment
 - SCA Polygons (Investigation Areas)
 - ▭ Utility Corridor
 - ▭ MRS Boundary
 - ▨ Analog Performed
 - ▭ Excusable Data Gap
- Response (Stack)**
mV
- 0.5 2.1 3.6 5.1 6.7 8.2 9.7 11.3 13.3 15.4 17.4 19.5



State Plane California IV, NAD 1983 (U.S. Survey Foot)

0 15 30 Feet

LFR

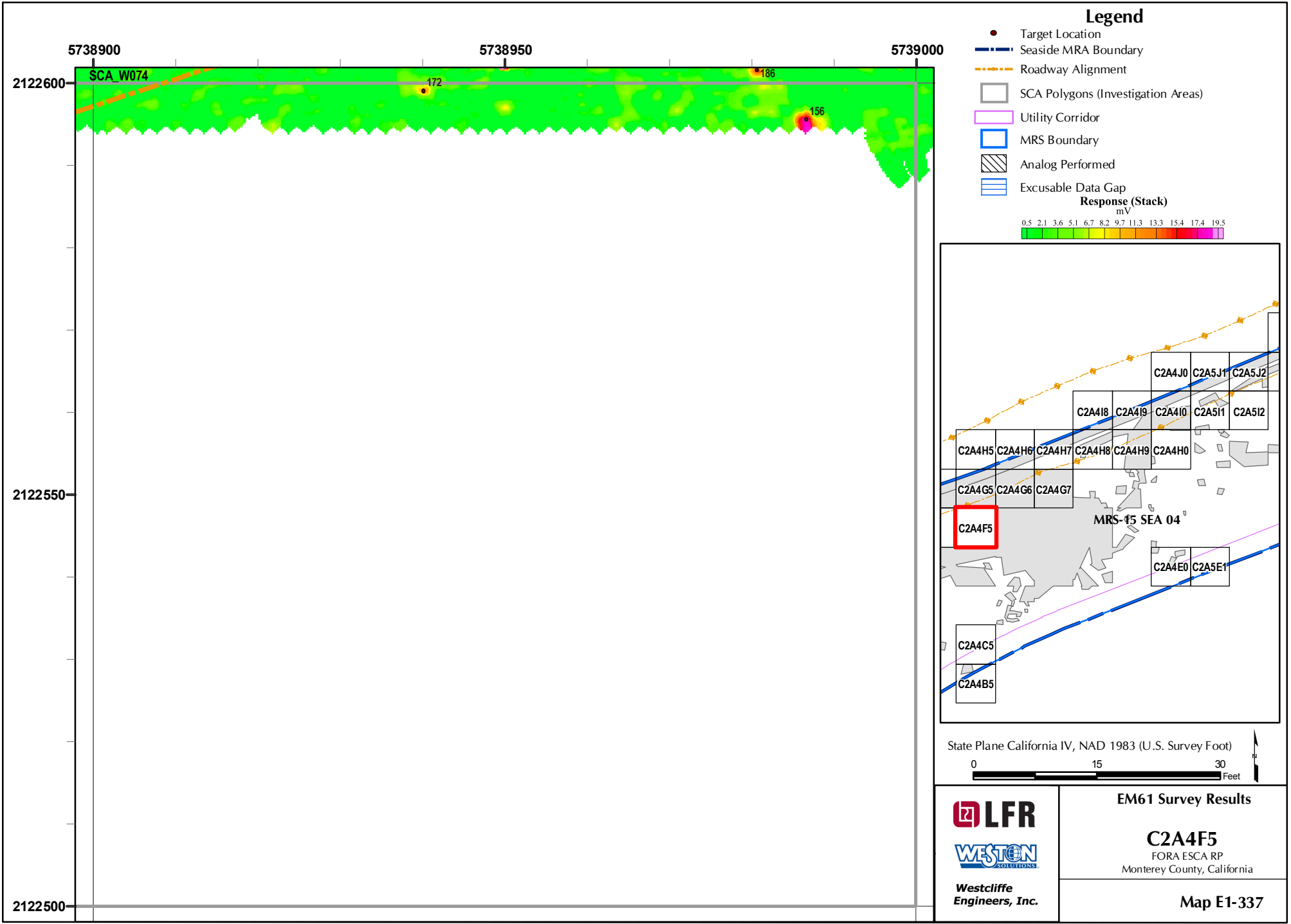
WESTON SOLUTIONS

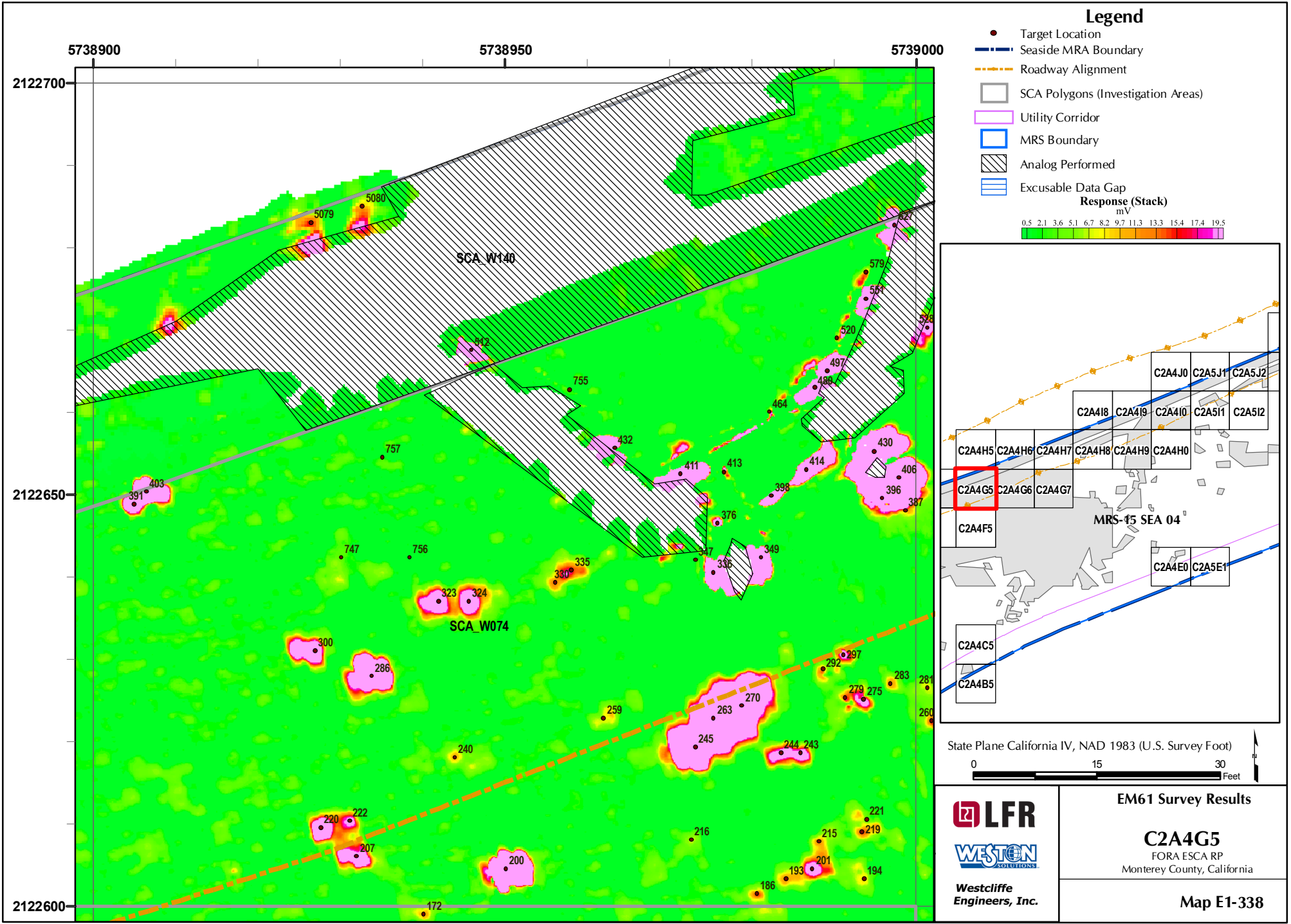
Westcliffe Engineers, Inc.

EM61 Survey Results

C2A4E0
FORA ESCA RP
Monterey County, California

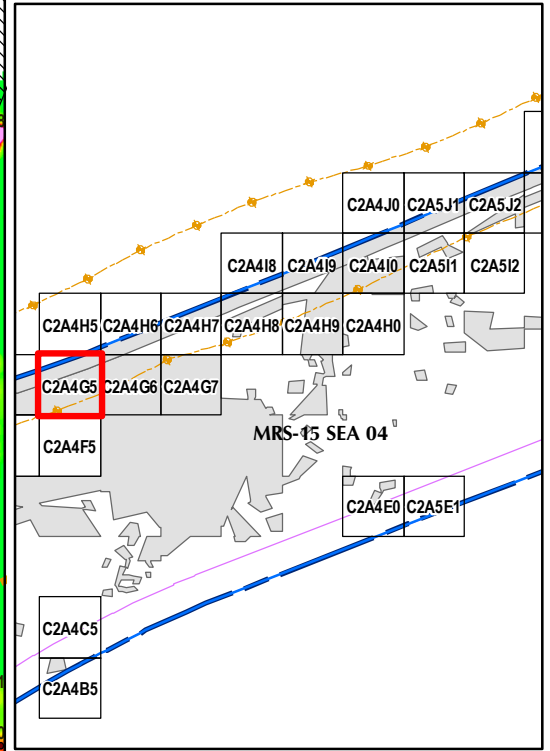
Map E1-336





Legend

- Target Location
 - Seaside MRA Boundary
 - Roadway Alignment
 - SCA Polygons (Investigation Areas)
 - Utility Corridor
 - MRS Boundary
 - ▨ Analog Performed
 - ▨ Excusable Data Gap
- Response (Stack)**
mV
- 0.5 2.1 3.6 5.1 6.7 8.2 9.7 11.3 13.3 15.4 17.4 19.5



State Plane California IV, NAD 1983 (U.S. Survey Foot)

0 15 30 Feet

LFR

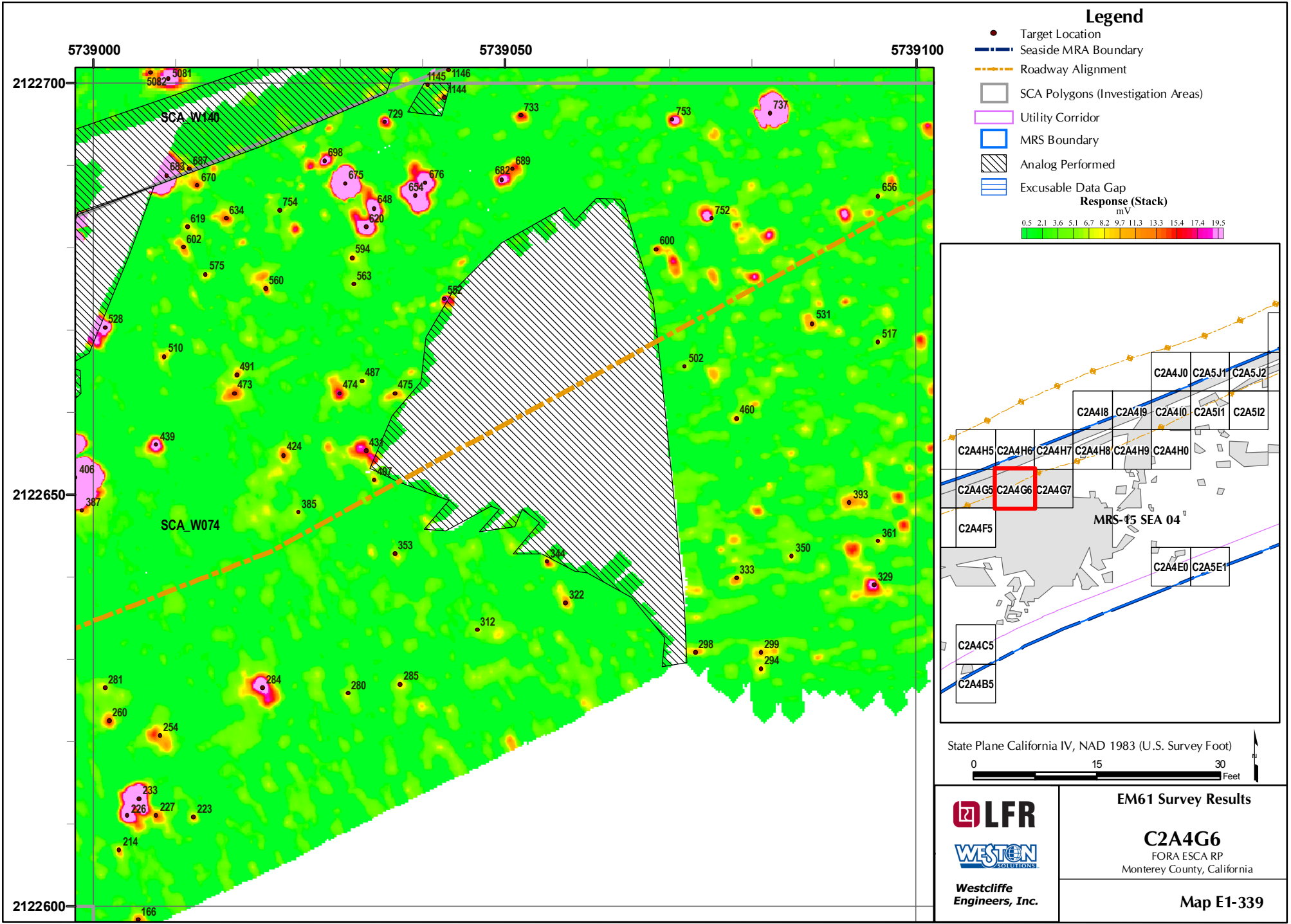
WESTON
SOLUTIONS

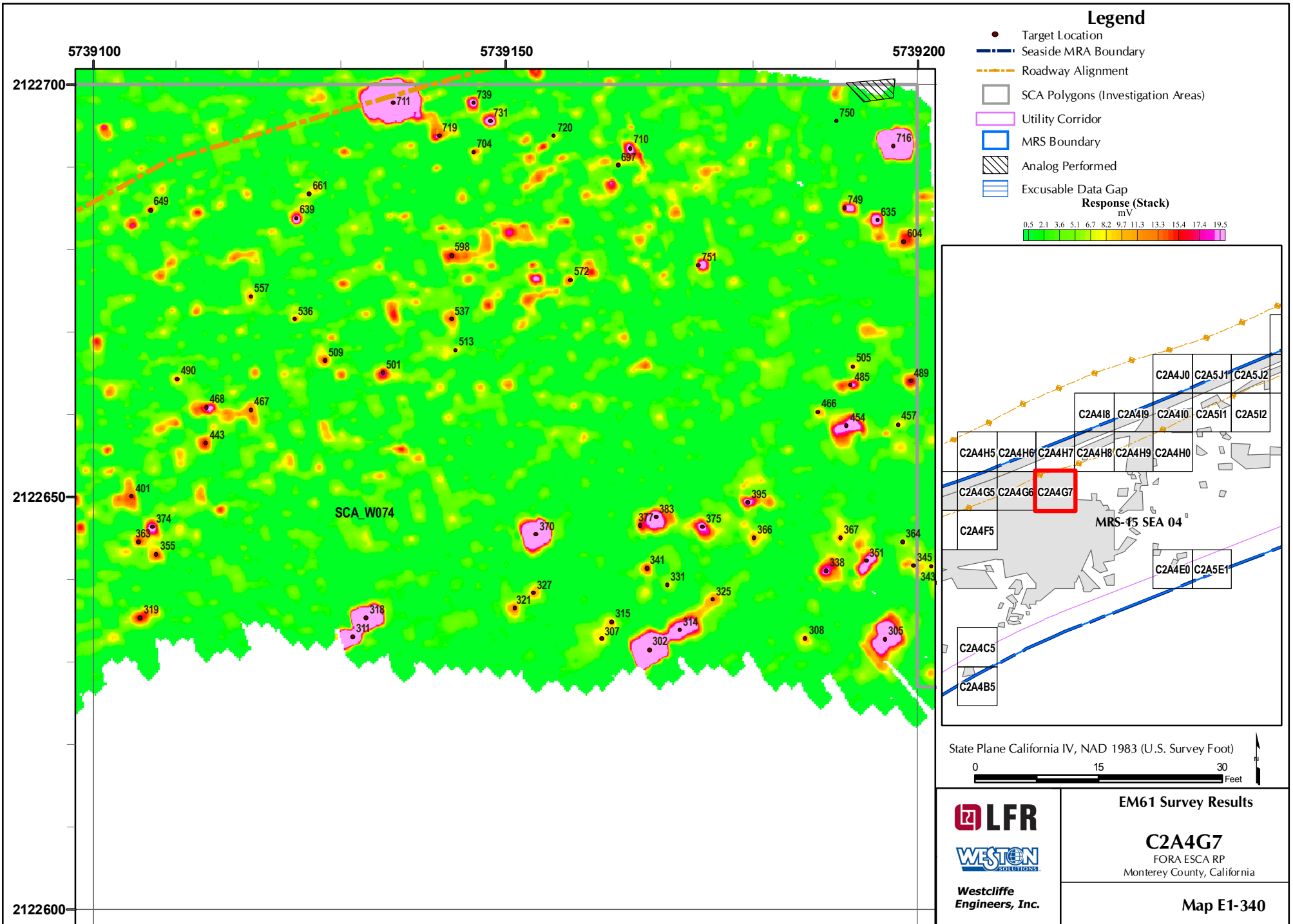
Westcliffe
Engineers, Inc.

EM61 Survey Results

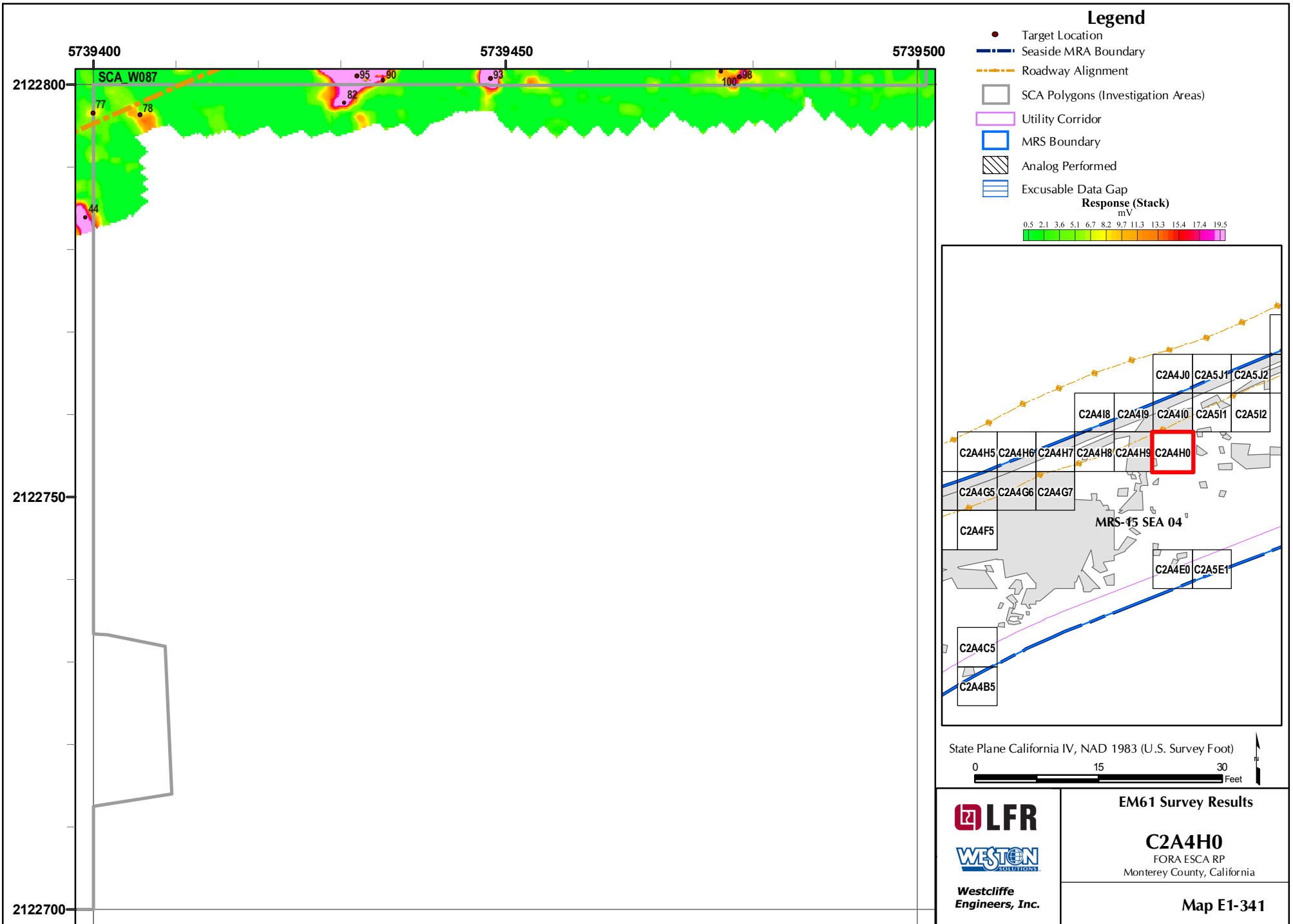
C2A4G5
FORA ESCA RP
Monterey County, California

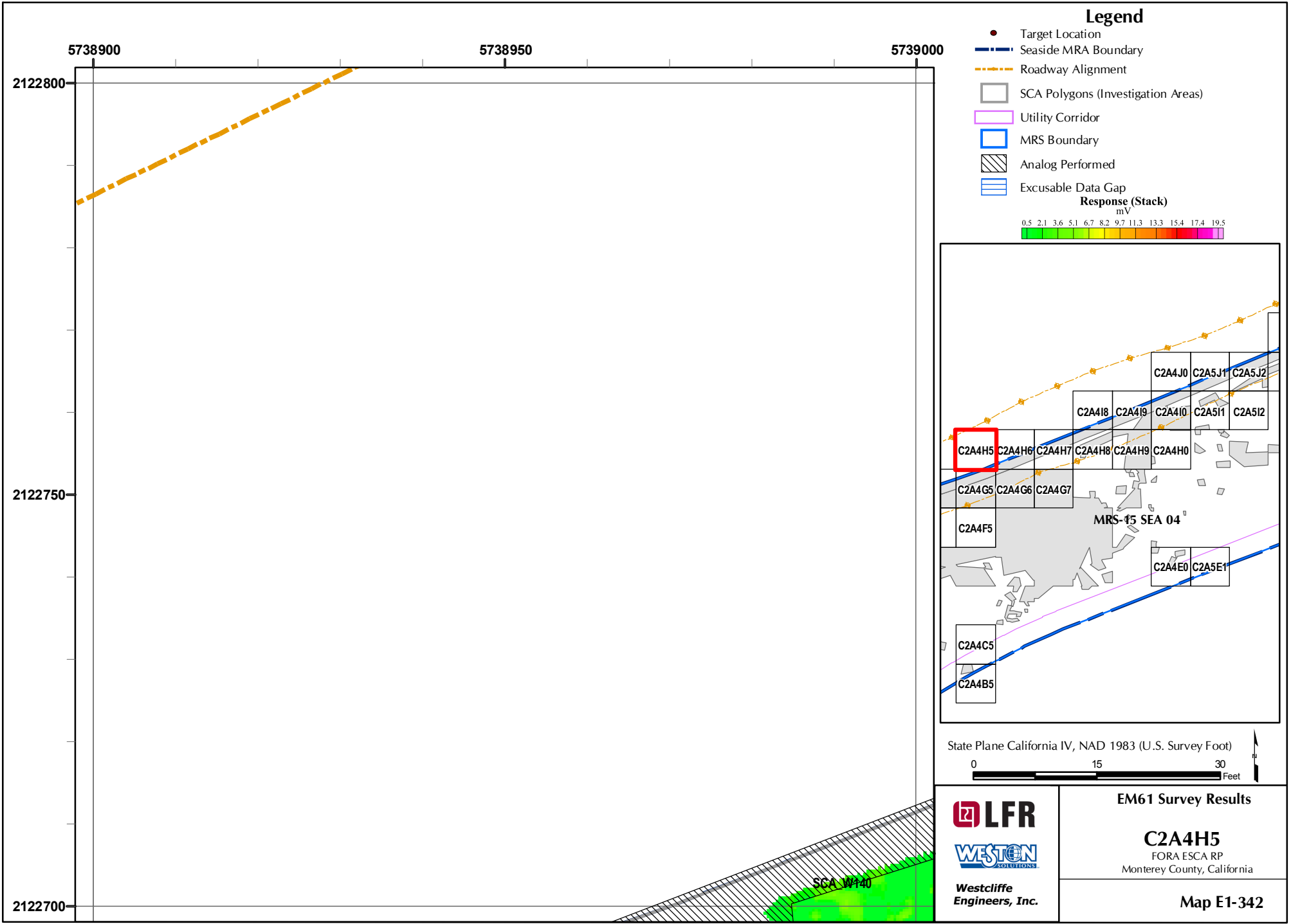
Map E1-338

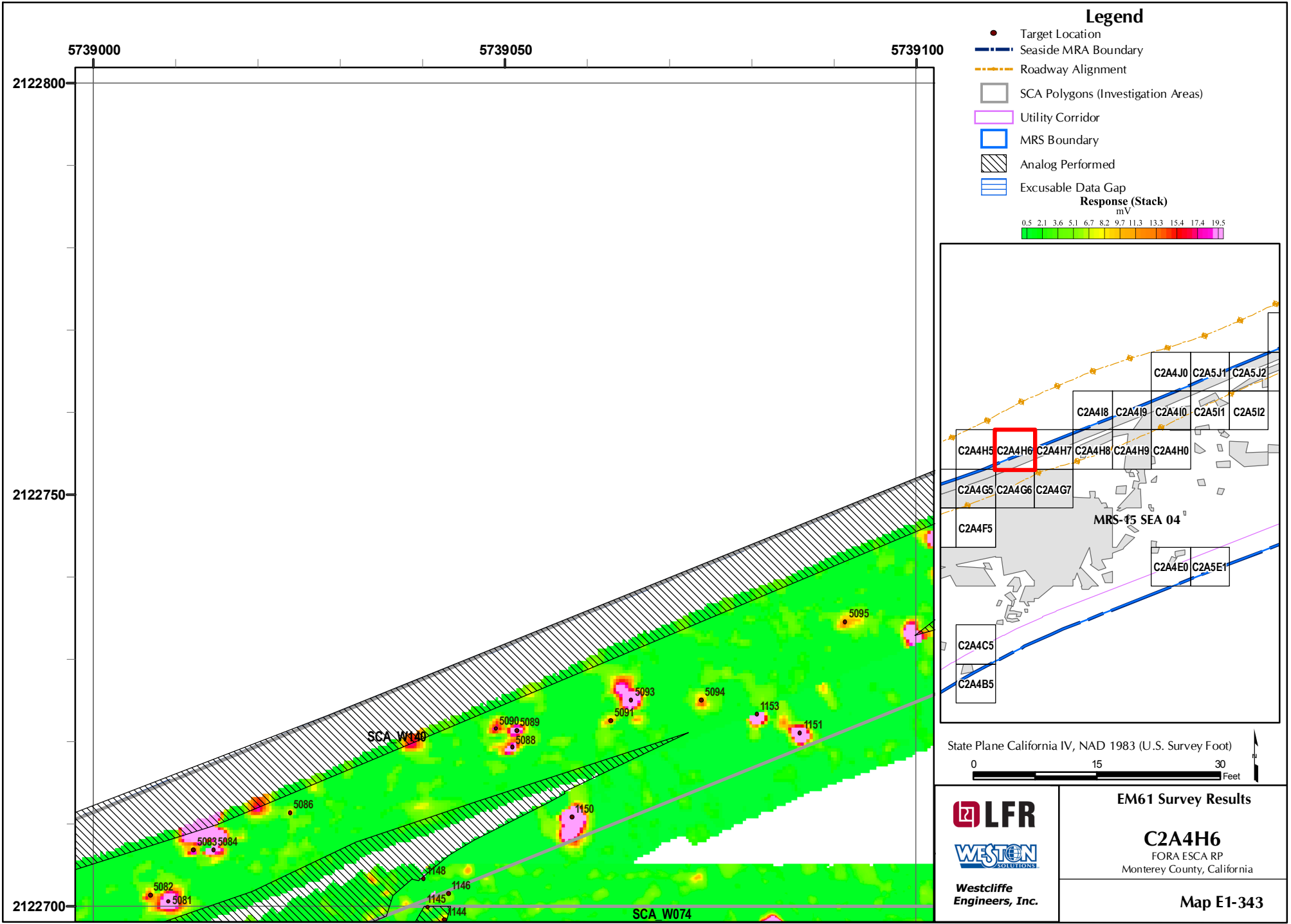




<p>LFR WESTON SOLUTIONS</p> <p>Westcliffe Engineers, Inc.</p>	<p>EM61 Survey Results</p> <p>C2A4G7 FORA ESCA RP Monterey County, California</p>
	<p>Map E1-340</p>

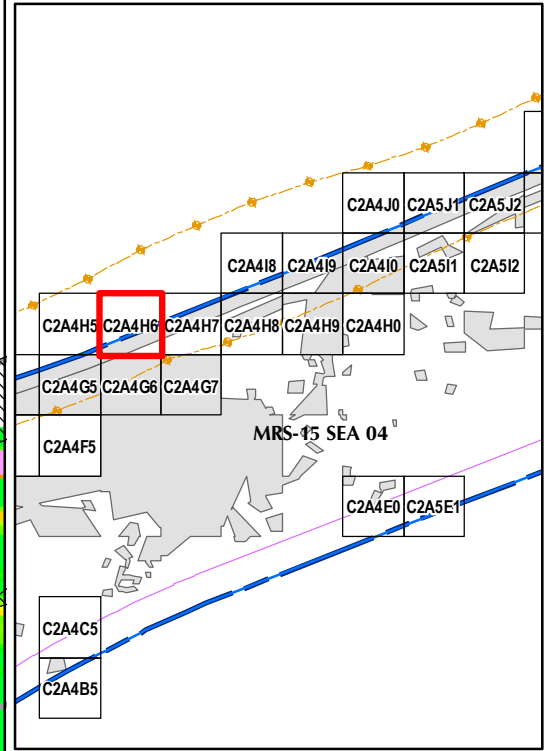






Legend

- Target Location
 - Seaside MRA Boundary
 - Roadway Alignment
 - SCA Polygons (Investigation Areas)
 - Utility Corridor
 - MRS Boundary
 - ▨ Analog Performed
 - ▨ Excusable Data Gap
- Response (Stack)**
mV
- 0.5 2.1 3.6 5.1 6.7 8.2 9.7 11.3 13.3 15.4 17.4 19.5



State Plane California IV, NAD 1983 (U.S. Survey Foot)

0 15 30 Feet

LFR

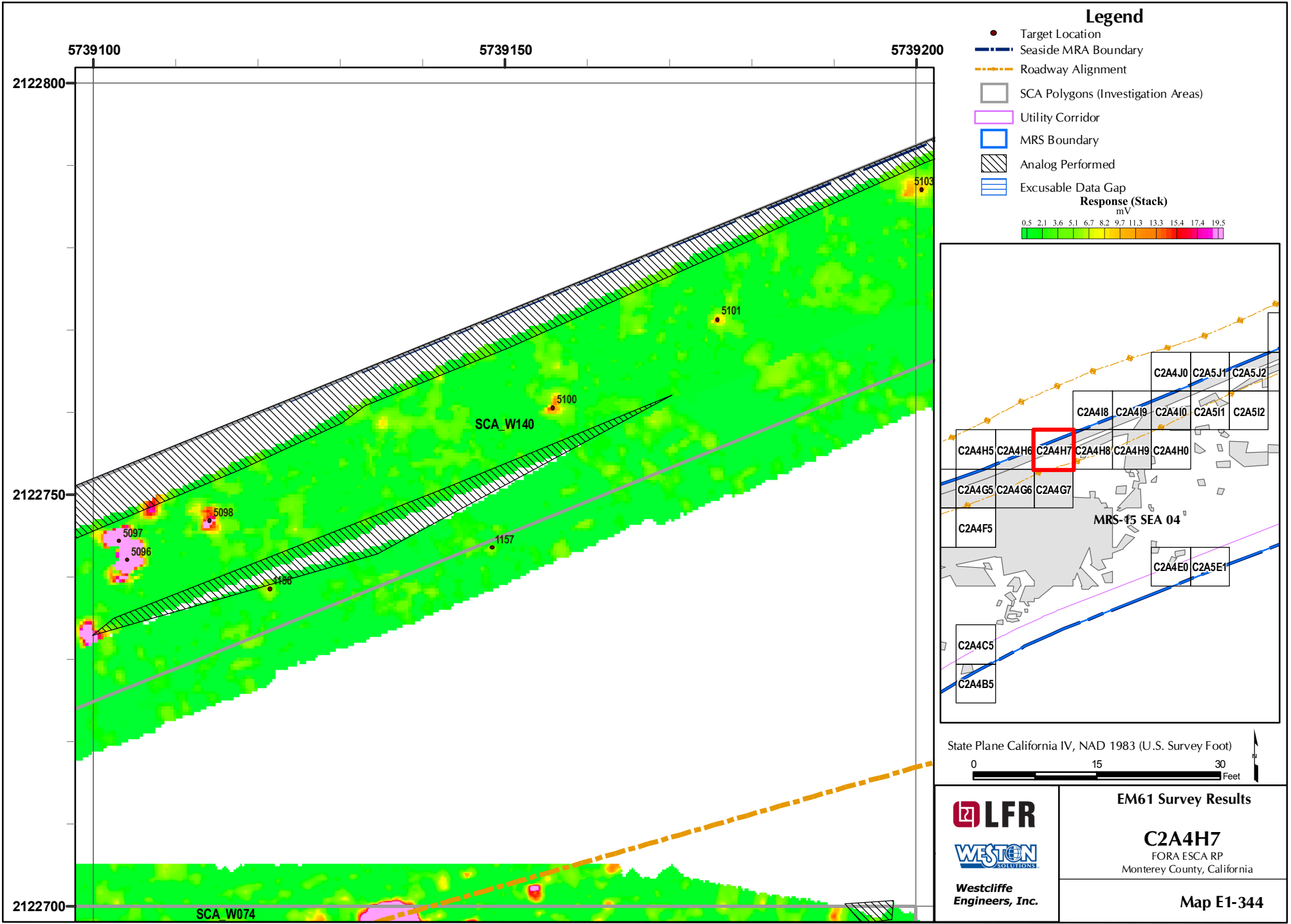
WESTON
SOLUTIONS

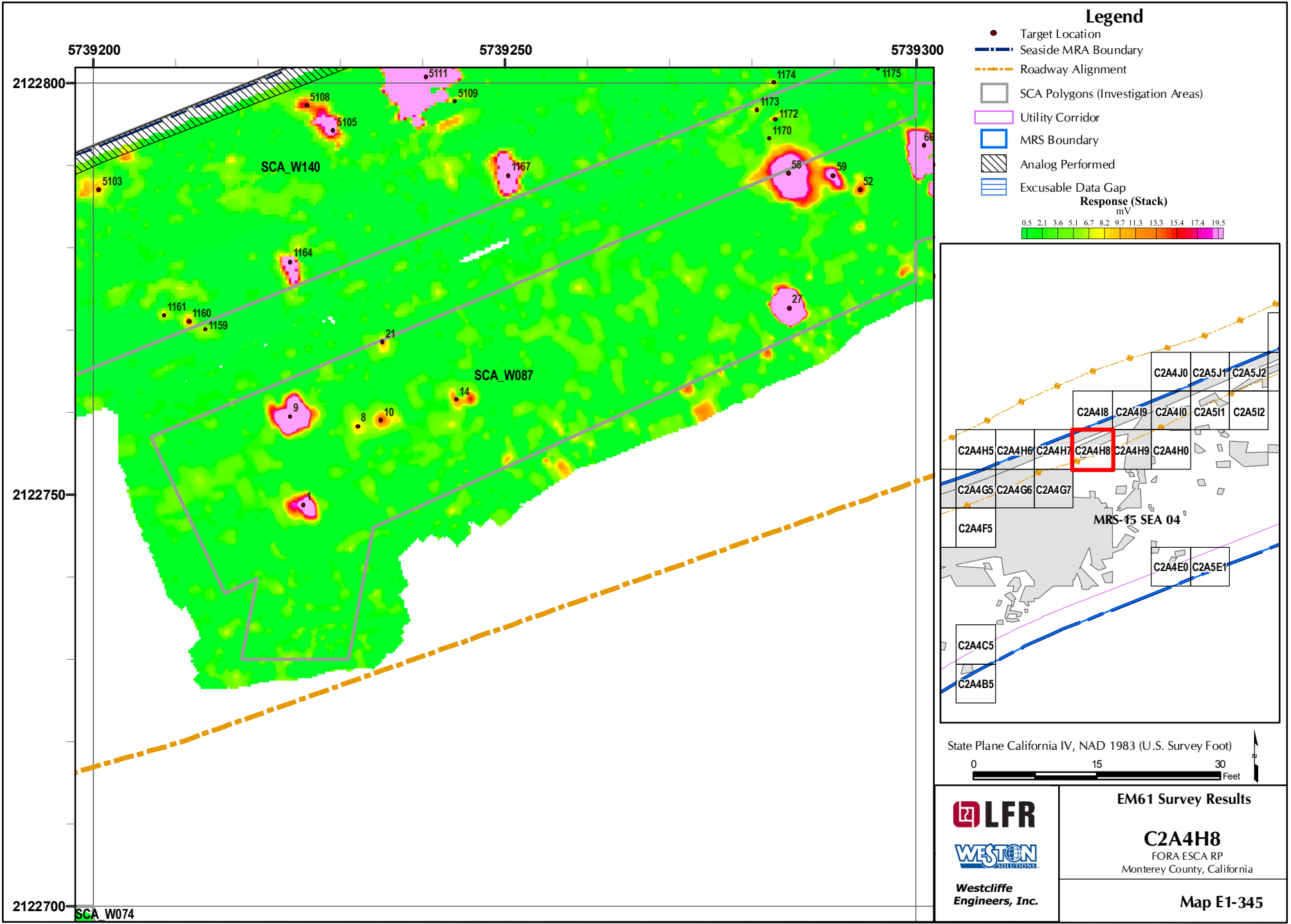
Westcliffe
Engineers, Inc.

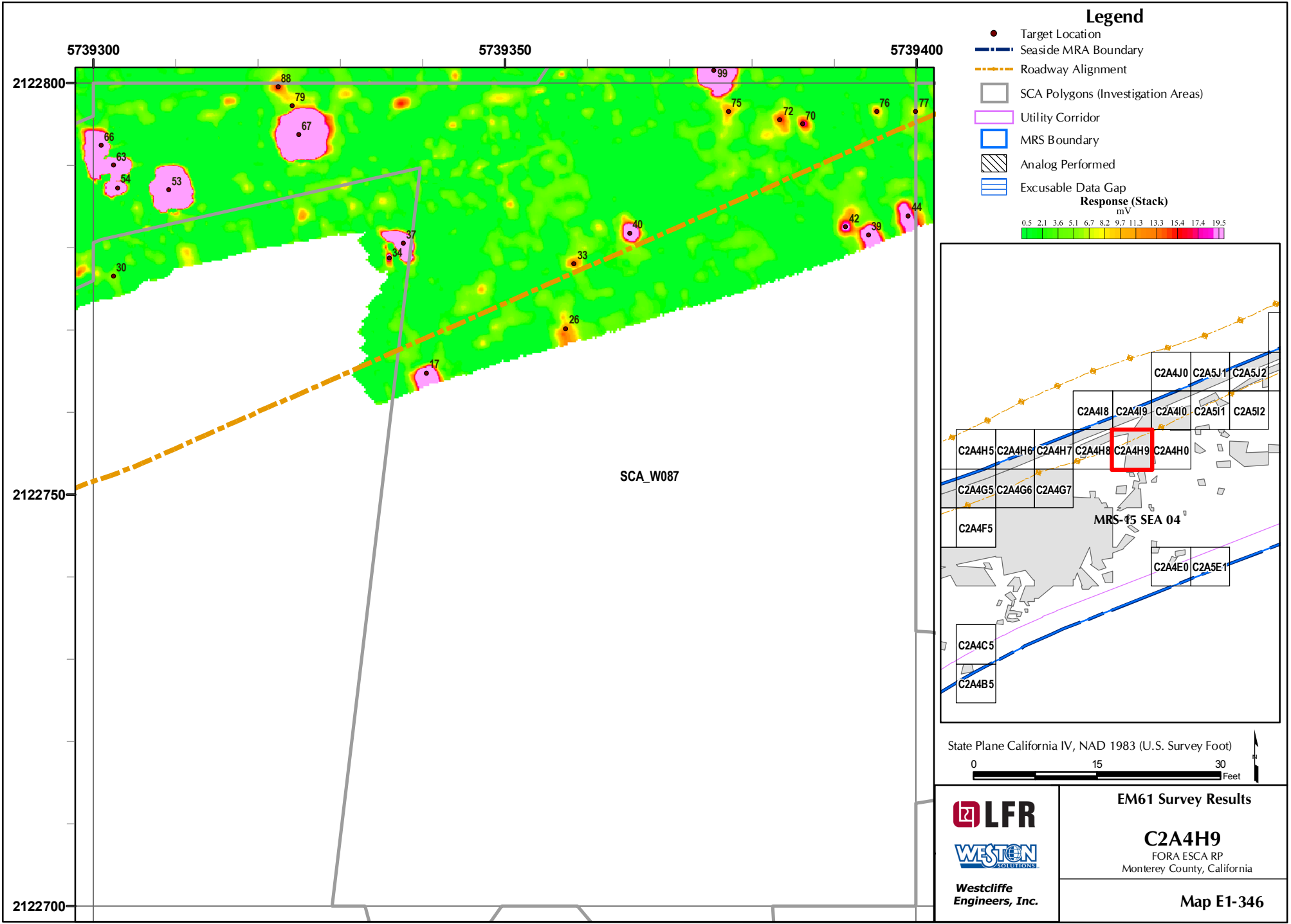
EM61 Survey Results

C2A4H6
FORA ESCA RP
Monterey County, California

Map E1-343

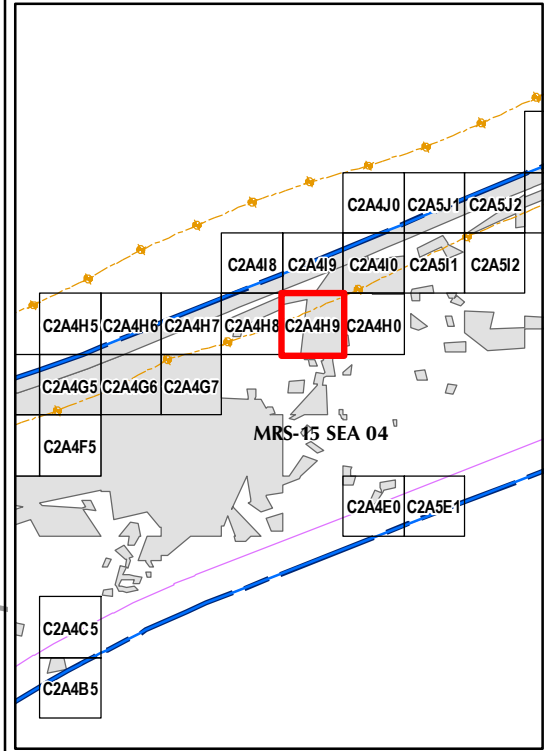






Legend

- Target Location
 - Seaside MRA Boundary
 - - - Roadway Alignment
 - SCA Polygons (Investigation Areas)
 - Utility Corridor
 - MRS Boundary
 - ▨ Analog Performed
 - ▨ Excusable Data Gap
- Response (Stack)**
mV
- 0.5 2.1 3.6 5.1 6.7 8.2 9.7 11.3 13.3 15.4 17.4 19.5



State Plane California IV, NAD 1983 (U.S. Survey Foot)

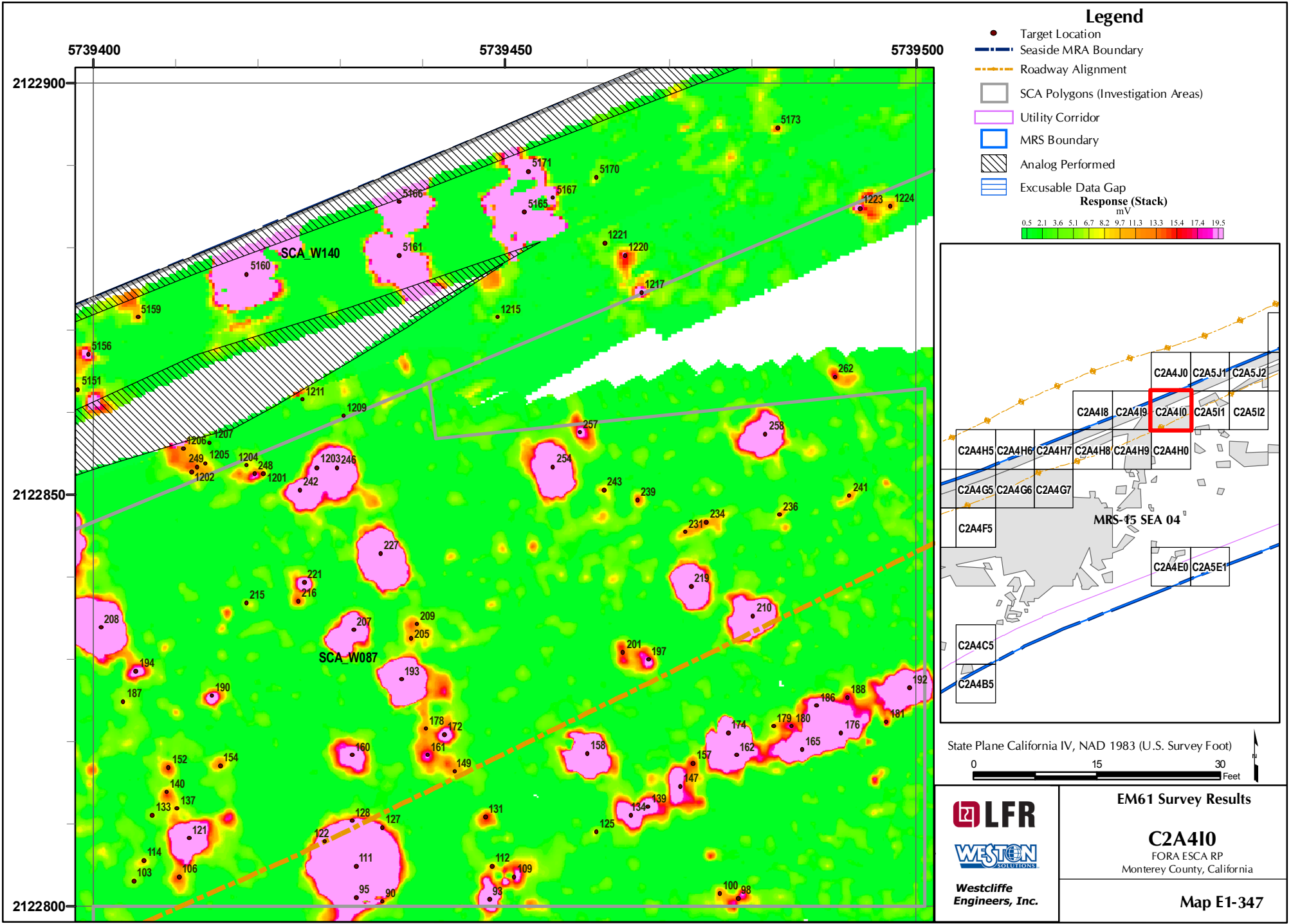
0 15 30 Feet

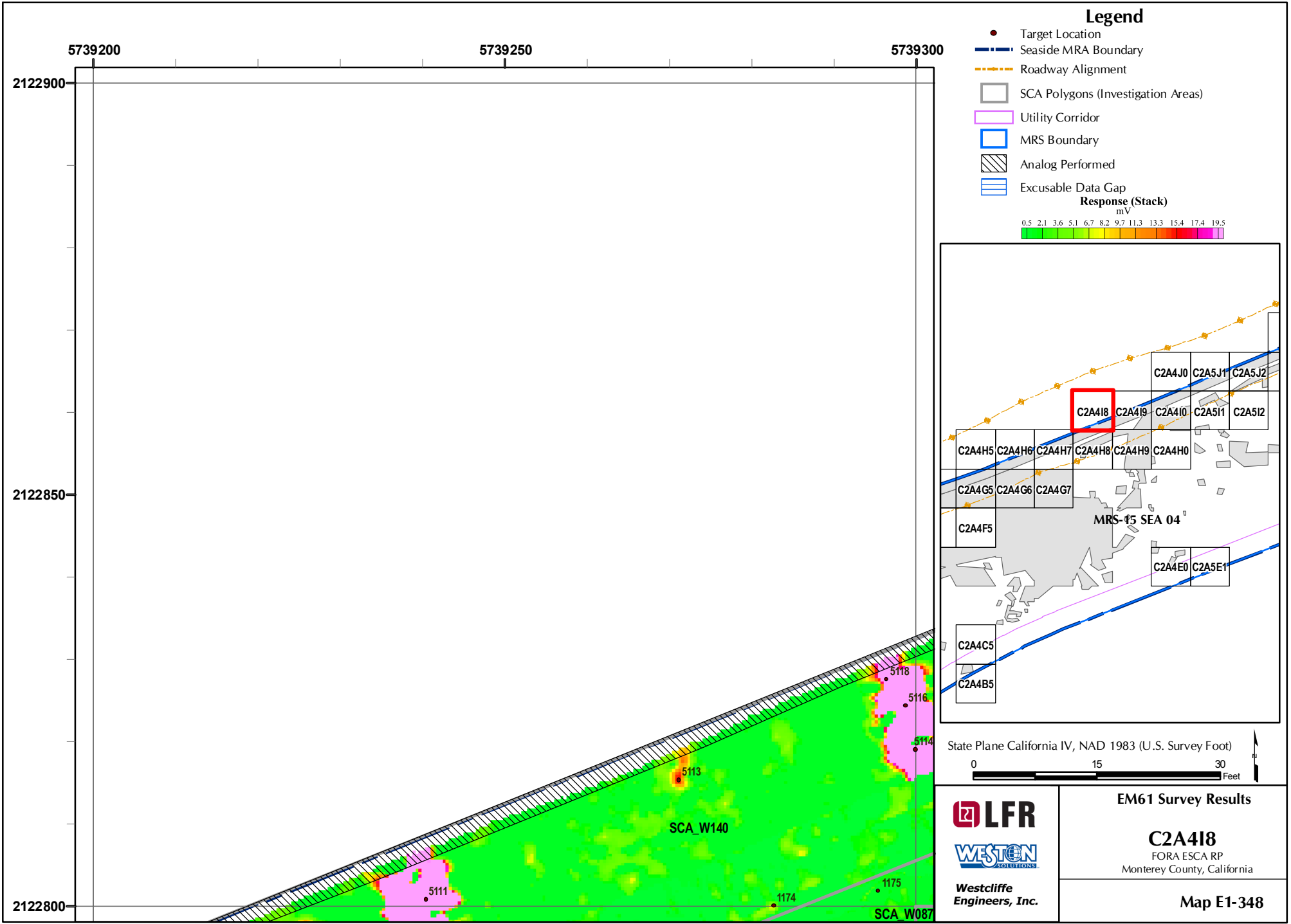


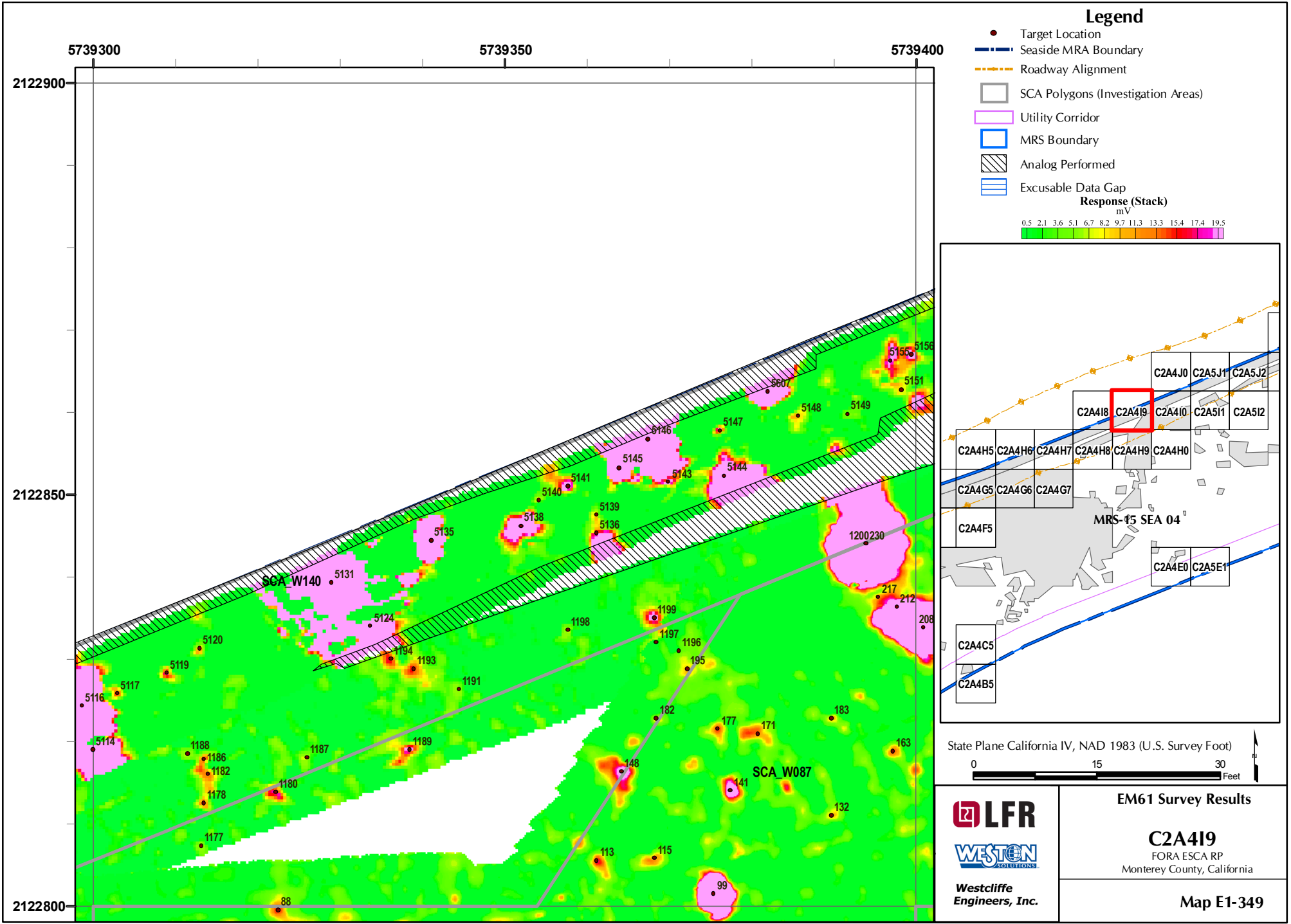
EM61 Survey Results

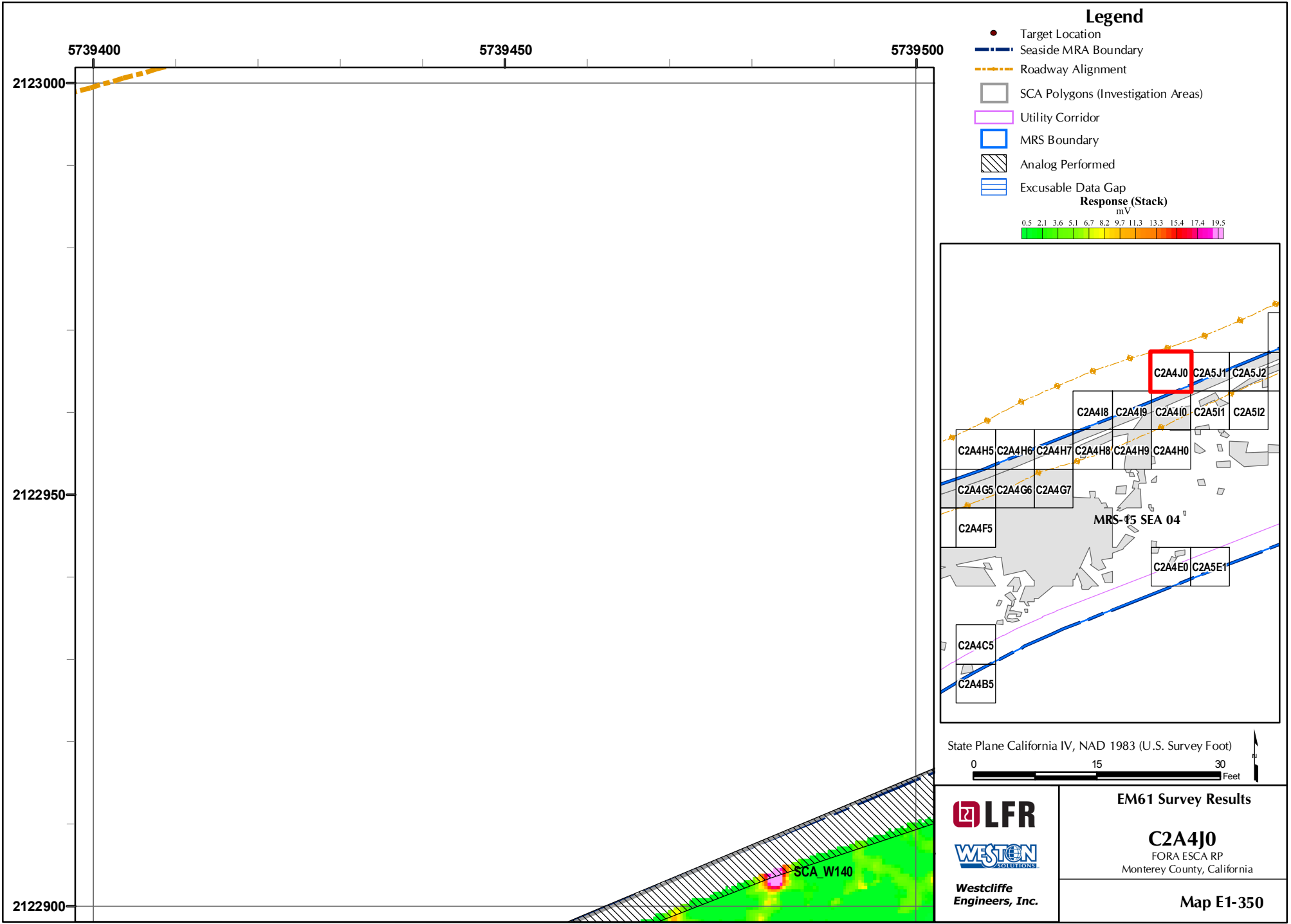
C2A4H9
FORA ESCA RP
Monterey County, California

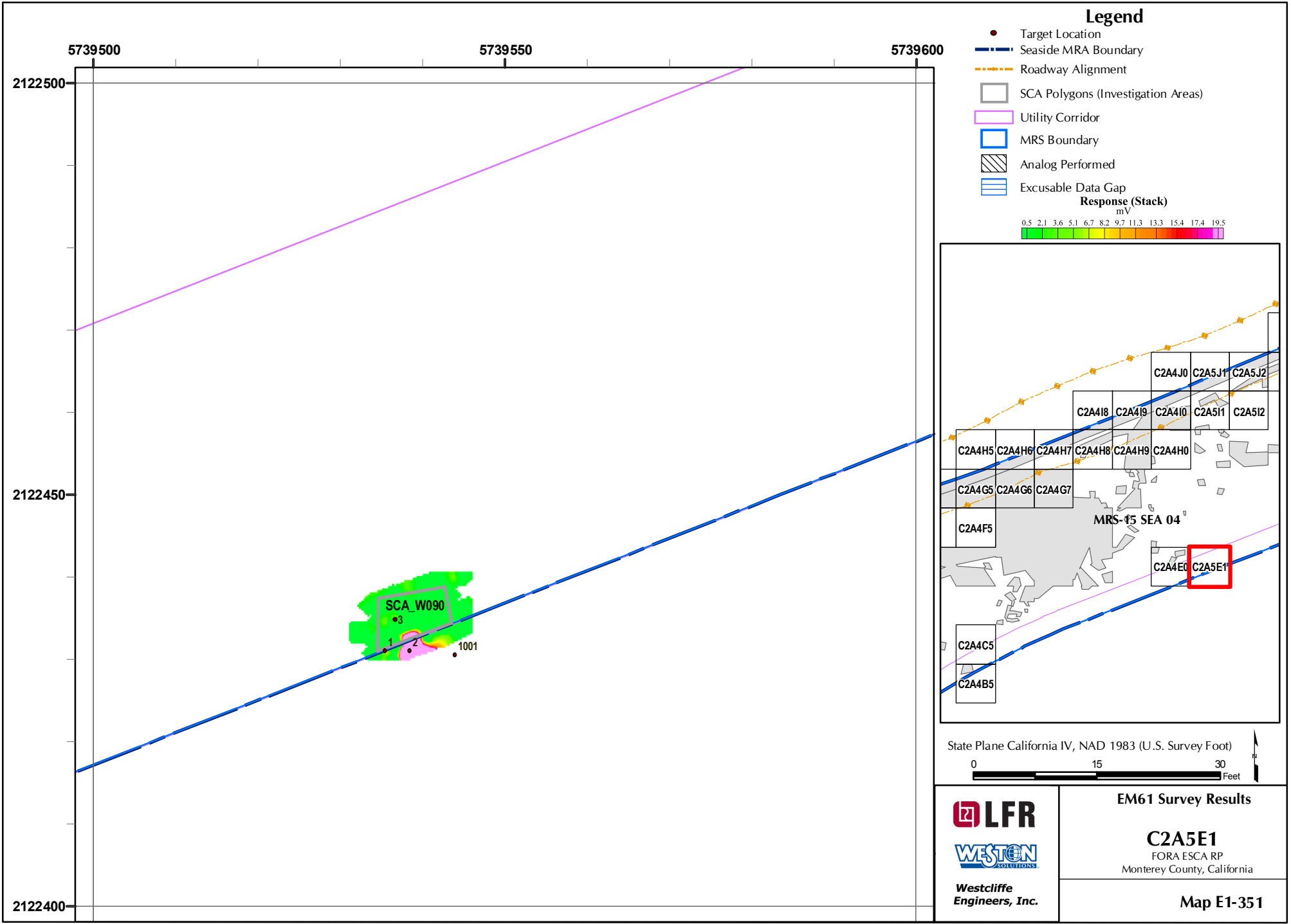
Map E1-346





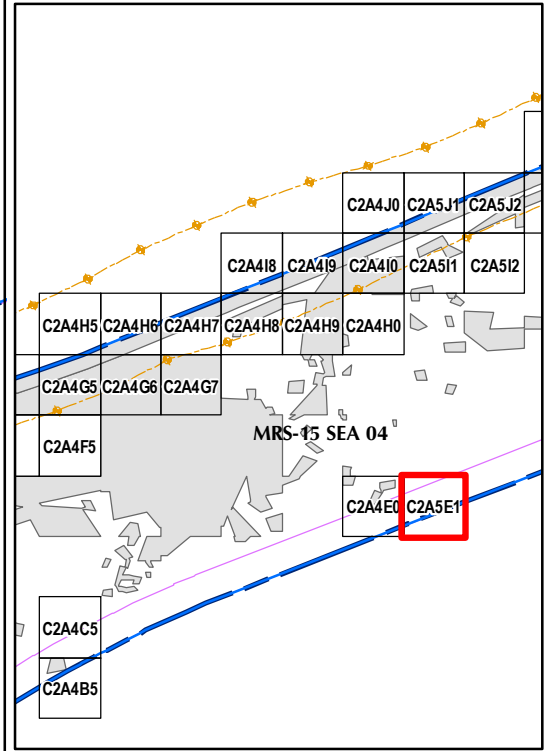






Legend

- Target Location
 - Seaside MRA Boundary
 - Roadway Alignment
 - SCA Polygons (Investigation Areas)
 - Utility Corridor
 - MRS Boundary
 - ▨ Analog Performed
 - ▨ Excusable Data Gap
- Response (Stack)**
mV
- 0.5 2.1 3.6 5.1 6.7 8.2 9.7 11.3 13.3 15.4 17.4 19.5



State Plane California IV, NAD 1983 (U.S. Survey Foot)

0 15 30 Feet

LFR

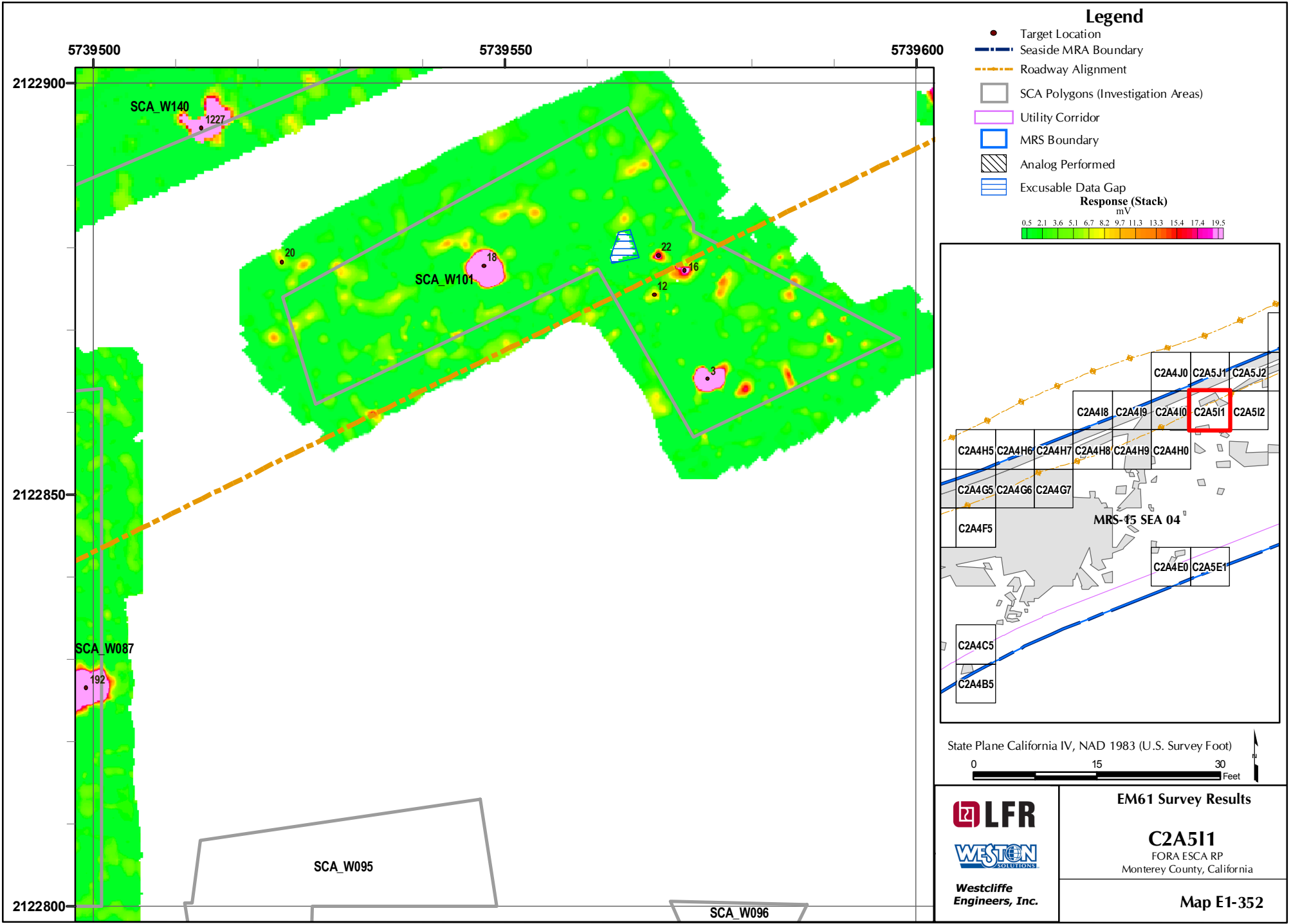
WESTON
SOLUTIONS

Westcliffe
Engineers, Inc.

EM61 Survey Results

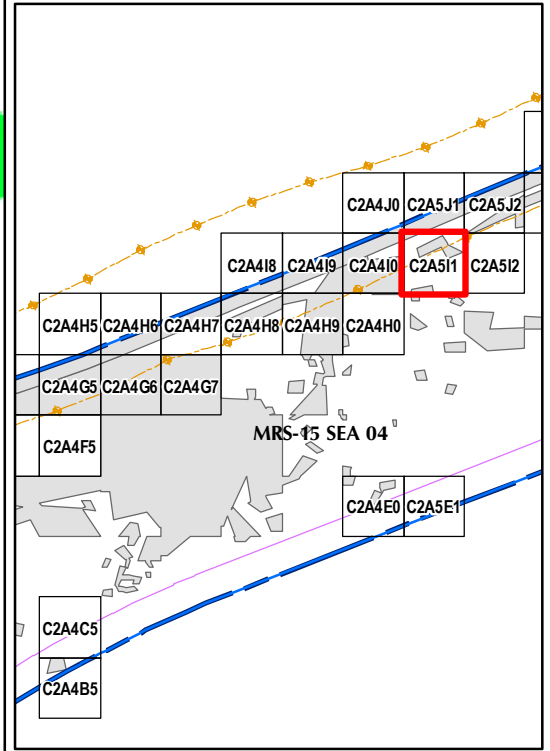
C2A5E1
FORA ESCA RP
Monterey County, California

Map E1-351



Legend

- Target Location
 - Seaside MRA Boundary
 - - - Roadway Alignment
 - SCA Polygons (Investigation Areas)
 - ▭ Utility Corridor
 - ▭ MRS Boundary
 - ▨ Analog Performed
 - ▭ Excusable Data Gap
- Response (Stack)**
mV
- 0.5 2.1 3.6 5.1 6.7 8.2 9.7 11.3 13.3 15.4 17.4 19.5



State Plane California IV, NAD 1983 (U.S. Survey Foot)

0 15 30 Feet

LFR

WESTON
SOLUTIONS

Westcliffe
Engineers, Inc.

EM61 Survey Results

C2A511
FORA ESCA RP
Monterey County, California

Map E1-352

