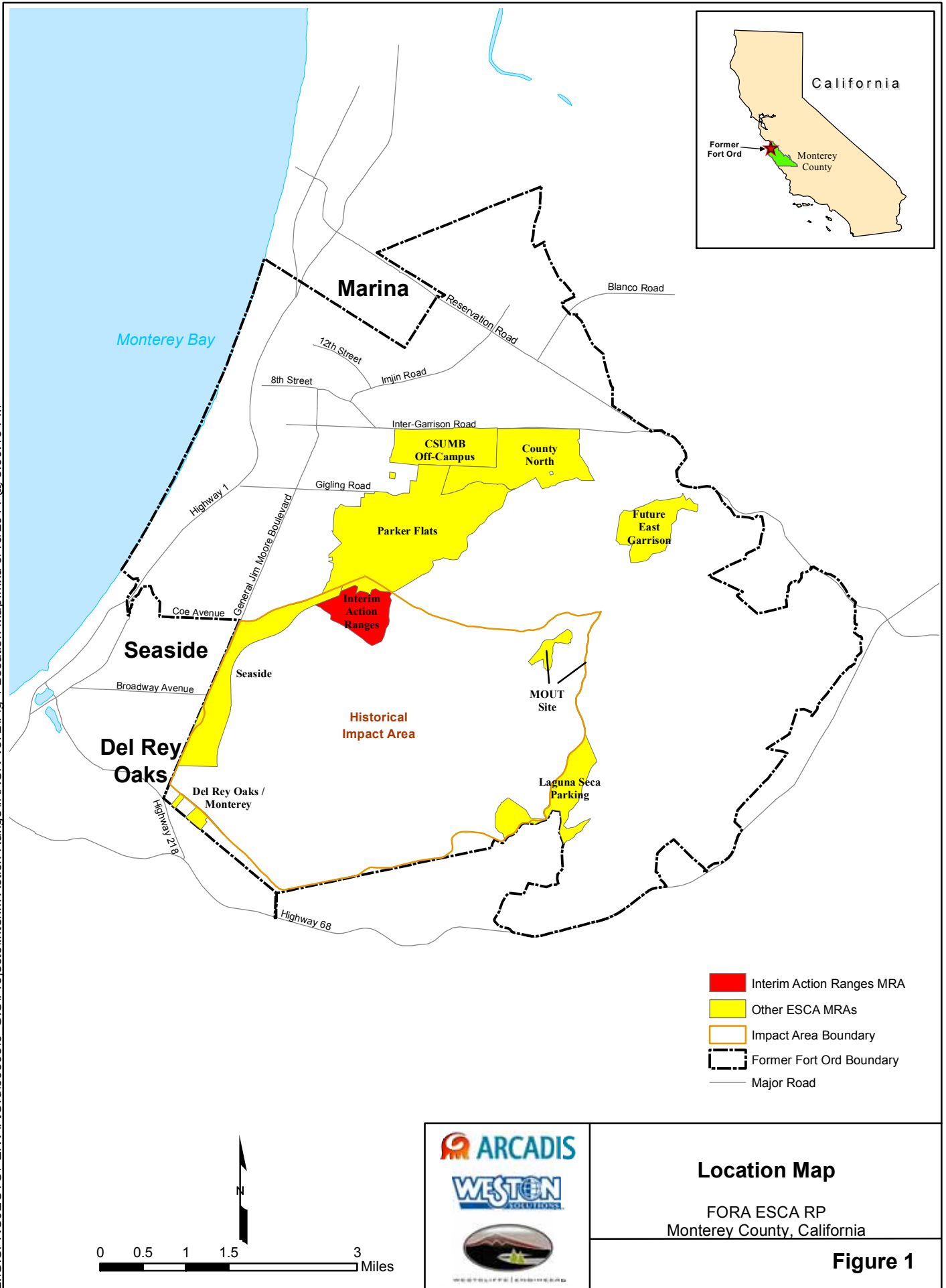
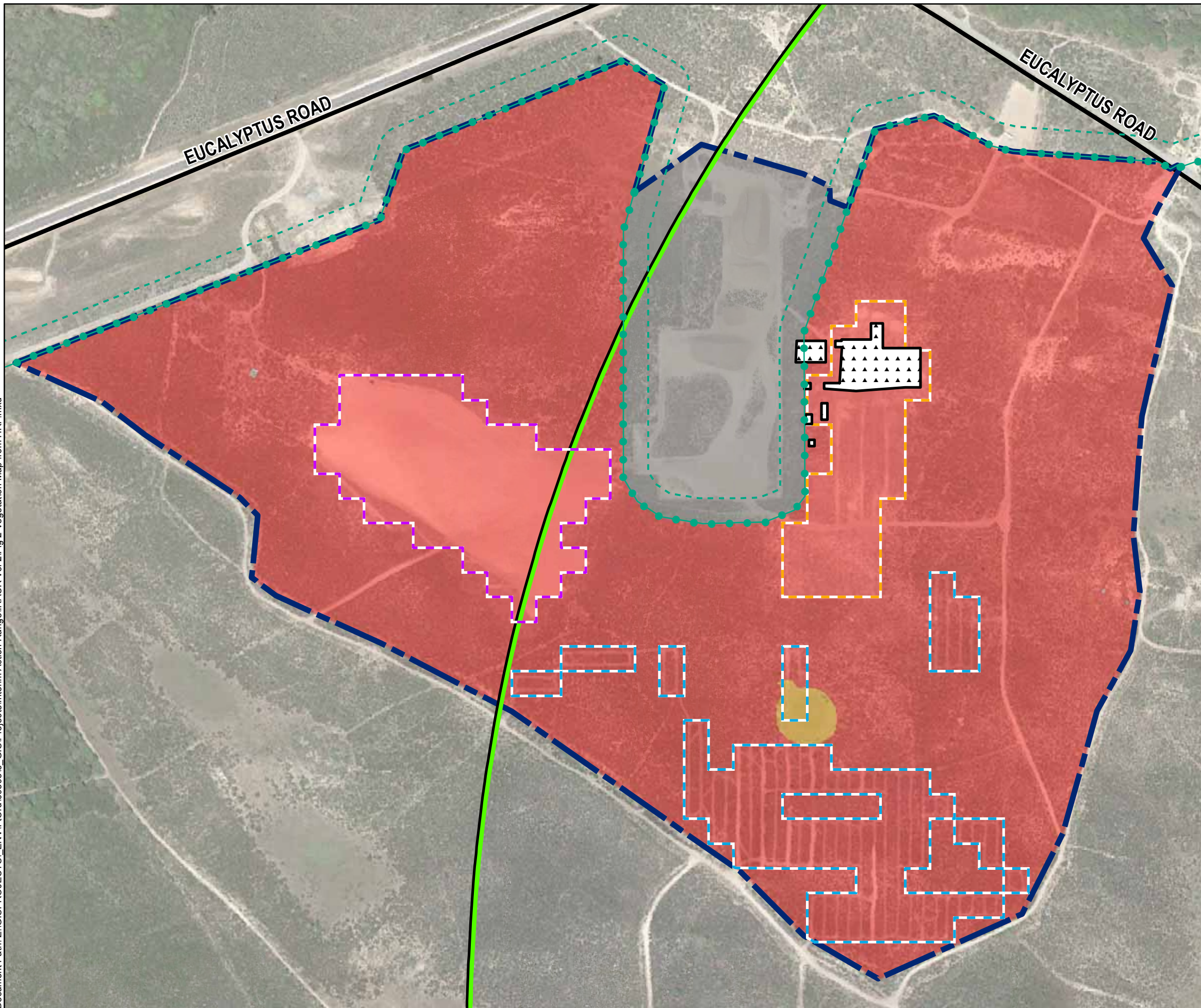


Z:\GISPROJECTS\ ENV\FtOrd\0959516_GIS\Projects\Interim Action Range\IRACR Vol 2\Fig 1 Location Map.mxd 9/10/2014 @ 8:00:16 PM



Document Path: Z:\GIS\PROJECTS\ENV\FORTD\0959516_GIS\Projects\Interim Action Range\IRACR_Vol 2\Fig 2 Vegetation Map from HRP.mxd



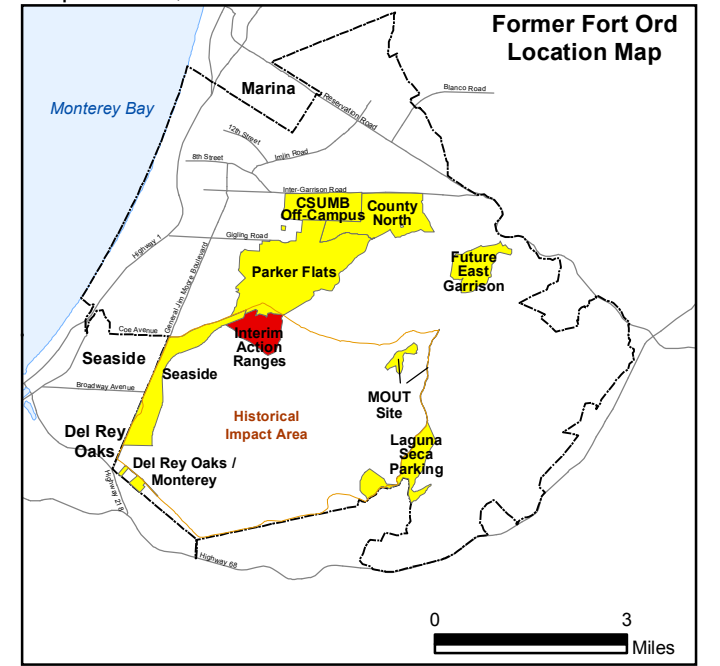
Legend

- Munitions Response Area
- Major Road
- Site 39 (HA44) US Army Action
- Development Parcel
- Grassland
- Central Maritime Chaparral
- Borderland Interface
- 100-Foot Buffer from Borderland Interface
- 2 km California Tiger Salamander Buffer

Phase II Areas

- North Range 44 SCA
- South Range 44 SCA/Central Area NCA
- Range 47 SCA

Source: Flora and Fauna Study of Fort Ord, California, Jones and Stokes Association Inc., December 1992. Grassland in IAR MRA designated by ESCA RP, Unpublished, 2010



Aerial Source: Google Earth Pro, Accessed 12/2/2013 - Image Date: 5/5/2012

0 400 800 Feet

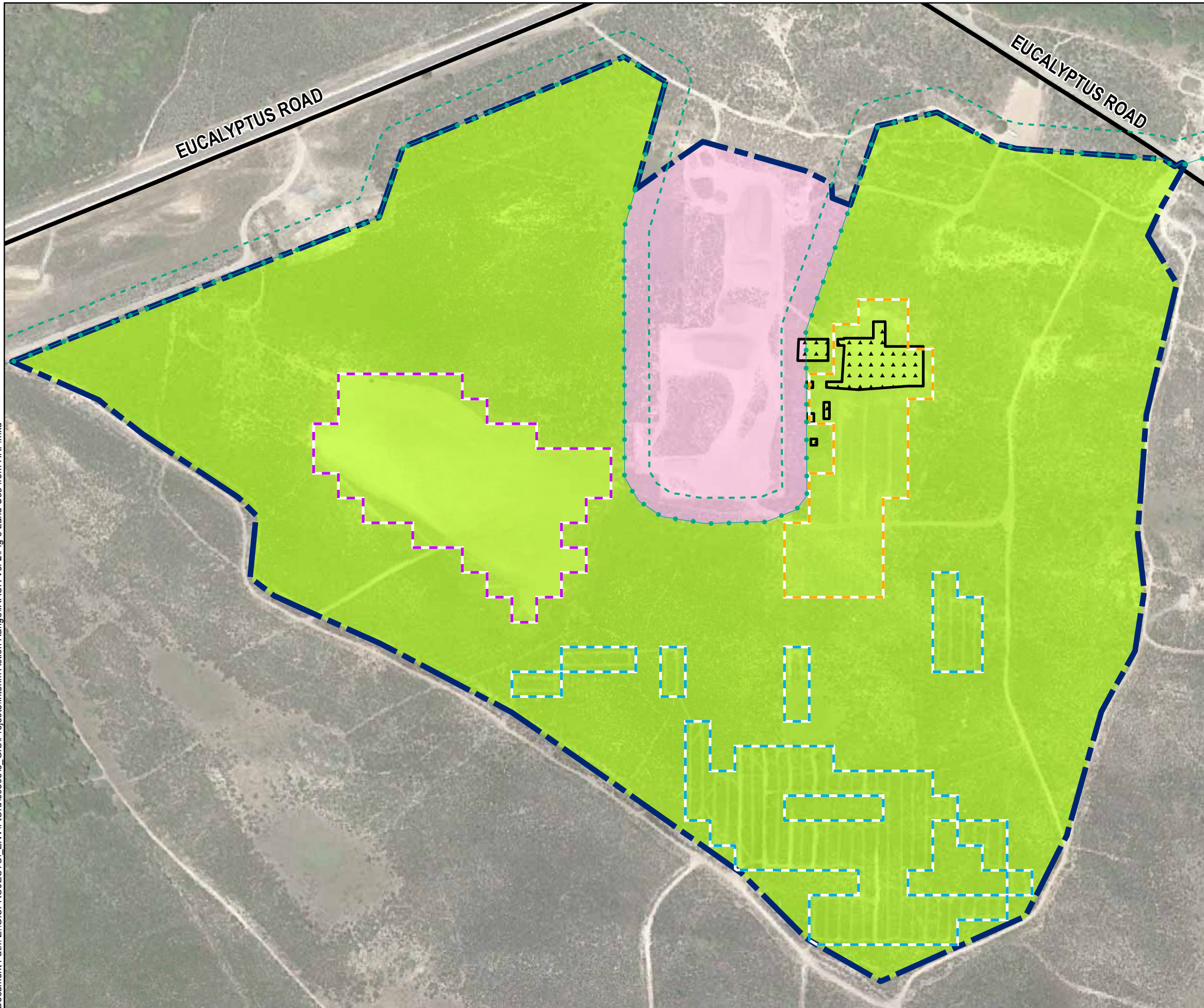


Vegetation Types

FORA ESCA RP
Monterey County, California

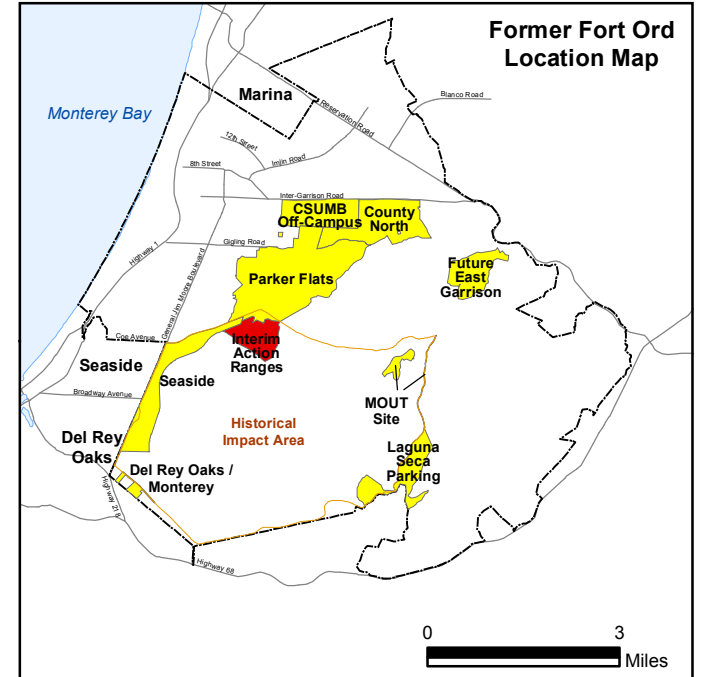
Figure 2

Document Path: Z:\GIS\PROJECTS\ENV\FORTD\0959516_GIS\Projects\Interim Action Range\IRACR_Vol 2\Fig 3 Land Use from HRP.mxd

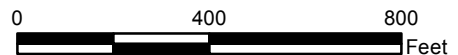


Legend

- Munitions Response Area
- Major Road
- Site 39 (HA44) US Army Action
- North Range 44 SCA
- South Range 44 SCA/Central Area NCAs
- Range 47 SCA
- Habitat Reserve
- Development Parcel
- Borderland Interface
- 100-Foot Buffer from Borderland Interface



Aerial Source: Google Earth Pro, Accessed 12/2/2013 - Image Date: 5/5/2012

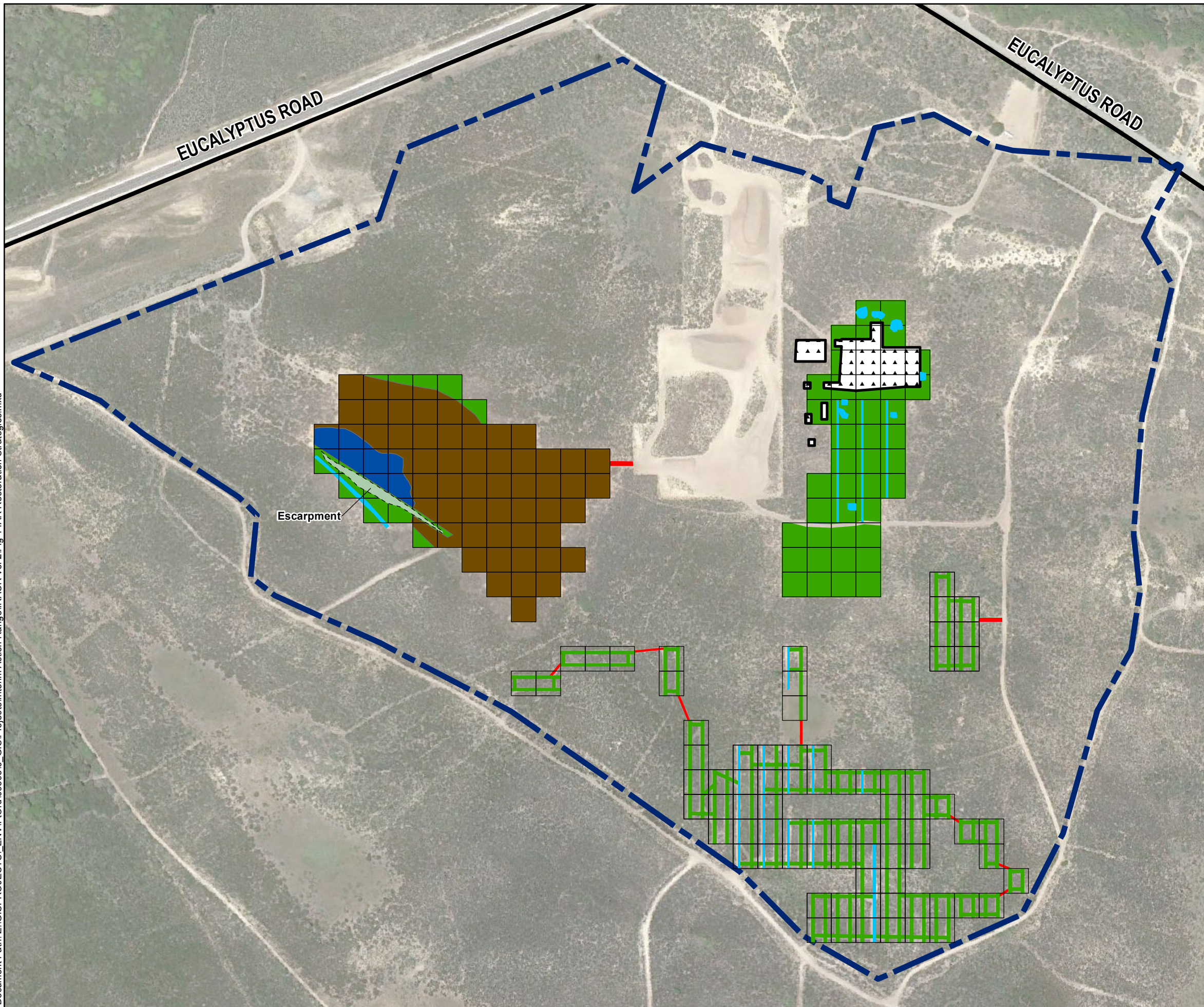


Proposed Future Land Use

FORA ESCA RP
Monterey County, California

Figure 3

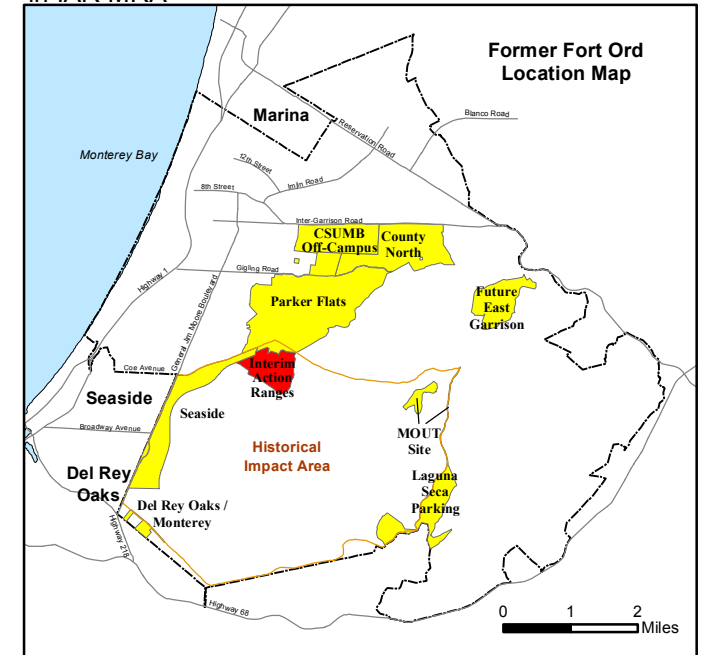
Document Path: Z:\GIS\PROJECTS\ENV\FIORd\0959516_GIS\Projects\Interim Action Range\IRACR_Vol 2\Fig 4_IAR Restoration Strategies.mxd



Legend

- Major Road
 - Munitions Response Area
 - Site 39 (HA44) US Army Action
- Monitoring Only**
- Monitoring of Improved Ingress/Egress Areas Established by ESCA RP Team
 - Monitoring of Vegetation Cutting and Target-specific Areas
 - Monitoring of Low-recruitment Escarpment Subject to Small-scale and Target-specific Excavation Area
- Passive Restoration**
- Seeding of Small-scale Excavation Areas
 - Topsoil Replacement, Erosion Control, and Seeding of Large-scale Soil Excavation Area
- Active Restoration**
- Topsoil Replacement, Erosion Control, Seeding and Container Planting of Large-scale Excavation Area

NOTE: Schematic representation of restoration activities in IAR MRA



Aerial Source: Google Earth Pro, Accessed 12/2/2013 - Image Date: 5/5/2012
0 400 800 Feet

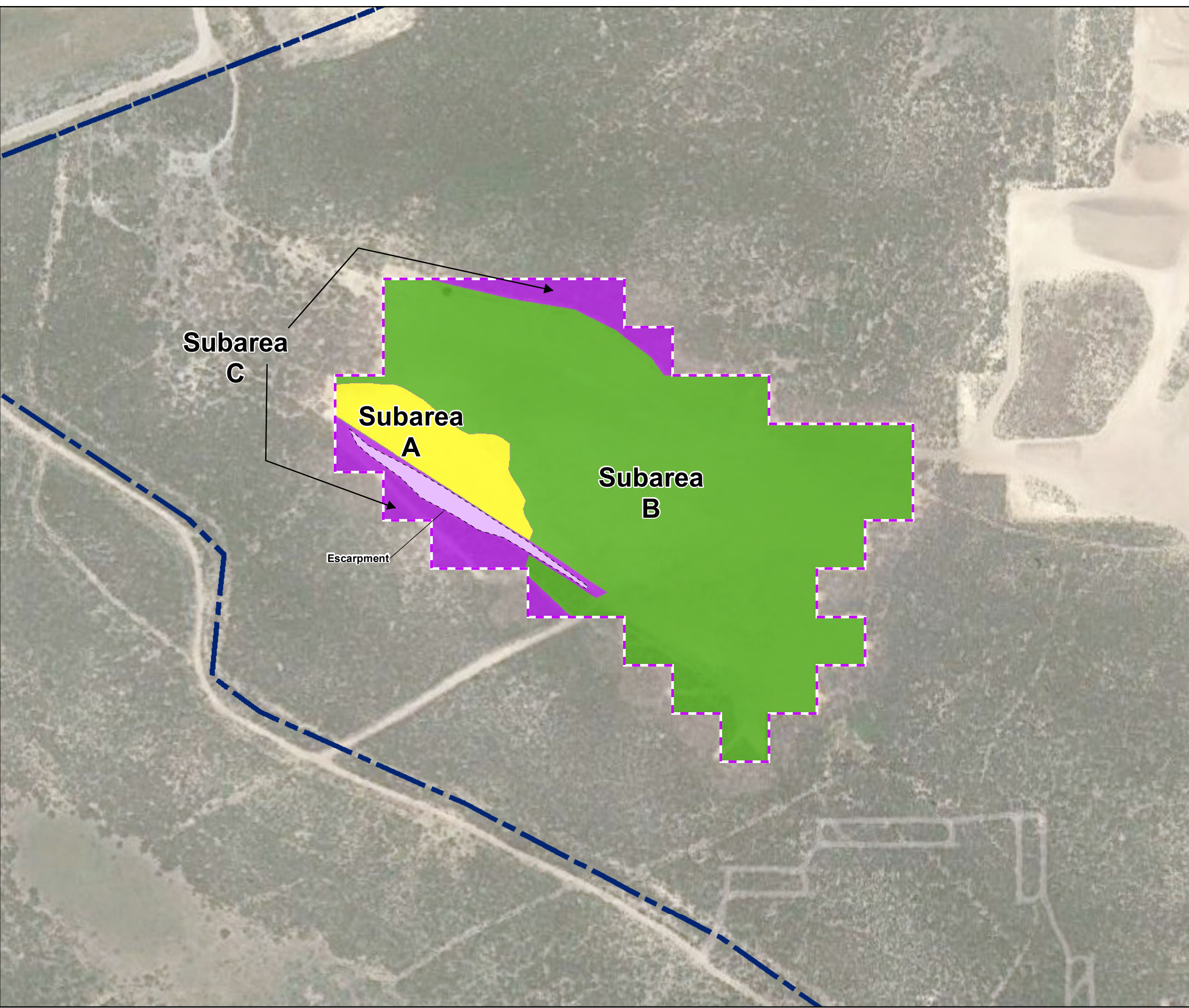


Restoration Activities







FORA ESCA RP
Monterey County, California

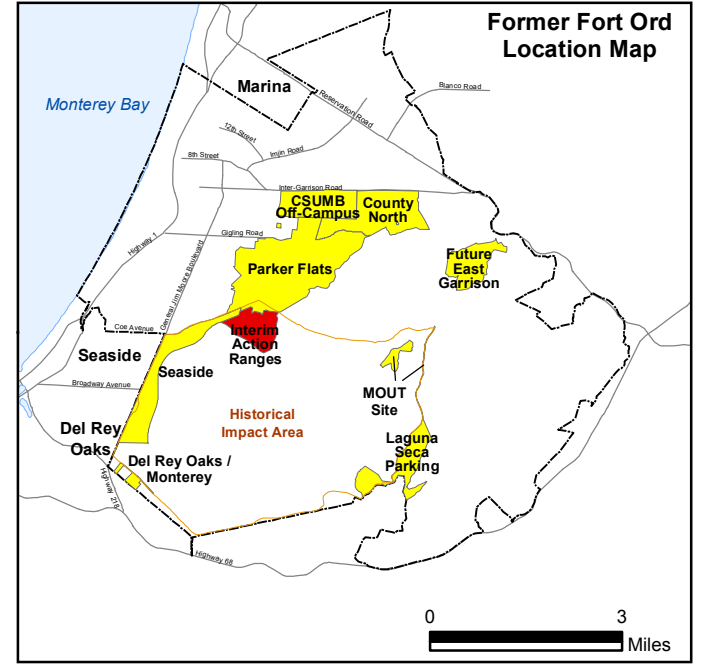
Figure 4

Document Path: Z:\GIS\PROJECTS\ ENV\FortOrd\0959516_GIS\Projects\Interim Action Range\IRACR Vol 2\Fig 5 IAR_R47_Detail_and_Subareas.mxd



Legend

-  Munitions Response Area
-  Range 47 SCA
-  Subarea A - Topsoil Replacement, Erosion Control, and Seeding of Large-scale Soil Excavation Area
-  Subarea B - Topsoil Replacement, Erosion Control, Seeding and Container Planting of Large-scale Soil Excavation Area
-  Subarea C - Vegetation Cutting and Target-specific Areas, Erosion Control and Seeding of Small-scale Excavation Areas
-  Subarea C - Erosion Control of Low-recruitment Escarpment Subject to Small-scale and Target-specific Excavation Areas



Aerial Source: Google Earth Pro,
 Accessed 12/2/2013 - Image Date: 5/5/2012

0 200 400 Feet

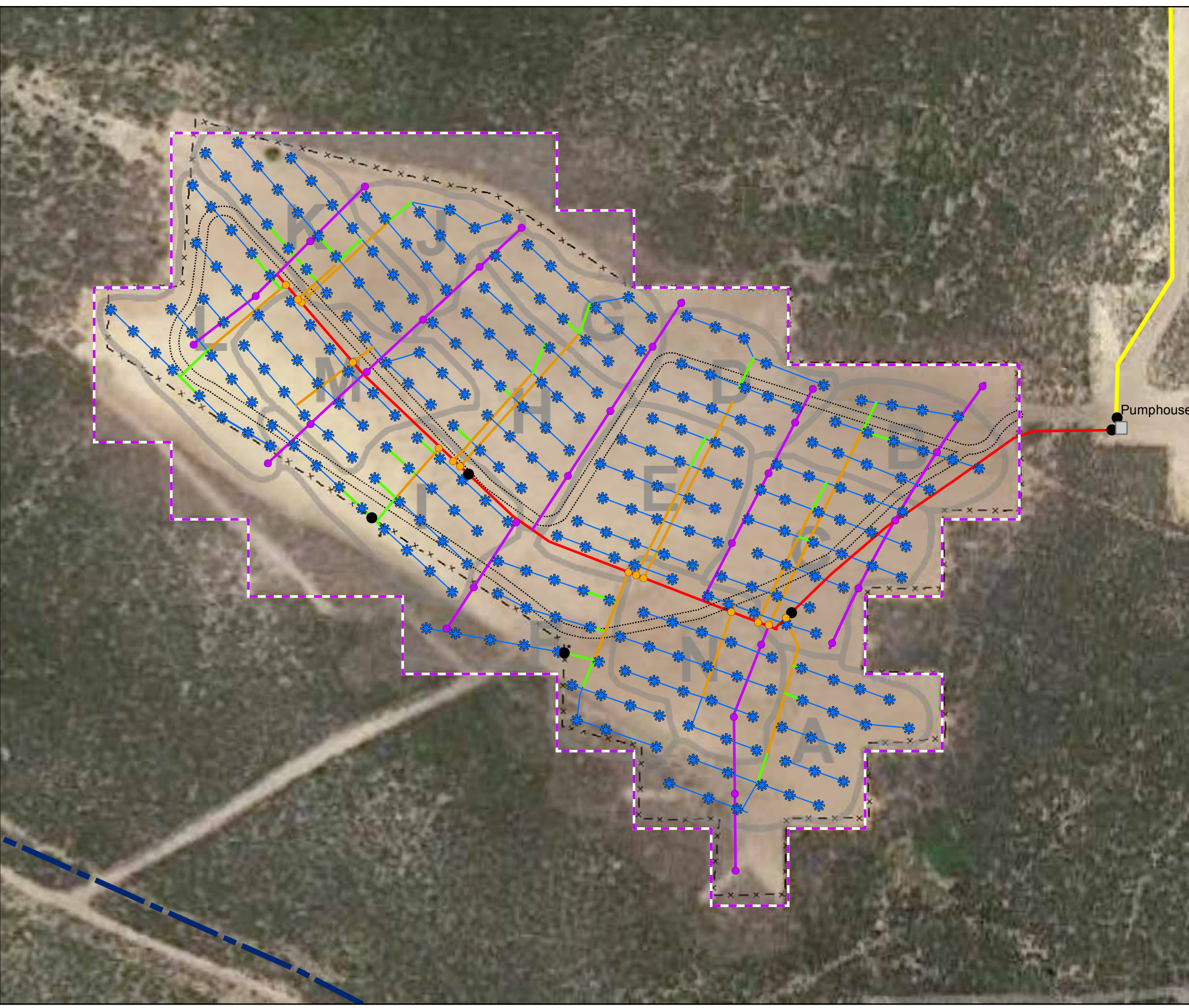


Range 47 SCA Subareas

FORA ESCA RP
 Monterey County, California

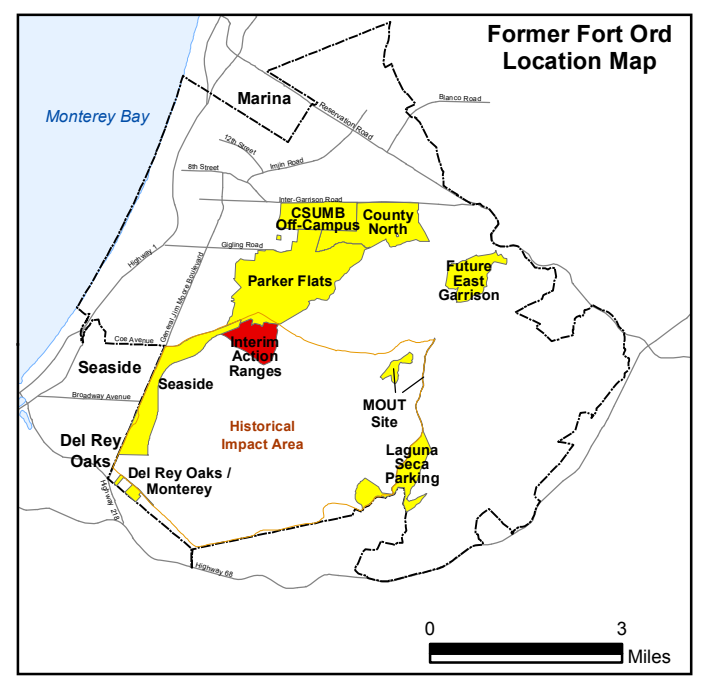
Figure 5

Document Path: Z:\GIS\PROJECTS\ ENV\FortOrd\0959516_GIS\Projects\Interim Action Range\IRACR Vol 2\Fig 6 R47 Irrigation System.mxd



Legend

- Munitions Response Area
- Range 47 SCA
- Sprinkler Head
- Shut-off Valve
- Hose Bib
- Irrigation Valve
- 1" HDPE Lateral
- 2" PVC Hose-bib Lines
- 2" PVC Lateral
- 4" PVC Subheader
- 4" PVC Header
- 4" HDPE Water Main
- Temporary Road, Planted After Construction
- Fence Alignment
- Irrigation Zones



Aerial Source: Google Earth Pro,
 Accessed 12/2/2013 - Image Date: 5/5/2012

0 125 250 Feet



Range 47 SCA Infrastructure




FORA ESCA RP
 Monterey County, California

Figure 6





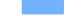



Document Path: Z:\GIS\PROJECTS\ ENV\FIORd\0959516_GIS\Projects\Interim Action Range\IRACR Vol 2\Fig 7 IAR R47 Seeding.mxd

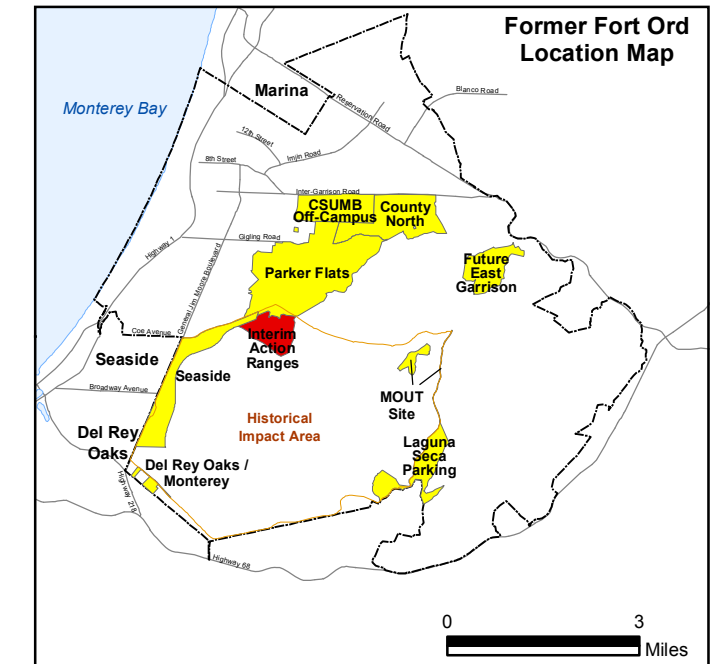


Legend

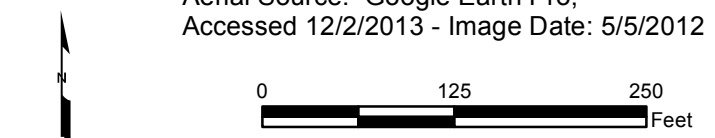
-  Munitions Response Area
-  Development Parcel Boundary
-  Range 47 SCA




Seeding Activities

-  Central Maritime Chaparral Seed Mix and Ceanothus Seed Mix and Range 47 SCA Soil Seedbank
-  Range 47 SCA Soil Seedbank
-  Central Maritime Chaparral Seed Mix and Ceanothus Seed Mix
-  Monterey spineflower seedbank
-  Monterey spineflower seed
-  Monterey gilia container plants
-  Monterey gilia seedbank
-  Monterey gilia seed

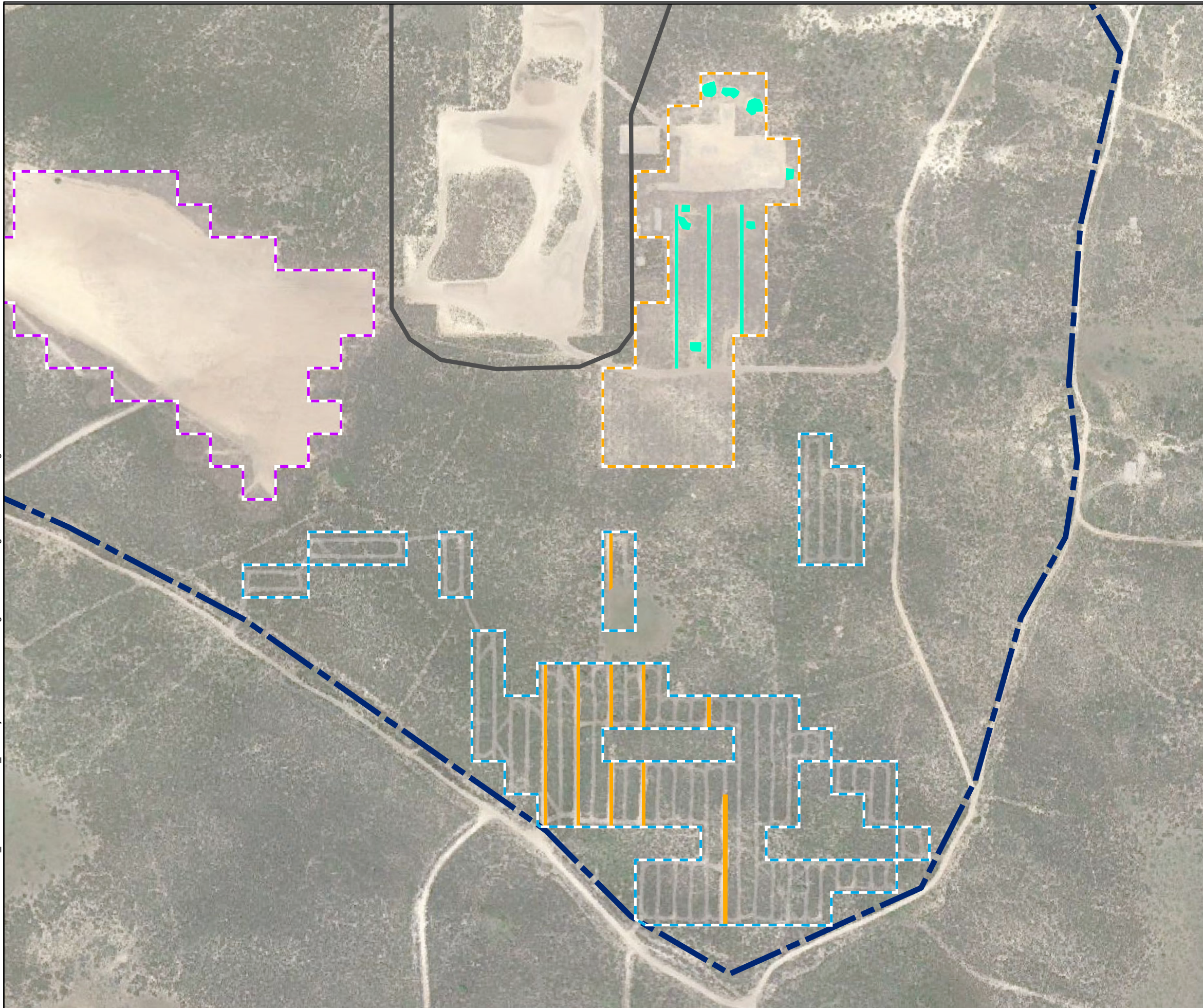


Aerial Source: Google Earth Pro, Accessed 12/2/2013 - Image Date: 5/5/2012



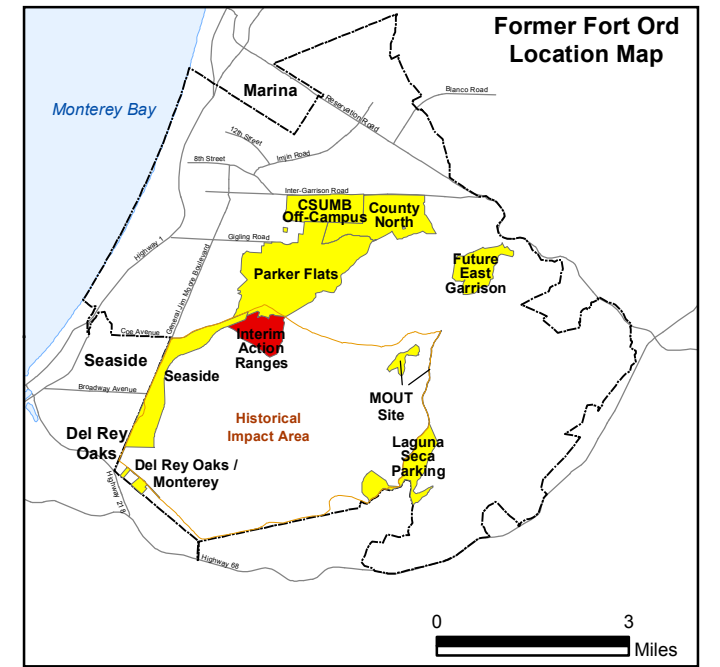
  	Range 47 SCA Seeding FORA ESCA RP Monterey County, California
	Figure 7

Document Path: Z:\GIS\PROJECTS\ENV\FIORD\0959516_GIS\Projects\Interim Action Range\IRACR Vol 2\Fig 8 IAR R44 Seeding.mxd



Legend

-  Munitions Response Area
-  Development Parcel Boundary
-  North Range 44 SCA
-  South Range 44 SCA/Central Area NCA
-  Range 47 SCA
-  Central Maritime Chaparral Seed Mix, with additional Monterey Gilia and Monterey Spineflower Seed
-  Same seed mix as above with further addition of Ceanothus Seed Mix and Seaside Bird's-beak Seed



Aerial Source: Google Earth Pro,
 Accessed 12/2/2013 - Image Date: 5/5/2012

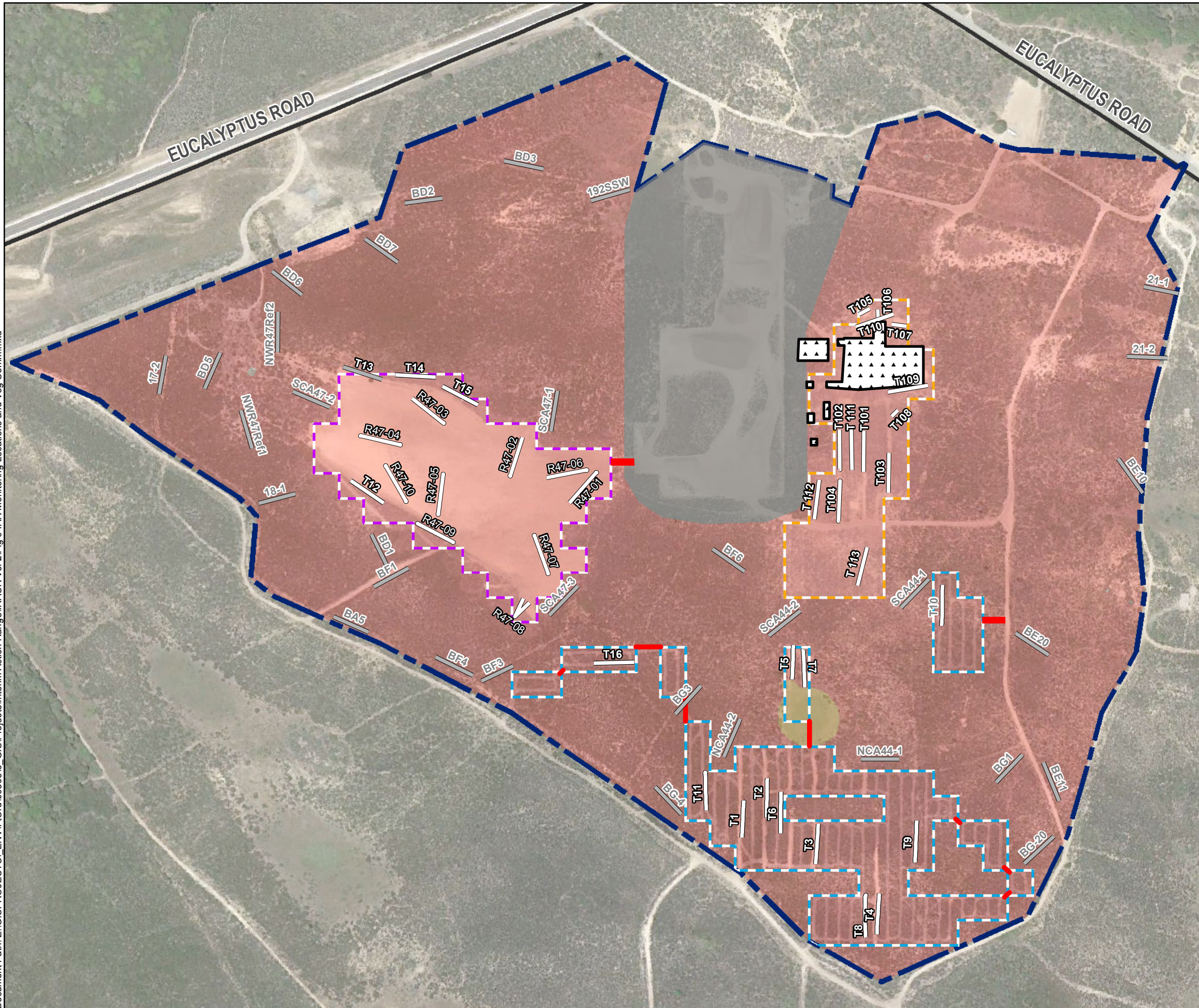
0 200 400 Feet



Range 44 SCA Seeding

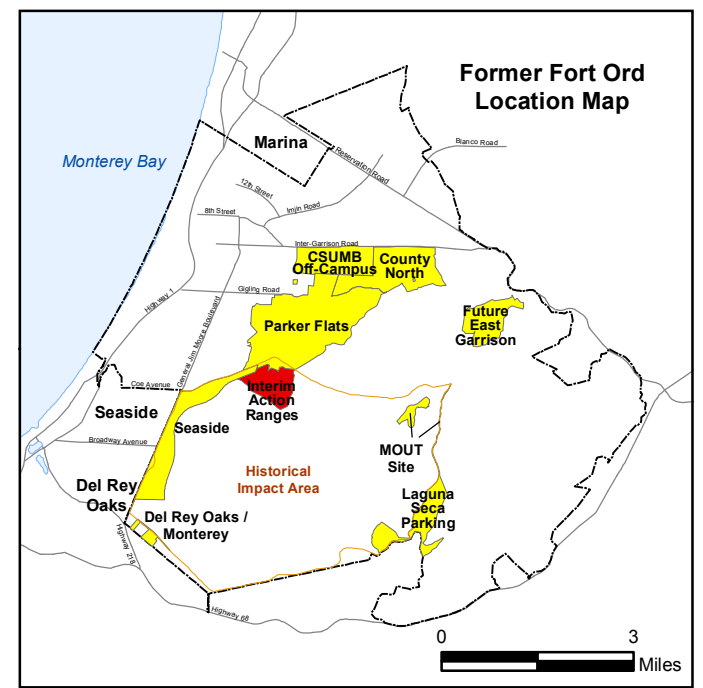
FORA ESCA RP
 Monterey County, California

Figure 8

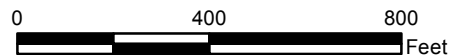


Legend

- Munitions Response Area
- Major Road
- Development Parcel
- Improved Ingress/Egress Established by ESCA RP Team
- Site 39 (HA44) US Army Action
- North Range 44 SCA
- South Range 44 SCA/Central Area NCA
- Range 47 SCA
- 23 2013 Vegetation Transects
- 24 Additional Ongoing Transect Monitoring Locations
- Grassland
- Central Maritime Chaparral



Aerial Source: Google Earth Pro, Accessed 12/2/2013 - Image Date: 5/5/2012



Vegetation Monitoring Locations

FORA ESCA RP
Monterey County, California

Figure 9

Figure 10
Number of Surviving and Recruited Plants for 16 Species in Interim Action Ranges MRA Range 47 SCA Subarea B

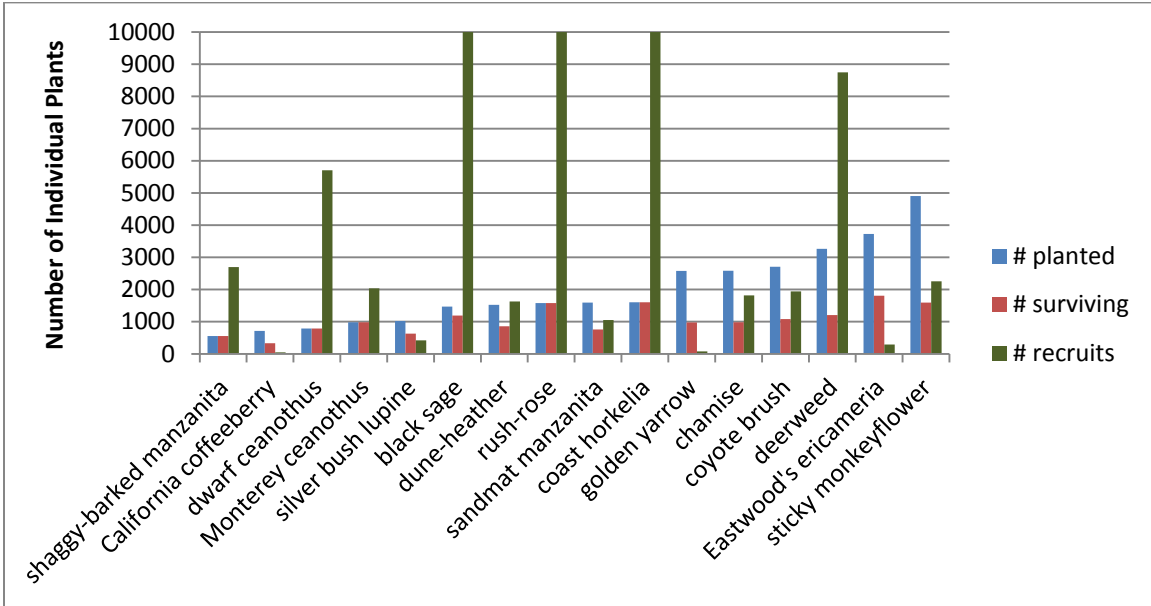


Figure 11
Percent Recruitment by Species in Interim Action Ranges MRA Range 47 SCA Subarea B

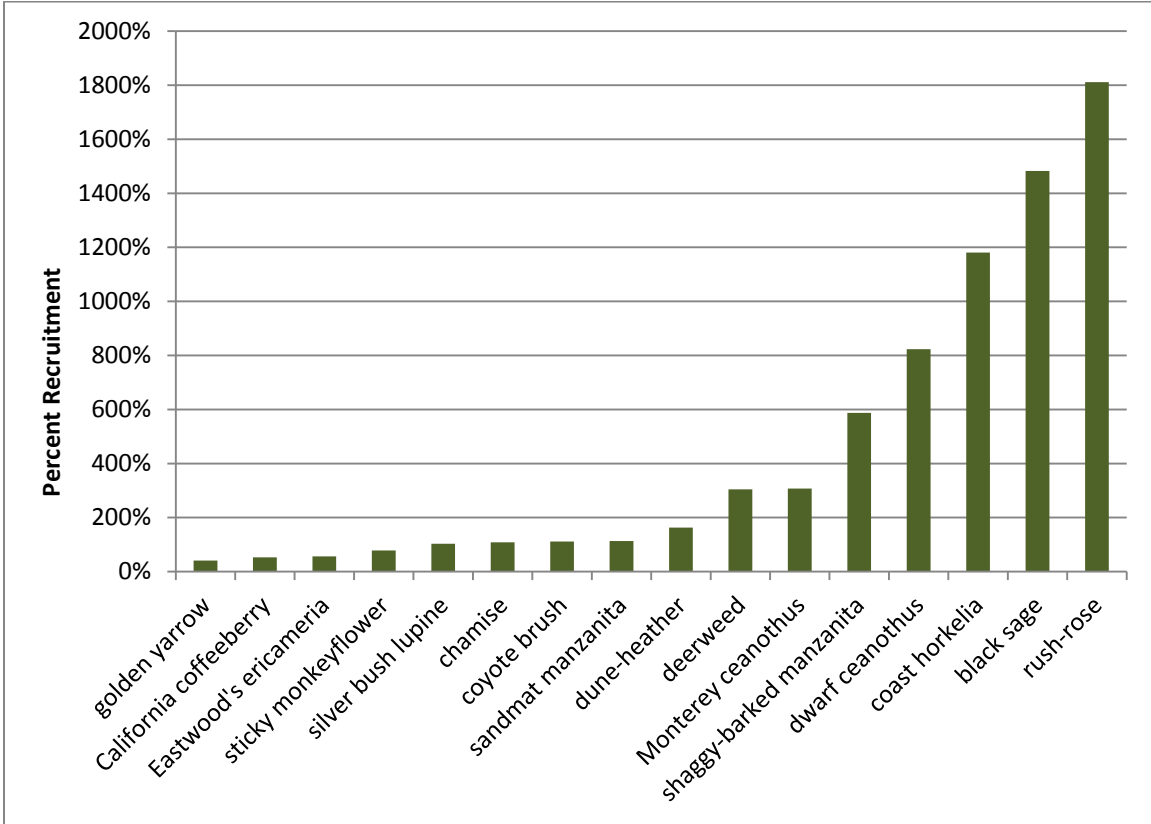


Figure 12
Percent Survival of Salvaged Shaggy-barked Manzanitas in Interim Action Ranges MRA Range 47 SCA Subarea B

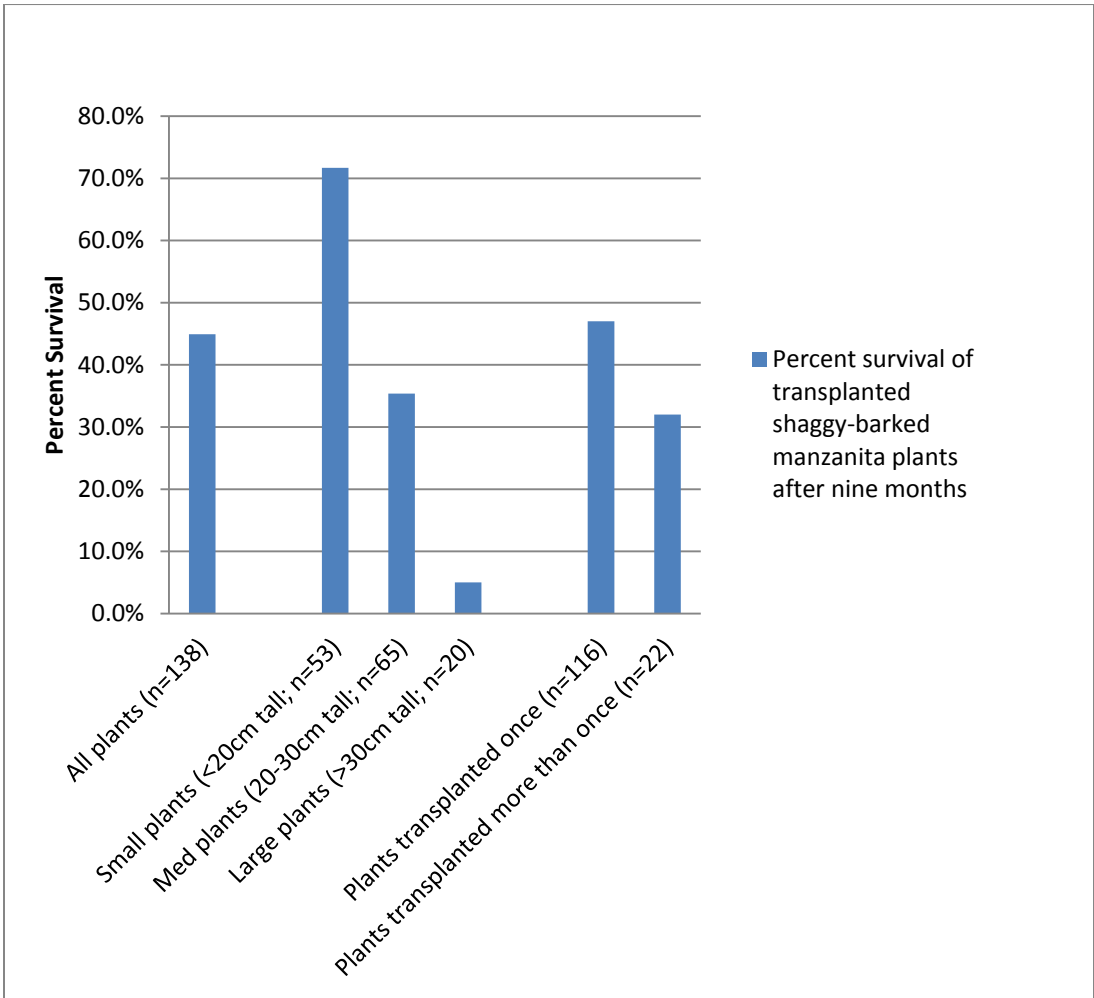


Figure 13
Vegetation Cover before and after Vegetation-cutting in 2011 in the IAR MRA (Average of All Locations)

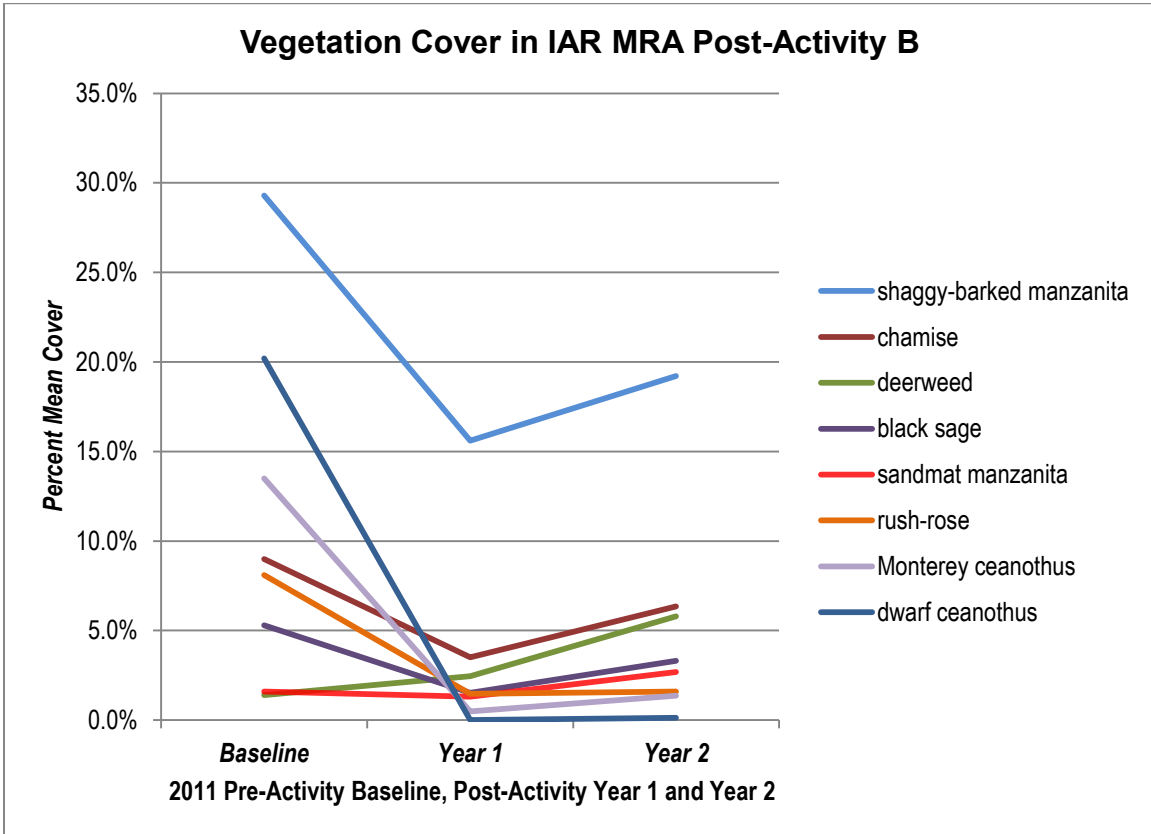


Figure 14
Vegetation Cover before and after small-scale excavations in 2011 in the IAR MRA (Average of All Locations)

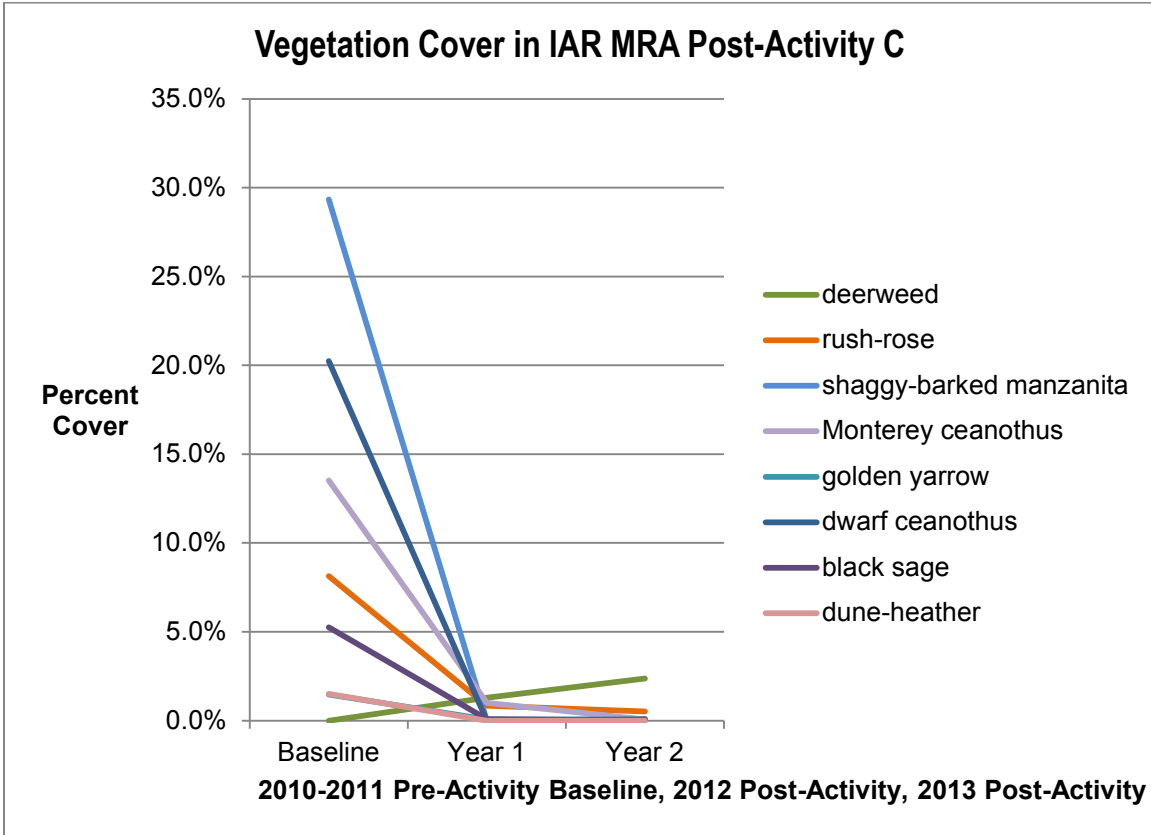


Figure 15
Principal components analysis plotting relative cover of plant species in vegetation transects based on similarity

Code	Scientific Name	Common Name
ACGL	<i>Acmispon glaber</i>	deerweed
ADFA	<i>Adenostoma fasciculatum</i>	chamise
ARPU	<i>Arctostaphylos pumila</i>	sandmat manzanita
ARTO	<i>Arctostaphylos tomentosa</i> subsp. <i>tomentosa</i>	shaggy-barked manzanita
CEDE	<i>Ceanothus dentatus</i>	dwarf ceanothus
CERI	<i>Ceanothus rigidus</i>	Monterey ceanothus
ERCO	<i>Eriophyllum confertiflorum</i>	golden yarrow
ERER	<i>Ericameria ericoides</i>	dune-heather
ERFA	<i>Ericameria fasciculata</i>	Eastwood's ericameria
FRCA	<i>Frangula californica</i>	California coffeeberry
GAEL	<i>Garrya elliptica</i>	coast silk-tassel
HESC	<i>Helianthemum scoparium</i>	rush-rose
LECA	<i>Lepechinia calycina</i>	pitcher sage
LUCH	<i>Lupinus chamissonis</i>	silver bush lupine
MIAU	<i>Mimulus aurantiacus</i>	sticky monkeyflower
QUAG	<i>Quercus agrifolia</i>	coast live oak
SAME	<i>Salvia mellifera</i>	black sage
SYMO	<i>Symphoricarpos mollis</i>	creeping snowberry