

MR Status
Fort Ord MR BCT
7 March 2018

BLM AREA B

Security measures and Outreach

- Notice and warning signs, trail closure fences, and boundary fences are in place around the current work areas in units B, C, B-3W, B-3E, and B-2A.
- The website and kiosks are being maintained with trail closure information.

Vegetation Removal

- All mechanical mastication and manual cutting/tree limbing of burned and cut units in BLM Area B is complete with the exception of Trail 62 buffer.

Surface removal

- Surface MEC removal in Unit B-2A is complete for 61 acres. Eleven additional acres are comprised of the Trail 62 buffer and these will be addressed at a later date.
- Surface MEC removal continues in Units B, B-3E and B-3W.

Digital Geophysical Mapping (DGM)

- DGM in Unit B-2A is in progress.
- DGM accessibility issues related to heavy tree density in Unit B-3E near Trail 56 and East Machine Gun Flats are being evaluated.

Subsurface MEC Removal and Restoration Activities

- Planning for subsurface MEC removal in B-3E (east of Addington Road) is underway.

IMPACT AREA

FIELD ACTIVITIES

Broadway Bypass AC MEC Remediation

- Phase 2 target digs and additional QA digs are complete.
- QC and QA results are pending.

Munitions with Sensitive Fuzes Field Study

- Site preparation work in five test grids in Unit 23 was completed on 2/7.
- Metal Mapper 2x2 (MM 2x2) dynamic survey work started on 2/12 and was completed on 2/22. Data processing and target selection is complete and approximately 1,800 targets have been identified.
- Cued MM 2x2 survey began on 2/26.

Restoration Activities

- Impact Area restoration projects and erosion control activities continue.

Target/Debris Disposal

- One detonation operation occurred on 2/8 with 69 MPPEH items destroyed.
- MD scrap sorting remains on hold until sufficient scrap accumulates.

OTHER ACTIVITIES

Vernal Pool Anomaly Investigation

- A finalized list of targets for subsurface removal in vernal ponds has been developed. The final target list for reacquisition is in progress.
- The Metal Mapper 2x2 will be used to better identify subsurface targets and target depths. An approach to perform target excavation while minimizing impacts to the ponds will be developed.

Unit 23 Risk Reduction

- Target picks for potential near-surface large ordnance item removal in Unit 23 is complete (1,217).
- Unit 23 Risk Reduction field activities are expected to begin in March-April timeframe following completion of the Munitions with Sensitive Fuzes Field Study.

Units 13, 17, 20 Investigation

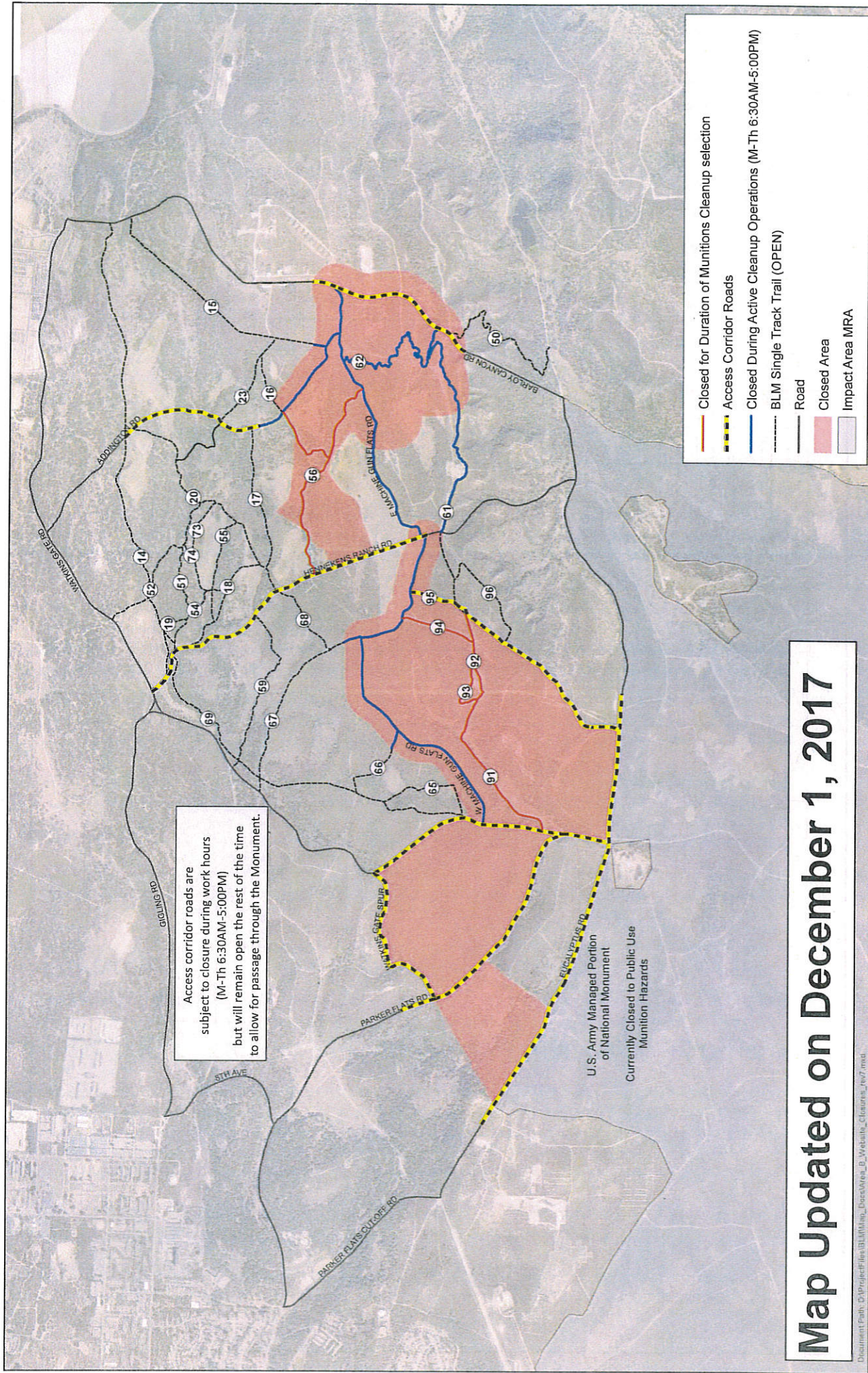
- Manual vegetation cutting on 55,000 linear feet (LF) of initial transects and 17,000 LF of intermediate transects in Unit 17 was completed before HMP biological constraints prevented additional work (as of 2/1).
- Approximately 56,000 LF of transect were inspected by the surface MEC investigation team as of 2/1.
- Current data is under evaluation.

Impact Area Fuel Break Markers

- The Impact Area 100-Foot Buffer markers will be installed in late spring.

MMRP SITE SECURITY PROGRAM

- Trespass Incident Reports
 - Last 30 days (ending 3/2/2018): 0
 - Year to Date: 1
- MEC Incident Reports
 - Last 30 days (ending 3/2/2018): 0
 - Year to Date: 1
- Community Education – Year to Date: 25
- MEC Recognition and Safety Training – Year to Date: 78

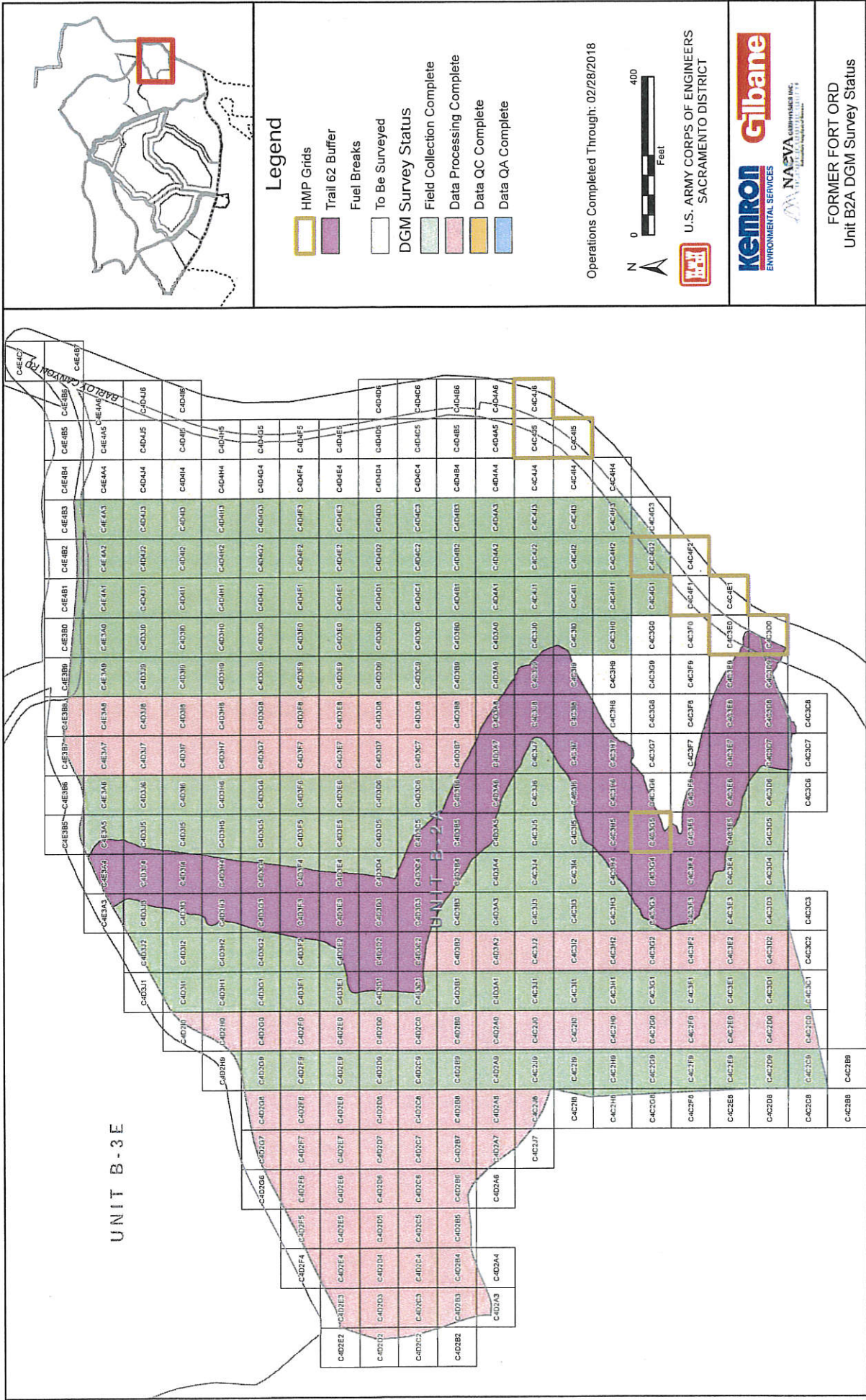


Access corridor roads are subject to closure during work hours (M-Th 6:30AM-5:00PM) but will remain open the rest of the time to allow for passage through the Monument.

U.S. Army Managed Portion of National Monument
Currently Closed to Public Use
Munition Hazards

Map Updated on December 1, 2017

Document Path: C:\ProjectFiles\GIS\Maping_Docs\Area_B_Website_Closures_1207.mxd



Legend

- HMP Grids
- Trail 62 Buffer
- Fuel Breaks
- To Be Surveyed
- DGM Survey Status
- Field Collection Complete
- Data Processing Complete
- Data QC Complete
- Data QA Complete

Operations Completed Through: 02/28/2018

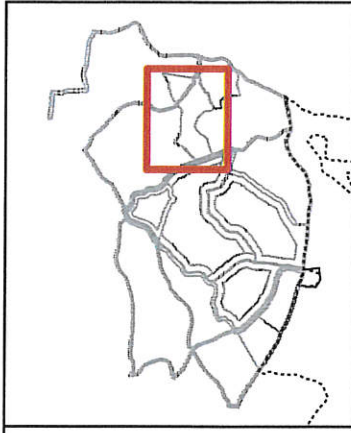
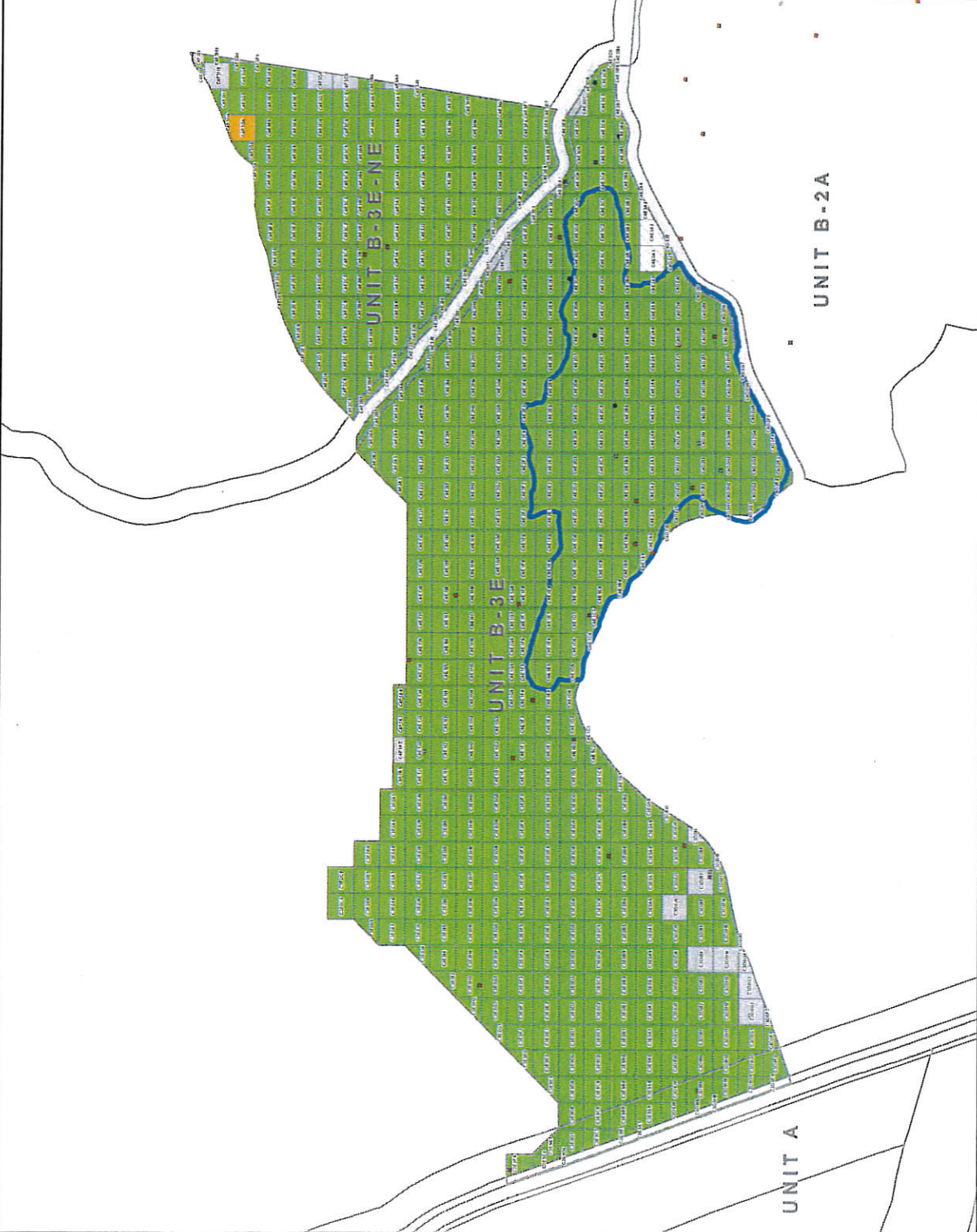
0 400 Feet

Kemtron ENVIRONMENTAL SERVICES

Gilbane NAECVA CONSULTING INC. THE NATIONAL ASSOCIATION OF ENVIRONMENTAL CONSULTANTS

U.S. ARMY CORPS OF ENGINEERS
SACRAMENTO DISTRICT

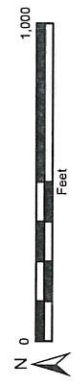
FORMER FORT ORD
Unit B2A DGM Survey Status



Legend

- MD, LIP
- Expended (Destroyed)
- Live (Destroyed)
- Live (LIP, Destroyed)
- DMM (CP, Destroyed)
- DMM (LIP, Destroyed)
- MPPEH (CP)
- MPPEH (LIP)
- UXO (LIP, Destroyed)
- Burn_Unit_Outline
- Fuel Breaks
- No MD
- < 75 Lbs MD
- 75-250 Lbs MD
- 250-500 Lbs MD
- 500-1000 Lbs MD
- > 1000 Lbs MD
- Dense Tree Boundary
- Surface Removal Planned

Operations Completed Through: 02/28/2018



U.S. ARMY CORPS OF ENGINEERS
SACRAMENTO DISTRICT



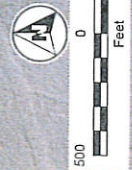
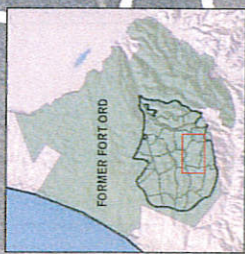
FORMER FORT ORD
Unit B-3E and B-3E-NE MD Density



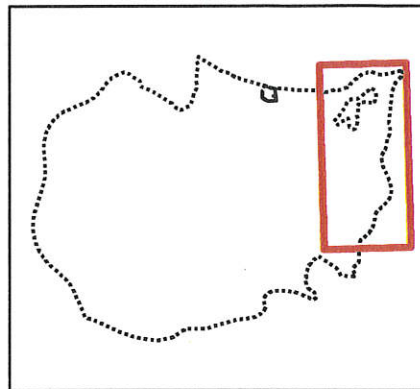
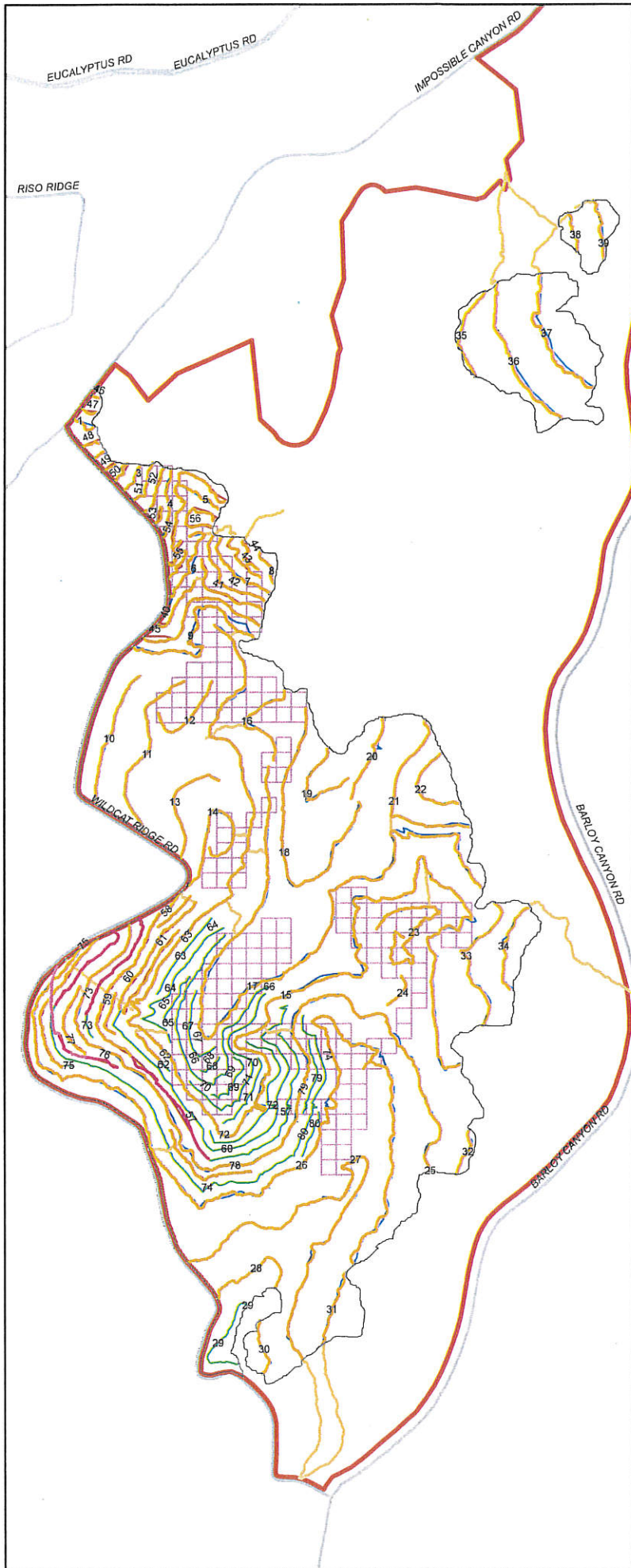
- Legend**
- Inner Zone Investigation Targets (17 targets)
 - Outer Zone Investigation Targets (1,200 targets)
 - Inner Zone (>436 feet from Fuel Break)
 - Outer Zone (<436 feet from Fuel Break)

UNIT 23 RISK REDUCTION
FORMER FORT ORD, CALIFORNIA

Figure 1
MetalMapper Investigation Locations



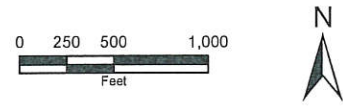
G:\PROJECTS\2017\03\2017_10_23_A41_Ag-PS-010_Gilbane



Legend

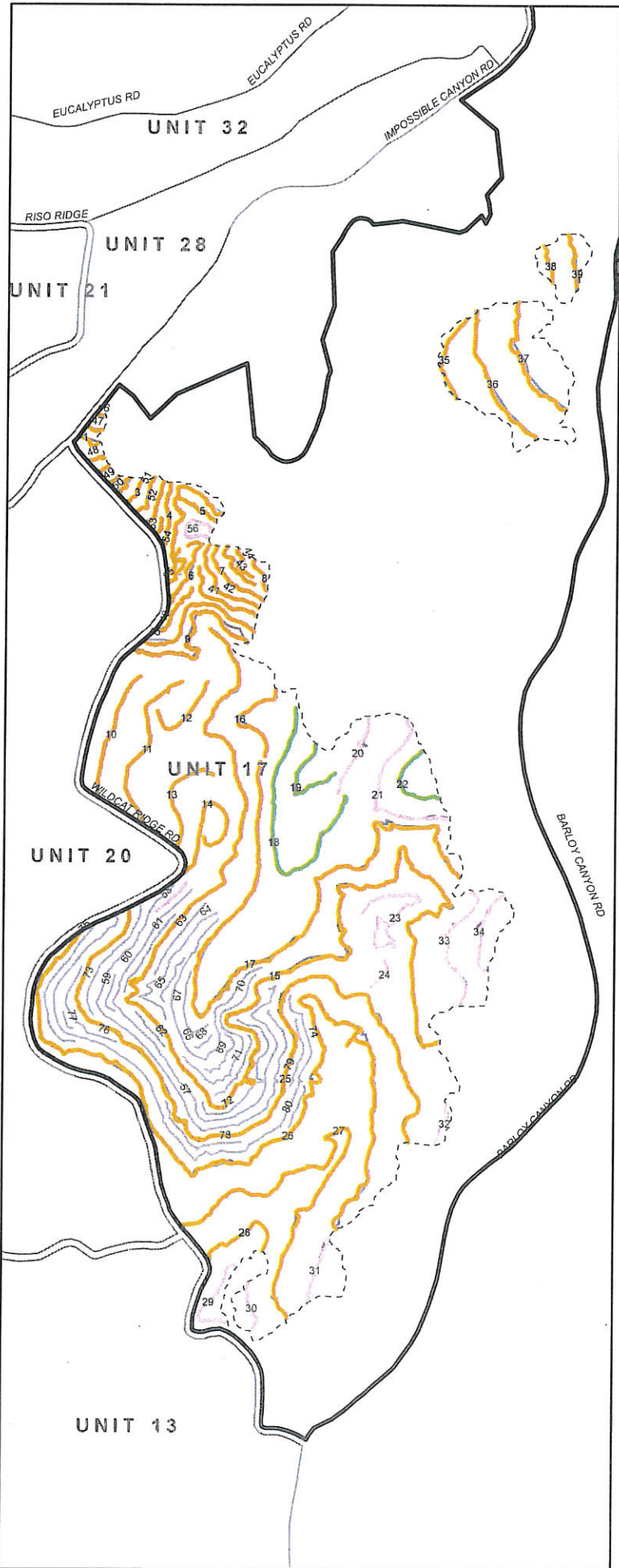
- HMP Grids
- Transect Vegetation Removal - 02/01/18
- Access rte Vegetation Removal - 02/01/18
- Transect Vegetation Summary**
- Transect Vegetation Removal Complete
- Access Rte Vegetation Removal Complete
- Initial Phase II Transects
- Secondary Phase II Transects
- Uncut Transects Due to HMP Restrictions
- Unit Boundary
- Roads

Linear Ft	Transects	Access Routes	Grand Total
2/28/2018	0.00	0.00	0.00
Total	72232.59	9367.97	81600.56






U.S. ARMY CORPS OF ENGINEERS
 SACRAMENTO DISTRICT
 FORT ORD
 Unit 17 Phase II Transects Vegetation Removal
 Operations Completed Through: 02/28/2018



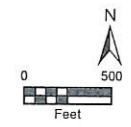
U.S. ARMY CORPS OF ENGINEERS
SACRAMENTO DISTRICT



Legend

- Phase II Eval Area
- Fuel Breaks
- To Be Surveyed
- Surface Field Complete
- Surface QC Complete
- Surface QA Complete
- Initial Phase II Transects
- Secondary Phase II Transects

Operations Completed Through: 02/28/2018



FORMER FORT ORD
Unit 17 Surface MEC Investigation Status